

INDULGE IN THE  
EXTRAVAGANCE OF  
SPACE AND STYLE.

  
RIVALI  
PARK  
HUMAN. NATURE.





# Exclusive 1, 2 & 3 BHK Apartments Lavishly proportioned Duplex and Penthouses @ boRivali

Rivali Park spread over 22 acres is a harmonious co-existence of nature and a master planned mixed-use sustainable project with designer landscapes delivering the ultimate luxury lifestyle on a platter.

Its sense of serenity is simply enhanced by the magnificent 25,000 acres green expanse of the Sanjay Gandhi National Park located directly across it.

Gensler USA, a leading green design firm in the world\* and EHDD has conceptualized Rivali Park as a symphony of pleasures that delight the senses and soothe the soul.

Rivali Park has IGBC Platinum Certification for WHITESPRING and IGBC Gold Pre-Certification for WINTERGREEN  
Splendid and magnificent in every way Rivali Park sets new standards in well defined lifestyles.

\* as per 2014 ranking



Actual Show Flat Image



MahaRERA Registration No: WHITESPRING P51800002287  
WINTERGREEN P51800003067

[www.maharera.mahaonline.gov.in](http://www.maharera.mahaonline.gov.in)





Actual Show Flat Image

Designed especially for connoisseurs of all that is superlative and exceptional these lavish residences are designed to pamper your senses, celebrate your passions and provide you with the perfect setting to cherish time & space with your loved ones.

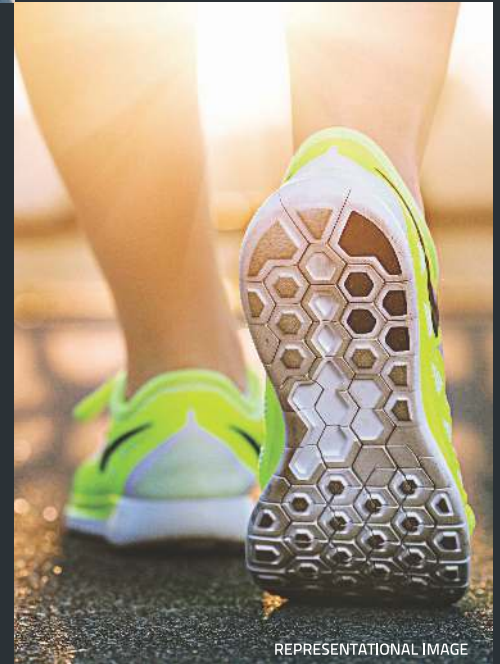


Actual Show Flat Image





Rivali Park has been thoughtfully designed to provide you with every luxury and let you revel in a lifestyle of grandeur and indulgence that creates a lifetime of memorable experiences.



The exclusive club house brings you the best of recreation and relaxation:

- Swimming Pool and Gymnasium
- Jacuzzi
- Squash Court and Tennis Court
- Indoor Games Room
- Walking and Jogging Track
- Landscaped Gardens
- Mini-theatre
- Children's Play Area
- Library
- Yoga Room
- Multi-purpose Court
- Multi-purpose Party Room and Lawn







**LEGENDS:**

- |                               |                        |                          |
|-------------------------------|------------------------|--------------------------|
| 1. CENTRAL LAWNS              | 7. MULTI-PURPOSE COURT | 13. JOGGING TRACK        |
| 2. FLOWER BEDS                | 8. BOX CRICKET         | 14. THERAPY WALKS        |
| 3. TEE GROVE                  | 9. TENNIS COURT        | 15. SEATING AREA         |
| 4. GREEN FIELDS               | 10. KIDS PLAY AREA     | 16. DRY LANDSCAPE COURTS |
| 5. VEHICLE DROP-OFF           | 11. AMPHITHEATRE       |                          |
| 6. SWIMMING POOL WITH JACUZZI | 12. PRIVATE GARDEN     |                          |



FLAT	TYPE	CARPET AREA		BALCONY AREA		TOTAL	
		SQ.MT.	SQ.FT.	SQ.MT.	SQ.FT.	SQ.MT.	SQ.FT.
A	4 BHK	173.00	1862.17	12.53	134.87	185.53	1997
B	3 BHK	98.28	1057.89	11.35	122.17	109.63	1180
C	3 BHK	98.28	1057.89	11.35	122.17	109.63	1180
D	4 BHK	175.14	1885.21	12.53	134.87	187.67	2020



## WINTERGREEN - WING A 42ND FLOOR PLAN



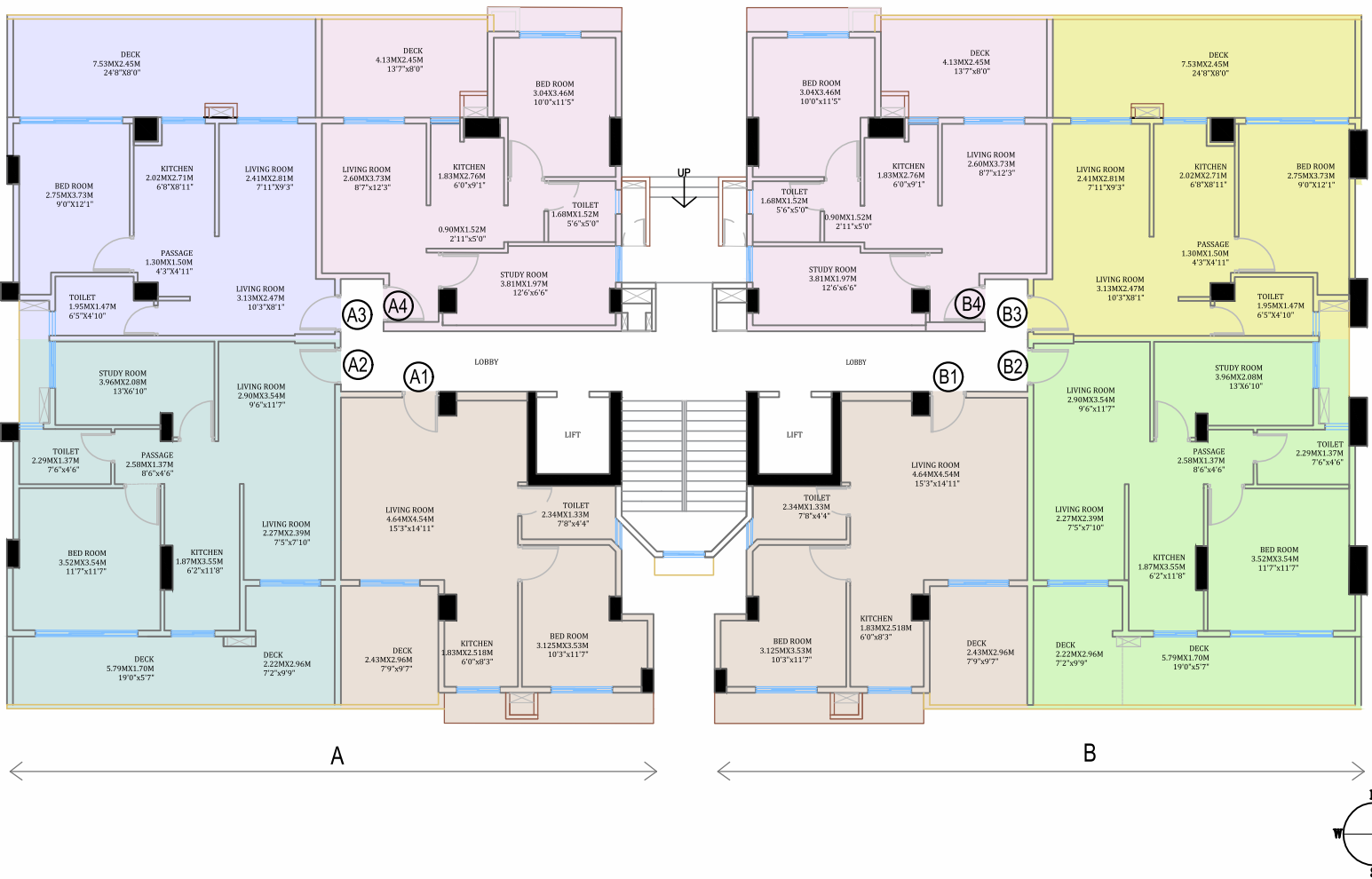
FLAT NO.	TYPE	CARPET AREA		BALCONY AREA		TOTAL	
		SQ.MT.	SQ.FT.	SQ.MT.	SQ.FT.	SQ.MT.	SQ.FT.
A	2 BHK	77.81	837.55	5.86	63.07	83.40	901
B	2 BHK	77.81	837.55	5.86	63.07	83.40	901
C	3 BHK	96.90	1043.03	10.27	110.55	107.17	1154
D	3 BHK	96.90	1043.03	10.27	110.55	107.17	1154
E	2 BHK	79.68	857.68	5.86	63.08	85.54	921
F	2 BHK	79.68	857.68	5.86	63.08	85.54	921



## WINTERGREEN - WING A TYP. FLOOR PLAN



FLAT	TYPE	CARPET AREA		BALCONY AREA		TOTAL	
		SQ.MT.	SQ.FT.	SQ.MT.	SQ.FT.	SQ.MT.	SQ.FT.
A-A1	1 BHK	38.84	418.07	7.19	77.39	46.03	496
A-A2	1 <sup>1/2</sup> BHK	51.88	558.43	15.99	172.11	67.87	731
A-A3	1 BHK	38.95	419.25	18.25	196.44	57.20	616
A-A4	1 <sup>1/2</sup> BHK	41.09	442.29	9.91	106.67	51.00	549
B-B1	1 BHK	38.84	418.07	7.19	77.39	46.03	496
B-B2	1 <sup>1/2</sup> BHK	51.78	557.36	15.99	172.11	67.77	729
B-B3	1 BHK	38.85	418.18	18.25	196.44	57.10	615
B-B4	1 <sup>1/2</sup> BHK	41.09	442.29	9.91	106.67	51.00	549



## WINTERGREEN - WING B 1st FLOOR PLAN

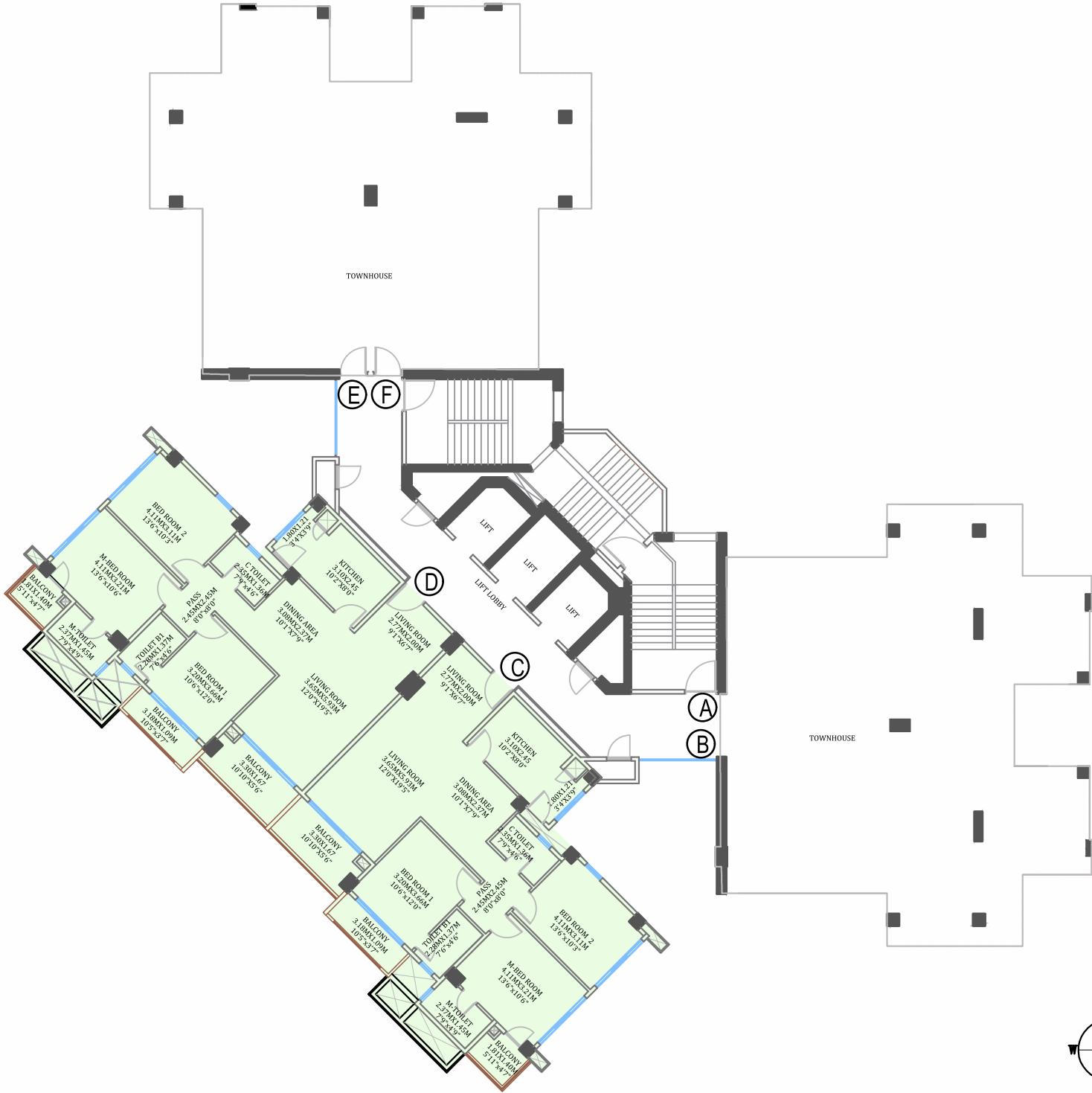
FLAT	TYPE	CARPET AREA		BALCONY AREA		TOTAL	
		SQ.MT.	SQ.FT.	SQ.MT.	SQ.FT.	SQ.MT.	SQ.FT.
A-A1	1 BHK	38.81	417.75	2.83	30.46	41.64	448
A-A2	1 <sup>1/2</sup> BHK	51.88	558.43	2.57	27.66	54.45	586
A-A3	1 BHK	38.95	419.25	0.00	0.00	38.95	419
A-A4	1 <sup>1/2</sup> BHK	41.09	442.29	0.00	0.00	41.09	442
B-B1	1 BHK	38.84	418.07	2.83	30.46	41.67	449
B-B2	1 <sup>1/2</sup> BHK	51.78	557.35	2.57	27.66	54.35	585
B-B3	1 BHK	38.83	417.96	0.00	0.00	38.83	418
B-B4	1 <sup>1/2</sup> BHK	41.09	442.29	0.00	0.00	41.09	442



## WINTERGREEN - WING B TYP. FLOOR PLAN

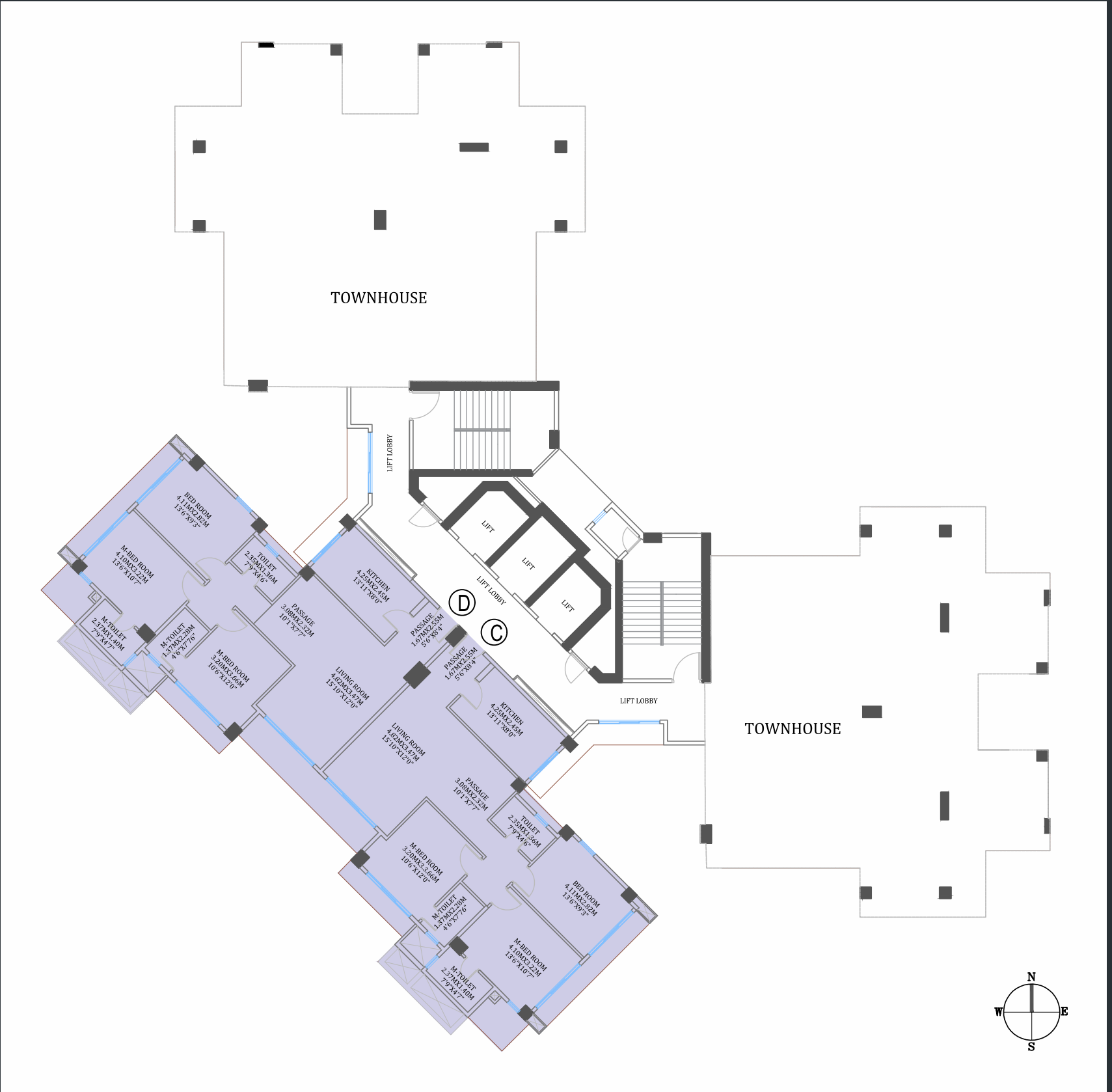


FLAT NO.	TYPE	CARPET AREA		BALCONY AREA		TOTAL	
		SQ.MT.	SQ.FT.	SQ.MT.	SQ.FT.	SQ.MT.	SQ.FT.
C	3 BHK	100.43	1081.03	12.14	130.67	112.57	1212
D	3 BHK	100.43	1081.03	12.14	130.67	112.57	1212



## WINTERGREEN - WING C 1ST FLOOR PLAN

FLAT NO.	TYPE	CARPET AREA		BALCONY AREA		TOTAL	
		SQ.MT.	SQ.FT.	SQ.MT.	SQ.FT.	SQ.MT.	SQ.FT.
C	3 BHK	97.63	1050.88	0.00	0.00	97.63	1051
D	3 BHK	97.63	1050.88	0.00	0.00	97.63	1051



## WINTERGREEN - WING C 2ND FLOOR PLAN



FLAT NO.	TYPE	CARPET AREA		BALCONY AREA		TOTAL	
		SQ.MT.	SQ.FT.	SQ.MT.	SQ.FT.	SQ.MT.	SQ.FT.
A	2 BHK	86.83	934.63	0.00	0.00	86.83	935
B	2 BHK	86.84	934.74	0.00	0.00	86.84	935
C	3 BHK	108.29	1165.62	3.28	35.31	111.57	1201
D	3 BHK	108.29	1165.62	3.28	35.31	111.57	1201
E	2 BHK	86.84	934.74	0.00	0.00	86.84	935
F	2 BHK	86.83	934.63	0.00	0.00	86.83	935



## WINTERGREEN - WING D TYP. FLOOR PLAN

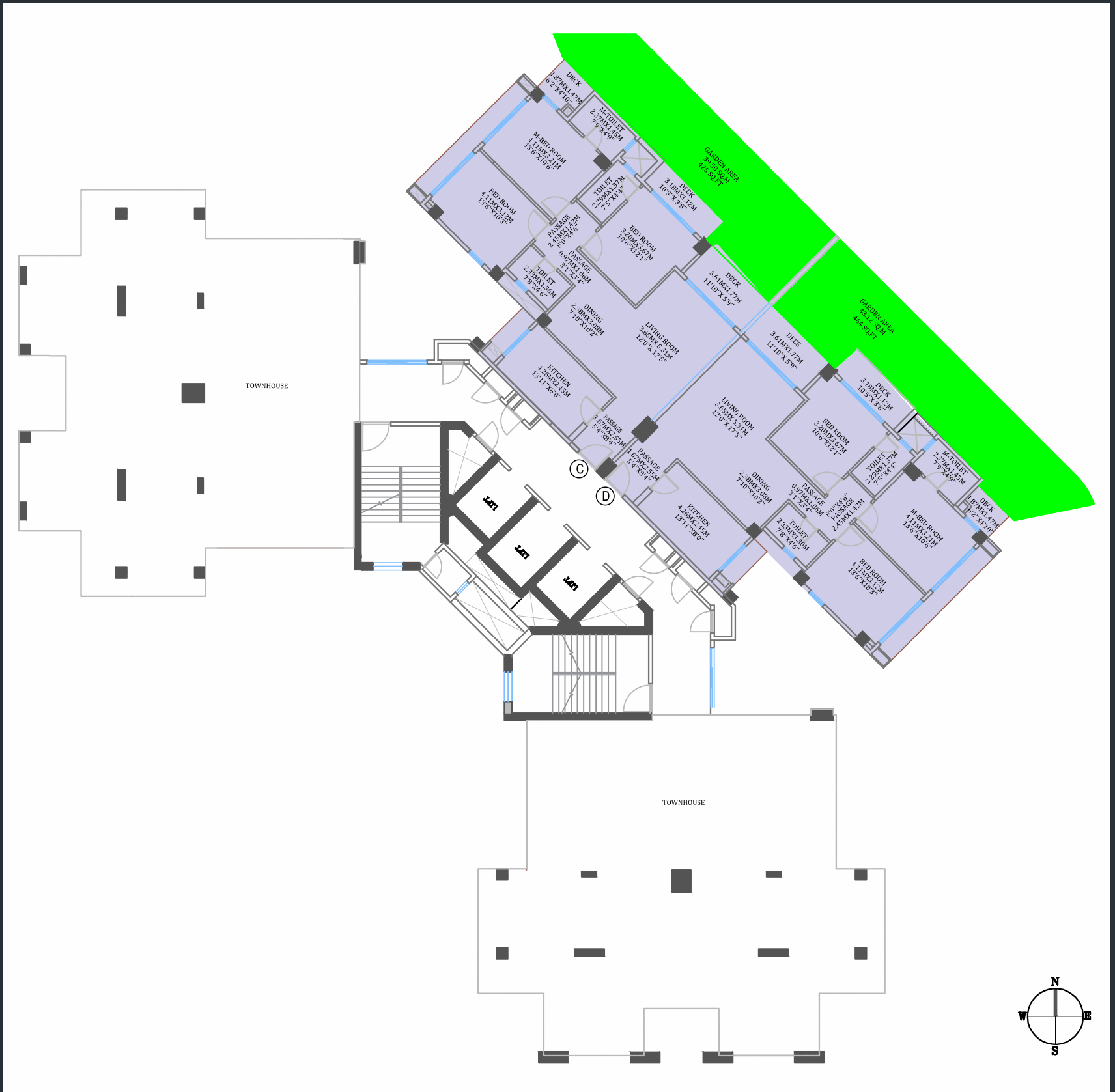
FLAT NO.	TYPE	CARPET AREA		BALCONY AREA		TOTAL	
		SQ.MT.	SQ.FT.	SQ.MT.	SQ.FT.	SQ.MT.	SQ.FT.
A-A1	1 BHK	38.81	417.75	2.83	30.46	41.64	448
A-A2	1 <sup>1/2</sup> BHK	51.88	558.43	2.57	27.66	54.45	586
A-A3	1 BHK	38.95	419.25	0.00	0.00	38.95	419
A-A4	1 <sup>1/2</sup> BHK	41.09	442.29	0.00	0.00	41.09	442
B-B1	1 BHK	38.81	417.75	2.83	30.46	41.64	448
B-B2	1 <sup>1/2</sup> BHK	51.78	557.35	2.57	27.66	54.35	585
B-B3	1 BHK	38.83	417.96	0.00	0.00	38.83	418
B-B4	1 <sup>1/2</sup> BHK	41.09	442.29	0.00	0.00	41.09	442



## WINTERGREEN - WING E TYP. FLOOR PLAN

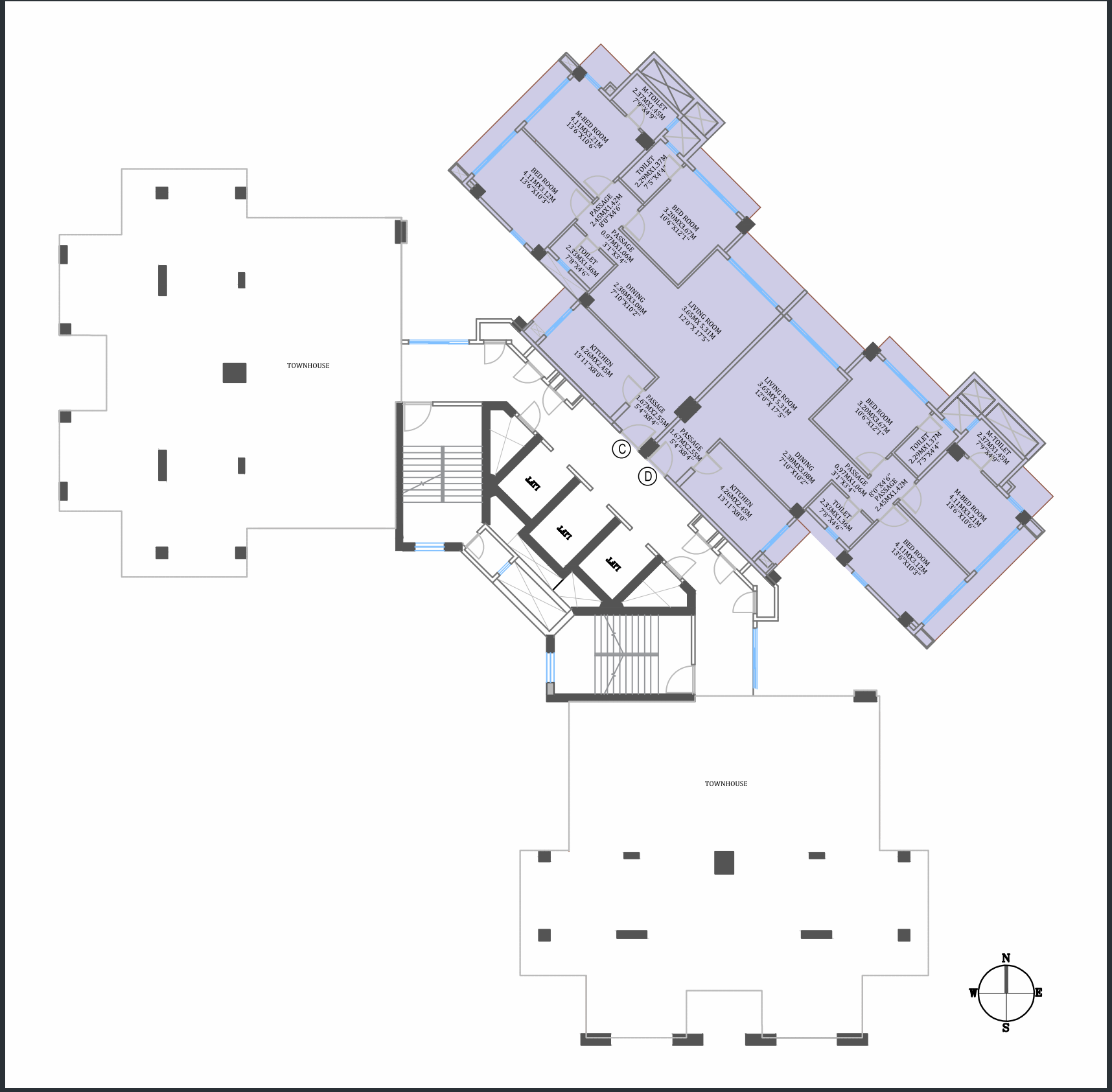


FLAT NO.	TYPE	CARPET AREA		BALCONY AREA		TOTAL		GARDEN AREA	
		SQ.MT.	SQ.FT.	SQ.MT.	SQ.FT.	SQ.MT.	SQ.FT.	SQ.MT.	SQ.FT.
C	3 BHK	100.39	1080.60	12.03	129.49	112.42	1210	39.50	425
D	3 BHK	100.39	1080.60	12.03	129.49	112.42	1210	43.12	464



## WINTERGREEN - WING F 1ST FLOOR PLAN

FLAT NO.	TYPE	CARPET AREA		BALCONY AREA		TOTAL	
		SQ.MT.	SQ.FT.	SQ.MT.	SQ.FT.	SQ.MT.	SQ.FT.
C	3 BHK	97.46	1049	0.00	0.00	97.46	1049
D	3 BHK	97.46	1049	0.00	0.00	97.46	1049



## WINTERGREEN - WING F 2ND FLOOR PLAN

Disclaimer: The information herein i.e. specifications, designs, dimensions, etc. are subject to change without notifications as may be required by the relevant authorities or the Promoter's architect and does not form part of an offer or contract. Whilst every care is taken in providing this information the Co-Promoter, Promoter and managers cannot be held liable for variations. All illustrations and pictures are artistic impressions only. The items are subject to variations, modifications and substitutions as may be recommended by the Promoter's Architect and / or relevant authorities. The information provided in this Advertisement / brochure cannot be produced for legal purposes and the purchaser is not making any advance or deposit payment on the basis of the pictures / photos / visuals / maps shown herein.



# CONNECTIVITY- THE KEY TO A PULSATING LIFESTYLE

Located right on the Western Express Highway. Rivali Park is conveniently located offering easy access to the city centre, the Western and the Central suburbs. It enjoys fully ready social infrastructure, complete with multiple recreational and lifestyle options.



## Connectivity:

- Magathane Metro Station - Just Outside
- Borivali Railway Station - 2 kms (10 mins)
- Five-star hotels in the vicinity - 5 kms (20 mins)
- Business hub of Malad Mind Space - 7 kms (15 mins)
- MIDC, SEEPZ, Andheri-Kurla Road - 14 kms (30 mins)
- International & Domestic Airport - 18 kms (30 mins)
- International & Domestic Airport - 18 kms (30 mins)
- Bandra-Kurla Complex - 20 kms (40 mins)
- Major inter-city link roads like JVLR, Ghodbunder Road just few minutes away
- Central Business District (Nariman Point, Fort) - 35 kms (90 mins)



For details contact : + 91 22 28709200 / 28703700

sales@rivalipark.com • www.rivalipark.com

Project Sales Office: Western Express Highway, Borivali (E).

Project Funded by:

**Indiabulls**  
HOME LOANS

estekads.com

MahaRERA No. : WINTERGREEN-P51800003067, WHITESPRING -P51800002287 • Available at website: <https://maharera.mahaonline.gov.in>

Disclaimer: The information herein i.e. specifications, designs, dimensions, etc. are subject to change without notifications as may be required by the relevant authorities or the Promoter's architect and does not form part of an offer or contract. Whilst every care is taken in providing this information the Co-Promoter, Promoter and managers cannot be held liable for variations. All illustrations and pictures are artistic impressions only. The items are subject to variations, modifications and substitutions as may be recommended by the Promoter's Architect and / or relevant authorities. The information provided in this Advertisement / brochure cannot be produced for legal purposes and the purchaser is not making any advance or deposit payment on the basis of the pictures / photos / visuals / maps shown herein.