

JEET RIVERA

(1st Integrated residential Complex of Varanasi)

your home in the city





A FUTURE DESTINATION BECKONS..

Varanasi Is Indeed The Hub Of The Future In Eastern U.p. The Fast Grooming Express Way And Free Ways Coming Up Will Slash The Driving Time To Airports, Near Cities And Adjoining Towns. World Class Schools, Institutions And Universities To Be Located Here Have Been Already Blue Printed. Projects Like It Parks, Commercial Malls And Hotels Will Catalyze Successful Growth In The Vicinity. Metro Proposed In Near Future Will Further Boost The Investors Interest In This Blessed City Of Varanasi. No Wonder If Varanasi Is Turned Into And Be Pronounced As "new World"

VAASTU SHASTRA

It Is Truly Architecture

Jeet Rivera is totally abide by the vastu parameters which pertains to the physical, psychological and spiritual order of the built environment, in consonance with the cosmic energies.

Five elements of vastu - Earth, Fire, Water, Air & Sky with override the negative forces and indeed will help you and your family members to live a happy & healthy life in Jeet Rivera.





DIRECTORS DESK

Jeet Home Solutions is a leading Real Estate Company with projects all across Eastern U.P. with an endeavor to attain leadership in every market it operates in .

Jeet Home Solutions have the most diversified product mix comprising of Residential, Commercial, I.T. Park, Hotels, School & Institutional Building. We are known for the quality we deliver and is one among few developers to attain ISO 9001:2000 Certificate in eastern U.P.

Our Architectural and engineering team have closely work and studied to achieve both aesthetic and efficient designs and adopting best practices that produce superior quality of construction and management in our projects

DESIGNED TO ITS FINEST MINUTE DETAILS I
INVITE YOU TO ENTER IN MY WORLD OF
NATURE, BEAUTY AND SECURITY

Jeet Rivera is not about residential complex its all about our dreams.

Jitendra Kumar

'Jeet'



An aerial perspective of a modern residential development. On the left, a row of white, rectangular, low-rise apartment buildings is situated. A large, open green field occupies the center of the image. To the right, a multi-lane road with a central green median runs diagonally, featuring several cars and a bus. The entire scene is characterized by lush greenery, including trees and grass, and a clear sky.

OPTIMUM COMFORT AND CONVENIENCE

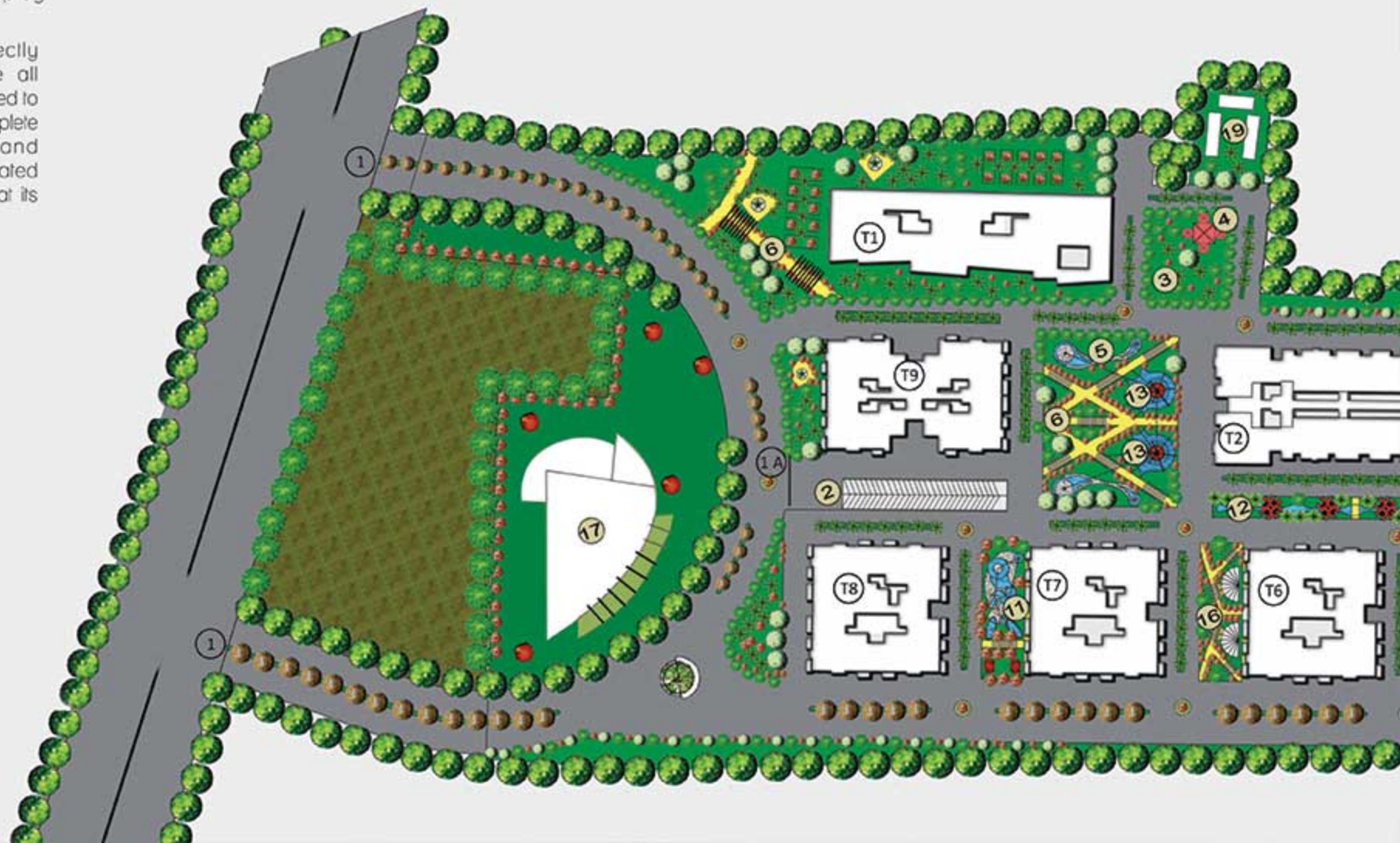
Jeel Rivera is meticulously planned to always keep you closer to nature. With the all-so-rare luxury of wide open spaces, the township brings you exclusive homes in low-rise, gated format, encompassing the joy of warm community living as well as cutting-edge urban amenities in a lush green setting. The enveloping landscapes are a refreshing sight from the terrace balconies. Finely designed cycling tracks will inspire the young and old alike. Warm and friendly community living resulting from an easily accessible neighbourhood will give a fillip to social life across age-groups.

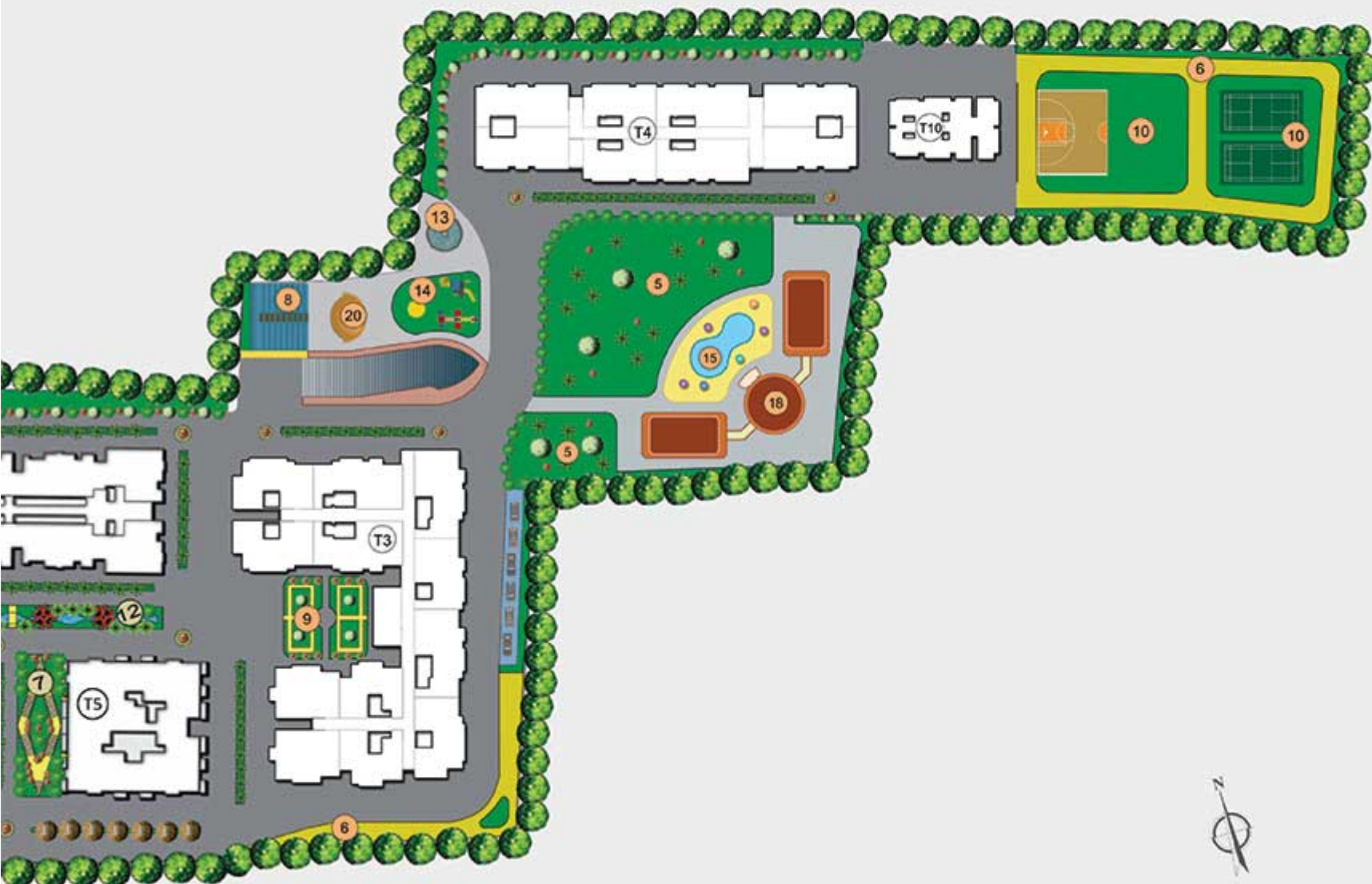
RIVERA INTEGRATED RESIDENTIAL COMPLEX

An oasis of serenity and elegans, Rivera Integrated township is an invitation to live a life filled with outstanding beauty.

Spread Across 5 Acres, the entire condominium complex as been planed around wide open landscape garden, meeting areas and children play ground

Each vibrant apartment perfectly compliments beauty of nature all around and is seamlessly connected to state of art facilities and services. replete with all modern amenities and conveyances, at Rivera Integrated housing complex life will be truly at its best





LEGEND

- 1 Grand Entrance / Exit
- 1A Rivera Entrance
- 2 Ramp
- 3 Mangroves Forest
- 4 Temple
- 5 Botanical Garden / Organic Fruit Orchard
- 6 Jogging Track / Fitness Track
- 7 Cycling Track
- 8 Amphitheatres
- 9 Skating Rink
- 10 Badminton Court / Basketball Court
- 11 Kids Play Area
- 12 Lazy River
- 13 Happy Fountains
- 14 Kids Park
- 15 Wave Pool
- 16 Yoga / Foot Reflexology Deck
- 17 Commercial Mall
- 18 Club House
- 19 Electrical Substation
- 20 Stage
- T1 Bhagirathi
- T2 Mandakini
- T3 Triveni
- T4 Avyakta
- T5 Ramya
- T6 Niranjana
- T7 Ganga
- T8 Nandani
- T9 Ananta
- T10 EWS & LIG





SAFETY & SECURITY

We all feel the safest at home, which is where all our precious possessions are; our family, our wealth, basically our whole world. To safeguard this world that keeps us secure and warm, people are willing to take extreme measures. wouldn't it be great to own a house that kept itself and all our precious belongings protected at all times. The entrance to the complex is from a 24 metre wide road, and opens on to a large open plaza.



A SLICE OF PARADISE

The city Varanasi, unlike other mega cities of the country, boasts of pollution free environment with no traffic jams and clean surroundings. The project by Jeet Homes is no exception. The apartments here are placed right opposite a wide greenbelt, to add to the view are lush greens surrounding the project from three sides of park providing nature's view right from your window.





UNIQUE ARCHITECHTURE

The unique structure of Trivani is the perfect example of how form and function complement each other to accommodate all the necessities of modern living, while ensuring the efficient use of space.

The residential towers are designed in a unique clover shape to ensure you complete privacy with maximum space utilization and an exclusive entrance. Each of the fully air-conditioned 2 And 3 BHK apartments open on three sides that offer excellent ventilation.





RECREATIONAL SPACES

Large green stretches here have been landscaped to create jogging trails, quiet corners and exotic flower beds. At the center of it, is a vast green space, cut off from howling city traffic. There is an orchard and botanical garden to envelop you in sea of unruffled calm





CLUB CLASS LIVING

Aesthetics is a recurring motif throughout Diplomatic Greens. So much so that even our Club House is a treat for the senses. The wave pool is a stream of consciousness, while a backdrop of vertical gardens rises to meet the gym, touching the terrace gardens.

This unique landscape creates unending green on both horizontal and vertical planes. Further, the presence of Water within and in the surroundings is sublimely refreshing. This juxtaposition of land and water elements in the landscape makes Diplomatic Greens an architectural marvel and the Club House, a oasis for the soul.





LUXURY LIVING

Experience luxury living at its most intimate. Jeet Rivera with a distinctive design, rises above all as a signature statement futuristic lifestyle. Indulge in myriad of entertainment and leisure options in the vicinity including malls, parks and more. Conveniently located with easy access to the most happening sports of the city, reputed educational and healthcare institutions.





NIGHT VIEW



UNIT-01- 3 BHK
SUPER AREA- 1551 SQ. FT.
FLAT NO. - 101 TO 1001



UNIT-02- 3 BHK
SUPER AREA- 1455 SQ. FT.
FLAT NO. - 102 TO 1002



UNIT-03- 3 BHK
 SUPER AREA- 1455 SQ. FT.
 FLAT NO. - 103 TO 1003



UNIT-04- 3 BHK
SUPER AREA- 1551 SQ. FT.
FLAT NO. - 104 TO 1004



UNIT-05 & 07- 3 BHK
 SUPER AREA- 1551 SQ. FT.
 FLAT NO. - 105 TO 1005
 & 107 TO 1007



UNIT-06- 2 BHK
 SUPER AREA- 1312 SQ. FT.
 FLAT NO. - 106 TO 1006



UNIT-08- 3 BHK
SUPER AREA- 1455 SQ. FT.
FLAT NO. - 108 TO 1008



UNIT-09- 2 BHK
SUPER AREA- 1180 SQ. FT.
FLAT NO. - 109 TO 1009



UNIT-10- 3 BHK
 SUPER AREA- 1385 SQ. FT.
 FLAT NO. - 110 TO 1010



UNIT-11- 3 BHK
 SUPER AREA- 1385 SQ. FT.
 FLAT NO. - 111 TO 1011



UNIT-12- 2 BHK
SUPER AREA- 1180 SQ. FT.
FLAT NO. - 112 TO 1012



YOUR INNER SPACE

Every Room at Triveni has been thoughtfully planned to make you instantly fall in love with the space and elevate the quality of your life. These smartly laid out homes, together with the unique structure of the building, ensure an abundance of natural light and ventilation.



LIST OF AMENITIES

24 Water Supply

24 X 7 Power Back up

Hi Tech Security

Ample Parking Space

Under ground Drainage System

Fire Alarm System

Earthquake resistant structure

Storm water drain

Rain water Harvesting pit to replenish ground water

Environment Friendly waste disposal, sewage treatment and incinerators

Underground cabling for telephone & electricity distribution

Regulated underground and over head water supply

Township maintenance and upkeep by reputed maintenance agency

Vaastu friendly

Intercom

Wi-fi Complex

Broadband Internet connection

Library

Banquet Hall

Jogging Track

Kids play area

Club House

Temple

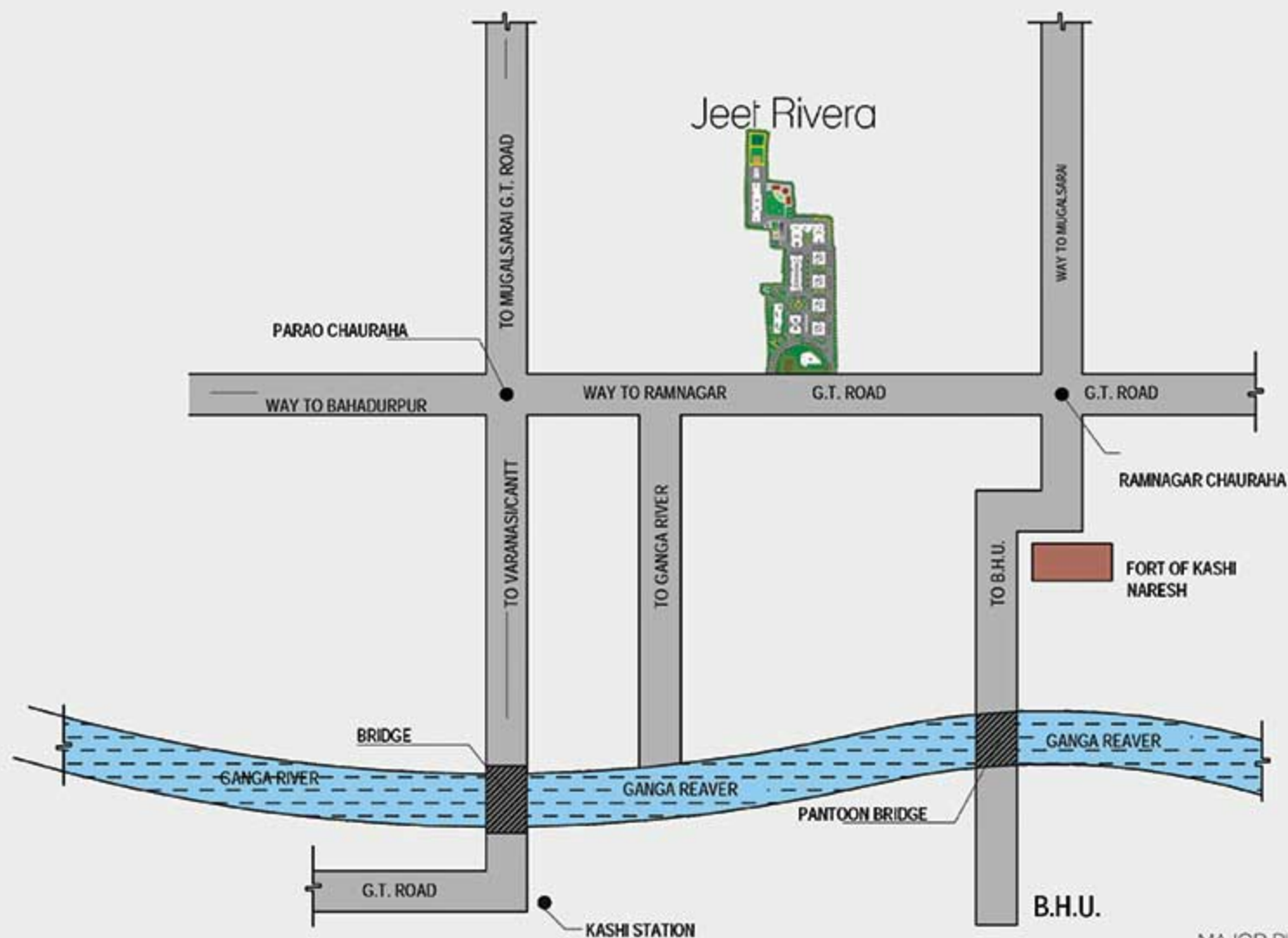
Swimming Pool

Shopping Mall

Badminton Court / Basketball Court

SPECIFICATION

STRUCTURE	Earthquake Resistant RCC framed structure designed by qualified structural engineers.
FLOORING	Living / Dinning / Bedrooms 2" X 2" Vitrified Tiles. KITCHEN / BALCONY / TOILETS Anti Skid Ceramic Tiles STAIRS Selected Marble / Kota CORRIDORS Anti Skid Ceramic Tiles. PARKING & DRIVE WAY Paved / Concrete
WALL FINISH	Living / Dinning / Bedrooms Pop base with Oil Bound Distemper (OBD) External Facade of Walls / Weather Coat / Equivalent Paint KITCHEN Designer Ceramic Tiles dado upto 2' Above working Granite. Platform / Counter and Pop base with OBD in remaining are. TOILET Designer Ceramic Tile dado upto 7' height and POP base with OBD in remaining area. BALCONY Weather Coat / Equivalent Paint. LIFT LOBBIES Selected marble / Granite Cladding
CEILING	Living & Dining POP Base with OBD and cornice. BEDROOMS POP base with OBD. KITCHEN / TOILET / BALCONY POP base with OBD DOOR & WINDOWS Doors Skin Panel Doors. WINDOWS Painted Hardwood Frame & Fully glazed shutters with MS Grill and Powder Coated Fitting.
CP FITTING / FIXTURES	Kitchen Jaguar / Equivalent Stainless Steel sink. TOILET Jaquar / Equivalent Single Lever Diverter, Coventional Fittings. UTILITY BALCONY Point for washing Machine
SANITARY WARE	Cera / Equivalent White or off White Colour.
ELECTRICAL WORK / POINT	Living / Dinning / Bedrooms Provision for AC Points in Drawing / Dining Provision for AC Point with wiring in Bedrooms. KITCHEN Power Point for Fridge, Exhaust Mixer, Grinder, Water Purifier TOILETS Geyser Points.
RAILINGS	BALCONY MS Railing with Ms Handrail



LOCATION PLAN

JEET HOME is located at the centre of Parao & Ramnagar Market. The Distance between Jeet Home and major places

MAJOR PLACE	DISTANCE
Ramnagar Fort	3.0 KM
BHU	4.0 KM
Dashashwamedh	2.0 KM
CANTT. Rly. Station	8.0 KM
Kashi Rly. Station	2.5 KM
Mughalsaria Rly. Station	7.0 KM
Ganga River	1.5 KM
Babalpur Airport	28 KM





JEET HOME SOLUTIONS PVT. LTD.

Raj Complex, Parao Chauraha, Parao, Varanasi, Uttar Pradesh - 221008

Ph.: 0542-2338331

Mob.: 08400002162, 08400002164

E-mail: info@jeethomesolutions.com,

Web: www.jeethomesolutions.com

Architect :

PRADEEP GUPTA & TEAM

Geometric Design Studio Pvt. Ltd.

Architecture | Interior Designer | Structure | Electrical | Plumbing

52- Prashantpuri, D. I. G. Colony, Maqbool Aalam Road, Varanasi 221002 (U. P.)

Mob.: + 91 9453018242 Office Ph.: 0542-2511515

Email: geometricdesigns@gmail.com, pradeepgeometricdesigns@gmail.com