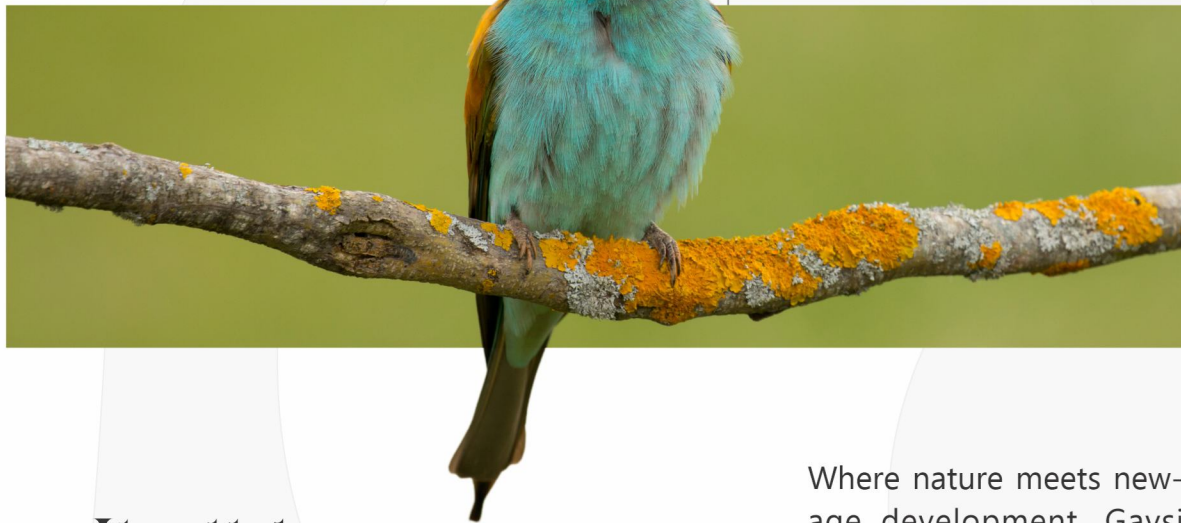




**MAULI**  
INFRA  
a **trusted** piece of Earth.

**MAULI**   
*Apavan*  
a **trusted** piece of Earth.

MAULI   
*Uparan*  
a **trusted** piece of Earth.



It all began  
with a Songbirds  
quest for harmony.  
for home.

Where nature meets new-age development, Gavsri rises into its next evolution. Holding on to the charm of old Gavsri while embracing upgraded infrastructure, modern landmarks, and seamless connectivity, this is a new chapter—greener, bolder, and beautifully refined.



MAULI   
*Apavan*  
a **trusted** piece of Earth.

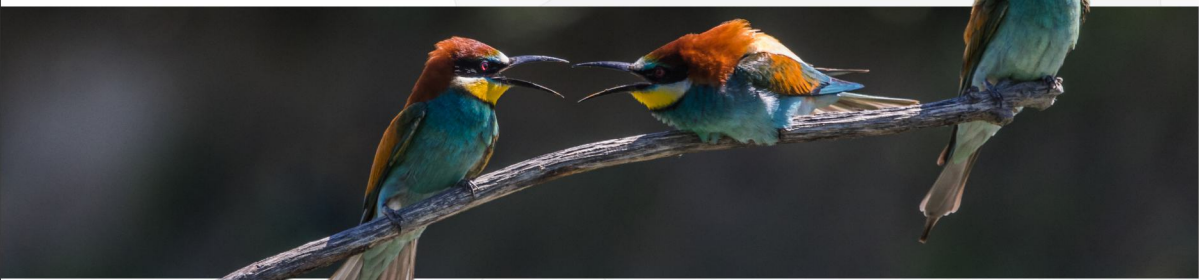


Soon,  
the songbird began  
weaving its dream  
into a nest.

Nature knows best—and at Mauli,  
we understand what modern  
living truly requires. Guided by  
instinct, just like a bird choosing  
the perfect branch, we've selected  
every element with care: mindful  
architecture, sustainable design,  
robust security, and effortless  
everyday comfort.



MAULI   
*Apavan*  
a **trusted** piece of Earth.



the songbird  
found not just a place  
to nest but a flock to  
belong to.

A neighbourhood  
where every bird sing  
its own tune, together.



MAULI   
*Uparan*  
a **trusted** piece of Earth.



It began with a bird.  
And a feeling  
called home.

Nature at heart. Progress in every detail. A greener, bolder, beautifully refined new chapter.





### SALIENT FEATURES

- Lavish Entrance Gate
- Entrance Deck & Garden
- Grandparents Park
- Jogger's Park
- Kids Park
- Yoga Park
- Drainage
- Drinking Water Line

PLOT NO.	AREA IN SQ.M.	AREA IN SQ.FT.
1	477.660	5141.53
2	477.323	5137.91
3	460.737	4959.37
4	723.895	7792.00
5	514.987	5543.32
6	131.625	1416.81
7	121.042	1302.90
8	127.274	1369.98
9 & 10	125.611	1352.08
11	161.600	1739.46
12 TO 16	152.000	1636.13
17	148.800	1601.68
18	151.197	1627.48
19	132.429	1425.46
20 & 21	105.000	1130.22
22 & 23	134.774	1450.71
24	112.500	1210.95
25	134.231	1444.86
26	125.538	1351.29
27	124.998	1345.48
28	452.845	4874.42
29	593.230	6385.53

Site Address: Kh. No. 45/1/A/2, P.h.No. 42,  
Mouza-Gawasimanapur, Tah.- Nagpur(R) Distt. Nagpur.

### Location Map



### Nearby Location

- IIT 1 minutes
- Gaikawad Patil School 2 minutes
- Mohgaon Metro Station 2 minutes
- Butibori 5 minutes
- Samruddhi Highway 15 minutes
- Mihan 10 minutes
- AIIMS 10 minutes
- Suretech Hospital 5 minutes
- VCA 5 minutes
- Airport 15 minutes
- Khapari Metro Station
- VCA Stadium
- Brahmakumari
- Suretech Hospital
- Indian Oil Petrol Pump
- Jamtha
- Butibori
- IIT Nagpur
- LAW University
- KK Sanskrit University Abhinav Bharati



# MAULI INFRA

a **trusted** piece of Earth.

Prince Castle, Plot No. 105, Opp. Madhav Netralay, Gajanan Nagar,  
Wardha Road, Nagpur - 440015.  
Email: mauliinfra06@gmail.com

**Call:**

MAHARERA  
Registration No.  
PP1190002500524



[maharera.mahaonline.gov.in](http://maharera.mahaonline.gov.in)

