



+ YOUR DREAM HOME AWAITS +

## PROJECT HIGHLIGHTS



88 Spacious Apartments



Selected Apartments With Private Terraces



Posh Residential Area



65% Open Area



24X7 Security



2 No B+G+9 Towers



Basement Parking With Seperate Visitors Car Parking Area



3 Side Open Flats



## WELCOME TO YOUR URBAN PARADISE!

Promoters of Panchwati Elite have versatile background with an experience of making Buildings of more than 1000 Flats.

Our mission at Panchwati Builders is to create spaces which our beloved customers can proudly, lovingly and happily call them their "Home"

Vision of Panchwati Builders is build landmarks that redefines concept of urban living in Ranchi

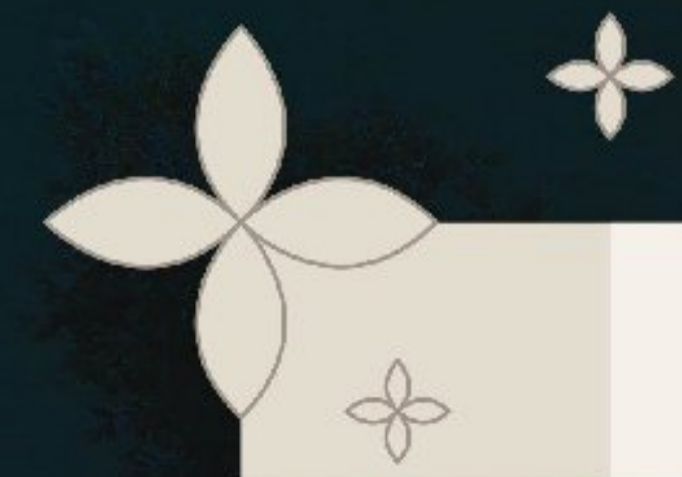
**A LIFE OF BLISS BECKONS!**



AERIAL VIEW



Panchwati Elite



NIGHT VIEW



Multi Gym With Apparatus



CCTV Camera  
for Common Area in Ground Floor



Vastu Friendly Apartments



Open Children Play Area



Experience the wonders of sustainable living at Panchwati Elite! The project features a number of environment friendly facilities like landscaped gardens, solar lights, electric vehicle charging points and more to keep your life green and comfortable!



# SPECIAL FEATURES



Solar Light For Common Area (Partly)



Electric Charging Facility For Vehicles  
At Visitor's Parking Area



Soundproof Generator Facility



Visitors Car Parking Area



Steam Bath



Society Office



# SPECIAL FEATURES

Panchwati Elite will be the perfect place for both work and leisure! You'll find top of the line gymnasium and spa facilities here, along with society office space & car parking. Get ready to live the life of true convenience here!



## Terrace Amenities



Landscaped Garden With Children Play Equipments



Night Sky Observatory



Outdoor Gym



Space for Corner Cafeteria



Lounge Space with Sit Out Deck



Dive into your moments of joy at Panchwati Elite! The project brings you ample amenities to help you both unwind and celebrate, with a swimming pool, sports centre and community hall! Savour the joys of community living, everyday!



Swimming Pool



Rain Water Harvesting



Terrace Garden



Departmental Store for Groceries etc.



Provision for Gas Pipeline in Kitchen from GAIL, India



# SPECIAL FEATURES



Double Height Community Hall - (AC) with Kitchen



Common Toilets For Drivers & Servants



Covered Space For Sports Centre (Double Height)



COMMUNITY HALL



GYMNASIUM VIEW



GATE VIEW



GARDEN VIEW



SWIMMING POOL VIEW



# SPECIFICATIONS

## FRAME STRUCTURE

R.C.C.

## FINISHING OF INTERNAL WALL IN FLAT

P.O.P. over cement plaster

## COMMON AREA WALL

Plastic Paint over P.O.P.

## FINISHING OF EXTERNAL WALL

External Acrylic water proof paint over Texture

## WINDOW

Three Track Aluminium/UPVC Window

## DOOR

Flush Door

## DOOR FRAME

Sal Wood Frame

## FLOORING INSIDE FLAT

DRAWING, DINNING, BED ROOM

Vitrified Tiles 4'x2'

KITCHEN

Floor Tiles 2'x2'

TOILET FLOOR

Anti Skid Floor Tiles 1'x1'

## LOBBY/PASSAGE

Vitrified Tiles 2'x2'

## STAIR

Granite Floor

## KITCHEN

Black Granite Cooking platform with stainless steel sink

2' height ceramic tiles dado over cooking platform

## WINDOW SEAL

Granite



# COMMON SERVICES

## WATER SUPPLY

Through overhead tank from Two Nos. deep tube well boring

## GENERATOR FACILITY

Sound Proof Generator for Common Area, Lift, & 1000 Watts Each Flat

## LIFT

4 Nos Stainless Steel Automatic Lift - Two Lift in each block

## FIRE FIGHTING SYSTEM

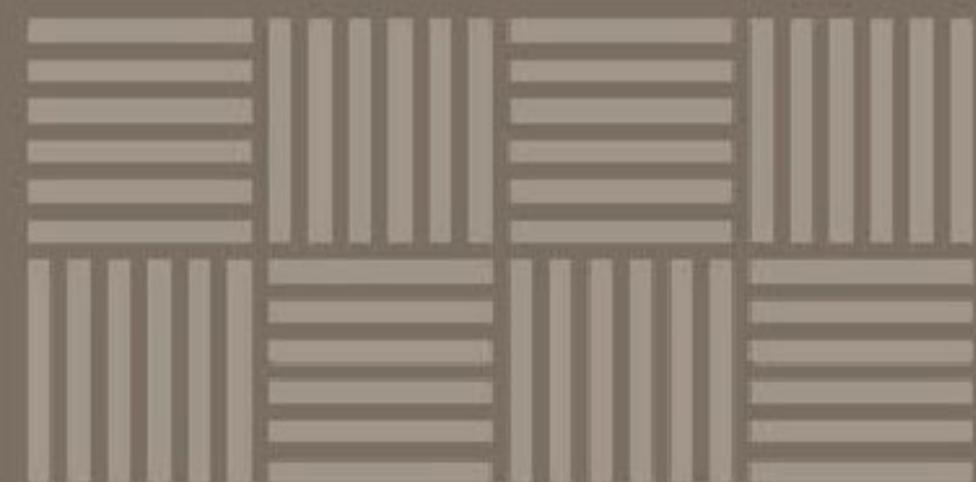
As per norms

## INTERCOM

Intercom Facility with One Nos. Handset to each flat.

## Note

Changes are possible with the consent & advice of Architect



## TOILET

7' height ceramic tiles in walls

White basin and Wall Hung Commode

Grohe/Jaguar or equivalent C.P. sanitary fitting

## ELECTRIFICATION

Concealed electrical wiring with modular switches

A.C. Point in all bed room & drawing room

Cable TV point in all bed room and drawing room

Aqua Guard point in Kitchen

Geyser point in toilets & Kitchen

Washing Machine point



# SITE PLAN



# FLOOR PLAN



## BLOCK - A 1ST FLOOR

FLAT NO.	BHK	RERA C.P.	S.B. AREA
1	4	1558 sqft	2480 sqft
2	3	957 sqft	1452 sqft
3	3	967 sqft	1495 sqft
4	3	967 sqft	1650 sqft



# FLOOR PLAN



## BLOCK - A TYPICAL 2ND TO 9TH FLOOR

FLAT NO.	BHK	RERA C.P.	S.B. AREA
1	4	1558 sqft	2310 sqft
2	3	957 sqft	1452 sqft
3	3	967 sqft	1495 sqft
4	3	967 sqft	1520 sqft
5	3	967 sqft	1520 sqft



# FLOOR PLAN



## BLOCK - B 1ST FLOOR

FLAT NO.	BHK	RERA C.P.	S.B. AREA
2	3	967 sqft	1678 sqft
3	3	967 sqft	1505 sqft
4	3	967 sqft	1440 sqft
5	4	1560 sqft	2490 sqft



# FLOOR PLAN



## BLOCK - B TYPICAL 2ND TO 9TH FLOOR

FLAT NO.	BHK	RERA C.P.	S.B. AREA
1	3	967 sqft	1520 sqft
2	3	967 sqft	1535 sqft
3	3	967 sqft	1505 sqft
4	3	967 sqft	1440 sqft
5	4	1560 sqft	2340 sqft



# UNIT PLANS

BLOCK - A 1ST FLOOR  
 Flat No. - 101 4BHK  
 Rera Carpet - 1558 sqft  
 S.B. Area - 2480 sqft



BLOCK - A 1ST TO 9TH FLOOR  
 Flat No. - 102-902 3BHK  
 Rera Carpet - 957 sqft  
 S.B. Area - 1452 sqft



# UNIT PLANS

BLOCK - A 1ST TO 9TH FLOOR  
 Flat No. - 103-903 3BHK  
 Rera Carpet - 967 sqft  
 S.B. Area - 1495 sqft



BLOCK - A 1ST TO 9TH FLOOR  
 Flat No. - 104-904 3BHK  
 Rera Carpet - 967 sqft  
 S.B. Area - 1520 sqft



# UNIT PLANS

BLOCK - A 2ND TO 9TH FLOOR  
 Flat No. - 201-901 4BHK  
 Rera Carpet - 1558 sqft  
 S.B. Area - 2310 sqft

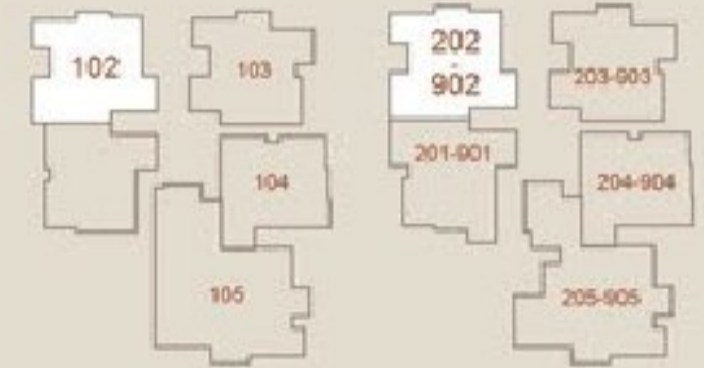


BLOCK - A 2ND TO 9TH FLOOR  
 Flat No. - 205-905 3BHK  
 Rera Carpet - 967 sqft  
 S.B. Area - 1520 sqft

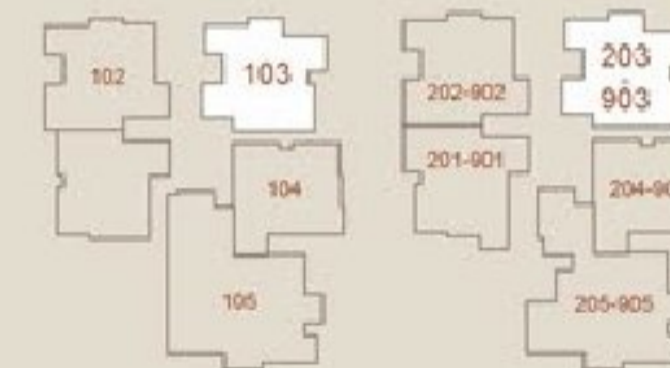


# UNIT PLANS

BLOCK - B 1ST TO 9TH FLOOR  
 Flat No. - 102-902 3BHK  
 Rera Carpet - 967 sqft  
 S.B. Area - 1535 sqft

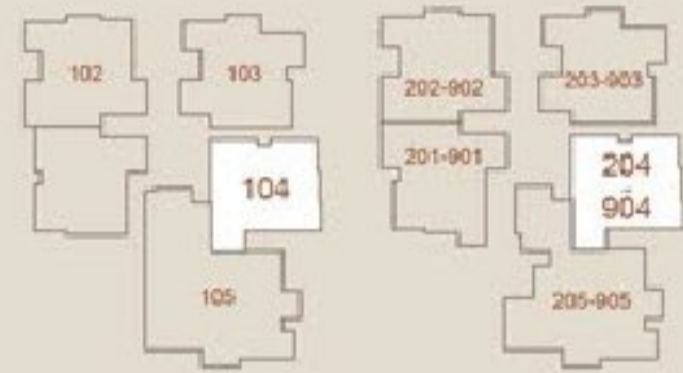


BLOCK - B 1ST TO 9TH FLOOR  
 Flat No. - 103-903 3BHK  
 Rera Carpet - 967 sqft  
 S.B. Area - 1505 sqft



# UNIT PLANS

BLOCK - B 1ST TO 9TH FLOOR  
 Flat No. - 104-904 3BHK  
 Rera Carpet - 967 sqft  
 S.B. Area - 1440 sqft



BLOCK - B 1ST FLOOR  
 Flat No. - 105 4BHK  
 Rera Carpet - 1560 sqft  
 S.B. Area - 2490 sqft



# UNIT PLANS

BLOCK - B 2ND TO 9TH FLOOR  
 Flat No. - 201-901 3BHK  
 Rera Carpet - 967 sqft  
 S.B. Area - 1520 sqft



BLOCK - B 2ND TO 9TH FLOOR  
 Flat No. - 205-905 4BHK  
 Rera Carpet - 1560 sqft  
 S.B. Area - 2340 sqft



## ISOMETRIC VIEW



BLOCK - A 2ND TO 9TH FLOOR

Flat No.	Bhk	Rera Carpet	S.B. Area
201-901	4	1558 sqft	2310 sqft

## ISOMETRIC VIEW



BLOCK - B 2ND TO 9TH FLOOR

Flat No.	Bhk	Rera Carpet	S.B. Area
201-901	3	967 sqft	1520 sqft

# LOCATION MAP



## KEY DISTANCES

- |   |   |
|---|---|
| Surendranath School<br>1.3 Km (Approx.) | Khadgarah Bus Depot<br>6.0 Km (Approx.) |
| RIMS Hospital<br>1.5 Km (Approx.)       | Ranchi Rail Station<br>7.0 Km (Approx.) |
| Karamtoli Chowk<br>3.0 Km (Approx.)     | Birsa Munda Airport<br>13 Km (Approx.)  |

# COMPLETE & ONGOING PROJECTS



**PANCHWATI IVY PHASE II**  
Murramkala, Ramgarh



**PANCHWATI RESIDENCY**  
Kanke Road, Ranchi



**PANCHWATI WAXPOL**  
Kanke Road, Ranchi



**SHREE KUNJ**  
Bariatu Road, Ranchi



**RAM JYOTI**  
Kanke Road, Ranchi



**PANCHWATI TOWER**  
Harmu Road, Ranchi



Panchwati Elite

FRONT VIEW