



SKYi
MANAS LAKE

tower 01

Premium 2 bhk & 3 bhk Apartments



Computer generated image. Artist's impression. image not to scale.

SKYi

MANAS LAKE



SKYi MANAS LAKE

The Residences

- Phase 1 Building 1, 2 & 3
- Phase 2 Building 4 & 5
- Phase 3 Building 8
- Phase 4 Under Planning

* Terms & Conditions apply

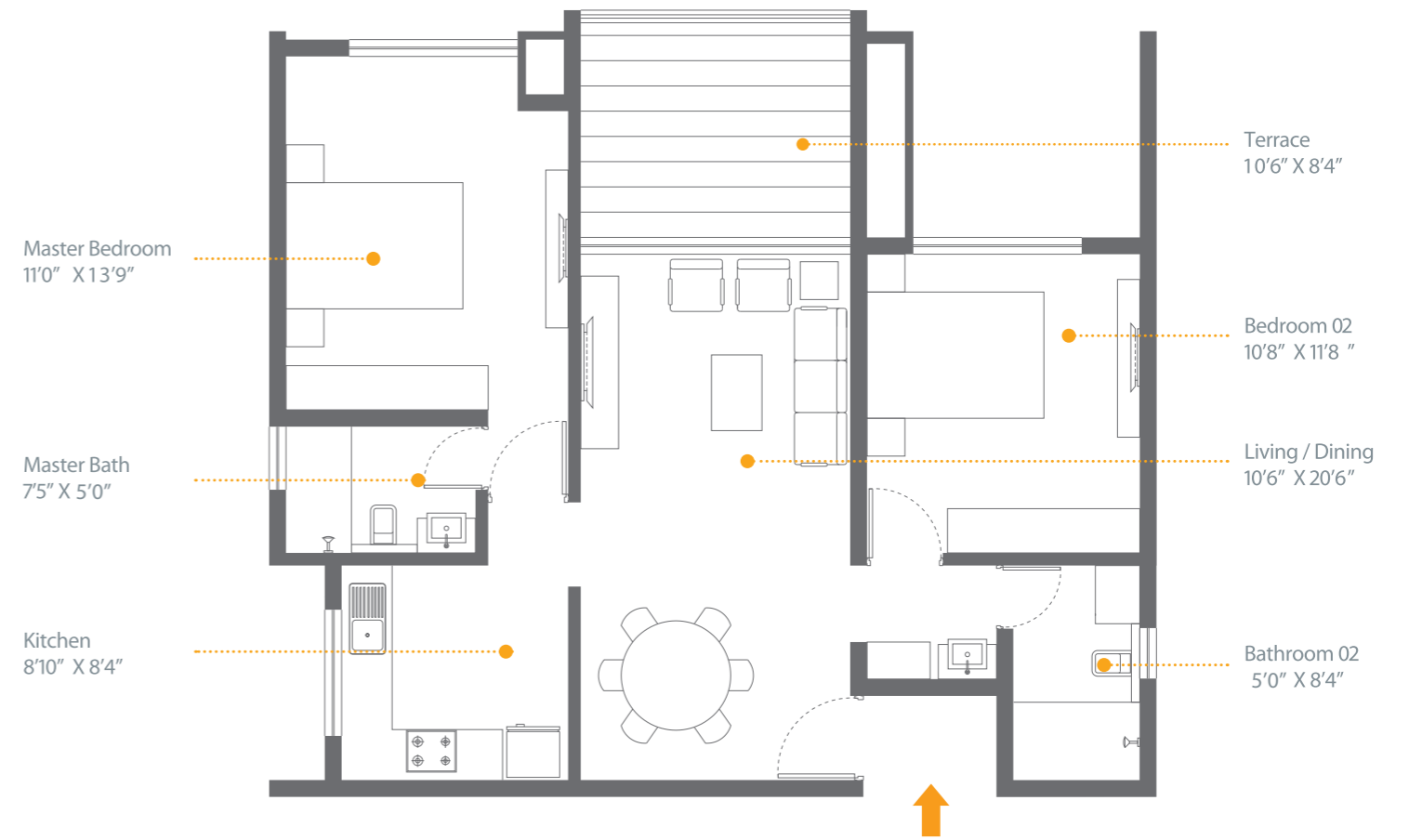
Amenities & Features

- | | |
|----------------------------------------------|--------------------------------------------------------------------------------------|
| A Main Access Road | F Sports Facilities
· Tennis Court
· Futsal Court
· Basketball Court |
| B Main Entrance Gate | G Utilities |
| C 4 Lane Internal Road | FD Future Development Under Planning |
| D Multi Purpose Ground / Central Park | FD* Reserved for Proposed Building |
| E Toddler Play Area | |

2 BHK

ODD FLOORS

1087 L



Master Bedroom
11'0" X 13'9"

Master Bath
7'5" X 5'0"

Kitchen
8'10" X 8'4"

Terrace
10'6" X 8'4"

Bedroom 02
10'8" X 11'8"

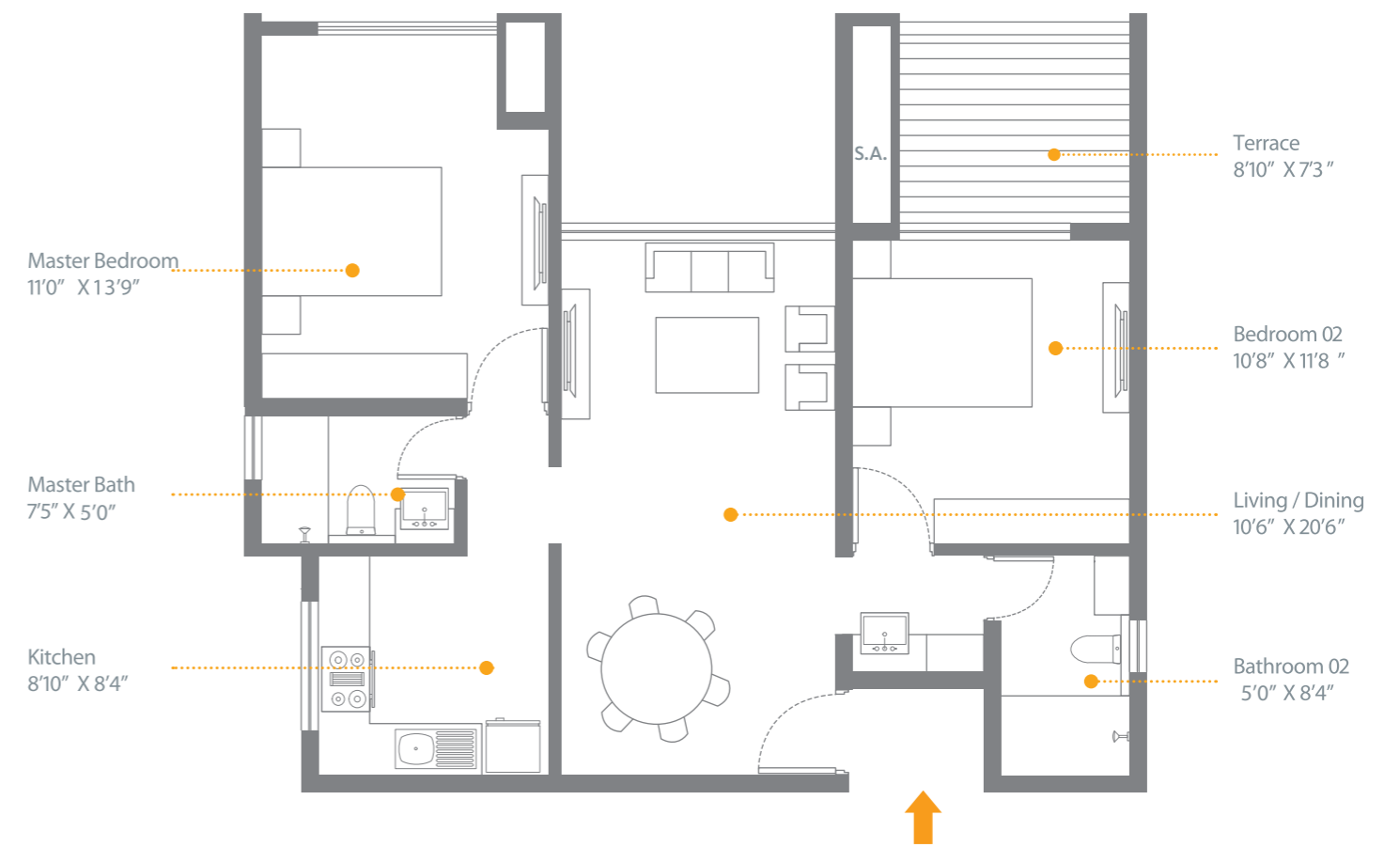
Living / Dining
10'6" X 20'6"

Bathroom 02
5'0" X 8'4"

2 BHK

EVEN FLOORS

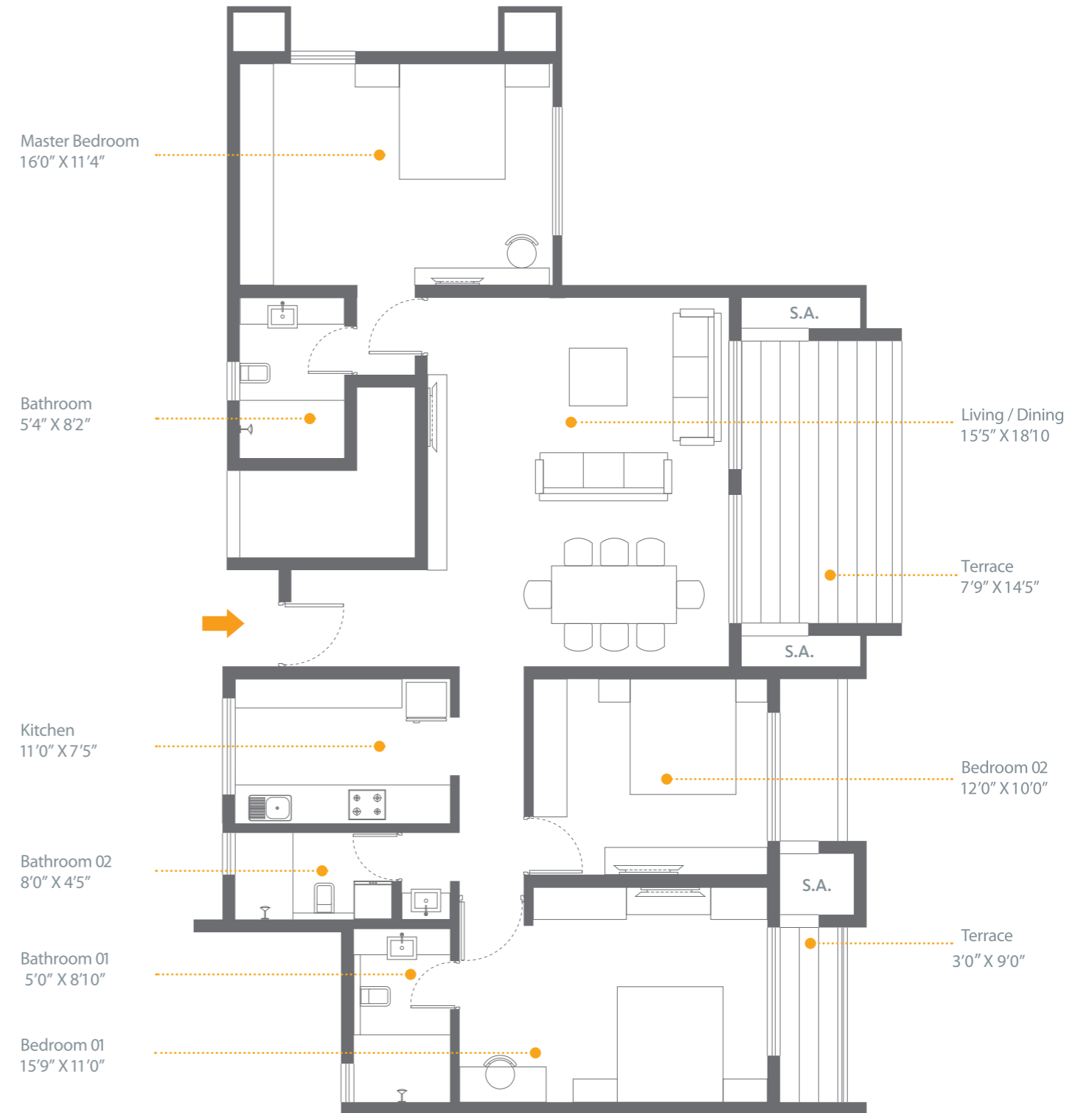
1061 L



3 BHK

ODD FLOORS

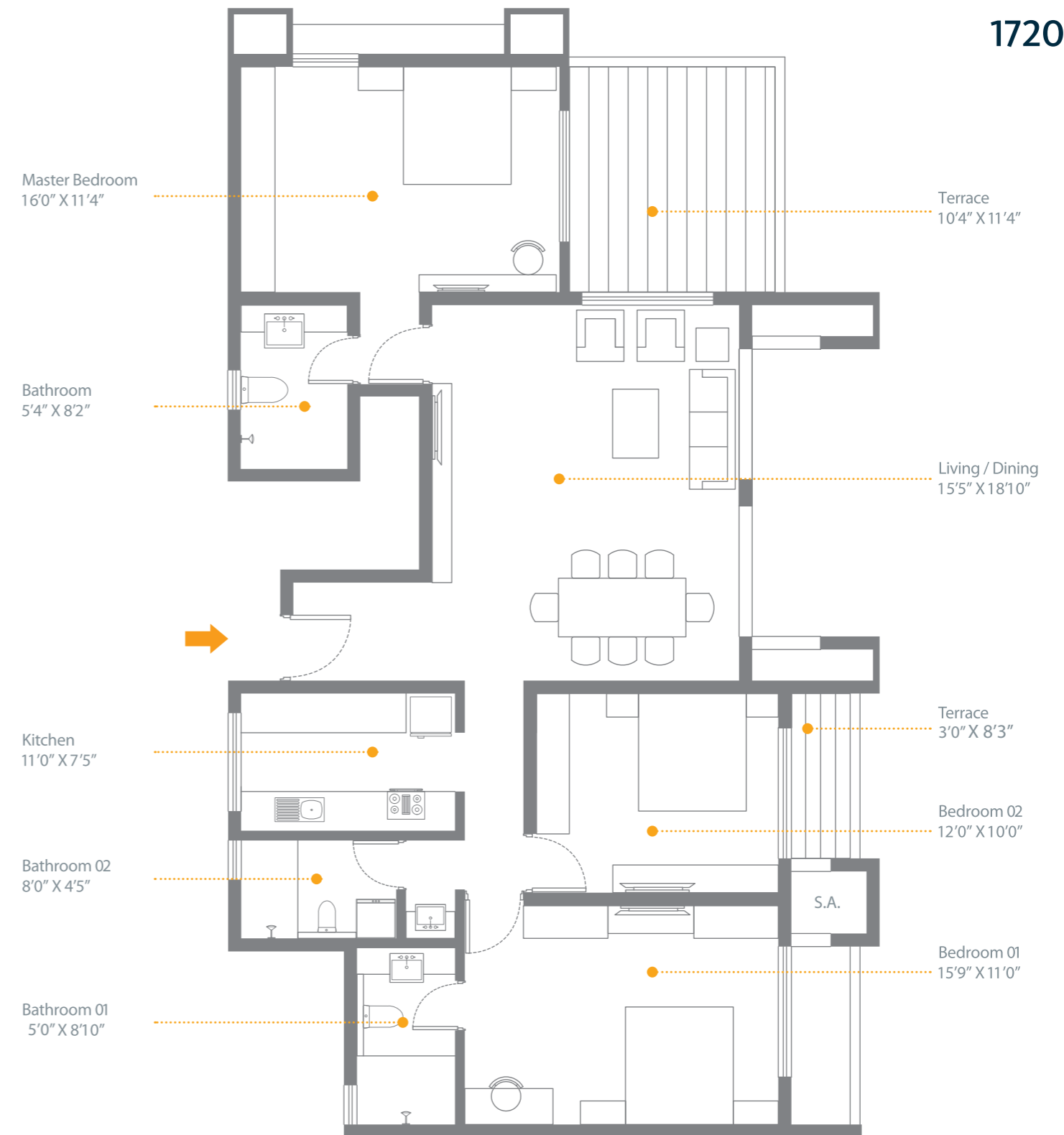
1726 XL



3 BHK

EVEN FLOORS

1720 XL



Odd Floor Plan

Tower No. 01

101, 301, 501,
701, 901, 1101

2 BHK

PRODUCT CODE
1087 L

106, 306, 506,
706, 906

102[#], 302, 502,
702, 902

3 BHK

PRODUCT CODE
1726 XL

105, 305, 505,
705, 905

103[#], 303, 503,
703, 903

3 BHK

PRODUCT CODE
1737 XL

104, 304, 504, 904, 1104



Refer Area Statement

Even Floor Plan

Tower No. 01



Area Statement

PRODUCT CODE	USABLE AREA	
1945 XL[#]	1446 sq.ft.	<p>PRODUCT CODE 1945 XL</p> <p>Usable Area = Carpet Area* + Terrace / Balcony + Service Area 1446 sq.ft. (134 sq.mt.) = 1125 sq.ft. (104.5 sq.mt.) + 300 sq.ft. (27.85 sq.mt) + 22 sq.ft. (2 sq.mt.)</p>
1737 XL	1295 sq.ft.	<p>PRODUCT CODE 1737 XL</p> <p>Usable Area = Carpet Area* + Terrace / Balcony + Service Area 1295 sq.ft. (120 sq.mt.) = 1125 sq.ft. (104.5 sq.mt.) + 138 sq.ft. (12.79 sq.mt) + 32 sq.ft. (3 sq.mt.)</p>
1726 XL	1284 sq.ft.	<p>PRODUCT CODE 1726 XL</p> <p>Usable Area = Carpet Area* + Terrace / Balcony + Service Area 1284 sq.ft. (119 sq.mt.) = 1125 sq.ft. (104.5 sq.mt.) + 138 sq.ft. (12.79 sq.mt) + 22 sq.ft. (2 sq.mt.)</p>
1720 XL	1277 sq.ft.	<p>PRODUCT CODE 1720 XL</p> <p>Usable Area = Carpet Area* + Terrace / Balcony + Service Area 1277 sq.ft. (119 sq.mt.) = 1125 sq.ft. (104.5 sq.mt.) + 141 sq.ft. (13.13 sq.mt) + 11 sq.ft. (1 sq.mt.)</p>
1087 L	805 sq.ft.	<p>PRODUCT CODE 1087 L</p> <p>Usable Area = Carpet Area* + Terrace / Balcony 805 sq.ft. (74.81 sq.mt.) = 717 sq.ft. (66.65 sq.mt.) + 88 sq.ft. (8.16 sq.mt)</p>
1061 L	788 sq.ft.	<p>PRODUCT CODE 1061 L</p> <p>Usable Area = Carpet Area* + Terrace / Balcony + Service Area 788 sq.ft. (73 sq.mt.) = 717 sq.ft. (66.65 sq.mt.) + 64 sq.ft. (5.91 sq.mt) + 7 sq.ft. (1 sq.mt.)</p>



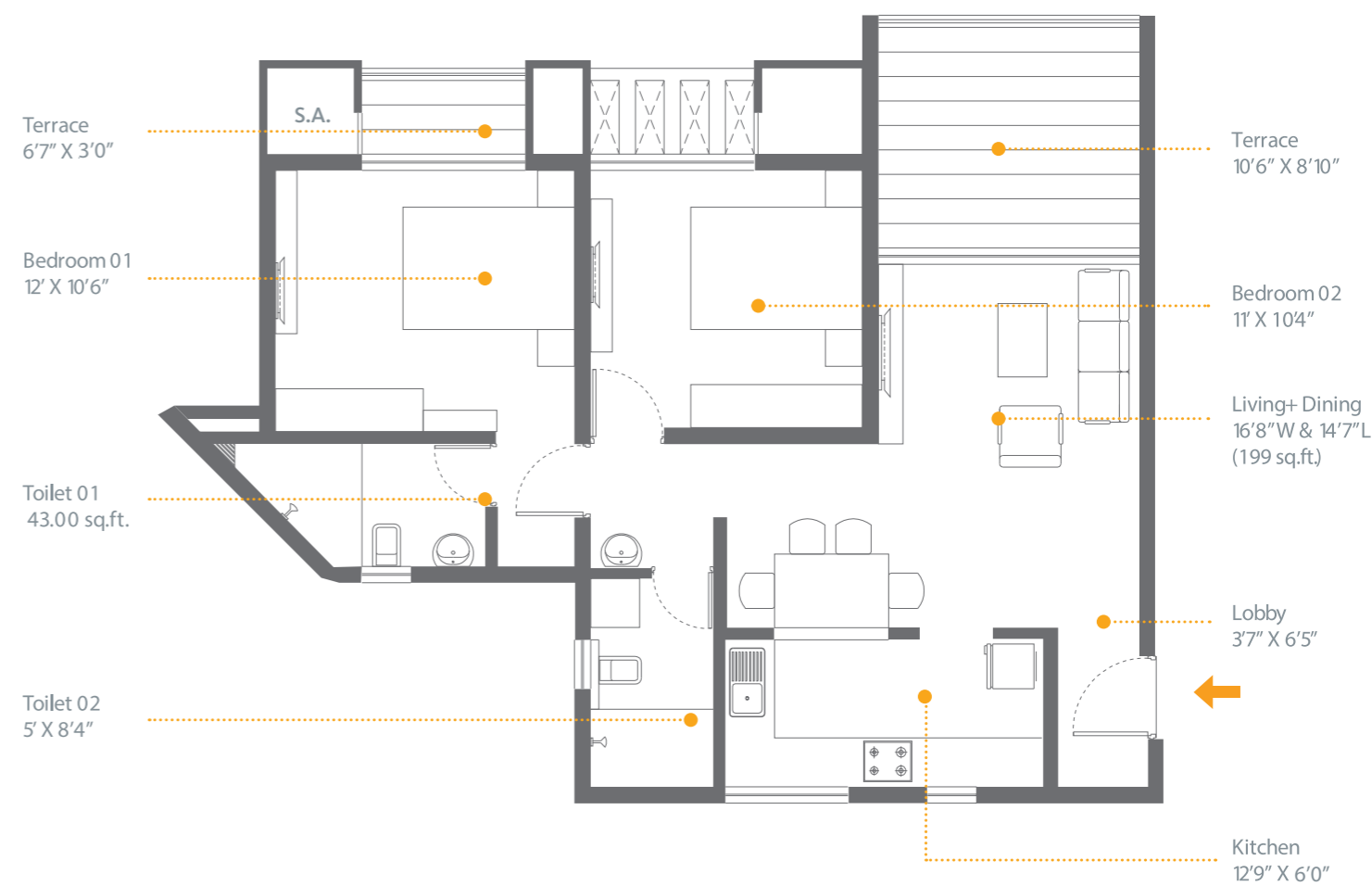
SKYi
MANAS LAKE

tower 02

2 BHK

ODD FLOORS

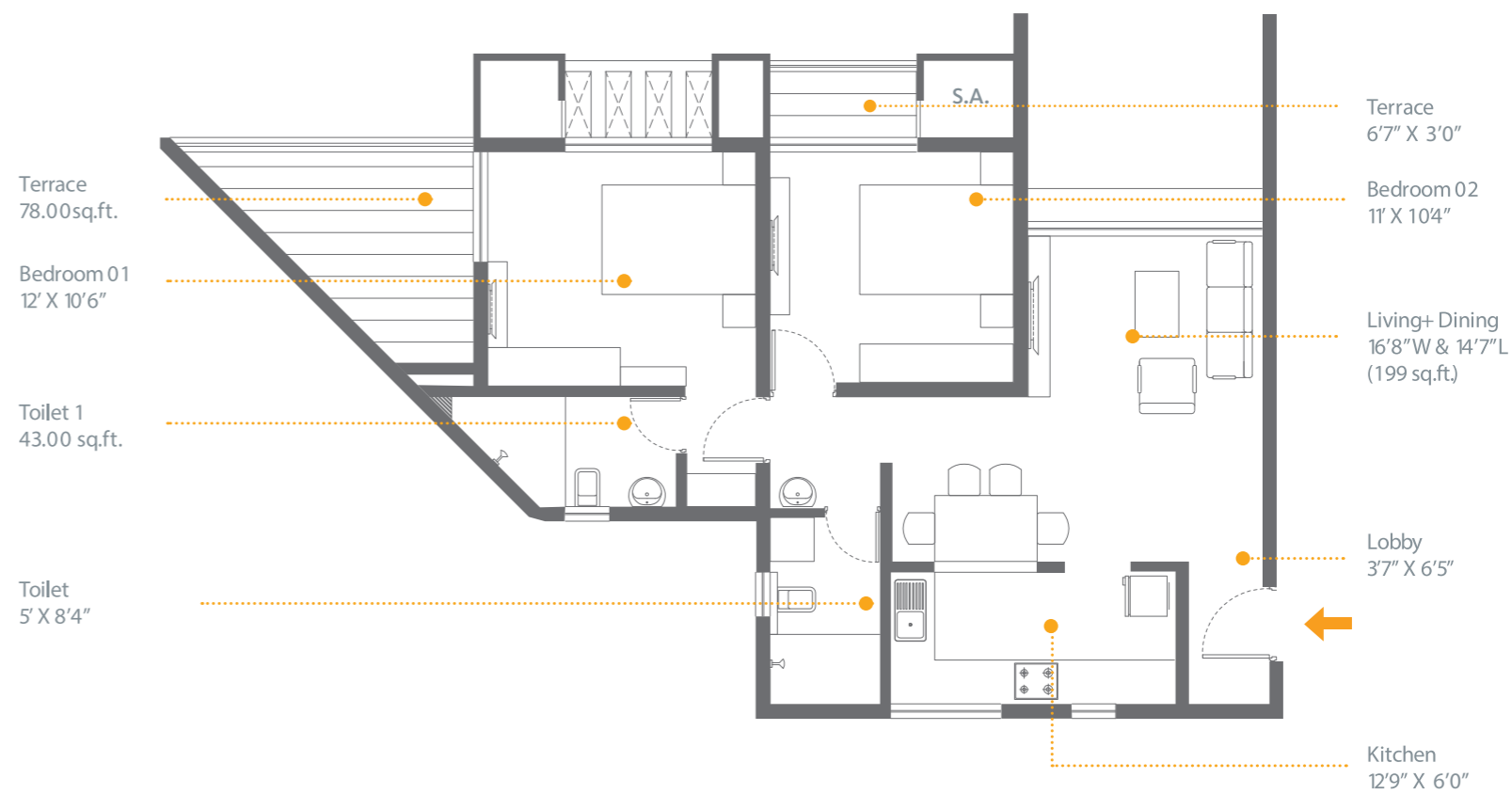
1120 L



2 BHK

EVEN FLOORS

1102 L



Odd Floor Plan

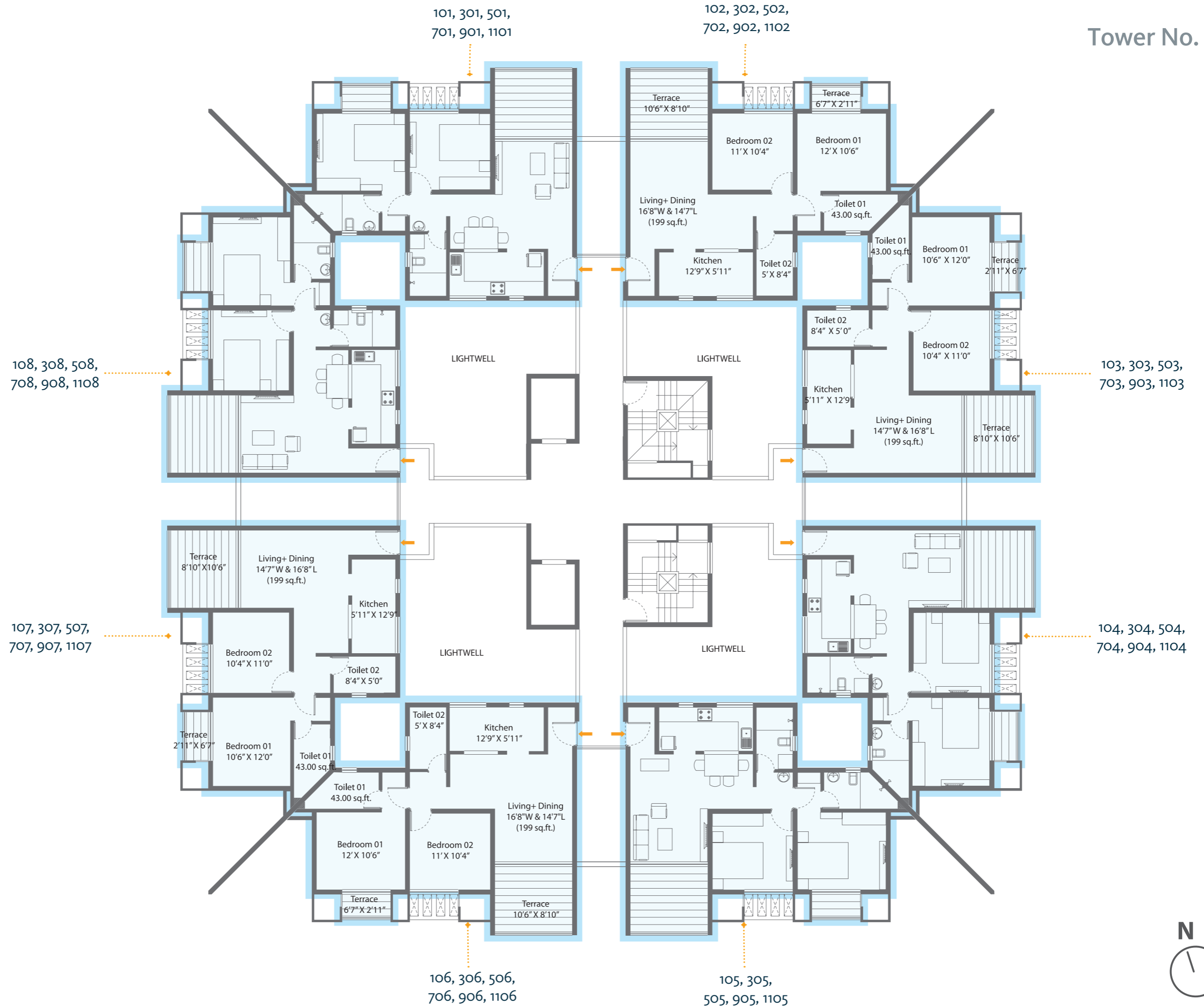
Tower No. 02



2 BHK

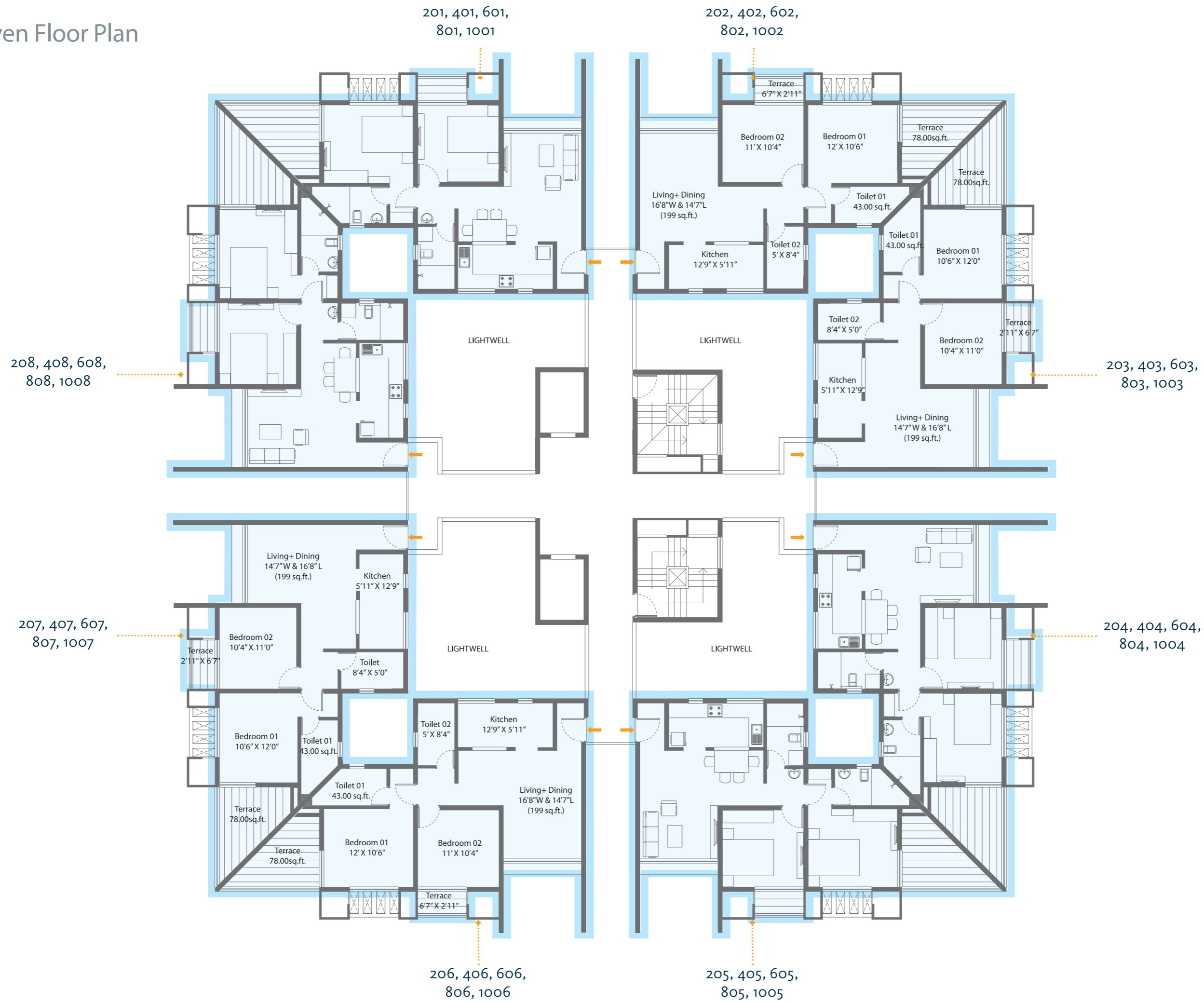
PRODUCT CODE

1120 L



Even Floor Plan

Tower No. 02



2 BHK

PRODUCT CODE

1102 L



Area Statement

PRODUCT CODE	USABLE AREA	
1120 L	833 sq.ft.	PRODUCT CODE 1120 L Usable Area = Carpet Area* + Terrace / Balcony + Service Area 833 sq.ft. (77 sq.mt.) = 708 sq.ft. (65.77 sq.mt.) + 112 sq.ft. (10.44 sq.mt.) + 12 sq.ft. (1 sq.mt.)
1102 L	820 sq.ft.	PRODUCT CODE 1102 L Usable Area = Carpet Area* + Terrace / Balcony + Service Area 820 sq.ft. (76 sq.mt.) = 708 sq.ft. (65.77 sq.mt.) + 97 sq.ft. (9.04 sq.mt.) + 14 sq.ft. (1 sq.mt.)



SKYi
MANAS LAKE

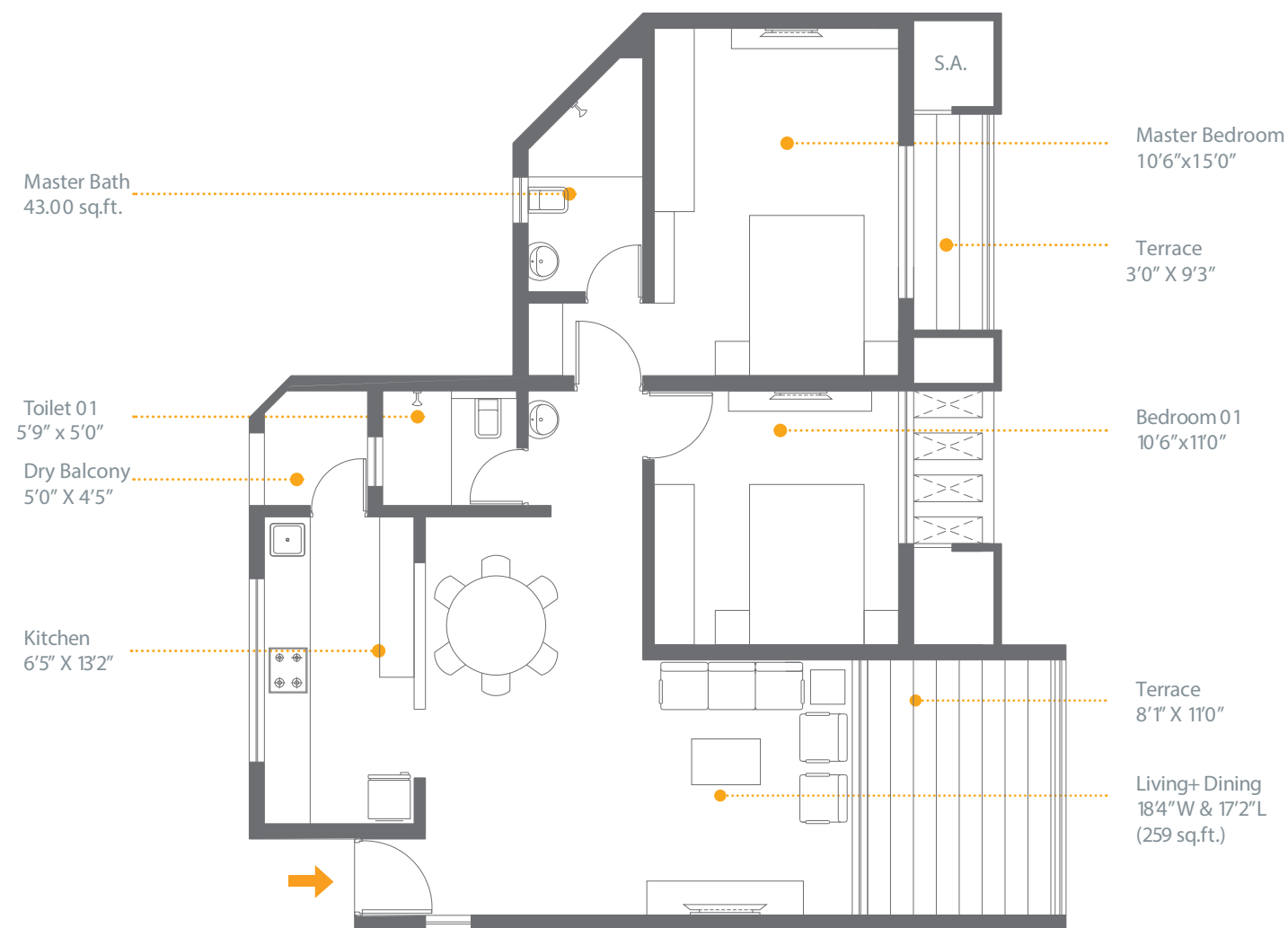
tower 03

Premium 2 bhk & 3 bhk Apartments

2 BHK

ODD FLOORS

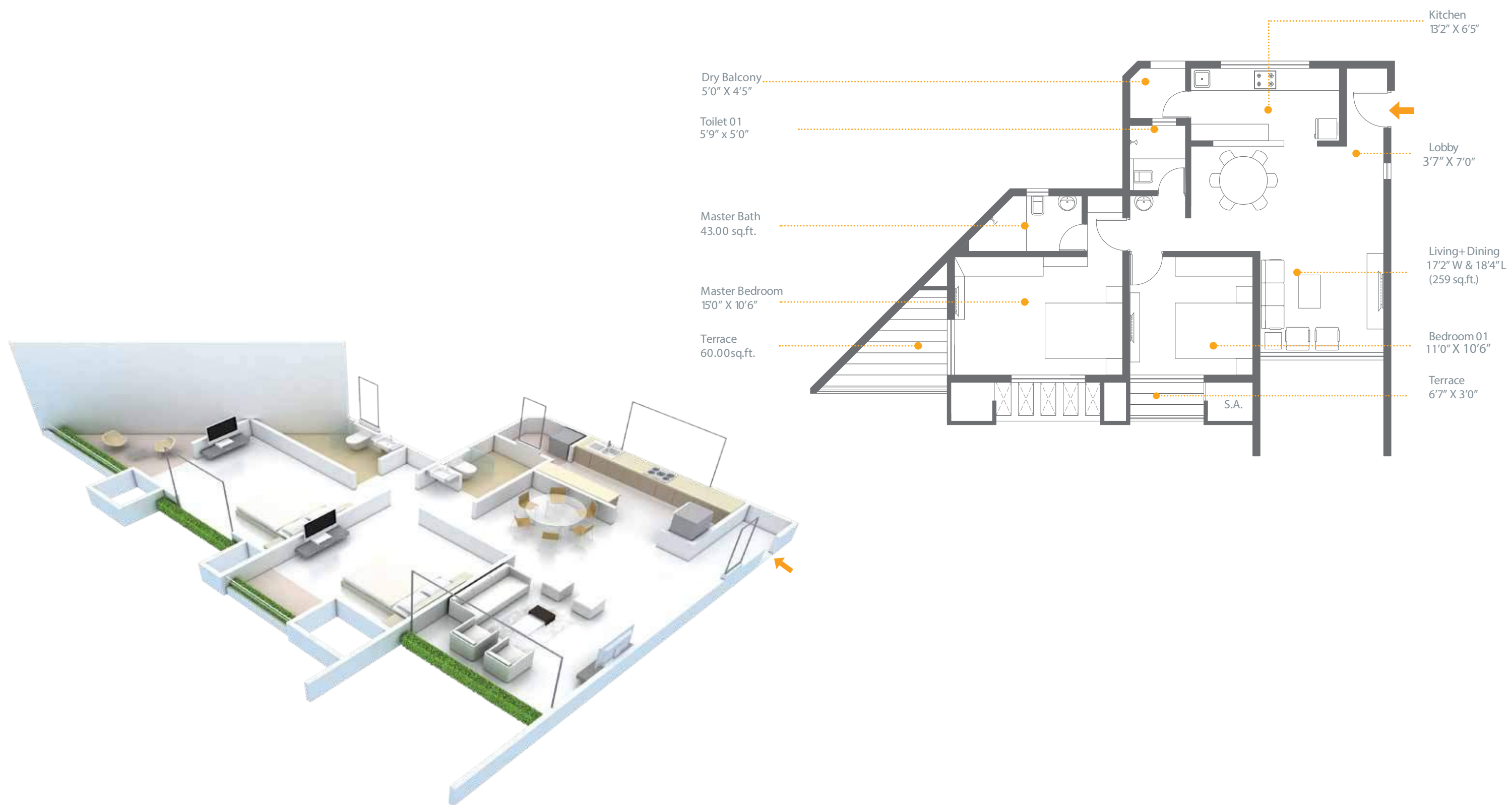
1239 XL



2 BHK

EVEN FLOORS

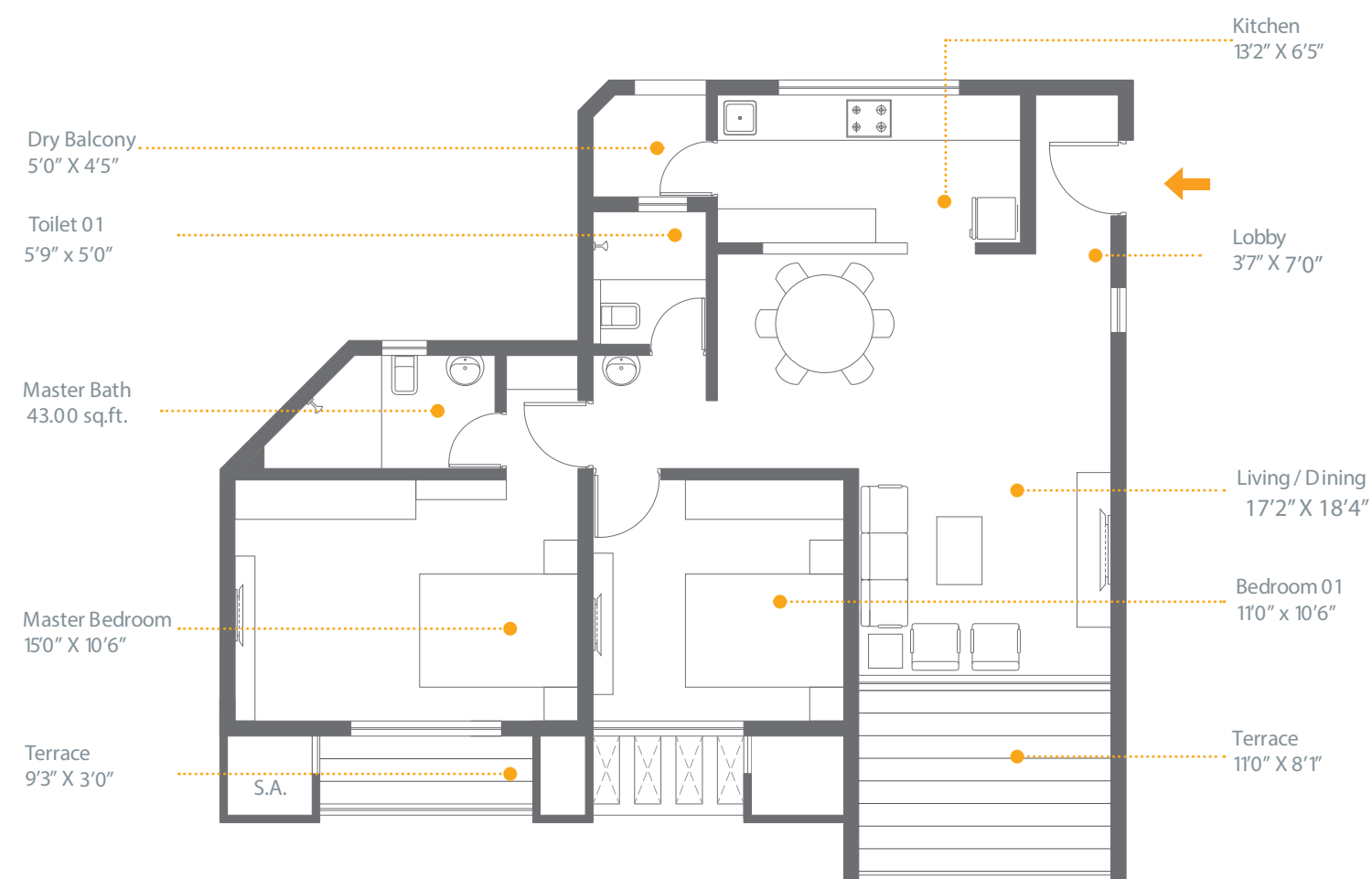
1213 L



2 BHK

ODD FLOORS

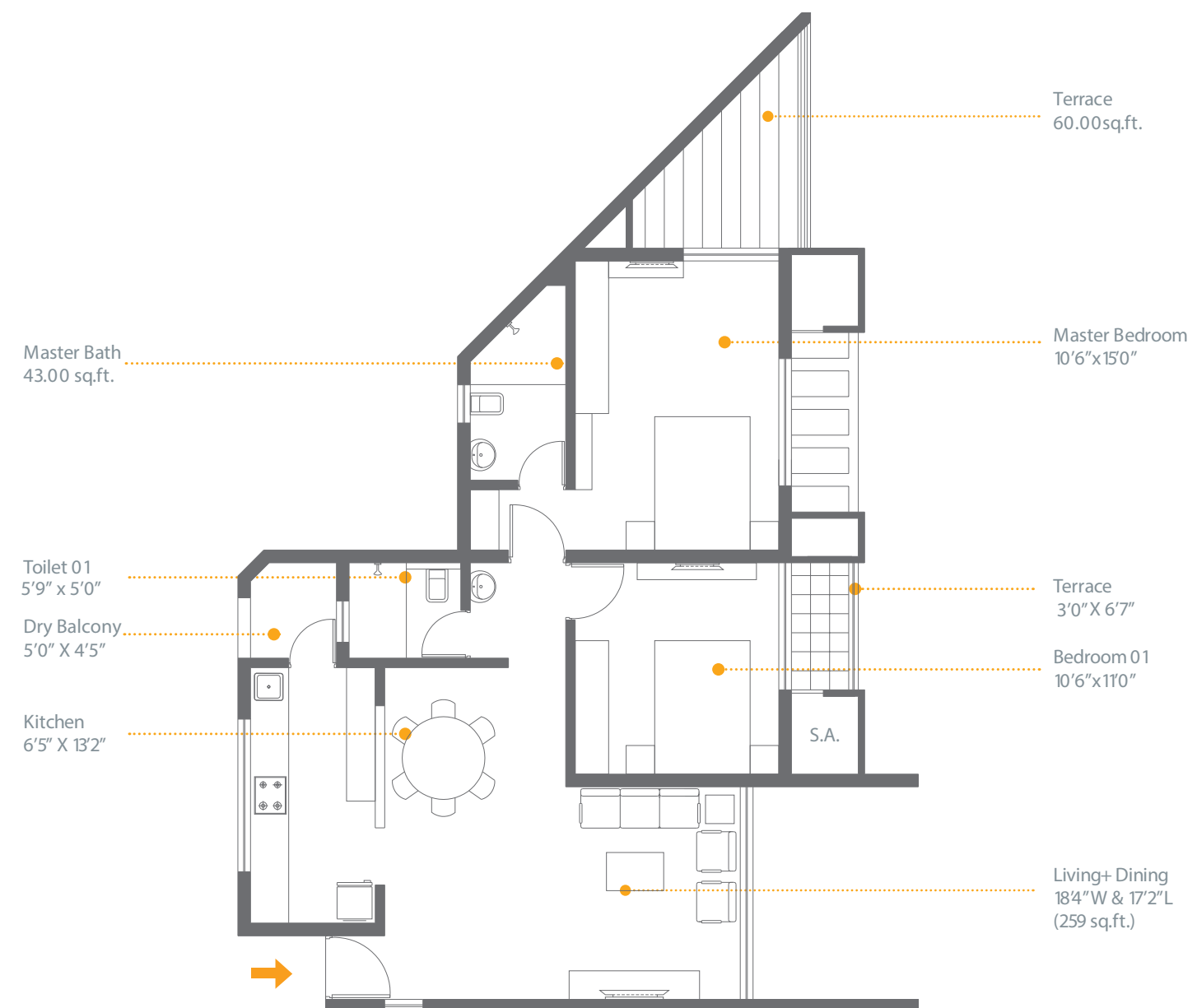
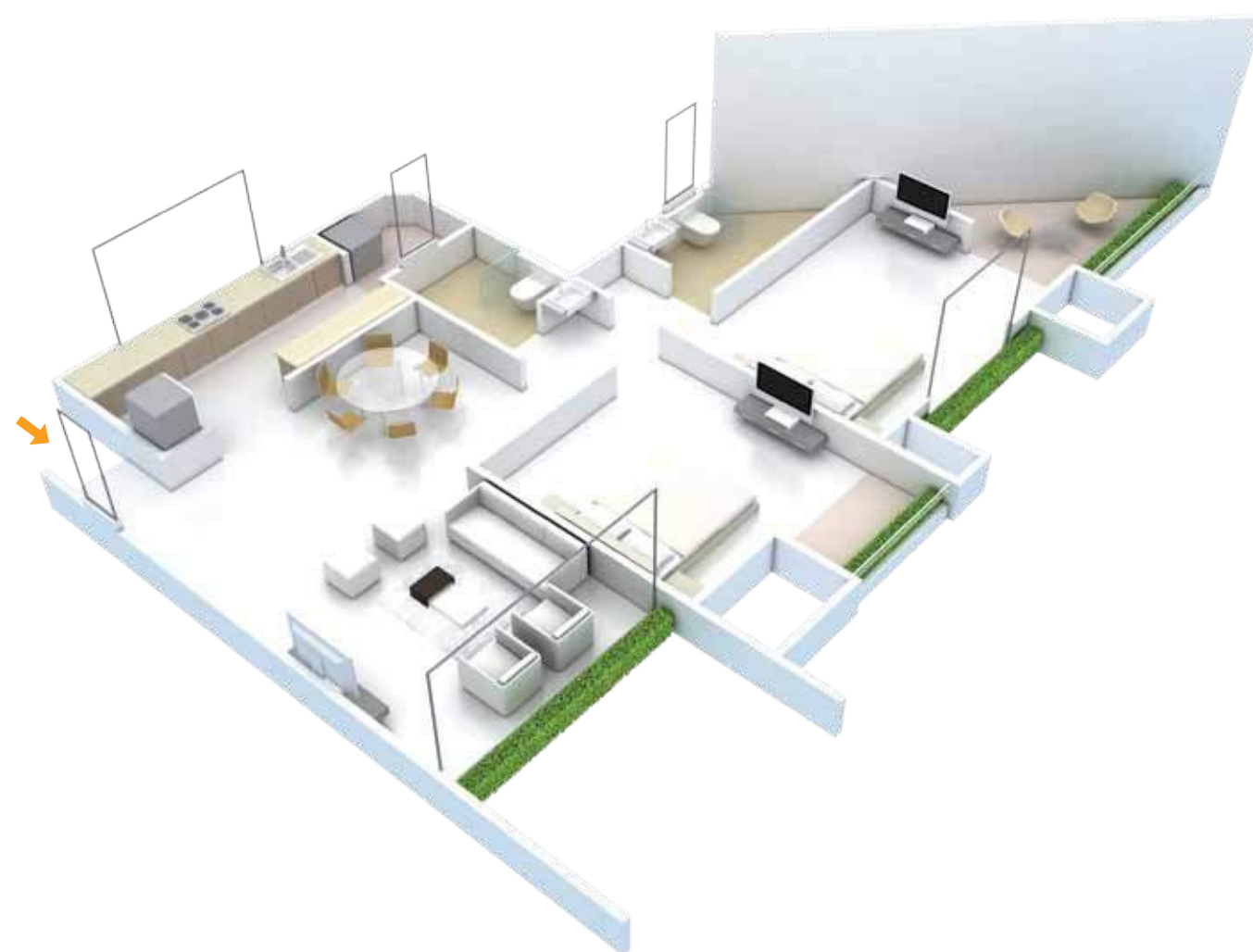
1261 XL



2 BHK


EVEN FLOORS

1190 L



Odd Floor Plan

Tower No. 03



2 BHK
 PRODUCT CODE
1261 XL

108, 308, 508,
708, 908, 1108

101, 301, 501,
701, 901, 1101

102, 302, 502,
702, 902, 1102

103, 303, 503,
703, 903, 1103


2 BHK
 PRODUCT CODE
1239 XL

107, 307, 507,
707, 907, 1107

106, 306, 506,
706, 906, 1106

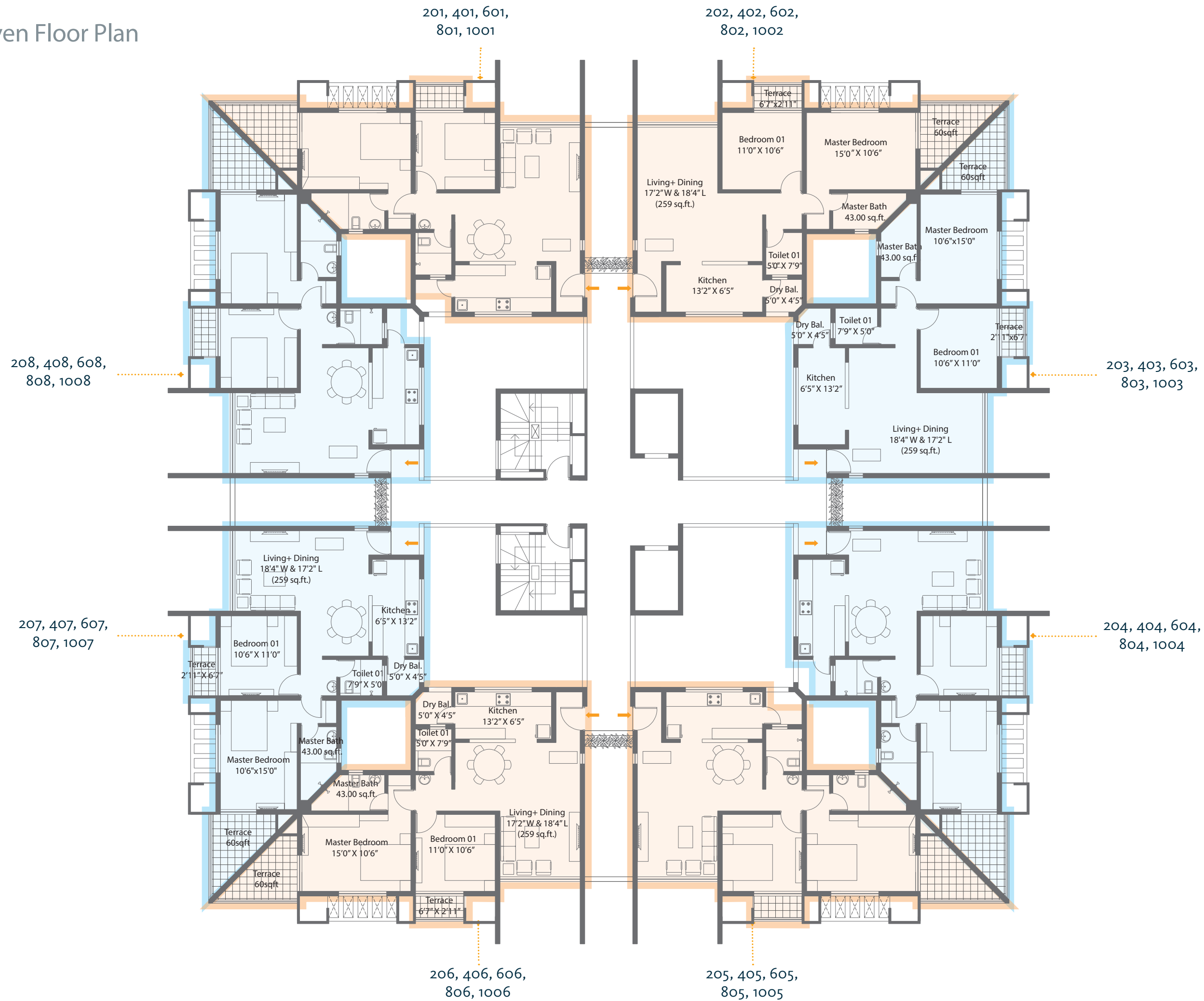
105, 305,
505, 905, 1105

104, 304, 504,
704, 904, 1104



Even Floor Plan

Tower No. 03



2 BHK

PRODUCT CODE

1213 XL

2 BHK

PRODUCT CODE

1190 L



Area Statement

PRODUCT CODE	USABLE AREA	
1261 XL	938 sq.ft.	<p>PRODUCT CODE 1261 XL</p> <p>Usable Area = Carpet Area* + Terrace / Balcony + Service Area 938 sq.ft. (87 sq.mt.) = 809 sq.ft. (75.17 sq.mt.) + 115 sq.ft. (10.73 sq.mt.) + 13 sq.ft. (1 sq.mt.)</p>
1239 XL	921 sq.ft.	<p>PRODUCT CODE 1239 XL</p> <p>Usable Area = Carpet Area* + Terrace / Balcony + Service Area 921 sq.ft. (86 sq.mt.) = 792 sq.ft. (73.59 sq.mt.) + 116 sq.ft. (10.75 sq.mt.) + 13 sq.ft. (1 sq.mt.)</p>
1213 XL	902 sq.ft.	<p>PRODUCT CODE 1213 XL</p> <p>Usable Area = Carpet Area* + Terrace / Balcony + Service Area 902 sq.ft. (84 sq.mt.) = 809 sq.ft. (75.17 sq.mt.) + 79 sq.ft. (7.32 sq.mt.) + 14 sq.ft. (1 sq.mt.)</p>
1190 L	885 sq.ft.	<p>PRODUCT CODE 1190 L</p> <p>Usable Area = Carpet Area* + Terrace / Balcony + Service Area 885 sq.ft. (82 sq.mt.) = 792 sq.ft. (73.59 sq.mt.) + 79 sq.ft. (7.32 sq.mt.) + 14 sq.ft. (1 sq.mt.)</p>

Fact File

LIVING

- Flooring of 2' x 2' vitrified tiles with skirting
- Internal walls with smooth POP finish and high quality semi acrylic paint
- Ceramic tiles for terraces
- TV and telephone points
- Sufficient light points

BEDROOM

- Vitrified tile flooring
- TV point in the master bedroom

KITCHEN

- Granite kitchen platform with stainless steel sink
- 2' x 2' tiles with skirting
- Glazed ceramic tile up to 2 ft. above the platform
- Additional electrical points for appliances
- Washing Machine ready space

BATHROOM

- Neat toilet designs for best space utilisation
- Glazed ceramic tiles upto 7 ft.
- Premium fittings & sanitary ware (Jaquar, Grohe, Cera, Hindware or Equivalent)
- Single lever hot & cold mixer with overhead shower
- Provision for exhaust fan & geyser

SAFETY & SECURITY

- Video door phone
- Firefighting equipment in building
- Seismic resistant design
- CCTV surveillance at entrance lobby of building
- Stretcher Lift in building
- Fire staircase & Refuge area for emergency in building

FEATURES/UTILITIES

- Power backup for 1 LED Tubelight & Fan in each room for each unit
- Power backup for all essential common facilities of building
- Garbage chutes
- Anti-termite treatment for building plinth
- Impressive main entrance & lobbies
- Car parking and separate visitor parking
- Clean Water supply
- Automatic speed elevators with power backup for one
- Concealed copper wiring with branded modular electrical fittings
- Sufficient electrical points
- Powder coated aluminium sliding windows
- Mosquito mesh for windows and sliding doors
- Safety Grill for windows from inside



The Developer

Enerrgia SKYi Venture LLP

Site Office

10 minutes straight drive
from Chandani Chowk
on Paud Road.
Turn left at Manas Resorts.

+91 020 6790 6790

Corporate Office

Shivana, Above Royal
Enfield Showroom,
Bhusari Colony, Paud Road,
Kothrud, Pune - 411 038

Tel: 020 2528 0029



MahaRERA Registration no.
PHASE I (Tower 1,2,3) P521000000449
PHASE II (Tower 4, 5) P52100000513
PHASE III (Tower 8) P52100000514

skyi.com

This Brochure is purely conceptual and not a legal offering. Enerrgia SKYi Ventures LLP reserve the right to add, delete or alter any details and/or specifications in its endeavour to make improvements as and when required. The images, layouts and maps presented in the brochure are indicative purposes only and same are not to the scale. The floor plan shown here is indicative, measurements are prior to application of finishes & same are subject to minor variation. The Actual floor plan of a particular unit could be mirror image of floor plan shown here which may have different orientation, openings & the same is subject to offsets created by structural elements such as elevational/facade features, columns & beams etc. Allottee must check the actual floor plan of the unit he/she is intending to buy and the same is available at project sales office. The furniture/Kitchen/Bathroom layout & accessories shown in the plan are only for the purposes of illustrating/indicating a possible furniture layout & the same is not a part of standard offering. Design, planning, further developments in surroundings areas etc. shown is tentative, subject to modifications on account of any change in plans, permissions and final approval of the respective authorities. All rights reserved. No part of this brochure may be reproduced, stored in a retrieval system, or transmitted, in any form or by any means, electronic, mechanical, photocopying, recording or otherwise, without the prior permission of Enerrgia SKYi Ventures LLP.