

Century ETHOS



Representative image

Presenting North Bengaluru's finest address - Century Ethos, a landmark of contemporary architecture rising tall above prime Hebbal.

With luxurious 3 bed residences and lifestyle experiences inspired by the finest of the world - curated for the most discerning. Inside, lies one of Bengaluru's largest clubhouses at 50,000 sq. ft., replete with entertainment, sports and rejuvenation experiences. Come experience life, just the way you like it.

A chance to appropriate 'Near Ready-To-Move-In' residences, in one of North Bengaluru's most prestigious neighbourhoods.

Large 3 bed residences (2,850 sq. ft. & 2,960 sq. ft.)
Ultra-large 3 bed residences (3,125 sq. ft.)

A development featuring amenities that draw connoisseurs attuned to the fine life – a select, swish set of patrons, for whom lifestyle is but a continuum of the finest cities across the world they have travelled to. Verdant luxurious greens, golf putting zones, a plethora of sports and leisure amenities, pools and party zones, curated spaces for elders, sun-kissed, beautifully-ventilated homes that offer mesmerising cityscape views, as North Bengaluru becomes the next acknowledged hub for international business transit, redefining the urban ecosystem of South India.



Representative image

LOCATION

Located right on NH 44/KIA Main Road, Century Ethos is strategically located at Hebbal in North Bengaluru. Indeed, a location at the cusp of explosive growth and one of the most promising micro-markets in the region. With its quick connectivity to Old Bengaluru and the best destinations for shopping, entertainment, fun and leisure, as also seamless connectivity to the Kempegowda International Airport (KIA), North Bengaluru has emerged as a micro-market that outshines its South and East counterparts.

NEIGHBOURHOOD

A neighbourhood where the elite gather. It is one of the most prestigious emerging neighbourhoods coveted by the elite of the city. Belong to a community of like-minded thinkers and enjoy a distinct lifestyle upgrade in New Bengaluru – yes, the city centre is moving North.



HEBBAL: THE HOTBED OF DEVELOPMENT

The Hebbal-Yelahanka belt is fast emerging as the next new business district of Bengaluru. The proximity and seamless connectivity to Kempegowda International Airport (and thus domestic and international transit) has transformed it into a hotspot for growth and investment opportunities.

- Strategically located halfway from CBD and Kempegowda International Airport (KIA)
- Proximity to Thanisandra and Hennur Main Road – giving access to Northeast Bengaluru's employment hotbeds
- Epicentre of proposed infrastructure – alternate route to KIA, suburban rail and proposed metro
- Well-connected through ORR, railway and road (BMTC) network, 8-lane Bellary road to address enhanced vehicular traffic

AN ADDRESS READY TO HOST YOU.

The social infrastructure around is ready and available, as robust as you'd like it to be. With the best road infrastructure in the city including the already operational 6-lane, 25-km elevated corridor – North Bengaluru has further cemented its position as a preferred destination for discerning patrons. Proximity to leading health and educational institutions, social and leisure avenues is a given.

SOCIAL INFRASTRUCTURE AT THE READY. BECAUSE PRIVILEGE DOESN'T WAIT.



SHOPPING

- | | |
|---|--------------------|
| • Upcoming Phoenix Mall, arguably Bengaluru's largest | 2.1 km / 5 minutes |
| • RMZ Galleria Mall | 3.7 km / 7 minutes |
| • Esteem Mall | 1.8 km / 4 minutes |



EDUCATION

- | | |
|-------------------------------------|---------------------|
| • Vidyashilp Academy | 4.0 km / 10 minutes |
| • Mallya Aditi International School | 5.3 km / 10 minutes |
| • Ryan International School | 8.5 km / 16 minutes |
| • Canadian International School | 9.3 km / 18 minutes |



MEDICAL FACILITIES

- | | |
|--------------------------|--------------------|
| • Prolife Hospital | 0.4 km / 1 minute |
| • Motherhood Hospital | 1.1 km / 3 minutes |
| • Columbia Asia Hospital | 1.7 km / 4 minutes |
| • Aster CMI Hospital | 3.8 km / 8 minutes |



RECREATION

- | | |
|-----------------------|----------------------|
| • Bangalore Golf Club | 9.2 km / 15 minutes |
| • Cubbon Park | 11.3 km / 20 minutes |



BUSINESS PARKS

- | | |
|----------------------------|---------------------|
| • Brigade Magnum Tech Park | 1.0 km / 2 minutes |
| • Brigade Opus | 1.2 km / 3 minutes |
| • Kirloskar Business Park | 1.8 km / 5 minutes |
| • L&T Tech Park | 3.1 km / 6 minutes |
| • Manyata Tech Park | 8.0 km / 15 minutes |



OTHER

- | | |
|------------------------------------|----------------------|
| • RMV Extension | 5.2 km / 12 minutes |
| • Dollars Colony | 5.9 km / 14 minutes |
| • Kempegowda International Airport | 23.0 km / 27 minutes |

CENTURY ETHOS: NORTH BENGALURU'S FINEST EXAMPLE OF LUXURY LIVING

- Strategically located at Hebbal, North Bengaluru
- Superb connectivity to Kempegowda International Airport, CBDs, social and leisure avenues
- Well-planned 'Near-Ready-To-Move-In' 3 bed residences
- 7.3 acres of world-class development, offering unparalleled views of the cityscape and Amruthahalli Lake
- 80% open spaces, to nourish body, mind and soul
- A 50,000 sq. ft. clubhouse with over 40 amenities, judiciously spread indoors as well as outdoors



Artist's impression of the Lake View



LIVE LIFE LARGE.

At Century Ethos, luxury is the foundation for the fine life. It starts with the vision - extending languorously across the 7.3 acres. Here, life plays out, without inhibitions, where every nook is a refreshing zone. From the painstakingly-curated greens that breathe in life within this masterpiece of an urban creation, to the 50,000 sq. ft. luxury clubhouse, to the residences themselves. Soul-soothing spaces where every moment of socializing becomes a cherished memory. Here, you feel at home, the way you've always envisioned your days playing out. Here, like-minded neighbours make for scintillating conversations. Here, you truly belong.

Representative image

TALK-OF-THE-TOWN CLUBHOUSE OUT-OF-THIS-WORLD INDULGENCES.

At an astounding 50,000 sq. ft., connoisseurs do not need to wait to get into these hallowed portals. From an impressive double-height lobby to a nifty café, from a world-class gym to a 20+ seater indoor theatre, squash court to convenience stores – this is the Clubhouse Bengaluru will covet and envy, and a privileged few, enjoy. The clubhouse with modern-day conveniences nestled in a lush green landscape ensures the efficient handling of any kind of event.



Representative image



Artist's impression of the Clubhouse Lobby



PLUSH LOBBY

The grandeur of the double-height entrance lobby, the meticulously-designed interiors and a grand piano to welcome you – a vision that will leave you in awe the first time and every time.



WELL-PLANNED WELLNESS

Rejuvenation, relaxation, meditation or workout. You desire it, you have it. All this at the expansive clubhouse. Every need of yours is taken care of, in a manner that best suits your taste.

- Salon
- Spa/Steam/Sauna/Massage
- Yoga/MMA Studio
- Gym



WHEN WORK BECKONS

In the quest for leisure, we've made sure business doesn't suffer. Whether you like working outdoors, indoors or need a setup to conduct your important meetings, we have made it possible right within the clubhouse premises.

- Indoor and Outdoor Coworking Space
- Business Center
- Discussion Room
- Conference Room



THE CELEBRATIONS NEVER STOP

Be it entertainment, celebrations or get-togethers, find the most stylish way to live the high life. Century Ethos has all the arrangements for the elite to network and mingle with the likes of them within the grand expanse of the clubhouse.

- AV Room
- Pre-function Hall
- Banquet Hall
- Multipurpose Room

LIFE. JUST THE WAY YOU LIKE IT.



Representative image

OUTDOOR AMENITIES



Distinctive Golf Putting Greens

A 5 iron or an 8? The finesse needed, the lengths that you will go to ace the first shot, we understand. Hence, we have put not one but two golf putting greens. Quite understandably, mergers and acquisitions are best kept separate.

Half Basketball Court

We know your love for your Jordans. A half basketball court for you to don them and aim for slam dunks.

Children’s Play Area

Keen eyes, nimble steps and curious minds. What better way for them to learn and grow than being amidst nature in a play area dedicated for children?

Broad Walkway

Walk up to the pier to soak in the beauty of the Amruthahalli Lake that lies just next to Century Ethos. Add meaning to those mornings.

Barbeque Deck

A hot grill and chilled beer. Two things that make any occasion a celebration. Fear not, you don’t have to go far to enjoy these fun moments in life, the barbeque deck overlooking the water features and the oasis pool will liven up your gathering with your friends and loved ones.





Multipurpose Track

Skating, skateboarding, bicycling or jogging – the choice is yours. The multipurpose track runs along the beautiful amenities to provide you with an experience that makes doing your daily pastime even more worthwhile.

Senior Citizen's Avenue with Fish Pond and Reflexology Garden

For those who held our hands and taught us to walk, dedicated senior citizens' avenue with a serene fish pond and a beautiful reflexology garden to soothe the senses.

Outdoor Fitness Station

The strive to be fitter than you were yesterday. The goal of a healthier you. Be rewarded for your efforts to stay healthy with a quick workout outdoors, should you feel like.

Aroma Garden

An aroma garden for those everlasting fragrances. Life is blissful here.

Amphitheaters

What is life without a little drama! Two amphitheaters for twice the entertainment.



INDOOR AMENITIES



Coworking Space and Business Centre with Concierge Desk

Thoughtfully-designed business centres along with conference rooms and coworking spaces to host meetings close to your home. With, of course, the assistance of a concierge service.

Banquet Hall with Pre-function Area/Party Lawn

The camaraderie of the city's finest deserves to be celebrated in spaces that reflect your larger-than-life style. A 100-seater banquet hall with pre-function area and a party lawn adjacent to the grand swimming pool to host extravagant soirees that will leave your guests awestruck.

Salon

Special occasions or a business meet demands that you look your absolute best. A quick visit to the salon is all it takes.

Gym with Aerobics/Yoga Studio

A well-appointed indoor gym with aerobics/yoga studio to help you excel in your drive for a healthier lifestyle.

Spa/Steam/Sauna/Massage

Whether it's the need to unwind after a busy day, or that innate desire to be pampered, welcome to an oasis of rejuvenating massages and wellness therapies.





Artist's impression of the Indoor Swimming Pool

Swimming Pool

A huge oasis pool designed to soak those worries away, surrounded by a green forest cluster to give you the privacy you deserve. Take a relaxing swim, laze around the stylishly designed pool deck, play with your kids in the nearby kid's pool or enjoy in the indoor heated swimming pool. Enjoy the luxury of choice.

Crèche

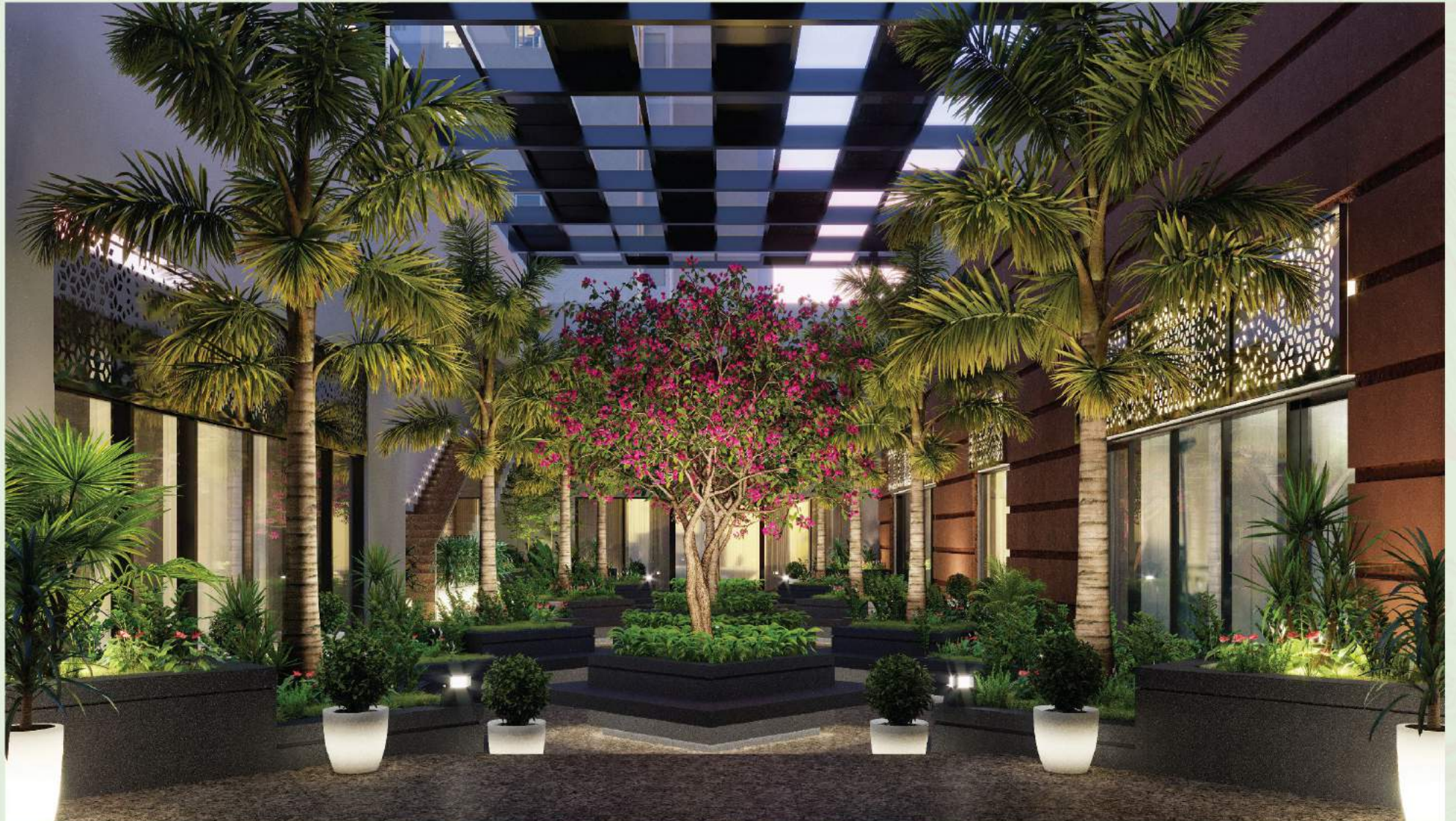
For all those moments when work or commitments keep you away from your little ones, rest assured of the best care and learning with all the fun.

Multipurpose Sports Court

A rooftop multipurpose sports court. Now you can enjoy playing while having an astounding view of the amenities.

Open-to-sky Courtyard

Perfectly lit for you to enjoy the mid-day tea while reading your favourite literature.



Artist's impression of the Open-to-sky Courtyard



Squash Court

If a friendly face-off is your idea to jam with like-minded neighbours, a game of squash is just what you need. The squash court serves as the perfect arena for you to unwind and discuss all things that interest you.

Indoor Games with Video Games Arena

From a video game arena to a pool table. From table tennis to carrom to cards room. The indoor games room is loaded with fun.

AV Room

Screen your favourite movies, shows or indulge in a soccer match with your loved ones in the thoughtfully-designed AV room.

Café. Convenience Store. Laundry. All at one place.

While you enjoy a quick bite at the swanky café, get your laundry and groceries done at one place. Curated retail spaces for both your basic necessities and few indulgences. Whatever you want, is available right where you are.

Drivers' Lounge

The driver's lounge makes sure you have quick access to your drivers whenever you want to be on the move. Plus a quiet resting zone for them.

LARGE-HEARTED 3 BED RESIDENCES. FOR LIFE. FOR A LIFETIME.

The luxury of space is synonymous with every unit. A keen eye for detail makes the rooms look even more spacious than they actually are.

- Thoughtfully designed, with 6 residences to a core, with no common walls, ensuring maximum privacy
- Overlooking the skyline of Sahakar Nagar and the serene Amruthahalli Lake
- Ultra-spacious living room of close to 660 sq. ft. including thoughtfully-separated formal, dining and family living zones
- A master bedroom with almost 200 sq. ft. area and an attached balcony - splendid views and spacious living



Representative image

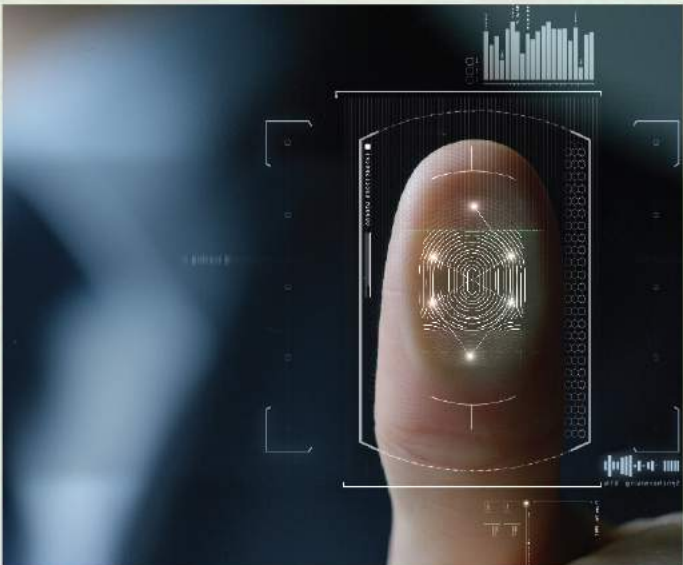


THOUGHT-THROUGH LIVING

- Flat slab structure without beams
- Floor-to-floor height of 3.3 metres
- Floor to ceiling full-length windows
- Double basement parking
- Whisper-soft high-speed elevators
- Flooring: Imported marble for living, dining and foyer, wooden flooring with premium imported laminate for bedrooms

SAFE LIVING

- Biometric main door lock
- Videophone and intercom facility
- Centralized gas supply
- Gas leak detector in the kitchen
- Occupancy sensors for the toilets
- Panic button strategically located inside the house



Representative images

PROJECT SPECIFICATIONS

FLOORING FINISHES

Living / Dining, Foyer	Imported Marble
Bedrooms	Laminated Wooden Flooring
Kitchen, Utility, Balcony, Servant Room	Vitrified Tiles
Toilets	Designer Ceramic Tiles

PAINTING

Interior Walls & Ceilings	Acrylic Emulsion Paint
Exterior Walls	Weather Proof Texture Paint
Kitchen / Utility	Washable Emulsion Paint

DOORS

Entrance Door	Frame - Engineered Wood - LVL with PU - Lacquer Polish Finish
Internal Doors	Frame - Engineered Wood - LVL with PVC Laminate Finish Shutter - Solid Perlite Inner Core with HDF PVC Laminate Finish
Toilet Doors	Frame - Engineered Wood - LVL with PVC Laminate Finish Shutter - Solid Perlite Inner Core with HDF PVC Laminate Finish
Balcony	Anodised Aluminum Sliding Doors with HS Glass & Provision for Mosquito Mesh

DADO WORK

Toilets	Designer Ceramic Tiles
---------	------------------------

BATHROOMS

Sanitary Ware	Kohler or Equivalent
Faucets	Kohler or Equivalent
Shower Cubicles	All Toilets
Exhaust Fan	All Toilets

SMART HOME FEATURES

• Biometric Main Door Lock	Camera at main door with indoor panel and intercom
• Videophone and Intercom Facility	Yale / Samsung or Equivalent
• Centralized Gas Supply	Kitchen
• Gas Leak Detector	Kitchen
• Occupancy Sensors	All Toilets
• Panic Button	Located at a strategic point inside the house apartment lobby
• CCTV	24 hour surveillance at all strategic locations

RAILINGS

Balcony	Anodised Aluminium Railing with laminated glass panels
---------	--

WINDOWS AND VENTILATORS

Windows & Ventilators	Anodised Aluminum Sliding Window with Glass & provision for Mosquito Mesh
-----------------------	---

ELECTRICAL WORKS

Switches	Modular Switches – Schneider or Equivalent
Telephone & TV Point	Living / Dining, Bedrooms
Air Conditioners	Living / Dining, Bedrooms
Power Supply	10KW – 3 BHK and 12 KW – 4 BHK
Power Backup	5KW – 3 BHK and 6 KW – 4 BHK

DEVELOPMENT PLAN



LEGEND

- | | | |
|--------------------------|--------------------------------------|-----------------------------|
| 1. Half Basketball Court | 6. Lake View Pier/Elevated Boardwalk | 11. Outdoor Fitness Station |
| 2. Golf Putting Green | 7. Senior Citizen's Avenue | 12. Amphitheater |
| 3. Childrens' Play Area | 8. Fish Pond | 13. Tropical Shrub Garden |
| 4. Party Lawn | 9. Jogging Track | 14. Reflexology Garden |
| 5. Barbeque Deck | 10. Bicycle Track | 15. Skating Rink |

BRONZE

CHROME

Club House

ARGON

XENON

National Highway 44



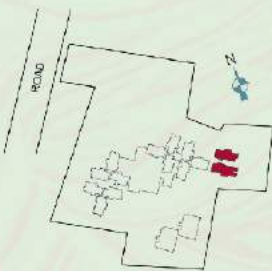
ARGON TYPICAL FLOOR



BRONZE TYPICAL FLOOR



CHROME TYPICAL FLOOR

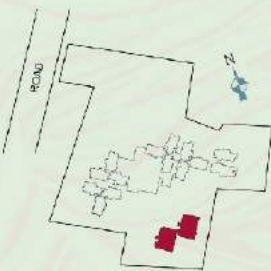


UNIT 102 - 2102
SBA: 3485 Sq. Ft.
(323.77 Sq. Mts)



UNIT 001 - 2101
SBA: 4235 Sq. Ft.
(393.44 Sq. Mts)

XENON TYPICAL FLOOR



UNIT: B - 01 Series
SBA : 4235 Sq. Ft.
(393.44 Sq. Mts)



UNIT: A - 02 Series
SBA : 4235 Sq. Ft.
(393.44 Sq. Mts)



UNIT: B - 02 Series
SBA : 4235 Sq. Ft.
(393.44 Sq. Mts)

UNIT: A - 01 Series
SBA : 4235 Sq. Ft.
(393.44 Sq. Mts)



Century Ethos - Argon - Unit Plan
(Unit 003-1903 - SBA: 2850 Sq.Ft.)



- 1. Foyer 6'7" x 7'6"
- 2. Formal Living 14'1" x 17'7"
- 3. Dining/Family Living 18'4" x 19'8"
- 4. Kitchen 8'6" x 13'5"
- 5. Utility 7' 10" x 6'0"
- 6. Bedroom 01: 14'5" x 13'5"
- 7. Bedroom 02: 14'6" x 12'0"
- 8. Master Bedroom 14'5" x 13' 1"
- 9. M.Toilet 10'2" x 7'10"
- 10. Dress 10'10" x 4'11"
- 11. Toilet 01: 8'6" x 5'11"
- 12. Balcony 15'5" x 5'11"
- 13. Balcony 5' 1" x 10'2"
- 14. Powder Room 5'2" x 4'11"
- 15. Toilet 02: 8'1" x 6'5"
- 16. Maid's Room 5'7" x 6'1"
- 17. Maid's Toilet 4'1" x 3'7"

Century Ethos - Argon - Unit Plan (Unit 002-1902 - SBA: 3125 Sq.Ft.)



1. Foyer 7'7" x 7'3"
2. Formal Living 18'10" x 17'1"
3. Dining/Family Living 18'3" x 21'10"
4. Kitchen 14'1" x 14'11"
5. Utility 4'7" x 8'6"
6. Bedroom 01: 12'0" x 14'10"
7. Bedroom 02: 13'3" x 13'9"
8. Master Bedroom 14'9" x 13'4"
9. M.Toilet 10'2" x 8'0"
10. Dress 10'2" x 6'5"
11. Toilet 01: 8'11" x 5'11"
12. Balcony 18'1" x 5'11"
13. Balcony 5'1" x 11'10"
14. Powder Room 4'1" x 5'11"
15. Toilet 02: 5'10" x 8'6"
16. Maid's Room 7'9" x 6'3"
17. Maid's Toilet 4'11" x 4'1"

CENTURY REAL ESTATE

A legacy of 4 decades - harnessing the past, defining the present and creating the blueprint for the future.

- One of the most respected and trustworthy names in the Indian real estate industry
- Over 3,000 acres of land bank, with massive development potential
- Over 20 mn. sq. ft. of quality residential and commercial assets under construction
- Multiple executed partnerships across quality housing and commercial spaces for thousands of Bengaluru residential, over the last 4 decades

This document is purely conceptual and is by no means a legal offering. The promoters reserve the right to change, delete or modify any specifications and plans mentioned herein.

Century Real Estate Holdings Pvt. Ltd.
Century Sales Galleria, Opposite Sahakar Nagar Cross,
Bellary Road, Bengaluru-560 092, India.
T. (+91) 80 4433 4444 | www.centuryrealestate.in

