



A J W A N I G R O U P

W A K A D

LEGACY OF TRUST

By

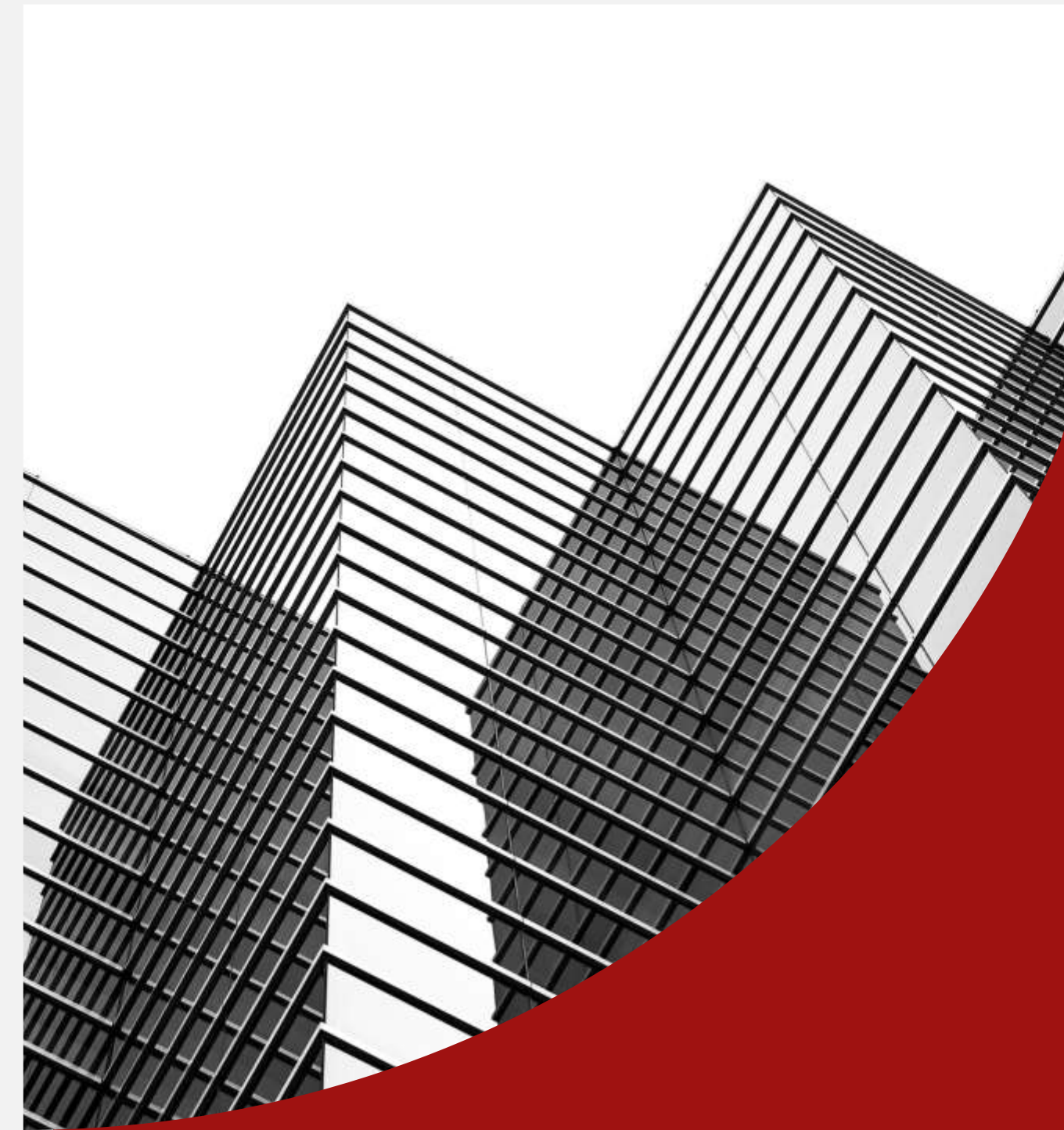
Ajwani Infrastructure Pvt. Ltd

Ajwani Group

About Us

AIPL was founded by Shri G. H. Ajwani in Pune as a proprietor firm in 1975 and converted into a Private Limited Company in 1986. In his illustrious career spanning over half a century, he started with Road Construction and completed the journey by expansion into other specialized fields like Institutional Buildings; Mass Housing and Marine Projects.

In recognition of his immense contribution and service to the society, dynamic leadership and visionary qualities coupled with a principled lifestyle, he was conferred the Life Time Achievement Award by the Builders Association of India in the year 2017.





With a legacy of over 35 years, Ajwani Group stands as a symbol of integrity, innovation, and excellence in Maharashtra's infrastructure and real estate landscape. What began as a mission to transform Maharashtra's core infrastructure, through roads, highways, marine works, and mass housing, has today evolved into a visionary real estate brand delivering ultra-luxury developments with an architectural soul. Driven by values, not trends, our every project reflects a rare blend of technical precision and human emotion. From engineering feats to elegant homes, we infuse our projects with enduring quality and timeless design thinking.

2500+

Projects Completed
across infrastructure
and real estate

35+

Years of Excellence in
delivering impactful
developments

1200+

Trusted Vendor
Partners strengthening
our supply chain





1200+
Completed
PROJECTS

EXPERIENCE
THAT DELIVERS,
PROJECTS
THAT INSPIRE



40+
Years
OF EXCELLENCE

EXCELLENCE
THAT STANDS
THE TEST OF TIME





LEGACY OF TRUST



WHERE THE CITY *meets*
SERENITY
#UnveilingSoon



BEYOND THE *ordinary*, WITHIN
WAKAD



#UnveilingSoon

The *pulse* of
CONNECTIVITY
#UnveilingSoon





AJWANI

GROUP

Legacy of Trust

CONNECTING GEOGRAPHIES
SOME OF THE
WITH VALUE ENGINEERING

Completed Key Projects



Roads, Highways

Ajwani Infrastructure specialises in high quality, durable Roads.



Buildings & Mass Housings

Ajwani Infrastructure has constructed various institutional buildings and mass housing projects.



Marine Structures

In 2017, we expanded into the construction of infrastructure facilities for Marine and Port projects.

CLIENTS

Over the years, we have delivered quality infrastructure services to several prestigious clients.



Financial Performance



Major Works in hand (As on December 2024)

Sr. No.	Client	Name Of Work	Contract Amount with GST (in Cr)
1	PWD	EPC 24 - Improvement to Pusesavali Vangi Nagthane Walwa Borgaon Bahe Tambave Kasegaon Wategaon Takave Road, Reconstruction, Widening and Strengthening of existing carriageway in the section of SH-158 from Km70/000 to 112/620 (Length 42.620 Km.) to two lanes with paved shoulders standards in Tal. Walwa Dist. Sangli, Maharashtra	273.76
2	MMRDA	Widening and Construction of MIDC Road from Taloja MIDC Road to Ambernath - Katai Naka Road PHASE II	256.06
3	PWD(HUDCO)	EPC 56 - Improvements Junnar Hapusbag Yedgaon to 14 Number Road Km 44/00 to 61/00 , MDR 1 and NH-50 Salwadi Bori Belha Road MDR 8, Km 0/00 to 4/500 and Bhorwadi to Nimagaon sava Jambut Road MDR 9, Km 0/00 to 17/00 Tal Junnar Dist. Pune.	249.92
4	MIDC	Dombivli Industrial Area.... Reconstruction of existing UCR Nallas with RCC Nallas and providing RCC Storm Water Drains at MIDC Industrial & Residential Zone.	221.91
5	MSIDC	EPC PN-II (13C) - Improvement to Dicholi Navaja Helvak Morgiri Sajur Tambave Ving Vathar Rethare Shenoli Station Road SH-148 Km. 62/500 to 101/000 (Part- Patan Taluka Border to Shenoli Station) Tal. Karad Dist. Satara on EPC mode.	213.52
6	MIDC	Dighi Port Industrial Area (DPIA) Providing approach road to DPIA road from Jackwell to WTP, road from Pahur phata to Pahur.	179.33
7	CIDCO	Integrated Infrastructure development of 30M., 27M. and 20M. wide roads in TPS 4 under NAINA Project.	174.46
8	CIDCO	Integrated Infrastructure development of 27M wide roads in TPS 3 under NAINA Project.	145.92
9	MIDC	TTC Industrial Area... Roads.. Improvement to infrastructure facilities... Construction of balance road with RCC built-up gutter, streetlights and allied works in 'A', 'EL', 'R', 'C' and 'K' Block	127.09
10	PWD	EPC 13 - Improvements of SH-149 Road from SH 117 to Adarki Mirgaon Phaltan Road, Reconstruction, Widening and Strengthening of existing carriageway in the section of SH-149 from Km 0/000 to 21/000 (Length-21 Km) to two lanes with paved shoulders standards in Tal. Phaltan Dist. Satara, Maharashtra on EPC mode	115.13
11	MIDC	Chakan Industrial Area Phase-IV... Construction of 6 lane existing road using cement concrete treatment with footpath and storm water pipeline repairing and providing new curbing at center verge and road furniture's.	75.90
		Total	2033.00



Residential

- Yashwin Supernova (200M)
- Vision Ace (1KM)
- Akshar Elementa (2.2KM)
- Palladio apartments (2KM)
- Blue ridge (5KM)

Shopping Avenues

- Phoenix Mall
- One vision mall
- Xion mall
- Dmart
- Decathlon
- Grand High street



Business

- Hinjewadi IT Park (5.5 KM)
- EON Park (1KM)
- World Trade Centre (1.5KM)
- Panchshil IT park (3.3 KM)

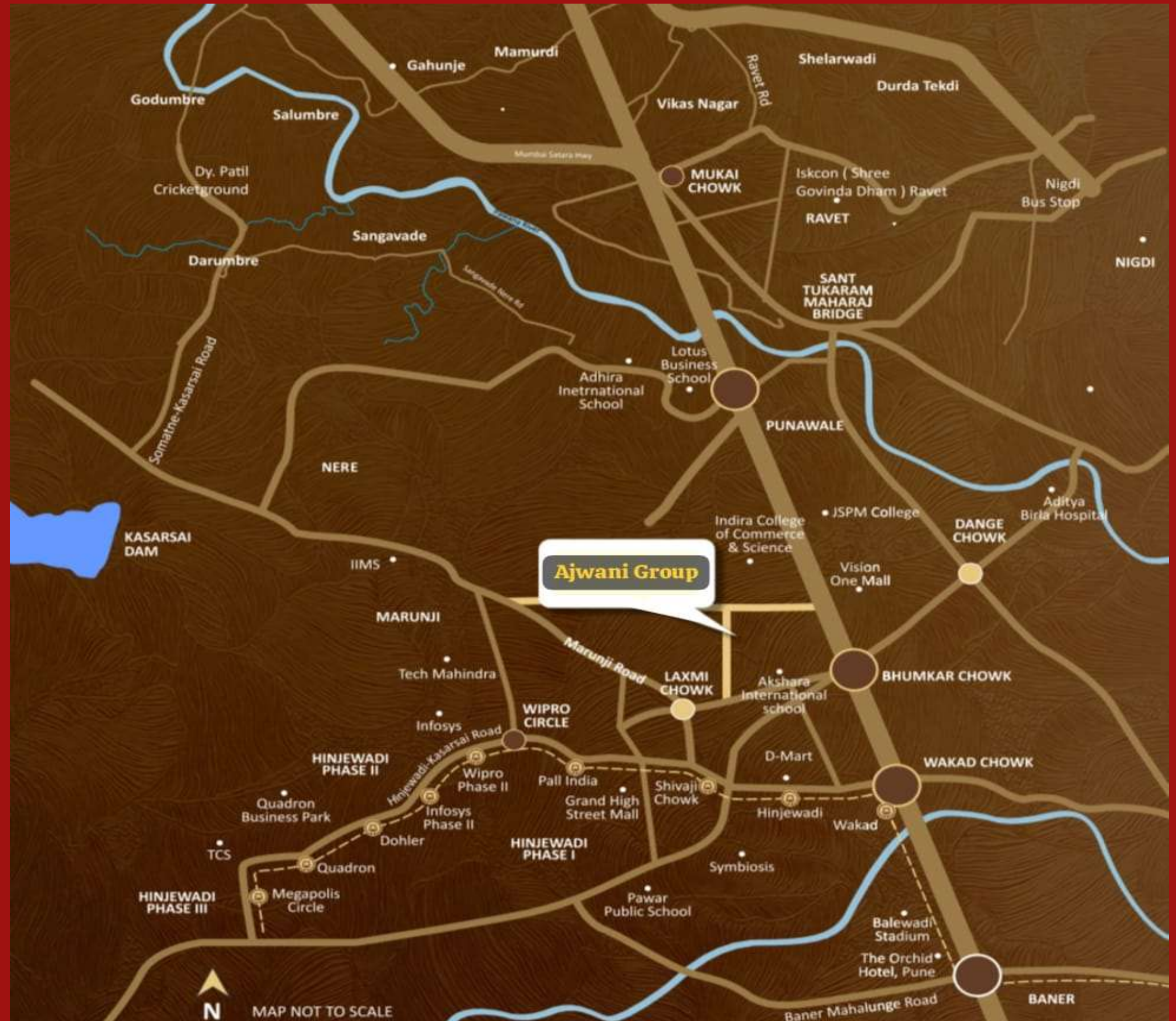
Education

- Indira College (700 M)
- Akshara School(700M)
- Poddar School (1.3 KM)
- DY Patil Institute of Hotel Management (1.2 KM)
- IBMR College (1.3 KM)



HealthCare

- Lifepoint Hospital (2KM)
- Golden Care (1.8 KM)
- Surya mother & child (3 KM)
- Anand Memorial (4.2 KM)
- Aditya Birla (4.7 KM)





3.5-Acres Landmark Development

3 Iconic Residential Towers

1 Premium Commercial Tower

Smartly-Planned Units

Culture-Inspired Architectural Design

Serene and Sustainable Environment

40+ Lifestyle-Focused Amenities

Master Plan



2BHK	SQFT
RERA CARPET AREA	865 SQ.FT

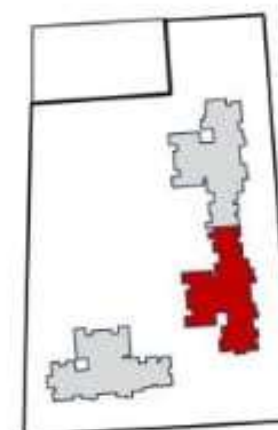
2BHK	SQFT
RERA CARPET AREA	865 SQ.FT

3BHK	SQFT
RERA CARPET AREA	1177.15 SQ.FT

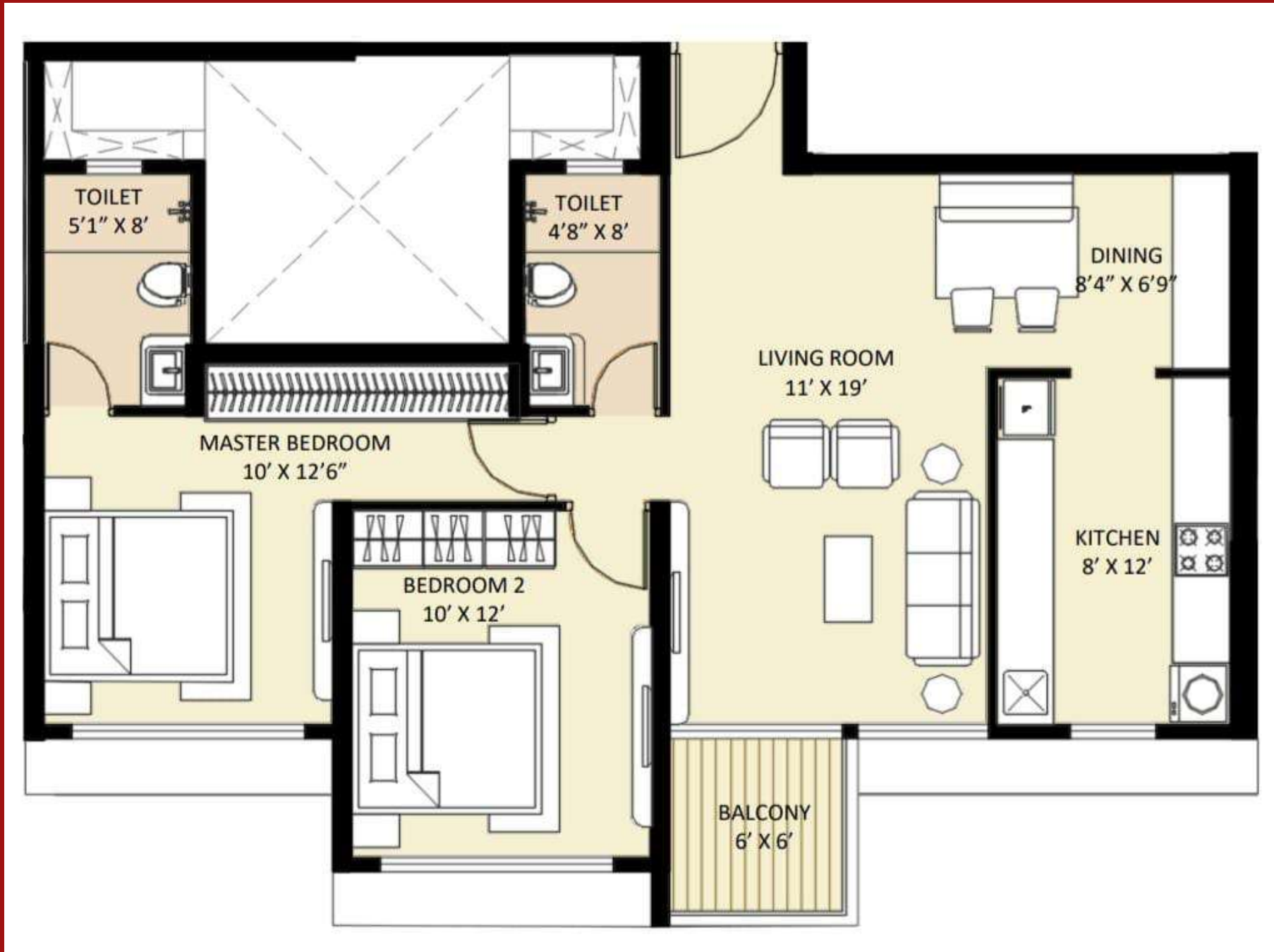
3BHK	SQFT
RERA CARPET AREA	1146.04 SQ.FT

2BHK	SQFT
RERA CARPET AREA	812.57 SQ.FT

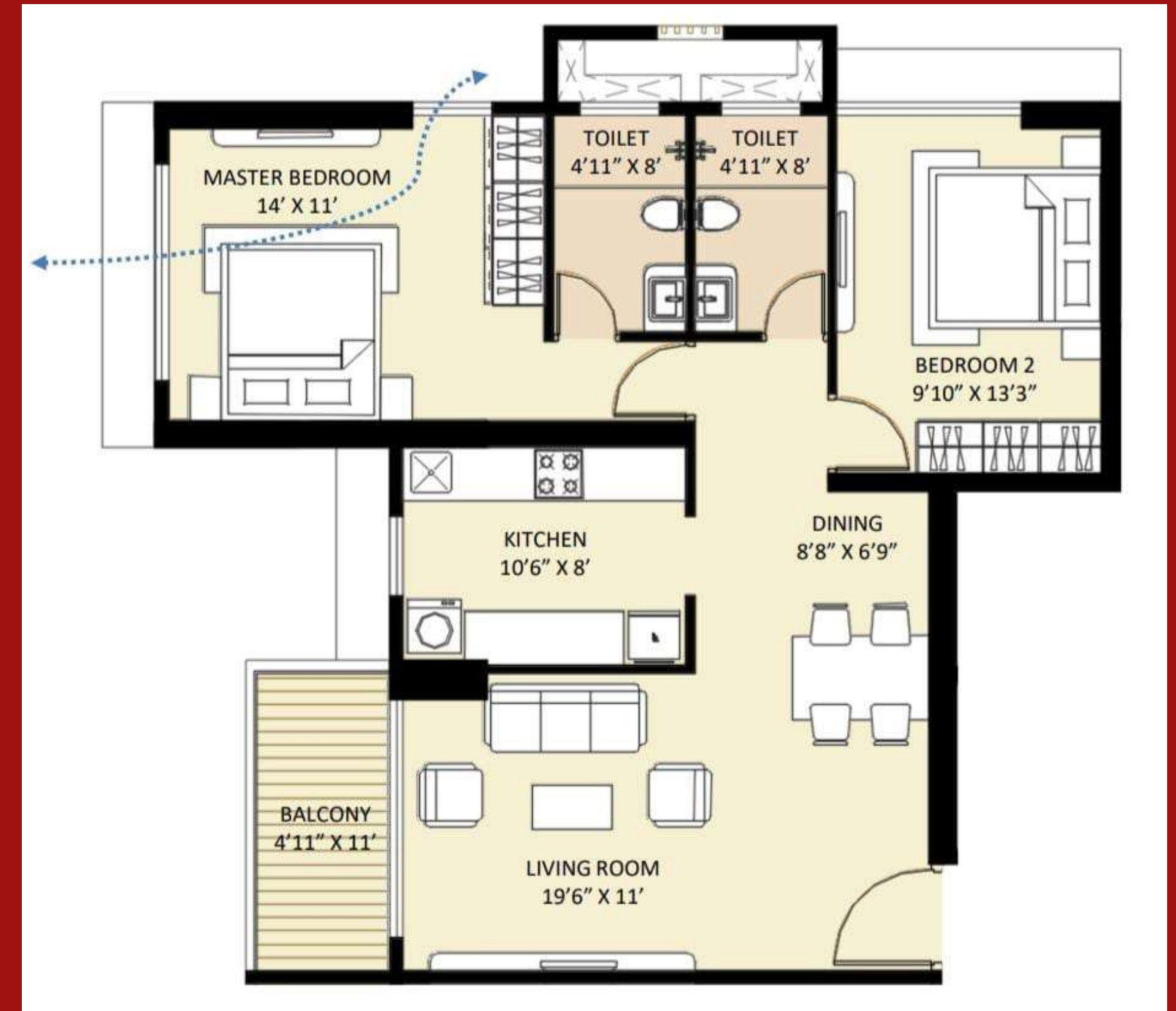
2BHK	SQFT
RERA CARPET AREA	812.57 SQ.FT



2 BHK

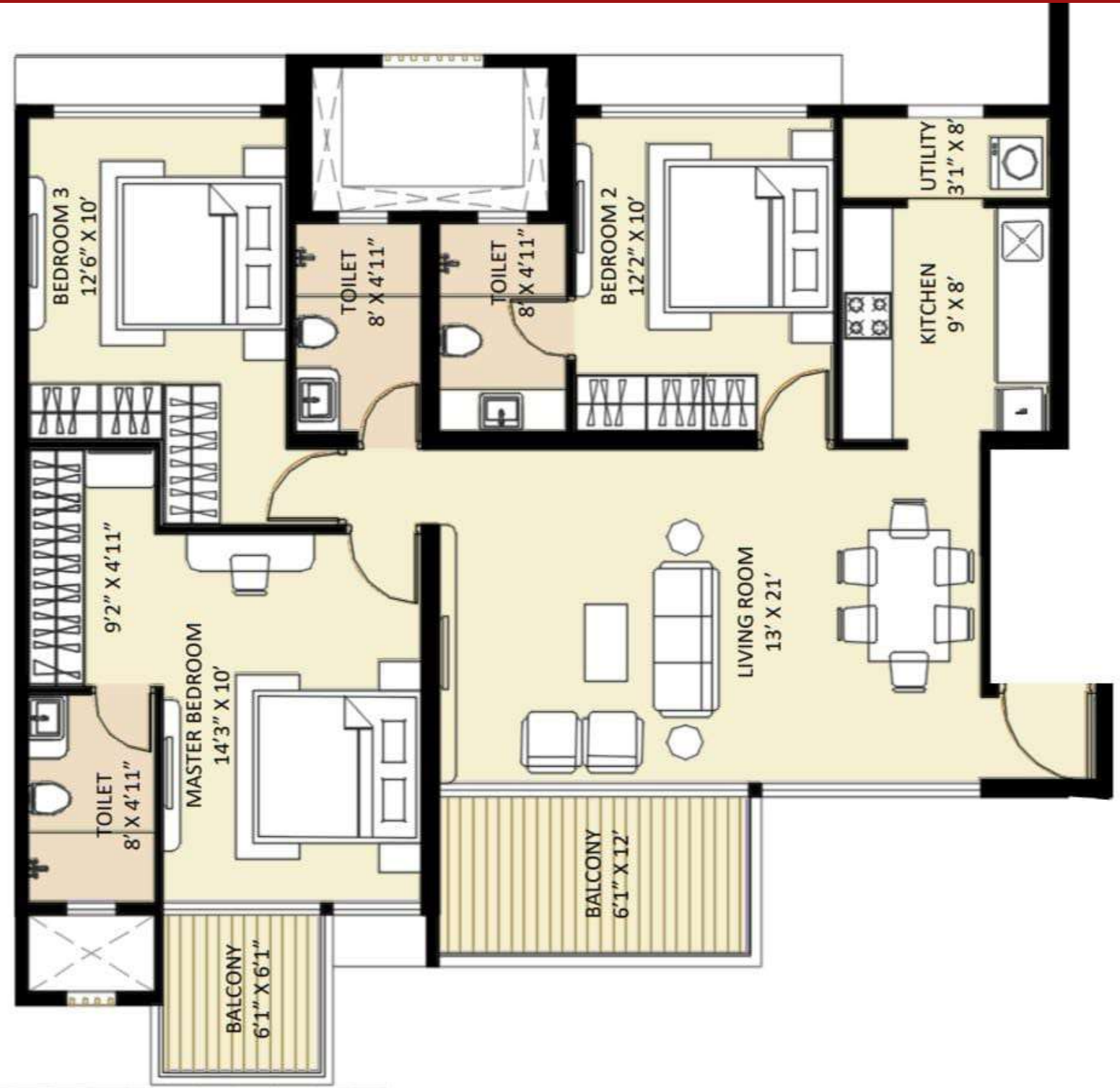


812 sq.ft

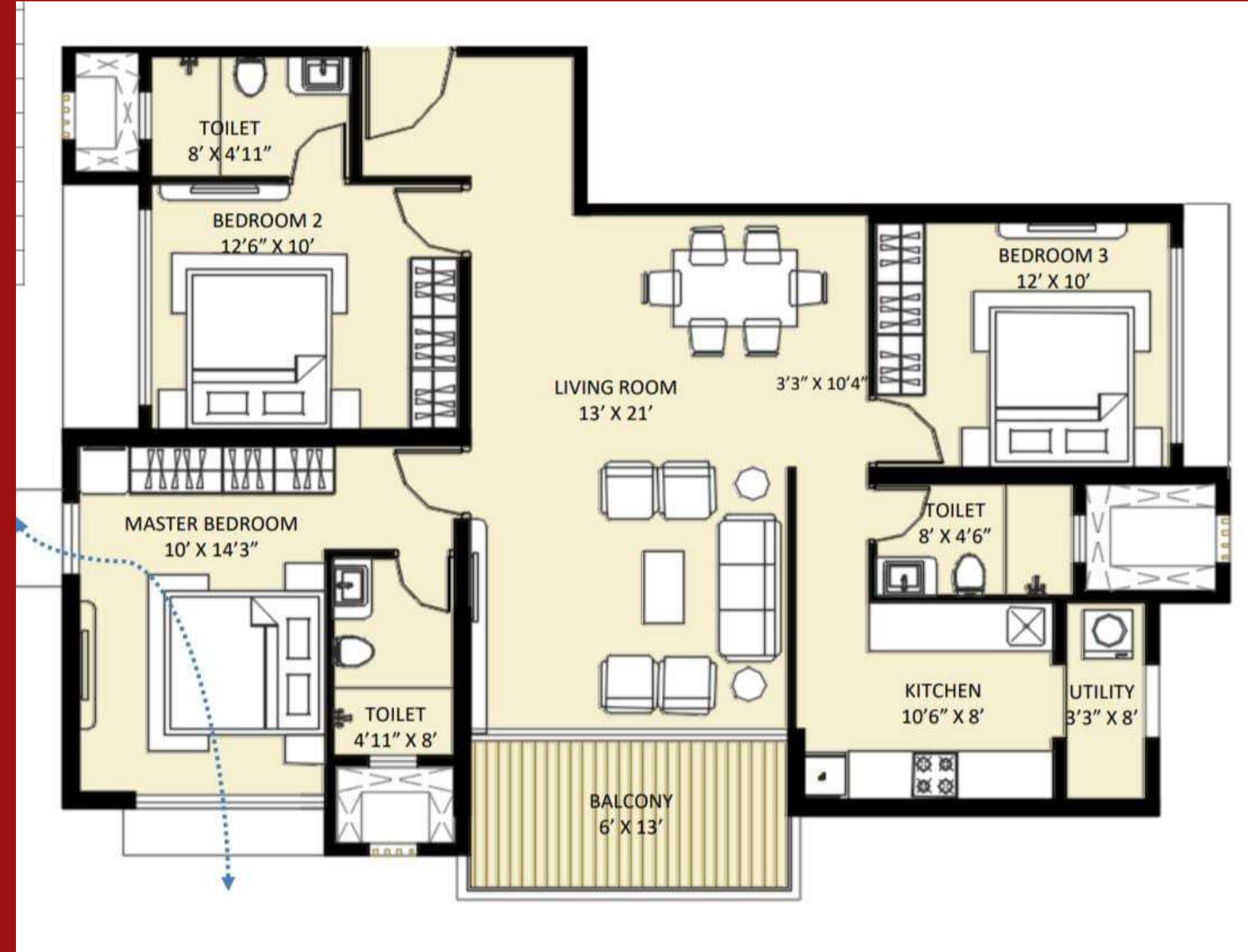


865 sq.ft

3BHK

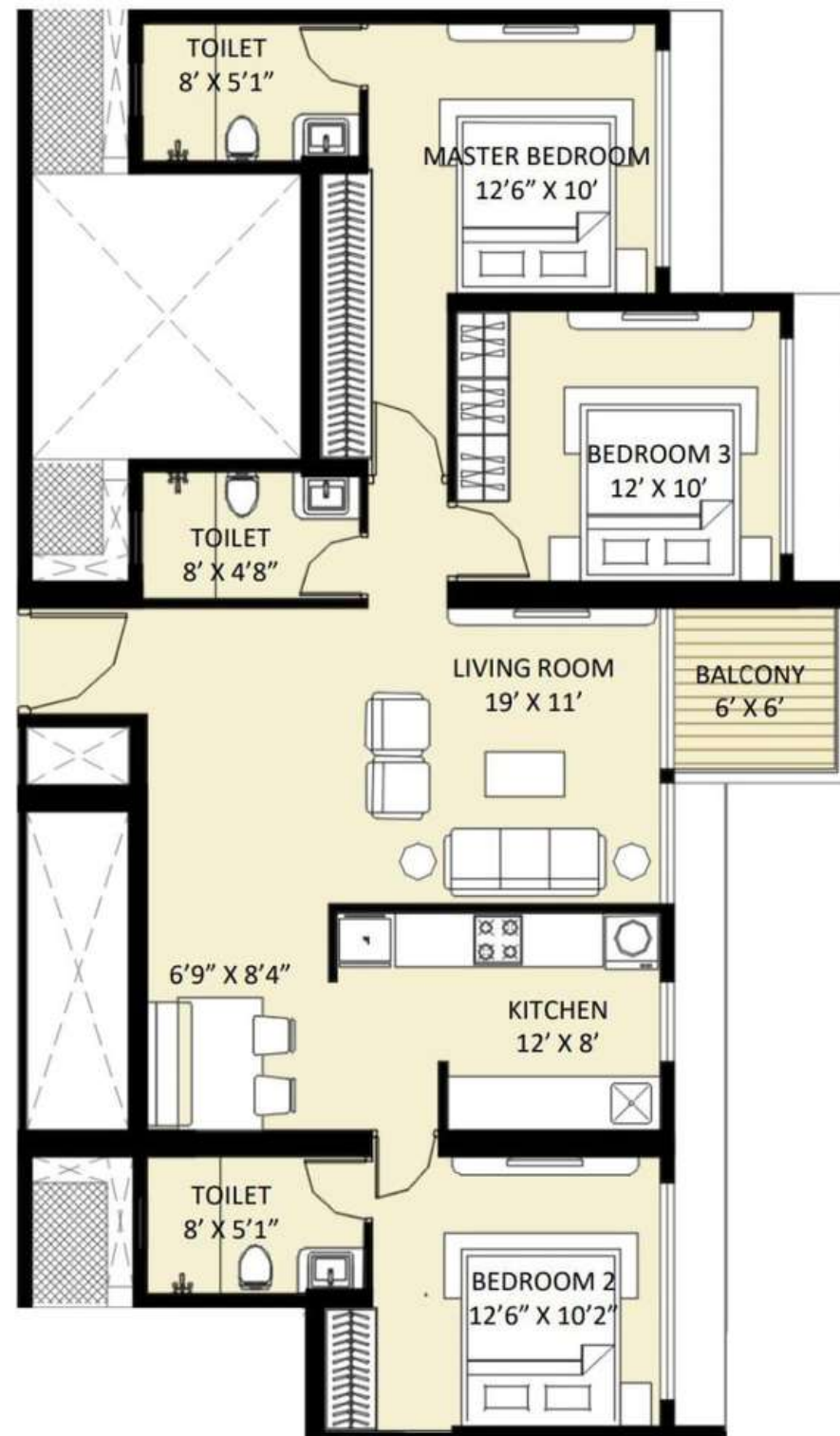


1147

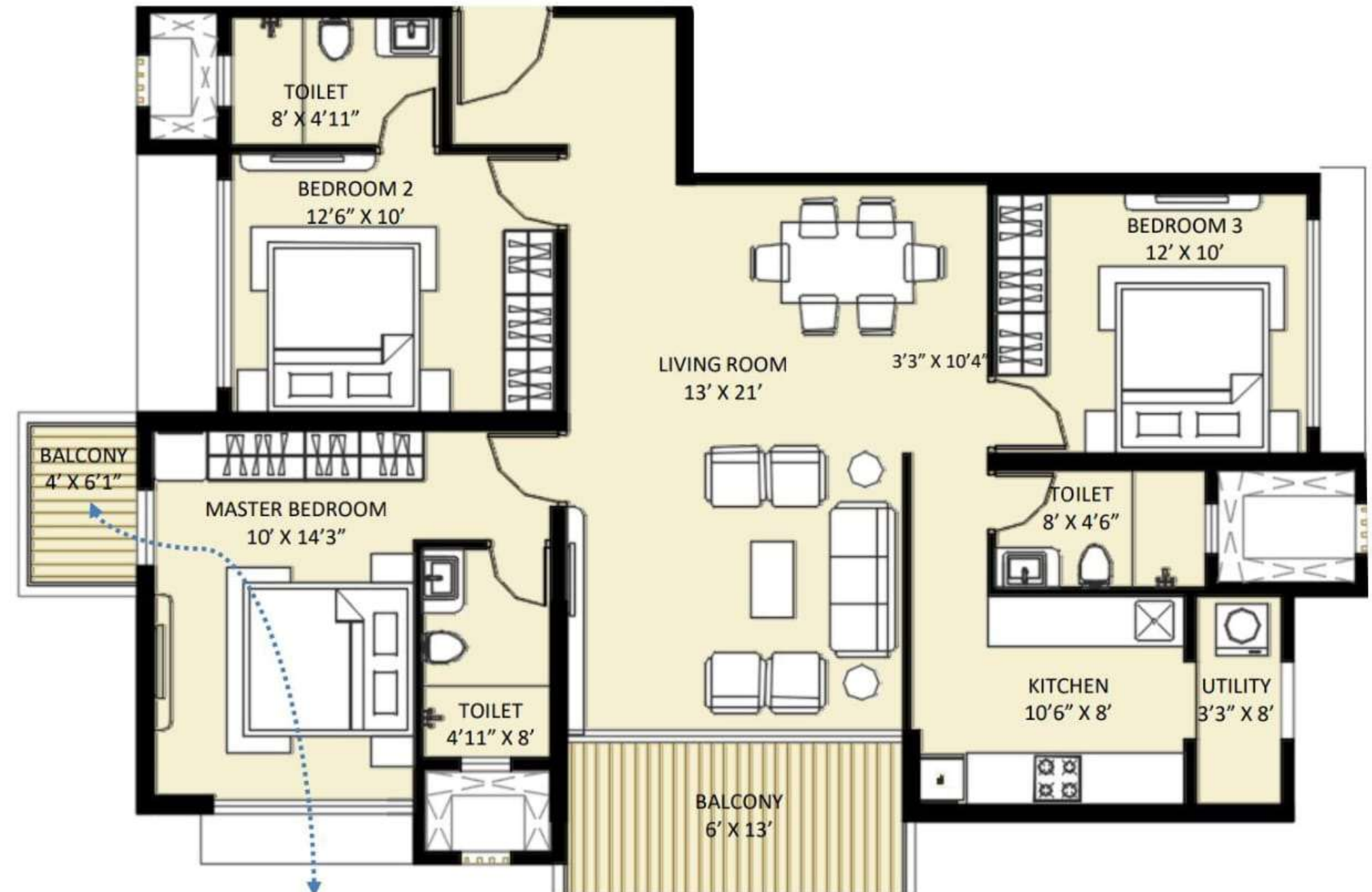


1148

3BHK



990 sqft



1177 sqft

Total Units

2BHK	812sqft to 865sqft
Total Units	94



3BHK	990sqft to 1177sqft
Total Units	48

- UVP's
(Unique Value Proposition)
- 10.4 Usable Height
 - 4 x 8.1 Ft opening door
 - Open to Air Kitchen
 - 2.13 Acre Amenities area
 - 67 Unique Amenities , 100 + Lifestyle
 - Privacy – lobby , kitchen
 - Uniquely designed layouts
 - Vastu + Scientifically designed
 - 6 Flat + 5 Lifts

2 BHK HOMES

CARPET AREA	START PRICE	END PRICE
812 SQ. FT.	₹1,07,85,000	₹1,12,98,000
864 SQ. FT.	₹1,14,75,000	₹1,20,00,000

3 BHK HOMES

CARPET AREA	START PRICE	END PRICE
990 SQ. FT.	₹1,36,10,000	₹1,42,35,000
1147 SQ. FT.	₹1,57,65,000	₹1,64,85,000
1148 SQ. FT.	₹1,57,80,000	₹1,65,00,000
1177 SQ. FT.	₹1,61,75,000	₹1,69,15,000

PRE LAUNCH PASSES STARTED

**ELITE PASS
1,00,000**

**REFUNDABLE TOKEN FOR
FLOOR PREFERENCE**

**RED CARPET
PASS**

2,00,000

**PRIORITY TOKEN FOR UNIT
SELECTION AND PRE
BOOKING**

SOURCING MANAGER

HRUSHIKESH ATPADKAR

7666472598