



GREATER INFRA PROJECTS



**Global**  
**City-VI**

Designed for Happiness

PREMIUM  
VILLAS &  
PLOTS



HOME IS WHERE YOUR STORY BEGINS.

START YOUR JOURNEY IN A COMMUNITY  
DESIGNED FOR A LIFE WELL-LIVED.

Welcome to New opportunity to create the home of  
your dreams in a vibrant community designed for modern living

PREMIUM VILLAS & PLOTS COMMUNITY

Located @ Indrakaran - Rudraram (GITAM)



Approved By



L.P. NO. 007133/LO/HMDA/1700/SKP/2024, 28.11.2024



Investing in real estate is not just about acquiring property; it's about securing a future filled with possibilities. At GLOBAL CITY-VI, we offer you the opportunity to create a lasting legacy through our exclusive villa plots. At GLOBAL CITY-VI, we believe that investing in a villa plot is not just a purchase; it's a commitment to your future. With our exclusive plots, you can create a lasting legacy that your family will cherish for generations.



INVEST IN YOUR FUTURE;  
BUILD A LEGACY.

A villa plot today is a  
home for generations to come.



# Invest in your future build a legacy

A villa plot today is a home for generations to come.

Discover the Future of Real Estate Investment with Global City VI

## High Demand Area:

Located in the thriving West Hyderabad region, Global City - VI is perfectly positioned in a market with high demand and immense growth potential. As part of the booming Mumbai Highway corridor, this strategic location ensures not just significant property appreciation but also an enviable lifestyle for its residents.

## Unmatched Accessibility

Global City VI offers seamless connectivity to the Hyderabad-Mumbai Highway (NH-65) and key areas like Kollur and Patancheru. Its proximity to educational institutions such as GITAM University, IIT Hyderabad, and ICFAI University, as well as business zones like Kokapet IT SEZ, makes it highly appealing to future buyers. The venture is just 25 minutes away from Miyapur and JNTU and conveniently close to ORR Exit No-3, ensuring a perfect balance between accessibility and convenience.

## Sustainable & Secure Investment

This development integrates sustainable features such as avenue plantations, LED street lighting, and rainwater harvesting pits, creating a harmonious living environment. Coupled with 24/7 security, this is not just a purchase but an investment in your family's future—a legacy to be cherished for generations.

## Tailored Properties for Every Vision

Investing in a villa plot at Global City VI provides the freedom to design and build a home that aligns with your unique preferences. With Vastu-compliant plots, clear titles, and bank loan facilities, this project offers the ideal foundation to enhance your quality of life and property value.

## Quality Living Environment

Global City VI is a HMDA-approved gated township designed for a superior standard of living. Featuring 100-foot road frontage, a grand entrance arch, and well-planned infrastructure, the community encourages a lifestyle of comfort and elegance. With amenities like a clubhouse, swimming pool, community hall, children's parks, and a cycle track, every detail has been thoughtfully curated for modern living.

## Booming Neighbourhood

The Mumbai Highway is a gateway to unparalleled opportunities. With thriving residential, healthcare, and industrial developments, the region is transforming rapidly. Surrounded by major industrial hubs like BDL, BHEL, and ODF, the area is also witnessing government-backed infrastructure upgrades, including road expansions and enhanced public transport systems. These developments are driving substantial growth in property values, offering lucrative returns on investment over time.



## WHY INVEST NOW?

Global City - VI follows the tremendous success of Global City V, brought to you by Greater Infra Projects, Hyderabad's most trusted real estate brand. With up to 300% growth and appreciation in the Mumbai Highway corridor, this is the perfect time to secure your stake in West Hyderabad's most promising investment hub.





At GLOBAL CITY-VI, we believe that your home is more than just a villa; it's part of a vibrant community designed to enhance your quality of life. Here, you'll find everything you need to thrive—comfort, convenience, and a sense of belonging. Global City VI is committed to eco-friendly living. Our community features sustainable practices and green initiatives that contribute to a healthier planet and a better quality of life.



A COMMUNITY DESIGNED  
FOR LIVING WELL

A villa plot today is a  
home for generations to come.

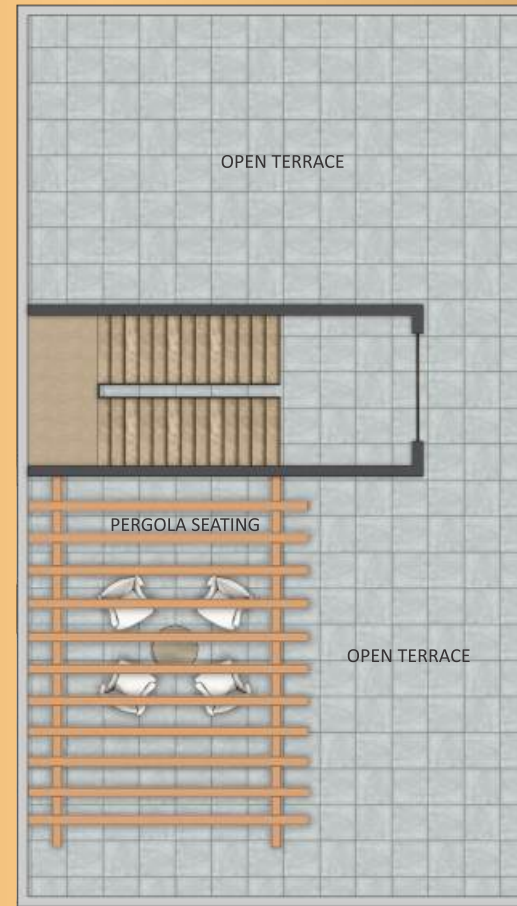
**EAST FACE VILLAS**



GROUND FLOOR PLAN

FIRST FLOOR PLAN

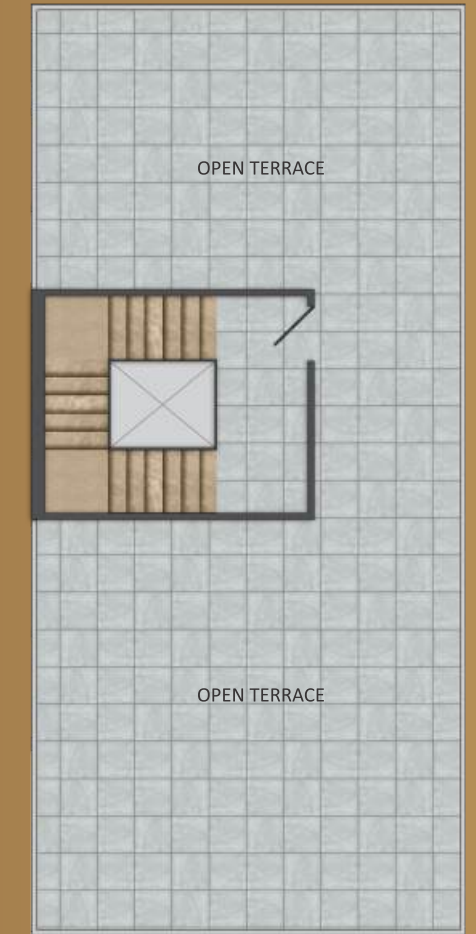
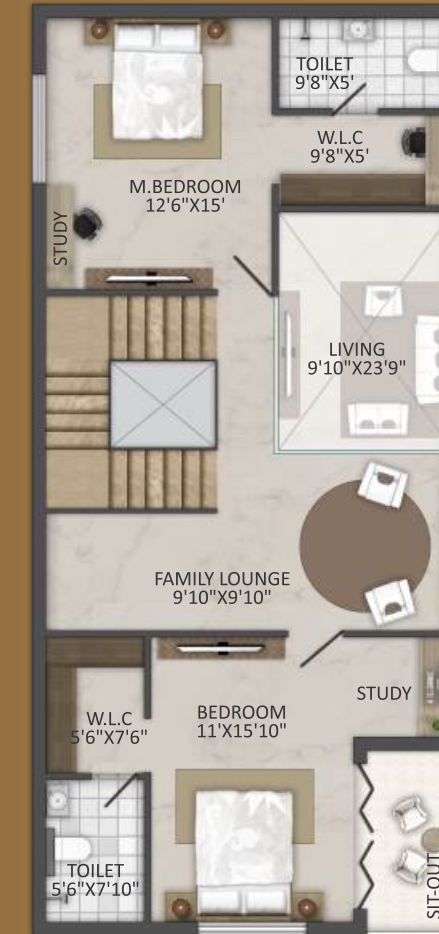
TERRACE FLOOR PLAN



GROUND FLOOR PLAN

FIRST FLOOR PLAN

TERRACE FLOOR PLAN



EXPERIENCE  
A PREMIUM  
LIFESTYLE LIKE  
NEVER BEFORE



## EAST FACING 30' X 50' VILLAS

GROUND FLOOR : 1036 SFT  
FIRST FLOOR : 900 SFT

TOTAL BUILT UP  
AREA : 1936 SFT

Step into a world where luxury and comfort converge seamlessly at Global City - VI Villas. Each villa is a testament to architectural excellence, designed to elevate your living experience beyond the ordinary. From spacious interiors adorned with premium finishes to thoughtfully curated amenities, every detail reflects sophistication and elegance.

## EAST FACING 30' X 60' VILLAS

GROUND FLOOR : 1113 SFT  
FIRST FLOOR : 1205 SFT

TOTAL BUILT UP  
AREA : 2318 SFT



We understand that every homeowner has a unique vision. That's why we offer you the opportunity to create a customized villa that perfectly fits your lifestyle, preferences, and aspirations. Choose from a variety of floor plans or create your own! Our flexible designs allow you to select the number of bedrooms, living spaces, and any additional features that suit your family's needs.



DESIGN YOUR FUTURE.  
BUILD YOUR DREAM VILLA

A villa plot today is a  
home for generations to come.

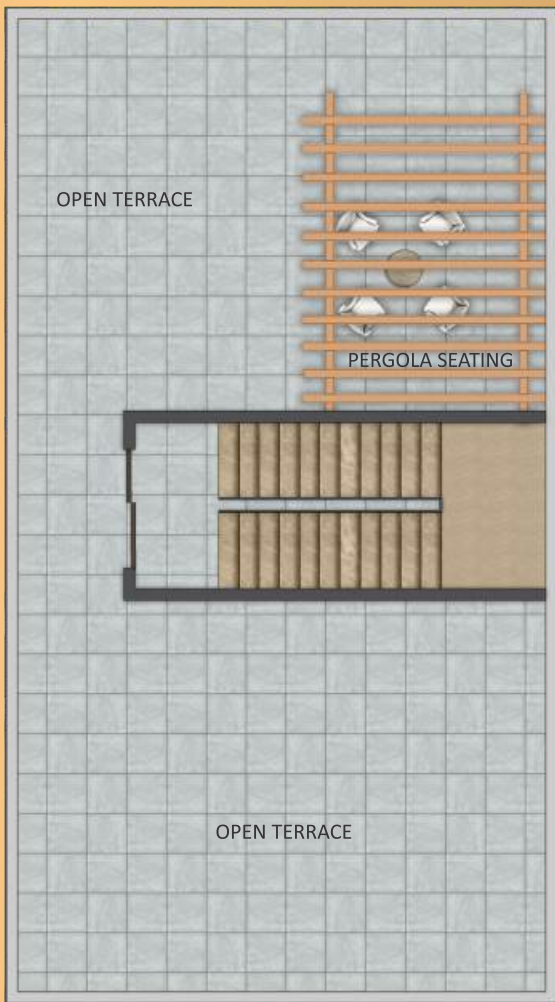
**WEST FACE VILLAS**



GROUND FLOOR PLAN

FIRST FLOOR PLAN

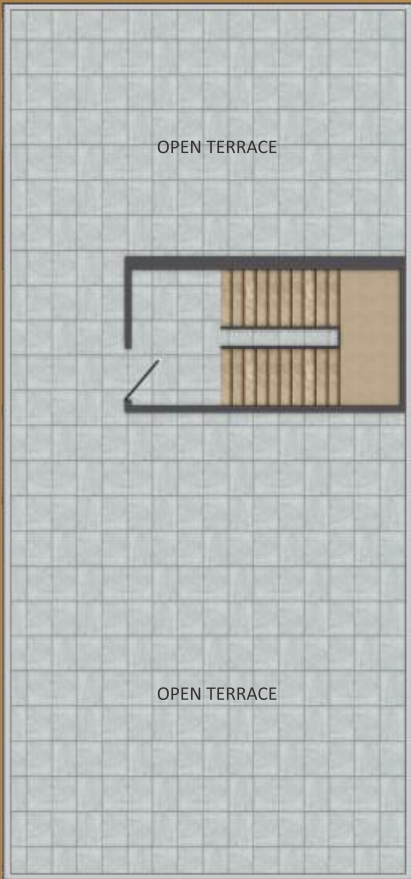
TERRACE FLOOR PLAN



GROUND FLOOR PLAN

FIRST FLOOR PLAN

TERRACE FLOOR PLAN



YOUR DREAM  
VILLA AWAITS.



## WEST FACING 30' X 50' VILLAS

GROUND FLOOR : 990 SFT

FIRST FLOOR : 926 SFT

TOTAL BUILT UP  
AREA : 1916 SFT

Indulge in the finest comforts, whether relaxing in your private garden, unwinding at the state-of-the-art clubhouse, or strolling through lush green landscapes. With world-class facilities, exceptional craftsmanship, and a vibrant community, Global City - VI Villa promises a lifestyle that goes beyond expectations—one where every moment is infused with luxury, convenience, and tranquility.

## WEST FACING 30' X 60' VILLAS

GROUND FLOOR : 1189 SFT

FIRST FLOOR : 1236 SFT

TOTAL BUILT UP  
AREA : 2425 SFT









SAND PIT CHILDREN PLAY AREA



PARK CENTER

Global City - VI believe in the power of nature to enhance your well-being. Our scenic walking trails provide residents with the perfect opportunity to escape the hustle and bustle of everyday life and immerse themselves in the tranquility of their surroundings. Regular walking is a great way to boost physical fitness and mental health. Our scenic trails encourage an active lifestyle, helping you to maintain a healthy routine while enjoying the peaceful surroundings.



#### STRUCTURE

RCC Framed Structure to withstand wind & seismic loads 9" External Walls & 4½" Internal Walls using Cement Bricks and finished with sponge plastering to neat uniform levels.



#### PAINTING

EXTERIOR:  
Two coats of Exterior Acrylic Emulsion Paint (Apex Ultima/Equivalent), Two coats of Putty/Texture/Cladding in Elevation if any as per design and one coat of Primer Enamel Paint for Railings & Grills

INTERIOR:  
Two coats of Emulsion Paint Asian or Equivalent over smooth putty finish



#### FLOORING

900mmx900mm Vitrified Tiles for Drawing / Living / Dining / Kitchen / Bedrooms Wooden Flooring designer Tiles for Master Bedroom Anti-skid Vitrified/Ceramic Tiles for Balconies/Utility/Toilets Granite for Staircases VDF / Concrete Tiles for Parking Areas.



#### DADO

Vitrified/Ceramic Tiles for Toilets up to 7'0" height. Ceramic Tiles up to 4'0" height for Utility/Wash Area.

## VILLA SPECIFICATIONS



#### TOILETS & KITCHEN

Sanitary ware from Jaguar or Equivalent brand CP fittings from Jaguar or Equivalent brand Concealed body Diverters for Shower Concealed Cisterns from Jaguar or Equivalent brand Default Hot & Cold Basin Mixer for Toilets. Water Purifier, Drinking Water & Bore Water points in Kitchen Washing Machine & Multipurpose Tap point in Wash area/Utility.



#### DOORS & WINDOWS

Main Door-Teakwood frame & Teakwood door with Melamine polish Internal Doors-Teak wood frame & Molded Doors Windows -Premium UPVC windows systems with mosquito shutters for Living & Bedrooms Ventilators-UPVC frame with Glass Louvers and with provision for Exhaust Fan.



#### RAILINGS & GRILLS

Balconies-SS/MS Glass Rolling as per design. Staircase-SS/MS Railing as per design.



#### ELECTRICAL

Fire resistant concealed copper wiring of Finolex or Equivalent Inverter wiring for specified points Modular switches/switch plates of Anchor/Legrand or Equivalent AC points for Drawing Room & All Bedrooms Geyser point & Exhaust fan point in all Toilets TV & Telephone points for Living Room & all Bedrooms Provision for Water Purifier, Refrigerator, Chimney. Utility area will have Washing Machine point External Light points for Parking area and setback areas.

CRAFTED FOR  
COMFORT,  
DESIGNED FOR DISTINCTION


PREMIUM FIXTURES - QUALITY SPECIFICATIONS


EXPERIENCE SERENITY WITH SCENIC  
WALKING TRAILS








LIFESTYLE AMENITIES


- 


Club House - Swimming Pool
- 


Gazebos With Seating
- 


Outdoor Yoga Lawn
- 


Kids Play Area
- 


Cycling Track
- 


Outdoor Games
- 


Community Hall
- 


Lush Green Central Park
- 

Barbecue Pits
- 

Elders Seating Area
- 

Jogging / Walking Track
- 

Avenue Plantation
- 

Elders Park
- 

Landscape Gardens

A COMMUNITY DESIGNED  
FOR LIVING WELL

The heart of our community, the clubhouse serves as a gathering place for residents. Host events, participate in activities, or simply relax with neighbour in this welcoming space. Here; we designed with safety and fun in mind, our children’s play areas offer engaging and secure environments for kids to explore, play, and make lifelong friendships.



# Global City-VI

Designed for Happiness

30+

FACILITIES &  
AMENITIES

- FACILITIES
- + HMDA Mega Gated Township

+ Layout is as per Vaastu

+ 100% Clear Title

+ Compund wall entire Layout

+ Premium Gated Community

+ Grand Entrance Arch

+ Prime Residential Zone (R1)

+ Fast Growing Residential Area

+ Rainwater Harvesting pits

+ STP ( Sewage Treatment Plant )

+ Footpath tiles with Cubing Stones

+ 100' 40' & 30' All CC Roads

+ Electricity with LED Street Lights

+ Water Connection to each plot

+ Social Infrastructure Space

+ Water supply through Over Head Tank

+ Pleasant Environment

+ 24/7 CCTV Surveillance Security

+ Avenue Plantation for Entire Layout

+ Underground Drainage

+ Underground Electrical System

+ Master Plan 100' Road facing Venture







# CONNECT AND ENGAGE IN VIBRANT COMMUNITY SPACES.

Experience the sights and sounds of nature as you walk along the trails. Whether it's the gentle rustle of leaves, the chirping of birds, or the vibrant colors of blooming flowers, each step will reconnect you with the beauty of the outdoors. The trails are designed with families in mind, offering safe and enjoyable spaces for children and adults alike. Bring your kids for a fun outing, or enjoy a leisurely walk with your furry friends.



CLUB HOUSE ARIAL VIEW



SWIMMING POOL



SNOOKER



CHESS



FOOSBALL TABLE

CLUB HOUSE FRONT VIEW







**Meet Syed Imam:**  
CMD  
a visionary leader  
and strategic  
business professional.



Syed Imam is a seasoned business professional with over a decade of exceptional experience in the corporate world.

Renowned for his strategic mindset and sharp eye for opportunities, He has consistently demonstrated expertise in navigating the dynamic realms of marketing and entrepreneurship.

A natural leader with a commitment to excellence, Syed inspires his teams to achieve excellence by fostering collaboration and creativity.

His ability to anticipate trends and craft impactful ideas underscores his reputation as a true visionary. With an unparalleled commitment to growth and a proven track record of success, Syed Imam continues to set new benchmarks in the business landscape, driving transformative outcomes with passion and purpose.



OUR LEGENDARY  
MILESTONES

COMPLETED PROJECTS

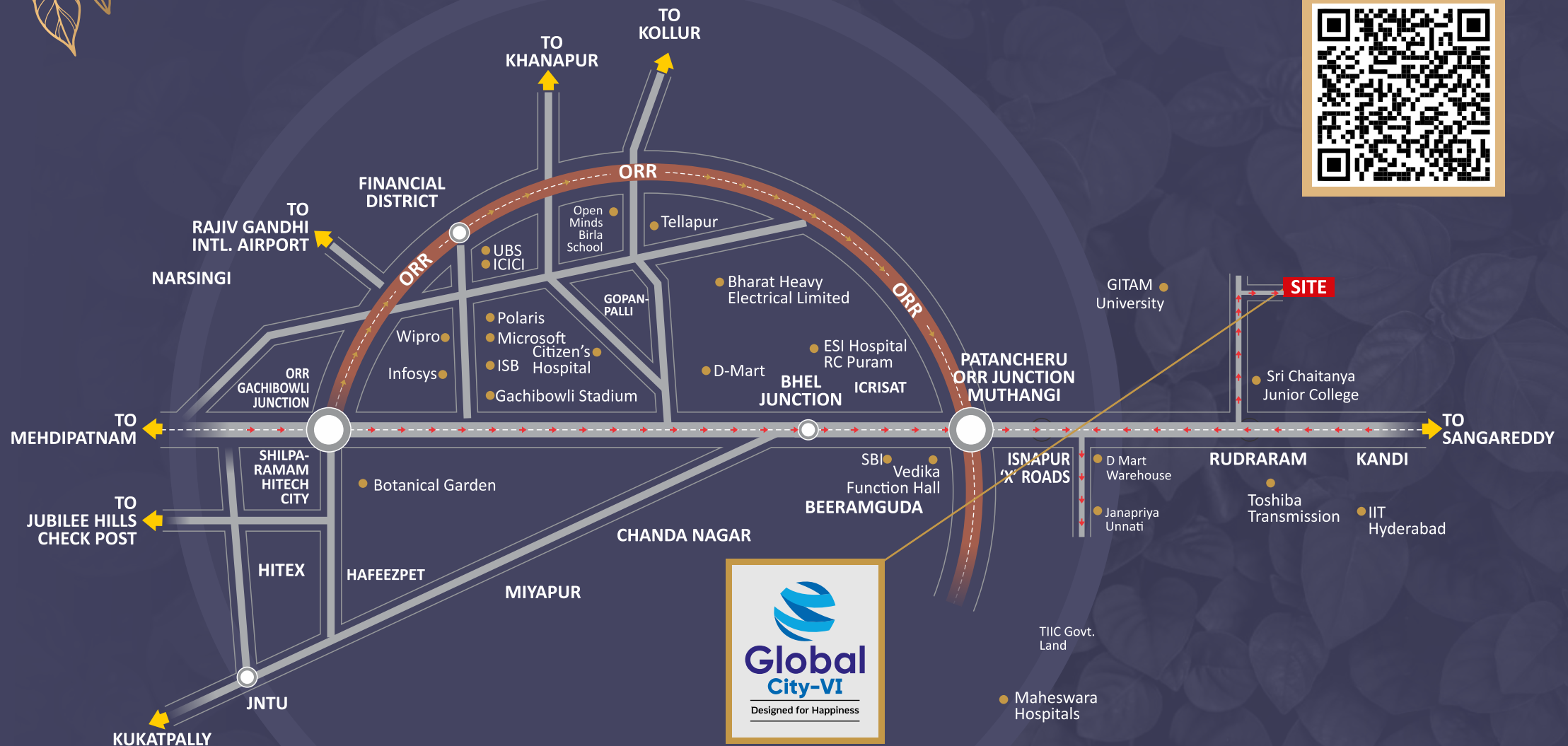
<b>Green Hill Farms @ Yadadri</b> PHASE 1 & PHASE - 2	<b>True Pride @ Bacharam</b> (L.P. NO. 000007/LO/PIg/HMDA/2019)	<b>LR Palm Meadows @ Rampally</b> (L.P. NO. 000035/LO/PIg/HMDA/2018)
<b>Global City @ Rudraram</b> (L.P. NO. 000068/LO/PIg/HMDA/2018)	<b>LR Medchal County @ Medchal</b> (L.P. NO. 07/LO/PIg/HMDA/2021)	<b>Highway City @ Yadadri</b> (T.L.P. NO. 73/2017/H)
<b>Global City - II @ Nandigama</b> (L.P.NO. 000020/LO/PIg/HMDA/2019)	<b>Sri Yadadri Garden's @ Yadadri</b> (DTCP Approved Layout: T.L.P. NO. 15/2021/H)	<b>Rampally County</b> (L.P. NO. 000047/LO/PIg/HMDA/2022)
<b>Global City - III @ Isnapur</b> (L.P.NO. 000098/LO/PIg/HMDA/2018)	<b>RR Kompally County @ Near Kompally</b> (L.P. NO. 000367/LO/PIg/HMDA/08.11.2021)	<b>Global Highway City</b> (TLP-0004/LO/3054/2022)
<b>Greater Infra Resorts @ Shadnagar</b> (T.L.P. No. 24/2019/H)	<b>Keesara County @Bogaram</b> (L.P. NO. 000212/LO 000212/LO/PIg/HMDA/2021)	

ONGOING PROJECTS

<b>Global City - V @ Indrakaran</b> (L.P. NO. 000299/LO/PIg/HMDA/2021)	<b>Kompally County - II @ Medchal</b> (L.P. NO. 00062/LO/PIg/HMDA/21.03.2023)	<b>Global Village @Kadthal</b> DTCP Approved: (TLP NO. 128/2021/H))
<b>Global City - RRR</b> DTCP Approved: (TLP NO. 236/2022/H)	<b>Kompally County-III @Medchal</b> (L.P. NO. 005462/FLT/HMDA/1234/MED/2024)	



SCAN ME  
FOR LOCATION



A Project By



**Head Office - Ameerpet**

Flat No. 1314, 12th Floor,  
Vasavi MPM Grand,  
Metro Junction, Pillar No. 1065,  
Ameerpet, Hyderabad - 500 073.

**Branch Office - Tarnaka**

12-13-111, Street No.3,  
Opp. Sri Chaitanya School,  
Big Bazar, Back Side,  
Tarnaka, Hyderabad - 500 017.

Promoted By



**Branch Office - Habsiguda**

Avani Infra Developers, Flat No. 201,  
3rd Floor, Madhusha Apartments,  
Opp. Kapil Chit Funds, Street No.5,  
Habsiguda, Hyderabad - 500 007.

**Architect & Structural**



**Nirgun Associates**

4th floor, SS Enclave, Jayabheri Enclave,  
Chhota Anjaiah Nagar, Gachibowli,  
Hyderabad - 500 032.

Call for More Details