



PANORAMA

Kathgodam

AT THE FOOTHILLS OF KUMAON HILLS

A man and a woman are sitting on a dark grey sofa in a bright, modern apartment. The woman is on the left, wearing a light pink sweater and pants, looking towards the man. The man is on the right, wearing a white t-shirt and white pants, looking back at her. They are both smiling. Large windows in the background show a clear blue sky and some greenery. A green geometric shape is overlaid on the bottom left of the image.

The Ultimate Retreat

Envisioned as the ultimate retreat, this haven nestled in the majestic mountains of Uttarakhand gives you your perfect home. Located in the foothills of Kumaon's Fatehpur range, the luxury Panorama Homes's residences offer a lifestyle among nature.

Every morning you get to wake up to the sound of birds, see the panoramic views of the majestic nature, and sleep in the night under the clear sky, seeing the stars. The 270° view from your balcony allows you to get the feeling of living in a resort every day.

Panorama Homes offers a limited yet meticulously designed 56 3 BHK and 4 BHK apartments that are equipped with the best of amenities. These premium amenities, like a biometric safety lock, 24/7 water supply, wellness centres, and more, ensure that your lifestyle here is filled with safety, health, and convenience.

This exclusive space is a promise of a high-quality life where you get to rediscover yourself every day. Live a high-quality life in the bliss and serenity of nature, where everything is conveniently located at a short, fun drive.




The Layers of Unmatched Luxury

While Panorama Homes is nestled in the serenity of nature to offer you an abode of abundant calm, it is not deprived of modern conveniences. It is the blend of premium amenities in such a place that redefines what luxury living truly is.

At Panorama Homes, you get to live an unbroken dream where you slide the doors of your wide balcony to soak in nature's tranquillity. The clean air, the open spaces, the silence of nature, and the kids play area all provide you with the perfect environment to make the most of your time with your friends and family.

The touch of connectivity adds another layer of convenience to your luxurious life, where, be it school, hospital, fine dining, or an adventure, everything is minutes away. Panorama Homes is where you get to live your future lifestyle in the present!

Wondering where such an idyllic and secluded haven is located that you haven't found out about it yet? Well, our premium apartments are located in Haldwani!



A HIDDEN GEM

Nestled at the base of majestic mountains, Haldwani captivates with its stunning landscapes and vibrant cultural heritage. The town offers clean air, serene surroundings, and nearby attractions like Jim Corbett National Park and Nainital, perfect for exploration.

Panorama Homes, located in the foothills of Kumaon's Fatehpur range, combines nature's tranquillity with modern luxury. Offering 270° panoramic views, it provides a resort-like experience with premium amenities, ensuring a high-quality lifestyle in Haldwani's peaceful environment.

PANORAMA IS A RETREAT
THAT OFFERS A BIT OF
EVERYTHING, CAPTURING
THE ESSENCE OF THE
PERFECT LIFESTYLE.



Why Panorama Homes?



NATURAL BEAUTY

Experience breathtaking scenic views from your balcony, surrounded by the serene landscapes of Haldwani. Nature's tranquility is always within reach, making every day feel like a getaway.



QUALITY OF LIFE

Live a balanced lifestyle with modern amenities in the heart of Haldwani's natural beauty. Enjoy a safe, clean environment perfect for families to thrive.



RAPID DEVELOPMENT

With growing infrastructure, improved roads, healthcare, and connectivity, Haldwani is evolving fast. Panorama Homes ensures a comfortable and convenient lifestyle, now and in the future.



RICH IN CULTURE

Immerse yourself in the rich cultural and spiritual heritage of Uttarakhand. Panorama offers proximity to vibrant festivals, fairs, and spiritual sites, enriching your living experience.



ACCESSIBILITY TO ADVENTURE

Located near some of Uttarakhand's most popular trekking trails, hill stations, and adventure spots, Panorama Homes is ideal for those who seek an active, outdoor lifestyle amidst nature.



INVESTMENT POTENTIAL

With the rise in tourism and appreciating property values, Panorama Homes is an excellent investment opportunity, offering high returns in one of Uttarakhand's most sought-after locations.



Relish a life of effortless Serenity

Panorama offers a lifestyle that allows you to reconnect with yourself. Disengage from the outside noise and embrace inner peace. Relax and rejuvenate with our premium amenities.

56 Meticulously Designed Homes
Prime Location | Easy Connectivity | Lush Greenery
270° Balcony View | Fitness Centres

Modern Comforts in Natural Beauty

Panorama Homes is a place that is designed to be in nature yet equipped to provide you with the best of modern conveniences. These amenities ensure that while your worries take a back seat, you can make the most of your time.



Gymnasium | Yoga zone | Health spa | Lush green landscaping
Outdoor spaces for senior citizens
Evergreen trees in periphery | Clean & green ambience

Key Utility Facilities for your safety and conveniences



High Level of
Security System



100% Power
Backup



360° Scenic
Grand View



Ample Green
Area



Close Proximity
to Railway Station



Dedicated VRV
System For Flats



On Highway



Biometric
Safety Lock



Gymnasium



24 X 7 Filtered
Water Supply



Skypool



No Fog Zone



Unparalleled & Elevated Sense Of Luxury

Taking the level of luxury living to an elevated scale, Panorama offers the unique 'Skypool'.

This temperature-controlled rooftop swimming pool allows you to calmly sink into the bathing pleasure where the sky and the mesmerizing mountain view are your only companions.

The Skypool offers an unparalleled sense of contentment to the Panorama residents that others can only imagine!

PLACES TO EXPLORE



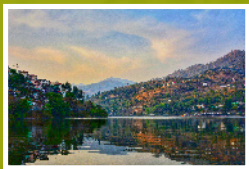
Jim Corbett National Park

Just 50 km from Haldwani, Jim Corbett National Park offers thrilling wildlife safaris, dense forests, and a chance to spot tigers, making it a perfect destination for nature enthusiasts and adventure seekers.



Nainital

Nainital, a scenic hill station just 40 km from Haldwani, offers boating at Naini Lake, shopping on Mall Road, temple visits, and stunning views from Snow View Point.



Bhimtal

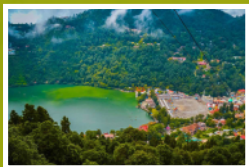
A serene lake town near Haldwani, it offers boating, fishing, and an island aquarium. Located 22 km away, it's a perfect spot for a peaceful day trip immersed in natural beauty.

PLACES TO EXPLORE



Ramgarh

Known as the "Fruit Bowl of Kumaon," this serene hill station near Haldwani offers fruit picking, nature walks, and breathtaking Himalayan views, making it a perfect spot for a peaceful getaway.



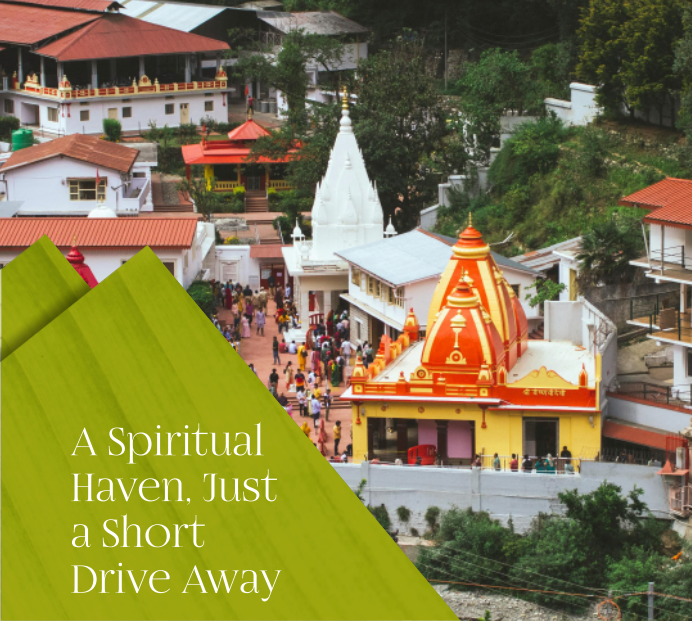
Sattal

A serene paradise with seven interconnected lakes, it offers bird watching, boating, and trekking. Its tranquil environment and clear waters make it a perfect destination for nature enthusiasts and relaxation.



Mukteshwar

A hill station 50 km from Haldwani, Mukteshwar offers breathtaking Himalayan views, rock climbing, rappelling, and visits to the Mukteshwar Temple, making it a perfect destination for adventure and nature lovers.

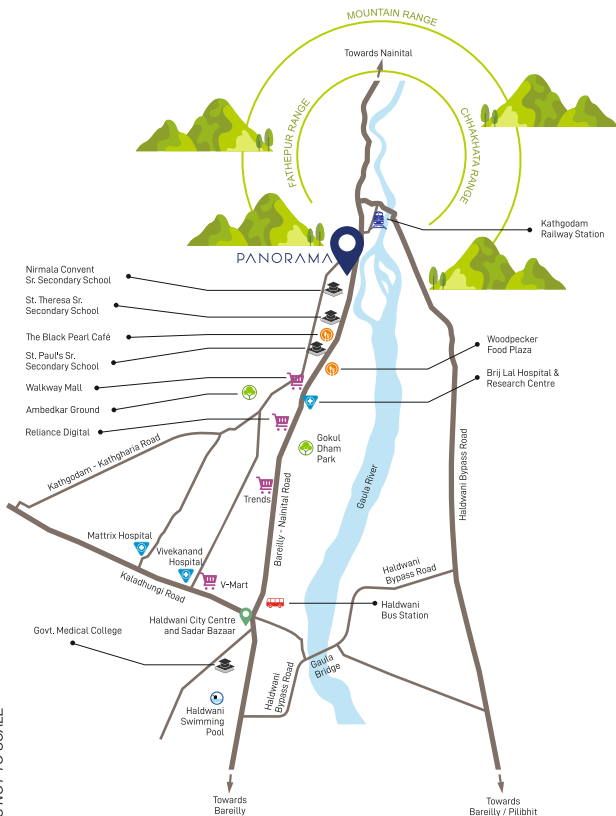


A Spiritual Haven, Just a Short Drive Away

One of Uttarakhand's most revered and sought-after spiritual destinations, Baba Neem Karoli Kainchi Dham, is only a short 2 hours and 15 minutes drive from Panorama. This sacred sanctuary, nestled in the Kumaon Hills, attracts devotees and spiritual seekers from all over the world. With its serene environment and profound energy, Kainchi Dham is a perfect place to experience peace and spiritual awakening. Whether you're looking for a soulful escape or seeking a deeper connection with yourself, Kainchi Dham offers a tranquil retreat that complements the calm and beauty of life at Panorama. Feel the divine presence, embrace the spiritual ambiance, and return to your home in Panorama, rejuvenated and at peace. At Panorama, the balance of nature, luxury, and spirituality is always within reach.

A short, scenic drive brings you to a place where faith and serenity meet.

location



Typical 4 BHK Type 01

Super area - 2710.29



Typical 4 BHK Type 02

Super area - 2307.42



Typical 3 BHK Type 01

Super area - 2214.79



Typical 3 BHK Type 02

Super area - 2168.49



Typical 3 BHK Type 03

Super area - 2019.45



Typical 3 BHK Type 04

Super area - 1905.56

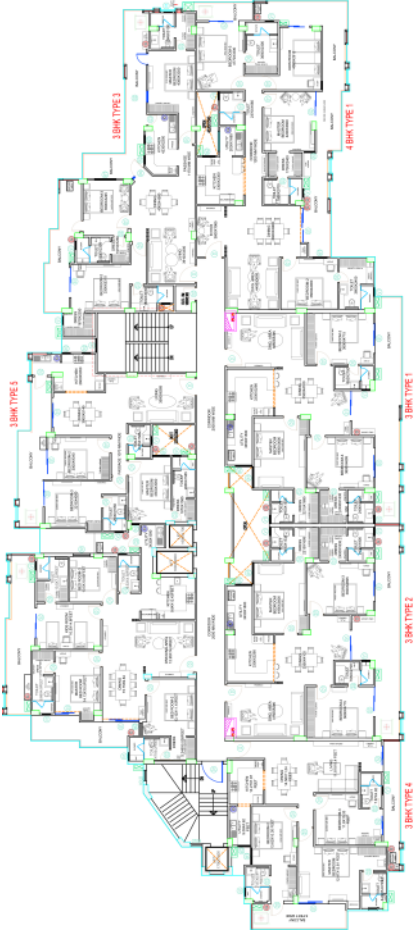


Typical 3 BHK Type 05

Super area - 1660.59



Typical Floor Arrangement



Embrace a Life of Comfort and Opportunity

Panorama Homes offers more than just a living space; it's an investment in a lifestyle. With its prime location, breathtaking views, and premium amenities, these homes provide the perfect blend of comfort and opportunity. Nestled in the thriving region of Haldwani, they promise exceptional growth potential. As the area flourishes, so does the value of your space. Step into a world where nature's peacefulness thoughtfully integrated into modern living.



Your dream life awaits at Panorama - Your Sanctuary.
Your Retreat, Your Home.



Interior images shown here are an artist's impression only. Furniture, fixtures, upholstery, etc shown are not part of the offering.

A Project Of:

KR | **INFRA
HEIGHTS**

Site Address:

Near ITBP Transit Camp, Nainital Road,
Haldwani, Uttarakhand - 263139

Corporate Office:

K R Tower, Seesh Mahal,
Near St. Theresa School Nainital Road,
Haldwani, Uttarakhand - 263139

info@panoramahomes.in
www.panoramahomes.in

9091 001 009

This brochure is purely conceptual. The information and visuals contained herein are artistic impressions and are meant to be indicative and are subject to change as may be required by the authorities, architects and cannot form an offer or contract. The promoters reserve their rights to make alterations, additions and amendments as may be necessitated from time to time. Specifications and materials mentioned here are subject to availability.