



Bhatagaon, Raipur

(E) sales@vinayakgreenscape.com
www.vinayakgreenscape.com

Don't miss this golden opportunity to own a plot in Vinayak Green Scape. Schedule your site visit now!

RERA NO.: PCGRERA210425001911

Disclaimer: All images, visuals, and perspectives used in this brochure/advertisement are artistic impressions and are meant for presentation purposes only. Actual specifications, layout, and amenities may vary at the time of possession. This is not a legal offering. All plans and approvals are subject to change as per authorities' direction and developer's discretion.

A Lifestyle Project By



Engineering Consultants:



+91 98931 05616
admin@onemep.com

Architecture &
Landscape Design by



+91 -77520 00437
projects.ecourb@gmail.com

PROJECT APPROVED BY



WHERE LUXURY MEETS GREEN LIVING





Welcome to Vinayak Greenscape, a thoughtfully designed premium residential plotting project that blends modern living with natural serenity. Strategically located in Bhatagaon, Raipur, this project offers limited plots of large sizes, each designed to offer unparalleled space, comfort, and convenience. Ideal for those who seek a secure, vibrant, and eco-friendly living environment, Vinayak Green Scape promises a lifestyle that combines luxury with the charm of nature.





ELEVATED LIVING

Our amenities are carefully curated to ensure that every resident enjoys a safe, comfortable, and enriching lifestyle.



GRAND ENTRY COURT

A majestic entrance that sets the tone for the elegance that lies within. The beautifully designed grand entry adds a touch of sophistication to the gated community.



RAIPUR'S MOST PREMIUM LUXURY LIVING – WHERE LIFE RISES ABOVE ORDINARY

Welcome to a landmark destination in Raipur that redefines upscale living — **where every plot spans over 1980 sq. ft.**, offering space not just to live, but to thrive. Embrace a lifestyle where elegance meets innovation, surrounded by eco-friendly landscaping and thoughtfully designed green zones. With smart infrastructure and future-ready amenities seamlessly integrated, this gated haven isn't just a residence — it's a vision of tomorrow's living. Come home to a community where luxury is a standard, not an upgrade.



CRAFTED FOR THE ELITE –
PREMIUM LIVING IN
EVERY SQUARE FEET

RAIPUR'S

Finest Address – Where Grandeur Lives

Plot Sizes: Above 1800 sqft

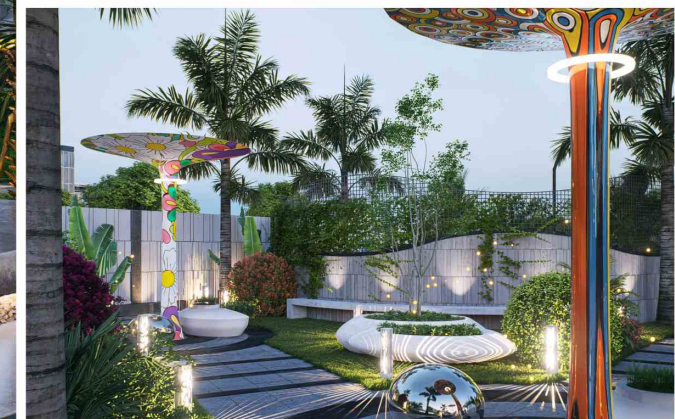
Total Plots: Limited availability, ensuring exclusivity

Landscaping: Eco-friendly and sustainable design.

Infrastructure: Smart and future-ready facilities.

📍 Located in the heart of **Bhatagaon, Raipur,**

Vinayak Green Scape offers seamless connectivity to prominent city landmarks, making everyday commuting effortless and convenient.

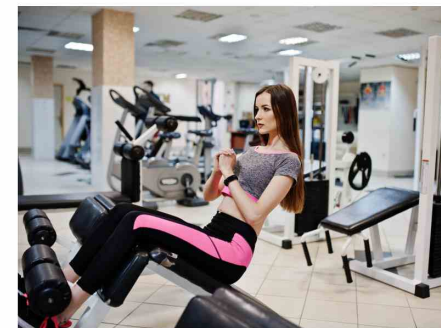
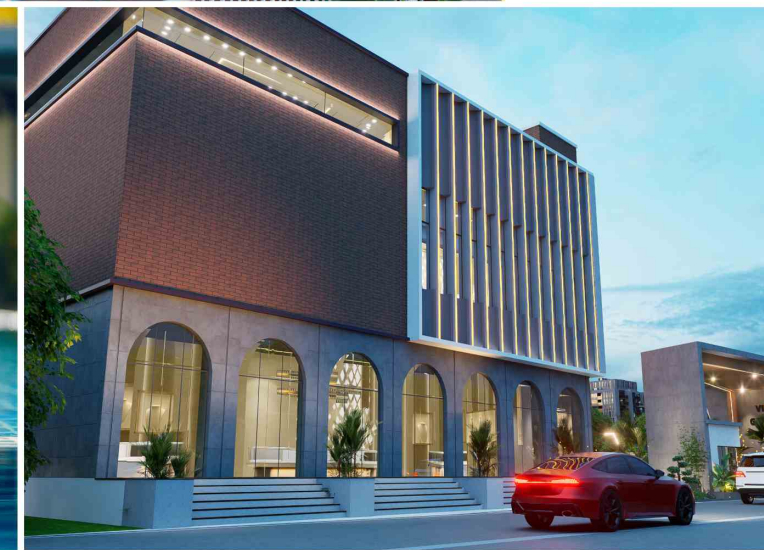
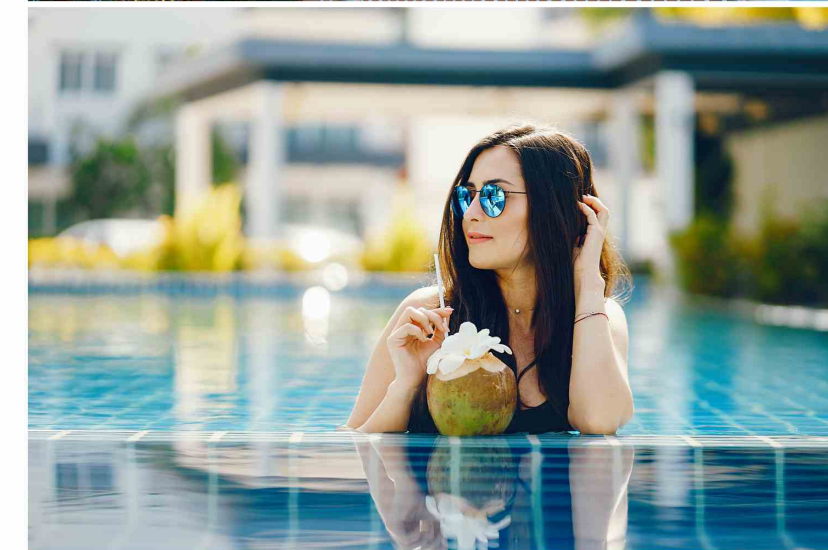




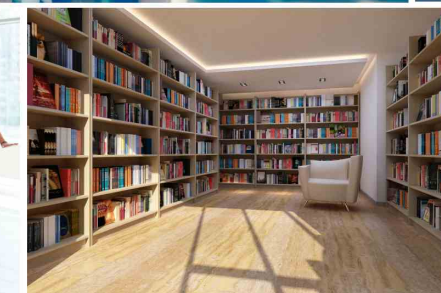
Unwind, celebrate, and create memories at our exclusive clubhouse - your social hub within the campus. Whether it's quality time with family or fun evenings with friends, this is where good times come naturally.

Lifestyle Amenities at the Clubhouse :

- INDOOR MULTIPURPOSE COURT
- SWIMMING POOL
- GYMNASIUM
- LIBRARY
- LOUNGE
- TABLE TENNIS
- YOGA/ZUMBA
- INDOOR GAMES
- GUEST ROOMS
- CONVENIENT SHOPPING
- BANQUET HALL



CLUBHOUSE COMFORTS COMMUNITY CONNECTIONS





WHERE EVERY DAY FEELS LIKE A GARDEN PARTY OF LIFE

Step into a lifestyle that blends natural serenity with luxurious indulgence. Surrounded by beautifully landscaped gardens and fresh, unpolluted air, this is where your mornings begin with scenic views and your evenings end in celebration. From open green spaces to nature-kissed pathways, every element here is crafted to elevate your everyday. It's not just a home—it's where life feels like a party in the lap of nature.





Salient features



Wide Driveways

Spacious and well-maintained driveways ensure hassle-free movement for vehicles, enhancing the overall convenience for residents and their guests.



Sit-Out Areas

Tranquil sit-out areas where residents can unwind, socialize, and connect with nature, offering the perfect escape from a busy life.



Underground Electrification

Aesthetic and safe electrical infrastructure with underground wiring that enhances safety and reduces visual clutter.



Children's Play Area

A vibrant and secure play zone where children can enjoy, socialize, and grow. Designed with safety in mind, it encourages outdoor play and fun-filled evenings.



Underground Drainage System

An advanced underground drainage network ensures a hygienic and clean environment by efficiently managing wastewater and rainwater.



Secured Campus with CCTV & Security Guards

A gated community with 24/7 CCTV surveillance and well-trained security personnel ensures the safety and peace of mind of all residents.



Foot Path

A dedicated walking track where residents can enjoy their morning jogs or peaceful evening strolls, fostering a healthy and active lifestyle.



Underground Water Supply

Continuous water supply to every plot through a well-planned underground system, ensuring a seamless water distribution network.





Step into a sanctuary where every blade of grass, every blooming flower, and every stone pathway has been thoughtfully curated to awaken your senses and calm your soul. Our landscape gardens are more than just green spaces — they are expressions of elegance, harmony, and mindful living.



LANDSCAPED TO INSPIRE,
DESIGNED TO RELAX







STRATEGICALLY LOCATED, SEAMLESSLY CONNECTED



1 Km From - Ring Road 1
Ensuring quick and easy access to other parts of the city



7 Km From - Jaistambh Chowk
The bustling city center, providing access to commercial and retail establishments.



16 Km From - Airport
Ensuring smooth travel for business and leisure.



5 Km From -sarona Railway Station
Ideal for hassle-free railway access



6 Km From - AIIMS
Access to world-class healthcare facilities within minutes.



2.5 Km From - New Bus Stand (Bhatagaon)
Convenient connectivity for local and intercity travel.



6.5 Km From - Raipur Main Railway Station
One of the busiest railway hubs, ensuring smooth connectivity.





Layout
Plan

WHY CHOOSE VINAYAK GREENSCAPE?

Limited Edition Plots

Located in the heart of Bhatagaon, Raipur, Vinayak Green Scape offers seamless connectivity to prominent city landmarks, making everyday commuting effortless and convenient.

Large Plot Sizes

All plots are above 1800 sqft, offering ample space to build your dream home with a private garden, spacious rooms, and luxurious amenities.

Beautifully Landscaped Environment

Surround yourself with serene landscapes, lush greenery, and a meticulously maintained environment that promotes wellness and tranquility.

Future-Ready Infrastructure

State-of-the-art infrastructure ensures uninterrupted services, giving residents the benefits of modern urban living in a natural setting.

Prime Investment with High Returns

Bhatagaon is witnessing rapid infrastructural growth and development, making it an ideal location for property investment with high appreciation potential.

