

अयोध्या: WELCOME TO THE CITY OF LORD RAMA



Nestled on the tranquil banks of the Saryu River, Ayodhya is a city where history, spirituality, and devotion come together in perfect harmony. Revered as the birthplace of Lord Rama, it stands as one of India's holiest cities, drawing millions of pilgrims and seekers of peace each year. With its rich cultural heritage and timeless legacy, Ayodhya remains a living testament to India's spiritual essence—a place where the divine and the human coexist in sacred unity.

DESIGNING SPACES FOR A NEW युग

Aurika is a vision established to reshape spaces that inspires and enhances lives. At Aurika, we transcend mere construction, we are architects of aspirations, driven by a deep appreciation for the essence of building legacies. Our team of seasoned professionals with combined experience of over 70+ years, are from leading Financial institution and Real Estate development companies. They have constructed and sold more than 10 million sq. ft. of spaces. Using this wealth of industry knowledge, we combine professional skill with a tailored approach to create projects that reflect unique living and uphold our dedication to excellence, dependability, and timely completion.





Artistic Impression

वेदा, EXPERIENCE THE ESSENCE OF AYODHYA

Veda isn't just a stay, it's an experience. In the heart of Ayodhya, where spirituality and history converge, Veda offers a sanctuary of comfort and tranquility. From thoughtfully designed spaces to modern amenities, every detail is curated to enhance your journey. Experience first-class hospitality, top-tier facilities, and an atmosphere that seamlessly blends the sacred with absolute comfort. Whether you're embarking on a spiritual retreat or a short visit, Veda provides a haven for reflection and rejuvenation.

KEY INSIGHTS OF THE PROJECT

Plot Area- 3182 Sqm.

150 Serviced Suites

Shopping Complex

आगमन OF DIVINE BLESSINGS

Experience a grand entrance with a spacious drop-off area, welcoming you to a world of luxury and elegance. Every arrival feels like a divine blessing, setting the tone for what lies ahead.



EVERY DETAIL SPEAKS OF भव्यता

Enjoy a perfect blend of fine dining, leisure,
and convenience with premium amenities at
your fingertips.

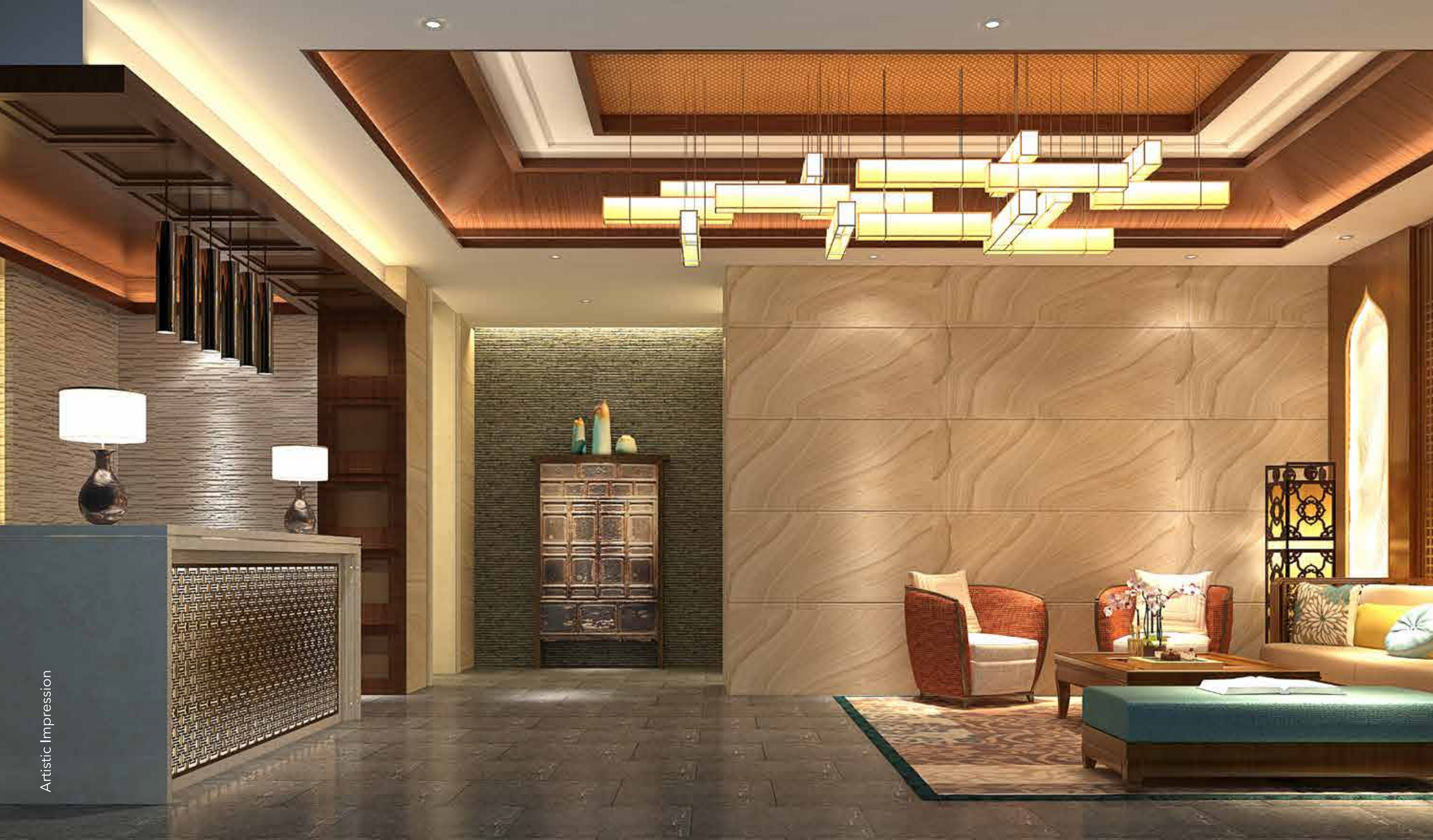


**PRIME
LOCATION**

**TIMELESS
ARCHITECTURE**

**SUSTAINABLE
DESIGN**

**EXQUISITE
AMENITIES**



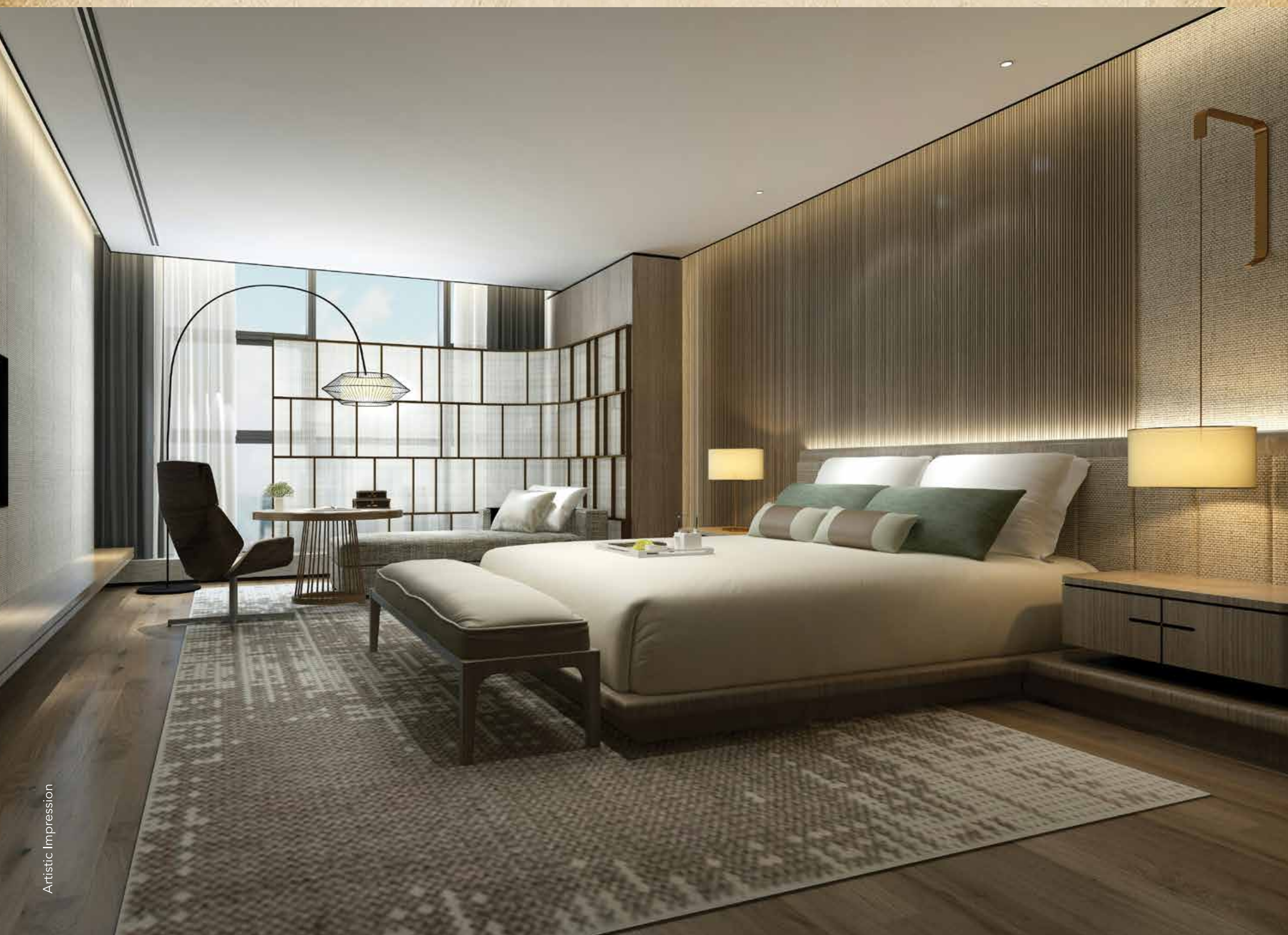
THE HEART OF YOUR अनुभव

Here, lobby and reception are designed to make you feel at ease from the moment you arrive. With comfortable surroundings and friendly service, every moment here is crafted to enhance your stay.



FEEL THE WARMTH OF दिव्यता

Premium Serviced Suites



Artistic Impression



Artistic Impression

Artistic Impression



Artistic Impression



Artistic Impression

EXPERIENCE THE स्वाद

All-Day Dining Restaurants



Artistic Impression

THE PERFECT PLACE FOR उत्सव

Multipurpose Hall



AWAKEN YOUR SPIRIT WITH प्राणायाम

Gym, Yoga, and SPA

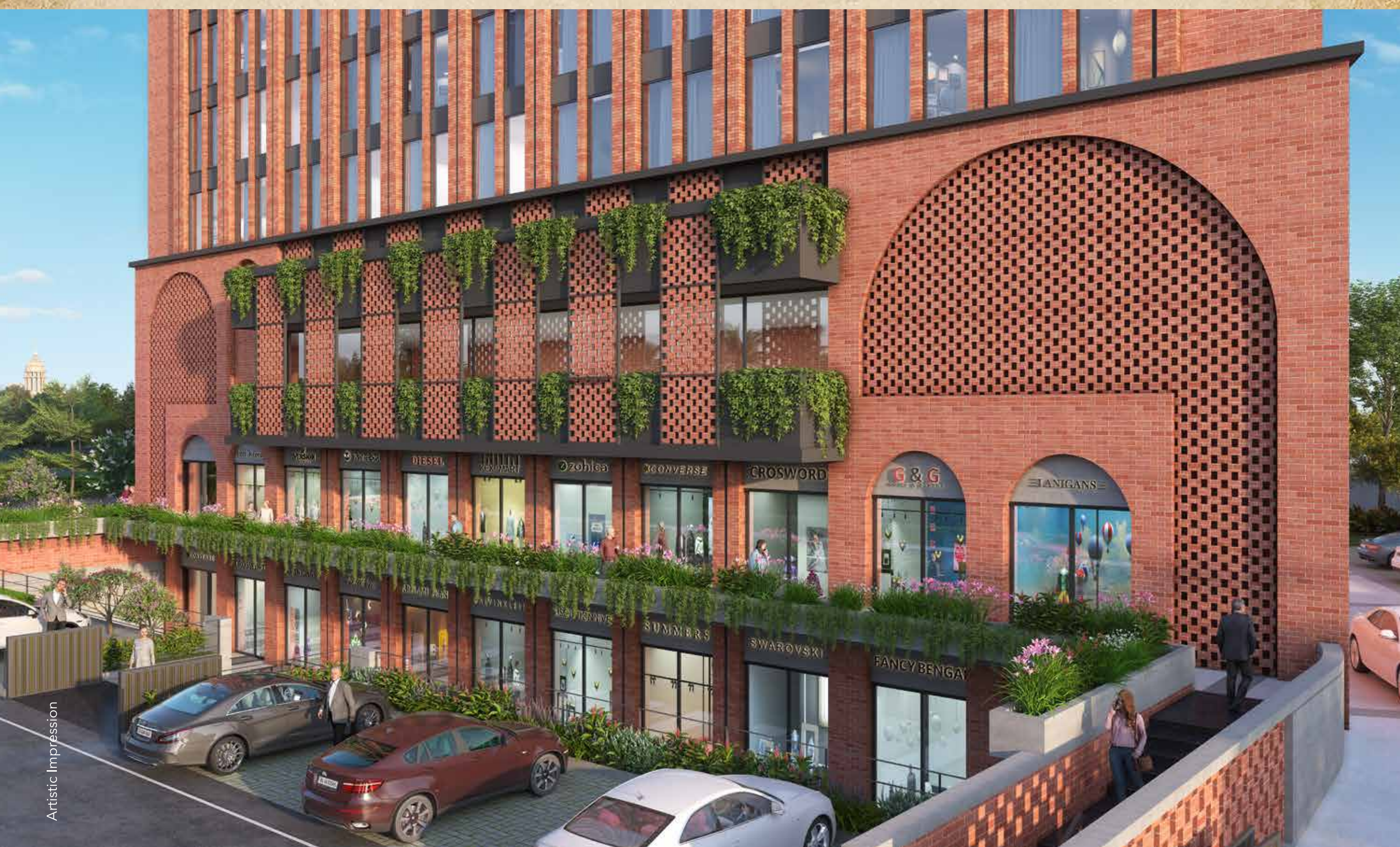


SIP AND SPLASH INTO उल्लास

Rooftop cafe and swimming pool

आकर्षण OF BESPOKE RETAIL

Experience the perfect blend of functionality and elegance, where spaces starting from 650 sq. ft. are designed to complement a vibrant and dynamic environment.



Artistic Impression



Artistic Impression



LAXMAN GRIHA
BEDROOM, TOILET

SUPER AREA	CARPET AREA
Sqm 58.00	Sqm 29.00
Sq. ft. 624.00	Sq. ft. 312.00



SITA NIWAS
LIVING ROOM, BEDROOM, TOILET

SUPER AREA	CARPET AREA	BALCONY AREA
Sqm 69.86	Sqm 34.93	Sqm 4.44
Sq. ft. 750.00	Sq. ft. 375.00	Sq. ft. 47.00



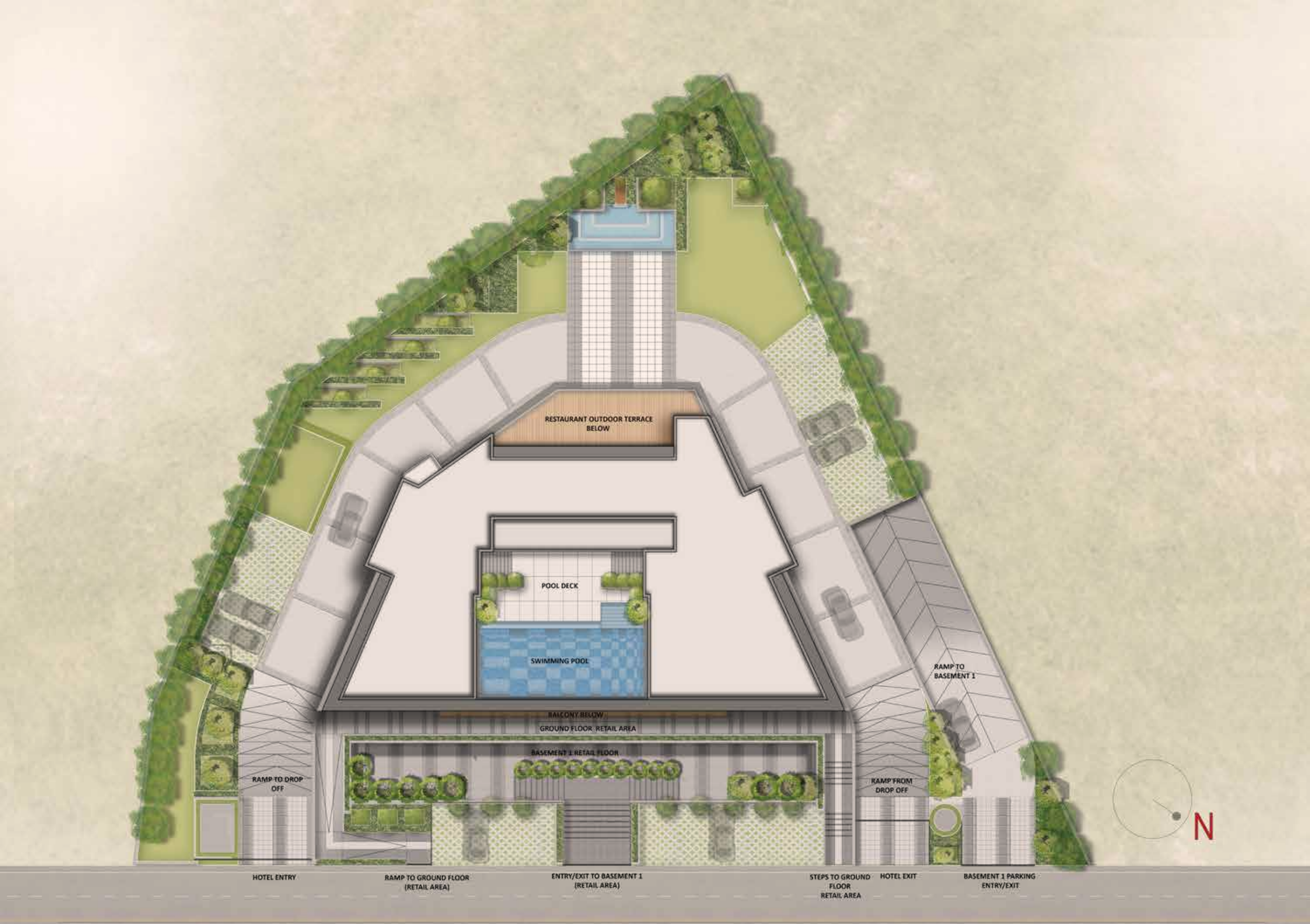
RAM BHAWAN
LIVING ROOM, BEDROOM, TOILET

SUPER AREA	CARPET AREA	BALCONY AREA
Sqm 74.40	Sqm 37.20	Sqm 4.44
Sq. ft. 800.00	Sq. ft. 400.00	Sq. ft. 47.00



RAM BHAWAN
TWIN BEDROOM, TOILET

SUPER AREA	CARPET AREA	BALCONY AREA
Sqm 74.40	Sqm 37.20	Sqm 4.44
Sq. ft. 800.00	Sq. ft. 400.00	Sq. ft. 47.00



GREEN SPACES FOR A बेहतर TOMORROW

जल SAVING FOR EVERYDAY USE

- Rainwater harvesting for groundwater recharge.
- Water-efficient plumbing for mindful usage.
- On-site wastewater treatment with STP.
- Recycled water for landscaping & flushing.
- Smart irrigation with sprinklers for efficiency.

EFFICIENT ऊर्जा FOR LESS WASTE

- Solar-reflective roofing for cooler spaces.
- Eco-friendly AAC/fly ash bricks for insulation.
- High-performance motors & pumps for energy savings.
- LED/CFL lighting for brighter, greener spaces.
- Automated lighting for reduced power waste.

प्राकृतिक IMPACT FOR A CLEANER SPACE

- EV charging stations for a cleaner tomorrow.
- Low ozone-impact refrigerants for fresher air.
- No-smoking zones for a healthier lifestyle.

THOUGHTFUL वास्तुकला FOR BETTER COMFORT

- Large windows that bring in sunlight naturally.
- Shaded balconies for reduced heat absorption.
- Inclusive accessibility features for all.

STRONG संरचना WITH BETTER MATERIALS

- Low VOC paints for cleaner indoor air.
- Locally sourced materials to reduce carbon footprint.



Artistic Impression



Artistic Impression



Artistic Impression



Artistic Impression



Artistic Impression



Artistic Impression

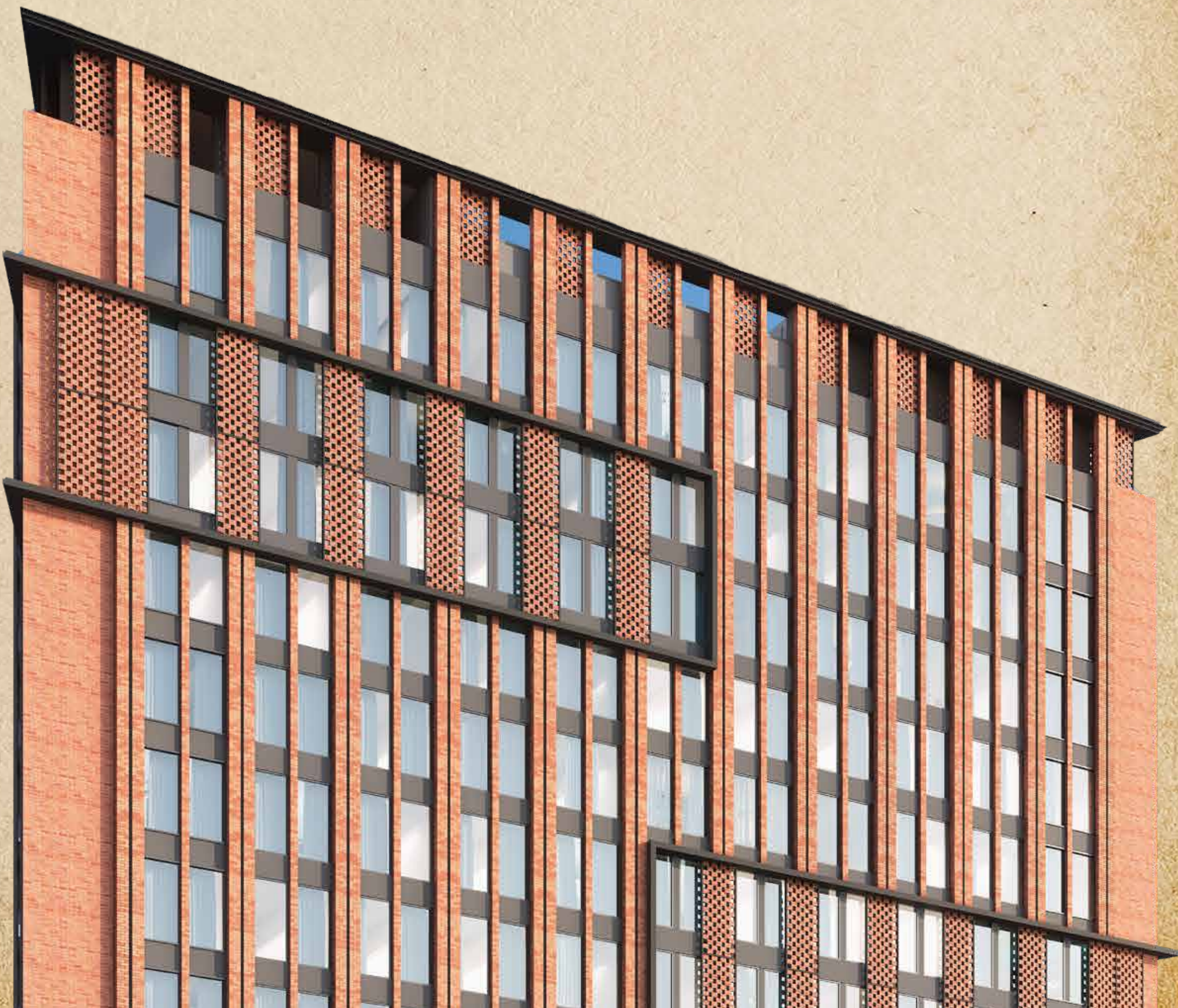
PROJECT विशिष्टताएँ

ROOM	
FLOOR	Laminated Wooden Flooring / Vitrified Tile / Marble Flooring
INTERNAL WALLS/ CEILING	Combination of Wallpaper & Acrylic emulsion paint
EXTERNALS WALLS	Combination of Brick cladding and Glazing / Exterior grade texture paint
DOOR	Modular/ Laminated/ Veneered Door Shutter

TOILET	
FLOOR	Vitrified tile/ Marble flooring
INTERNAL WALLS	Tile cladding upto dado height
CEILING	Water resistant false ceiling
CHINAWARE	Premium sanitary fixtures.
CP FITTING	Premium chrome plated fitting

MISCELLANEOUS	
HVAC	Air conditioning system with suitable diversity.
GENERATORS	DG power backup with suitable diversity.
RAILING	Mild Steel/ Glass railing as per Architect's design
LIFT	High speed elevators to access all floors
PLUMBING	As per standard practice, all internal plumbing in GI/ CPVC/ Composite. All external in CI/ UPVC.
ELECTRICAL	All electrical wiring in concealed conduits; provision for adeqaute light & power points. Moulded modular plastic switches and protective MCB's.
FURNISHING	Room furniture and toilet accessories as per operator's specification

Note: Company reserves its right to change the area and specification without prior notice; if the area differs at the time of possession, cost would be adjusted upwards or downwards, as the case may be, with variation in area not exceeding 3%.



LOCATION MAP



RAM JANAMBHOOMI
19 MINS (6.6 KM)

SURAJ KUND
05 MINS (1.7 KM)

NAYA GHAT
22 MINS (8.8 KM)

GUPTAR GHAT
20 MINS (6.1 KM)

AWADH MALL
18 MIN (8.2 KM)

CHOWK MARKET
11 MIN (3.6 KM)

AYODHYA DHAM
BUS STAND
18 MIN (8.4 KM)

LATA MANGESHKAR
CHOWK
15 MIN (3 KM)

AIRPORT
19 MIN (10 KM)

HANUMAN GARHI
16 MIN (6.3 KM)

AYODHAYA DHAM
RAILWAY STATION
14 MIN (6 KM)



PRASOON CHAUHAN

FOUNDER & CEO

An industry veteran with 20+ Years of experience across Real Estate Financing/Development and Consulting. He holds an MBA degree from IMT, Ghaziabad with short term program at London Business School. He has spent more than 13+ years with two of the finest private sector banks of the country namely ICICI Bank and Yes Bank, where he scaled up corporate finance portfolio from USD 50 Million to USD 2 Billion across Real Estate, Hospitality, Healthcare & Education sector as President & MD. Prior to founding Aurika Residences, he co-founded ATS HomeKraft which was a JV for mid income housing development between HDFC Capital, ATS Group and himself. Under his leadership, Homekraft had projects under execution > 10 million sq. ft. and sold more than 1900+ units.





AURIKA DEVELOPERS LLP

RERA Registration No. UPRERAPRJ367395/03/2025 | www.up-rera.in

Site Office: Gata No. 228, 229 & 230, Kudha Keshavpur, 14-Kosi Parikrama Marg,
Darshan Nagar, Ayodhya- 224123 Uttar Pradesh

Registered Address: Unit No. OF-1102 Plot C-3 E-1 Gulshan One29 Sec-129,
Chhaprauli Bengar, Noida- 201304 Uttar Pradesh

+91 8882988847 | veda.crm@aurikahomes.com | www.aurikahomes.com

Design, Architecture, Landscape & Interiors	Structure	MEP Services	Hotel Back Office Design	Design Support
Confluence	OPTIMUM DESIGN	V Consulting	OLD PALS HOSPITALITY COMPLETE SOLUTIONS	DS

Disclaimer: The content and visuals in this advertisement are for illustration purposes only and are not to scale. This does not constitute a legal offer or form part of any legally binding agreement. Developer may change, delete, add to, or otherwise amend information contained here as per prevailing government norms without notice. #1 sq. mtr. = 10.764 sq. ft., 1 sq. mtr. = 1.19599 sq. yards. Our official website is www.aurikahomes.com and email address is veda.crm@aurikahomes.com. We do not hold any responsibility for any information provided on any other website/email communication apart from the official one.