



Site: Maitri Elevate, Beside EVM Building, Opp. SBI Bank,
Motera – Koteswar Junction, Motera, Ahmedabad – 380005

Office: Gayatri House, Nr. Maitri Avenue, Ashok Vihar,
Sabarmati – Gandhinagar Highway, Motera, Ahmedabad – 380005

Contact: 98250 82318 | 98795 73777 | **Website:** www.gayatriinfra.com

Architects:
Apurva Amin

Structure Engineer:
N K Shah

MEP Consultant:
Atomep Enteam Pvt. Ltd.

RERA No.: PR/GJ/AHMEDABAD/AHMEDABAD CITY/AUDA/MAA12162/180823
For More Detail: www.gujrera1.gujarat.gov.in

elevate
by maitri

3/4 BHK Athleisure Homes

In the heart
of Motera...

...out of this world

Elevate is here to add life to Motera Give a lift to your lifestyle of contemporary era, We are building a happening world, just for you, An experience, an event, a life, that's brand-new!!!



Motera – The Planned Area



World-famous Landmark –
Narendra Modi Stadium



Infrastructure

Much more organized and planned in detail



Connectivity

Close to Airport, Futuristic Bullet Train station, Metro, BRTS, River Front, Engineering College, Lake & Garden, knowledge Corridor, Giftcity, Narmada Main canal Walk and other areas of the city



Greenery

The AQI Index is under control due to lush green surroundings



Sports

If everything goes as planned, the area will host 2036 Olympics



The Elevated Lifestyle

For the first time ever, Maitri introduces the concept of Athleisure – a life that is conceptualized around Athletics and leisure. Maitri Elevate is Motera's finest residence that has been intelligently planned and crafted with precision.

With carefully curated amenities, we have ensured a perfect work-life balance for you and your family. The avant-garde 40,000 sq. ft. podium has everything that will help you meet your fitness and happiness goals, effortlessly. Centrally located, the residence helps you steal moments for your family by cutting down on travelling.

If you are looking for a landmark that makes your life complete in every sense, then this is the place. Every little thing has been placed here to build a coherent lifestyle and a close-knit community. With Maitri Elevate, we are here to give rise to a new perception of life, fitness, and lifestyle.





Optimum Space for Everyone, Everything

Maitri Elevate brings to you 3 and 4 Bedroom Spacious Residences that are characterized by the sheer space and level of luxury. The spaces comprise vast living rooms to let you host get-togethers for your friends and family. We have meticulously designed kitchen to let all the expert cooks in your family experiment with food and flavours. At Maitri Elevate, bedrooms are designed to unwind and rejuvenate for another eventful day ahead.

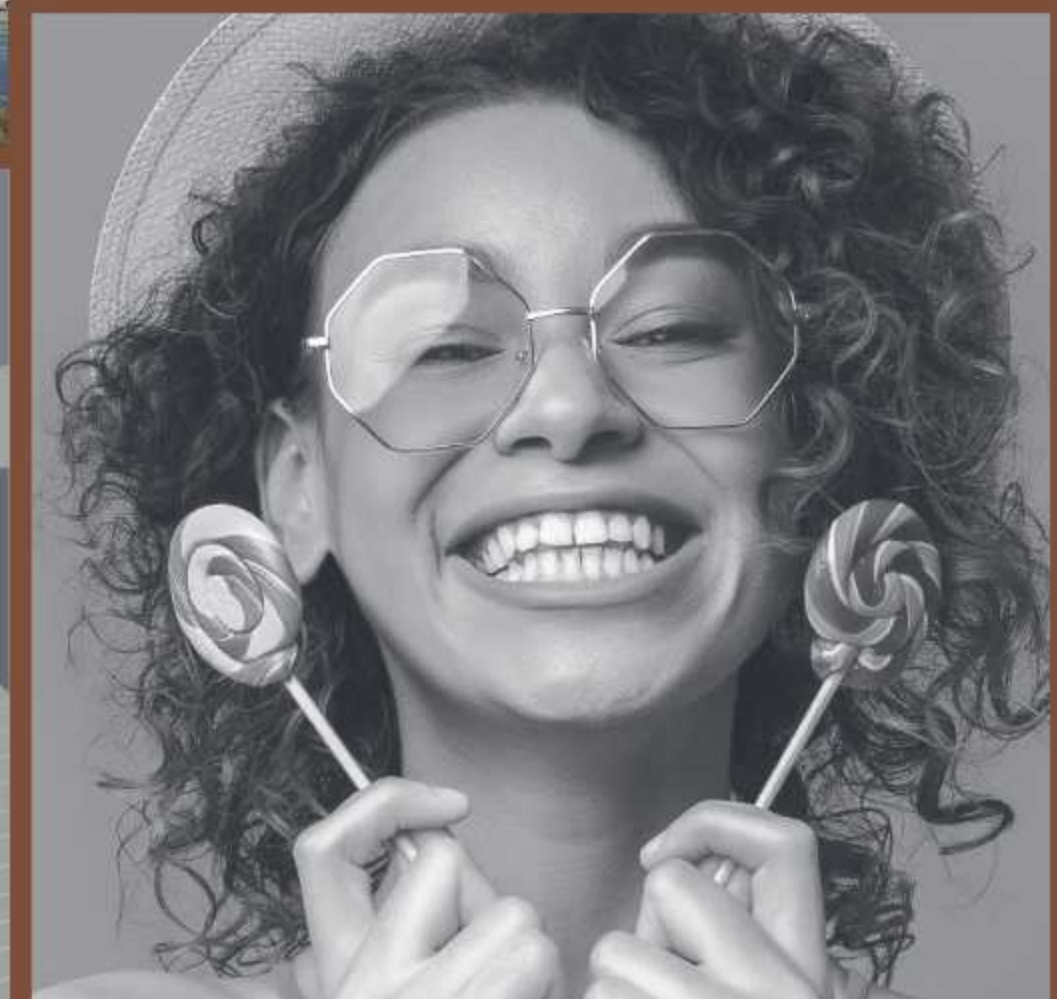
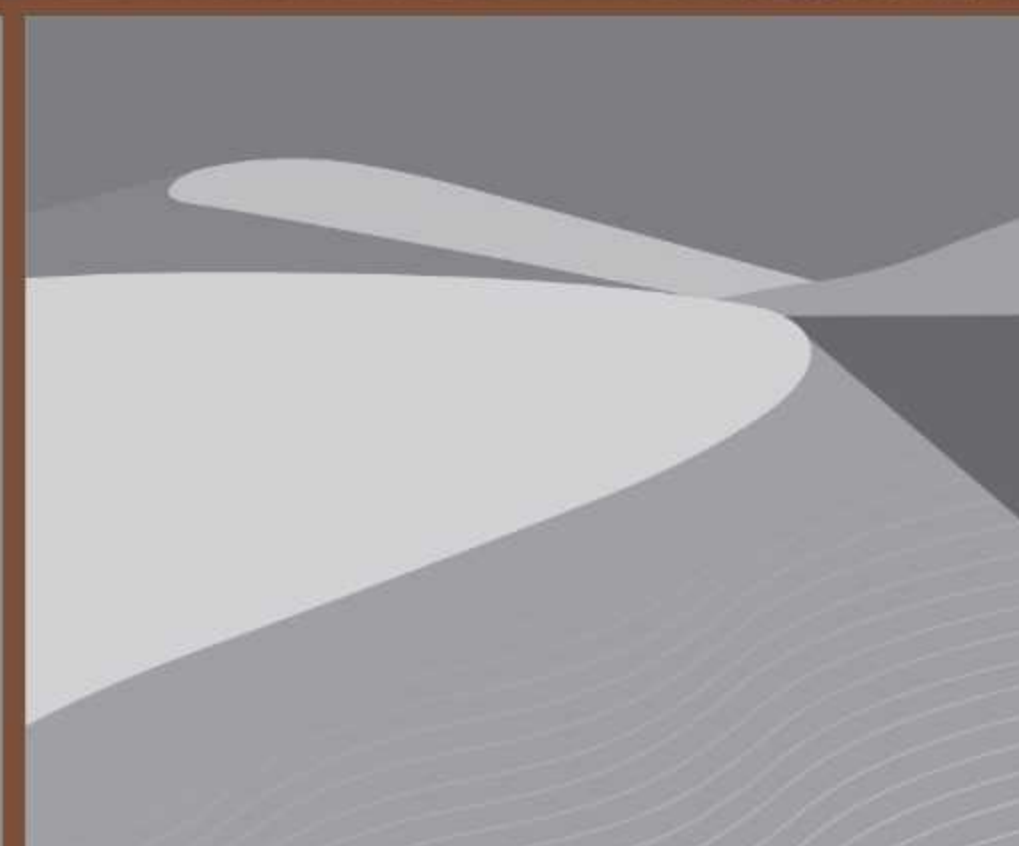


3 and 4 Bedroom Residences

13 Floors, 4 Towers

Commercial Shops

Gated Community



Welcome to a world within the city

Modern-day life comprises of running from one place to the other, in a bid to learn, enjoy, and unwind. However, at Maitri Elevate, we have created an exclusive world within the residence, just as you wish for. Everything and every service that you require are here for your convenience. Experience the luxury of time, a rarity in this age and era.



Entrance Lobby



The Privilege of the Podium

Just step out of your home and bask in the glory of well-crafted amenities. We are living in the age when life has become a rat race. Amid trips related to work, 9 to 9 routine, and a long list of social do's, you are bound to lose your identity. We bring to you a host of amenities that we have curated based on your lifestyle. What more! We have chosen sports amenities to bring out the athlete in you and your family. With this, your children will not have to run from one academy to the other to learn sports and games.

Avant-garde
40,000+ sq. ft. Podium



Board Games Room



Indoor Games



Gymnasium



Yoga



Home Theatre




Infinity Pool



Community Sit-outs



Children Play Zone

A high-angle, wide shot of a modern apartment complex's central courtyard. The courtyard is a lush green oasis, featuring a long, rectangular swimming pool with a dark blue tile interior. To the left of the pool is a covered lounge area with a dark roof and wooden deck, furnished with brown leather sofas and armchairs. To the right of the pool is an open deck area with a dark wooden floor, also furnished with brown leather seating and two large, light-colored patio umbrellas. The courtyard is surrounded by tall, multi-story apartment buildings with a modern, dark facade and numerous balconies. The landscaping includes various trees, shrubs, and bamboo plantings, creating a serene and private atmosphere.

Gazebo
Sit-outs

Open Deck

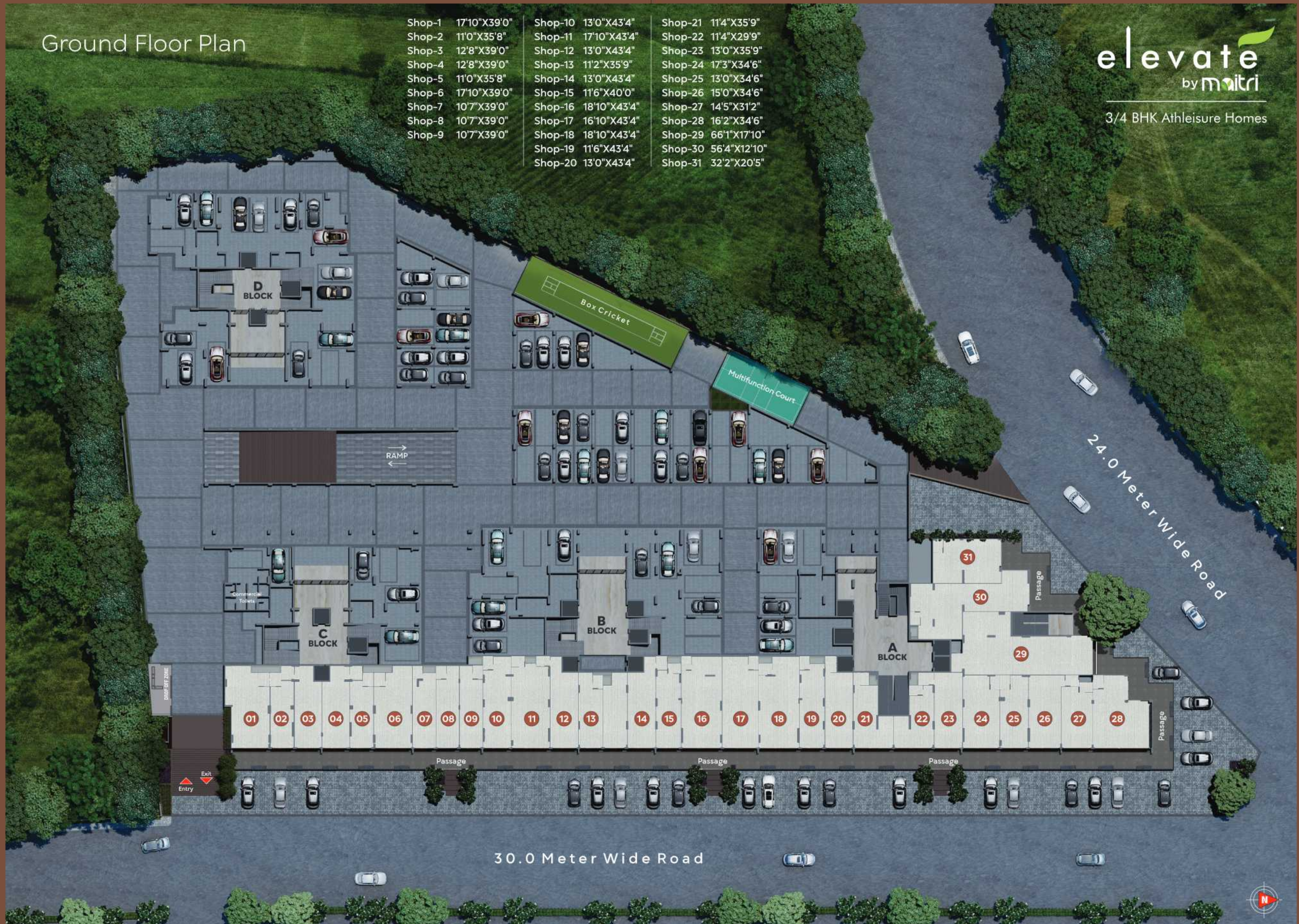
Like-minded people
In a dream-like ambiance

Ground Floor Plan

Shop-1	17'10"X39'0"	Shop-10	13'0"X43'4"	Shop-21	11'4"X35'9"
Shop-2	11'0"X35'8"	Shop-11	17'10"X43'4"	Shop-22	11'4"X29'9"
Shop-3	12'8"X39'0"	Shop-12	13'0"X43'4"	Shop-23	13'0"X35'9"
Shop-4	12'8"X39'0"	Shop-13	11'2"X35'9"	Shop-24	17'3"X34'6"
Shop-5	11'0"X35'8"	Shop-14	13'0"X43'4"	Shop-25	13'0"X34'6"
Shop-6	17'10"X39'0"	Shop-15	11'6"X40'0"	Shop-26	15'0"X34'6"
Shop-7	10'7"X39'0"	Shop-16	18'10"X43'4"	Shop-27	14'5"X31'2"
Shop-8	10'7"X39'0"	Shop-17	16'10"X43'4"	Shop-28	16'2"X34'6"
Shop-9	10'7"X39'0"	Shop-18	18'10"X43'4"	Shop-29	66'1"X17'10"
		Shop-19	11'6"X43'4"	Shop-30	56'4"X12'10"
		Shop-20	13'0"X43'4"	Shop-31	32'2"X20'5"

elevate
by maitri

3/4 BHK Athleisure Homes



Podium Floor Plan

Features & Amenities

elevate
by **maitri**

3/4 BHK Athleisure Homes

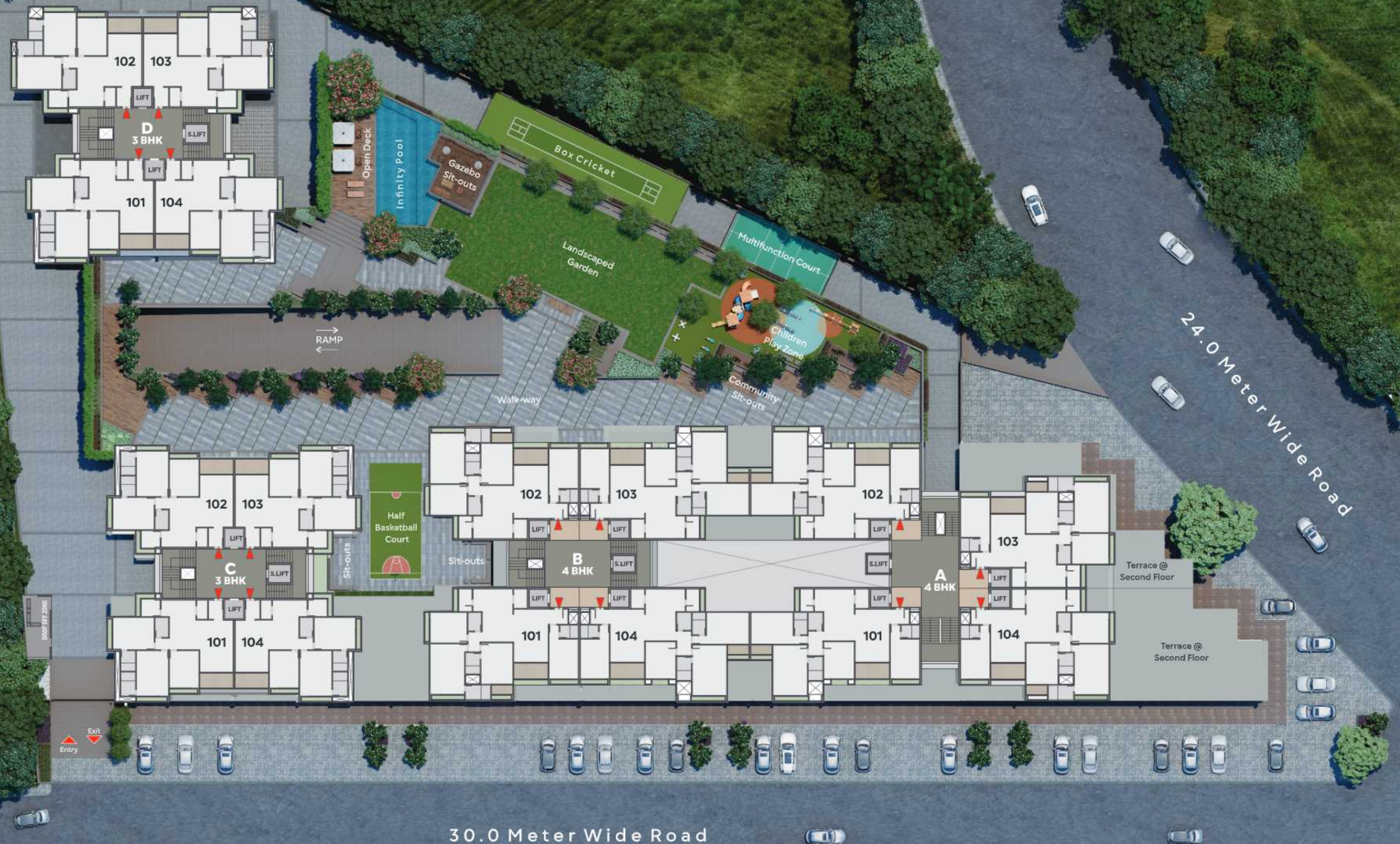
- | | | | | | | | | |
|----------------------------|-------------------------|-----------------------------|-------------------------------|-----------------------|---------------------|---------------------------|-------------------------|--------------------------|
| 01
Indoor Games | 02
Board Games | 03
Half Basketball Court | 04
Gymnasium | 05
Walk-Way | 06
Yoga | 07
Multi Function Hall | 08
Community Sit-out | 09
Children Play Zone |
| 10
Multi Function Court | 11
Box Cricket | 12
Landscaped Garden | 13
Senior Citizen Sit-outs | 14
Gazebo Sit-outs | 15
Infinity Pool | 16
Open Deck | | |
| | 17
Change Room (M/F) | 18
Sit-outs | 19
Home Theater | 20
Drop Off Zone | | | | |



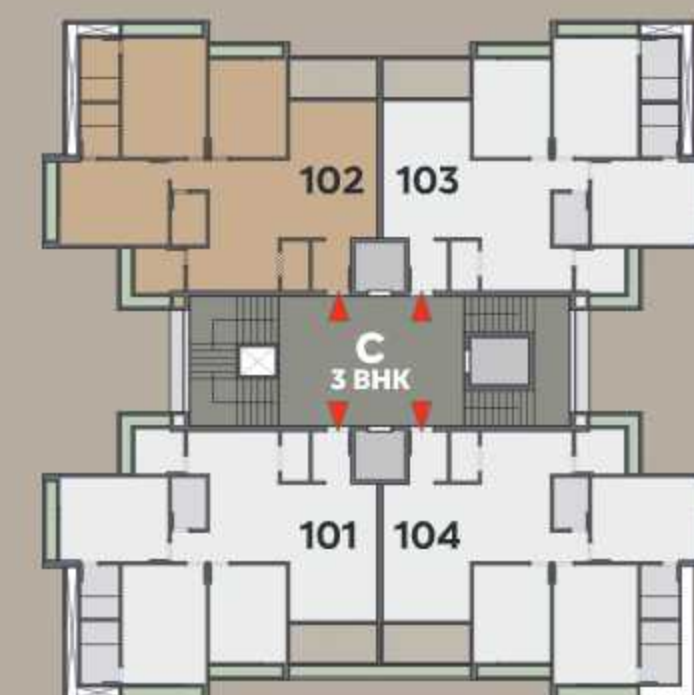
Typical Floor Plan

elevate
by mitri

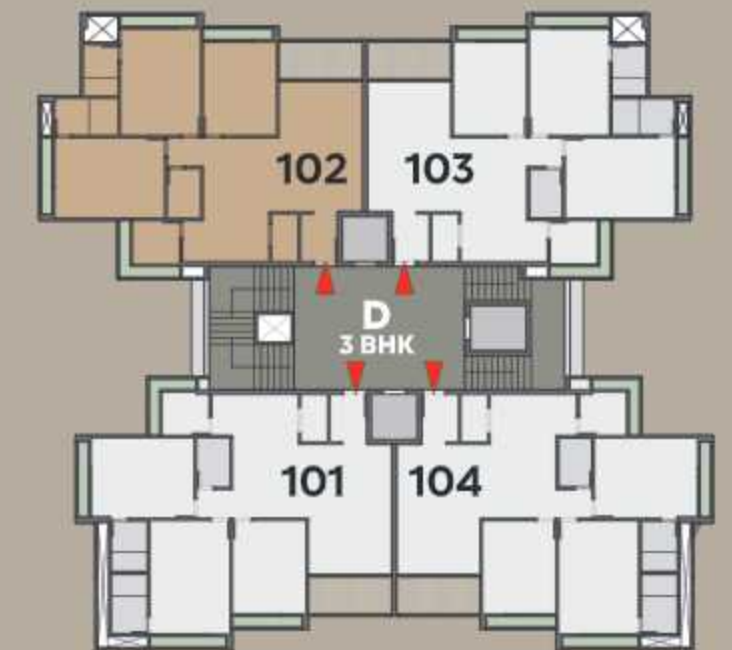
3/4 BHK Athleisure Homes



3 BHK Unit Plan Type-1 (C - Block)



3 BHK Unit Plan Type-2 (D-Block)





Dining Area



Drawing Room

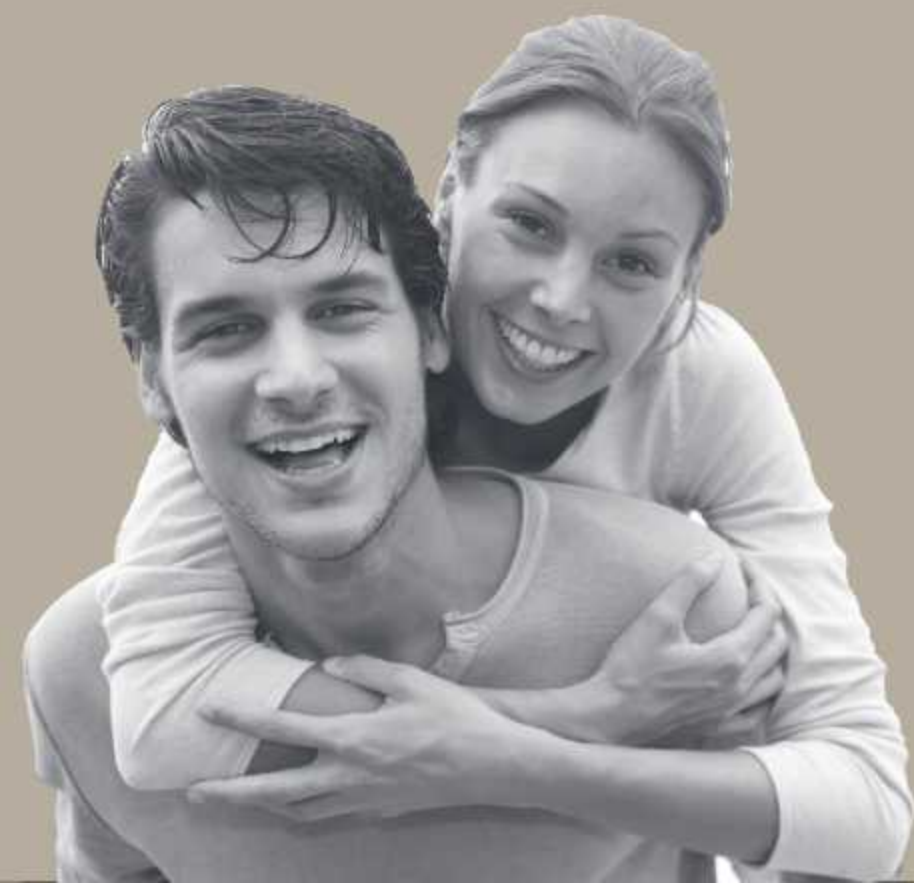
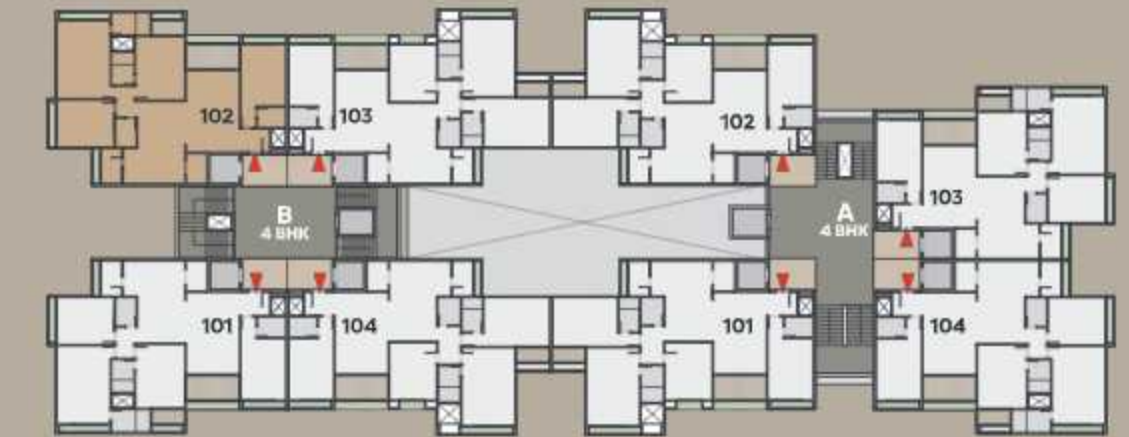


Master Bedroom

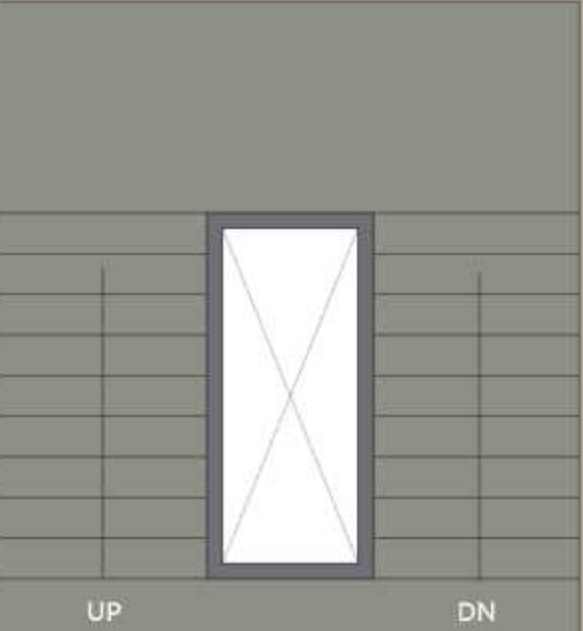
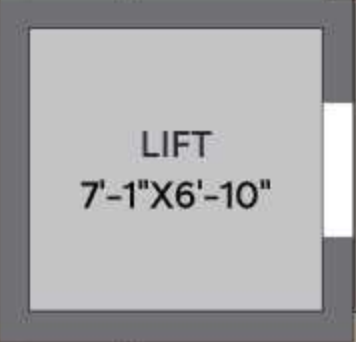
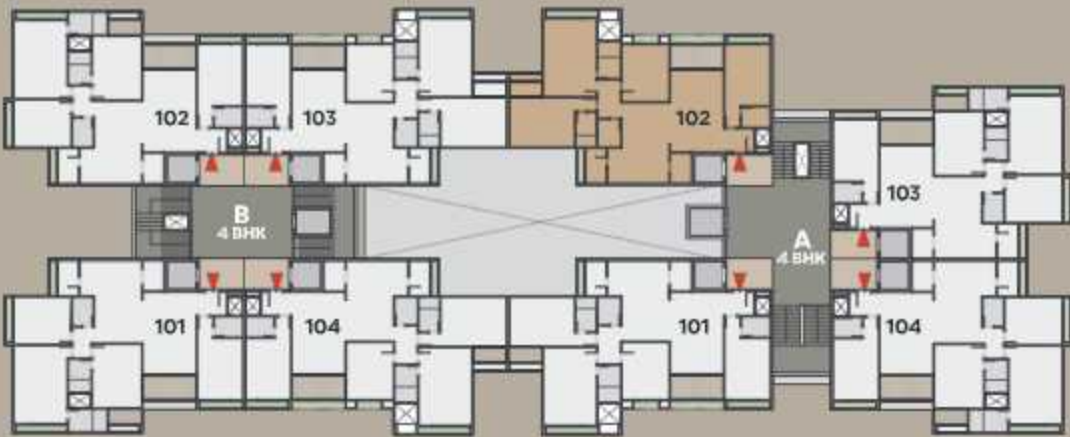


Kitchen

4BHK Unit Plan Type-2 (B-Block)

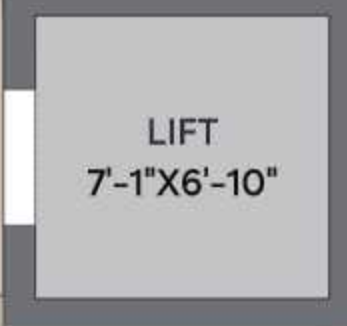


4BHK Unit Plan
Type-1 (A-Block)



Foyer
25'-7"X19'-6"

Foyer
14'-0"X12'-6"



Breathe,
You are opting for
a Green Building



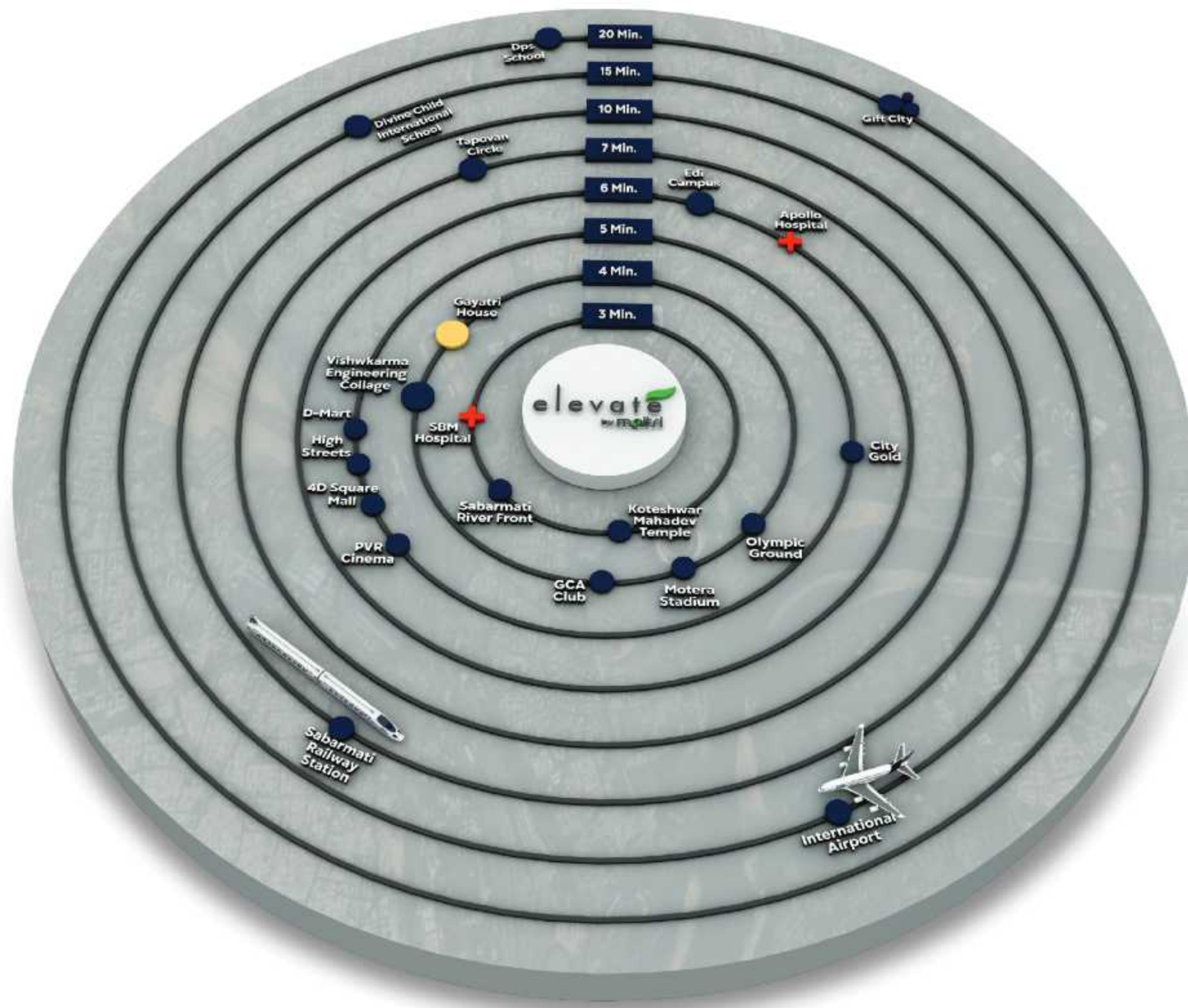
Specifications

Structure	: Earthquake resistance RCC Frame Structure
Flooring	: Vitrified tiles in bedrooms Wooden Finished Vitrified Tiles in one master bedroom Vitrified tiles in drawing and dining room Vitrified / rustic tiles in balcony
Window	: Sliding aluminium section window
Door	: Main door - wooden flush door with one side polished veneer Internal doors-flush doors with oil paint
Kitchen	: Granite platform with dado of vitrified / ceramic tiles Stainless steel sink Vitrified tiles in floor Vitrified / Ceramic tiles in wash yard
Inside Finish	: Putty Finish
Outside Finish	: Acrylic / Apex Paint
Sanitary Ware	: Wall Hung Water Closet Wall Hung / Stone counter top Basin
Toilet fittings	: Chrome Plated Fittings
Toilet flooring	: Dado Vitrified / Ceramic tiles up to lintel level Vitrified / Ceramic tiles in flooring
Plumbing	: All Water Supply Lines shall be ISI marked CPVC pipes, Drainage Lines and Storm water drain pipes shall be in PVC.
Elevators	: High Speed Automatic elevators.
Electrics	: ISI Modular Switches ISI Make Wires, MCB/ELCB

Know Your Neighborhood



Scan QR Code
to Get Location



Maitri Elevate is an address that is both nature and city. just a 15-minute drive from Sabarmati Railway Station and quietly tucked away with the tranquil Sabarmati River front just within sight, it is a symphony of flourishing greenery, calming waters, clear blue skies, and lively city lights.

