



**UNIWEST  
AERO HUB**

**SUSTAINABLE FUTURISTIC BUSINESS & LIFESTYLE SPACES**

**SECTOR 22D, YAMUNA EXPRESSWAY**

**RERA NO.- UPRERAPRJ621735/05/2025**





Artistic Image





Artistic Image



# ABOUT US



Artistic Image

With the lineage of over 35 years, our Director Shri Sanjeet Singh started his independent venture “Uniwest Infratech Pvt Ltd” in 2011, keeping in mind the futuristic approach towards environment and designing sustainable green spaces and efficient use of resources including preservation of water through an efficient water harvesting system and waste management.

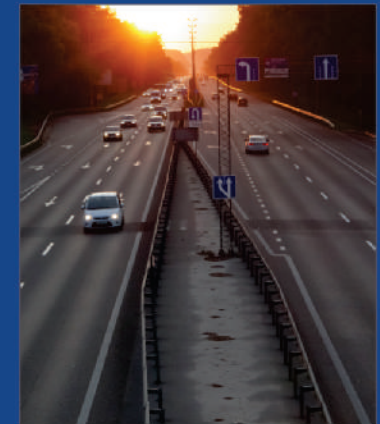
Uniwest with its innovative and customer centric approach is ready to become one of the most dynamic Real Estate Developer. The Company is built on the values of ethical governance, transparency, commitment and passion for excellence.

With a diverse portfolio of Commercial and mixed land use development, the company focuses on customer satisfaction through highest standards of design and construction.

Uniwest with its debt free status shows financial strength and stability of operations. Healthy financial position helps to operate smoothly even in the face of challenging times. The company's strong financial position is built through careful budgeting, cash flow management and a focus on controlling expenses while optimizing revenue streams.



# PROJECT HIGHLIGHTS



- The Project is at excellent location at Yamuna Expressway, just 10 min. drive from Noida International Airport.
- The only loop facilitates the easy access to the **UNIWEST AERO HUB** from Yamuna Expressway.
- The Project is surrounded by Residential complexes, Schools and High-rise buildings.
- The Project is designed to cater from your basic day to day requirements to exclusive requirements.
- The project will have three latest spacious lifts for best in class experience.
- The Project offers Commercial Shops, Food Courts, and Furnished Commercial Suites/Studios.
- Close to **Educational and Healthcare** facilities fetching more footfall.
- Project is close to proposed Monorail, Metro, ISBT, Film City and Night Safari.



# EXCLUSIVE AMENITIES



**Prime Location At The  
Yamuna Expressway**



**Surrounded By  
Greenery**



**Project is located  
at the only loop, for  
easy access to & from  
Yamuna Expressway**



**Large Car Parking  
space**



**Close To Noida  
International Airport**



**Earthquake Resistant  
Building**



**24\*7 Power Backup**



**24\*7 Camera  
Surveillance**



## NEAR - BY DESTINATIONS

- NOIDA INTERNATIONAL AIRPORT
- GAUTAM BUDH UNIVERSITY
- NOIDA INTERNATIONAL UNIVERSITY
- STELLAR BUSINESS PARK
- BUDDH INTERNATIONAL CIRCUIT
- IT - BPO
- VIVO

## UP - COMING PROJECTS

- PATANJALI
- FILM CITY
- INFOSYS
- AVERY DENNISON
- SAMSUNG
- ELECTRONIC MANUFACTURING  
CLUSTER





## RETAIL OUTLETS FOR EXCLUSIVE BRANDS

The High-Street will be developed to make it a hub for shopping, food, entertainment, leisure, outdoor public activities, making it the one place where everything is available.



Artistic Image



## LIFESTYLE AT YOUR DOORSTEP WITH STUDIOS / SUITS

UNIWEST AERO HUB also features modern and spacious studios / suits, integrated within the lifestyle center. These studios are ideally suited for transit passengers travelling via the Noida International airport and visitors from Agra, Lucknow or the national capital region (NCR). The inclusion of these studio apartments transforms UNIWEST AERO HUB into a holistic lifestyle center, offering a hybrid mix of retail, F&B, recreation. This unique combination ensures that UNIWEST AERO HUB caters to a wide range of needs and preferences, making it a preferred destination for a diverse clientele.







# FOOD COURTS

For Celebration,  
Global Flavors  
and to discover a  
new opportunity  
in food business



Artistic Image





 **UNIWEST**  
AERO HUB

**RESTAURANT**

**"PERFECT SPACE WHERE YOUR  
CULINARY DREAMS CAN THRIVE  
AND YOUR BUSINESS CAN FLOURISH."**



Artistic Image



# LOWER GROUND FLOOR



UNIWEST AERO HUB

LOWER GROUND FLOOR PLAN

## COMMERCIAL SHOP

Shop No	1	2	3	4	5	6	7	8	9	10	11	12	12A	14	15	16	17	18
Super Area (Sqft)	1106	600	600	600	600	590	486	456	456	434	600	600	600	600	590	602	596	972



# UPPER GROUND FLOOR



UNIWEST AERO HUB

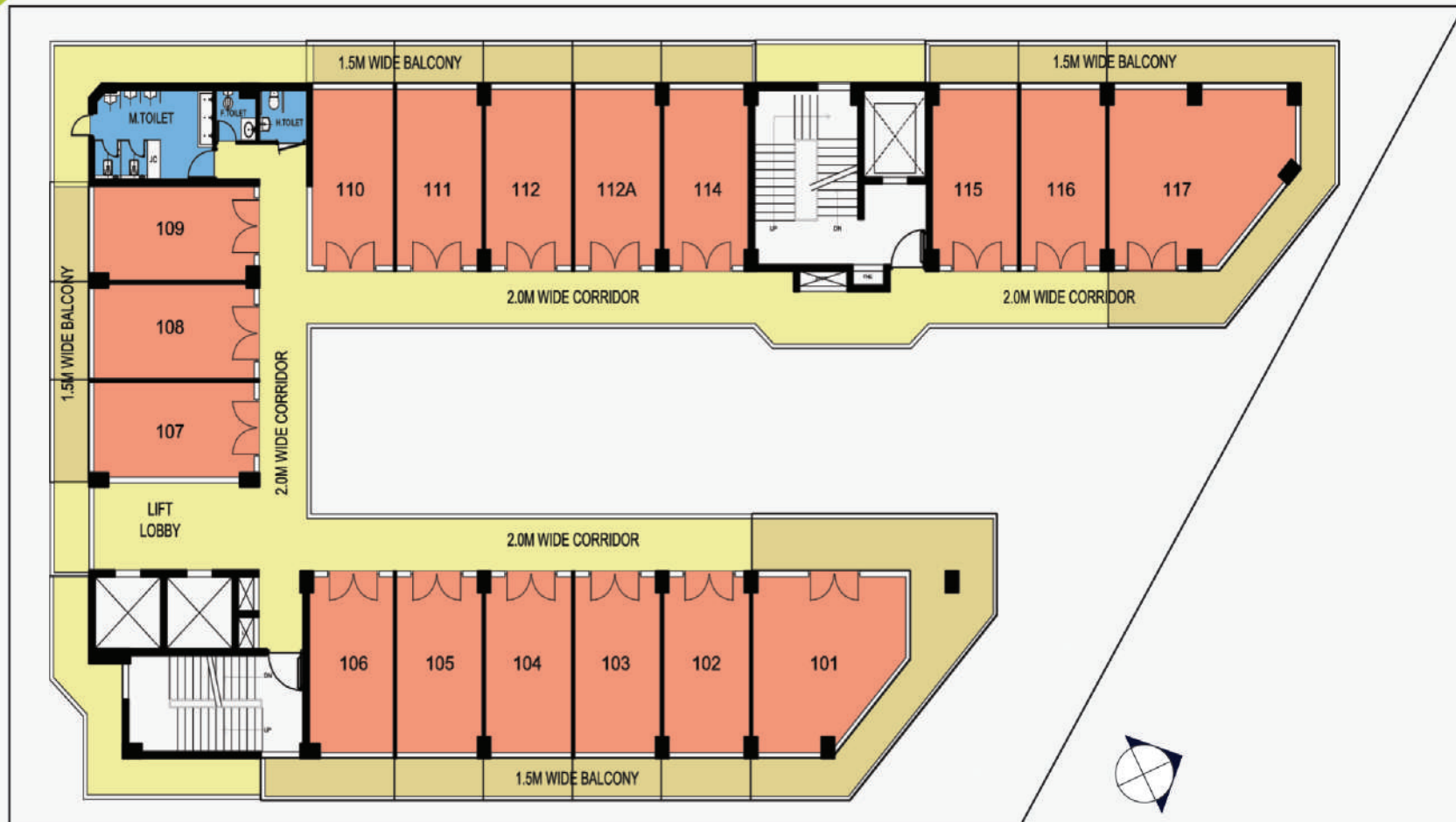
UPPER GROUND FLOOR PLAN

## COMMERCIAL SHOP

Shop No	1	2	3	4	5	6	7	8	9	10	11	12	12A	14	15	16	17
Super Area (Sqft)	794	462	462	462	462	452	494	462	462	462	462	462	462	456	460	460	874



# FIRST FLOOR



UNIWEST AERO HUB

FIRST FLOOR PLAN

## COMMERCIAL SHOP

Shop No	1	2	3	4	5	6	7	8	9	10	11	12	12A	14	15	16	17
Super Area (Sqft)	760	477	477	477	477	466	510	477	477	477	477	477	477	470	474	474	938









### THIRD FLOOR PLAN

## SUITES / STUDIO APARTMENT

[illegible]





FOURTH FLOOR PLAN

[illegible]





FIFTH FLOOR PLAN

[illegible]



## SIXTH FLOOR



## UNIWEST AERO HUB

### SIXTH FLOOR PLAN

## SUITES / STUDIO APARTMENT

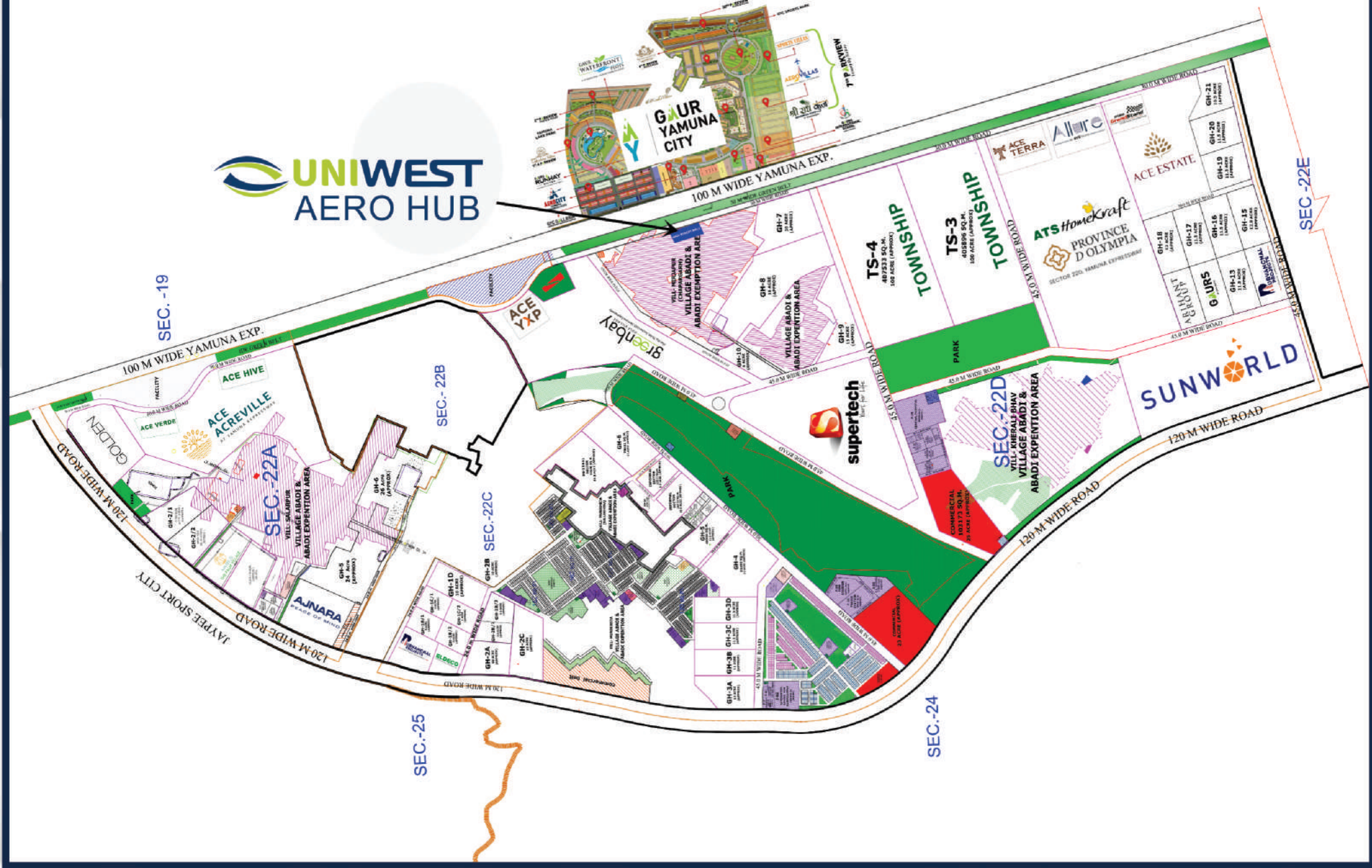
[illegible]



## SUITES / STUDIO APARTMENT

AREA : 475 Sq. Ft.







Artistic Image



# DELIVERED PROJECT



Artistic Image





**SECTOR 22D, YAMUNA EXPRESSWAY**

[www.uniwestaerohub.com](http://www.uniwestaerohub.com)  
Email: [info@uniwestaerohub.com](mailto:info@uniwestaerohub.com)

[www.up-rera.in](http://www.up-rera.in)



**RERA NO.- UPRERAPRJ621735/05/2025**

Legal Disclaimer: The Plans, Image and facilities shown in the brochure are merely indicative in nature (not a legal offering) and are subject to variations and modifications at the sole discretion of the company or the competent authority. the project is registered under the **UPRERA** .