

*Live long. Live well.*





*Introducing You To*  
**JMS Group**  
**Silver Living**

\*Artistic Impression

\*Artistic Impression

# The Holy Peepal

*Abode of Lord Brahma, Lord Vishnu and Lord Shiva*

The sacred shelter under which Gautam Buddha and Lord Mahavira attained enlightenment.

The epitome of longevity, wellness and traditional therapy, believed to ward off evil.

With a heart-shaped leaf that carries some of India's most treasured scriptures and manuscripts.

A glorious symbol for longevity, self-reliance and selfless service to life.

The inspiration behind Silver Living – our holistic senior living haven.



You've conquered the challenges of life

Your children are *settled*

Time to put life on a *relaxed mode*





\* Artistic Impression



Life is *exciting*, as long as we  
have the *will to wake up* and grab a  
*piece of the action.*



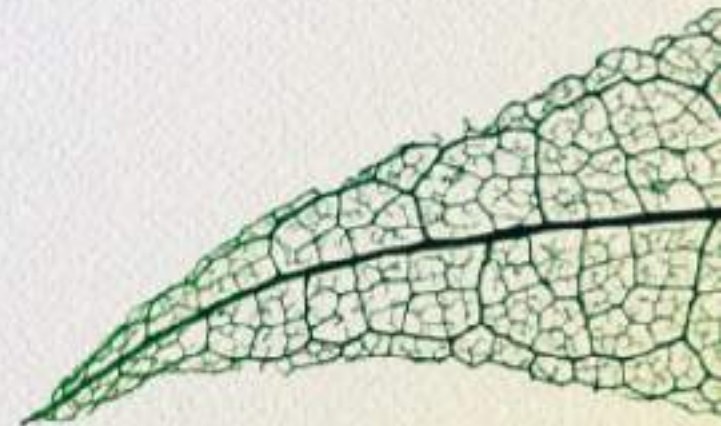


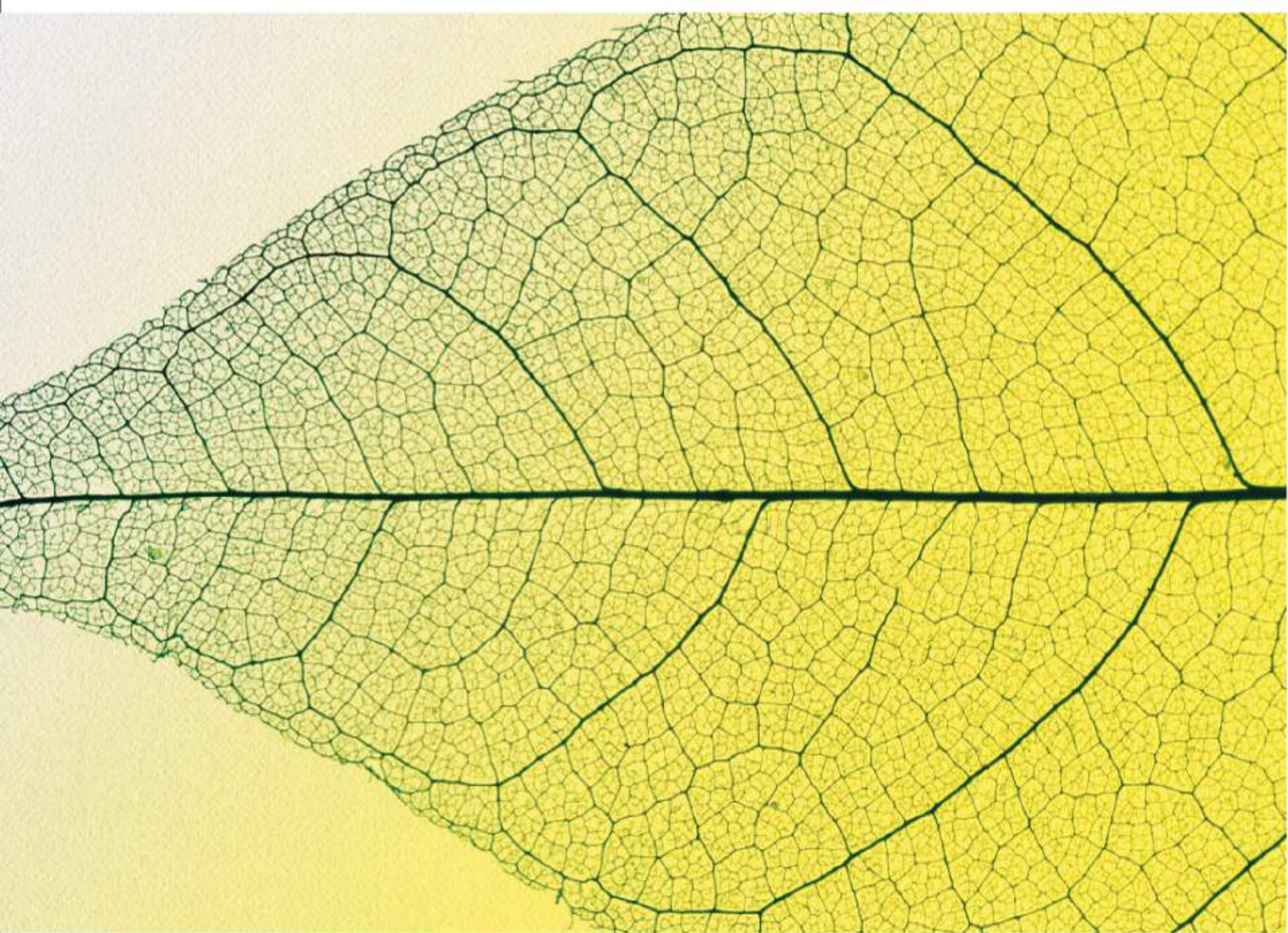
\* Artistic Impression



At Silver Living, 4 Cs define  
our overall residential experience

*Care, Comfort, Cure,  
Community Living.*








\* Artistic Impression



Life at Silver Living feels like a *never-ending vacation.*

It's here that you forget your worries and focus on *enjoying life.*

Whether it's lounging by the pool, taking leisurely walks in the beautifully landscaped open areas, or simply soaking in the tranquil surroundings, Silver Living offers the perfect blend of *comfort, care,* and *serenity.*





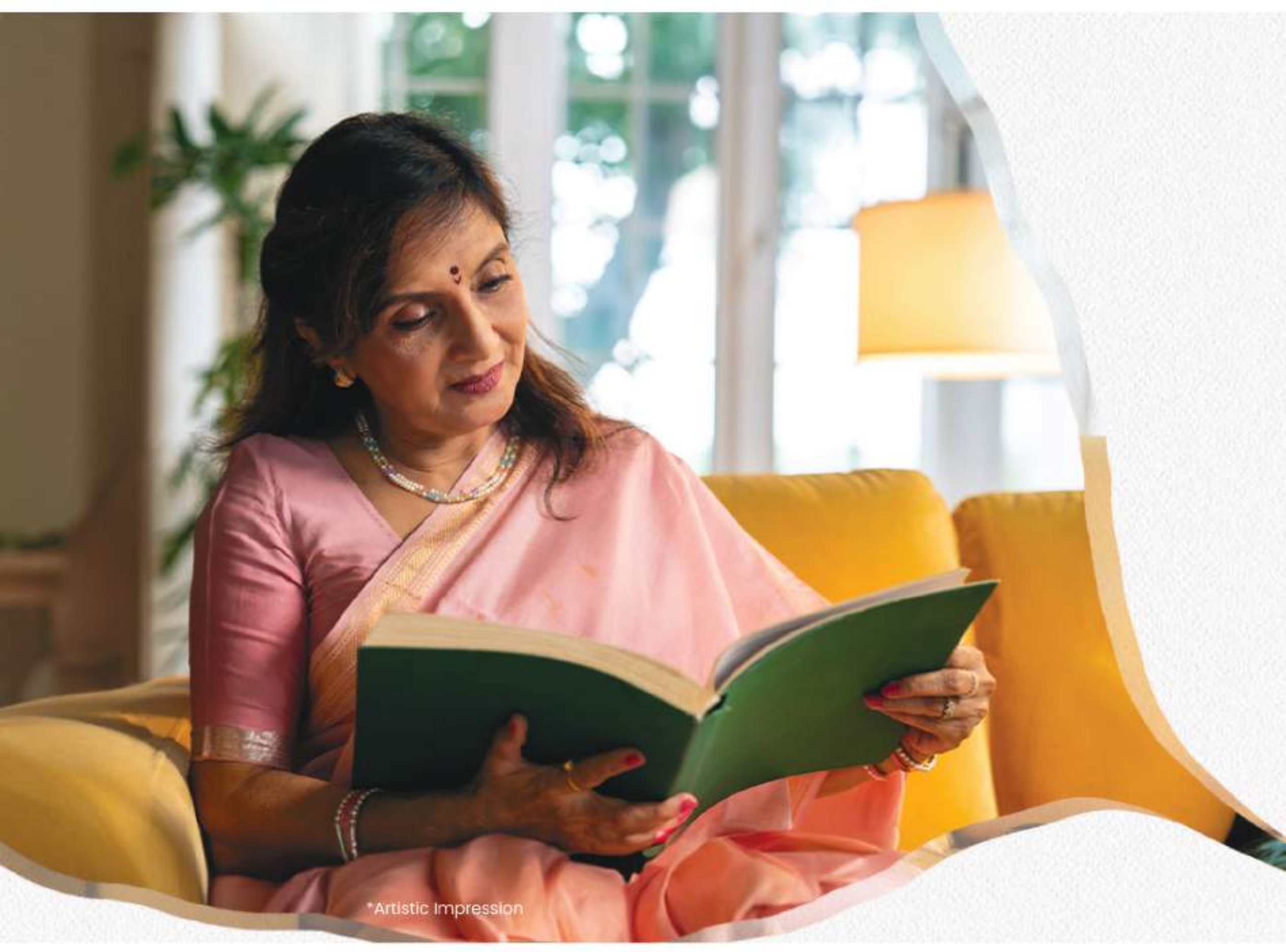
JMS Group is synonymous with  
*trust and excellence,* delivering  
iconic real estate projects which set  
*new benchmarks.*

Silver Living extends this legacy, offering  
more than just residences. It facilitates  
a community where seniors stay connected, engaged,  
and fulfilled. Thoughtfully designed, it fosters friendship,  
encourages participation, and brings the joy of  
learning and discovery everyday.





\* Artistic Impression





\*Artistic Impression



## *Care*

Known to live for centuries, a Peepal tree  
gives off itself generously and selflessly,  
to all forms of life, be it shelter,  
shade or nourishment.

At Silver Living,  
proactive and selfless care is manifested  
in the very DNA of our customer  
service protocol.




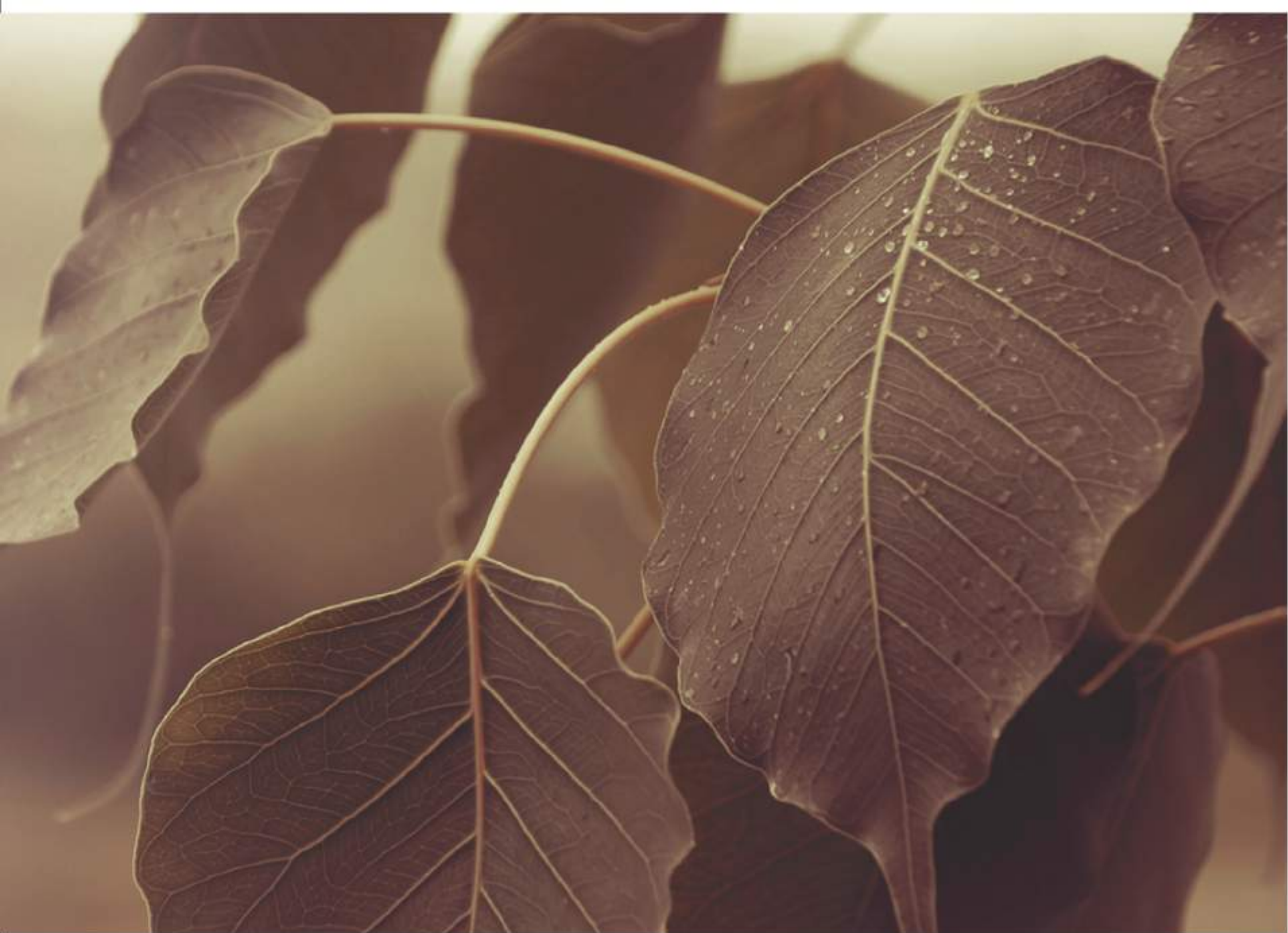


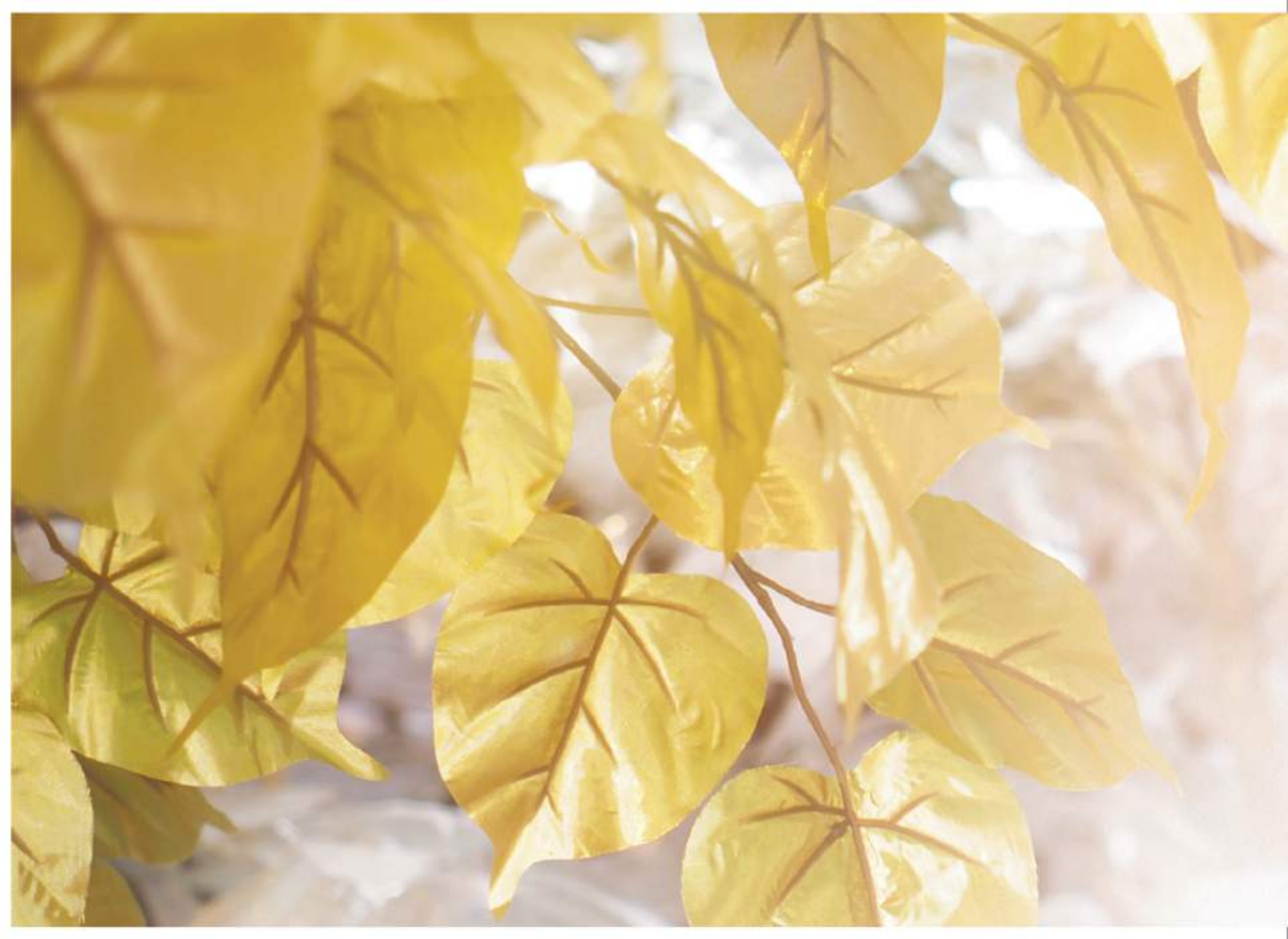
## *Comfort*

The thick, lush evergreen foliage of the Peepal tree makes it a very comfortable living space.

At Silver Living, your comfort is ensured in myriad ways, using a combination of technology and that personal yet unobtrusive human touch.










## *Cure*

The Peepal tree is God's wellness gift to life.  
It not only replenishes the environment with oxygen during the day;  
every part of it has therapeutic benefits,  
revered by the Ayurvedic legacy of our country.

At Silver Living, healthcare finds the most holistic  
combination with swift-response medicare,  
world-class fitness, traditional wellness services and  
disability-friendly facilities.





\* Artistic impression



The eyes see a *towering, contemporary condo* complex.

The heart sees *thoughtful planning* designed to make life  
*easier and more convenient* for senior residents.





Besides attendant *on call*, there are  
*grips and handles* installed in different places,  
to help seniors move with comfort and ease.





\*Artistic Impression

## *Location Advantage*

- Located just off an 84-meter wide road
- Excellent accessibility from Delhi Airport
- Seamless connectivity to Pataudi Road, Northern Peripheral Road, NH-8, and KMP Expressway
- Close proximity to Dwarka Expressway
- In close proximity to hotels like Holiday Inn, Lemon Tree
- Located close to Aarvy Hospital (a multi-speciality hospital)
- Located close to St. Xavier's School
- Walking distance to high street markets

- Projects by Promoters
- ⊘ Proposed Metro Route
- ⊘ Existing Metro Route

- ..... Dwarka - Gurugram Expressway
- Railway Line
- Delhi - Jaipur Highway (NH 8)

- Industrial
- Residential
- Commercial
- Agricultural

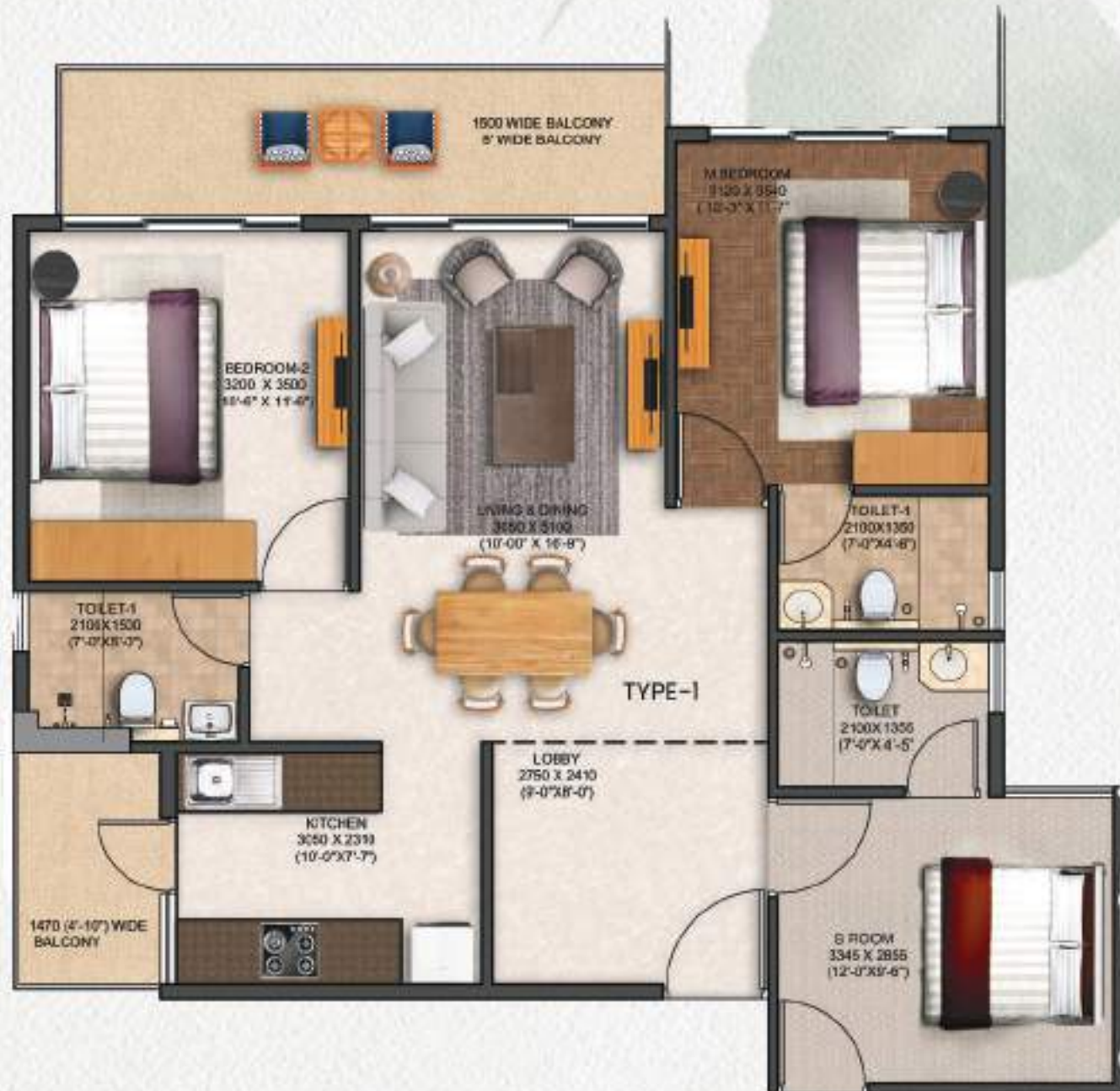
# LOCATION MAP



## Floor Units & Plans



**TYPE-A**



**TYPE-B**



**TYPE-C**



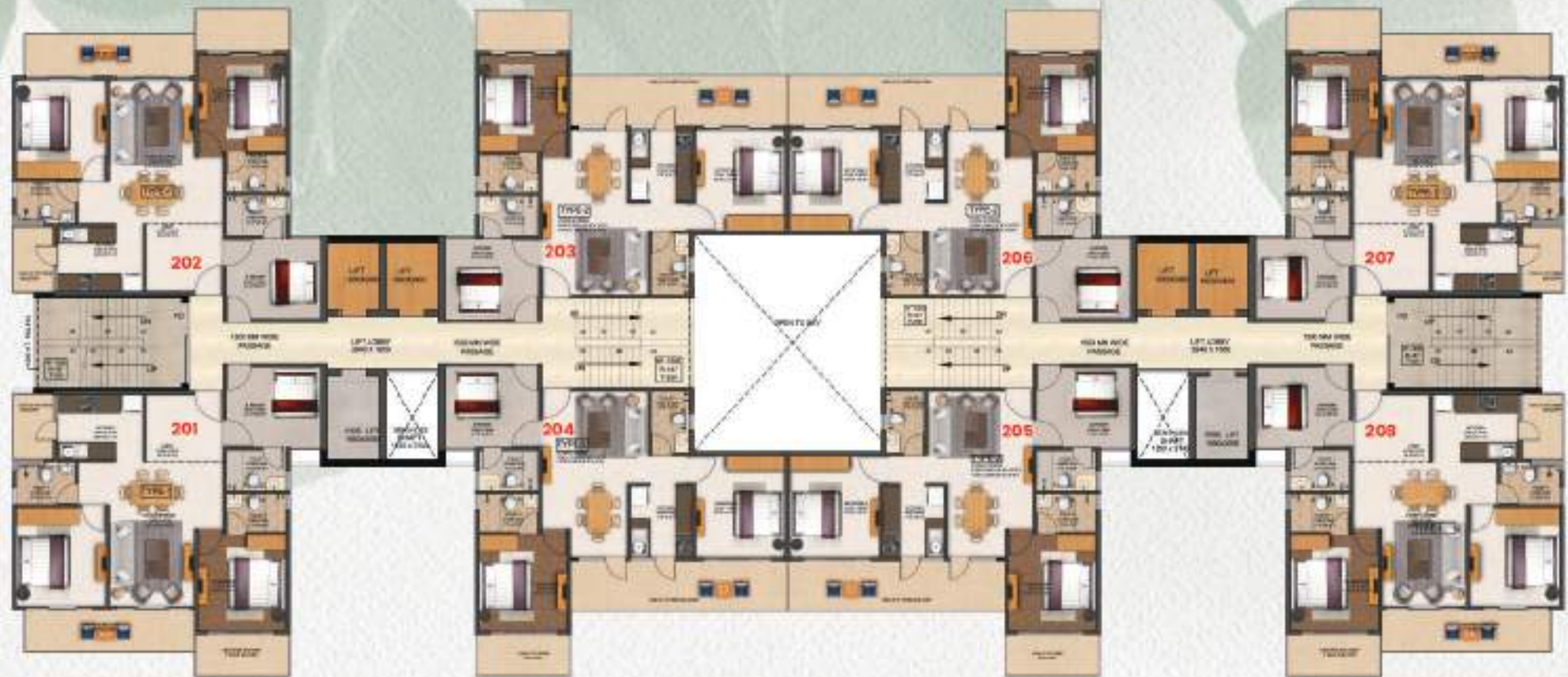
**TYPE-D**



**TYPE-E**



**TYPE-F**



**Typical Floor Plan  
2nd to 17th Floor**







## *Amenities*

### **Comfort**

- Reading and Music Room
- Dining Hall
- Cafeteria
- Terrace Cafe
- Card Room
- Soothing Interiors All Across
- Natural Light Optimization
- Vaastu-Inspired Architecture

### **Cure & Wellness**

- Carrom Room
- Table Tennis
- Billiard Room
- Swimming Pool
- Indoor Badminton Hall
- Fitness & Wellness Programs
- Traditional Wellness Services
- Doorstep Delivery of Essentials

### **Care**

- Wheelchair-Friendly Design
  - Attendant on Call
  - Grips and Handles Installed All Across
  - Medical Assistance
  - Multipurpose Hall
  - Concierge Services
- 



\*Artistic Impression

## Our Projects



Situated at Sector 93, Gurgaon, Crosswalk is a marvel of craftsmanship and luxury. With its intricate Spanish-style architecture and ambiance, it is the perfect destination for discerning customers who want to explore luxury retail at its best. Spanning over two acres, Crosswalk offers a unique shopping experience unlike any other.

HARERA No. 07 of 2019 RC/REP/HARERA/GGM/313/45/2019 Dated 18/02/2019



Marine Square is an epitome of fine craftsmanship and luxurious indulgence. With its exquisite Spanish-style architecture and tranquil ambiance, it serves as an ideal destination for discerning customers who seek an unparalleled experience of luxury retail. Spanning over two acres, Marine Square offers a shopping experience that is truly distinctive and unmatched.

RERA Reg No. 22 of 2018 HARERA-2018/1397/297 Dated 02/02/2018



Mega City, exquisite residential plots, offers a magnificent living experience. Equipped with a modern clubhouse, and top-notch amenities, residents can indulge in a luxurious mega lifestyle. Enjoy the perfect blend of urban convenience and opulent comfort at Mega City.

HARERA No. 64 of 2023 RC/REP/HARERA/GGM/720/452/2023/64 Dated 23/05/2023





Primeland exemplifies the pinnacle of upscale living. With meticulous design, a serene ambiance, and unwavering attention to every detail, it stands as the ultimate choice for those in pursuit of an extraordinary residential lifestyle. Primeland provides an exceptional living environment unmatched in every way.

HARERA No. 03 of 2021 RC/REP/HARERA/GGM/435/167/2021/03 Dated 18/01/2021



The Nation is a masterpiece of opulence and artistry. With its captivating architecture and tranquil surroundings, it presents an idyllic haven for individuals seeking the epitome of residential plots. Expanding over expansive acres, The Nation offers an unparalleled living experience beyond compare.

HARERA No. 89 of 2023 RC/REP/HARERA/GGM/745/477/2023/89 Dated 11/09/2023



The Pride epitomizes the artistry of fine design and unparalleled extravagance. Its intricate architectural mastery and tranquil surroundings provide an idyllic sanctuary for those in pursuit of residential magnificence. Encompassing expansive grounds, The Pride crafts an extraordinary living journey that transcends every expectation.

HARERA No. 118 of 2022 RC/REP/HARERA/GGM/643/375/2022/118 Dated 13/12/2022





Step into a world where every moment with your family is precious. Our celebration of joy, love, and togetherness is woven seamlessly into the fabric of each day. Nestled in Sector 95, Gurugram, The Pearl offers excellent connectivity to the vibrant city life while providing an oasis of peace, serenity, and tranquility for a truly peaceful residence.

HARERA No. 06 of 2024 RC/REP/HARERA/GGM/779/511/2024/06 Dated 30/01/2024



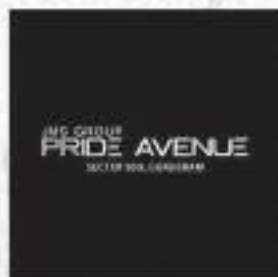
JMS Premiere Floors is nestled within the expansive and vibrant community of The Nation. Situated amidst 22.34 acres of beautifully designed landscape of The Nation. Premiere Floors is designed for you and your family, offering amenities for everyone; for you, your parents, your children and more, ensuring a harmonious and enjoyable living experience.

HARERA No. 122 of 2024 RC/REP/HARERA/GGM/895/627/2024/122 Dated 16/12/2024



Capital Square is a high-street commercial space located at Sector 95, Gurugram. It is the ultimate destination to shop, savour and smile. Located near major highways and established neighbourhoods, Capital Square combines convenience and elegance, creating an environment that appeals to discerning families and professionals. It offers easy access, high visibility and a business-friendly environment.

HARERA No. 82 of 2024 RC/REP/HARERA/GGM/855/587/2024/82 Dated 02/08/2024



Pride Avenue is strategically positioned to attract a steady flow of foot traffic from the affluent resident of The Pride and beyond. Designed to cater to the diverse needs of both retailers and shoppers, JMS Group Pride Avenue stands as a beacon of retail sophistication and vibrant community life.

HARERA No 118 of 2024 RC/REP/HARERA/GGM/891/623/2024/118 Dated 09/12/2024





*Care Comfort Cure.*





---

## *We are JMS Group*

We stand as a forward-thinking force in the real estate realm, reshaping the NCR with unwavering commitment, honesty, and clarity. Our dedication to fulfilling promises and nurturing unity forms the bedrock of enduring relationships. Infused with unmatched professionalism, we transform the real estate landscape through innovations. Embark on a journey with us to witness unparalleled experience and forge enduring connections as we propel forward with unwavering dedication to excellence.

---

## *Building Tomorrow, Together*



\* Artistic Impression



## Experience Life at *Silver Living*



📍 JMS Group, M3M Tee Point, 7th Floor, North Block, Sector 65, Gurugram, Haryana -122018

☎ +91 801 0000 777 | 🌐 [www.jmsgroup.co.in](http://www.jmsgroup.co.in)

Disclaimer: \*Promoter/Company has registered the Project- "JMS Group Silver Living" before Haryana, Gurugram and has obtained Registration No 38 of 2025 (RC/REP/HARERA/03M/936/666/2025/19 dated 16/04/2025)

The pictures, Images, perspective, features, figures, designs, specifications, information, content and other details herein are only indicative & Not a legal offering and the same are merely an indication for the purpose of depicting the appearance of the project "JMS Group Silver Living" of the Company/Promoter M/s JMS Infra Realty Pvt. Ltd. and is for general information only. The said information etc. provided herein is only for guidance and must not be relied on as such and shall not be construed as an advertisement for marketing purposes, offer for sale, assurance, invitation to offer, contract of any nature whatsoever or gives warranty of any kind, implied express or statutory and shall have no binding effect on the Company/Promoter. The said information etc. is subject to change without any notice or intimation whatsoever. Any decision of buying or investing in the project of Company/Promoter should be upon complete verification of all the details including type of inventories, amenities, area, specifications, services, approvals, policy under Retirement Housing Policy dated 17-05-2021, permissions and other relevant terms independently with the authorized sales team of the company/promoter, at the company's/promoter's offices/site offices, Company/Promoter, their affiliates, nor any of their respective directors, officers, employees, agents or representatives shall not be liable for any loss, expenses or damage including, without limitation, indirect or consequential loss or damage or any expense, loss or damage etc. whatsoever arising from use, or loss of use, of data/information etc. and shall also not be liable for any expenses, loss or damages of any kind arising from the information etc. or any inaccuracy in the information etc.

The unit Type describe in the brochure as "Type A is Type 1E, Type B is Type 1, Type C is Type 1AP, Type D is Type 2AP, Type E is Type 2F, Type F is Type 2". That mentioned herein \* T&C Apply.