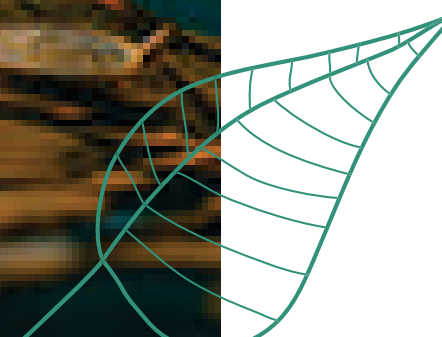


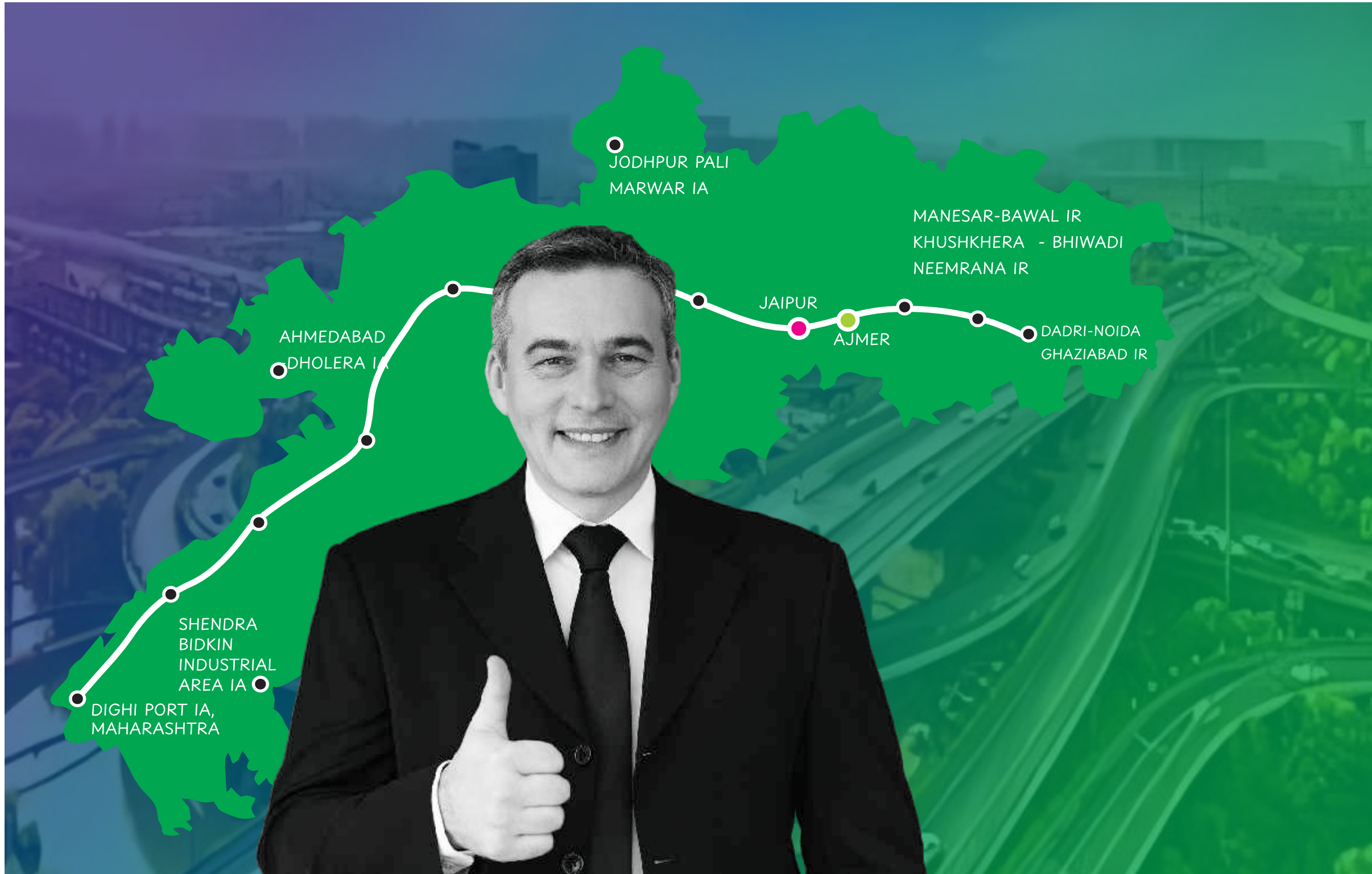




Welcome to Green Gold

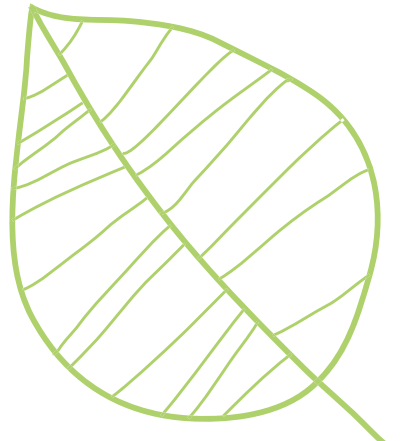
Imagine buying not just any plot, but a unique opportunity to own a piece of thriving land. Introducing **Sanjeevni Green Vihar**, a residential plotted development located on Mahlan, Ajmer Road in the rapidly growing DMIC corridor. Recognizing that land is one of the most valuable commodities, we've designed this project with exciting features to enhance your investment's value. Our vision prioritizes exceptional returns, connectivity, and a lifestyle enriched by the natural greenery surrounding the property. With robust infrastructure and excellent connectivity, this development is poised for growth, making it an ideal choice for investors looking to capitalize on the booming real estate market.





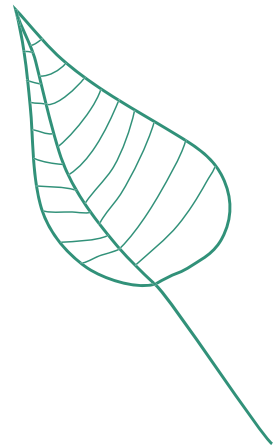
DMIC a Growth Corridor

The Delhi-Mumbai Industrial Corridor (DMIC) is a transformative project aimed at enhancing economic development between India's two major cities. This growth corridor is strategically positioned, providing excellent connectivity through highways, railways, and air routes. SANJEEVNI GREEN VIHAR offers a vibrant lifestyle with access to modern amenities, educational institutions, and healthcare facilities. Additionally, the DMIC is attracting numerous industries and businesses, leading to job creation and infrastructure development. For investors, this location promises substantial appreciation in property values due to its economic potential and growing demand. Investing in the DMIC area is a smart choice for those looking for both a home and a lucrative opportunity.





Growing Location Refreshing Life



Sanjeevni Green Vihar has been designed keeping in mind all the needs and requirement of upcoming modern and global society. This Gated Township is in the vicinity of billion of Residential, Industrial, Commercial and Educational Projects which make this area center of attraction for Foreign Direct Investment (FDI) and Big Corporate Houses. Central and state Government have made huge investment in 20 to 25 minutes radius of the project including Dedicated Freight Corridor (DFC), Junction in Phulera, Delhi Mumbai Industrial Corridor (DMIC), 500 Acres approx of Housing Project by Rajasthan Housing Board, 3000 Acres of Mahindra SEZ, International Convention and Golf Course etc. Where every inch of your property will reflect you Where you can choose when you want to be amidst a few or amidst a bustling community Where you'll never run out of choices on how to spend your every moment.



Invest & Relax

Investing in Sanjeevni Green Vihar is a strategic way to build wealth while allowing for a stress-free investment experience.

Here's a brief breakdown:

Long-Term Growth: Sanjeevni Green Vihar offer appreciates over time, making it a potentially profitable investment.

Diversification: Real estate can diversify your investment portfolio, providing stability against market fluctuations.

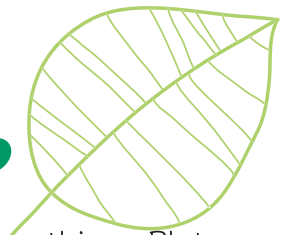
Low Maintenance: Compared to other properties, vacant plots typically require less ongoing management, allowing for a more relaxed investment approach.

Future Planning: Investing in Sanjeevni Green Vihar can be a way to secure a location for future personal or business use.

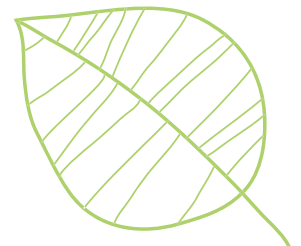




Love to Live Here.



Have you ever wondered why a fully integrated township has everything - Plots and Villas. Broad roads, well-lit streets, pavements and carefully manicured gardens and a three tier security system. We believe, behind the glitz and glamour of such facilities are very basic human needs that are taken care of, Needs like convenience, assurance and safety. Convenience that everything is at a hand's distance. Everything is in order, in place. Assurance that the people around are good. In fact, what a integrated township like comforting assurance of being at a place where you will love to live....





Dream Villa.

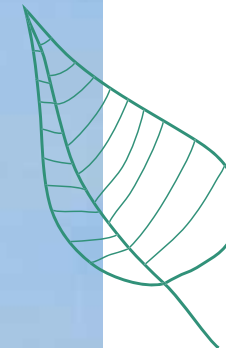


Contrary to popular belief that good plots are found outside the city, SANJEEVNI GREEN Vihar is lush green, gated, plotted development found inside - a rapidly progressing, well-connected neighbourhood.

This pollution-free, clean environment provides the ideal green setting for a healthy lifestyle. It is close to all conveniences such as social infrastructure, schools, transportation facilities, hospitals, and everything essential.

So invest now and take the first concrete step to build your dream future home or gain tidy returns.

- Offering exclusive land for every villa and Plots
- Our villas & Plots have ample space between them to allow natural light into your home or celebration home.
- Open spaces on all sides make free flow of air possible and, as a result, interiors remain cooler and fresher.
- We build villas according to Vaastu principles, so you get the best out of sunlight, wind and the surrounding greenery.







Celebrate life in your celebration home.



This perfect resort living has all the makings of a weekend home, but surprisingly, it will be your everyday home also. One of the most exclusive offerings at SANJEEVNI GREEN VIHAR, here's your opportunity to belong to a like-minded community of the who's who of the world.

A self-sustainable living with everything you may need within its expanse Building a sensitive community with the touch of art and culture.

Nature's abundance everywhere you go







Well Planned Growth with Happiness

SANJEEVNI GREEN VIHAR is a well-planned plot township and is a carefully designed community that integrates residential, commercial, and recreational spaces. Here are key features:

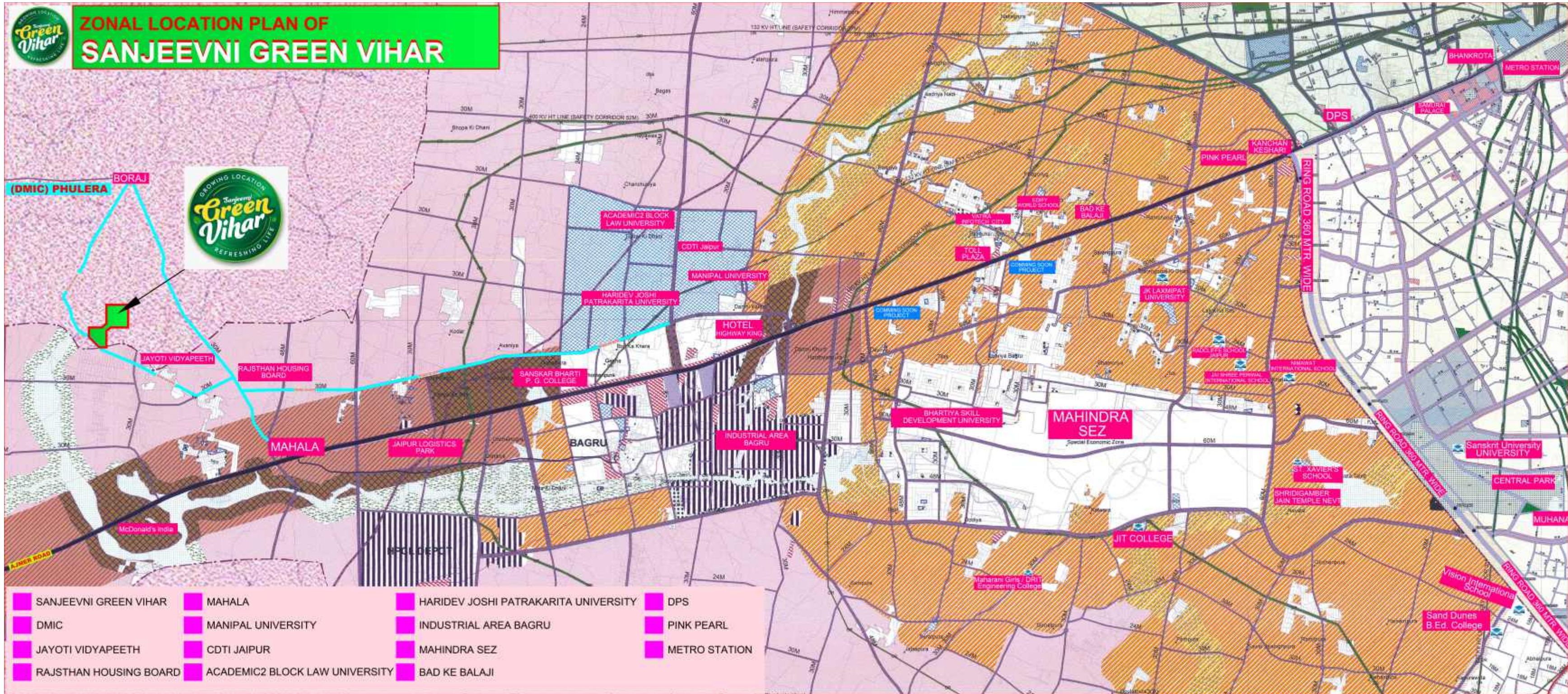
Infrastructure: Adequate roads, utilities (water, electricity), plot marking are essential for accessibility and convenience.

Zoning: Different zones for birds, kids play, sports, organized development and reduce congestion.

Amenities: Water Line on each plot, underground electrification, yoga space, kids play are, lush green gardens enhance quality of life and attract residents.

A well-planned and Govt Approved township not only enhances living standards but also increases property value, making it a smart investment choice.





A Zone of Growth A Location of Success

- NEAR THE TOWNSHIP
- DMIC
 - JYOTI VIDHYA PEETH UNIVERSITY
 - RAJASTHAN HOUSING BOARD
 - MAHALA
 - MANIPAL UNIVERSITY
 - CDTI JAIPUR
 - ACADEMIC2 BLOCK LAW UNIVERSITY
 - HARIDEV JOSHI PATRAKARITA UNIVERSITY
 - INDUSTRIAL AREA BAGRU
 - MAHINDRA WORLD CITY, SEZ
 - BAD KE BALAJI
 - DPS,
 - PINK PEARL WATER PARK
 - METRO STATION
 - INFOSYS
 - INDO JAPANESE COLLABORATION
 - 8 LANE JAIPUR-AJMER EXPRESSWAY
 - DEUTSCHE BANK
 - GOLDEN QUADRILATERAL



Experience Joy and Laughter in the Green Environment.



- Entry Gate with Guard Room
- Temple
- Children Play Area
- LED Street Lights • CCTV

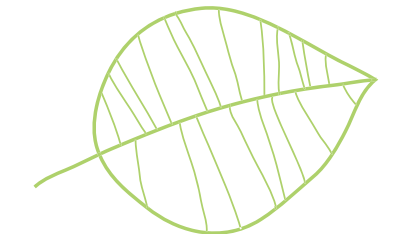




A Township that Cares for You



- Underground Electricity
- Road Side Plantation
- Underground Water Pipeline
- 24x7 Water Supply
- Security Guards

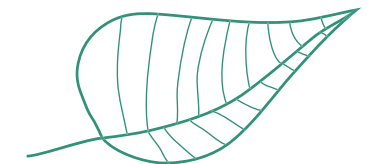




Embrace an Unforgettable Experience!



- Open Gym
- Senior Citizen Seating Area (Gazebo)
- Badminton Court
- Yoga Space





Where Nature Lovingly Nurtures Your Soul.



- Herbal Garden
- Landscaped Garden
- Walk Way
- Plot Demarcation
- Damar Road



FAQs?



1. What is proposed Development of SANJEEVNI GREEN VIHAR ?
The project will be developed with Road, Water, Underground Electrification Water Harvesting, Park, Plantation and other facilities.
2. What is the future overall development near SANJEEVNI GREEN VIHAR ?
Project is well connected with Jaipur-Ajmer Express Highway (Nh8) and surrounded with universities, schools, colleges, hospitals, Industrial Area and Government Residential Projects also.
3. What are the plot sizes available in SANJEEVNI GREEN VIHAR ?
The plots are in sizes of 111sq yards to 200sq. yards
4. How much open area would be there in the development?
Approximately 40% is open area.
5. Is there water supply for individual plots?
Yes, the water supply will be for individual plots.
6. What will be the inside road in the scheme?
The inside road is Damar Road.
7. Is the electricity connection a 1 phase or 3 phase connection?
It will be as per the norms of residential colony.
8. What will be the cost of Electricity & Water connection?
It will be as per Government Norms.
9. Are there any schools near the location?
There are many schools which are 5 mint drive from the Project.

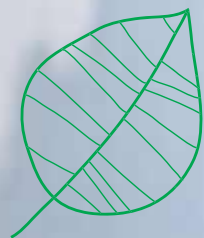
10. Are there any hospitals/medical centers near the location?
There are hospitals within 5 minutes drive.
11. How far is the nearest petrol pump?
The nearest petrol pump is 5 minutes away.
12. Is there any bank branches/ATM near the location?
ATM is present at a distance of 5 mints from site.
13. Can a visit to the site be arranged?
Yes, we would arrange a visit on your request.
14. How do I book my Plot at SANJEEVNI GREEN VIHAR?
You can book your plot through our staff/representative
15. When can I start construction on my plot?
Yes, you can construct after getting Registry Done.
16. Is it possible to get finance for this project?
Yes, we will help you get finance through our tie-ups with banks and financial institutions, where you can avail of special offers customized for our project.
17. Is SANJEEVNI GREEN VIHAR an approved layout?
Yes. The layout is approved by GOVT. / RERA .
18. Whom do I contact if I have any more questions/clarifications?
Please email us at: sanjeevnibuildhome@gmail.com

NEAR JYOTI VIDYAPEETH WOMEN'S UNIVERSITY MAHALA, AJMER ROAD, JAIPUR



LOCATION PLAN NOT TO SCALE

Building Happiness Since 2007



Sanjeevni Group has successfully completed 17 years in Rajasthan Real Estate Market & is one of the fastest growing real estate company since 2007. We have successfully completed & delivered 32 Projects including plotting developments, farm houses as well as residential colonies, Presently around 11000+ families are our satisfied customers whom we are well connected. Sanjeevni Buildhome is Committed to achieve excellence in real estate development for the benefit of our customers by improving and setting new standards to deliver value for money as well as provide sound investment opportunities, thereby giving a well defined focus to customer relationship & satisfaction. Sustained efforts to enhance customer value and quality Ethical and professional service Compliance and respect for all community, environmental and legal requirements.

Integrity

- Professionalism
- Timeliness
- Confidentiality





AJIT TOWER, NEAR GALAXY CINEMA,
SHIPRA PATH, MANSAROVAR, JAIPUR

CALL: 9314 166 166

WWW.SANJEEVNIBUILDHOME.COM

Disclaimer: Builders and Developers reserve the right to change any design and specification of the building without any prior notice and information. This brochure is for illustration purpose only and it cannot be in any way treated as a legal document. All information specifications, plans, material and visual representations contained in the brochure, model & sample are subject to change time to time by the developer and/ the company authorities add shall not form part of the offer or contract.

SANJEEVNI GREEN VIHAR PHASE-I
RERA NUMBER - RAJ/P/2024/3344
WWW.RERA.RAJASTHAN.GOV.IN