

PRIDEVILLE-II

EVERY ACRE OF PRIDE

At JAYPEE SPORTS CITY



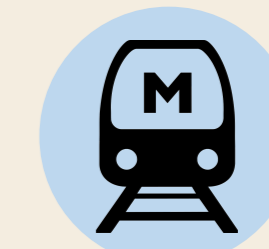
Site Location



DANKAUR RAILWAY STATION
(14.3 KM)



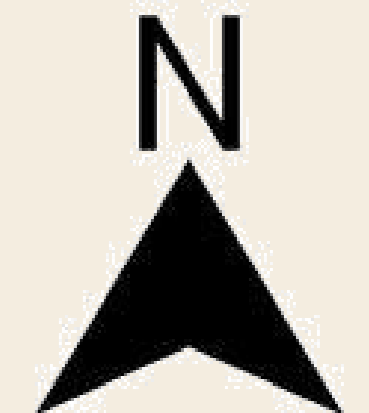
JEWAR AIRPORT
(22.8 KM)



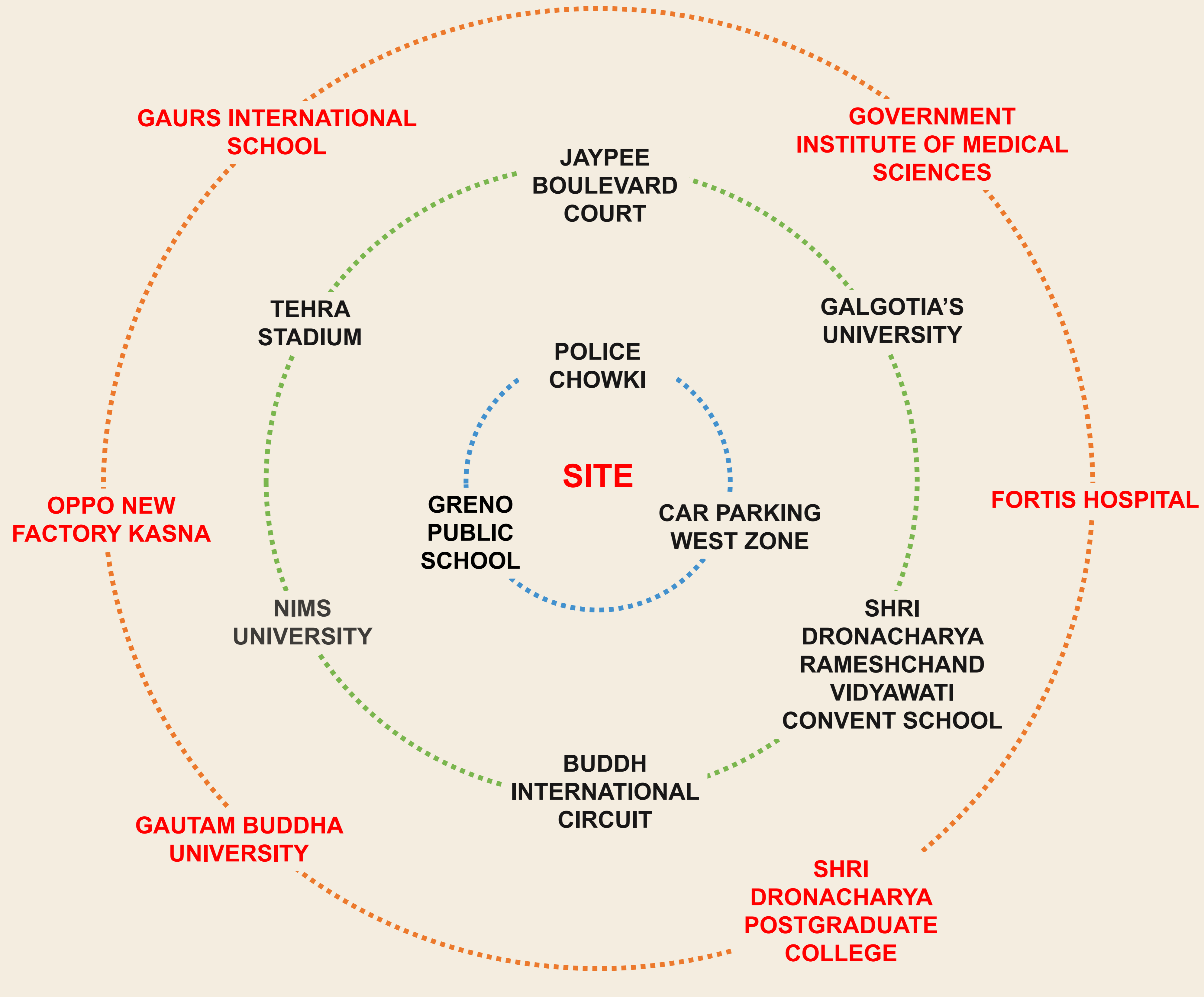
KNOWLEDGE PARK 2 METRO STATION
(12.9 KM)



NOIDA ZERO POINT BUS STATION
(11.4 KM)



Site Surrounding



Project Brief

- **Project Name** : Prideville-II
- **Location** : GH-A4, Sector 25, Jaypee Greens Sports City SDZ, YEIDA, Budh Nagar, U.P.
- **Project Type** : Group Housing (Apartments & Community Spaces)
- **Theme** : Mediterranean
- **Site Area** : 4.7 Acres
- **No. of Towers** : 6
- **Construction Type** : Aluminium Formwork
- **No. of Apartments** : 552

Site Plan



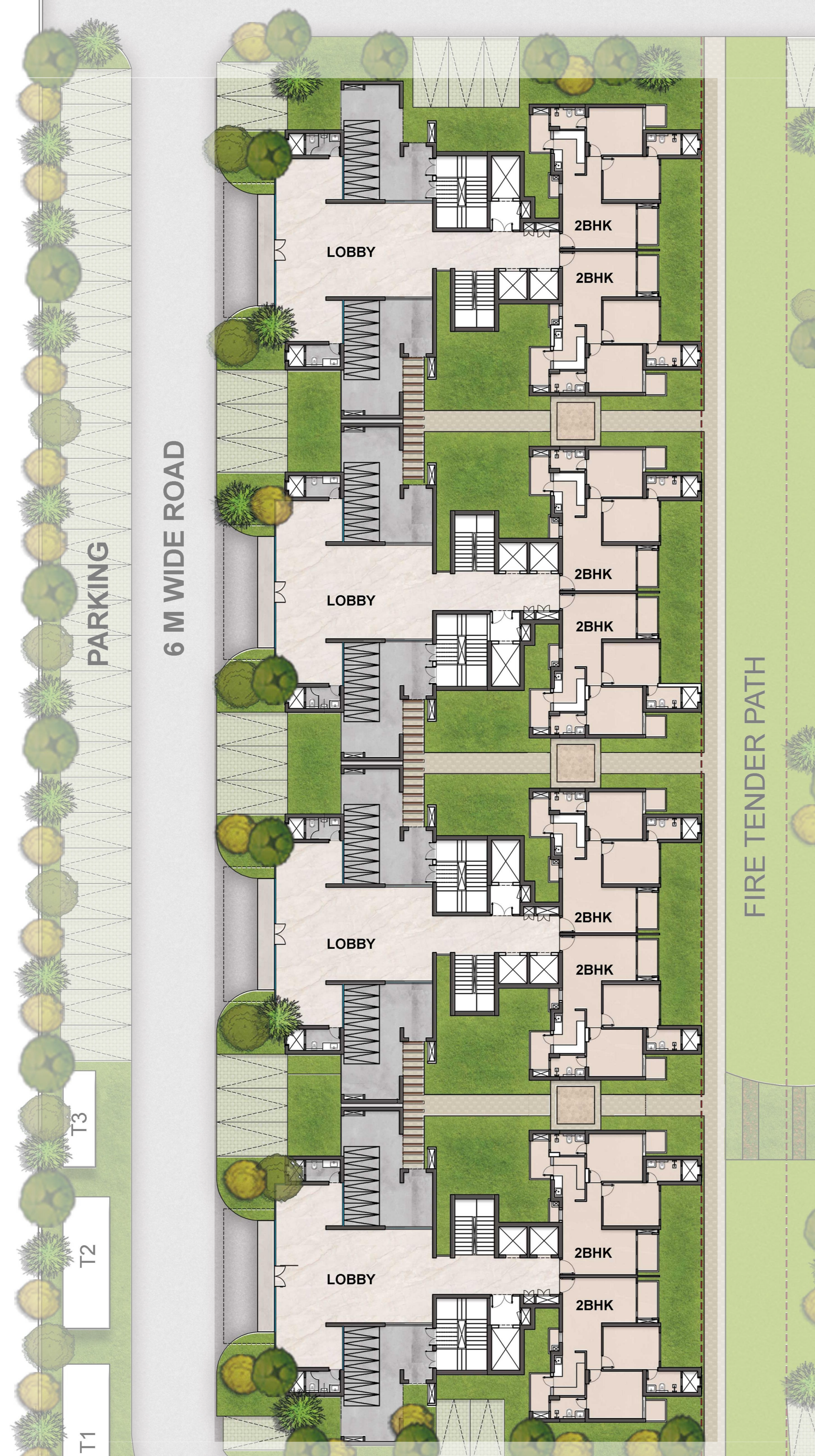
Site Plan- Stilt level



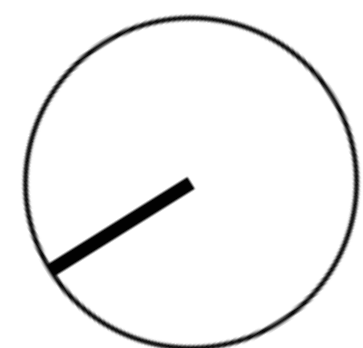
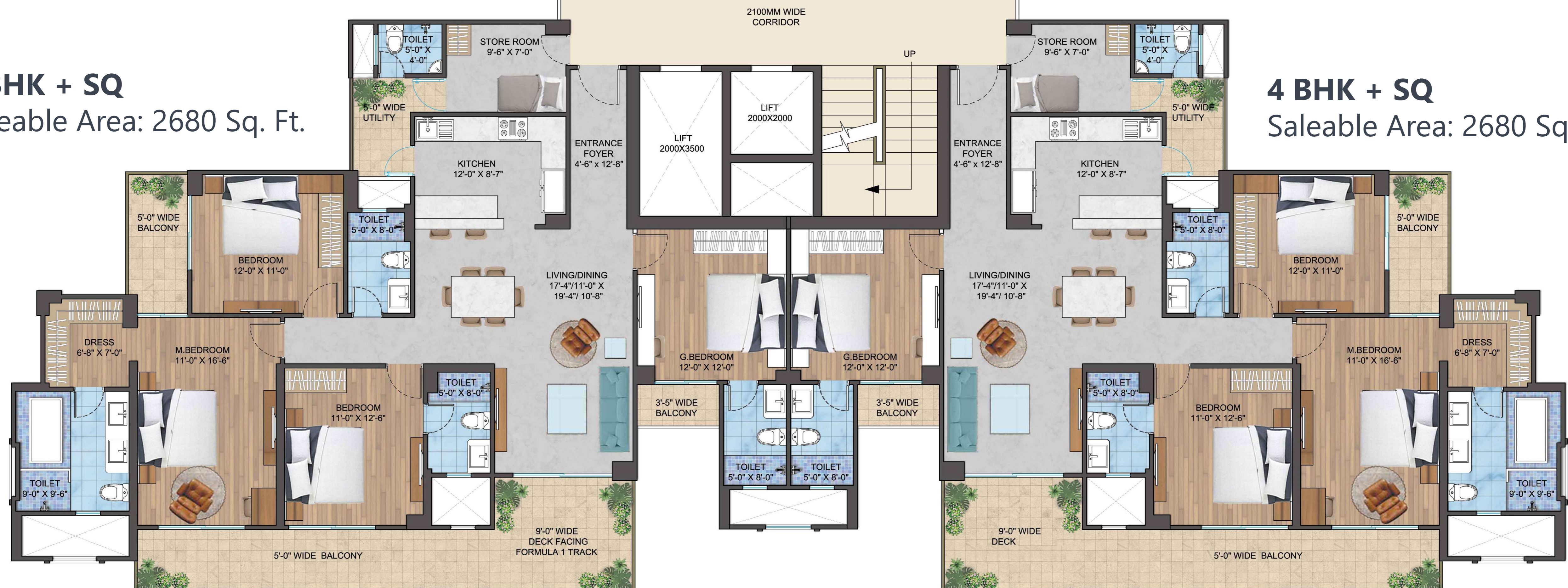
CLUB



2BHK Tower



4BHK + SQ- Typical floor



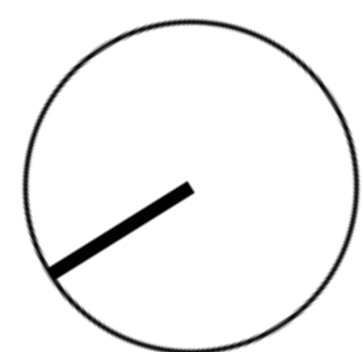
4BHK + SQ- Typical Unit

Saleable Area: 2680 Sq. Ft.

Carpet Area: 1463 Sq. Ft.

Balcony Area: 372 Sq. Ft.

Unit BUA: 1927 Sq. Ft.



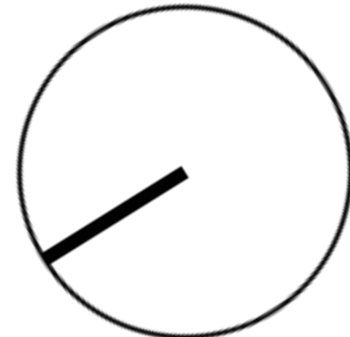
2BHK- Typical floor

2 BHK- TYPE 02
 Saleable Area : 1200 Sq. Ft.

2 BHK- TYPE 01
 Saleable Area : 1200 Sq. Ft.

2 BHK- TYPE 02
 Saleable Area : 1200 Sq. Ft.

2 BHK- TYPE 01
 Saleable Area : 1200 Sq. Ft.



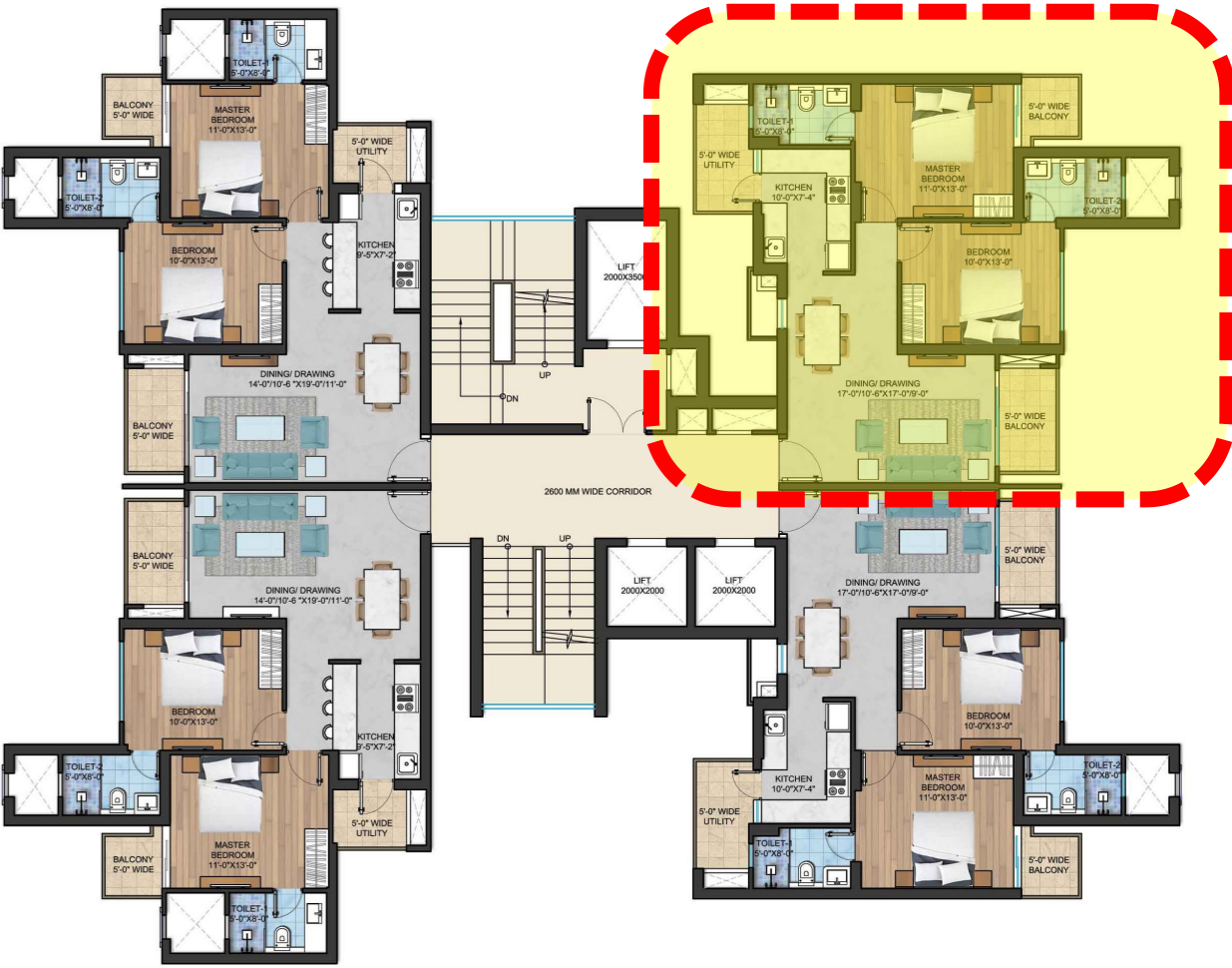
2BHK- Typical Unit (TYPE 01)

Saleable Area : 1200 Sq. Ft.

Carpet Area: 705 Sq. Ft.

Balcony Area: 117 Sq. Ft.

Unit BUA: 914 Sq. Ft.



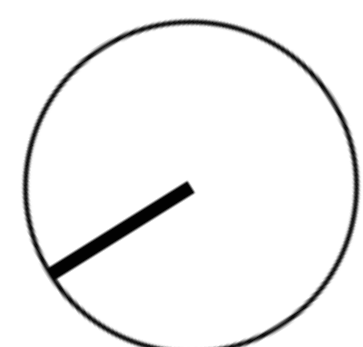
2BHK- Typical Unit (TYPE 02)

Saleable Area : 1200 Sq. Ft.

Carpet Area: 712 Sq. Ft.

Balcony Area: 110 Sq. Ft.

Unit BUA: 920 Sq. Ft.



Inventory- Tower A1 & A2

EXTRA LAWN AREA WITH POOL FACING			
EXTRA LAWN AREA			
POOL FACING			
EXTRA BALCONY/TERRACE AREA			
EXTRA BALCONY/TERRACE AREA WITH POOL FACING			
TOWER A1 - 4BHK			
TYPICAL FLOORS			
CARPET AREA	1463	1463	1463
UNIT COVERED	1555	1555	1555
BALCONY AREA	372	372	372
BUILT UP AREA	1927	1927	1927
SALEABLE AREA	2680	2680	2680
1st FLOOR	A1-101	A1-102	A1-104
2nd FLOOR	A1-201	A1-202	A1-204
3rd FLOOR	A1-301	A1-302	A1-304
4th FLOOR	A1-401	A1-402	A1-404
5th FLOOR	A1-501	A1-502	A1-504
6th FLOOR	A1-601	A1-602	A1-604
7th FLOOR	A1-701	A1-702	A1-704
8th FLOOR	A1-801	A1-802	A1-804
9th FLOOR	A1-901	A1-902	A1-904
10th FLOOR	A1-1001	A1-1002	A1-1004
11th FLOOR	A1-1101	A1-1102	A1-1104
12th FLOOR	A1-1201	A1-1202	A1-1204
13th FLOOR	A1-1301	A1-1302	A1-1304
14th FLOOR	A1-1401	A1-1402	A1-1404
15th FLOOR	A1-1501	A1-1502	A1-1504
16th FLOOR	A1-1601	A1-1602	A1-1604
17th FLOOR	A1-1701	A1-1702	A1-1704
18th FLOOR	A1-1801	A1-1802	A1-1804
PENTHOUSE			
19th & 20th FLOOR	A1-1901	A1-1902	A1-1904
CARPET AREA	1463	1463	1463
	1244	1244	1244
	2707	2707	2707
UNIT COVERED	1555	1555	1555
	1350	1350	1350
	2905	2905	2905
BALCONY AREA	372	372	372
	251	251	251
	623	623	623
BUILT UP AREA	1927	1927	1927
	1601	1601	1601
	3528	3528	3528
SALEABLE AREA	4861	4861	4861
FIRST FLOOR			

Note - Terrace area of 420 Sq. ft. to the flats A1-101, A1-102 & A1-103 AND 1120 Sq. ft. To the flat A1-104 is Additionally provided.

EXTRA LAWN AREA WITH POOL FACING			
EXTRA LAWN AREA			
POOL FACING			
EXTRA BALCONY/TERRACE AREA			
EXTRA BALCONY/TERRACE AREA WITH POOL FACING			
TOWER A2 - 4BHK			
TYPICAL FLOORS			
CARPET AREA	1463	1463	1463
UNIT COVERED	1555	1555	1555
BALCONY AREA	372	372	372
BUILT UP AREA	1927	1927	1927
SALEABLE AREA	2680	2680	2680
1st FLOOR	A2-101	A2-102	A2-104
2nd FLOOR	A2-201	A2-202	A2-204
3rd FLOOR	A2-301	A2-302	A2-304
4th FLOOR	A2-401	A2-402	A2-404
5th FLOOR	A2-501	A2-502	A2-504
6th FLOOR	A2-601	A2-602	A2-604
7th FLOOR	A2-701	A2-702	A2-704
8th FLOOR	A2-801	A2-802	A2-804
9th FLOOR	A2-901	A2-902	A2-904
10th FLOOR	A2-1001	A2-1002	A2-1004
11th FLOOR	A2-1101	A2-1102	A2-1104
12th FLOOR	A2-1201	A2-1202	A2-1204
13th FLOOR	A2-1301	A2-1302	A2-1304
14th FLOOR	A2-1401	A2-1402	A2-1404
15th FLOOR	A2-1501	A2-1502	A2-1504
16th FLOOR	A2-1601	A2-1602	A2-1604
17th FLOOR	A2-1701	A2-1702	A2-1704
18th FLOOR	A2-1801	A2-1802	A2-1804
PENTHOUSE			
19th & 20th FLOOR	A2-1901	A2-1902	A2-1904
CARPET AREA	1463	1463	1463
	1244	1244	1244
	2707	2707	2707
UNIT COVERED	1555	1555	1555
	1350	1350	1350
	2905	2905	2905
BALCONY AREA	372	372	372
	251	251	251
	623	623	623
BUILT UP AREA	1927	1927	1927
	1601	1601	1601
	3528	3528	3528
SALEABLE AREA	4861	4861	4861
FIRST FLOOR			

Note - Terrace area of 420 Sq. ft. to the flats A2-101, A2-102 & A2-103 AND 1120 Sq. ft. To the flat A2-104 is Additionally provided.

Inventory- Tower B1 & B2

EXTRA LAWN AREA WITH POOL FACING			
EXTRA LAWN AREA		POOL FACING	
EXTRA BALCONY/TERRACE AREA			
EXTRA BALCONY/TERRACE AREA WITH POOL FACING			
TOWER B1 - 2BHK			
TYPICAL FLOORS			
CARPET AREA	705	712	712
UNIT COVERED	798	810	810
BALCONY AREA	117	110	110
BUILT UP AREA	914	920	920
SALEABLE AREA	1200	1200	1200
Ground FLOOR	B1-001	B1-002	-
1st FLOOR	B1-101	B1-102	-
2nd FLOOR	B1-201	B1-202	B1-203
3rd FLOOR	B1-301	B1-302	B1-303
4th FLOOR	B1-401	B1-402	B1-403
5th FLOOR	B1-501	B1-502	B1-503
6th FLOOR	B1-601	B1-602	B1-603
7th FLOOR	B1-701	B1-702	B1-703
8th FLOOR	B1-801	B1-802	B1-803
9th FLOOR	B1-901	B1-902	B1-903
10th FLOOR	B1-1001	B1-1002	B1-1003
11th FLOOR	B1-1101	B1-1102	B1-1103
12th FLOOR	B1-1201	B1-1202	B1-1203
13th FLOOR	B1-1301	B1-1302	B1-1303
14th FLOOR	B1-1401	B1-1402	B1-1403
15th FLOOR	B1-1501	B1-1502	B1-1503
16th FLOOR	B1-1601	B1-1602	B1-1603
17th FLOOR	B1-1701	B1-1702	B1-1703
18th FLOOR	B1-1801	B1-1802	B1-1803
19th FLOOR	B1-1901	B1-1902	B1-1903
20th FLOOR	B1-2001	B1-2002	B1-2003
21st FLOOR	B1-2101	B1-2102	B1-2103
22nd FLOOR	B1-2201	B1-2202	B1-2203
23rd FLOOR	B1-2301	B1-2302	B1-2303
24th FLOOR	B1-2401	B1-2402	B1-2403
25th FLOOR	B1-2501	B1-2502	B1-2503
REFUGE AREA FLOOR			
19th FLOOR	-	B1-1903	-
CARPET AREA	-	573	-
UNIT COVERED	-	671	-
BALCONY AREA	-	56	-
BUILT UP AREA	-	727	-
SALEABLE AREA	-	919	-

Note -

- Lawn area of 200 Sq. ft. to the flats B1-001 & B1-002 is Additionally provided.
- Terrace area of 200 Sq. ft. to the flats B1-203 & B1-204 is Additionally provided.

EXTRA LAWN AREA WITH POOL FACING			
EXTRA LAWN AREA		POOL FACING	
EXTRA BALCONY/TERRACE AREA			
EXTRA BALCONY/TERRACE AREA WITH POOL FACING			
TOWER B2 - 2BHK			
TYPICAL FLOORS			
CARPET AREA	705	705	712
UNIT COVERED	798	798	810
BALCONY AREA	117	117	110
BUILT UP AREA	914	914	920
SALEABLE AREA	1200	1200	1200
Ground FLOOR	B2-001	B2-002	-
1st FLOOR	B2-101	B2-102	-
2nd FLOOR	B2-201	B2-202	B2-203
3rd FLOOR	B2-301	B2-302	B2-303
4th FLOOR	B2-401	B2-402	B2-403
5th FLOOR	B2-501	B2-502	B2-503
6th FLOOR	B2-601	B2-602	B2-603
7th FLOOR	B2-701	B2-702	B2-703
8th FLOOR	B2-801	B2-802	B2-803
9th FLOOR	B2-901	B2-902	B2-903
10th FLOOR	B2-1001	B2-1002	B2-1003
11th FLOOR	B2-1101	B2-1102	B2-1103
12th FLOOR	B2-1201	B2-1202	B2-1203
13th FLOOR	B2-1301	B2-1302	B2-1303
14th FLOOR	B2-1401	B2-1402	B2-1403
15th FLOOR	B2-1501	B2-1502	B2-1503
16th FLOOR	B2-1601	B2-1602	B2-1603
17th FLOOR	B2-1701	B2-1702	B2-1703
18th FLOOR	B2-1801	B2-1802	B2-1803
19th FLOOR	B2-1901	B2-1902	B2-1903
20th FLOOR	B2-2001	B2-2002	B2-2003
21st FLOOR	B2-2101	B2-2102	B2-2103
22nd FLOOR	B2-2201	B2-2202	B2-2203
23rd FLOOR	B2-2301	B2-2302	B2-2303
24th FLOOR	B2-2401	B2-2402	B2-2403
25th FLOOR	B2-2501	B2-2502	B2-2503
REFUGE AREA FLOOR			
19th FLOOR	-	-	B2-1903
CARPET AREA	-	-	573
UNIT COVERED	-	-	671
BALCONY AREA	-	-	56
BUILT UP AREA	-	-	727
SALEABLE AREA	-	-	919

Note -

- Lawn area of 200 Sq. ft. to the flats B2-001 & B2-002 is Additionally provided.
- Terrace area of 200 Sq. ft. to the flats B2-203 & B2-204 is Additionally provided.

Inventory- Tower B3 & B4

EXTRA LAWN AREA WITH POOL FACING					
EXTRA LAWN AREA					
POOL FACING					
EXTRA BALCONY / TERRACE AREA					
EXTRA BALCONY / TERRACE AREA WITH POOL FACING					
TOWER B3 - 2BHK					
TYPICAL FLOORS					
CARPET AREA	705	705	712	712	712
UNIT COVERED	798	798	810	810	810
BALCONY AREA	117	117	110	110	110
BUILT UP AREA	914	914	920	920	920
SALEABLE AREA	1200	1200	1200	1200	1200
Ground FLOOR	B3-001	B3-002	-	-	-
1st FLOOR	B3-101	B3-102	-	-	-
2nd FLOOR	B3-201	B3-202	B3-203	B3-204	B3-204
3rd FLOOR	B3-301	B3-302	B3-303	B3-304	B3-304
4th FLOOR	B3-401	B3-402	B3-403	B3-404	B3-404
5th FLOOR	B3-501	B3-502	B3-503	B3-504	B3-504
6th FLOOR	B3-601	B3-602	B3-603	B3-604	B3-604
7th FLOOR	B3-701	B3-702	B3-703	B3-704	B3-704
8th FLOOR	B3-801	B3-802	B3-803	B3-804	B3-804
9th FLOOR	B3-901	B3-902	B3-903	B3-904	B3-904
10th FLOOR	B3-1001	B3-1002	B3-1003	B3-1004	B3-1004
11th FLOOR	B3-1101	B3-1102	B3-1103	B3-1104	B3-1104
12th FLOOR	B3-1201	B3-1202	B3-1203	B3-1204	B3-1204
13th FLOOR	B3-1301	B3-1302	B3-1303	B3-1304	B3-1304
14th FLOOR	B3-1401	B3-1402	B3-1403	B3-1404	B3-1404
15th FLOOR	B3-1501	B3-1502	B3-1503	B3-1504	B3-1504
16th FLOOR	B3-1601	B3-1602	B3-1603	B3-1604	B3-1604
17th FLOOR	B3-1701	B3-1702	B3-1703	B3-1704	B3-1704
18th FLOOR	B3-1801	B3-1802	B3-1803	B3-1804	B3-1804
19th FLOOR	B3-1901	B3-1902	B3-1903	B3-1904	B3-1904
20th FLOOR	B3-2001	B3-2002	B3-2003	B3-2004	B3-2004
21st FLOOR	B3-2101	B3-2102	B3-2103	B3-2104	B3-2104
22nd FLOOR	B3-2201	B3-2202	B3-2203	B3-2204	B3-2204
23rd FLOOR	B3-2301	B3-2302	B3-2303	B3-2304	B3-2304
24th FLOOR	B3-2401	B3-2402	B3-2403	B3-2404	B3-2404
25th FLOOR	B3-2501	B3-2502	B3-2503	B3-2504	B3-2504
REFUGUE AREA FLOOR					
19th FLOOR	-	-	B3-1903	-	-
CARPET AREA	-	-	573	-	-
UNIT COVERED	-	-	671	-	-
BALCONY AREA	-	-	56	-	-
BUILT UP AREA	-	-	727	-	-
SALEABLE AREA	-	-	919	-	-

Note -

1. Lawn area of 200 Sq. ft. to the flats B3-001 & B3-002 is Additionally provided.
2. Terrace area of 200 Sq. ft. to the flats B3-203 & B3-204 is Additionally provided.

EXTRA LAWN AREA WITH POOL FACING					
EXTRA LAWN AREA					
POOL FACING					
EXTRA BALCONY / TERRACE AREA					
EXTRA BALCONY / TERRACE AREA WITH POOL FACING					
TOWER B4 - 2BHK					
TYPICAL FLOORS					
CARPET AREA	705	705	712	712	712
UNIT COVERED	798	798	810	810	810
BALCONY AREA	117	117	110	110	110
BUILT UP AREA	914	914	920	920	920
SALEABLE AREA	1200	1200	1200	1200	1200
Ground FLOOR	B4-001	B4-002	-	-	-
1st FLOOR	B4-101	B4-102	-	-	-
2nd FLOOR	B4-201	B4-202	B4-203	B4-204	B4-204
3rd FLOOR	B4-301	B4-302	B4-303	B4-304	B4-304
4th FLOOR	B4-401	B4-402	B4-403	B4-404	B4-404
5th FLOOR	B4-501	B4-502	B4-503	B4-504	B4-504
6th FLOOR	B4-601	B4-602	B4-603	B4-604	B4-604
7th FLOOR	B4-701	B4-702	B4-703	B4-704	B4-704
8th FLOOR	B4-801	B4-802	B4-803	B4-804	B4-804
9th FLOOR	B4-901	B4-902	B4-903	B4-904	B4-904
10th FLOOR	B4-1001	B4-1002	B4-1003	B4-1004	B4-1004
11th FLOOR	B4-1101	B4-1102	B4-1103	B4-1104	B4-1104
12th FLOOR	B4-1201	B4-1202	B4-1203	B4-1204	B4-1204
13th FLOOR	B4-1301	B4-1302	B4-1303	B4-1304	B4-1304
14th FLOOR	B4-1401	B4-1402	B4-1403	B4-1404	B4-1404
15th FLOOR	B4-1501	B4-1502	B4-1503	B4-1504	B4-1504
16th FLOOR	B4-1601	B4-1602	B4-1603	B4-1604	B4-1604
17th FLOOR	B4-1701	B4-1702	B4-1703	B4-1704	B4-1704
18th FLOOR	B4-1801	B4-1802	B4-1803	B4-1804	B4-1804
19th FLOOR	B4-1901	B4-1902	B4-1903	B4-1904	B4-1904
20th FLOOR	B4-2001	B4-2002	B4-2003	B4-2004	B4-2004
21st FLOOR	B4-2101	B4-2102	B4-2103	B4-2104	B4-2104
22nd FLOOR	B4-2201	B4-2202	B4-2203	B4-2204	B4-2204
23rd FLOOR	B4-2301	B4-2302	B4-2303	B4-2304	B4-2304
24th FLOOR	B4-2401	B4-2402	B4-2403	B4-2404	B4-2404
25th FLOOR	B4-2501	B4-2502	B4-2503	B4-2504	B4-2504
REFUGUE AREA FLOOR					
19th FLOOR	-	-	B4-1903	-	-
CARPET AREA	-	-	573	-	-
UNIT COVERED	-	-	671	-	-
BALCONY AREA	-	-	56	-	-
BUILT UP AREA	-	-	727	-	-
SALEABLE AREA	-	-	919	-	-

Note -

1. Lawn area of 200 Sq. ft. to the flats B4-001 & B4-002 is Additionally provided.
2. Terrace area of 200 Sq. ft. to the flats B4-203 & B4-204 is Additionally provided.

Area Summary

TYPES	NUMBER OF UNITS	SALEABLE AREA (Sq. Ts.)	TOTAL SALEABLE AREA (Sq. Ts.)
4BHK UNIT	144	2680	385882
4BHK PENTHOUSE	8	4861	38891
2BHK TYPE 01	208	1200	249580
2BHK TYPE 02	188	1200	225576
1BHK UNIT	4	919	3675
TOTAL UNITS	552	TOTAL SALEABLE AREA	9,03,603

S.NO.	Description	No.'s
1	Site Open Parking (Residential)	206
2	Basement Parking	515
	Total Parking for Residential	721

Area Summary

AREA SUMMARY					
DESCRIPTION			ACRES	SQM	HECTARE
A	PLOT AREA		4.7046	19039.00	1.9039
B	PERMISSIBLE FAR @ 3	3		57117.00	
C	IGBC FAR @ 5% of B (Permissible FAR)			2855.85	
D	TOTAL PERMISSIBLE FAR (D = B+C)-(WITH GRREN BUILDING)	3.15		59972.85	
E	TOTAL PROPOSED FAR	3.148		59927.23	
F	BALANCE FAR (F=D-E)			45.62	
G	PERMISSIBLE GROUND COVERAGE @ 35%	35.00		6663.65	
H	ACHIEVED GROUND COVERAGE @ 23.66	25.61		4876.49	
I	PROPOSED BASEMENT AREA			16025.2	
J	PROPOSED STILT AREA			342.0	
K	TOTAL PROPOSED BUA			96475.21	
L	PARKING SPACE REQUIRED RESIDENTIAL @ 80 SQ M (C/80)			749	ECS
M	PARKING SPACE PROPOSED IN BASEMENT			470	ECS
N	PARKING SPACE PROPOSED IN OPEN AREA			263	ECS
O	PARKING SPACE PROPOSED IN STILT AREA			22	ECS
P	TOTAL PARKING SPACE PROPOSED (P=M+N+O)			755	ECS
Q	INDEPENDENT PARKING PROVIDED @ BASEMENT LEVEL (In No.'s)			369	No.'s
R	DEPENDENT PARKING PROVIDED @ BASEMENT LEVEL (In No.'s)			146	No.'s
S	OPEN PARKING PROVIDED for RESIDENTIAL @ SITE LEVEL (In No.'s)			206	No.'s
T	TOTAL PARKING PROVIDED (T=Q+R+S)			721	No.'s
U	PERMISSIBLE FACILITY AREA @ 15%	15%		8989.08	
V	PROPOSED FACILITY AREA	14.91%		8943.08	
W	REQUIRED LANDSCAPE AREA (50 % of OPEN AREA)			7081.25	
X	PROPOSED LANDSCAPE AREA			7083.73	
Y	PERMISSIBLE POPULATION			3046	
Z	PROPOSED POPULATION			2502	
Z1	PROPOSED CLUB AREA			1866.936	

