

Arihant Superstructures Ltd (ASL) is a leading real estate company currently listed among the premier stock exchanges like the BSE & NSE. Arihant also focuses on making quality lifestyles affordable for its discerning patrons, which epitomizes the core value of the group.

## OUR PRESENCE

Vashi | Kharghar | Panvel | Taloja | Khopoli | Karjat  
Chowk | Badlapur | Shilphata | Kalyan | Titwala

## OUR PAST HIGHLIGHTS

- ◆ 62+ Projects Delivered
- ◆ 12000+ Homes Completed
- ◆ 10.5 Million Sq. Ft. Delivered

## OUR ONGOING ENDEAVOURS

- ◆ 19 Ongoing Projects
- ◆ 14,500+ Homes Under Construction
- ◆ 16 Million Sq. Ft. Ongoing

**NO LOCK IN PERIOD | NO TRANSFER CHARGES**



**Site Address:** Survey no. 43/3/2, 59/2, 60/1/2B, B, 35/1+2/1(2), 35/1+2/1(3), 35/9+2/1(4) Ghot Village, Taluka - Panvel, Raigad 410208.

**Corporate Office:** B-Wing, 25<sup>th</sup> Floor, Arihant Aura, Plot No 13/1 -TTC Industrial Area, Thane-Belapur Road, Turbhe MIDC, Turbhe, Navi Mumbai, 400 705.

MahaRERA No.

 **022 6857 2222**

Project details available on the website:  
<https://maharera.mahaonline.gov.in>



P52000045699

Disclaimer: All specifications, drawings, amenities, facilities, parameters, rates etc. shown in this booklet are subject to change as per the approval from the respective authorities. The final discretion remains with the developers. All images are for representation purpose only. The pictures and information contained in this information memorandum could undergo a change if sanctioned plans and / or other circumstances change. For a detailed disclosure please visit the RERA website under RERA Registration No. before taking the final decision.

**ARIHANT**  
SUPERSTRUCTURES LTD.

Changing  
Lifestyle™



**TALOJA, NEAR METRO STATION**



# Welcome to Sports Club Living

Discover elevated living in the heart of Taloja with our newest addition - a 36-story tower, now the tallest in the area. Nestled within our Sporty City-themed residential project, this architectural marvel combines modern luxury with the tranquility of lush green surroundings. Immerse yourself in a dynamic lifestyle where 80% of the space is dedicated to open areas, creating a perfect balance between nature and urban living. Experience the pinnacle of sophistication and community living with panoramic views from the top of Taloja's skyline.

Representative Image



THE MAKERS OF  
NAVI MUMBAI'S TALLEST TOWERS

ARIHANT CLAN  
**AALISHAN**  
KHARGHAR ANNEXE

 *A Lifestyle Project*



Artist's Impression





Artist's Impression

ALSO CONSTRUCTING  
THE TALLEST TOWERS OF PANVEL

# ARIHANT ASPIRE

PALASPE, PANVEL



*A Lifestyle Project*

MAHARERA: P52000014107  
maharera.mahaonline.gov.in



# NOW PRESENTING THE TALLEST TOWERS OF TALOJA

**ARIHANT**  
SUPERSTRUCTURES LTD.

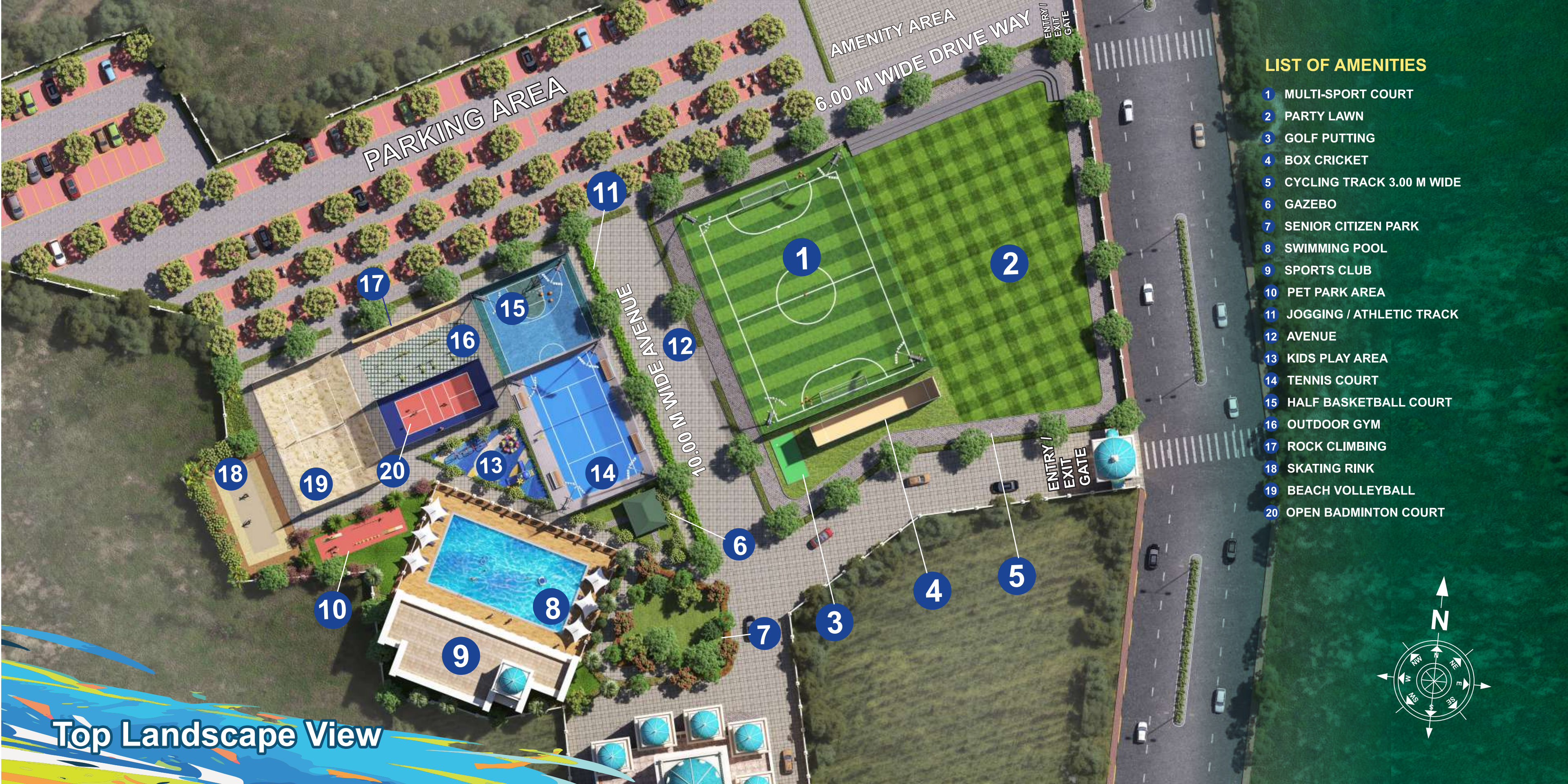
Changing™  
Lifestyle



TALOJA

- 6 Acres luxury lifestyle complex
- 80% Ground Open to Sky
- Tallest Tower in Taloja
- G+36 Storey Tower
- 1 & 2 BHK Homes
- Sports Club
- Attractive lifestyle covering fitness, fun, entertainment, conveniences and comfort





### LIST OF AMENITIES

- 1 MULTI-SPORT COURT
- 2 PARTY LAWN
- 3 GOLF PUTTING
- 4 BOX CRICKET
- 5 CYCLING TRACK 3.00 M WIDE
- 6 GAZEBO
- 7 SENIOR CITIZEN PARK
- 8 SWIMMING POOL
- 9 SPORTS CLUB
- 10 PET PARK AREA
- 11 JOGGING / ATHLETIC TRACK
- 12 AVENUE
- 13 KIDS PLAY AREA
- 14 TENNIS COURT
- 15 HALF BASKETBALL COURT
- 16 OUTDOOR GYM
- 17 ROCK CLIMBING
- 18 SKATING RINK
- 19 BEACH VOLLEYBALL
- 20 OPEN BADMINTON COURT



PARKING AREA

AMENITY AREA  
6.00 M WIDE DRIVE WAY

10.00 M WIDE AVENUE

ENTRY /  
EXIT  
GATE

ENTRY /  
EXIT  
GATE

Top Landscape View

**Aerial View**

**80%**  
**Ground Open to Sky**

**A Lifestyle Covering Sports, Fitness, Fun,  
Entertainment, Conveniences And Comfort.**

Artist's Impression



**SPORTS CLUB  
AMENITIES**





**BOX CRICKET**

Representative Image



**MULTIPURPOSE SPORTS COURT**

Especially for Football, Futsal, Box Cricket,  
Kabaddi, and Dodgeball

Representative Image



**HALF BASKET BALL COURT**

Representative Image



**ATHLETIC TRACK (JOGGING)**

Representative Image

Representative Image



**CYCLING TRACK**

Representative Image



**TENNIS COURT**

Representative Image



Representative Image

Representative Image

# SKATING RINK



Representative Image

Representative Image

# OPEN BADMINTON COURT



Representative Image

**VOLLEYBALL COURT**



Representative Image

Representative Image

**GOLF PUTTER**



# OUTDOOR AMENITIES

Artist's Impression

## ROCK CLIMBING



## SWIMMING POOL with Kids Pool



## OUTDOOR GYM



## KIDS PLAY AREA

**TREE PLAZA**  
with Gazebo Sit outs



**SENIOR CITIZEN  
AREA**



**PARTY LAWN**

**AMPHITHEATRE**







**SPORTS CLUB INTERNAL  
AMENITIES**



**Banquet Hall**



**Mini Theatre**



**Indoor Games Room**

**Gymnasium**



**Yoga & Meditation Room**



**Kid Crèche**



**Tuition Classroom**



**Business Lounge**



# Internal Amenities

- Vitrified Flooring in All Rooms
- Paint on Internal Walls
- Granite Top Kitchen Platform With SS Sink
- Aluminium Powder Coated Sliding Windows
- Concealed Plumbing
- Moulded Panel Main Door & Bedroom Doors
- Concealed Electrical Wiring With Ample Electrical Ports & Modular Switches
- Premium Quality CP Fittings & Branded Sanitary Walls
- Full Glazed Tiles In Bathrooms Upto Beam Level



# TYPICAL FLOOR PLAN (A WING)

1<sup>ST</sup> TO 6<sup>TH</sup>, 8<sup>TH</sup> TO 11<sup>TH</sup> & 13<sup>TH</sup> TO 16<sup>TH</sup> & 18<sup>TH</sup> TO 20<sup>TH</sup>

24 M ROAD FACING



TALOJA PHASE 1 FACING

# TYPICAL FLOOR PLAN (A WING)

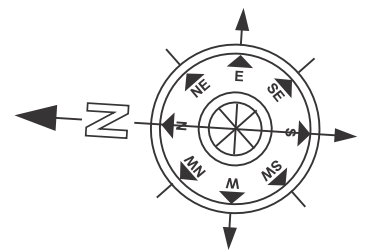
REFUGE FLOOR PLAN

7<sup>TH</sup>, 12<sup>TH</sup> & 17<sup>TH</sup>

24 M ROAD FACING



TALOJA PHASE 1 FACING



SPORTS CLUB VIEW

SPORTS CLUB VIEW

# TYPICAL FLOOR PLAN (A WING)

21<sup>ST</sup> , 23<sup>RD</sup> TO 26<sup>TH</sup> , 28<sup>TH</sup> TO 31<sup>ST</sup> & 33<sup>RD</sup> TO 36<sup>TH</sup>

24 M ROAD FACING



TALOJA PHASE 1 FACING

# TYPICAL FLOOR PLAN (A WING)

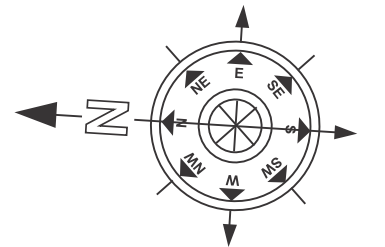
REFUGE FLOOR PLAN

22<sup>ND</sup> , 27<sup>TH</sup> & 32<sup>ND</sup>

24 M ROAD FACING



TALOJA PHASE 1 FACING



SPORTS CLUB VIEW

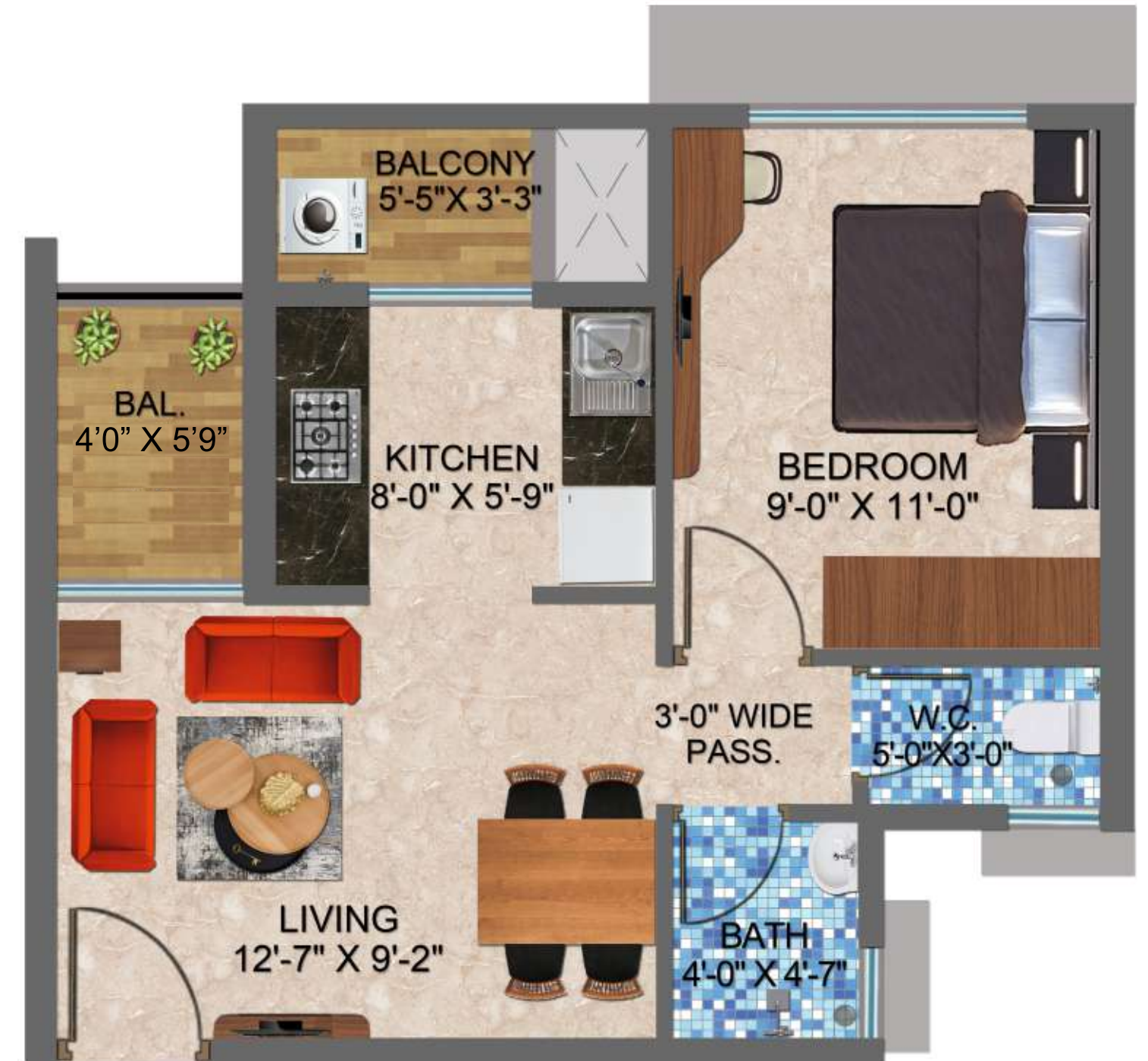
SPORTS CLUB VIEW

1 BHK UNIT PLAN (TYPE A)



1 BHK UNIT PLAN (TYPE A)

(WITH TERRACE)

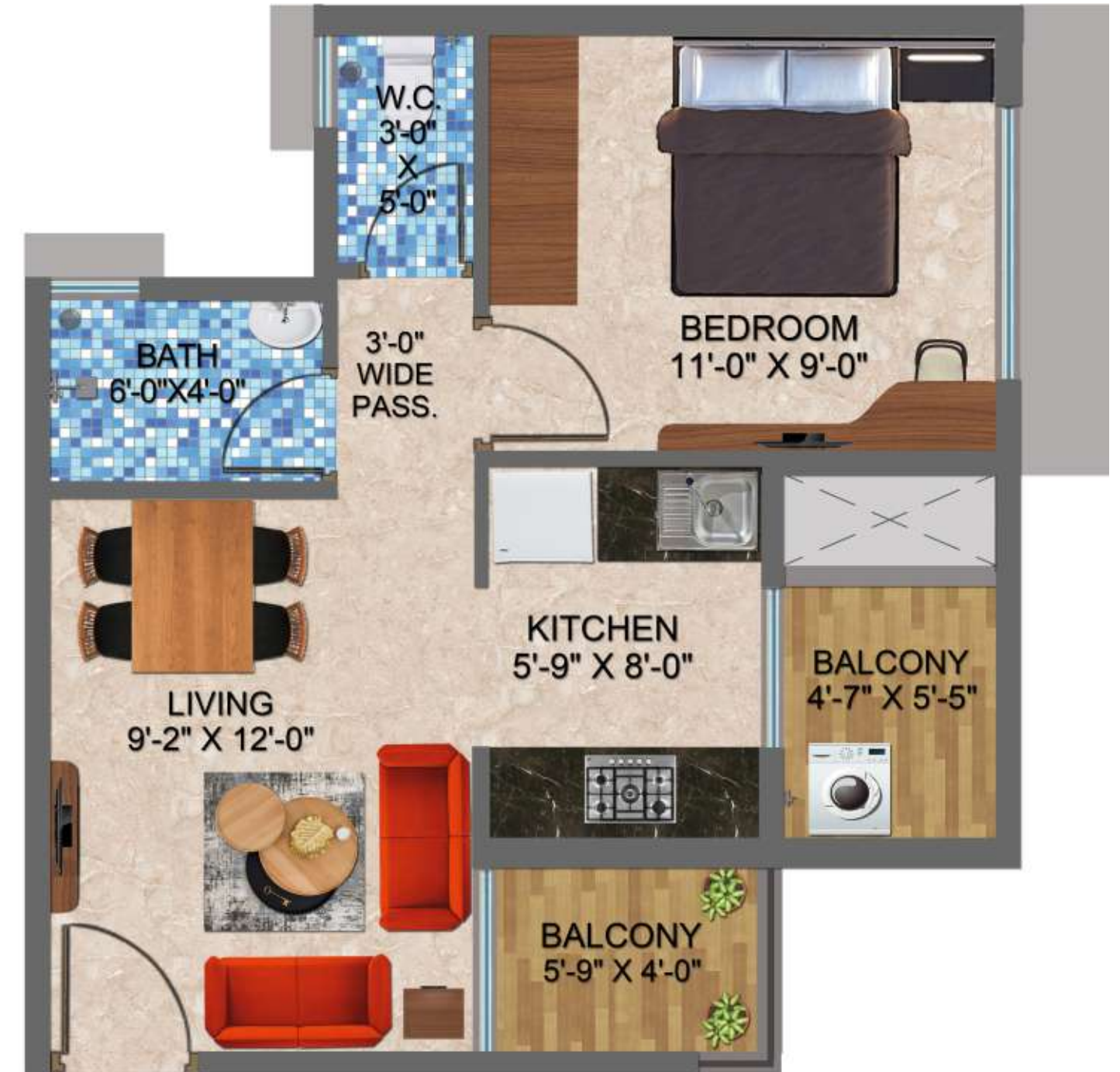


1 BHK UNIT PLAN (TYPE B)



1 BHK UNIT PLAN (TYPE B)

(WITH TERRACE)





1 BHK UNIT PLAN (TYPE C)

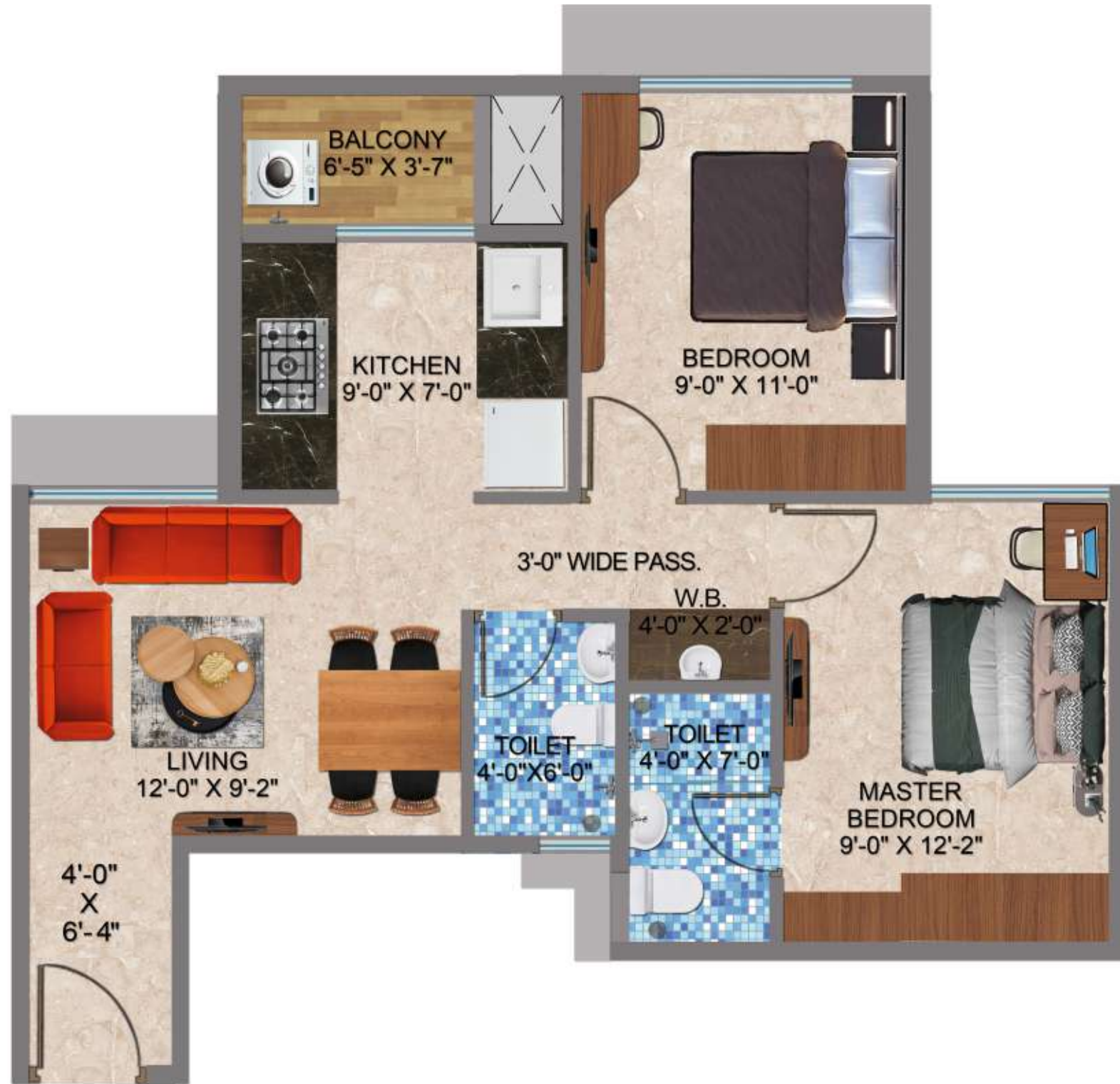


1 BHK UNIT PLAN (TYPE C)

(WITH TERRACE)



2 BHK UNIT PLAN (TYPE A)



2 BHK UNIT PLAN (TYPE A)

(WITH TERRACE)





TALOJA METRO STATION



NAVI MUMBAI INTERNATIONAL AIRPORT



KHARGHAR CORPORATE PARK



SUPER MARKETS



Taloja, Near Metro Station  
Navi Mumbai

## Infrastructural & Economic Development In Taloja

Taloja is the fastest developing locality of Navi Mumbai offering top-level infrastructure managed by the Panvel City Municipal Corporation & connectivity via metro railway, road & air. It is the most preferred address providing futuristic development & investment opportunities.

Disclaimer: All specifications, drawings, amenities, facilities, parameter etc., shown in this leaflet are subject to change as per the approval from the respective authorities. The final discretion remains with the developers.



UPCOMING KHARGHAR FLYOVER



IT DATA CENTRE BY MIDC



MUMBAI PUNE EXPRESSWAY



EDUCATIONAL HUB WITH SCHOOL, COLLEGES & UNIVERSITIES



SPIRITUAL WORSHIP PLACES NEARBY



ATAL SETU



**UNLOCK YOUR  
ACTIVE LIFESTYLE**

## Location with Great Connectivity

