

a lifestyle of **HAPPINESS**

# Raj Bunglows

3 BHK Lifestyle Bunglows @ Segvi





## ECSTASIES WITH BLOSSOMS...

Clean and sufficiently capacious peaceful seating with fragrant flowers, leaves shedding sounds with bird chirpings and more of such will be received by you right from the first time you move towards the luxury your habitat spaces.







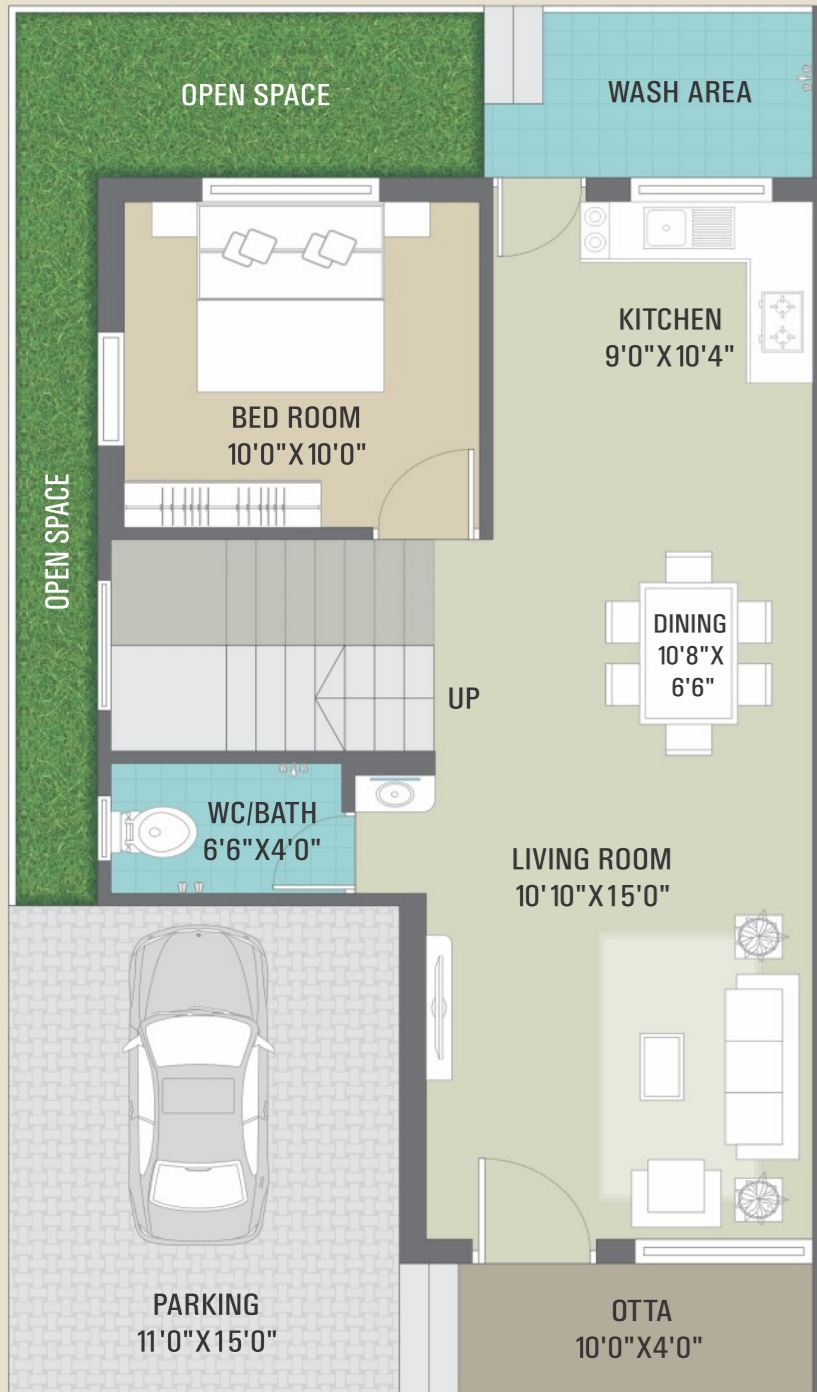
# Raj Bunglows

An open Treat To...

## **MAGNIFICENCE** SPREAD EVERYWHERE

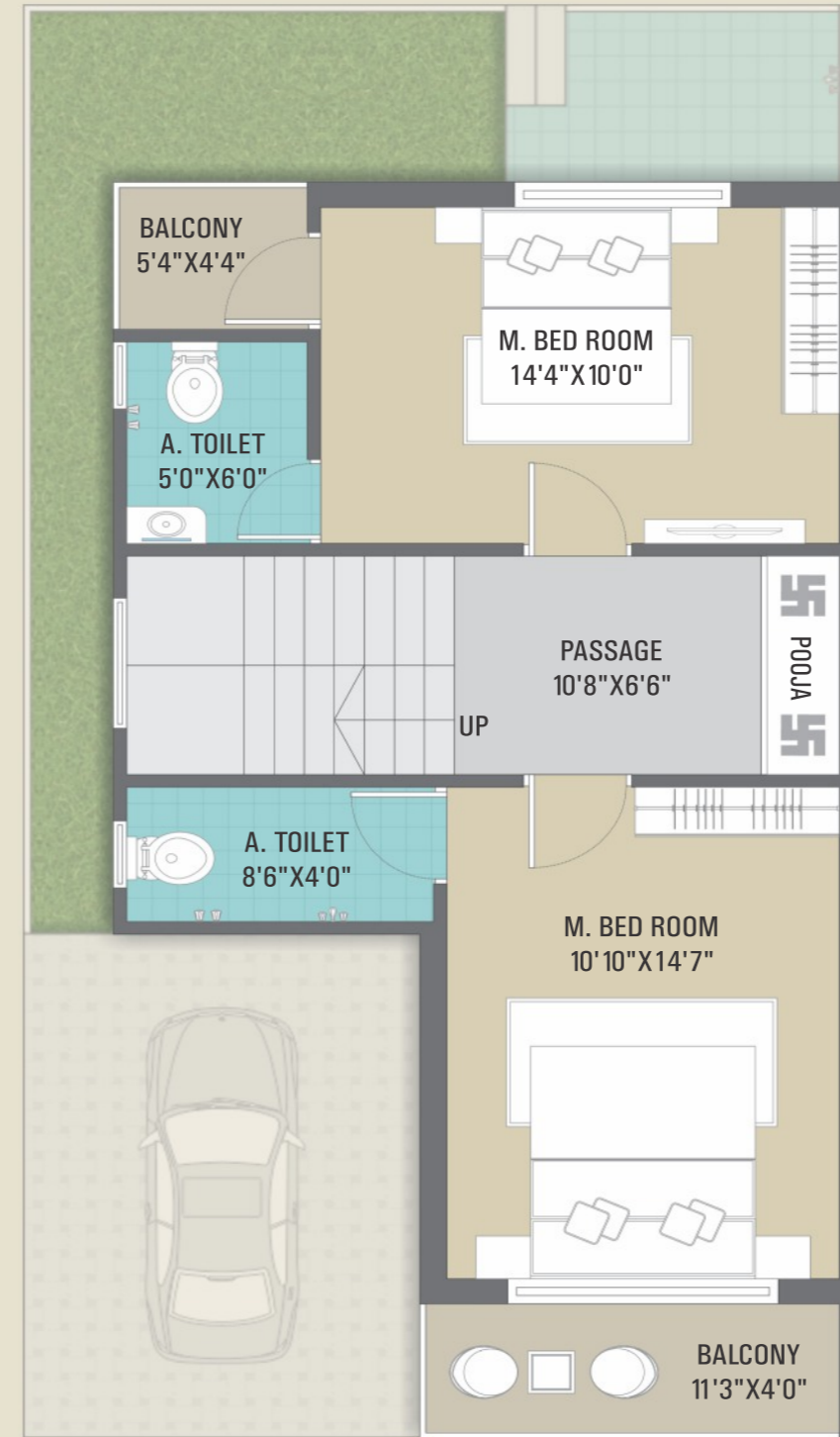
Wherever your vision goes, it's the most happening culture which you will be pleased to believe is all yours and you can enjoy it all your life for every moment at every hour of the day with complete satisfaction.





**GROUND FLOOR PALN**

**Section Plan**



**FIRST FLOOR PALN**

**Section Plan**



## AMENITIES



**Flooring :**  
600 x 600 mm vitrified floor tiles in all rooms & anti-skid flooring in toilet & attached terraces.



**Doors :**  
Laminated flush door for main door with designer fittings and FRP doors for toilet doors.



**Plaster :**  
External - Sand faced finish Internal - Neeru / Mala finish.



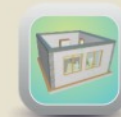
**Painting :**  
Inside Birla Putty and Outside Acrylic Paint.



**Plumbing :**  
Concealed CPVC/PPR/GI plumbing.



**Kitchen :**  
Granite kitchen platform with stainless steel sink.



**Structural Design :**  
R.C.C. Earth quake resistant structure.



**Windows :**  
Powder coated aluminium sliding windows with granite frame.



**Bathroom :**  
Designer concept wall tiles and modular designed C.P. fittings in all toilets.



**Electrification :**  
Concealed electrification with single phase connection, TV & Telephone points provision in hall & master bed room, Split A.C. point provision in master bed room.

## SPECIFICATIONS & AMENITIES

- Elegant Elevation For Bungalow.
- Latest Range Of Vitrified Flooring In All Rooms.
- Granite Kitchen Platform With SS Sink.
- Concealed Copper Wiring & Fitting With Modular Switches.
- Exclusive Landscaped Garden With Childrens Play Area.
- Ample Car Park Space For Each bungalow.
- Entrance Gate.
- Camera At Entry Gate.
- Uninterrupted Water Supply With Common Bore Wells.



### DISTANCE :

• Tithal Beach	: 1.5 Km	• Medical College	: 1.00 Km	• Railway station	: 5.00 Km
• Sai Mandir	: 1.00 Km	• Jay Ambe School	: 2.00 Km	• Bus Stop	: 4-5 Km

Note : This Brochure Is Purely Conceptual & Not A Legal Offering. The Developers Reserves All Right To Amend The Layout, Plans, Elevation, Specifications, Amenities Etc.

# Raj Bunglows



ARCHITECT



OFFICE ADDRESS

**"Raj Bunglows"**

Behind Sarvoday School, Ahirvad Road,  
Segvi - 396 007, Taluka - Valsad, Dist. Valsad.

BOOKING CONTACT

**93775 45389, 99981 92679, 98249 86831**