

# DOSTI

— LEGACY —

Project By:



Saish Group

*We Build Dreams. Not Just Homes*

Site Add.: Saish Group Sales Office, S. No.: 45, Sonarpada, Near Sai Baba Mandir, Dombivli (E) 421 201

Office Add.: Shop No. 1, Vijay Kunj Apt., Near Abhinav Vidhyalaya, Sagarli, Dombivli (E) 421 201

Contact no.: +91 9594 502 424 / 8369 684 411 / 7738 676 846 | Email ID: saishgroup@yahoo.com

RCC Engineer

Pentacon Structural  
Consultancy Pvt.Ltd.

Architect:

Mr. Dhiraj Bharat Patil

3D Visualizer & Elevation:

Aim Render

Disclaimer: The information, plans, images, drawings, amenities and feature contained in this brochure are only indicative of the kind of the development proposed. Subject to approval of the respective authorities & continuing improvement, the developers reserve the right to alter the layout plans & make changes to the specification or features without prior or obligation.

AIM RENDER- +91 98198 33307

Project By:



Saish Group

*We Build Dreams. Not Just Homes*

*Live the Legacy. Build the Future!*



# Saish Group

“

## Redesigning the Idea of Home & Community

At Saish Group, every blueprint begins with a question: What will this space mean to those who live here? It's not about erecting tall towers or laying perfect tiles—it's about infusing every corner with purpose and care. With bold ideas and an unfaltering focus on sustainability, we craft spaces where families grow, neighbours connect, and communities thrive. It's more than construction—it's about creating meaningful chapters in the tale of urban life.

”



**500+**

Families Delighted



**30+**

Completed Projects



**15**

Esteemed Partners



## Completed Projects

SAISH PLAZA  
Dombivli



VENKATESH DARSHAN  
Dombivli



TIRUPATHI DARSHAN  
Dombivli



BALAJI DARSHAN  
Dombivli



SWARA- SAIRA PALACE  
Dombivli



SAISH ENCLAVE  
Dombivli



SAISH SAVITRI VILLA  
Dombivli



## Ongoing Projects

DOSTI IMPERIAL  
Manpada Road, Dombivli (E)



SAISH SHAURYA ELITE  
Nr. Woodland Showroom, Dombivli (E)



OMKAR HEIGHTS  
Nr. Kalavati Aai Mandir, Dombivli (E)



**A LEGACY THAT CONNECTS YOUR VISION**  
to extraordinary possibilities.

The Saish journey is written in milestones. Completed projects stand as symbols of fulfillment, offering residents the address they deserve. Ongoing developments are a reflection of our momentum, moving ever closer to creating vibrant spaces that blend aspiration with purpose.

## Upcoming Projects



# Location Map



# DOSTI — LEGACY —

A LEGACY OF BEING  
at the center of it all.



**RAILWAY STATIONS**  
 Sonarpada Metro Station - 1 min  
 Dombivli Railway Station - 8 min  
 Kopar Station - 10 min  
 Kalyan Junc - 15 min



**COLLEGES**  
 SIA College of Higher Education - 5 min  
 KV Pendharkar - 6 min  
 Shivajirao Jondhale College - 5 min



**COMMERCIAL SHOPPING HUB**  
 R-mall - 5 min  
 Xperia mall - 8 min  
 Metro mall - 10 min



**HOSPITALS**  
 Aims Hospital - 5 min  
 Icon Hospital - 5 min  
 RR Hospital - 5 min



**SCHOOL**  
 Omkar International School - 3 min  
 Narayana E-techno School - 6 min  
 CP Goenka International School - 6 min  
 Ryan International School - 7 min  
 Orchid International School - 7 min



**BANKS**  
 ICICI - 3 mi  
 Axix - 3 min  
 DNSB - 2 min  
 HDFC - 3 min



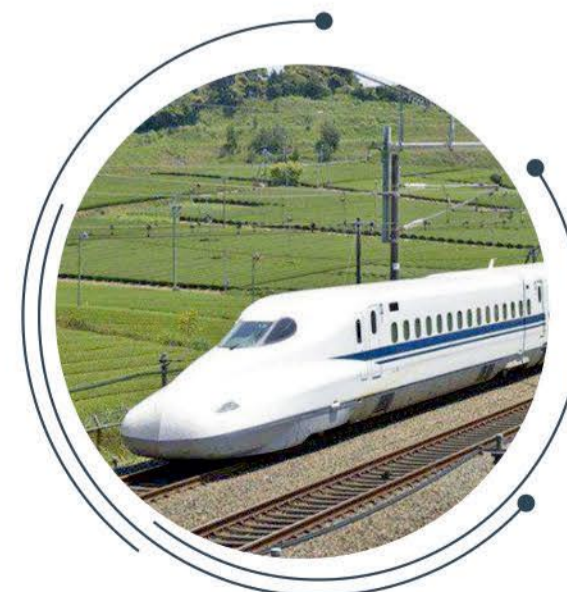
METRO 12 KALYAN - TALOJA  
METRO 14 BADLAPUR - AIROLI



NAVI MUMBAI  
INTERNATIONAL AIRPORT



AIROLI - KATAI NAKA  
FREEWAY



MUMBAI AHMEDBAD  
BULLET TRAIN

# A LEGACY THAT BRINGS Dombivli's dreams to life.

Dombivli's story is one of transformation and resilience. From its historic charm to its emerging modern skyline, the city offers a signature way of being for dreamers and doers alike. With every street humming with energy and future prospects, this city is not just a place to live; it's a place to thrive.

# DOMBIVLI



# A LEGACY WHICH REDEFINES city living from new heights.



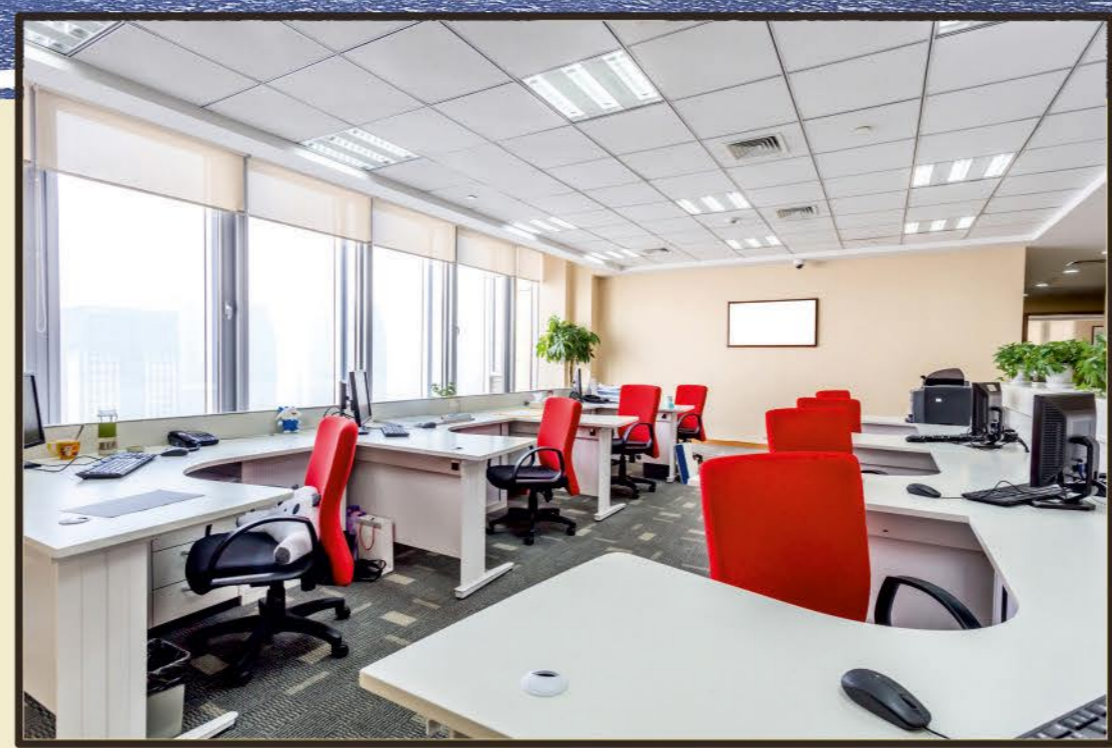
At Dosti Legacy, the elevation gives you a front-row seat to the city's transformation. As the skyline expands and the metro line advances, you'll have a ringside view of it all from your 1&2BHK apartments. The beauty of the area is matched only by the convenience of the metro, bringing the city closer to you—without the hassle.



Artistic Impression

## A LEGACY THAT SEAMLESSLY BLENDS work, retail, and success.

Retail on the ground, offices above. At Dosti Legacy, we've created a space where everything you need is just a step away. Whether you're grabbing your morning coffee or closing an important business deal, everything you need is right at your doorstep.





“

## A LEGACY THAT INVITES YOU to a world of open elegance.

Double-height ceilings, elegant finishes, and a sense of openness—you'll know you've arrived in a world of legacy the moment you step in. With its double-height ceilings and carefully crafted design, the lobby is a statement of what lies beyond—each detail invites you to relax, unwind, and take in the grandeur of your surroundings.

”

**DOSTI**  
—LEGACY—



# A LEGACY OF BALANCE, blending luxury with practicality.

---



## Calm

In a world full of distractions, this space offers a rare stillness. Here, quiet is more than a pause—it's a powerful force that invites you to embrace peace and find serenity in every moment.

## Culture

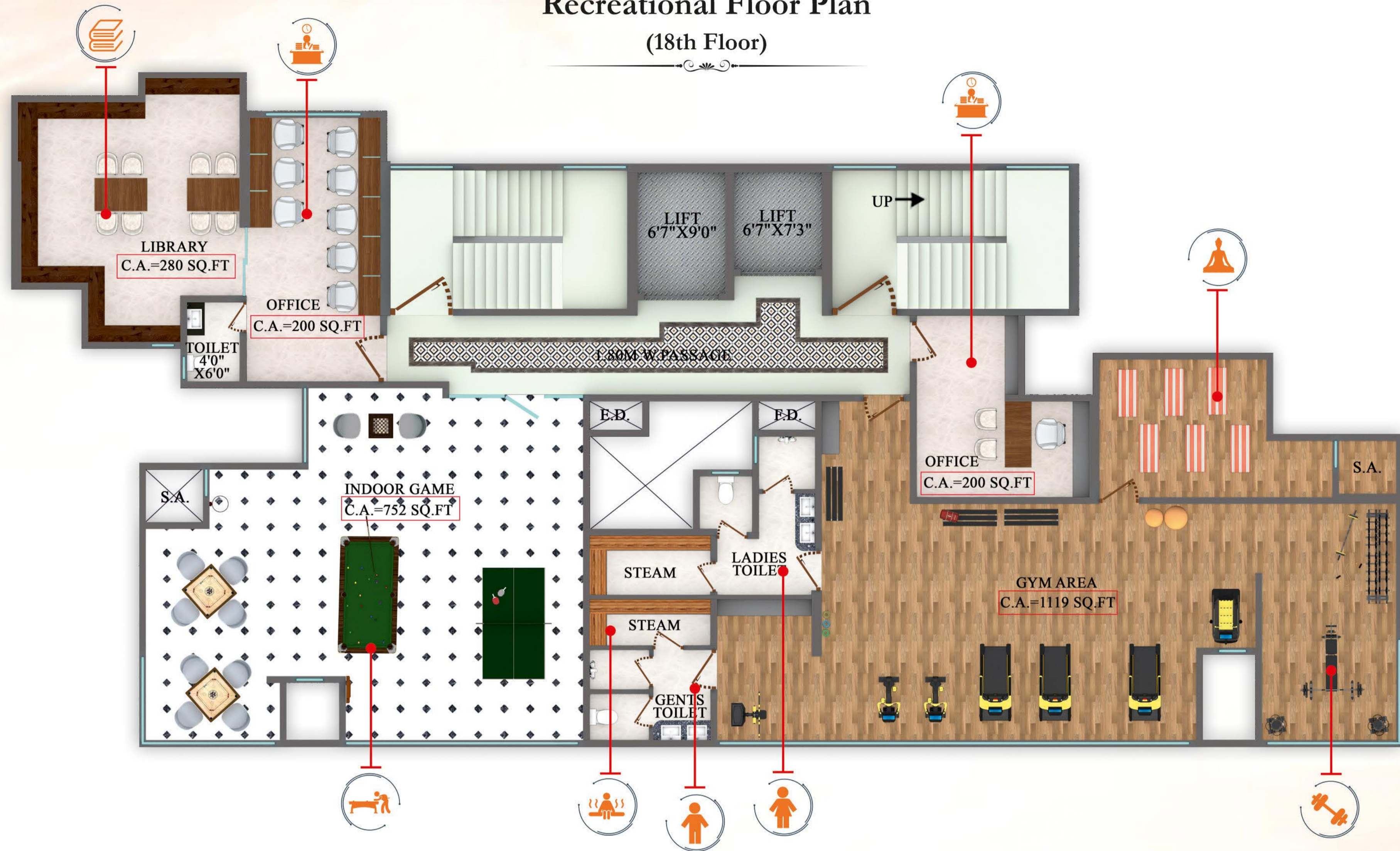
Rooted in tradition and the spirit of the community, this space celebrates the living essence of culture. It is a vibrant reflection of local heritage that infuses every corner, shaping an atmosphere of connection and belonging.

## Cohesion

Where unity thrives, the design creates an environment where people come together effortlessly. This space fosters natural connections, with each element flowing seamlessly, building an atmosphere of collective energy and balance.



## Recreational Floor Plan (18th Floor)



## A LEGACY CRAFTED TO enchant, energize, and exhilarate.

Step into a space that effortlessly combines relaxation and functionality. The recreational floor offers a library for the mind, a gym for the body, and indoor games to challenge your spirit. Advanced elevators take you to your destination with ease, while large passages make moving through the floor a breeze.



### Indoor Games Area

The indoor games area is a space where competition and camaraderie meet.



### Library Corner

In this calm, contemplative space, the library becomes your personal oasis.



### Elite Training Facility

Designed for those who value both strength and well-being, the gym is a place to challenge yourself and push your limits.



### Dynamic Workspaces

These office spaces provide the perfect backdrop for ambition and focus.



“

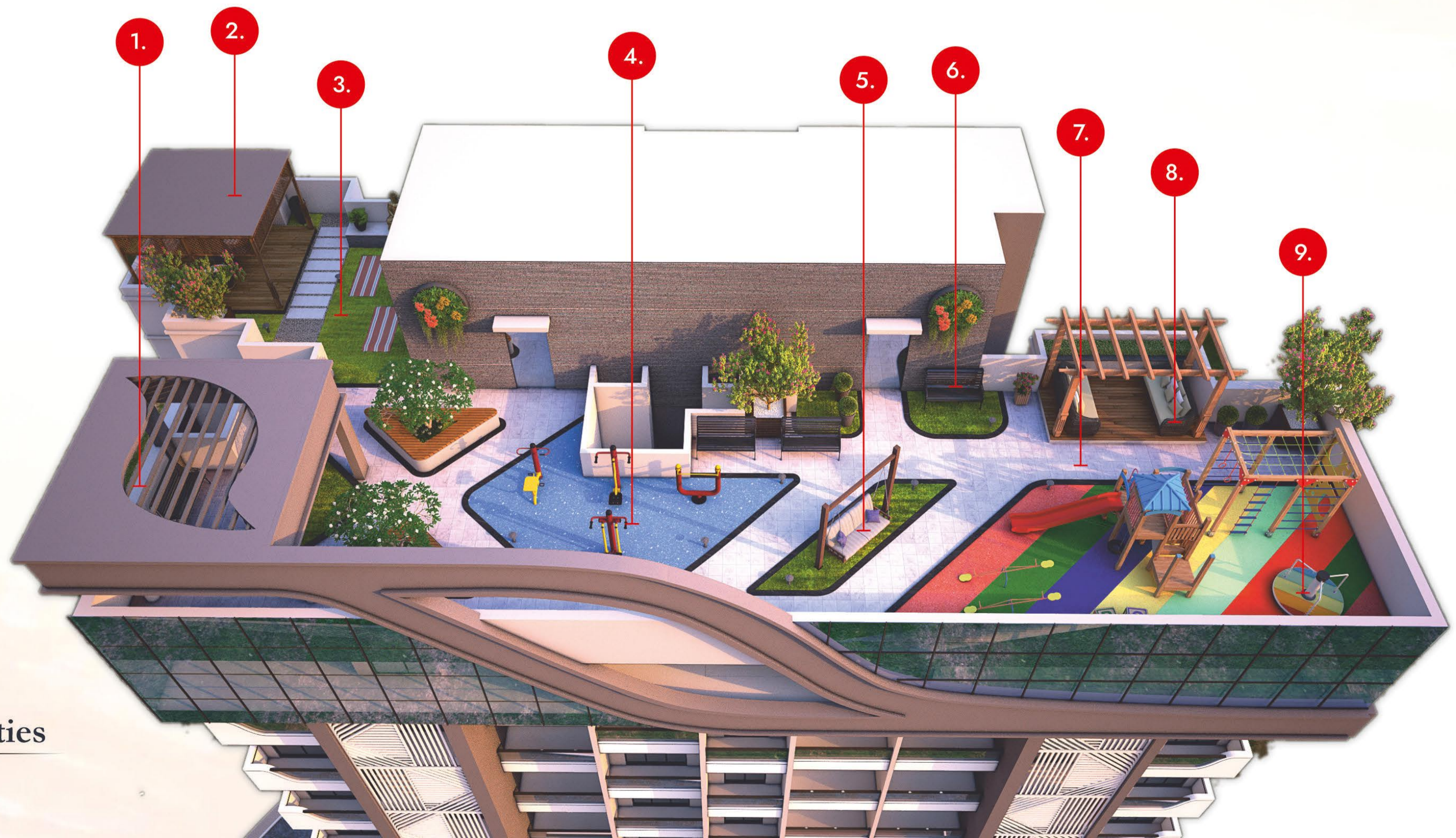
## A LEGACY WHERE

every sunrise and sunset is yours to cherish.

The rooftop offers a variety of spaces to refresh both body and mind. Start your day with mindfulness in the yoga corner, then relax in the pergola or enjoy a chat in the chit-chat space. The seating area provides a casual vibe, while the kids' play area offers a safe space to explore. Stay active with a leisurely stroll on the walking track or a workout in the open gym.

”

1. Pergola Seating
2. Gazebo
3. Yoga & Meditation
4. Open Gym
5. Adult Swing
6. Chit-Chat Corner
7. Walking Track
8. Adult Seating Area
9. Kids Play Area



### Roof Top Amenities

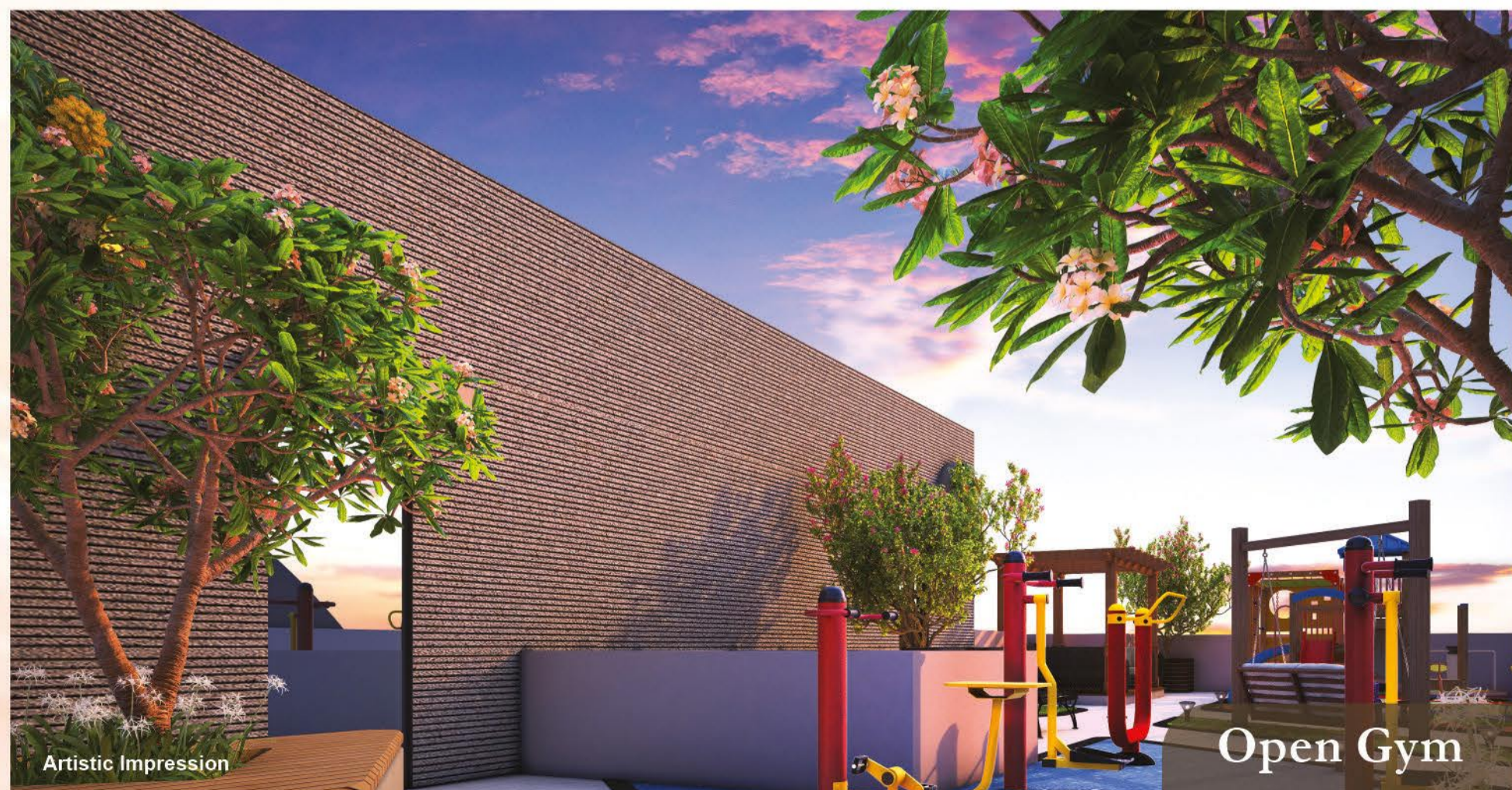
# A LEGACY BLENDING POISE, power, and pleasant experience with every step.

Up on the rooftop, a serene space invites you to slow down and center yourself in the meditation area. The open gym energizes the body and mind, while just nearby, the children's play zone creates a safe, lively environment for young adventurers to scout, smile, and shine.



Artistic Impression

Meditation Area



Artistic Impression

Open Gym

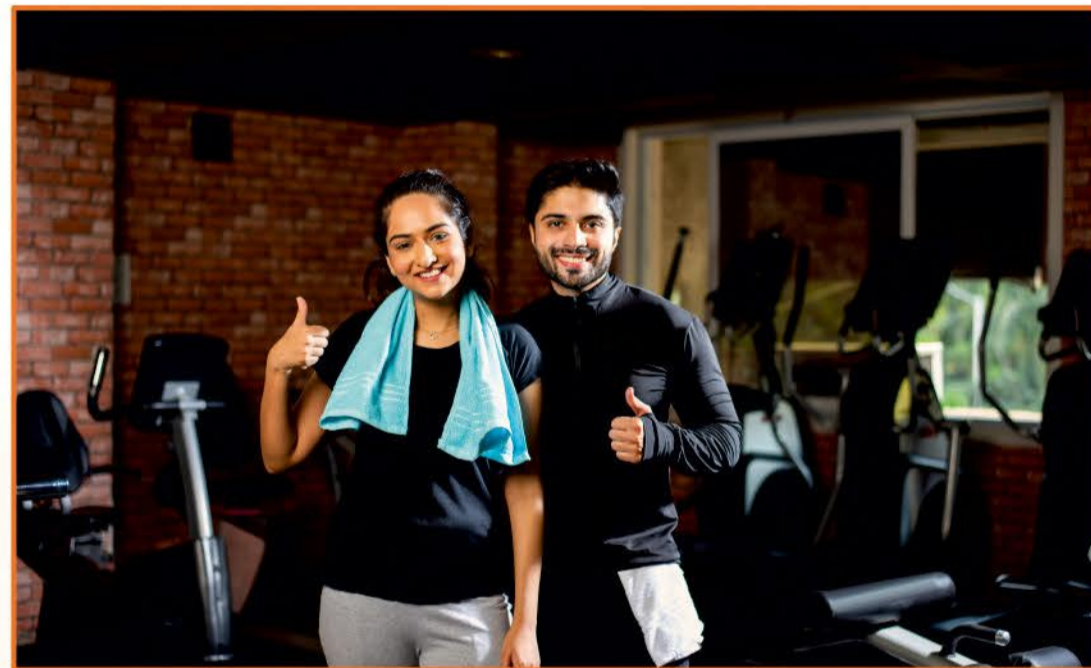


Kid's Play Area

Artistic Impression

# A LEGACY BUILT ON THE FOUNDATION of an unmatched internal luxury.

At the heart of every detail in Dosti Legacy is a reflection of your personality. The modular kitchen makes cooking a joy, while the durable fittings offer lasting dependability. The architectural façade welcomes you into a space of elegance.



## Building Structure:

- « Earthquake Resistant R.C.C. Structure Wall Carved Exterior and Eye-catching Elevation.
- « Anti-termite Treatment for the Entire Building.
- « Maximum Ventilation for Fresh Breeze and Optimum Sunlight.
- « Reputed Elevator with Power Backup.



## Doors & Window:

- « Elegant Main Door with Teak Wood/Eko Timber Frame.
- « Both Side Laminate Flush Doors for Bedroom with Eko Timber / Teak Wood Frames.
- « Anodized Aluminium Sliding Window/ G.I. Powder Coated Windows with Built in Grills.
- « Granite/Marble Window Sills.



## Kitchen:

- « Designer Ceramics Tiles above Kitchen Platform up to Ceiling Level.
- « Granite Platform with Stainless Steel Sink.
- « Vitrified Flooring/PGVT.
- « Provision for Exhaust Fan in kitchen & toilet.
- « Provision for dish washer



## Walls, Ceilings & Paints:

- « Plastic Paint with POP Finish on Internal Walls.
- « Acrylic Paint for Exterior Walls.



## Fire Fighting System:

- « Fire Hydrant and Alarm System.
- « Fire Escape According to Municipal Norms.



## Flooring & Tiles:

- « Premium Large Size Flooring Tiles for all Rooms.



## Electrical Fitting:

- « Sufficient Electrical Points with Branded Modular Switches.
- « Concealed, Fire-resistant High Quality Copper Wiring AC, TV and Telephone Points.



## Security Features:

- « CCTV at the Entrance Gate and Entrance Lobby. Common areas.



## Parking:

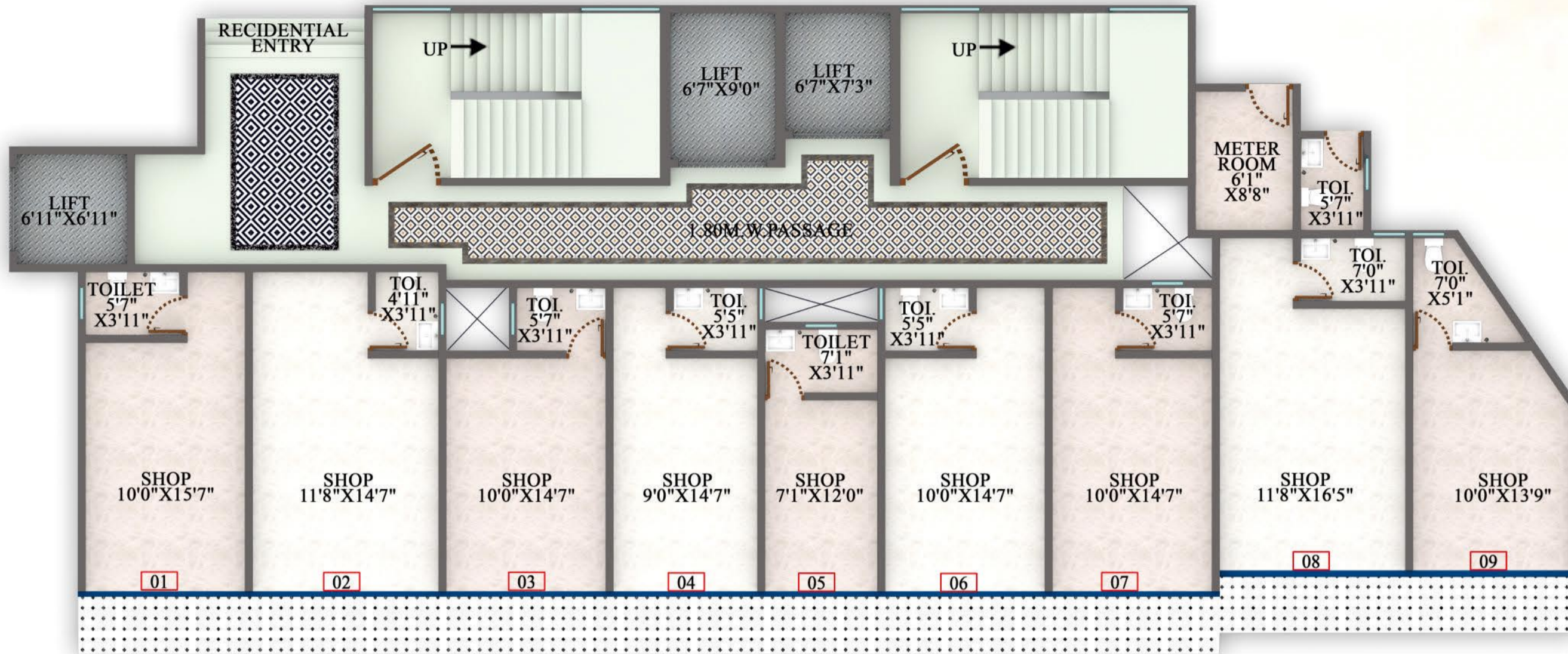
- « Parking Tower.
- « Easy to Drive-in and Drive-out.



## Toilet:

- « Designer Ceramic Tiles upto Ceiling Level.
- « Single Lever Diverter for Hot and Cold Water.
- « Concealed Plumbing with Modern.
- « Fittings of Reputed Brand.
- « Hot and Cold Water Mixer.



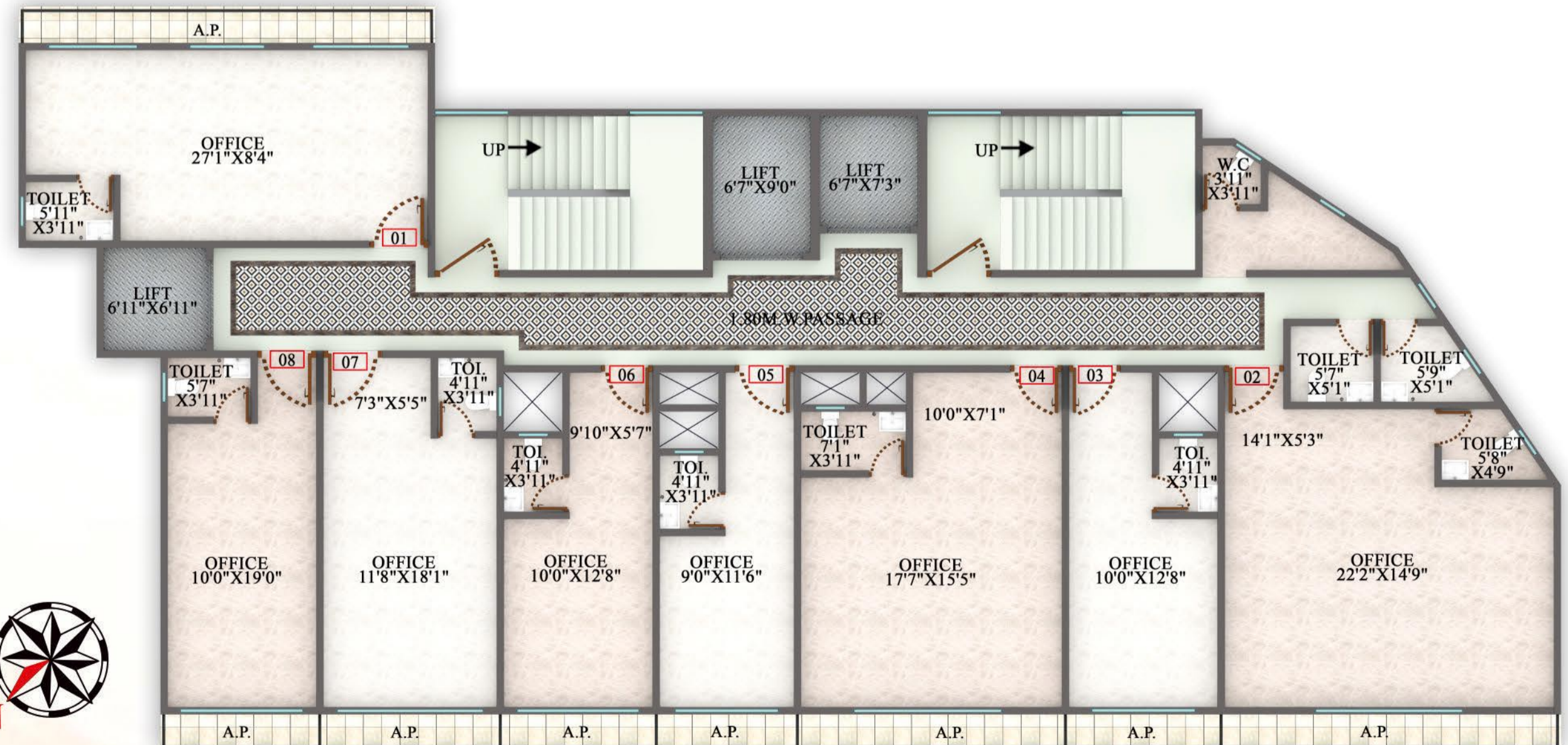


## Ground Floor Plan

SHOP NO.	TYPE	CARPET AREA (SQ.FT)	TOTAL AREA (SQ.FT)	BUILT UP AREA CARPET	SALEABLE AREA (SQ.FT)
1	SHOP	200.21	200.21	400.42	400.00
2	SHOP	233.04	233.04	466.08	465.00
3	SHOP	170.72	170.72	341.44	340.00
4	SHOP	171.69	171.69	343.38	345.00
5	SHOP	115.71	115.71	231.42	230.00
6	SHOP	190.42	190.42	380.84	380.00
7	SHOP	190.42	190.42	380.84	380.00
8	SHOP	242.62	242.62	485.24	485.00
9	SHOP	168.24	168.24	336.48	335.00

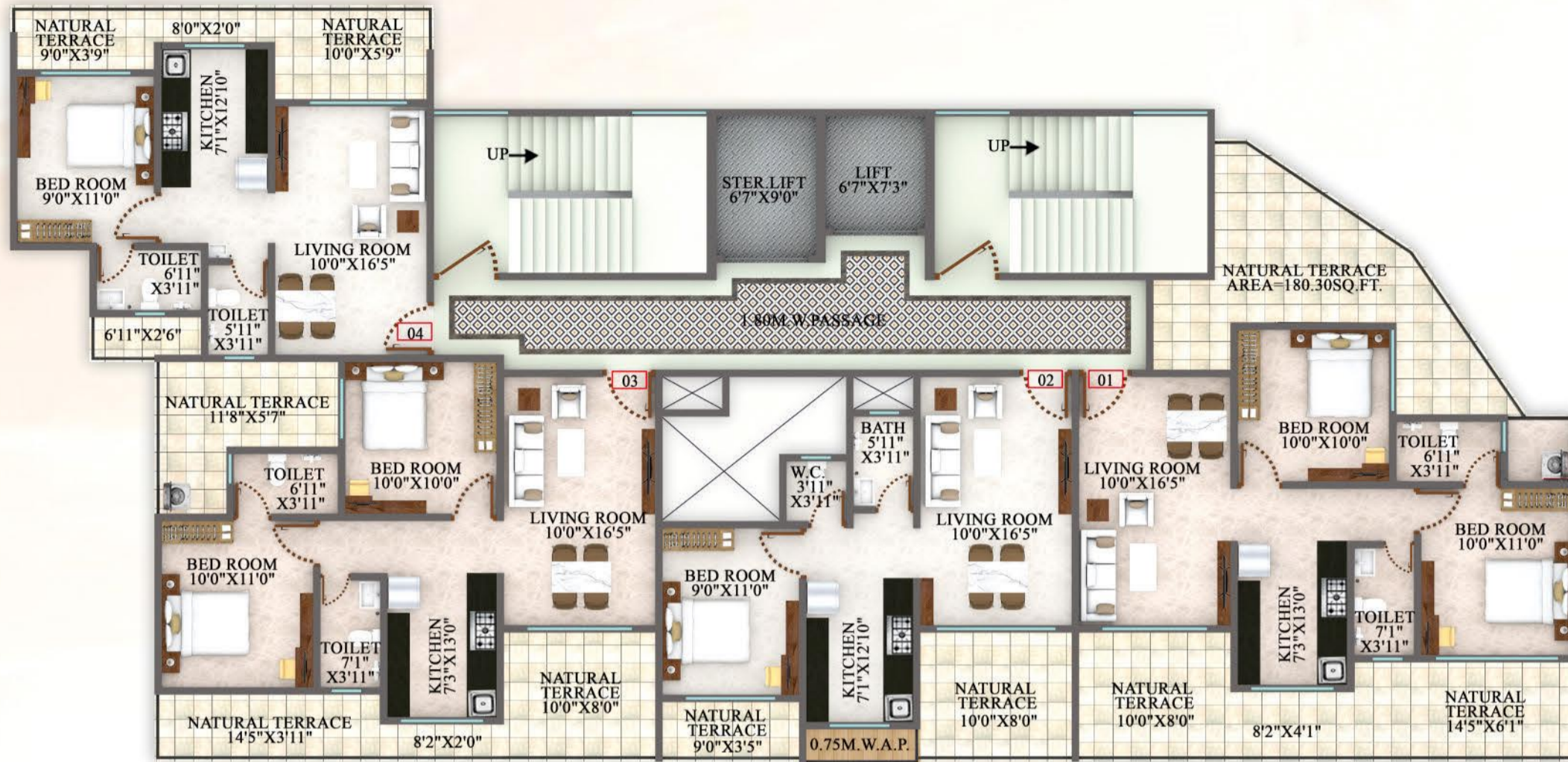
## 1st & 2nd Floor Plan

FLAT NO.	TYPE	RERA CARPET AREA (SQ.FT)	BUILT UP AREA CARPET	PROJECTION (SQ.FT)	SALEABLE AREA (SQ.FT)
101, 201	OFFICE	348.22	557.15	53.28	610.00
102, 202	OFFICE	445.31	712.50	43.59	755.00
103, 203	OFFICE	207.21	331.54	19.70	350.00
104, 204	OFFICE	376.52	602.43	34.55	635.00
105, 205	OFFICE	179.97	287.95	17.76	305.00
106, 206	OFFICE	207.21	331.54	19.70	350.00
107, 207	OFFICE	275.13	440.21	22.93	465.00
108, 208	OFFICE	236.59	378.54	19.70	400.00



1. RERA Carpet Area includes internal walls area along with room dimensions mentioned.
2. Minor variations up to (+/-) 3% in actual carpet area may occur on account of site conditions/ columns/ finishes.
3. In toilets the carpet area is inclusive of ledge wall (if any)





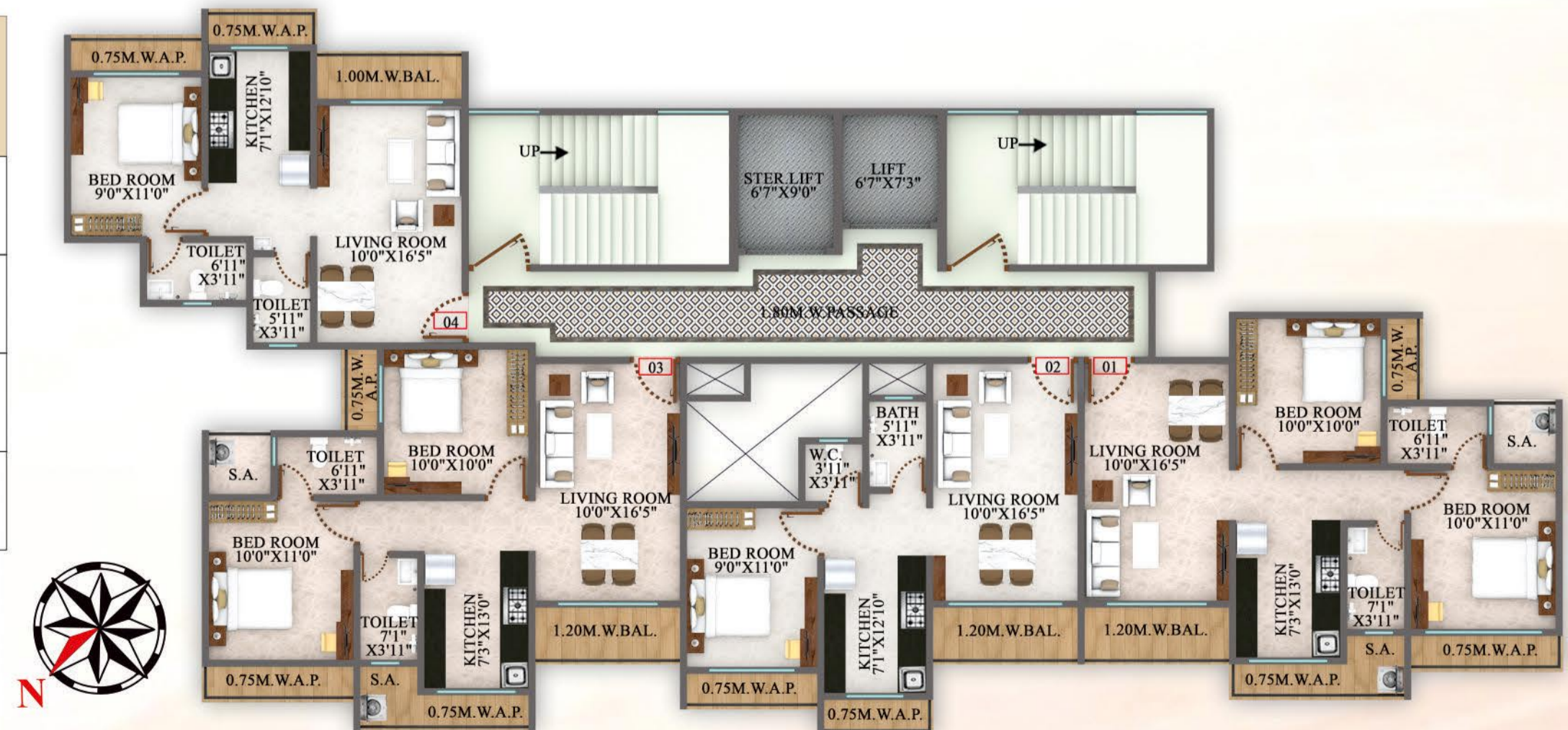
## Third Floor Plan

FLAT NO.	TYPE	RERA CARPET AREA (SQ.FT)	BALCONY (SQ.FT)	TOTAL (SQ.FT)	BUILT UP AREA TOTAL	PROJ. (SQ.FT)	S.A. (SQ.FT)	NAT. TERR. (SQ.FT)	SALEABLE AREA (SQ.FT)
301	2BHK	569.20	00	569.20	825.34	00	16.79	382.23	1225.00
302	1BHK	416.14	00	416.14	603.40	13.88	00	111.52	730.00
303	2BHK	569.20	00	569.20	825.34	00	00	237.24	1065.00
304	1BHK	430.45	00	430.45	624.15	00	00	124.22	750.00

## Typical Floor Plan (4th, 5th, 7th To 10th, 12th To 15th & 17th Floor)

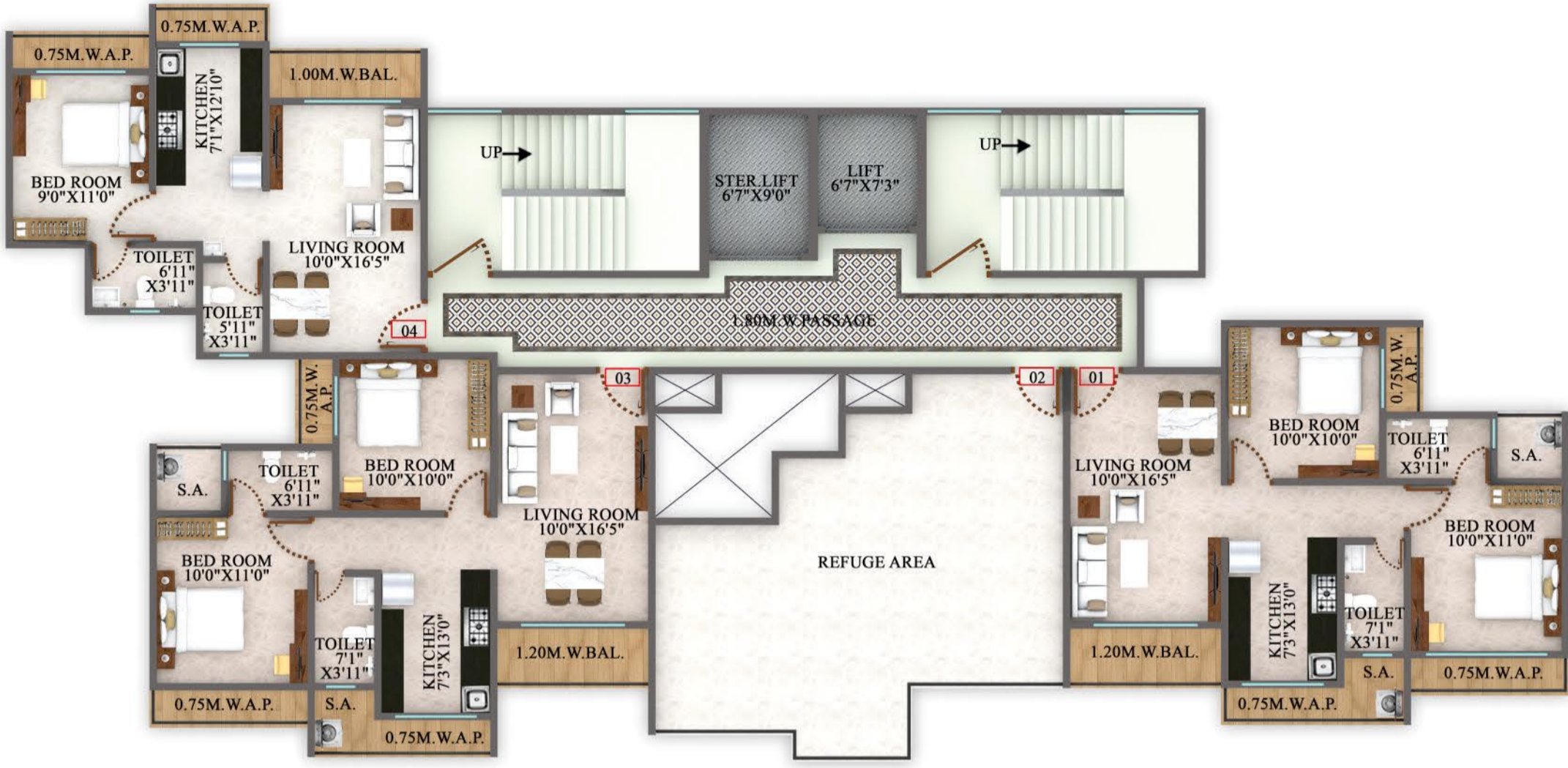
FLAT NO.	TYPE	RERA CARPET AREA (SQ.FT)	BALCONY (SQ.FT)	TOTAL (SQ.FT)	BUILT UP AREA TOTAL	PROJ. (SQ.FT)	S.A. (SQ.FT)	SALEABLE AREA (SQ.FT)
401, 501, 701-1001, 1201-1501, 1701	2BHK	576.09	34.44	610.53	885.27	44.89	32.29	960.00
402, 502, 702-1002, 1202-1502, 1702	1BHK	422.92	34.44	457.36	663.17	31.65	00	695.00
403, 503, 703-1003, 1203-1503, 1703	2BHK	576.09	34.44	610.53	885.27	44.89	32.29	960.00
404, 504, 704-1004, 1204-1504, 1704	1BHK	437.02	27.88	464.90	674.11	31.65	00	705.00

1. RERA Carpet Area includes internal walls area along with room dimensions mentioned.
2. Minor variations up to (+/-) 3% in actual carpet area may occur on account of site conditions/ columns/ finishes.
3. In toilets the carpet area is inclusive of ledge wall (if any)





# Typical Floor Plan (6th, 11th, 16th Floor)



FLAT NO.	TYPE	RERA CARPET AREA (SQ.FT)	BALCONY (SQ.FT)	TOTAL (SQ.FT)	BUILT UP AREA TOTAL	PROJ. (SQ.FT)	S.A. (SQ.FT)	SALEABLE AREA (SQ.FT)
601, 1101, 1601	2BHK	576.09	34.44	610.53	885.27	44.89	32.29	960.00
602, 1102, 1602	1BHK	REFUGE AREA						
603, 1103, 1603	2BHK	576.09	34.44	610.53	885.27	44.89	32.29	960.00
604, 1104, 1604	1BHK	437.02	27.88	464.90	674.11	31.65	00	705.00

1. RERA Carpet Area includes internal walls area along with room dimensions mentioned.
2. Minor variations up to (+/-) 3% in actual carpet area may occur on account of site conditions/ columns/ finishes.
3. In toilets the carpet area is inclusive of ledge wall (if any)



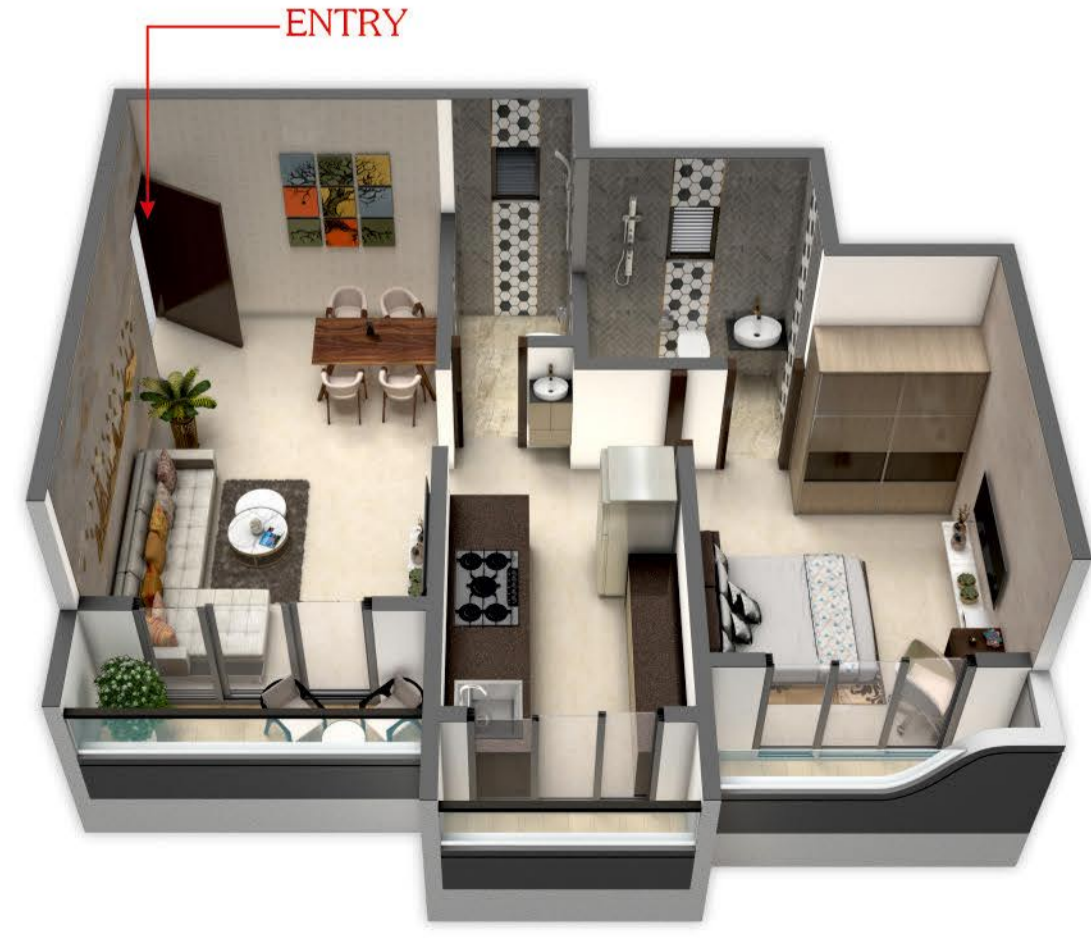
### Flat No 01 - 2BHK



### Flat No 02 - 1BHK



### Flat No 03 - 1BHK





**A LEGACY THAT LINKS YOUR STORY**  
with a thriving future.

Life is about connections—between family, friends, and community. It's about finding a place where each day offers something to celebrate, where memories are built and shared. As the city around you evolves, the home you've created within it becomes the foundation for new experiences, growing stronger with time. This is the essence of Dosti Legacy, where every generation creates its story.

DOSTI LEGACY

CLASSICAL SUNTRACK KAVITA CHOICE MOBILE MYCARE ZEEBOK NEXT CARVA