

ONE SMART DECISION.
A LIFETIME OF PLEASANT LIVING.

RESIDENTIAL PLOTS
AT KOTHREPALLY, VIKARABAD



LP No. 0025/LO/3042/2023



RERA No. P02100005950

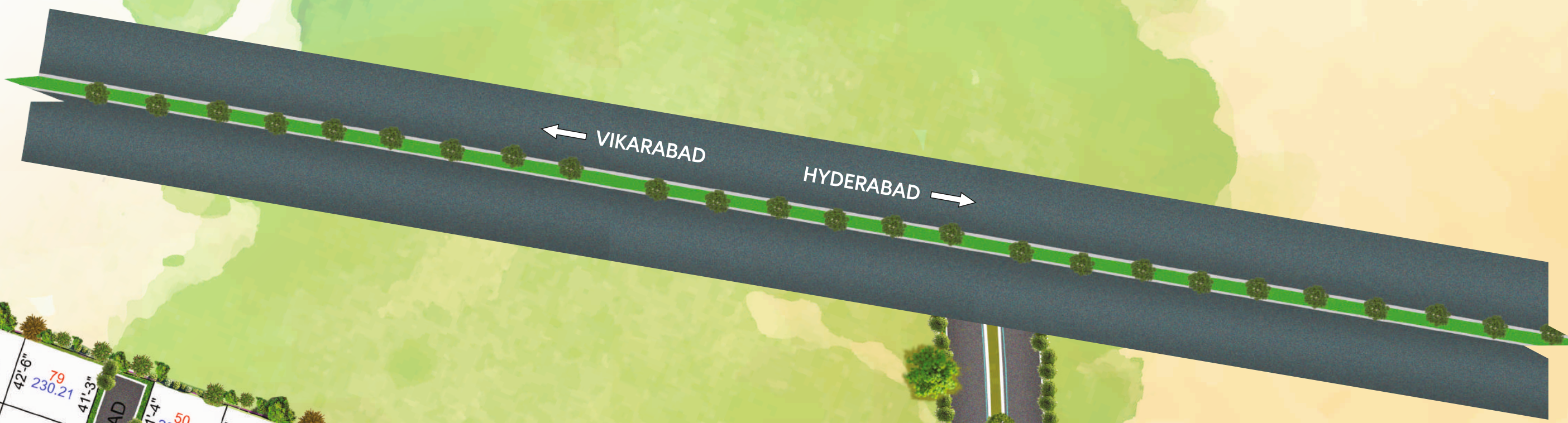
KEEP CLOSE
TO NATURE'S HEART
AND BREAK CLEAR AWAY,
ONCE IN AWHILE,
AND CLIMB A MOUNTAIN
OR SPEND A WEEK IN THE WOODS.
WASH YOUR SPIRIT CLEAN



Introducing Silpa Sindhu Serenity – a space designed for the nature-worshipper and the connoisseur of fine living. Created to inspire you with the abundance of nature you can escape into, and the pleasures it offers - it's that perfect getaway you've always reminisced about with fresh air that is rejuvenating, spaces to connect with loved ones, activities to keep you healthy, contemporary homes that are a reflection of you, and lifestyles that one can only dream of.

- 143 Plots in 13 Acres
- Sizes ranging from 150 Sq.Yds. to 650 Sq.Yds.
- 40' & 30' Internal Roads

Master Layout



Pick up a blank canvas and paint your masterpiece in your own colours

Choose the plot you like and take the lead of your dream home. With a spacious plot from Silpa Sindhu Serenity, you will have all the freedom to build your home your way. What's more every plot here is amidst sprawling greenery and enjoys all the amenities and facilities of the project.

-  Grand Entrance Arch
-  All Round Compound Wall
-  Transformer & street lights
-  30' & 40' Internal Roads
-  Water Connection for Each Plot
-  Underground Electricity
-  Tree-lined Footpaths
-  Rainwater Harvesting
-  CC Cameras for 24x7 security



Today's Minimum Investment is Tomorrow's Maximum Asset.

Land ownership is perhaps the most ancient expression of wealth. Throughout the history, it has inspired people to invest in land for a better future and a lavish life. Today, the relationship between land, property and wealth is more complex and more commercial than ever before. The potential of investing in land is vast & endless. Think about it - land is a long-term, tangible asset that doesn't wear out, doesn't depreciate and nothing can get broken, stolen or destroyed. Put all of these benefits together. What do you get? Peace of mind with "Hands-Off" Investment.

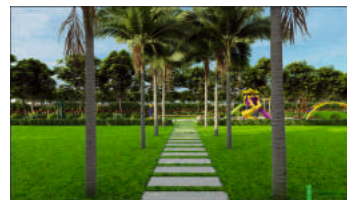
The benefit of investing in land can be concluded as No Risk & Sure Shot Returns. It's time to make your own Realty!



3000 SFT
CLUBHOUSE

SHADES OF RECREATION TO PAMPER ALL YOUR MOODS

At Silpa Sindhu Serenity, life is not just about enjoying every bit of it. Our luxurious club has every facility to enliven your mood, refresh your body and rejuvenate your soul.



INDOOR & OUTDOOR AMENITIES



Gymnasium



Library



Snookers



Table Tennis



Board Games



Multipurpose Hall



Guest Room



Landscape Garden



Mediation Zone



Walking/
Jogging Track



Children's
Play Area



Tree Side
Seating Area



Gazebo



Cricket Net



Multipurpose
Court



Outdoor
Party Area

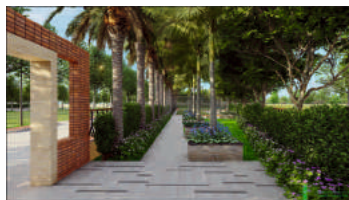
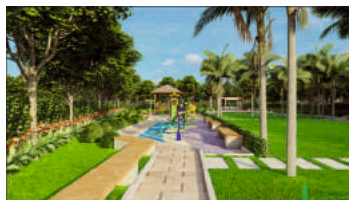
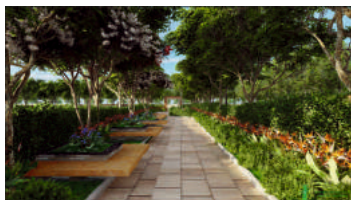


Stage /
Amphitheater



Outdoor Gym

1.5 ACRES
RECREATIONAL SPACE



LOCATION MAP (NOT TO SCALE)



At the neighbourhood of Silpa Serenity, a peculiar unification of nature's solace along with the city's greatest advances is found in its truest habitat. The tranquil breeze of the lush surroundings puts the mind at ease, while conveniences of great connectivity make life peaceful. Here, you will never be too far from where your heart desires to be; starting from recreational hubs to commercial epicentres.



13 KM
ANANTHAGIRI
HILLS



45 KM
MRUGAVANI
DEER PARK



42 KM
OSMAN SAGAR

DISTANCE FROM MAJOR LOCATIONS

Sri Sai Dental College, Vikarabad - 1 km
RTO Office & S.P. Office, Vikarabad - 4 km
Vikarabad - 5 km
New District Collectorate Office, Vikarabad - 6 km
Vikarabad Railway Station - 6 km
Ananthagiri Hills - 12 km

Shankarpally - 22 km
Moinabad - 30 km
Chilkur Balaji Temple - 35 km
Gachibowli - 42 km
TSPA Junction (ORR Exit 18) - 50 km
International Airport - 55 km






Unleash
Your Imagination with



silpa
INFRA TECH



 **Silpa Infratech**, 3rd & 4th Floor, Apurupa One,
108, Road Number 10, Jawahar Colony, Jubilee Hills, Hyderabad, Telangana 500033

 www.silpa.co.in  info@silpa.co.in



LP No. 0025/LO/3042/2023



RERA No. P02100005950

The contents including design, layouts, amenities, facilities, images displayed/provided, are solely for information purpose and is not intended to constitute solicitation. It is an artistic impression/schematic representation of the project shown and is indicative of project that can be built. This material does not constitute a contract of any type between the developer/promoter/owner and the recipient. Nothing should be construed to be the final image/view of the final project. Since the project is under evolution, there is possibility that there may be certain changes in the project as represented in promotional material. Every interested buyer is required to verify all the details independently with the sales team, prior to concluding any decision of buying any unit. The firm is not responsible for the consequences of any action taken by the viewer relying on such information/material. Terms and conditions apply.