

Developed By



Kavita builder & developers

SHIV SHRUSHTI Complex



Bldg. No.1



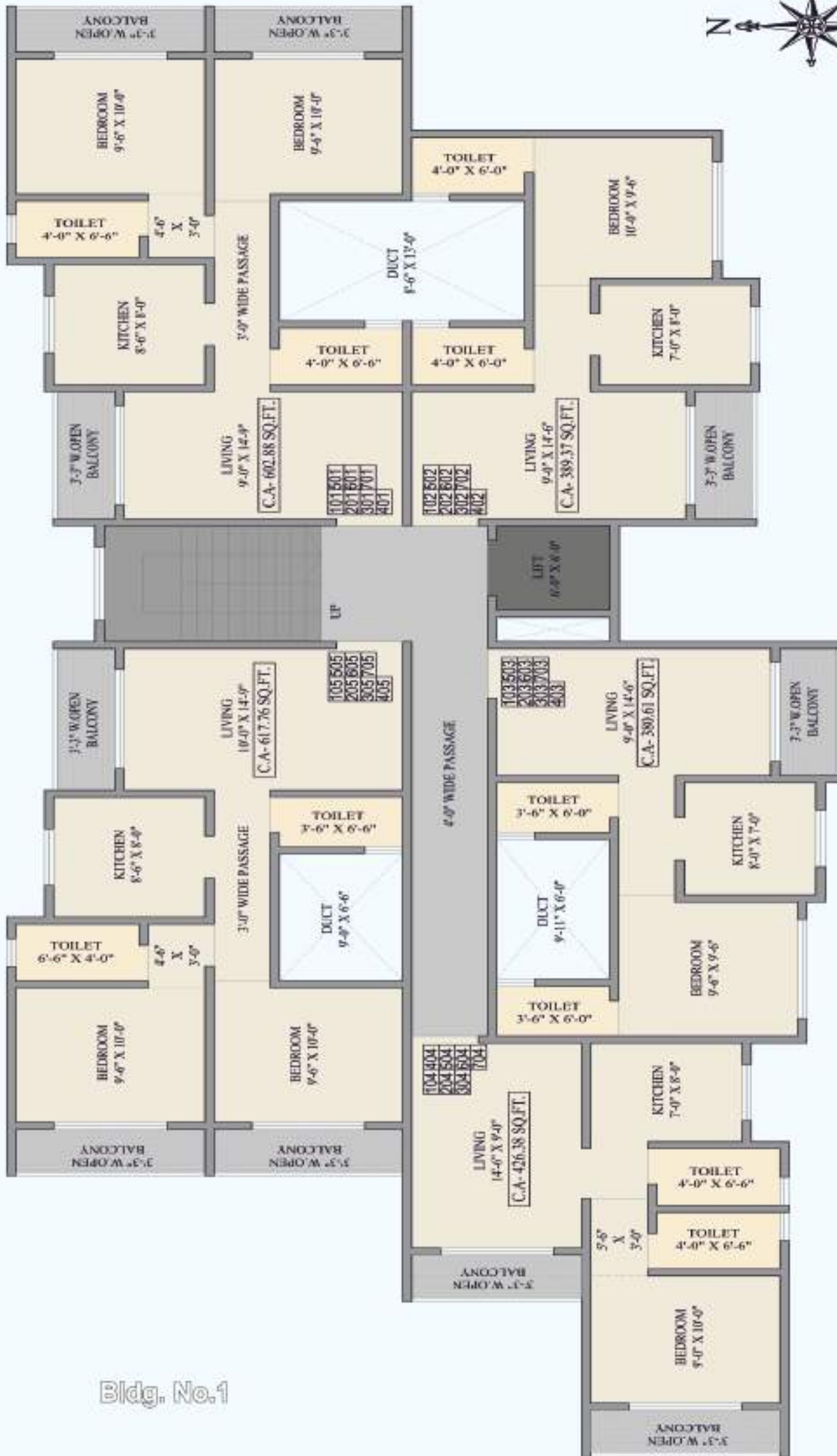
Bldg. No.1





TYPE -A
GROUND FLOOR PLAN





Bldg. No.1

TYPE -A
1ST TO 7TH FLOOR PLAN

Upcoming Project Building No. 2



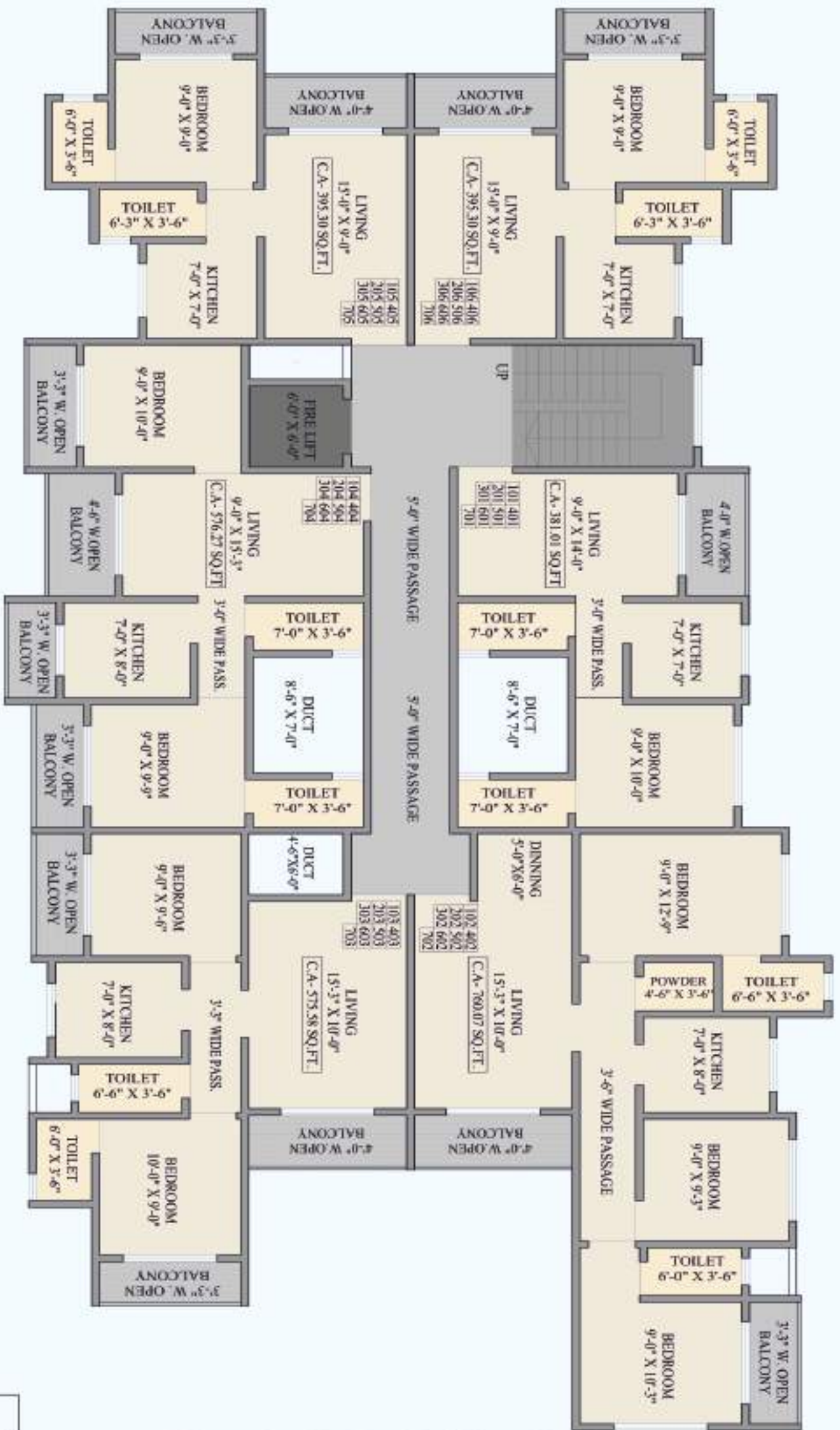
Upcoming Project Building No. 2





BUILDING NO.- 02 (TYPE -B)
GROUND FLOOR PLAN





**BUILDING NO.-02 (TYPE-B)
1ST TO 7TH FLOOR PLAN**



All You Need

For Your Convenience

Internal Amenities

LIVING & BEDROOM

- Vitrified Flooring
- Flower Bed with Designer Railing

ELECTRICAL

- Concealed Copper Wiring with Modular Switches
- Sufficient Electric Points
- Safety Features like MCB

KITCHEN

- Fine Finish Granite Top Platform with SS Sink.
- Vitrified Flooring
- Designer Tiles on wall upto Beam Level above platform
- Modular Kitchen Trolley

DOORS

- Wooden Doors with Quality Fittings
- Wooden Door Frame
- Bakelite Doors for Bathroom/TOI

1BHK with Master Bedrooms WINDOWS

- Good Quality Anodised sliding windows
- Granite Sills

PAINTING

- Superior Quality Paint for External Walls
- Superior Quality Paint on internal walls
- China chip on Terrace

WASHROOM

- Designer Bathrooms tiles
- Anti Skid Tile Flooring
- Concealed Plumbing
- Premium C.P. Fittings
- Branded Sanitary Ware
- Overhead Water Tank with Loft



1BHK



2BHK

Paramount Enclave On Ready Position OC Received



Developed By



Kavita builder & developers


ARCHITECT
NISHANT P. PATIL

RCC CONSULT
YOGESH VAJA

LEGAL ADVISOR
SUNILD PAL

Reg. Office No. 17, First Floor, Sunshine Height, Near Railway Station, Nallasoara (E)

Site: Survery No.15, Near Cello Decent Homes, Station Road, Village Vevoor, Palghar East - 401404

 kavitarealty56789@gmail.com



The project has been registered with
MaharERA registration number -

is Available

the website - www.maharera.mahaonline.gov.in under registered projects.



9158256144 / 8788280377

Note : This Brochure is purely conceptual and not a legal offering. The promoters/ architects reserve the right to add/delete/alter any detail/specification/ elevation mentioned herein. The Brochure is indicative of how the furniture can be arranged in the flat. No furniture of any nature is to be supplied to the purchaser by the developer.