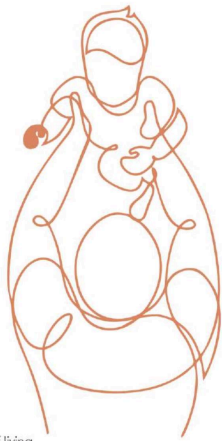




# WIND CHIMES

IT'S TIME TO COME HOME.



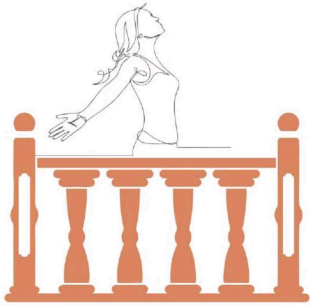
The future of living  
HAS NO BARRIERS.

With an experience of more than 12 years in the Real Estate Sector, our primary focus has ever since been on comfort living with modern amenities and facilities. We create a living environment coupled with utmost satisfaction.

With Wind Chimes, we are set to bring in 2 BHK, 2.5 BHK, 3BHK and 4BHK homes which are designed to provide a very comfortable, convenient and elegant lifestyle to our customers.



Happiness is  
wide open spaces to  
chase your dreams



Feel the wind of change, every day  
thoughtful design with a deeper perspective



 WIND  
CHIMES  
IT'S TIME TO COME HOME.



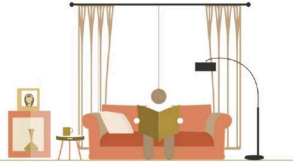
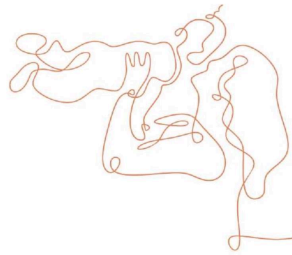
GROUND FLOOR PLAN



FIRST FLOOR PLAN



TYPICAL FLOOR PLAN



Large and lavish space specially crafted for ones who have always lived life king size. Custom designed apartment to match your style and stature. Uncompromised living standards, perfect blend of classy material is what you can expect in WIND CHIMES.

 WIND  
CHIMES  
IT'S TIME TO COME HOME.



## The Free Spirit

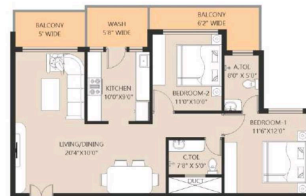
She's an explorer and a poet, capturing the world through her lens and with her pen. She works on her own time, from the comfort of home. An avid coffee lover, friends love coming over to experiment with her new blends. She espouses an organic lifestyle and practices yoga & meditation. Her home is filled with knick-knacks from her trips around the world.





| 3 BHK Units Facing Options (North/South) | B/Up    | Total |
|--|---------|-------|
| A1/B1/C1/D1/E1                           | 1152.74 | 1625  |
| A2/B2/C2/D2/E2                           | 1148.16 | 1625  |
| A10/B10/C10/D10/E10                      | 1257.52 | 1725  |
| A11/B11/C11/D11/E11                      | 1159.8  | 1625  |

| 2 BHK Units Facing Options (North/South) | B/Up   | Total |
|--|--------|-------|
| A3/B3/C3/D3/E3                           | 867.72 | 1225  |







| 2.5 BHK (UNITS) | B/Up    | Total | Facing |
|-----------------|---------|-------|--------|
| A4/B4/C4/D4/E4  | 1005.28 | 1425  | West   |
| A5/B5/C5/D5/E5  | 1005.28 | 1425  | East   |
| A6/B6/C6/D6/E6  | 1005.28 | 1425  | East   |
| A9/B9/C9/D9/E9  | 1005.28 | 1425  | West   |



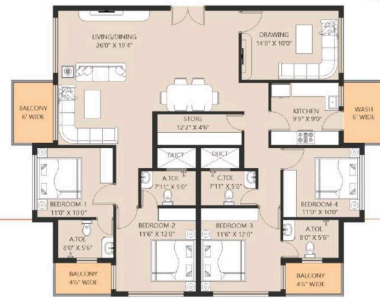
| 2 BHK (UNITS)  | B/Up   | Total | Facing |
|----------------|--------|-------|--------|
| A7/B7/C7/D7/E7 | 832.97 | 1175  | South  |
| A8/B8/C8/D8/E8 | 832.97 | 1175  | South  |



**3.5 BHK**  
(CUSTOMIZED UNITS)



**4 BHK**  
(CUSTOMIZED UNITS)



 **WIND  
CHIMES**  
IT'S TIME TO COME HOME.

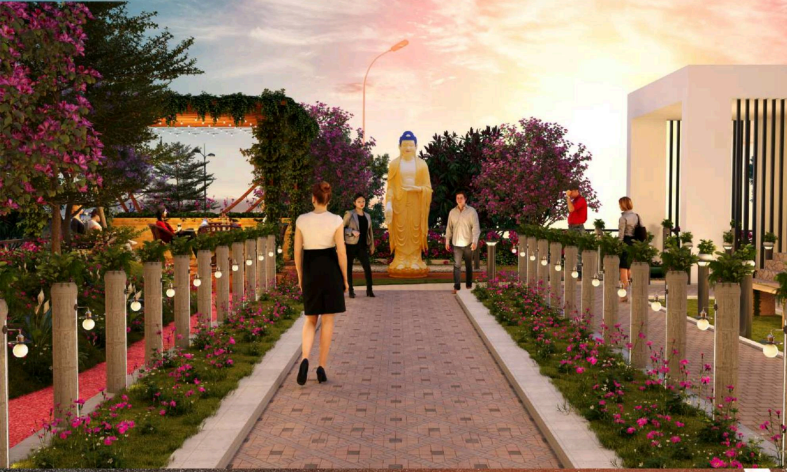


Discover How Beautifully Unbridled  
Spirit of The Heart Found Its Way  
Into The Modern Living.





The Sheer Bliss.  
Of The Great **Outdoors**



Temple



Gazebo



Yoga room



Gym



Indoor Game Zone



Toddler Play Area



Podium Garden



Senior Citizen Sit Out Area



Small Multi-purpose Hall










Wind Chimes is built in collaboration with nature. That means, children can finally move away from the Internet, the television & smart phones to a world full of activity and fun. There are designer landscapes, shady trees, cobbled pathways, sports zones & more. While toddlers are safe in the tot lot, the younger bundles of energy can have a ball at badminton, tennis or cricket.

## Building Specifications:-

|                    |   |
|--------------------|---|
| Structure          | - RCC Framed Structure  |
| Brick Work         | - 8/4 inches thick brick Mansory  |
| Plaster            | - 12mm thick cement plaster in all walls  |
| Water supply       | - 24 hours water supply through RCC overhead and underground tanks  |
| Staircase and lift | - 2 lifts of minimum 6 passenger each and 2 of minimum 12-14 passengers and granite flooring with SS railings in stairs |
| Internal Roads     | - Cement paver interlocking tiles with acid finish/cement concrete road   |



| Areas                            | Walls                  | Floor  | Ceiling  |
|----------------------------------|---|---|---|
| Living/Dining/Family /Study room | Birla White/JK Cement putty with professional interior emulsion   | Glazed vitrified tiles sized 4'X6'  | Birla White/JK Cement putty with tractor emulsion   |
| Master Bed room                  | Birla White/JK Cement putty with professional interior emulsion   | Glazed vitrified tiled sized 32"X64"  | Birla White/JK Cement putty with tractor emulsion   |
| Other Bed rooms                  | Birla White/JK Cement putty with professional interior emulsion   | Glazed vitrified tiled sized 32"X64"  | Birla White/JK Cement putty with tractor emulsion   |
| Kitchen                          | Dato tiles upto 2' above platform rest, Birla White/JK Cement putty with professional interior emulsion | Glazed vitrified tiled sized 32"X64"  | Birla White/JK Cement putty with tractor emulsion   |
| Balcony                          |   | Anti skid wooden pattern plank tiles  | Birla White/JK Cement putty with tractor emulsion   |
| Toilets                          | Premium glazed vitrified tiles sized 2'X4'  | Premium anti skid 2'X2' floor tiles   | Birla White/JK Cement putty with tractor emulsion   |

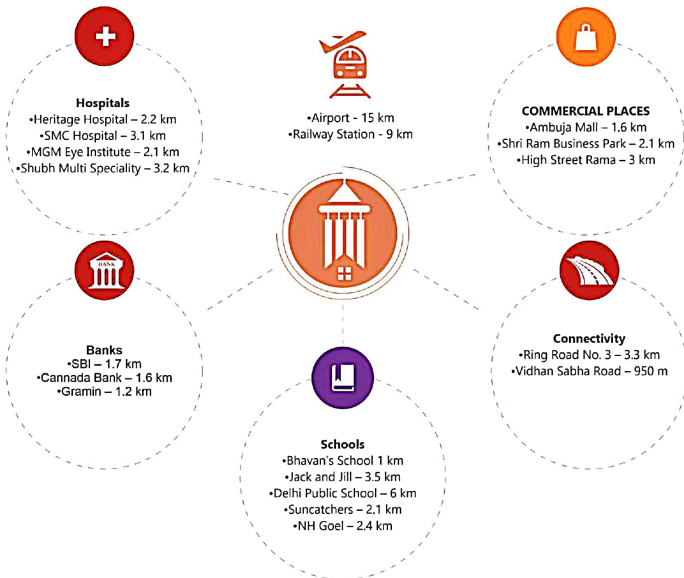
| Doors  | Window/Glazing  | Sanitary/Water Supply  | Electrical                               |
|---|--|---|---|
| All doors 7'6" height flush shutter with brown enamel paint and Salwood frames          | UPVC/Powder coated /Aluminum window frame with 3 track   | Premium brand washbasin with tap and premium brand bath fittings and WC.                                  | Premium modular switches and sockets with concealed ISI mark wires AC,TV inventor paint                                     |
| All doors 7'6" height flush shutter with brown enamel paint and Salwood frames          | UPVC/Powder coated /Aluminum window frame with 3 track   |   | Premium modular switches and sockets with concealed ISI mark wires AC,TV inventor paint                                     |
| All doors 7'6" height flush shutter with brown enamel paint and Salwood frames          | UPVC/Powder coated /Aluminum window frame with 3 track   |   | Premium modular switches and sockets with concealed ISI mark wires AC,TV inventor paint                                     |
| All doors 7'6" height flush shutter with brown enamel paint and Salwood frames          | UPVC/Powder coated /Aluminum window frame with 3 track   | Standard CP fittings for fresh and hot water supply for utensil washing                                   | Premium modular switches and sockets with concealed ISI mark, wires, electrical points for washing machine/chimney/purifier |
| All doors 7'6" height flush shutter with brown enamel paint and Salwood frames          | UPVC/Powder coated /Aluminum window frame with 3 track   | One tap point for balcony washing   | 16A sockets with premium modular switches and sockets with cancelled ISI mark wires   |
| All doors 8' height flush shutter with brown enamel paint and Salwood frames            | Upvc/powder coated /aluminum ventilator frames with frosted glass                                  | High end luxury products and fittings and granite washbasin top   | Premium modular switches and sockets with concealed ISI mark,   |



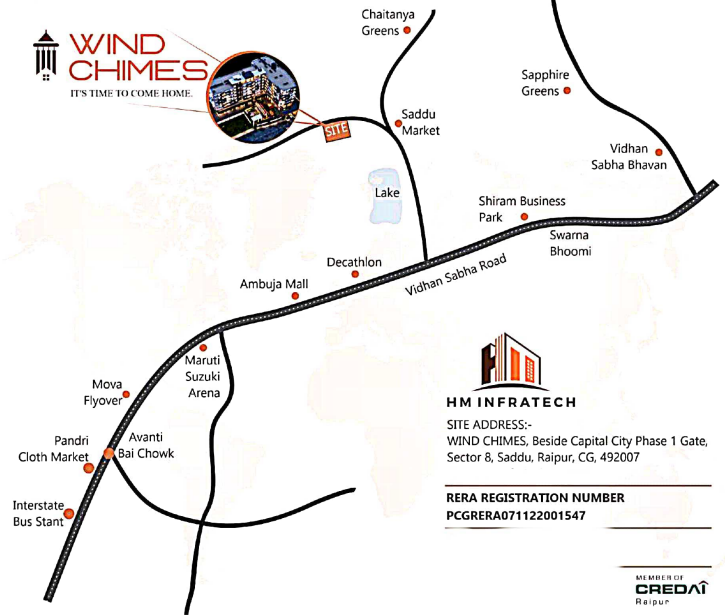
**Notes:-** Stamp Duty & Registration fees | Electrical Meter charges, Transformer deposit, Water Meter & Connection Charges, Deposits & Expenses at actual to be paid extra in advance. G.S.T. or any such additional taxes will be charged extra. Changes in the specification & plan will cost extra. Possession of the flat will be given by the builder after clearance of all dues. Any Extra Work shall be charged separately before execution.

### Raipur fastest growing neighbourhood

The best schools, colleges, shopping centres and medical facilities are all less than 10 minutes away from Wind Chimes. And the future is even brighter - there are huge residential developments, hospitals, shopping and sporting facilities coming up in very close proximity to Wind Chimes.



### Location Map (not to scale)



This brochure is purely a conceptual presentation and not a legal offering. The promoters reserve the right to alter or make any changes in the elevation, plans and specifications as deemed fit. Elevation mentioned herein. All units are unfurnished. Furniture wherever shown is for illustrative purpose only. No furniture is to be supplied to the purchaser by the developer unless otherwise indicated or used for illustrative purpose only.



**HM INFRATECH**