



# The SKYLARK

— Destination of the Future —

..... PROJECT BY.....



Site Address: The Skylark, Plot No. 94/1, Bangalore-Mumbai Highway,  
Near Sentosa Resort & Sameer Lawns, Kiwale (Ravet), Pune West – 412 101

**Contact No: + 91 888 888 1837 / +91 888 888 5349**

[www.skylarkkiwaleravet.com](http://www.skylarkkiwaleravet.com) |  Available on Maharera Website:  
<https://maharera.mahaonline.gov.in>  
**P52100015274**

This Brochure does not constitute an offer / acceptance / contract / agreement or disclosure under any statute of any nature whatsoever. This Brochure shall not be considered as our offer/promise/commitment of any nature in respect of the Project. This Brochure is merely conceptual and is not a legal document and the Developer reserve the right to change, amend and modify the contents and shall not be liable to any intending purchaser or any one for the changes/ alterations/ improvements so made. The contents, pictures, images, renderings, maps and pictorial representations contained are used to indicate a conceptual lifestyle and some are purely indicative in nature and may be the creative imagination and the actual product may vary / differ from what is indicated herein. The common areas and amenities that have been shown herein are for the entire Project and not specific for any particular building or phase and the common areas and amenities may not be available on completion of the first phase of the Project and may be developed in a phase-wise manner, over a period of time and will be completed and may be handed over after all phases in the Project are completed. The specifications and amenities mentioned in this brochure and promotional documents are only representational and informative. The Developer reserves rights to make additions, deletions, alterations or amendments as and when it deem fit and proper, without any prior notice.

[www.skylarkkiwaleravet.com](http://www.skylarkkiwaleravet.com)



Quality. Trust. Transparency. Timely Delivery.



Every dream matters. We, at Mohisha Realtors, strive to offer the best to our customers. Since inception, we've left no stone unturned in achieving perfection. Every project crafted by us reflects excellence. This has been made possible by a versatile team of go-getters. By being transparent we've gained the trust of our customers and ensured timely delivery of every project.



# The SKYLARK

— Destination of the Future —

3, 2 & 1 BHK SUPER HOMES

@ KIWALE (RAVET)

Living is no longer restricted to a Bedroom, Hall and Kitchen. Presenting Super homes at **The Skylark**. The project offer a delightful mix of well planned apartments along with exciting amenities. The homes are adorned with branded fittings. Besides, you can experience comfort and convenience at all times. What's more, the connectivity to prime locations will make your life blissful.

**So book a Super Home at The Skylark, Destination of The Future.**



\*An Architectural 3D Rendered Images for Presentation Purpose only.

# A Thoughtfully Planned Project for Super Living



MHADA

**SUPER  
HOMES**  
DESTINATION OF  
THE FUTURE

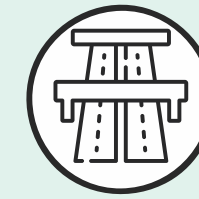
\*An Architectural 3D Rendered Images for Presentation Purpose only.

# Destination of the Future with Super Location

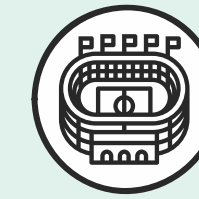
# Why we say Destination of The Future??



## Look at the Power of Connectivity:



Pune- Mumbai  
Expressway  
within 2 mins



MCA International  
Cricket Stadium  
within 5 mins



Pune's Mega IT  
Park- Hinjawadi  
within 10 mins



Shopping Malls  
& Multiplexes  
within 5 mins



Industrial Hubs Like  
Chinchwad, Talegaon,  
Urse MIDC within 30 mins



Adventures & Leisure  
Destinations like Lonavala  
& Khandala within 40 mins



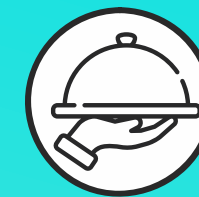
Wakad, Baner &  
Aundh are in close  
Proximity



Symbiosis Institute, JSPM,  
City Pride School, SB Patil School,  
CMS, Adhira School are in close proximity



Proposed Phoenix Mall  
at Wakad within 10 mins



Famous Sentosa Resort  
is at Walking Distance

The  
**SKYLARK**  
— Destination of the Future —

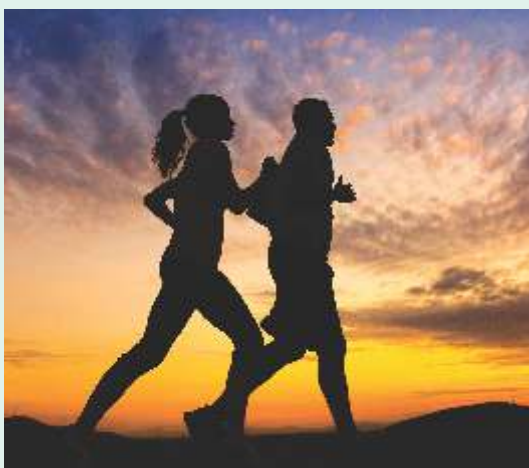


This makes The Skylark, so  
lucrative location waiting to be  
explore for your dream home !

# Super Amenities



- ▶ Air Conditioned Gymnasium
- ▶ Amphitheater
- ▶ Cricket Pitch
- ▶ Club House
- ▶ Open Ground For Badminton
- ▶ Open Ground For Basket Ball
- ▶ Jogging Track
- ▶ Landscaped Garden
- ▶ Children's Play Area
- ▶ Sandpit For Kids
- ▶ Pool Table
- ▶ Table Tennis
- ▶ 2 Level Car Parking
- ▶ Eco Friendly Environment
- ▶ 2 Way Road Side Connectivity
- ▶ Generator Back Up In Common Area
- ▶ Music & Dance Studio
- ▶ Automatic Lift With Backup
- ▶ Security / Fire Alarm
- ▶ CCTV Surveillance In Common Area
- ▶ Intercom Facility
- ▶ Grand Entrance Lobby



# Highlights of The Skylark



Two Level Parking



Guest Meeting Room



Kitty Party



Indoor Games



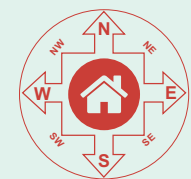
Well Ventilated Apartments



Dance Studio



L Size Homes



Vastu Shastra Complaint Homes

3, 2 & 1 BHK SUPER HOMES  
@ KIWALE (RAVET)



# Super Specifications



\*Images shown for Reference Purpose Only.

## Structure

- Earthquake Resistant RCC Frame Structure

## Walls

- External Walls Double coat sand plaster
- Internal Wall with gypsum finishing

## Flooring

- 2x2 Double Charged Vitrified Tiles for all Rooms
- Designer Tiles for Toilets

## Windows

- 3 Track Sliding Windows With Mosquito Net and Heavy Granite Sealing Frame for Windows
- Aluminum Section Windows with Powder Coating
- M.S. Grills for Safety & Security
- Large Windows for better air circulation, ventilation & view

## Doors

- Plywood Flush Door with Laminates Finish
- Granite Sealing Frame for Bathroom Doors

## Kitchen

- Kitchen Platform with Black Granite
- Stainless Steel Sink
- Lintel Level Dado Tiles

## Sanitary Fittings

- Premium Range Sanitary Fittings

## CP Fittings

- Premium Range CP Fittings. ( Jaguar or Equivalent Brand)

## Electrical

- Concealed Copper Wiring
- AC Point in Master Bedroom



Don't Compromise  
On Fitness



[www.skylarkkiwaleravet.com](http://www.skylarkkiwaleravet.com)

## Luxurious Club House for Superior Life

The Club House is the main attraction at The Skylark. Built with a lot of thought, the club house creates a lot of possibilities. There's a special zone where ladies can host their kitty parties. If you just wish to have a good time, then choose any of the games. The best part is: There is something for every age group. Boredom will be a thing of the past, be it anyone. You can explore a lot of other things at the clubhouse.



\*An Architectural 3D Rendered Images for Presentation Purpose only.



← Identical Perspective View

## 2 BHK

- A** Entry
- B** Living Room
- C** Terrace
- D** Dining
- E** Kitchen
- F** Dry Terrace
- G** Common Toilet
- H** Master Bedroom
- I** Attached Toilet to M. Bedroom
- J** Attached Terrace to M. Bedroom
- K** Common Bedroom



← Identical Perspective View

## 3 BHK

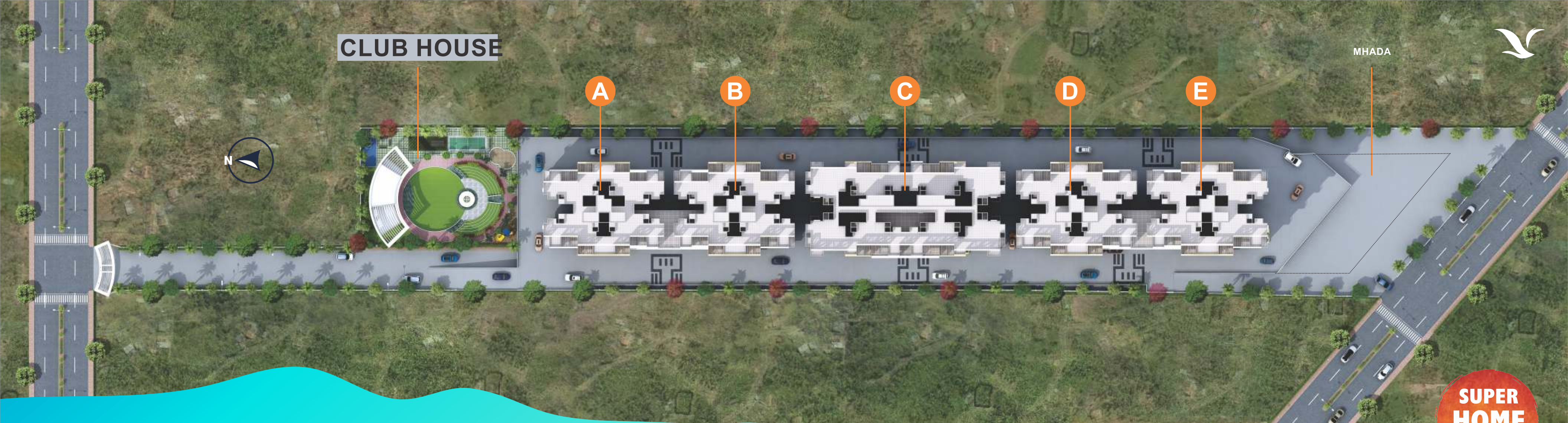
- A** Entry
- B** Living Room
- C** Terrace
- D** Dining
- E** Kitchen
- F** Dry Terrace
- G** Common Toilet
- H** Common Bedroom One
- I** Attached Toilet to M. Bedroom
- J** Master Bedroom
- K** Attached Terrace M. Bedroom
- L** Common Bedroom Two



\* An Architectural 3D Rendered Images for Presentation Purpose only. The Furniture, Tiles, Color, Accessories & other Appliances are shown for Presentation Purpose only & are not included in agreement.

\* An Architectural 3D Rendered Images for Presentation Purpose only. The Furniture, Tiles, Color, Accessories & other Appliances are shown for Presentation Purpose only & are not included in agreement.





CLUB HOUSE

A

B

C

D

E

MHADA

**SUPER HOME MAKERS**

# The SKYLARK

— Destination of the Future —

3, 2 & 1 BHK Super Homes  
at Super Location, **Kiwale**

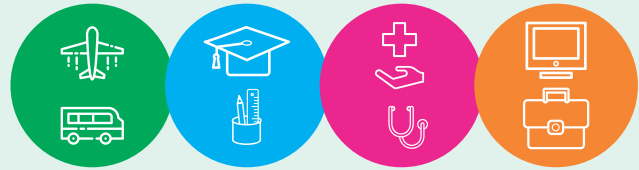


## Multiply your Possibilities with Power of Connectivity

There is no greater joy than a home which is close to everything you desire. It is the strategic location that makes it so exciting. Located in Kiwale (Ravet), the project is close to Hijawadi IT Hub. Best of Schools, healthcare centres are in close proximity. Moreover, the Chakan MIDC and the Industrial Hub of Pimpri Chinchwad are conveniently located. Besides, you can easily get the daily conveniences from the nearby stores. In other words, it is the destination of the future.

\*An Architectural 3D Rendered Images for Presentation Purpose only.

# KEY PLACES



## Schools /

### Educational Institutes

Symbiosis Institute	5 Mins
JSPM	8 Mins
PCP College	8 Mins
SB Patil School / College	8 Mins
D Y Patil School	8 Mins
Adhira Intl. School	8 Mins
Indira College	10 Mins
City Pride School	10 Mins
Akshara Intl School	12 Mins

### Shopping Malls / Multiplexes

Reliance Mall	8 Mins
D-Mart Ravet	8 Mins
Upcoming Phoenix Market City	10 Mins
Xion Mall, Hinjewadi	12 Mins
E-Square Multiplex	15 Mins

## IT Hub / MIDC's

Hinjewadi IT Park	12 Mins
Chinchwad MIDC	20 Mins
Talegaon MIDC	25 Mins
Urse MIDC	25 Mins

## Key Locations

Pune - Mumbai Expressway	2 Mins
MCA Cricket Stadium	5 Mins
Ravet (Mukai Chowk)	5 Mins
Wakad	10 Mins
Baner	20 Mins
Aundh	20 Mins
Pimple Saudagar	20 Mins
Chinchwad	20 Mins

## Restaurants/ Hotels

Sentosa Water Park & Resorts	2 Mins
Blue Water Restaurant	5 Mins
Raaga Imperio	10 Mins
Sayaji Hotel	10 Mins
Ginger Hotel	10 Mins

## Hospitals

Life Care Hospital	5 Mins
Ojas Hospital	8 Mins
Life Point Hospital	10 Mins
Surya Hospital	10 Mins
Aditya Birla Hospital	15 Mins

## Adventures / Leisure Places

Wet & Joy	20 Mins
Della Adventures	40 Mins
Lonavala & Khandala	40 Mins
Adlabs Imagica	50 Mins

# LOCATION MAP



\*Location map not to scale



# C R E D I T S

<b>ARCHITECT</b> Kimaya Associates Mr. Manik Buchade Mr. Anupkumar Satpute	<b>RCC DESIGN</b> Sarvasiddhant- Consultant	<b>LEGAL ADVISOR</b> Adv. P B Kamthe Mr. Namdev Surwase	<b>INTERIOR DESIGNER</b> Aayam Interiors Mr. Vinay Patel	<b>MEP &amp; EC CONSULTANT</b> Rheaa Civitech Pvt Ltd. Miss. Bhakti Mandke	<b>ELEVATION DESIGN</b> Atelier Graphics Miss. Anu Deshpande - Bhandekar	<b>BRAND CONSULTANT</b> D Plus Concept www.dpluseconcept.com
---	---	---	--	--	---	--