

# THE ARCHITECT'S VISION

AMBERWOOD



A woman with long brown hair, wearing a light-colored straw hat and a white top with a dark leaf pattern, is shown in profile, smelling a large yellow sunflower. She is holding the stem of the flower with both hands. The background is a bright, sunlit field with green foliage and a bokeh effect from the sun. A yellow circular graphic with a white border is overlaid on the left side of the image, containing a quote and the name of the author. The quote is in a serif font, and the author's name is in a sans-serif font. The quote is flanked by large, stylized quotation marks. The author's name is preceded by a dash. The overall mood is peaceful and joyful.

“

*It's not just a residence, but  
a glorious canvas where each day  
paints a story of utmost  
fulfillment and genuine joy.*

*- Ar. Shitesh Agrawal*

”

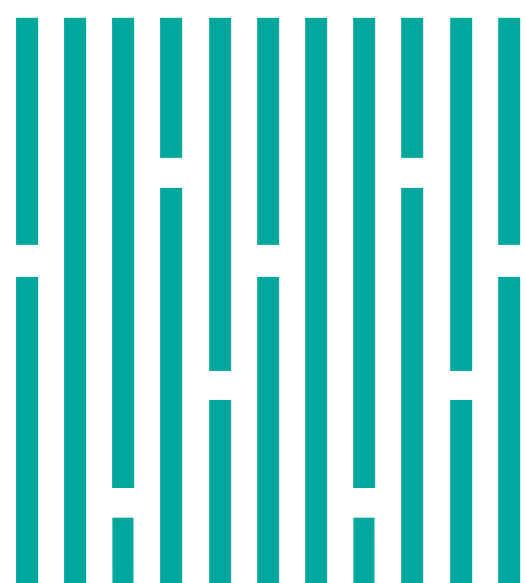
# THE ARCHITECTS

An architectural gamechanger with numerous prestigious awards under his belt, renowned architect Shitesh Agrawal is all about transforming our world into a truly better place.

His organisation, Sankalp Designers, has been pioneering bespoke architectural designs for grandiloquent homes, multifamily dwellings and townships, along with taking up urban planning, corporate as well as commercial architectural consultation projects since 2002.

Complementing them with equally path-breaking work are the architectural planning and landscape design mavericks from the famed Studio MAAP, who have over 10 years of experience in executing architectural, landscaping and urban design projects all across the city of Pune.

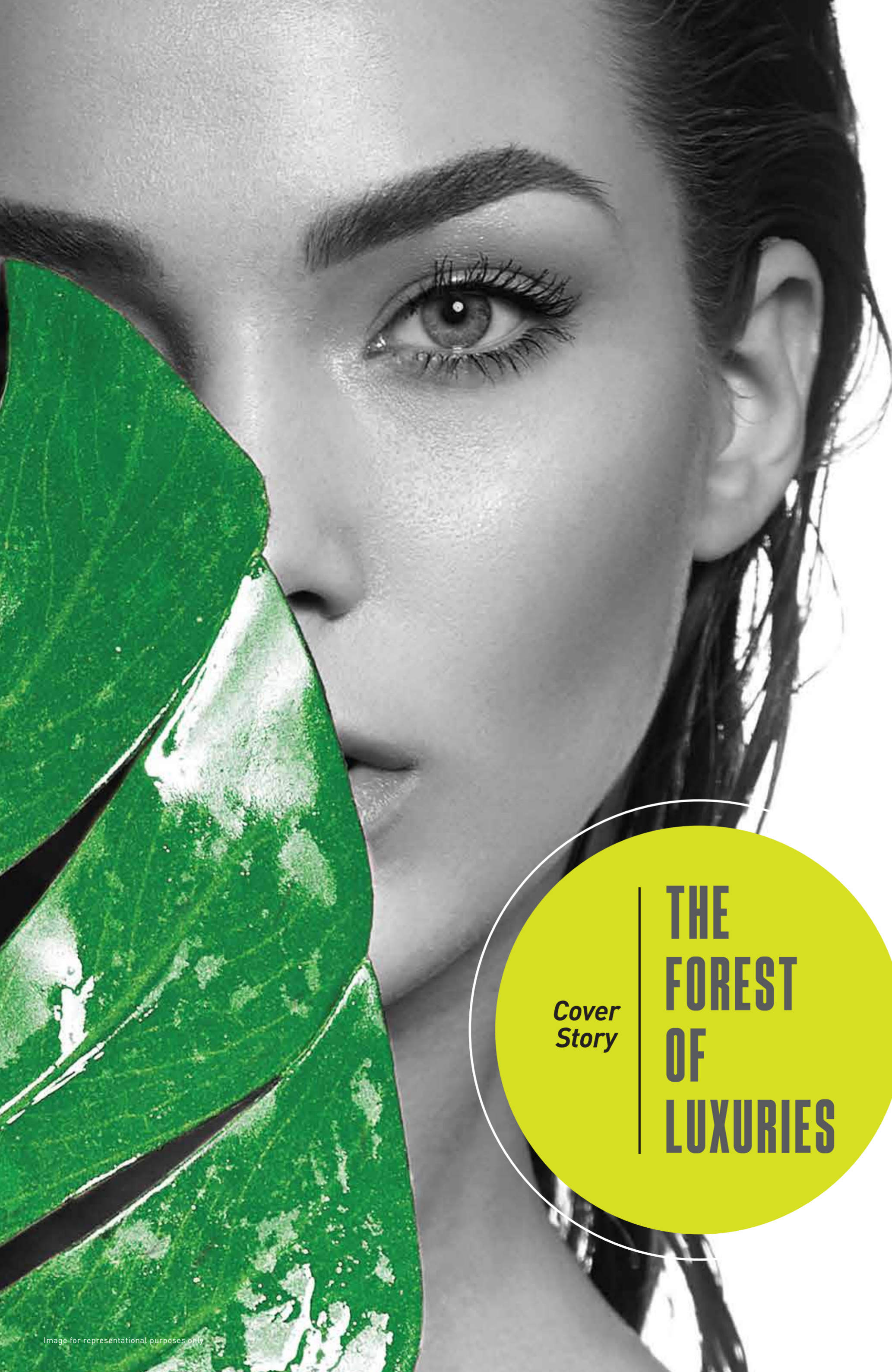
Their design expertise spans a wide spectrum of offerings ranging from large-scale city planning and transit-hub design to street design, place-making, and a whole lot more. This in turn has enabled them to mark their presence across diverse domains the likes of mixed-use developments, institutes and campuses, hospitality spaces, as well as residential and commercial spaces that take the very idea of 'public architecture' to levels unprecedented.





“  
THE  
BRIEF  
”

After choosing 'Amberwood' as the project name, we were tasked by the developers to do justice to the same. And so, we set out on a challenging course to create the heretofore unimagined; to build something that could seamlessly bridge the gaps between nature and man, and be future-ready and sustainable in ways unprecedented.



Cover  
Story

# THE FOREST OF LUXURIES



# THE AMBERWOOD SAGA

*In The Spotlight*  
The Architectural Masterstroke

*Under The Lens*  
An Evergreen Monument

*Freshly Featured*  
An Architectural Greenprint

*Future Frenzy*  
An Enthralling Creation  
Inspired By Nature

*The Kaleidoscope*  
The Interior Dreamscape

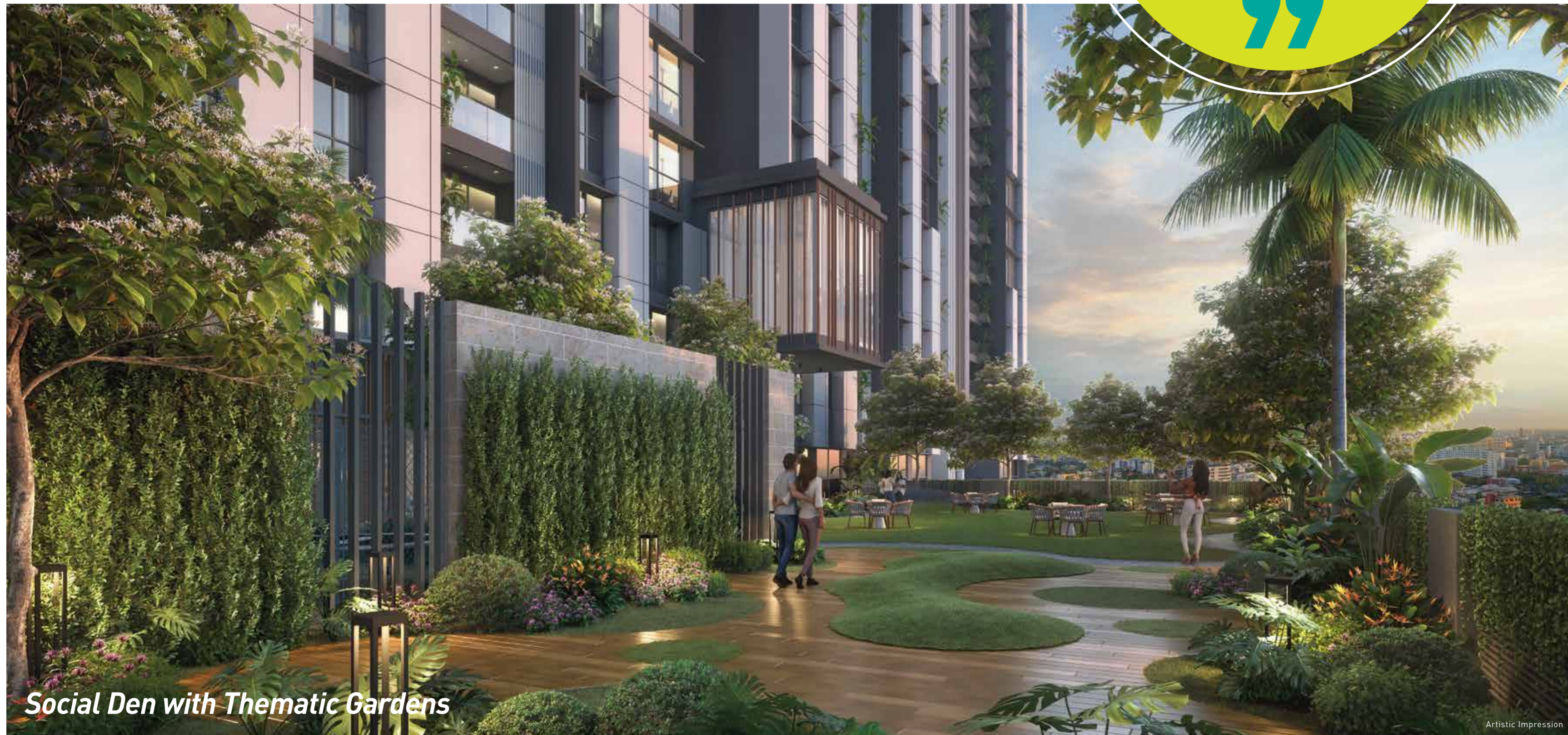


# THE ARCHITECTURAL MASTERSTROKE THAT CHANGED EVERYTHING

“

*The true genius  
of green design lies  
in its ability to create  
visual and ecological  
harmony, naturally.*

”



*Social Den with Thematic Gardens*

Artistic Impression

True architectural genius knows no bounds, and it's an undeniable fact for all who have taken even the tiniest of glimpses of Amberwood. For the brilliance with which enchanting greenery and exquisite amenities converge and blend-in with one another here is quite a sight to behold indeed; and displays a level of creativity heretofore unexplored.

For this is a rare realm in which the spellbinding façade is but the prelude to a treasure-trove of meticulously-curated amenities and thoughtfully-envisioned spaces. And it only gets better from there!

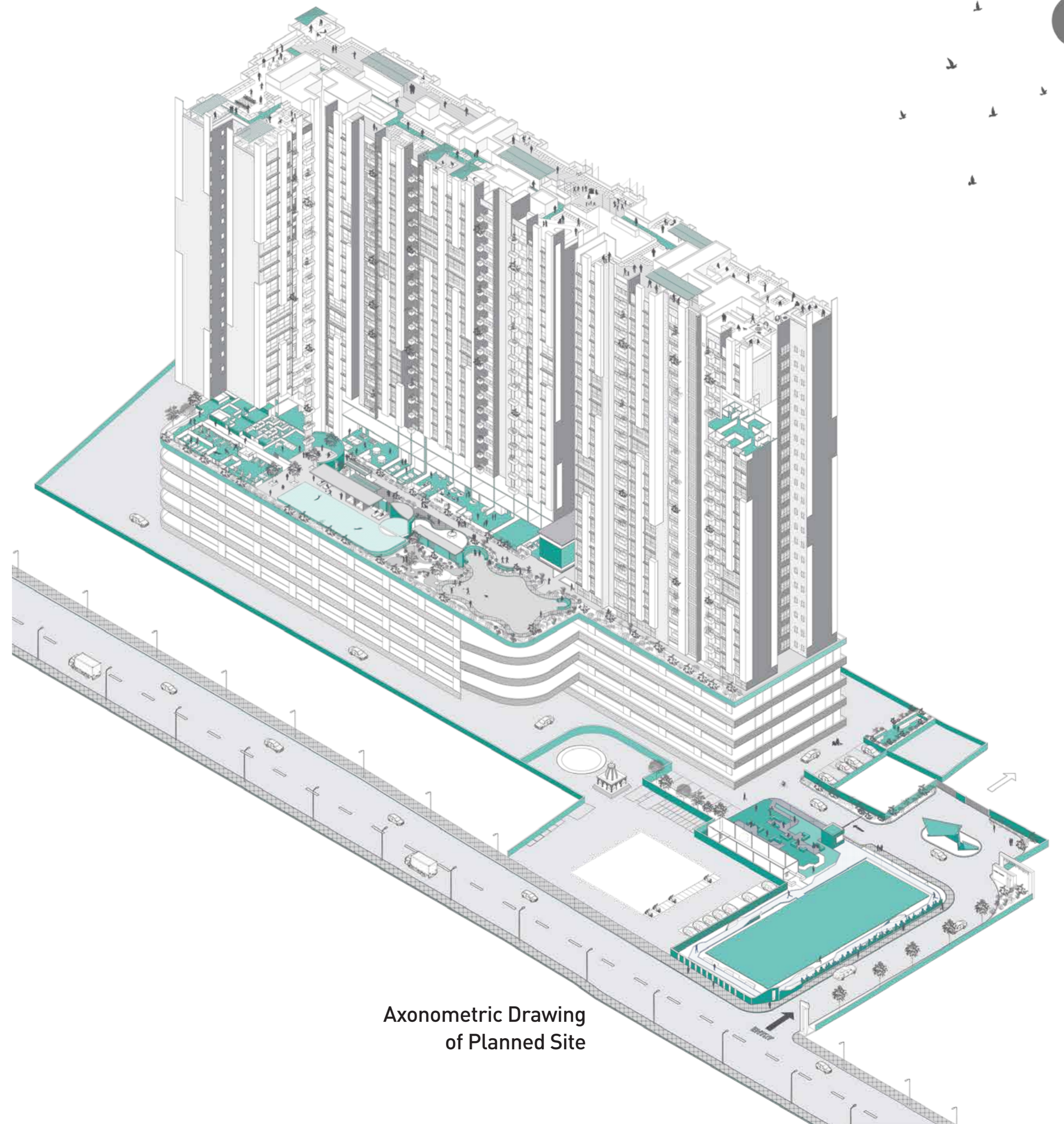




**AN  
EVERGREEN  
MONUMENT**

# AN ARCHITECTURAL GREENPRINT

Like an extravagant oasis amidst an urban jungle, Amberwood blends brilliant architecture with a timeless green design. Because to us, the future isn't about structural blueprints, but eco-sensitive architectural greenprints of the most ingenious variety!

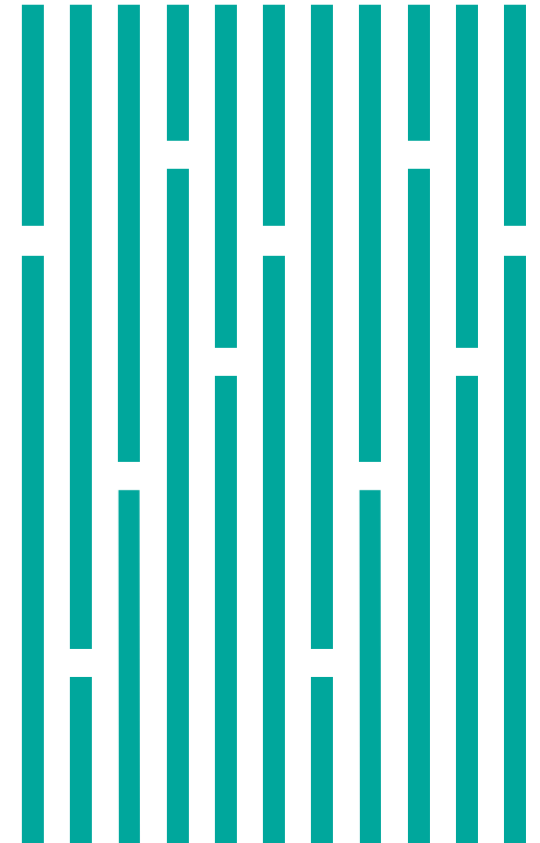
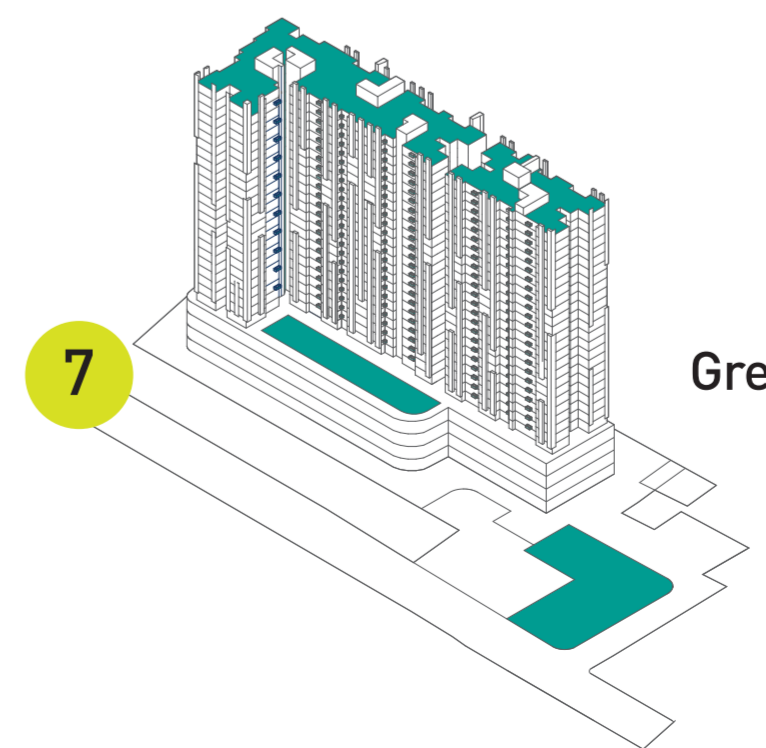
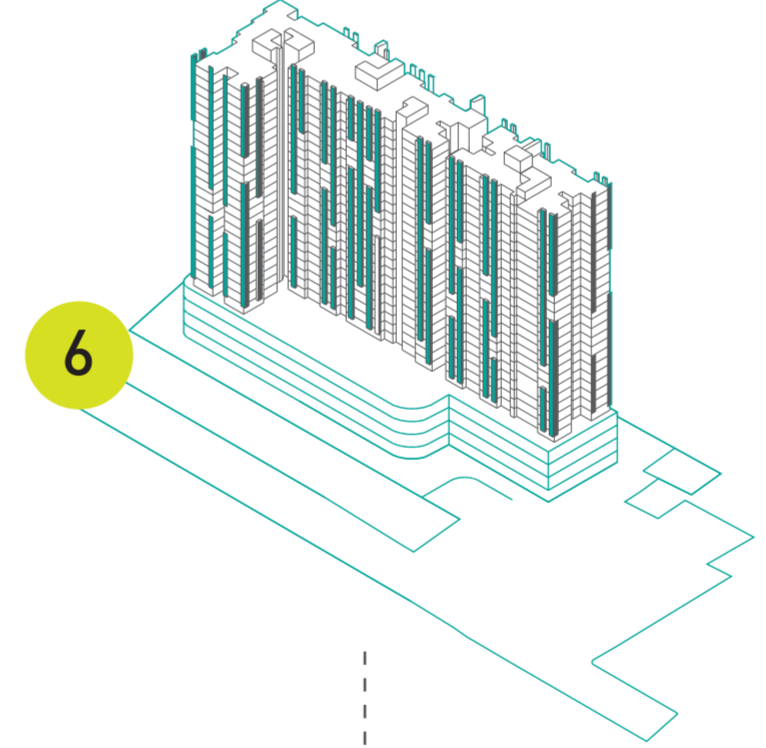
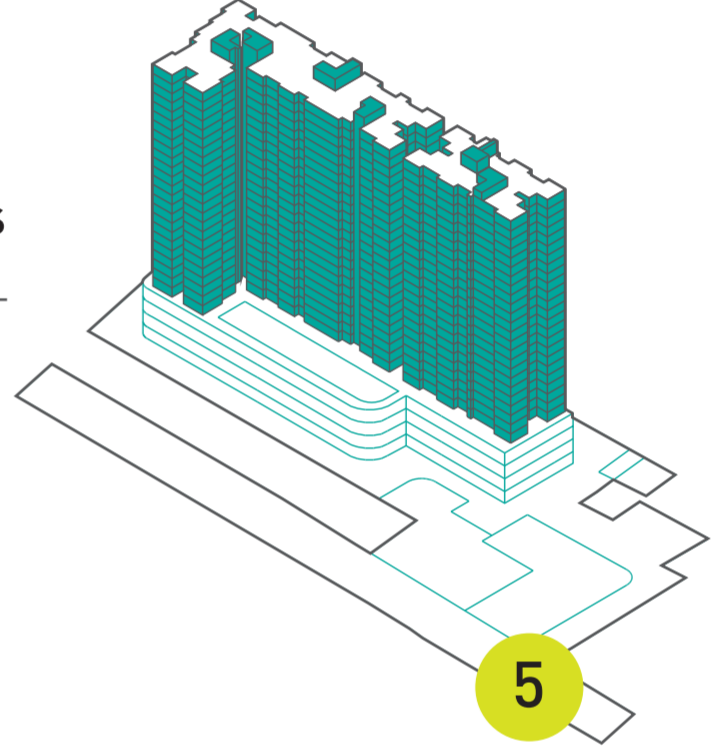
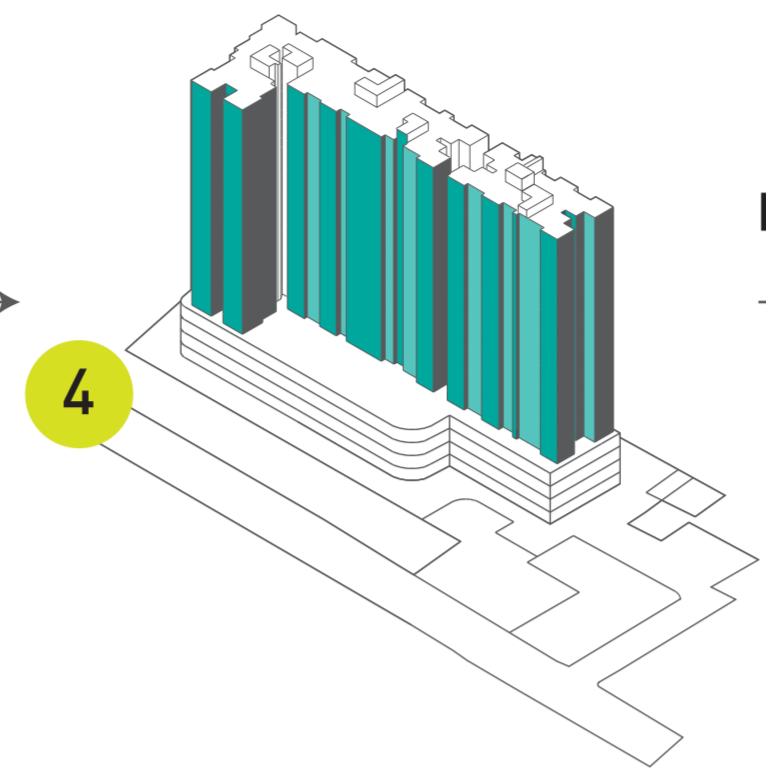
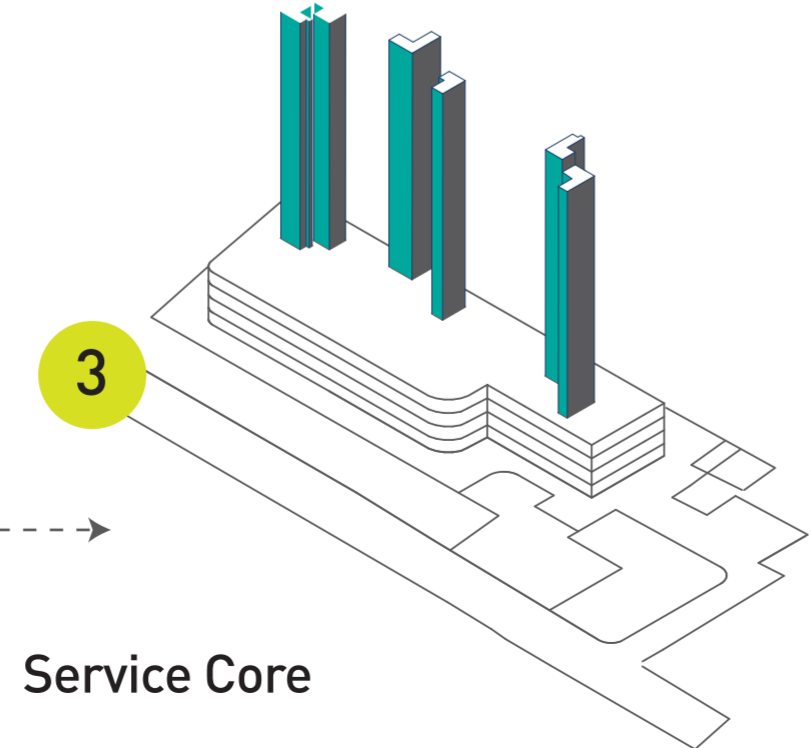
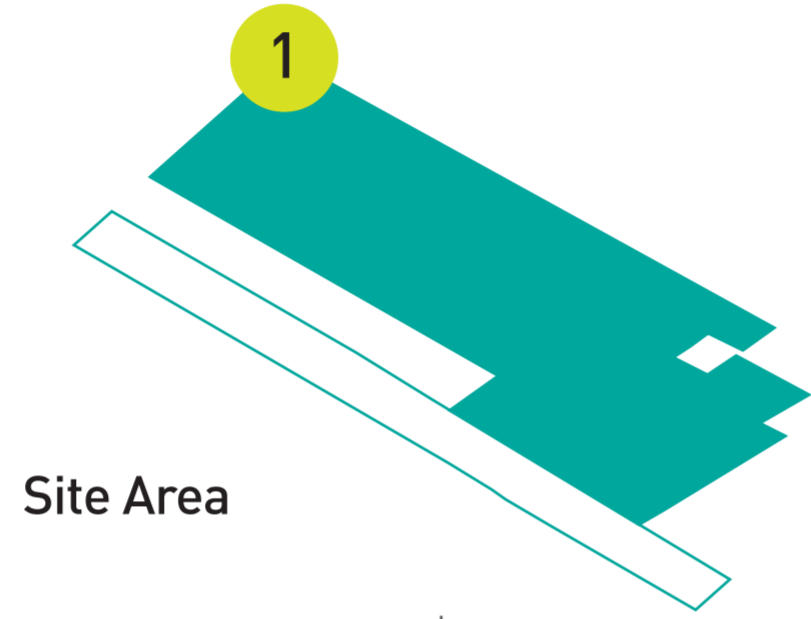
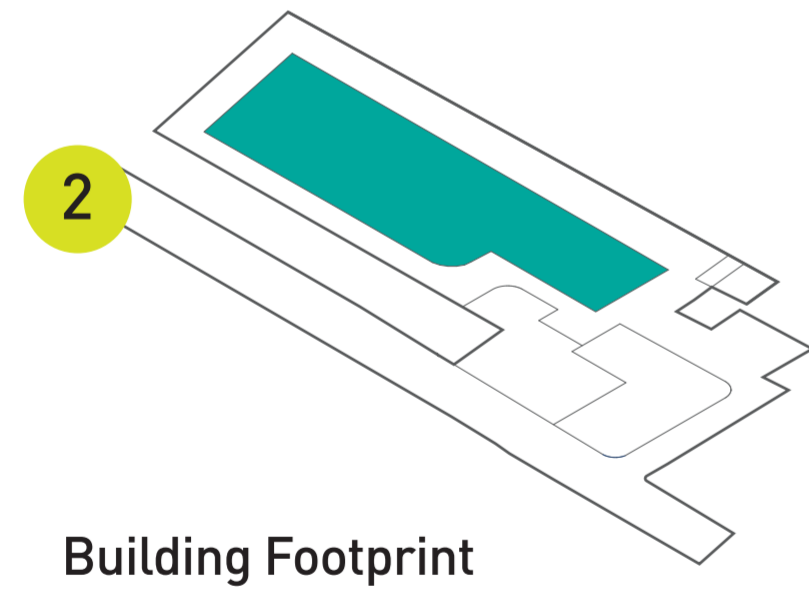


Axonometric Drawing  
of Planned Site



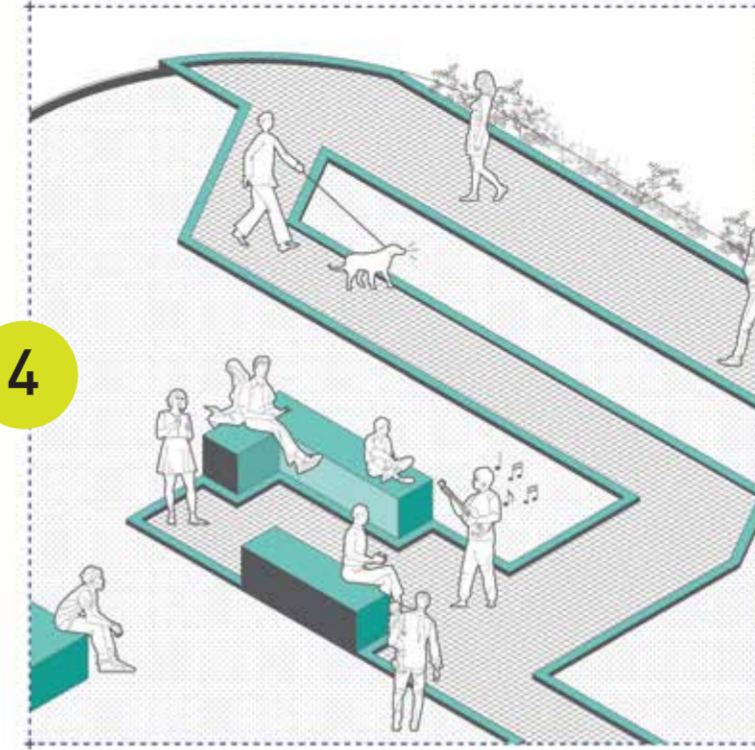
# Smart Site Zoning

for Optimal Spatial Allocation



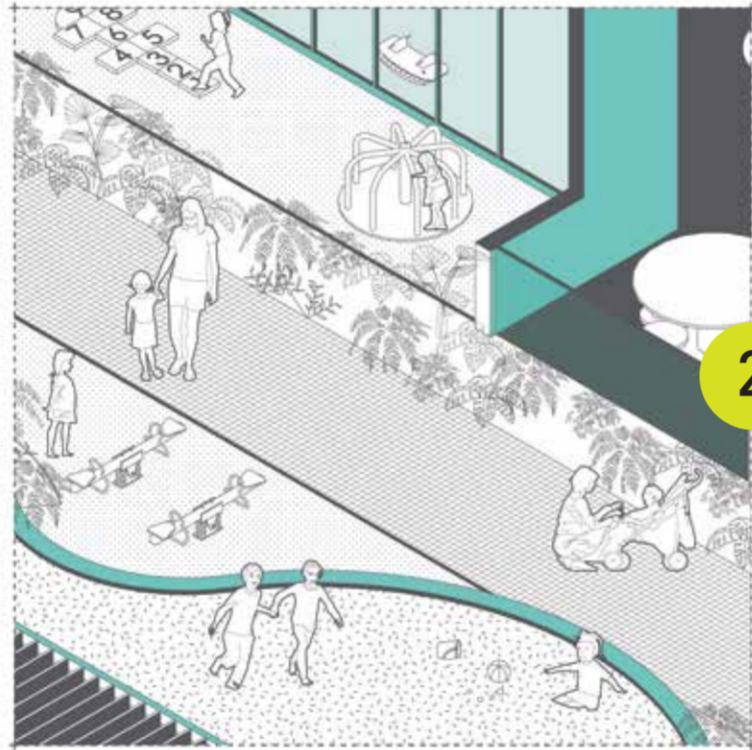


1  
Exclusive  
Podium Plaza  
with Seating

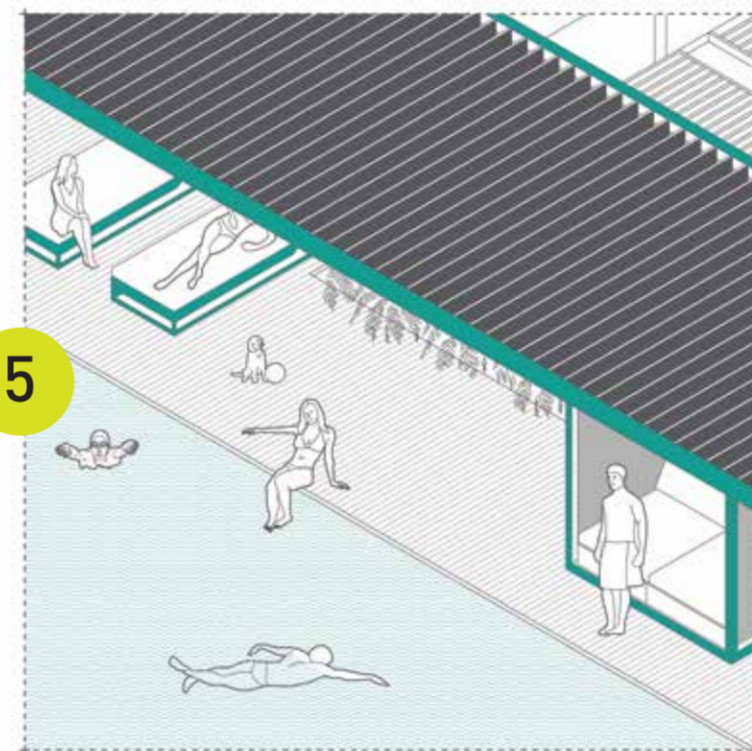


4  
Scenic  
Ground Level  
Walking  
Plaza

Indoor & Outdoor  
Children's Play Areas



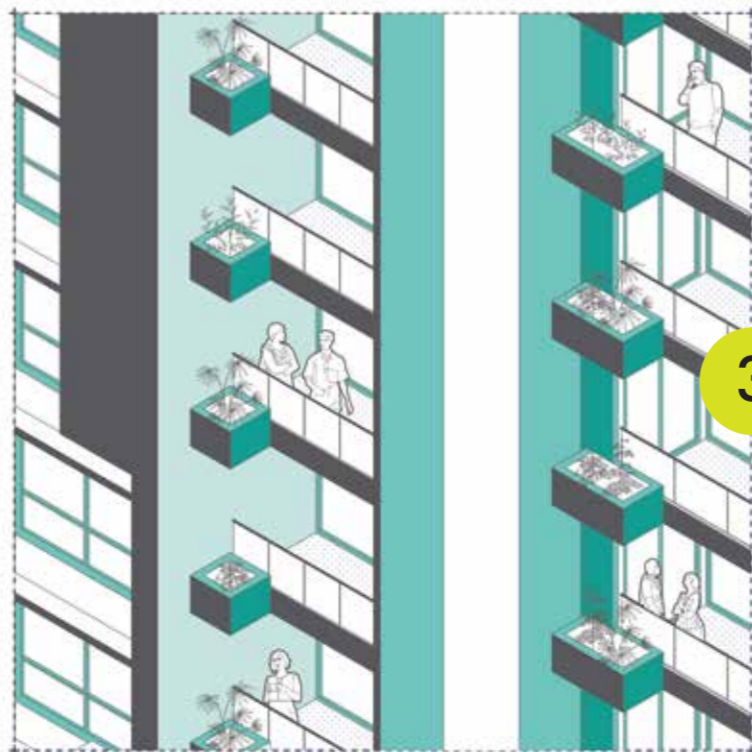
2



5

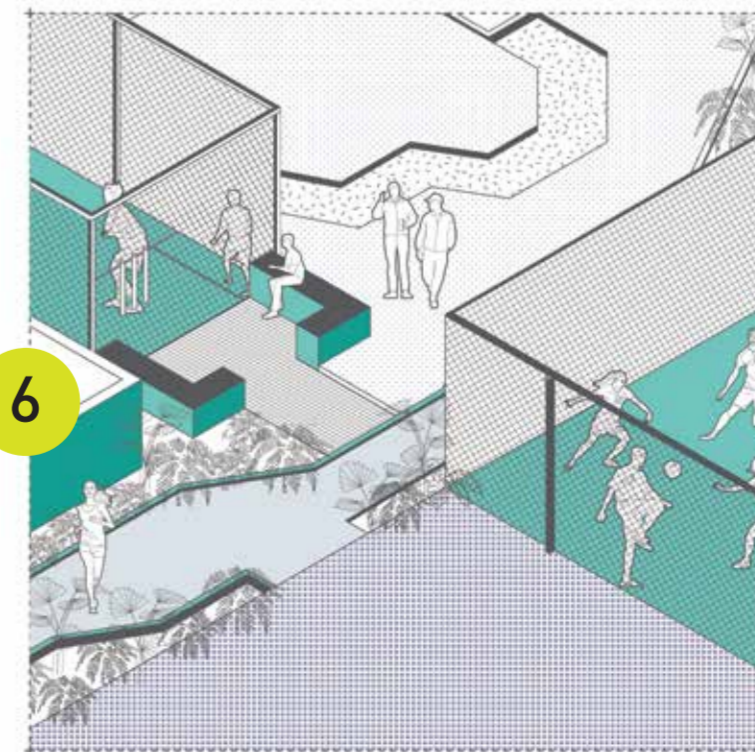
Swimming  
Pool  
with  
Massive  
Deck

Evergreen  
Residential Façades



3

Expansive  
Sports  
Area



6

**Ingenious  
Amenity  
Planning  
for  
Efficient People  
Distribution**



“  
*There are no coincidences  
in nature, nor are there any  
within the realms of architecture;  
especially within a  
nature-inspired project  
the likes of Amberwood.*  
”



# AN ENTHRALLING CREATION INSPIRED BY NATURE

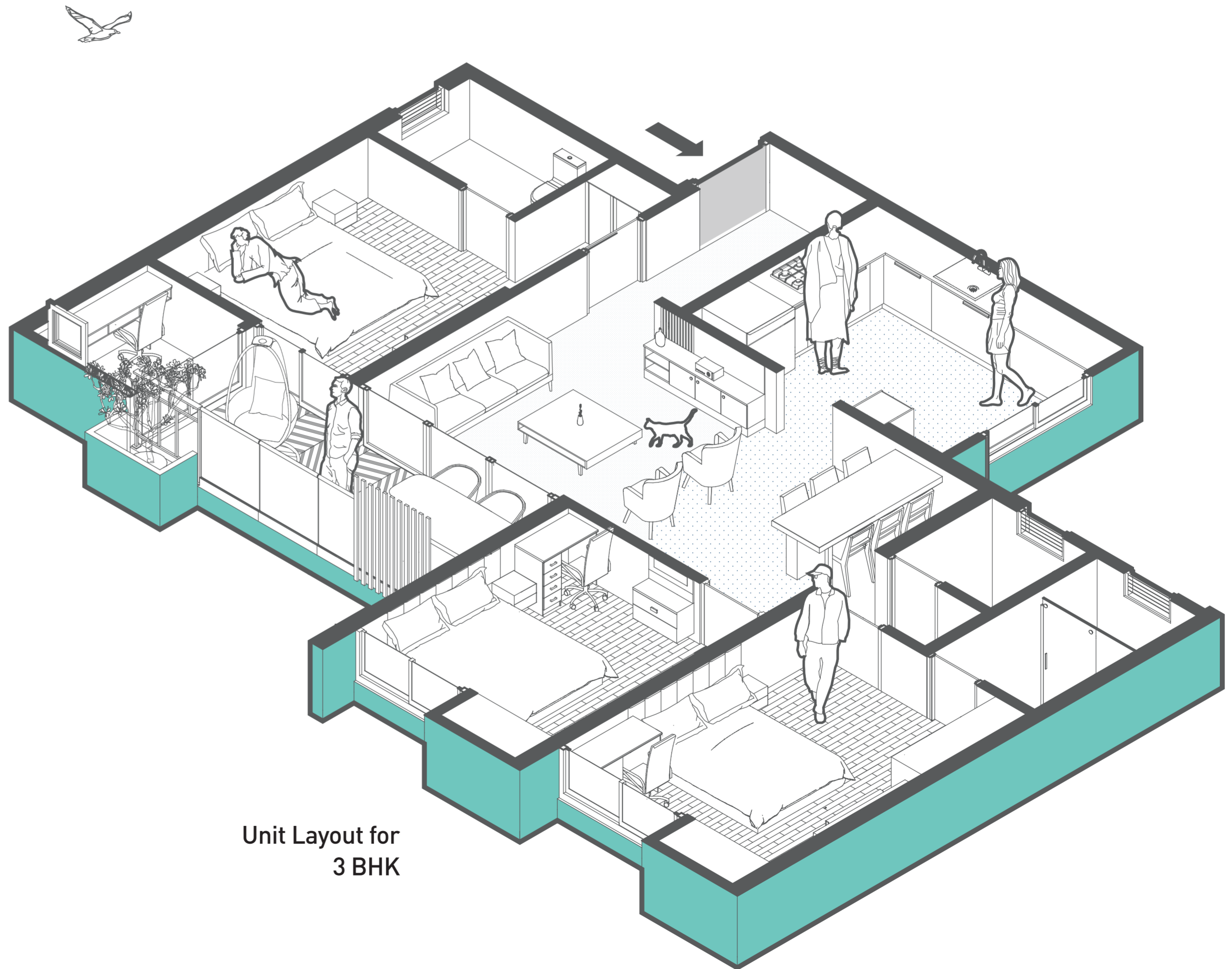
Decorated with striking façade lines inspired by rustic textures from the woods, and complemented by a richly azure water body and numerous inventive sculptures; Amberwood is where you can witness a conscious fusion of nature and lifestyle that goes well beyond surface-level aesthetic considerations.

Breaking all conventional design benchmarks and exploring possibilities yet unimagined; each building within this project flaunts distinctive architectural elements that ever remain individually unique, whilst also staying in harmony with the overall visual narrative that binds this project together.

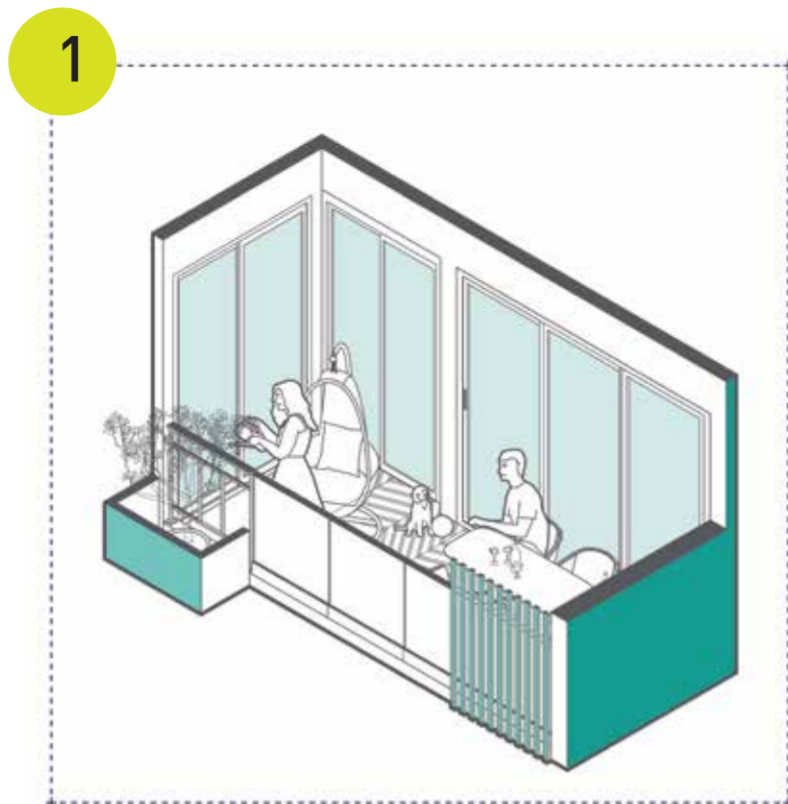


# THE INTERIOR DREAMSCAPE

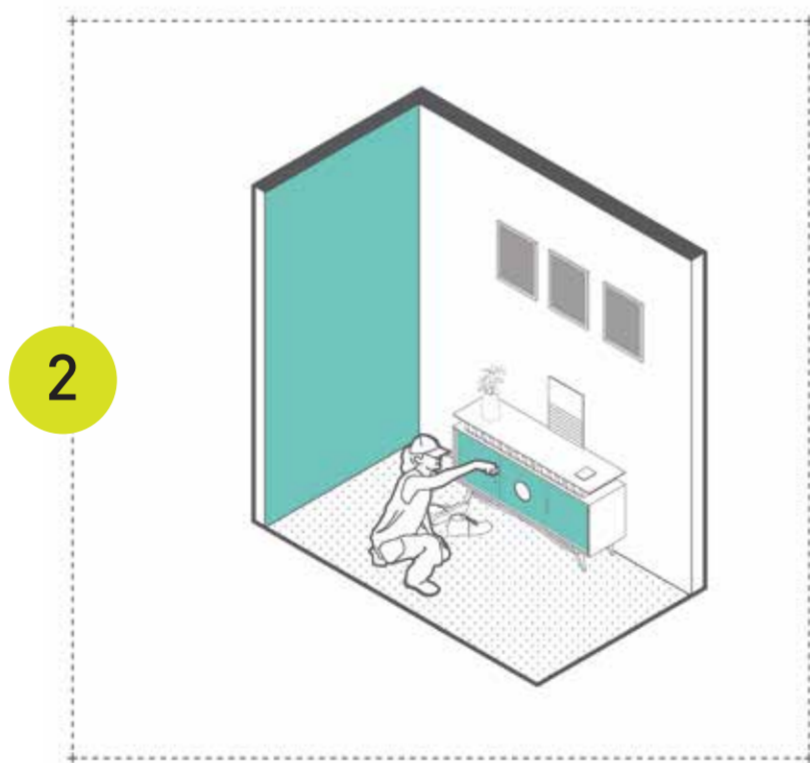
Efficient space use is beautiful space use, and Amberwood is a prime example of the same. With thorough unit planning to amplify spatial efficiency and layout versatility within every single abode, Amberwood exploits every last square inch of space to its very greatest potential.



***Intricate  
Spatial  
Detailing  
for Effortless  
Home Organization***



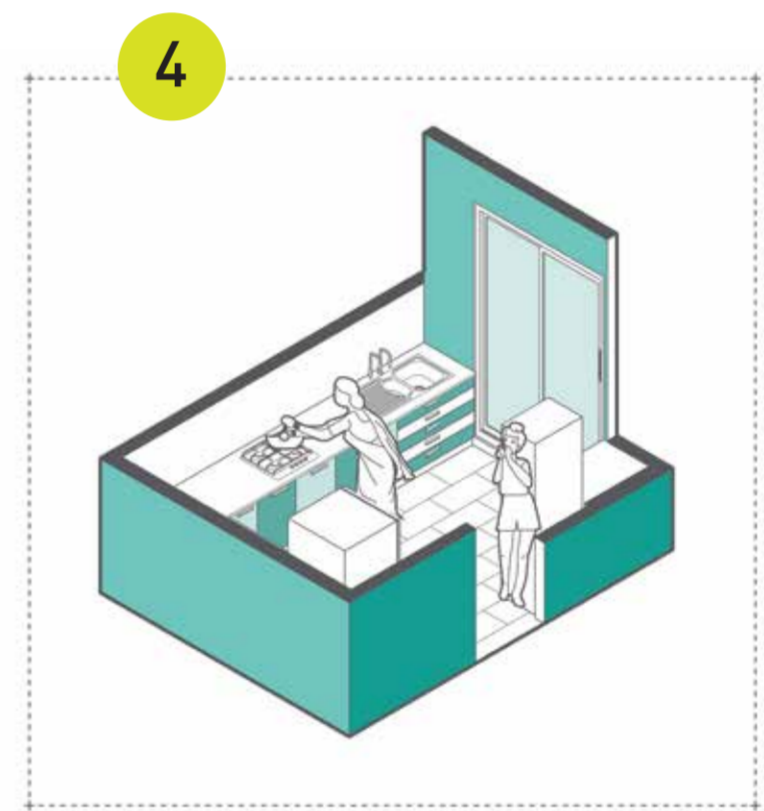
**Built-in Planter  
Boxes for a Green Façade**



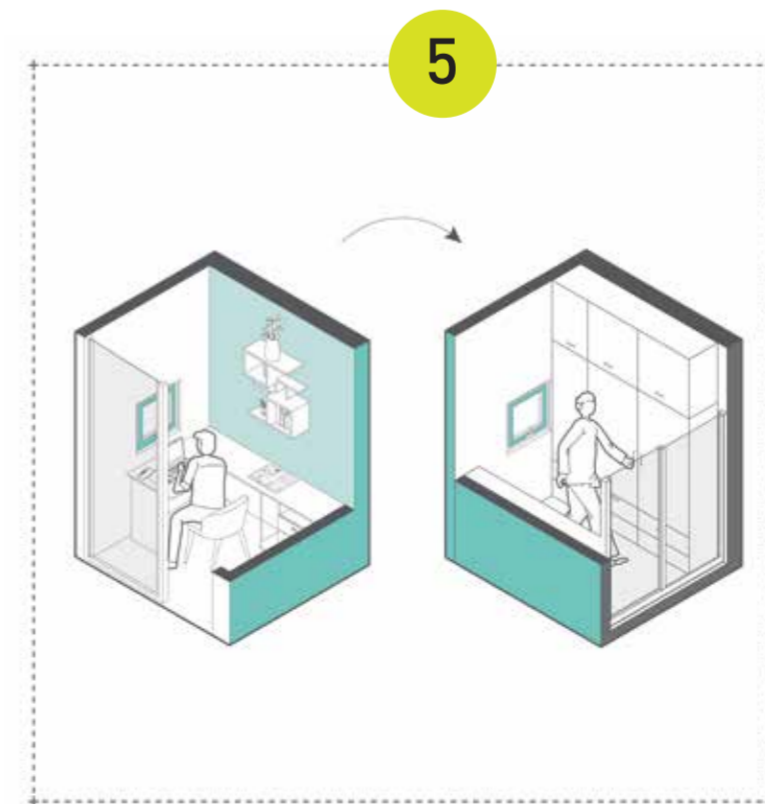
**Spacious Multipurpose  
Entrance Lobbies**



**Cleverly Crafted  
Bedrooms**



**Intuitively  
Designed  
Kitchen  
Layouts**



**Multipurpose  
Room with  
Scenic Views**





Cover Story

# THE FOREST OF LUXURIES

Come home to a comforting embrace of pure oxygen that cradles your very lungs, emanating from a stunning forest that boasts three hundred evergreen trees that radiate calmness, serenity, and endless amounts of bliss.

Image for representational purposes only



Image for representational purposes only

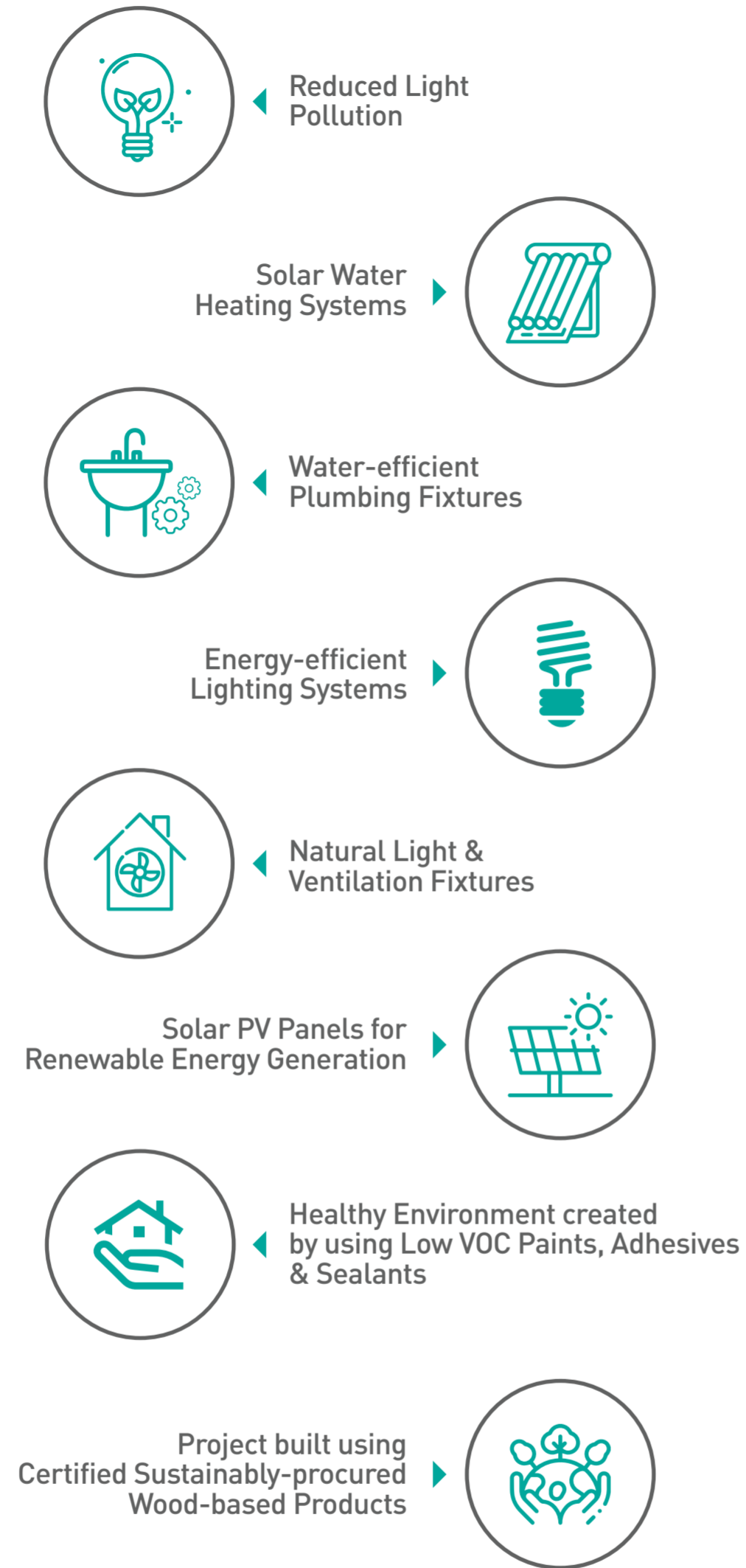


An architectural marvel so outstanding that you'll discover new nuances to it at every single step, turn, nook and corner; Amberwood lies at the very confluence of inimitable luxury and breathtaking greenery; complemented by smart planning, stunning views, futuristic designs, incomparable spaciousness, limitless amenities and unparalleled extravagance.

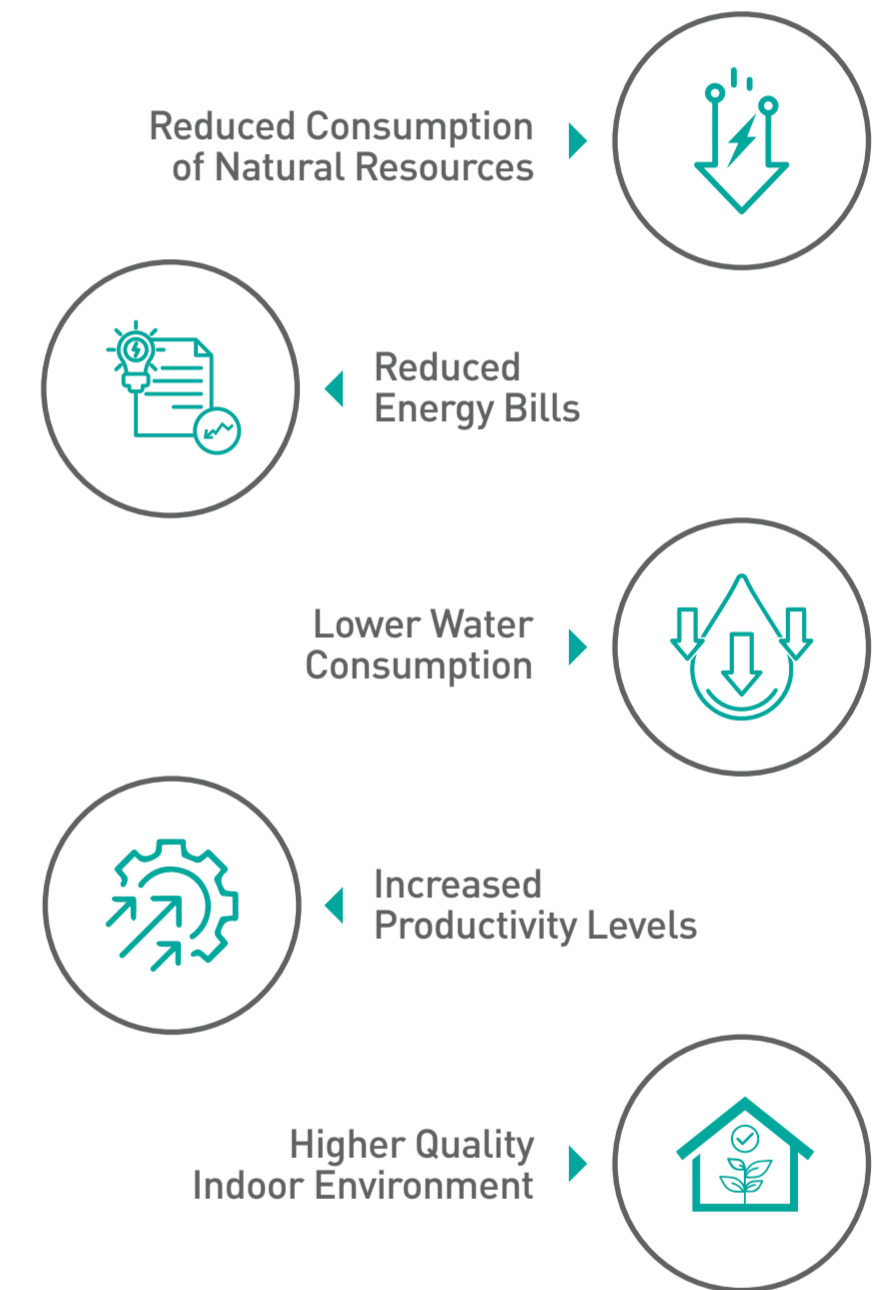
***"Amberwood is an experiential retreat that enriches every single aspect of one's very soul."***



**Eco-conscious  
Project  
Features**



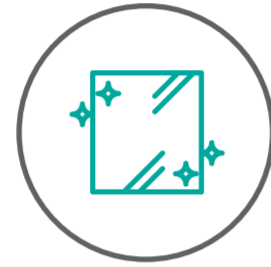
**Green  
Building  
Benefits**





◀ Halon-free Fire Suppression Systems

High-performance Glazing for Optimized Energy Efficiency & Maximized Light Penetration ▶



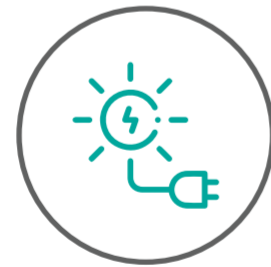
◀ Improved Indoor Air Quality with Less Pollutants & Less Hazardous Gases being released

Comfortable Indoor Temperatures & Adequate Natural Lighting ▶



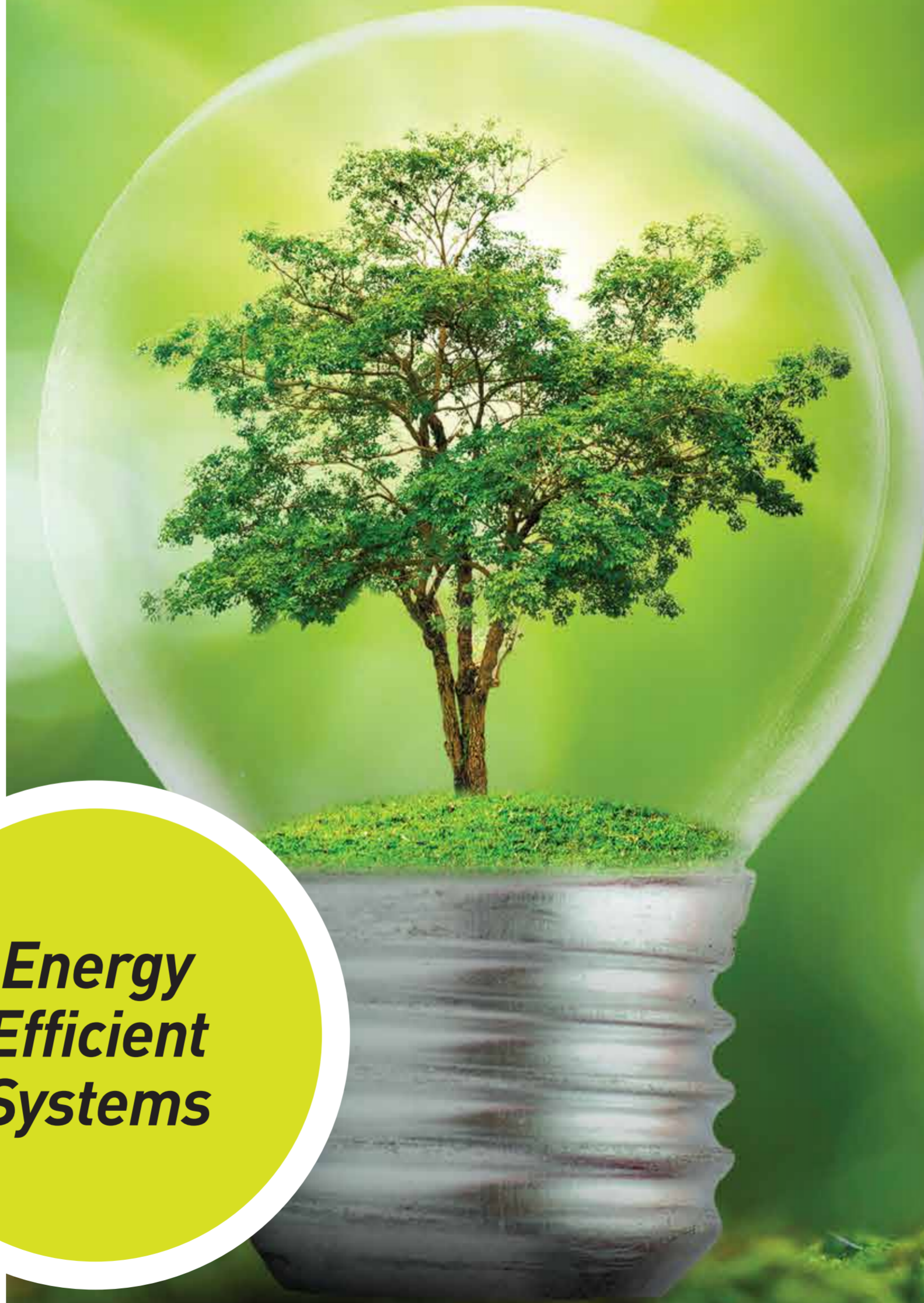
◀ Energy-efficient Building Envelope Design for Maximal Thermal Comfort

Reduced Dependency on Conventional & Non-renewable Electricity Sources ▶



◀ Timer-based Controls for All Non-emergency, Exterior & Common Area Lighting

## Energy Efficient Systems



## Water Conserving Fixtures

Rainwater Harvesting System for Water Conservation & Replenishment ▶



◀ Reduced Water Requirement owing to a Landscape Design that excludes Non-native / Exotic Plant Species



## DESIGNED FOR OPTIMAL ENERGY UTILISATION

## PLANTATION OF FRUIT-BEARING & NATIVE TREES



Effective Use of Produced Compost for Landscaping Purposes

Reduced Environmental Harm owing to Reduced Dependency on Virgin Materials



Natural Forest Cover Protection through the usage of Rapidly Renewable Wood/Wood-based Products

Use of Materials with a High Quantity of Recycled Content like PPC (Portland Pozzolana Cement), Tiles, Steel & AAC Blocks



*Crafted For Sustainability*

## USE OF CERTIFIED GREEN BUILDING MATERIALS

## UNPARALLELED WASTE MANAGEMENT

## 79.1% OF HOT WATER POWERED BY RENEWABLE ENERGY

**40%** Reduction in Water Consumption through the use of Water-efficient Plumbing Fixtures

**80%** of All Daylight diverted towards All Habitable Places

**100%** Renewable Energy Generated to be used across Common Areas

*Eco-friendly Resource Usage*



# AN ENTRANCE ADORNED IN 300 TREES

When was the last time you were greeted by a 300-tree-lined forest gloriously placed before an equally stunning entrance promenade? When you do, you'll truly grasp the sheer enormity of the entire landscaping of the utterly mesmerising greenscape that is Amberwood.

“

*They say a greener  
future begins at home.  
And at Amberwood,  
it is your very home.*

”

Featuring trees on every single floor, landscaped green areas seamlessly blended with community spaces, captivating flower beds, open green areas at the project entrance, and an adjacent green plot to complement things; it's like your personal vacation resort in every sense of the term.



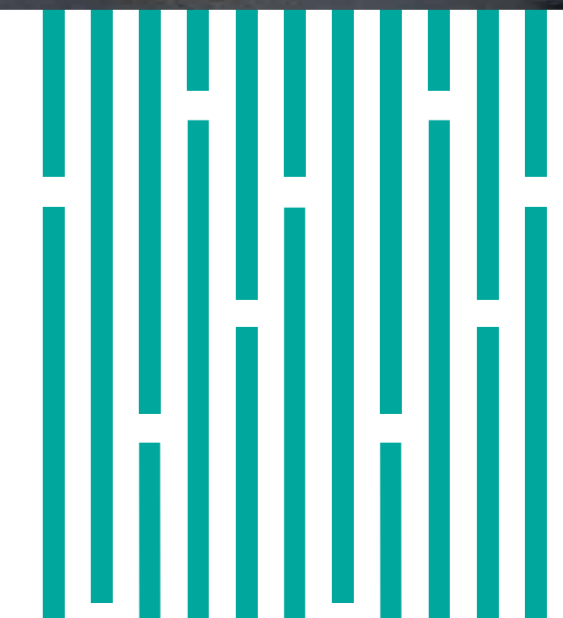


**INDULGE  
IN THE  
VERDANT**

Artistic Impression

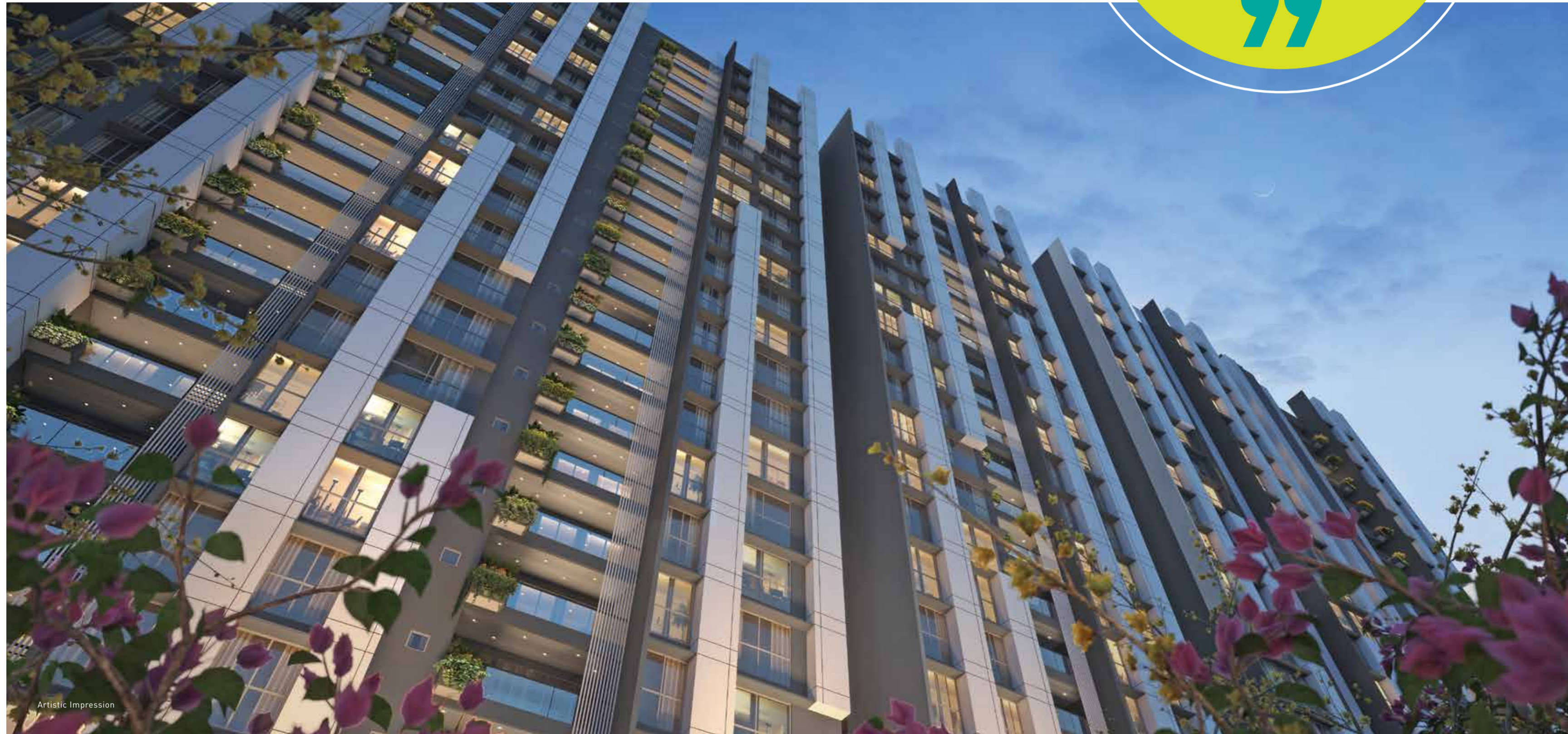


# OPEN DOORS TO A GREEN RETREAT



# GREENERY IS LUXURY

“  
*True luxury doesn't  
just blend-in with nature,  
but also amplifies it,  
nurtures it,  
and celebrates it  
without end.*  
”



Artistic Impression

If you haven't seen horizontally planned architecture yet, Amberwood is something that you need to see with your very own eyes. For every single building within Amberwood sports a façade equipped with built-in planter boxes that add an otherworldly charm and aesthetic appeal to the entire layout. These readymade green pockets are not only eye-catching and enlivening, but also green interventions that visually elevate the entire residential complex look.



# A STUNNING GLIMPSE OF DESTINATION GRANDEUR

“

*Amenities at Amberwood take up as much space as 8 full-fledged residential units, to give residents more than double the 'built-to-open ratio' and truly genuine usability.*

”



**50% OF  
140,000 SQ. FT.**

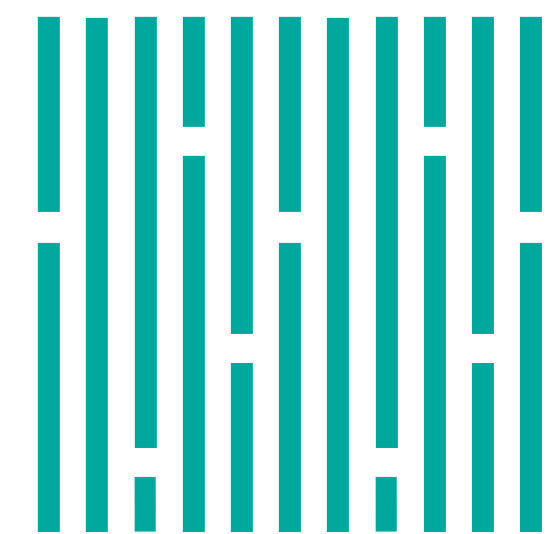
project area reserved exclusively  
for amenities

**12,000 SQ. FT.**

of indoor amenities

**15 FT. HIGH**

indoor amenity floor for  
a grandiose experience





# Legends

## PODIUM AMENITIES

- 1. Swimming Pool
- 2. Semi-covered Kids' Pool with Rain Shower
- 3. Semi-covered Pool Deck with Cabana Seating
- 4. Children's Play Area with Play Station
- 5. Sand Pit
- 6. Rock Climbing Wall
- 7. Social Den with Thematic Gardens
- 8. Multipurpose Area / Party Lawn
- 9. Thematic Landscape Plaza
- 10. Fitness Centre
- 11. Spa and Massage Room
- 12. Jacuzzi
- 13. Herb Garden
- 14. Jogging Track
- 15. Café / Juice Bar
- 16. Indoor Games Room
- 17. Digital Gaming Room
- 18. Sports Simulator Room
- 19. Library and Reading Space
- 20. Indoor Children's Play Area
- 21. Art Room

- 22. Multipurpose Room
- 23. Mini Theater
- 24. Water Feature with Lily Pond
- 25. Squash Court
- 26. Music Room

## OPEN GROUND AMENITIES

- a. Pedestrian Pathway
- b. Jogging Track
- c. Futsal Court
- d. Net Cricket
- e. Sensory Garden with Social Den
- f. Pet Grooming Area
- g. Vehicular Pickup and Drop-off Point
- h. Water Feature with Cascade
- i. Thematic Landscape Plaza

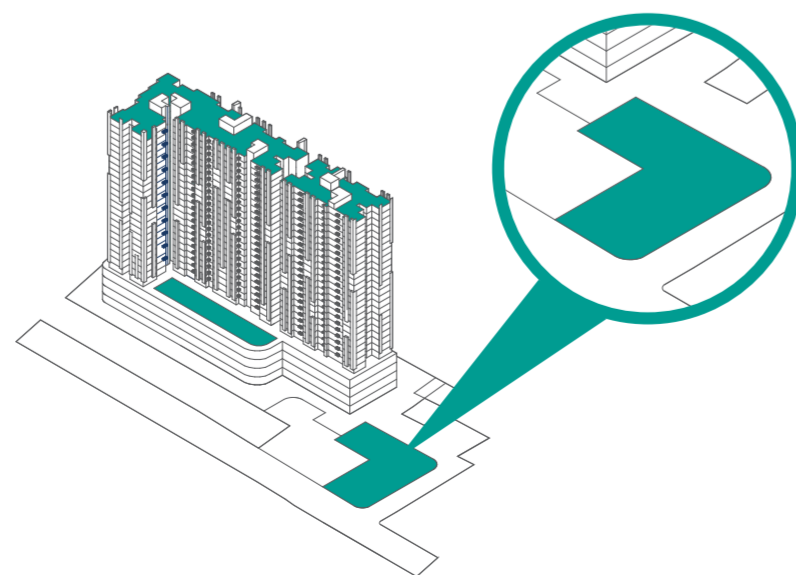


Artistic Impression

- Pedestrian Pathway
- Jogging Track
- Futsal Court
- Net Cricket
- Sensory Garden with Social Den
- Pet Grooming Area
- Vehicular Pickup & Drop-off Point
- Water Cascade Feature
- Thematic Landscape Plaza

“  
*There's a time and a space  
for enjoyment, and  
Amberwood is that timeless  
space that lets you  
experience it, forever.*  
”

## GROUND FLOOR AMENITIES

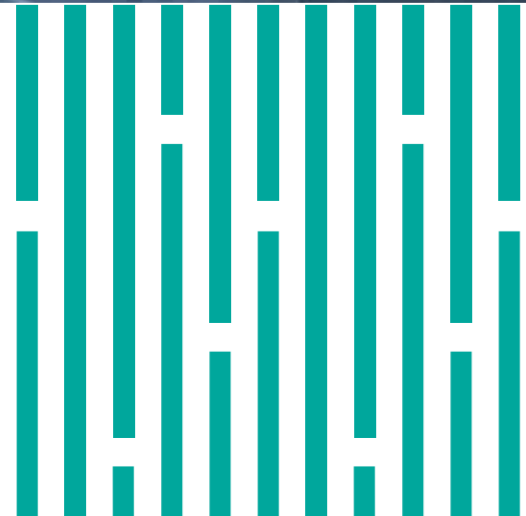






Artistic Impression

*Net Cricket &  
Sensory Garden*



“

Take a deep dive into infinity, or two; for here, there's no stopping you.

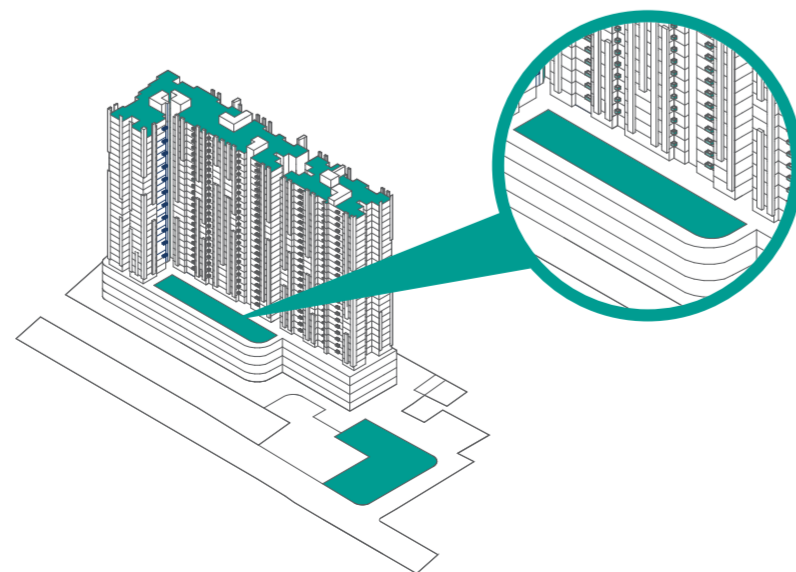
”



Artistic Impression

- Swimming Pool
- Semi-covered Kids' Pool with Rain Shower
- Semi-covered Pool Deck with Cabana Seating
- Children's Play Area
- Sand Pit
- Rock Climbing Wall
- Social Den with Thematic Gardens
- Multipurpose Area / Party Lawn
- Thematic Landscape Plaza
- Fitness Centre
- Spa and Massage Room
- Jacuzzi
- Herb Garden
- Jogging Track
- Café / Juice Bar
- Indoor Games Room
- Digital Gaming Room
- Sports Simulator Room
- Library and Reading Space
- Indoor Children's Play Area
- Art Room
- Multipurpose Room
- Mini Theater
- Water Feature with Lily Pond
- Squash Court
- Music Room

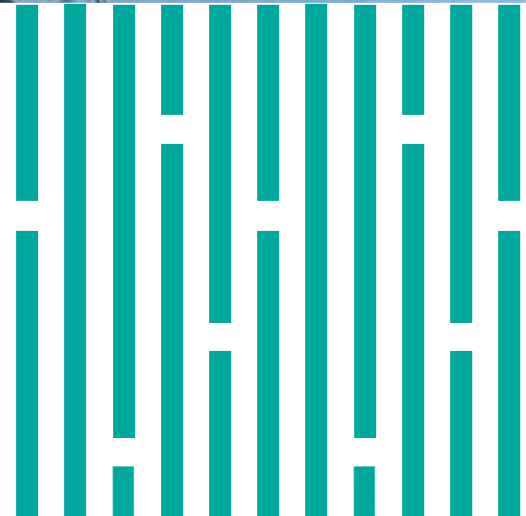
# PODIUM FLOOR AMENITIES





Artistic Impression

**Swimming Pool**





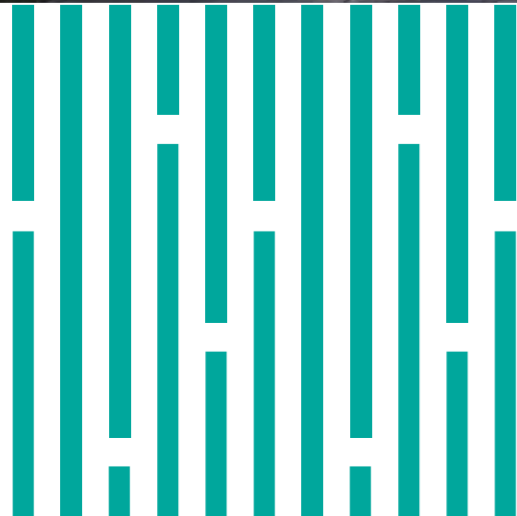
Artistic Impression

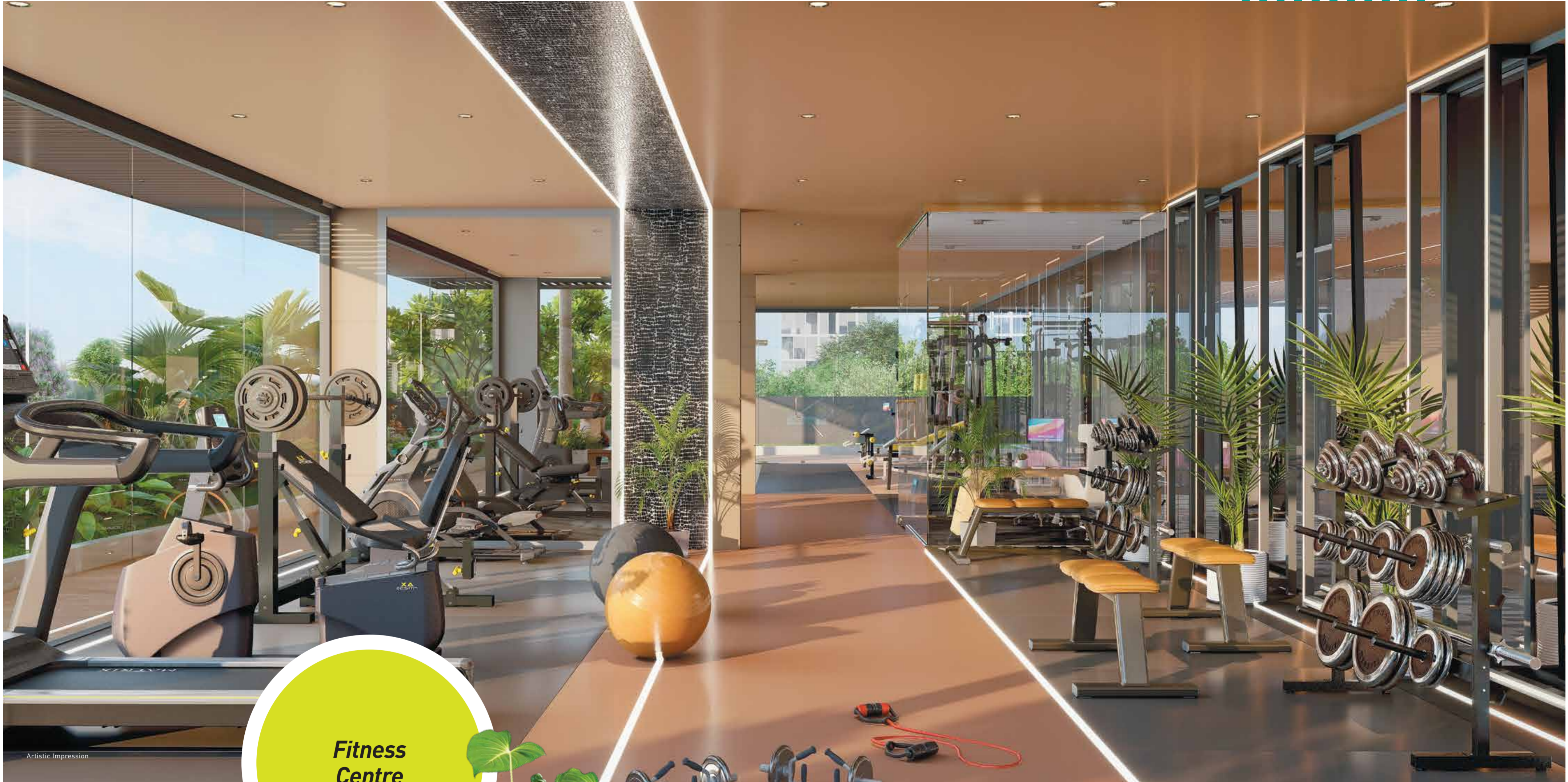
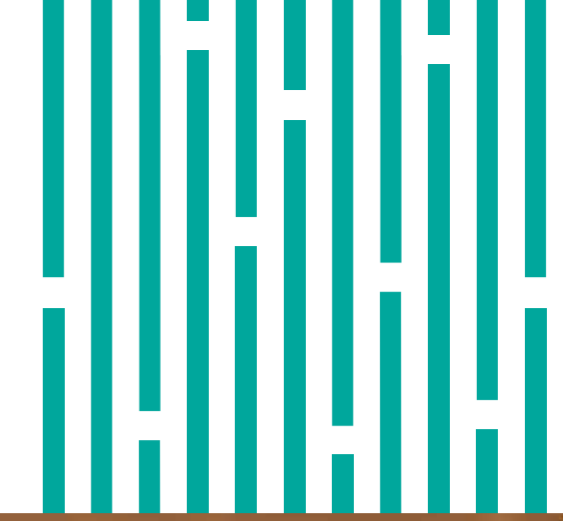
**Children's  
Play Area**





**Multipurpose Area /  
Party Lawn**





Artistic Impression

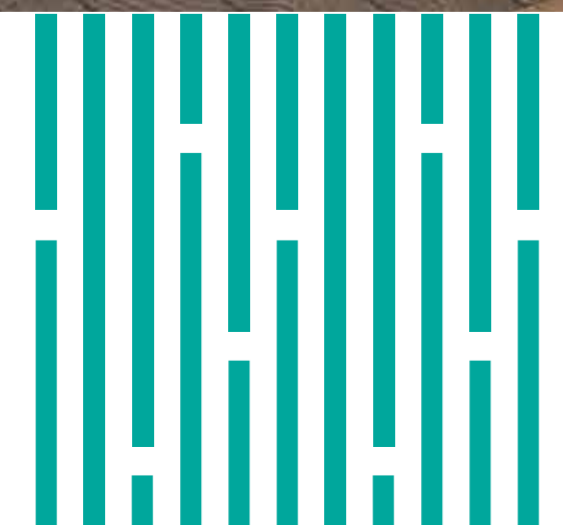
**Fitness  
Centre**





Artistic Impression

**Indoor  
Games  
Room**





Artistic Impression

**Indoor  
Clubhouse  
Lounge**

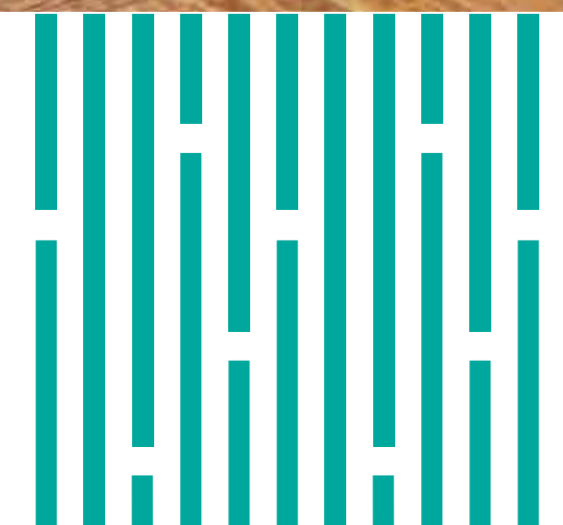






Artistic Impression

*Indoor  
Children's Play  
Area / Crèche*





Artistic Impression

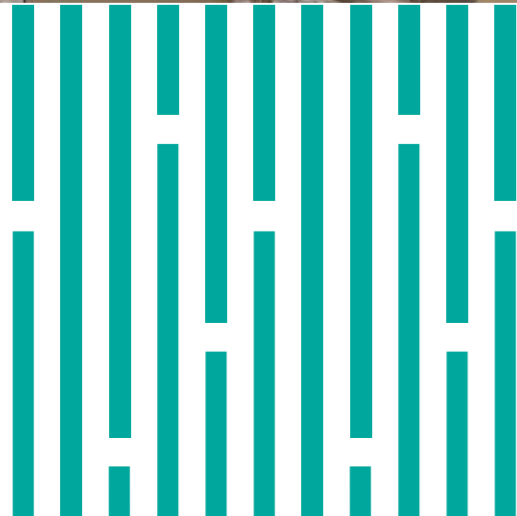
**Library and  
Reading Space**





Artistic Impression

**Multipurpose  
Room**





**Café /  
Juice Bar**

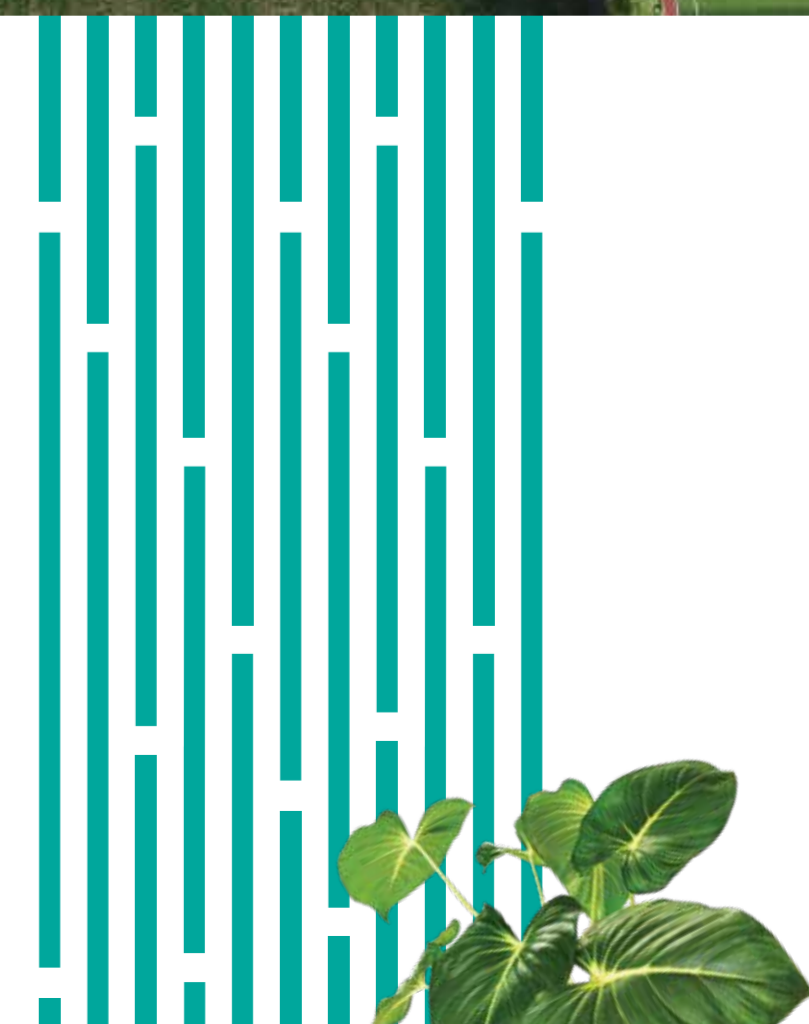




## Legends

### TERRACE AMENITIES

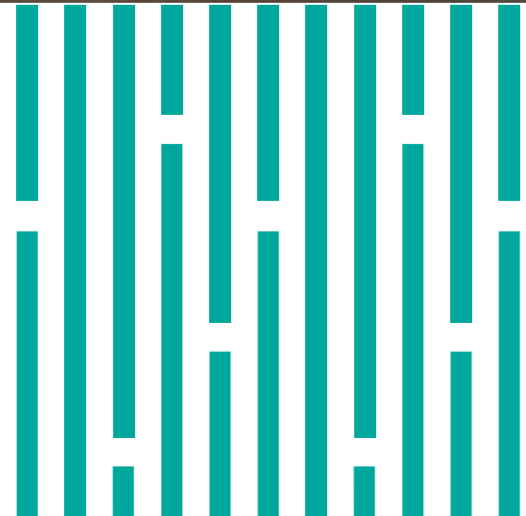
1. Kids' Activity Area
2. WFH Sit-outs
3. Gazebo Seating
4. Party Area
5. Barbecue Area
6. Zen Garden
7. Yoga Zone
8. Reflexology / Crossfit Zone
9. Jogging Track
10. Lounge Seating with Barbecue Pit
11. Putt Golf
12. Open-air Cinema Space
13. Sunken Court with Dry Landscape Area





Artistic Impression

**Party  
Lounge**





**Kids'  
Activity  
Area**



Artistic Impression

# AN ETERNAL TRYST WITH NEVER-ENDING EXTRAVAGANCE

## 4 STOREYS

of parking spaces

## 4 HIGH-SPEED ELEVATORS

within each building

## 4.5 METER

indoor amenity floor for  
a grandiose experience

## EXCLUSIVE ACCESS

via separate gates

## COVERED SEATING

for all-weather comfort

## INDOOR & OUTDOOR

play areas for kids

“

*True indulgence is  
having the freedom  
to explore life  
without limits.*

”



Artistic Impression

*Herb Garden*





# WHEN DESIGN HAD A RENDEZVOUS WITH EMPATHY

*"With spaces that are both people-centric as well as nature-friendly, the architecture here leaves no stones unturned when it comes to making experiences enjoyable."*

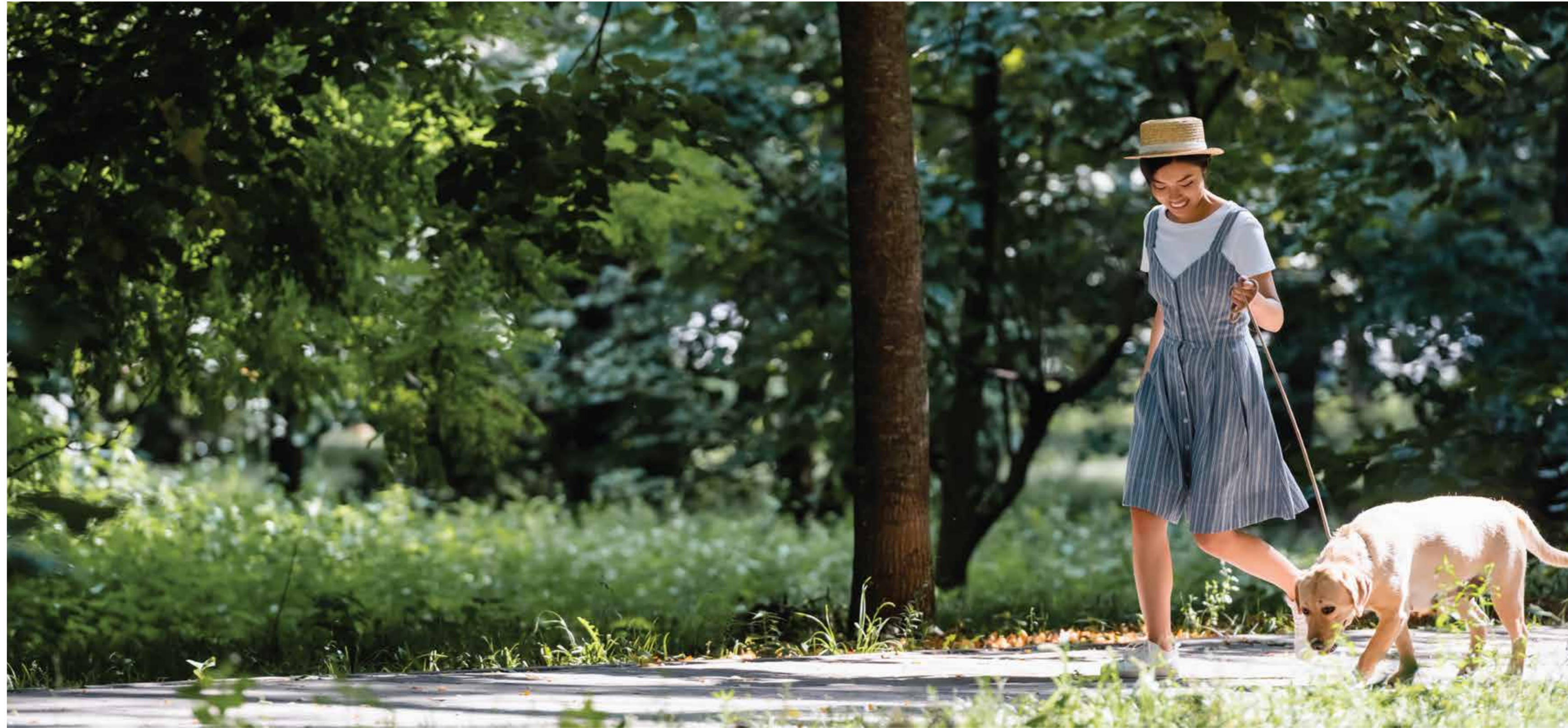


Image for representational purposes only





# Specifications

## Entrance Lobby (Ground Floor)

Decorative Ceiling Lights  
Automated Door  
Air Conditioned Lobby  
Marble / Granite Flooring and Wall Cladding

## Structure

Earthquake-resistant RCC Frame Structure as per Seismic Design

## Partition Walls

RCC Walls / AAC Blocks

## Painting & Wall Finishes

Internal Wall with Gypsum Finish and, Jotun or Equivalent Acrylic Emulsion Paint  
Texture Surface and Top Coat Acrylic Paints for External Surfaces

## Flooring

Marble Finished Vitrified Tiles

## Terrace / Sit-out

SS Railing with Laminated Glass  
Wooden Finish Floor Tiles  
Drain Channels in Sit-out Area

## Kitchen

Scratch-resistant SS Sink with Drain Board  
Polished Vitrified Large Format Tiles in Kitchen  
Provision for Water Purifier  
Electrical Points for Refrigerator, Oven and Exhaust Fan

## Utility / Dry Balcony

Electric Point for Washing Machine  
Dado Tiles up to Sill Level  
Ceramic / Vitrified Tiles for Flooring

## Bathroom

Concealed CPVC and UPVC Piping  
Exclusive Bathrooms with Premium Designer Sanitaryware (Toto or Equivalent)  
Shower Partition in ENSUITE Bathrooms (Except for Common and Domestic Help Washrooms)  
Mirrors for all Wash Basins  
600 mm. x 1200 mm. Designer Tiles for Flooring and Walls  
False Ceiling with Light Fittings in Bathrooms  
Provision for Exhaust Fan  
CP Fittings of Toto / Grohe / Jaquar or Equivalent make

## Doors & Windows

40 mm. Thick Designer Laminated Wooden Flush Door with Digital Lock by Yale / Godrej or Equivalent at Apartment Entrance  
32 mm. Thick Laminated Flush Doors with Premium Fixtures  
System Windows with High Performance Glass  
Granite / Artificial Stone Sills in Windows

## Electrical Fixtures

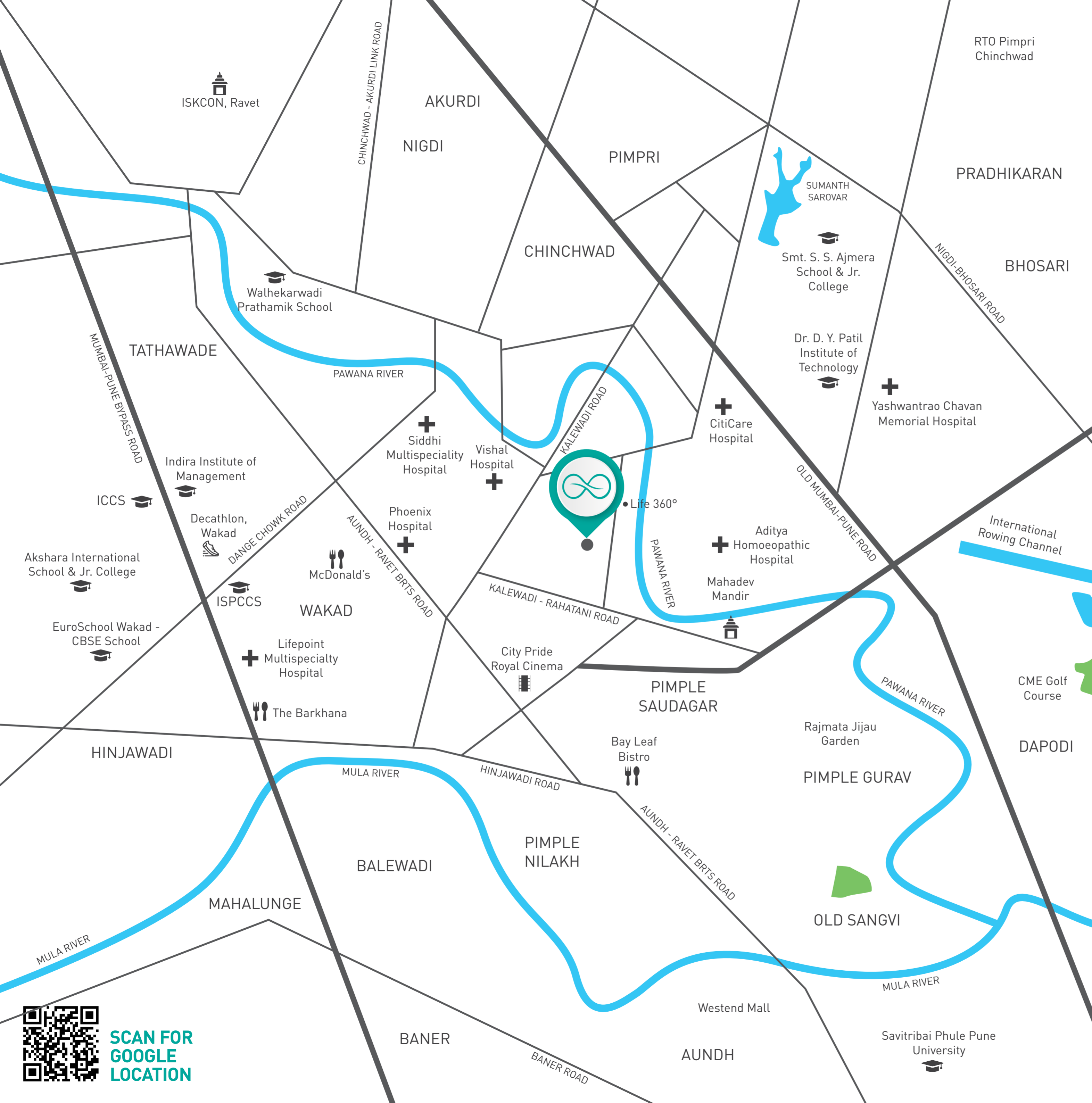
Premium Modular Switches by Wipro / Legrand / Schneider or Equivalent  
Concealed Copper Wiring with Circuit Breakers  
Provision for Inverter, Broadband, Telephone and Cable / DTH Connection  
Video Door Phone with Intercom Facility  
Provision for AC in Living Room, Dining Room and all Bedrooms

## Automation & Security

Colour Video Door Phone

## Common Amenities

High-speed Elevators fitted with Auto Rescue Devices (ARDs)  
Energy-efficient LED Lighting in Designated Common Areas  
Power Backups for Elevators  
Washroom Facilities for Domestic Help in Parking Area  
False Ceilings in Lift Lobbies  
24-hour CCTV Camera Surveillance in Designated Common Areas  
Advanced Secure Firefighting System with Fire Staircases and FHCs  
Sprinkler Systems throughout the Building



## KEY DISTANCES

### Key Hotspots

Moshi - Hinjawadi BRTS Road	1.9 km
Wakad - Dehu - Alandi BRTS Road	2 km
Aundh - Ravet BRTS Road	2.6 km
Pune - Bengaluru NH4 Highway	5.5 km
Pimpri Railway Station	2.6 km
Nashik Phata (Bhosari) Metro Station	4.2 km
Pune Railway Station	15.3 km
Pune Airport	19 km

### Schools

SNBP International School	1.7 km
VIBGYOR School	2.5 km
Wisdom World, Wakad	3.2 km
Orchid School	3.6 km
Elpro International School	4.2 km
Euro School, Wakad	4.3 km

### Business Hubs

Chakan MIDC	3.8 km
Hinjawadi IT Park	7.2 km
Talawade IT Park	13.8 km
Talegaon MIDC	30 km

### Hospitals

Lotus Multispecialty Hospital	1.3 km
Aditya Birla Memorial Hospital	4.2 km
Jupiter Hospital	7.3 km
ONP Tulip Hospital	12.3 km

### Sports Zones

PCMC Ground	1.3 km
Chondhe Patil Sports Complex	4.2 km
Balewadi Sports Complex	9 km
MCA Cricket Stadium	14.4 km

### Banks

Axis Bank	1.5 km
State Bank of India	2.1 km
ICICI Bank	2.6 km
HDFC Bank	2.8 km

### Fitness Centers

Gold's Gym	1.5 km
Endure Fitness Club	1.7 km
NXTFIT Crosstraining Studio & Gym	1.9 km
Multifit Gym	2.5 km



# A WORD ABOUT THE CREATORS

As two leading real estate brands with decades of experience in creating phenomenal structures and delivering on their promises well ahead of time, both SMP Realty as well as Namrata Group have played a key role in the city's revolutionary transformation. Keeping pace with people's ever-changing needs and building futuristic projects that maintain unparalleled harmony between humanity and ecology, they have not only made thousands of loyal customers joyful beyond all imagining, but also given them a green future that even their next generations can enjoy; reliably, purposefully, and utterly peacefully.

# ABOUT THE DEVELOPERS



With a 15+ year legacy of crafting grandiose structures, SMP Realty is one of Pune's most trusted names within the realm of real estate. Having delighted well over 8,000 families through their 30+ marvelous projects all across the city, their real estate creations currently span a total of 8 million sq. ft., with 1 million sq. ft. of spaces currently under development.



With well over 4 decades of successful presence within Pune's ever-expanding real estate landscape, 8,000+ joyfully loyal customers and over 150 residential and commercial spaces to boast; Namrata Group is a realty behemoth renowned for making luxurious lifestyles accessible everywhere. Through their innovative designs and futuristic approaches to real estate development, they have created sustainable ecosystems that have redefined lifestyles everywhere.

# CONSULTANTS

## PRINCIPAL ARCHITECT

**Shitesh Agrawal**  
Sankalp Designers

## RCC CONSULTANT

**Hemant Nimbalkar**  
GABCPL

## LANDSCAPE CONSULTANT

**Nimesh Porwal**  
Studio MAAP

## IGBC CONSULTANT

**Anshul P. Gujarathi**  
Eco Solutions

## PROJECT ARCHITECT

**Sourabh Laghate**  
Sankalp Designers

## EC CONSULTANT

**S. Sahastrabudde**  
Vertex Enviro

## ELECTRICAL CONSULTANT

**Narendra Chavan**  
Siddhivinayak MEP Consultants

## PLUMBING CONSULTANT

**Nilesh Gandhi**  
ACE Consultants

## PROJECT MANAGER

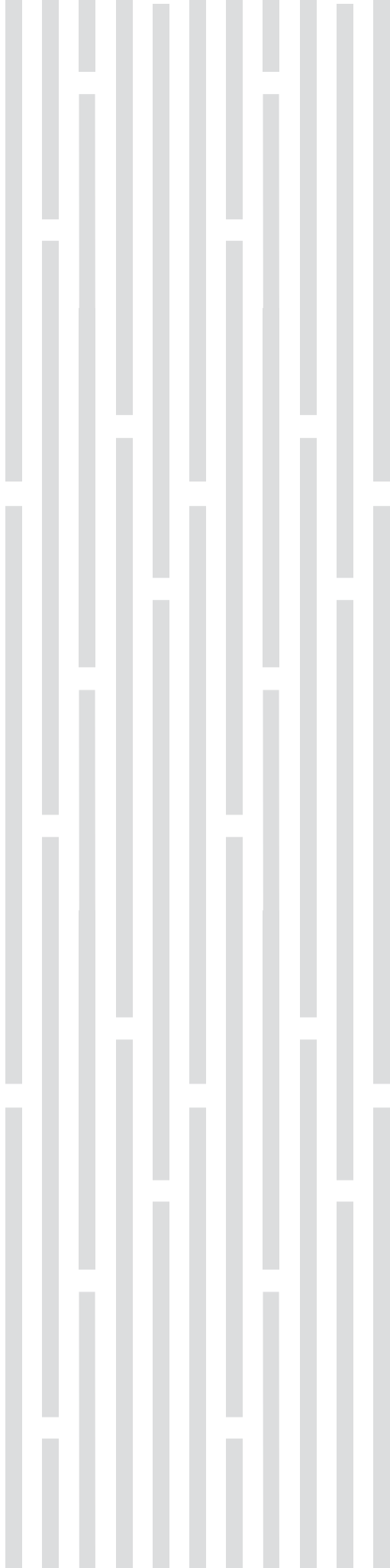
**Tanmay Shah**  
SMP Namrata

## PROJECT MANAGER

**Kunal Gaikwad**  
SMP Namrata

## BRANDING AND 3D VISUALIZATION

**Vikas Poddar**  
Square One



A Project By



Site Address

Amberwood, Pawana Nagar, Rahatani, Pimpri-Chinchwad, Maharashtra - 411017

7787879595 | sales@amberwoodpune.com | www.amberwoodpune.com

All Rights Reserved - No part of this brochure will be reproduced, stored or transmitted in any form or by any means, electronic or mechanical, including photocopy or recording on any other information storage or retrieval system, without the written permission of Square One Media Solutions Pvt.Ltd. Brochure Concept, Design & 3D Imagery: Square One Media Solutions Pvt. Ltd., Unit 4D, 6<sup>th</sup> Floor, B3 Cerebrum IT Park, Kalyani Nagar, Pune, Maharashtra 411014  
This brochure is purely conceptual and not a legal offering. The developer reserves all the rights to add, delete, alter any detail, specifications, elevation mentioned herein. The brochure is indicative of how the furniture can be arranged in the residential unit. No furniture is to be supplied to the purchaser by the developer unless otherwise mentioned. All images, unless otherwise indicated are used for illustrative purpose only.



P52100055677  
TOWER A & B

0% green cover was harmed in the creation of this brochure.

