

A PROJECT BY



Site Add.: Satre Happynest, Opp Udyan Darshan Building, Datar Colony, Kanjurmarg East, Mumbai - 400042.

Call: 91525 22284 / 91525 22282

Regd. Office Add.: G1 & G2, Bldg. D1, Vedant Complex, Vartak Nagar, Thane West 400606.

Call: 022-20810487 | **Web.:** www.satrehousing.com | **Email:** sales@satrehousing.com

Disclaimer: Satre Happynest is proposed for Ground + 35 Floors. The plans, specifications, image and other details herein are only indicative and subject to the approval of the concerned authorities. The Developer/Owner reserves the right to change any or all of these in interest of the development, without prior notice or obligation. Artist's impressions are used to illustrate the amenities, specification, image and other details and these may be applicable to select apartments only. Tolerance of +/-2% is possible in the unit areas on account of design and construction variance. All brands stated are subject to final decision of the project architect. This printed material does not constitute an offer and/or contract of any type between the Developer/Owner and the recipient. Any Purchase/Lease of this in development shall be governed by the terms and conditions of the agreement for Sale/Lease entered into between the parties, and no detail mentioned in this printed material shall in any way govern such transaction.



Maharera Registration. No: P51800054595, available on www.maharera.mahaonline.gov.in

SATRE HAPPYNEST

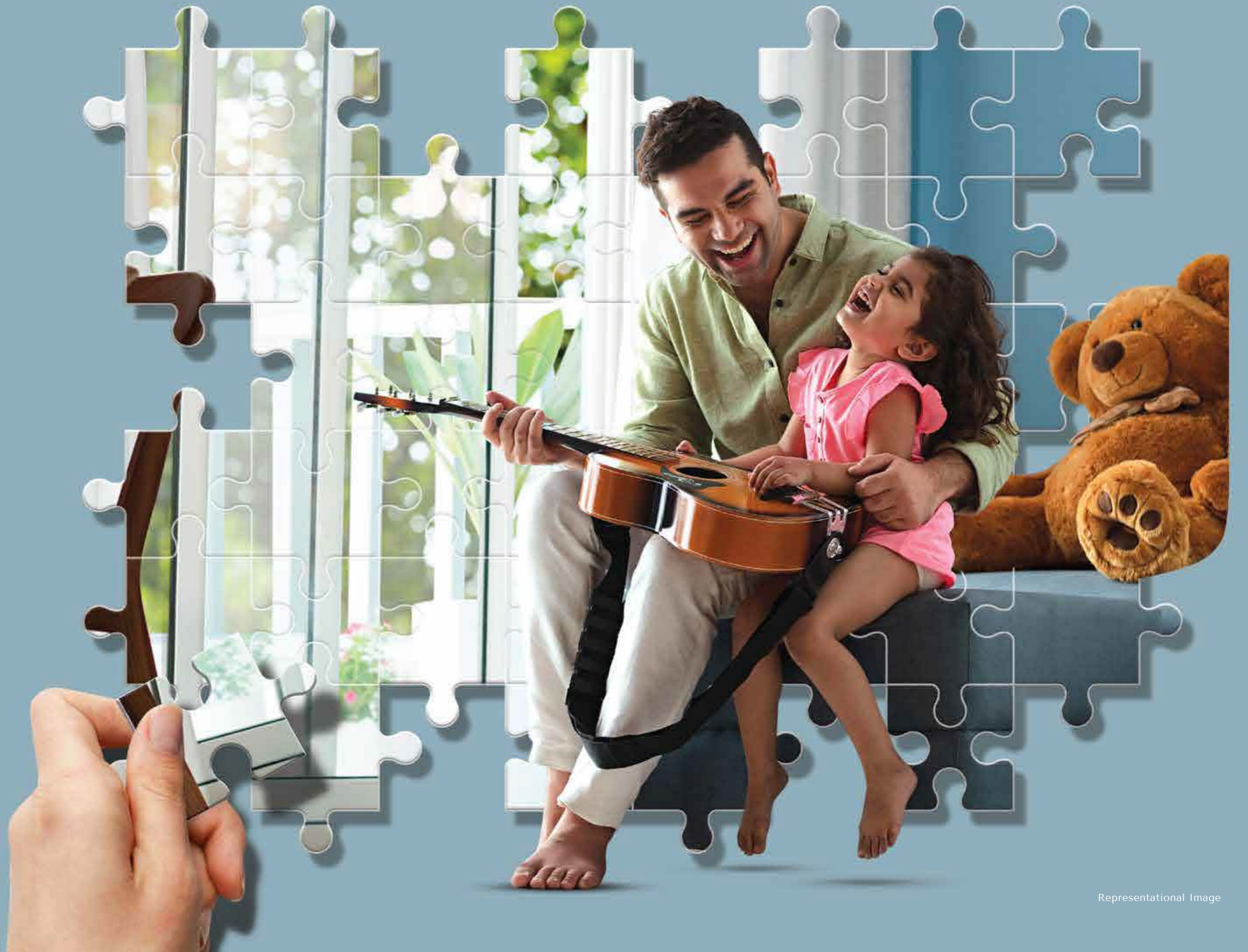
KANJURMARG (EAST)



A HOME THAT FITS YOUR WORLD

A SPACE THAT
**FITS YOUR
NEEDS**

SMART-SIZED
VAASTU COMPLIANT HOMES





A SKYLIFE THAT
**FITS YOUR
DREAMS**

LAVISH ROOFTOP
INDULGENCES

LOCATION THAT
**FITS YOUR
CONVENIENCE**

ENTERTAINMENT TO SHOPPING,
CONNECTED TO ALL YOUR DAILY NEEDS



PRESENTING

A HOME THAT FITS YOUR WORLD



**SATRE
HAPPYNEST**
KANJURMARG (EAST)

SMART-SIZED 1 & 2 BED HAPPY HOMES



Artist's Impression

Representational Image



PROJECT HIGHLIGHTS



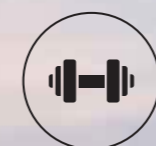
35 Storeyed Tower



Smart Sized Homes
420 Sq. Ft. Onwards



Lavish Indulgences
at Sky Level



Fitness Centre
on 35th Floor



Centrally Located
at Kanjurmarg (E)



24x7 CCTV
Surveillance

KANJURMARG

A WELL-CONNECTED PRIME ADDRESS WITH PANORAMIC VIEWS

Kanjurmarg a prosperous suburb in Central East Mumbai, boasts of excellent connectivity in all directions. It offers convenient access to various lifestyle avenues that are just a short drive away. Kanjurmarg serves as a crucial link between Navi Mumbai and South West Mumbai, offering diverse educational institutions, convenient transportation, quality healthcare facilities, and proximity to government offices.

Embrace a prosperous tomorrow with a home that fits your world.



KANJURMARG, A LOCATION WITH LIMITLESS SATISFACTION



Connectivity

- Bhandup Station
- Kanjurmarg Station
- Proposed EEH Vikhroli Metro Station
- Lal Bahadur Shastri Road
- Eastern Express Highway
- Western Express Highway
- International Airport
- Eastern Freeway



Schools and Colleges

- St. Xaviers High School
- IIT Powai
- IBS Business School
- Bombay Scottish School
- Poddar International School



Shopping and Entertainment

- Dmart
- Hometown
- Metro Mall
- R City Mall



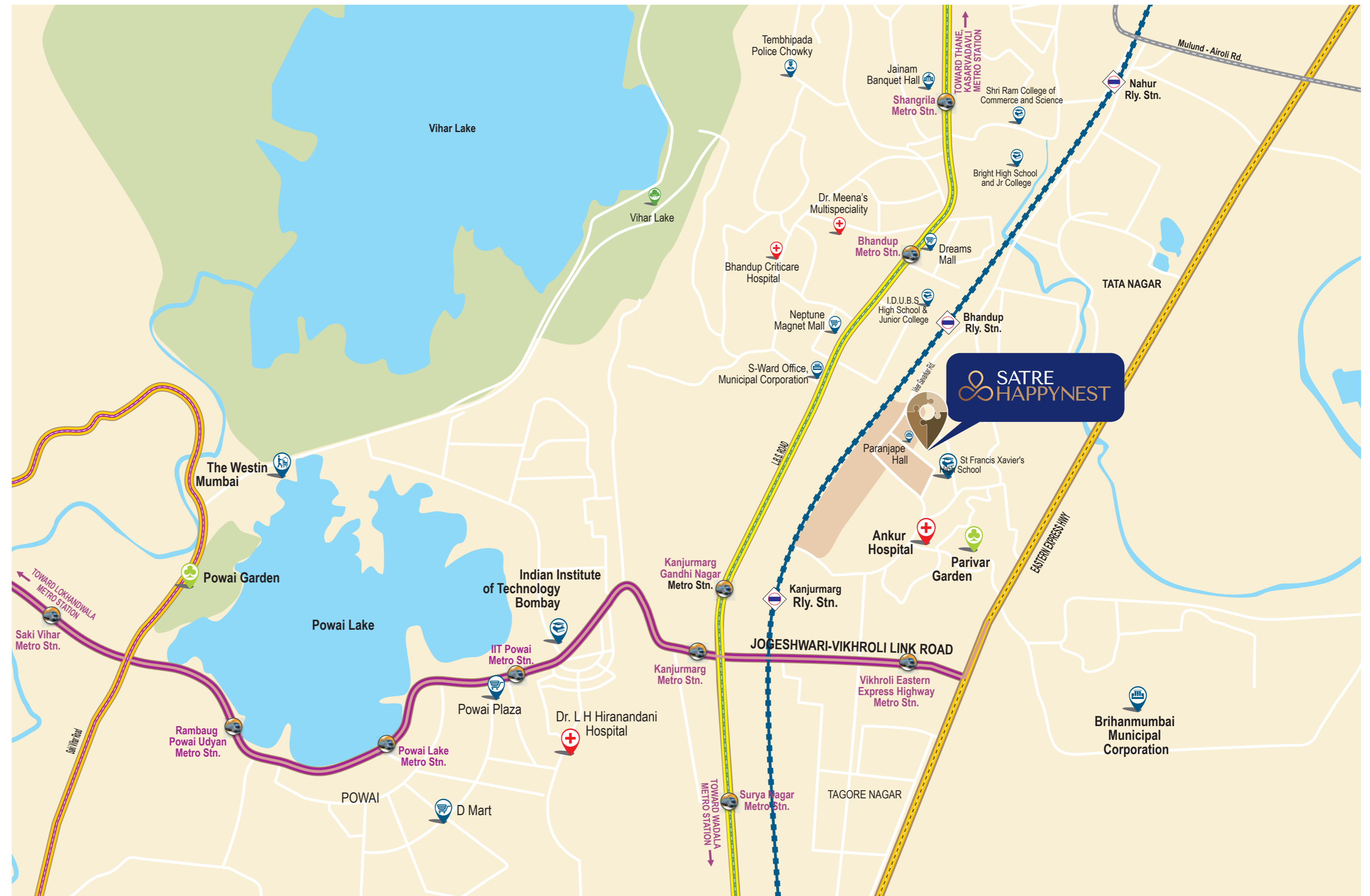
Hospitals

- Fortis Hospital
- Hiranandani Hospital



Business Hubs

- Lodha Supremus
- Embassy 247
- VNS Business Hub
- Godrej
- Kailash Business Park
- Powai Hiranandani
- Seepz
- BKC
- Thane
- Vashi
- South Mumbai



KANJURMARG, A LOCATION THAT FITS YOUR CONVENIENCE

The epicenter of Central Mumbai offers the best of both worlds. It is situated amidst a peaceful vicinity but is still within striking distance of the best schools, colleges, hospitals, malls and multiplexes.



HOSPITALS & CLINICS



SCHOOLS & COLLEGES



SHOPPING MALLS & SUPERMARKETS



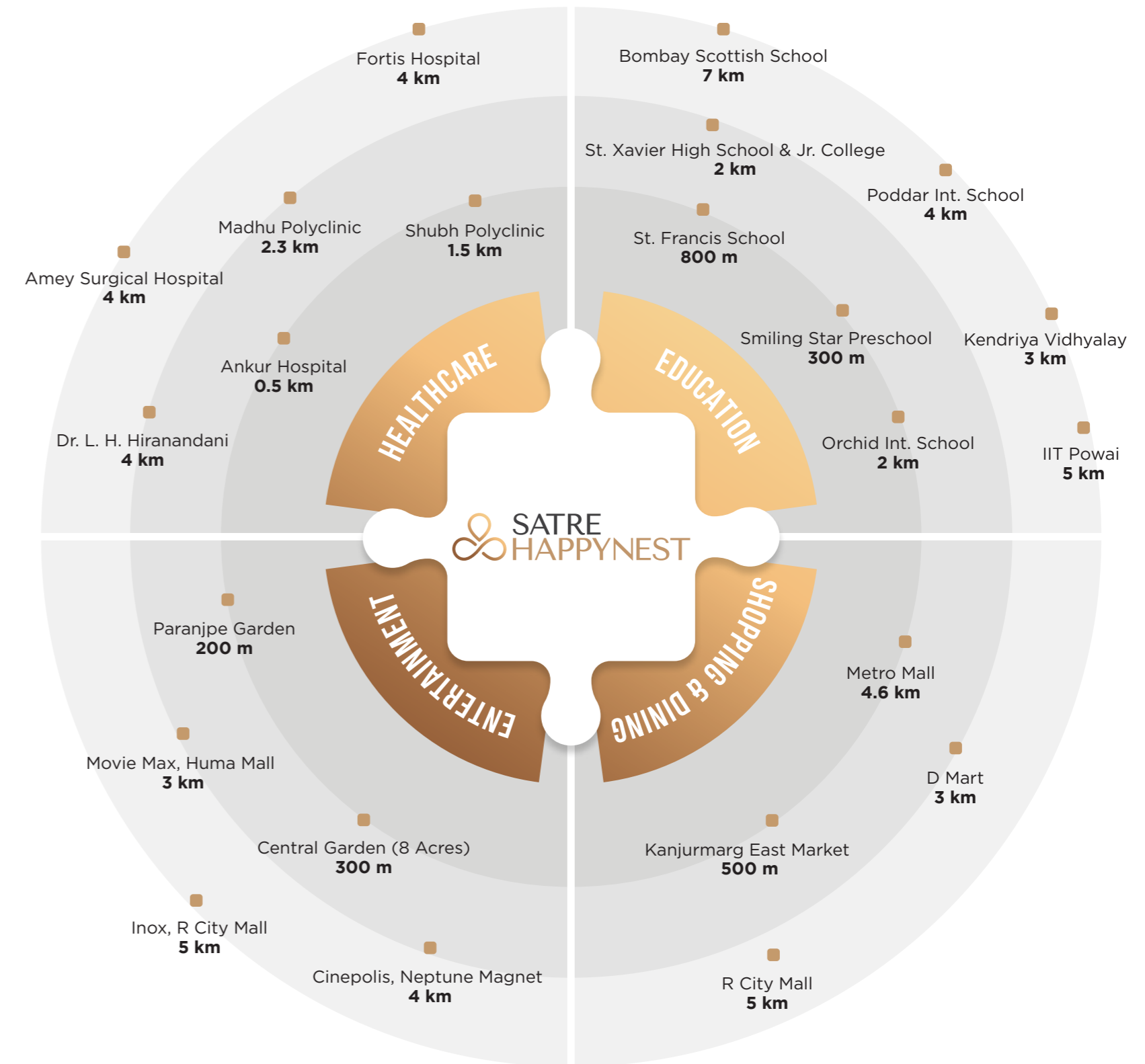
JAIN DERASAR & TEMPLES



FINE DINE RESTAURANTS



GARDENS



A RECREATIONAL SPACE THAT
**FITS WITH
QUALITY TIME**

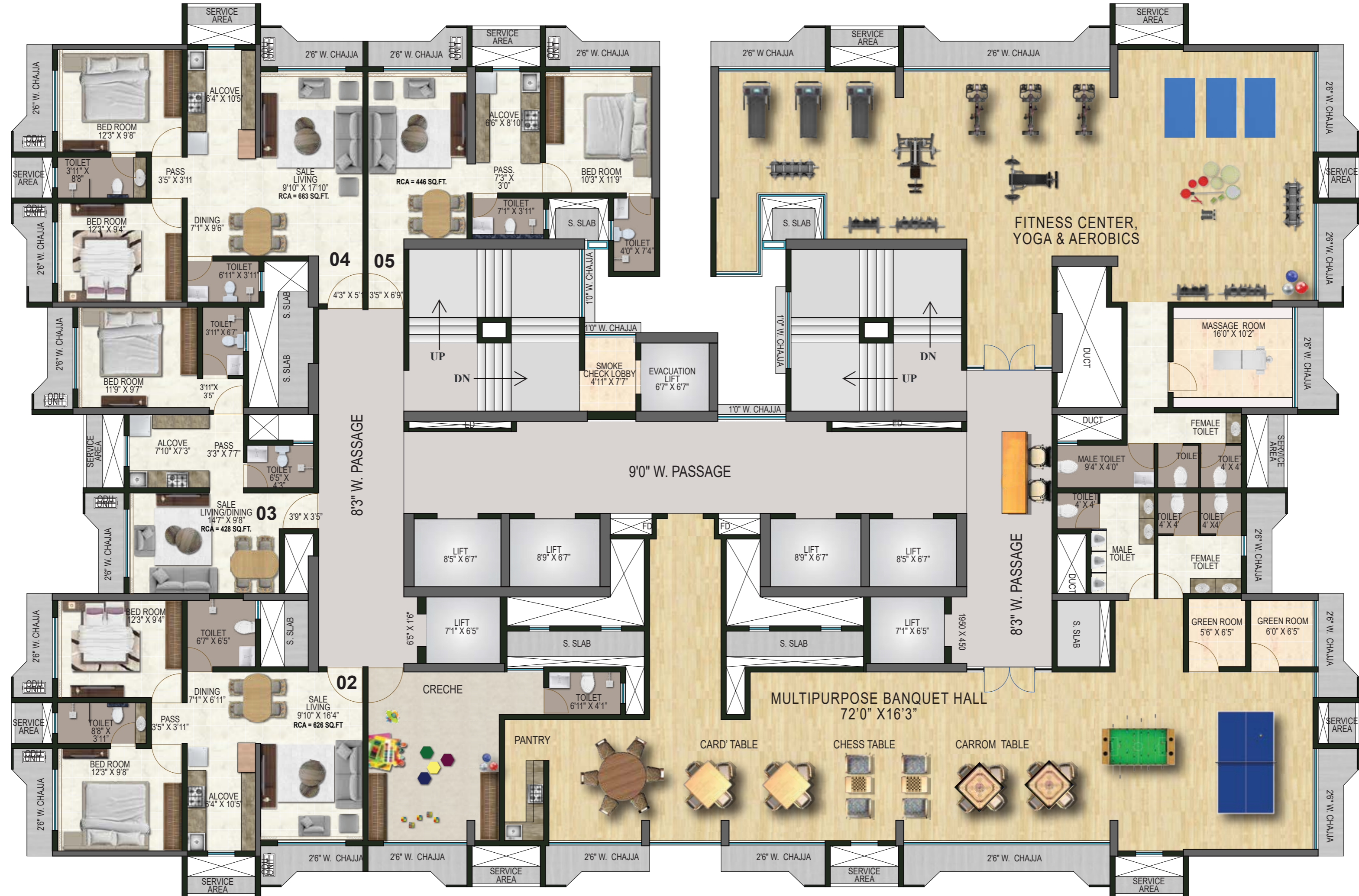
GAMES ARENA & FITNESS CENTRE
At 35th Floor





AMENITY FLOOR PLAN

35th Floor





Artist's Impression

IDENTIFY YOUR STRENGTHS

STATE-OF-THE-ART FITNESS CENTRE



Artist's Impression

CELEBRATE LIMITLESSLY

MULTIPURPOSE BANQUET HALL



Artist's Impression

BOOST YOUR SPORTSMANSHIP SPIRIT

INDOOR GAMES AREA



Artist's Impression

LET TODDLERS LEARN AMIDST FUN

CHILDREN'S CRÈCHE



AN EXPERIENCE THAT
**FITS AMONG
THE CLOUDS**

PREMIUM ROOFTOP
LIFESTYLE AMENITIES



RISING HIGH WITH VIBRANT MOMENTS

- 1 ROOFTOP POOL
- 2 KID'S POOL
- 3 REFLEXOLOGY PATH
- 4 ROOFTOP JOGGING TRACK
- 5 MULTIPURPOSE TURF
- 6 STARGAZING DECK
- 7 NANA NANI PARK
- 8 CHILDREN'S PLAY AREA



Artist's Impression

HORIZON OF CALMNESS

ROOFTOP POOL



LET KIDS DIVE INTO EXCITEMENT

KID'S POOL



RISE ABOVE & RUN BEYOND LIMIT

ROOFTOP JOGGING TRACK



REVIVE YOUR SENSES

REFLEXOLOGY PATHWAY



IGNITE YOUR SPORTING SPIRIT

MULTIPURPOSE TURF



REACH FOR THE STARS

STARGAZING DECK



EXPERIENCE MOMENTS OF BLISS

NANA NANI PARK

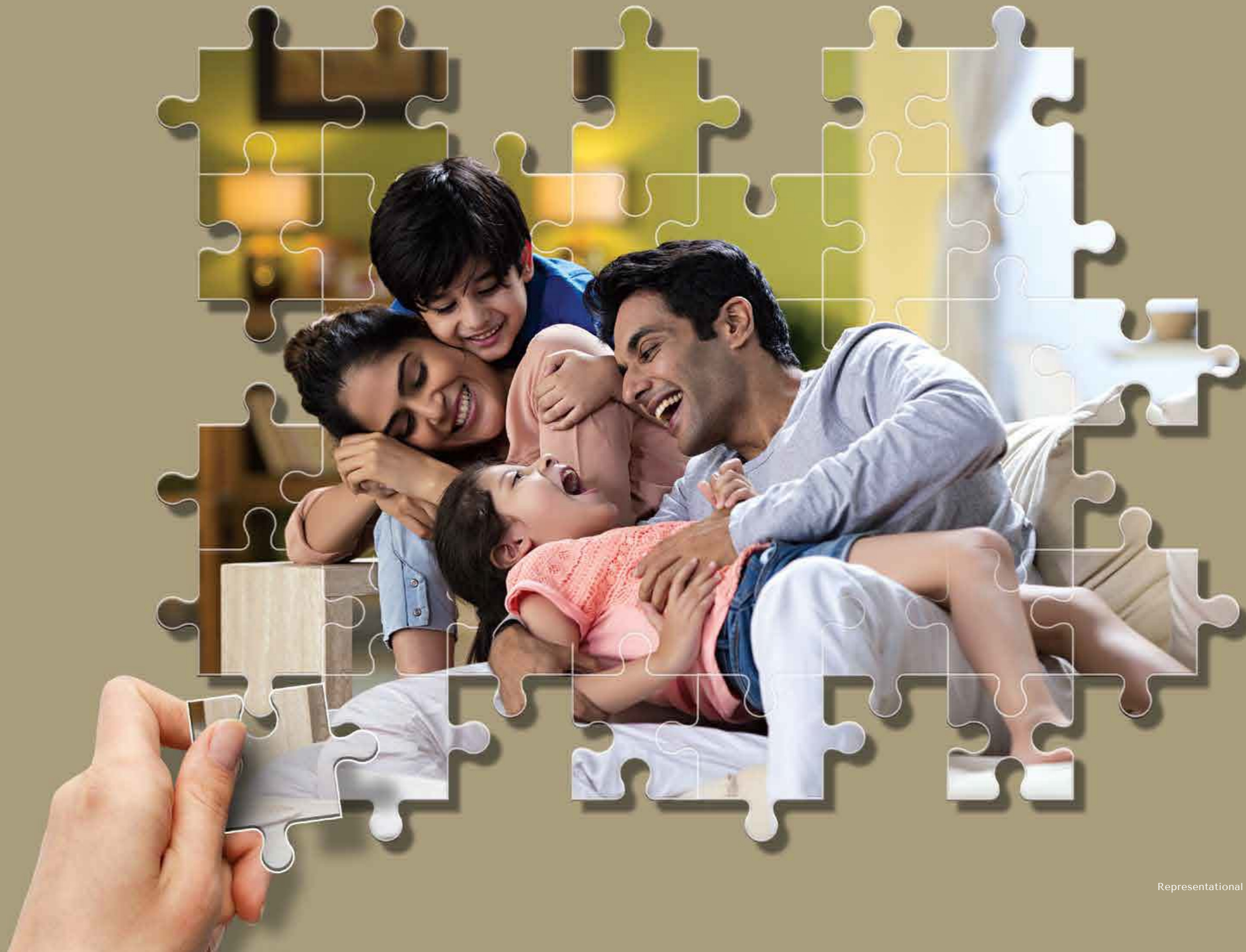


WHERE LEARNING BECOMES AN ADVENTURE

CHILDREN'S PLAY AREA

A HOME THAT
**FITS YOUR
COMFORT**

APARTMENT & TOWER FEATURES





Artist's Impression

IMPRESSIVE CRAFT OF AWESOMENESS

GRAND ENTRANCE LOBBY



DISCOVER COMFORT AND PEACE

SMART-SIZED LIVING AND DINING ROOM



DESIGNED TO INSPIRE A SENSE OF AWE

SPACIOUS BEDROOMS



Actual Photograph

A PLACE TO SATISFY YOUR HUNGER

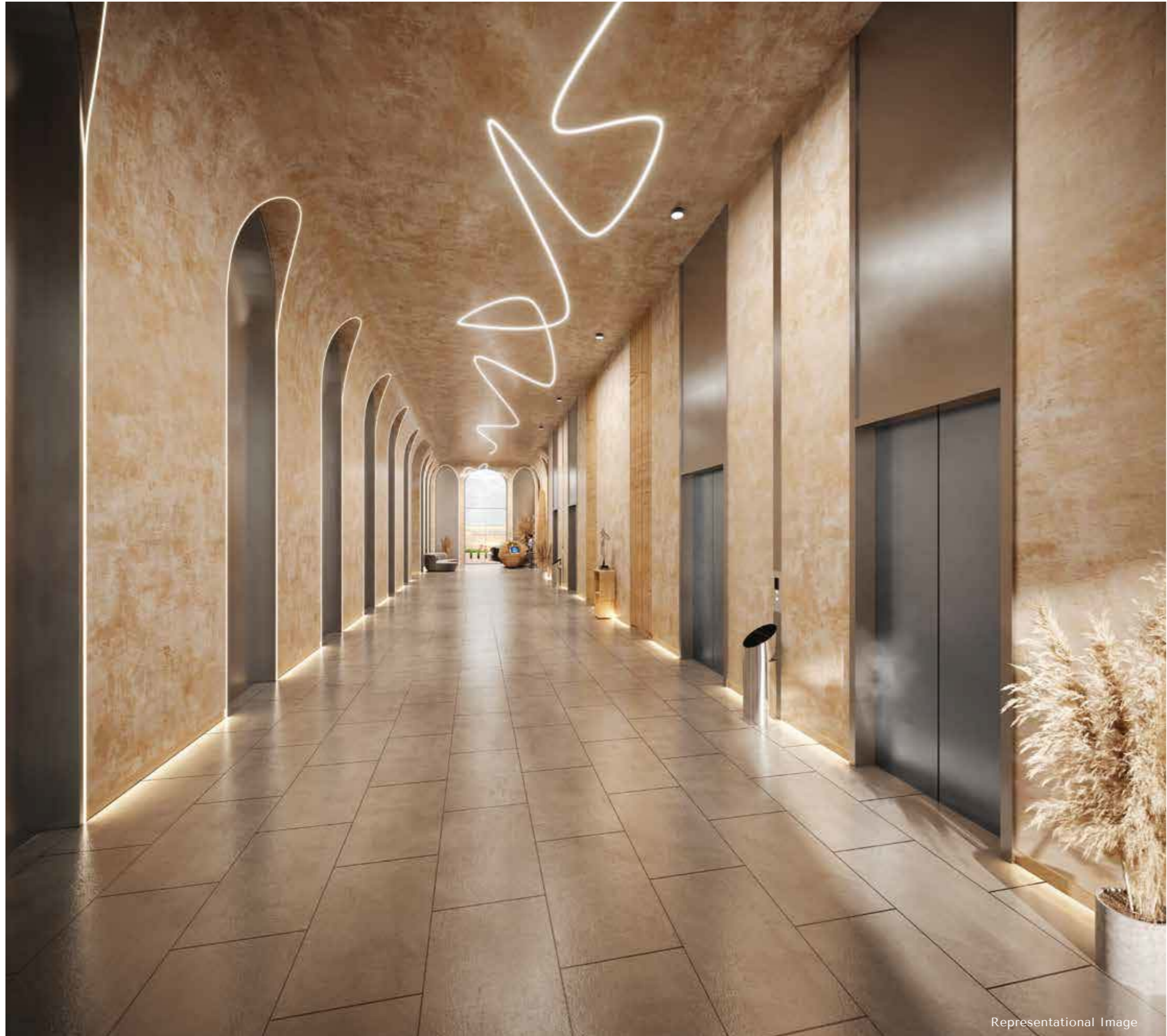
WELL-PLANNED KITCHEN



Actual Photograph

REMARKABLY ELEGANT

EXQUISITE RESTROOMS



Representational Image

ELEVATE YOURSELF SWIFTLY

COMMON LOBBY WITH HIGH SPEED ELEVATORS



Representational Image

A HOME FOR YOUR WHEELS TOO!

DEDICATED CAR PARKING SPACE



Representational Image

SAFETY IS THE REAL PRIORITY

ADVANCED SECURITY WITH CCTV SURVEILLANCE

PROJECT AT A GLANCE

PROJECT HIGHLIGHTS

- 35 Storeyed Tower
- Smart-Sized Homes 420 Sq. Ft. Onwards
- Lavish Indulgences at Sky Level
- Fitness Centre on 35th Floor
- Centrally Located at Kanjurmarg (E)
- 24x7 CCTV Surveillance

35TH FLOOR AMENITIES

- State-Of-The-Art Fitness Centre
- Multipurpose Banquet Hall
- Indoor Games Area
- Children's Crèche

SKY LEVEL FEATURES

- Rooftop Pool
- Kid's Pool
- Reflexology Path
- Elevated Jogging Track
- Cricket Turf with Bowling Machine
- Star Gazing Deck
- Nana Nani Park
- Children's Play Area

APARTMENT FEATURES

- Grand Entrance Lobby
- Vastu Compliant Homes
- Smart-Sized Living and Dining Room
- Spacious Bedrooms
- Well Planned Kitchen
- Exquisite Restrooms
- Video Door Phone

TOWER FEATURES

- Common Lobby with High Speed Elevators
- Dedicated Car Parking Space
- Efficient Fire Fighting System
- Advanced Security and CCTV surveillance

INTERNAL FEATURES

- Vitrified Flooring Tiles
- Anodized/Powder Coated Aluminium Sliding Windows with Tinted Glass and Marble Sill
- Attractive Main Door with Wooden Door Frame, Elegant Handle and Lock
- Modular Switches with Points for TV, Telephone, Internet, AC, Water Purifier, Mixer, Fridge, Microwave and Geyser
- Granite Platform with Stainless Steel Sink for Kitchen
- Water Resistant Flush Doors for Toilet
- Sanitary Fittings of Reputed Make
- UPVC Concealed Piping for Toilets
- Gypsum Birla Putty with Plaster Walls with Oil Based Distemper Paints
- Concealed Copper Wiring with Isolator / MCB of Reputed Make

EXTERNAL FEATURES

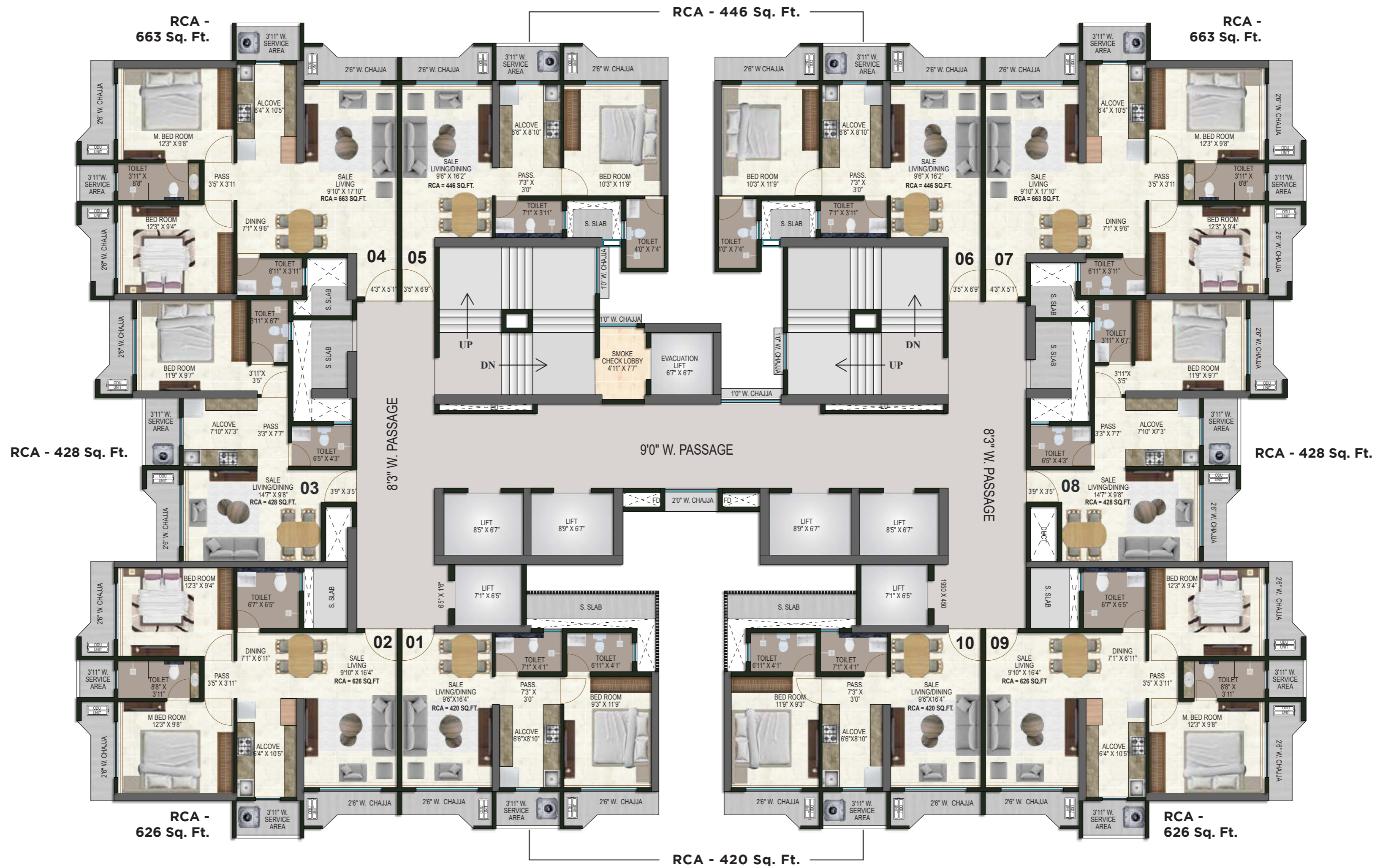
- Earthquake Resistant RCC Frame Structure



Artist's Impression

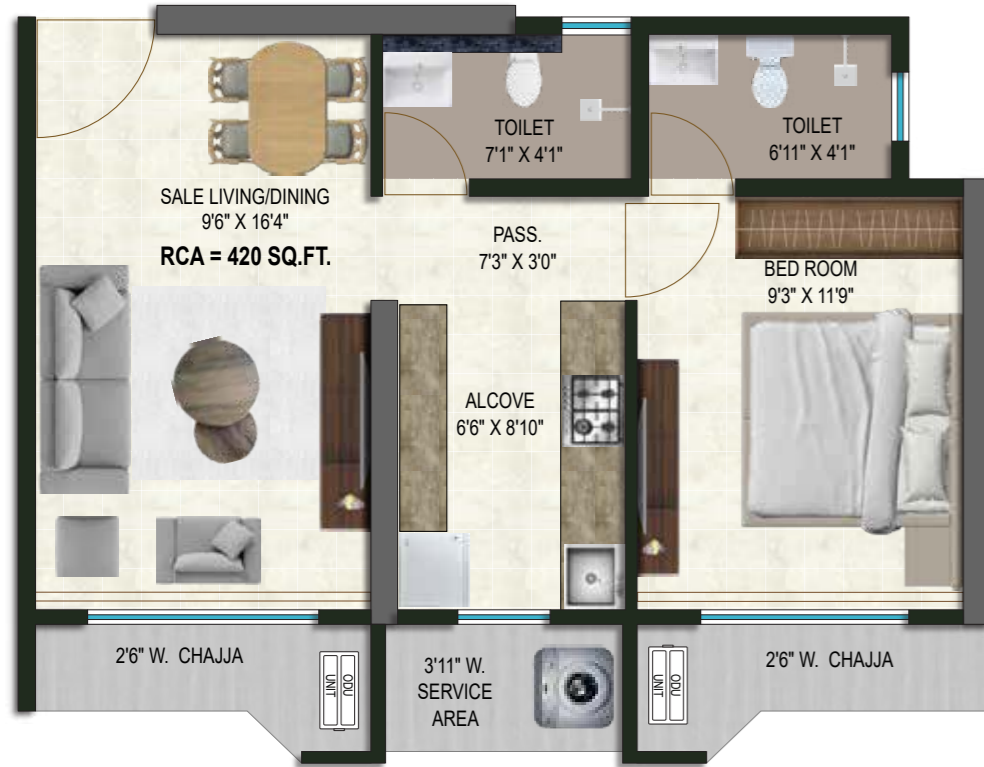


TYPICAL FLOOR PLAN





1 BHK - TYPE 1
FLAT NO. 01 & 10
RCA - 420 Sq. Ft.



1 BHK - TYPE 2
FLAT NO. 03 & 08
RCA - 428 Sq. Ft.



2 BHK - TYPE 1
FLAT NO. 02 & 09
RCA - 626 Sq. Ft.



2 BHK - TYPE 2
FLAT NO. 04 & 06
RCA - 663 Sq. Ft.



1 BHK - TYPE 3
FLAT NO. 05 & 06
RCA - 446 Sq. Ft.



3.5 BHK - JODI FLAT
FLAT NO. 04+05 & 06+07
RCA - 1109 Sq. Ft.





Representational Image



SATRE | A BETTER
TOMORROW

For the past decade and a half, we have been following the values of an ideal farming family with close ties to the soil. The graph of our construction business, standing on the three pillars of integrity, honesty and achievement, is now rising day by day.

Today, the name Satre is taken with utmost trust in the city of Mumbai. We believe that the creation of a dedicated construction area of over 1 million square feet is a testament to our success. The name of Satre is confidently associated with residential projects, commercial construction, redevelopment projects and MHADA projects.

With the best quality of construction, transparent business attitude and passion for innovation, we are building a new dimension and transforming Mumbai for a bright tomorrow.