



**SUN PROJECTS INDIA PVT. LTD**  
Builders & Developers  
An ISO 2015 Certified Company

T.C. 4/1044, "Sreebhas", Kowdiar, Trivandrum 695003.  
Phone: +91 471 2539933, 2432747, UAE: 050 777 3274  
Email: mail@sunprojectsindia.com www.sunprojectsindia.com



Get **more** from life




RERA Regn: K-RERA/PRJ/297/2020



## LOCATION MAP



 993 069 9699

## SPECIFICATIONS

- STRUCTURE : RCC framed structure on pile foundation.
- FLOORING : Elegant vitrified tile flooring for the entire apartment except toilets. Ceramic tiles for toilets.
- DOORS : Decorative hardwood entrance door, flush - doors for bedrooms and kitchen, flush - door with water resistant coating inside for toilet doors.
- KITCHEN : Counter top with black granite top and stainless steel zinc, ceramic tiles above the counter to the height of 45 cm, single-bowl zinc with black granite top in work area.
- WINDOWS : UPVC with glazed sliding shutters and safety grills .
- TOILETS : Ceramic tiles for floors and dadoing up to door height , concealed piping white sanitary fitting (RAK /TOTO OR Equivalent ) &CP fittings (Grohe OR Equivalent) provision for geyser connection in bathrooms except servant- toilets.
- PAINTING FINISH : Putty and OBD finish for all internal walls, Enamel paint for steel work for interior doors, 2-coat exterior paint for outside walls.
- ELECTRICALS : Concealed conduit wiring with copper conductor, adequate lights, fan and plug-points controlled by ELCB & MCB with independent KSEB meters.
- TELEPHONE : Concealed wiring for telephone in living and master bedroom.
- CABLE TV : Provision for cable TV connection in living room.
- POWER BACK-UP : For Lift, Water Pump, Common area lighting, Lights, Fans, TV and Telephone charging points in apartments.

## COMMON FACILITIES

- Decorative Lobby
- Provision for Health Club
- Provision for Multi purpose Hall
- Wi-Fi Internet Connection
- Roof Top Party Area
- One Passenger lift & One bed lift
- Reticulated gas supply in all apartments
- Intercom
- Solid Waste Management
- Sewage treatment plant
- Caretaker's and driver's rest rooms
- Children's Play Area

## HIGHLIGHTS OF THE PROJECT

- In the heart of the city
- 24 hour generator back up
- Provision for 24 hour security
- 2 Automatic Lifts
- High-end specifications
- 2 floor covered car parking
- Individual letter -box & Name board

**SUN**  
**CORNER STONE**



# more than you expected

Presenting Sun Cornerstone. A set of 38 aesthetically designed 2 and 3 bedroom apartments at Pettah, one of the most sought-after neighbourhoods in the city. Here, you will experience more ways to celebrate life. More connectivity. More opportunities. More joyful moments. More peace of mind.

It's time to enjoy more.



Call: Home Care Division 24 x 7

**97 45000156**

One of our special features is the service to non-resident customer. Even when you are not occupying the homes, we help you to rent out your homes to prospective tenants, undertakes tax remittance and payment of telephone bills and electricity bills. Our property management team helps to advertise, select the tenants and report to owners. To ensure your home and its premises are kept clean and healthy, we arrange its occasional cleaning to render a dazzling look to your home. We assist in giving expert advice for the best interiors, wardrobes, cabinets, customised furniture, designer kitchens, cupboards, and carpets. This is highly beneficial for NRIs and an ideal investment opportunity.

We cement our relationship with our customers with an everlasting bond. A bond that is testified by the post-completion services we offer. Our home care department sets you free of all your hassles even in your absence.

Home Care  
Because we care

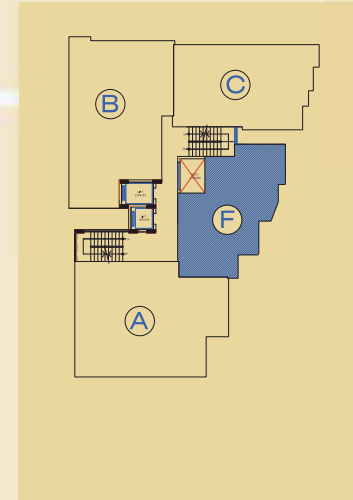




**Type-F Three Bedroom Apartment -1600 SQ.FT**

Disclaimer: Dimensions may vary during construction. Furniture and fixtures are indicative only.

**Key Plan**



**more trust**

Sun Cornerstone is one more outstanding project from Sun Projects, a leading builder in Kerala. A trusted name today, thanks to its reputation for giving more to customers, whether it's quality, transparency, timely delivery, or after sales support.

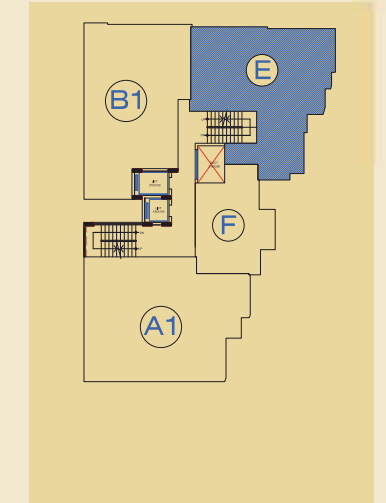
- ISO 9001-2015 company
- Unblemished track record spanning 14 years
- Successfully built over 5 million sq. ft. of residential and commercial space
- Over 700 happy homeowners
- Dedicated Homecare and Interior Divisions



**Type-E Three Bedroom Apartment -1300 sq.FT**

Disclaimer: Dimensions may vary during construction. Furniture and fixtures are indicative only.

**Key Plan**

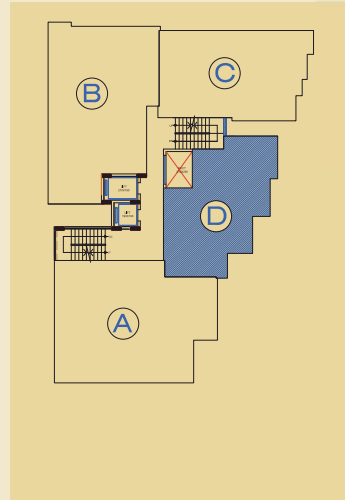




**Type-D Two Bedroom Apartment -1160 SQ.FT**

Disclaimer: Dimensions may vary during construction. Furniture and fixtures are indicative only.

**Key Plan**



**more perks**

These are homes where you get more.

**More** comfort. **More** new-age facilities. **More** luxury. **More** room for your family. **More** attention to detail. **More** value-for-money. **More** safety. In essence, **More** happiness.

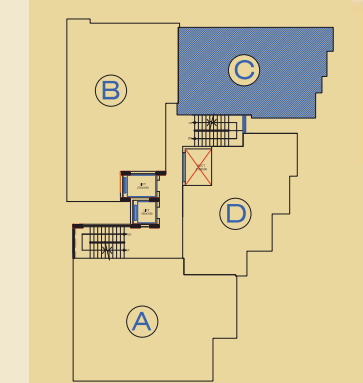
- Grand lobby • Biometric entry system • Health club • Intercom facility • Rooftop party area • Indoor games room • Caretaker's room • Provision for WiFi • Reticulated gas supply • One bed lift and one passenger lift • Solid waste management • Gym • STP
- Provision for 24 hrs security • Common area



**Type-C Two Bedroom Apartment -1143 sq.FT**

Disclaimer: Dimensions may vary during construction. Furniture and fixtures are indicative only.

**Key Plan**



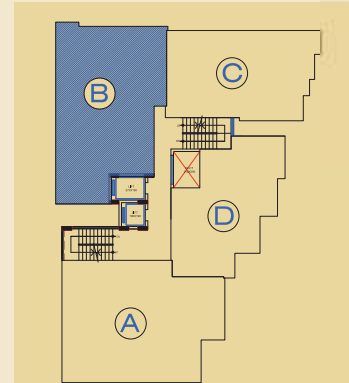




### Type-B Three Bedroom Apartment -1483 SQ.FT

Disclaimer: Dimensions may vary during construction. Furniture and fixtures are indicative only.

#### Key Plan



## more accessibility

Sun Cornerstone is coming up at one of the most prominent locations in the city.

Here, you can spend more time with your loved ones, instead of spending it in commute or traffic. All conveniences are close by. Discover more top-notch shopping hubs, more hospitals, more educational institutions in the vicinity than anywhere else.

Need more reasons to choose Cornerstone?

- Close to international & domestic airport, and railway stations
- Close to major hospitals, including Medical College, KIMS, among others
- Close to malls like Mall of Travancore and upcoming Lulu Mall.



**Typical Floor Plan**



**Type-A Three Bedroom Apartment -1530 SQ.FT**

Disclaimer: Dimensions may vary during construction. Furniture and fixtures are indicative only.

**Key Plan**

