



SAMPADA LIVIA

Blooming Lifestyle



Fine Living Rejuvenating Tomorrow



USP of Project

1. Construction of Project by Association of Allottees
2. Direct Monitoring of Project by UP RERA
3. First Rehabilitation project in India
4. No Builder involved
5. Buyers have full control over the project
6. Centralised Location
 - Jewar International Airport - 20 min. Drive
 - Pari Chowk Knowledge Park Metro Station - 5 min Drive
 - Institutional Area, Knowledge Park 5 min Drive
 - Expo Mart - 6 min Drive
 - Hospital - 6 min Drive
 - Delhi 20 min. Drive
 - Film City (New) - 15 min Drive
 - Upcoming Bullet Train Station - 8 min
 - Noida - 5 min
 - Five Star Hotel Radisson Blue - 5 min

7. Club and Market facility available in the Complex only



Legend's Features

Gated Society	Parking	Drop Off Point	Party Lawn	Club	Rain Water Harvesting P.T.S.	Gymnasium
Swimming Pool	Badminton Court	Jogger's Track	Kid's Playing Area	Commercial	Jacuzzi	Spa & Sauna

A Landmark Blooming with Exemplary Craftsmanship

Club Features:

- Personal Care Sauna, Steam, Jacuzzi & Spa
- Air-Conditioned Salon / Beauty Parlour
- Air-Conditioned Gym with modern equipment and music system
- Swimming Pool with Kids Pool

Apartment Features:

- Designer Flooring
- Two High Speed Lifts for Three Flats

Campus Features:

- Water Softening Plant with 24 Hour Back Up Supply
- DG Power Back up
- Sewage Treatment Plan
- Rain Water Harvesting Pits
- 50% Green Area
- Jogging Track, Party Lawn, Badminton Court & Basket Ball Court

Security Features:

- 3 Tier Security
- Provision for CCTV & Intercom
- Provision for Remote Viewing through interne

Future of Jewar

- Metro from Jewar to Pari Chowk, further connected to different parts of Delhi NCR.
- Rapid Rail Transport System (Connecting Agra to Jewar)
- Elevated Road from Jewar Airport to IGI Airport.
- Defence Corridor in 300 Acre.
- Sports Zone for Olympics.
- Connecting Yamuna Expressway, KMP and FNG Expressway.
- Manufacturing Hub for Adani and Reliance Industries.
- Institutional Zone in 500 Acre.
- Film City in 300 Acre.
- Telecom and Mobile Hub (Vivo and Oppo)
- Patanjali Food Park in 100 Acre.
- Asia largest Amusement Park.
- Night Safari
- F1 Track
- Noida International Cricket Stadium
- Pollution Free Zone.



Location Advantage



Jewar International Airport



Proposed ISBT



International Cricket Stadium



Noida Film City



Connaught Place Market



Delhi-Mumbai International Corridor



Eastern Peripheral Expressway



Frieght Corridor By Indian Railway



Proposed Mono Rail



World Class Universities



Hospital

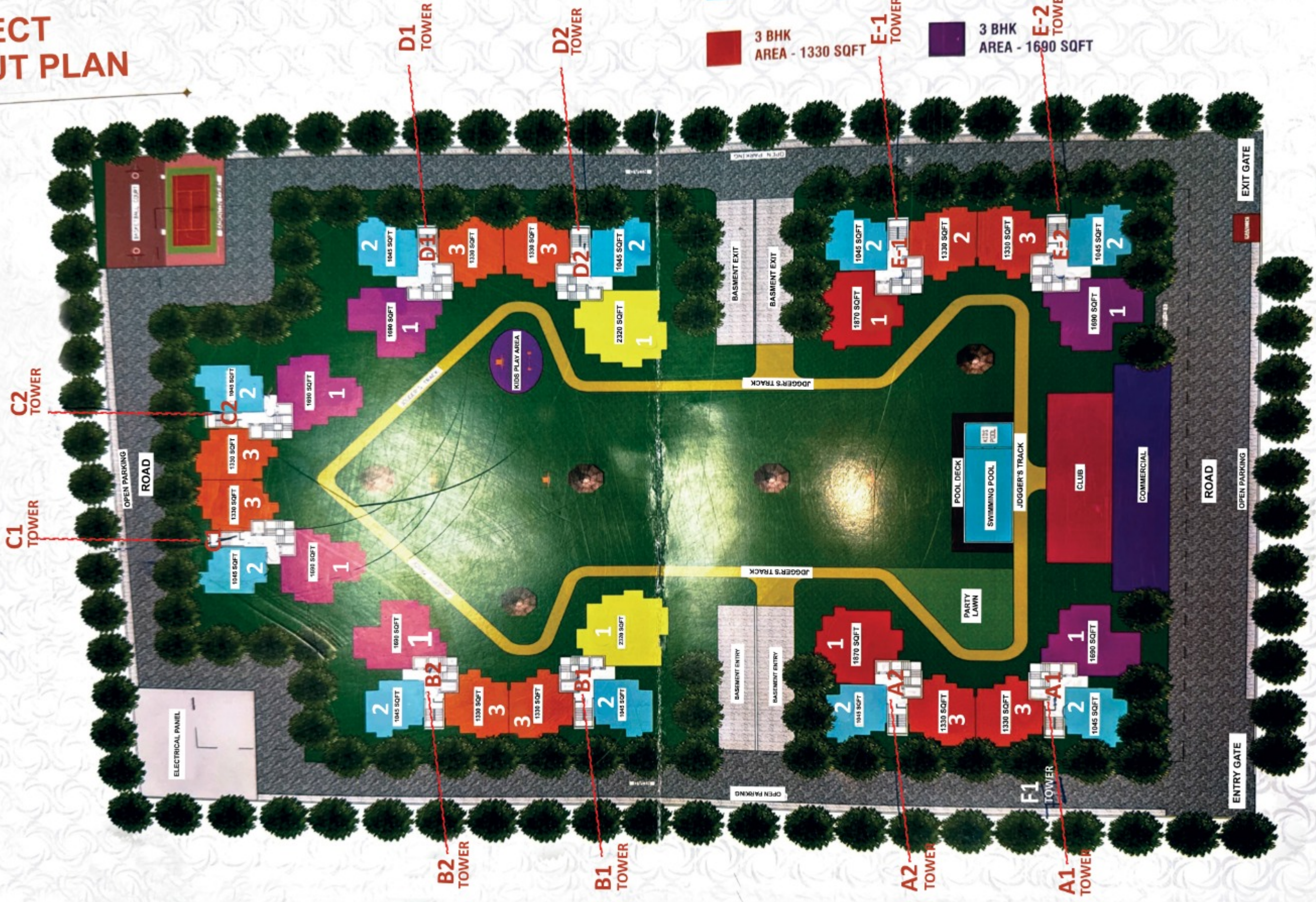


Tech Zone

PROJECT LAYOUT PLAN

LAND LAYOUT PLAN & LOCATION PLAN

- 2 BHK AREA - 1045 SQFT
- 3 BHK AREA - 1330 SQFT
- 3 BHK AREA - 1870 SQFT
- 3 BHK AREA - 1690 SQFT
- 4 BRK AREA - 2320 SQFT



Project Floor Plan

2 BHK SUPER AREA = 97.07 MTR - 1045 SQFT

BUILT-UP AREA= 73.31 MTR - 799.87 FT.

CARPET AREA= 60.08 MTR - 646.70 FT.

2 BED+KITCHEN+DRAWING+DINING

+ 2 TOILETS + 3 BALCONIES



Project Floor Plan

3 BHK SUPER AREA= 123.54 MTR. - 1330 SQFT

BUILT-UP AREA: 92.51 MTR - 995.78 FT.

3 BED+KITCHEN+DRAWING+DINING

CARPET AREA = 74.97 MTR - 806.65 FT.

+2 TOILETS+4 BALCONIES



Project Floor Plan

3 BHK SUPER AREA = 156.99 MTR - 1690 SQFT

BUILT-UP AREA = 120.86 MTR - 1300.94 FT.
 CARPET AREA = 92.37 MTR - 994.27 FT
 3 BED+KITCHEN+DRAWING+DINING
 +3 TOILETS+3 BALCONIES



Project Floor Plan

3 BHK SUPER AREA= 173.71 - 1870 SQFT

BUILT-UP AREA: 133.11 MTR - 1432.80 FT.

CARPET AREA = 103.91 MTR - 1118.49 FT

3 BED+KITCHEN+DRAWING+DINING

+3 TOILETS+3 BALCONIES

+SERVANT ROOM WITH TOILET



Project Floor Plan

4 BHK SUPER AREA= 215.5 MTR - 2320 SQFT

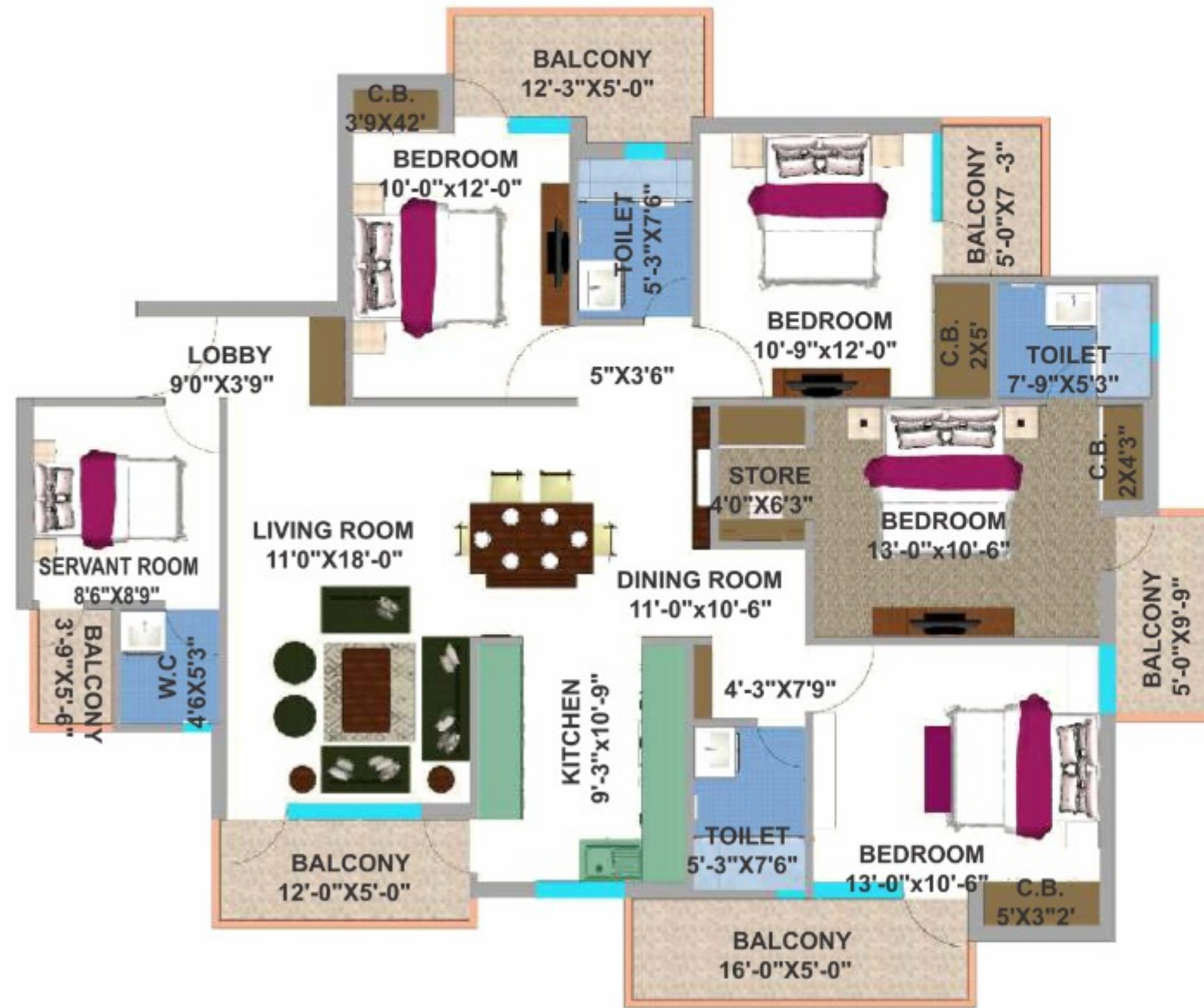
BUILT-UP AREA= 160.32 MTR - 1725.68FT

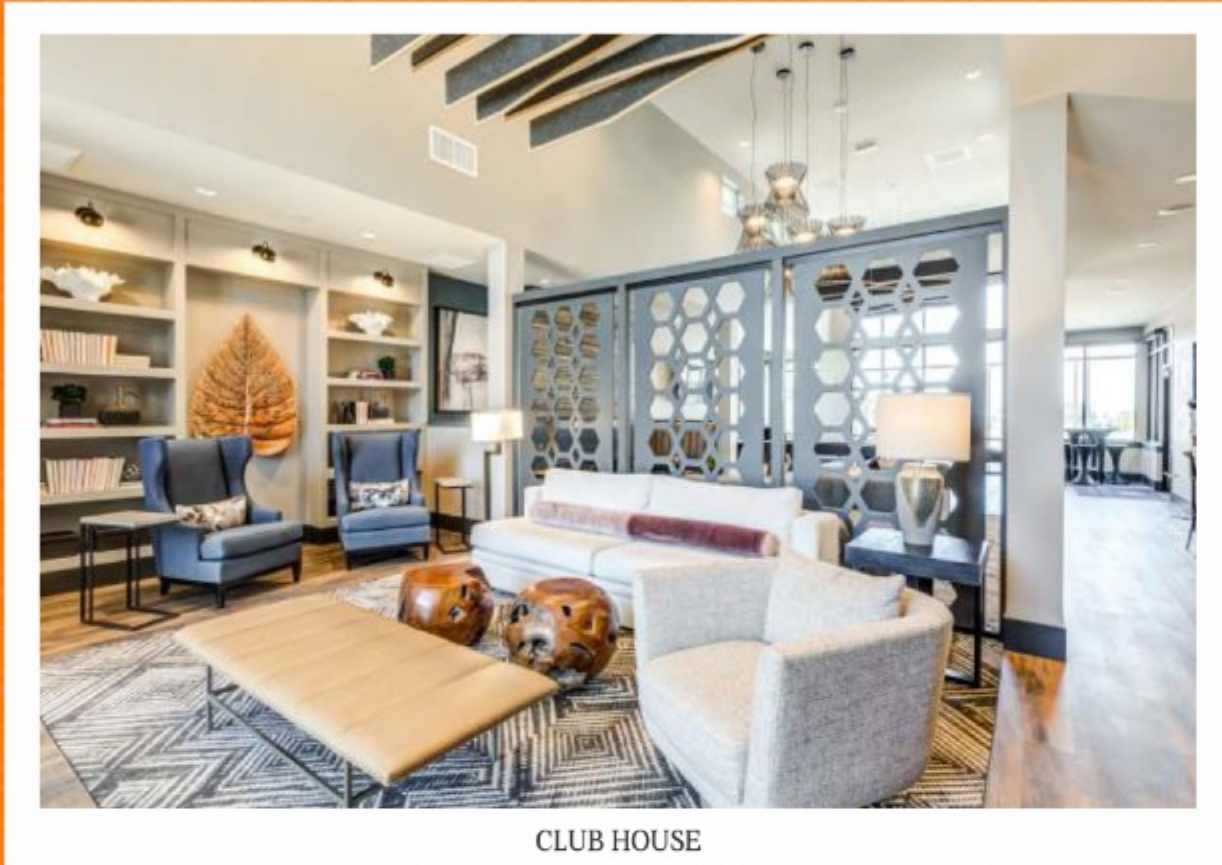
CARPET AREA= 126.71 MTR - 1363.91 FT

4 BED+KITCHEN+DRAWING+DINING

+3 TOILETS+5 BALCONIES

+SERVANT ROOM WITH TOILET AND BALCONY





Project Location Plan



AKSHITA INFRATECH PVT. LTD.
SLB WELFARE ASSOCIATION (REGD.)

GH-06B, Sector - CHI-V, Expressway, Greater Noida

CALL NO : +91- 9555180180 | E-mail: Sales@sampdalivia.com, info@sampdalivia.com

UP RERA No.: UPRERAPRJ5855