



CHOPADA VENTURES  
PROMOTERS & DEVELOPERS



37  
**GRANDSTAND**  
PANCARD CLUB ROAD, BANER

---

4 & 3 BED BESPOKE RESIDENCES

LIFE BEYOND GRANDEUR

37  
GRANDSTAND  
PANCARD CLUB ROAD, BANER



Artistic Impression



Artistic Impression

ENTRANCE SO GRAND,  
BECOMING A WAY OF LIFE.



Artistic Impression

# CONTEMPORARY LIVING REDEFINED

DISCOVER SPACIOUS 4 & 3-BEDROOM RESIDENCES WITHIN THIS ARCHITECTURAL MASTERPIECE.

At 37 Grand Stand, we've designed a modern skyscraper that seamlessly blends into the skyline of Baner. Our architecture speaks of innovation and sophistication, redefining contemporary living without the need for excessive adjectives. The tower's elevation stands as a symbol of sleek, thoughtful design that captures the essence of modern living.



Artistic Impression

# EXPERIENCE UNMATCHED COMFORT

At 37 Grand Stand, we've curated **20+ LIFESTYLE AMENITIES** to enrich your daily life, ensuring your comfort and well-being. From fitness centers to serene green spaces, whether it's by the poolside, yoga studio, or spacious clubhouse, we offer diverse amenities for your convenience.



---

IMMERSE IN THE INFINITE AT 200 FEET  
ABOVE THE HORIZON

---

# ELEVATE BEYOND HORIZON

WHERE SOPHISTICATION AND GRANDEUR  
REUNITE



Artistic Impression

MULTIPURPOSE  
HALL

DEDICATED SENIOR  
CITIZENS SIT OUT AREA

CHILDREN'S PLAY  
GROUND AREA

FULLY AIR CONDITIONED  
INDOOR FITNESS CENTRE

INDOOR GAMING  
SECTION

LOUNGE  
AREA

SKY WALK GRACED  
WITH A WATER BODY

DEDICATED CO-WORKING  
SPACE

OUTDOOR  
GYMNASIUM

# INDOOR GAMES



Artistic Impression



# GYMNASIUM

Artistic Impression



RECREATIONAL  
AREA



YOGA DECK



# EXPERIENCE LIFE BEYOND IMAGINATION

- EXCEPTIONAL DEVELOPMENT IN A PRIME LOCALE
- STYLISH & CONTEMPORARY SKYSCRAPER
- GENEROUS OPEN SPACES
- PEACEFUL AND WELL-VENTILATED RESIDENCES
- OVER 20 LIFESTYLE AMENITIES



Artistic Impression

# EXQUISITE LIVING ROOM



## SPECIFICATIONS

### STRUCTURE

- Earthquake Resistant RCC Framed Structure

### FLOORING / DADO TILES

- 1600\*800 Italian Marble Finished Tiles in the Entire Apartment
- Optional Wooden Tile Flooring for Master Bedroom
- Bathroom Dado Tiles 600\*1200 up to Lintel Level
- Anti Skid Flooring Tiles in Bathroom
- Anti Skid Tiles for Dry Balcony / Terrace

### KITCHEN

- Engineered Quartz Platform in the Kitchen
- Stainless Steel Sink
- Provision for Water Purifier & Exhaust

### BATHROOM

- CP / Sanitary fittings from Toto, Grohe, American Standard or Equivalent
- False Ceilings in all the Bathrooms
- Wall Hung WC & Shower

### WINDOW

- Full Height Windows & Sliding Doors

### TECHNOLOGY

- Smart Home Automation
- Digitalised Door lock on the main door from Yale or Equivalent
- DTH & Optic Fibre Ready Homes

### ELECTRIFICATION

- Le Grand/Norisys or Equivalent electrical switches
- Provision for Inverter
- DB & MCB from Le Grand, Schneider or equivalent

### PAINT

- Internal:- OBD Paints
- External:- Textured/Acrylic/Apex

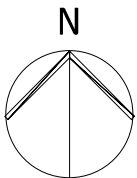
### SECURITY & SAFETY

- 3 Tier security system
- Video Door Phone
- CCTV in Entrance lobby, Amenities & common area
- Fire fighting systems

### ADDITIONAL SPECIFICATIONS

- Star lights in Balcony
- Power back up for common area & lift
- Glass Railings

# FLOOR PLAN



# TYPICAL UNIT PLANS

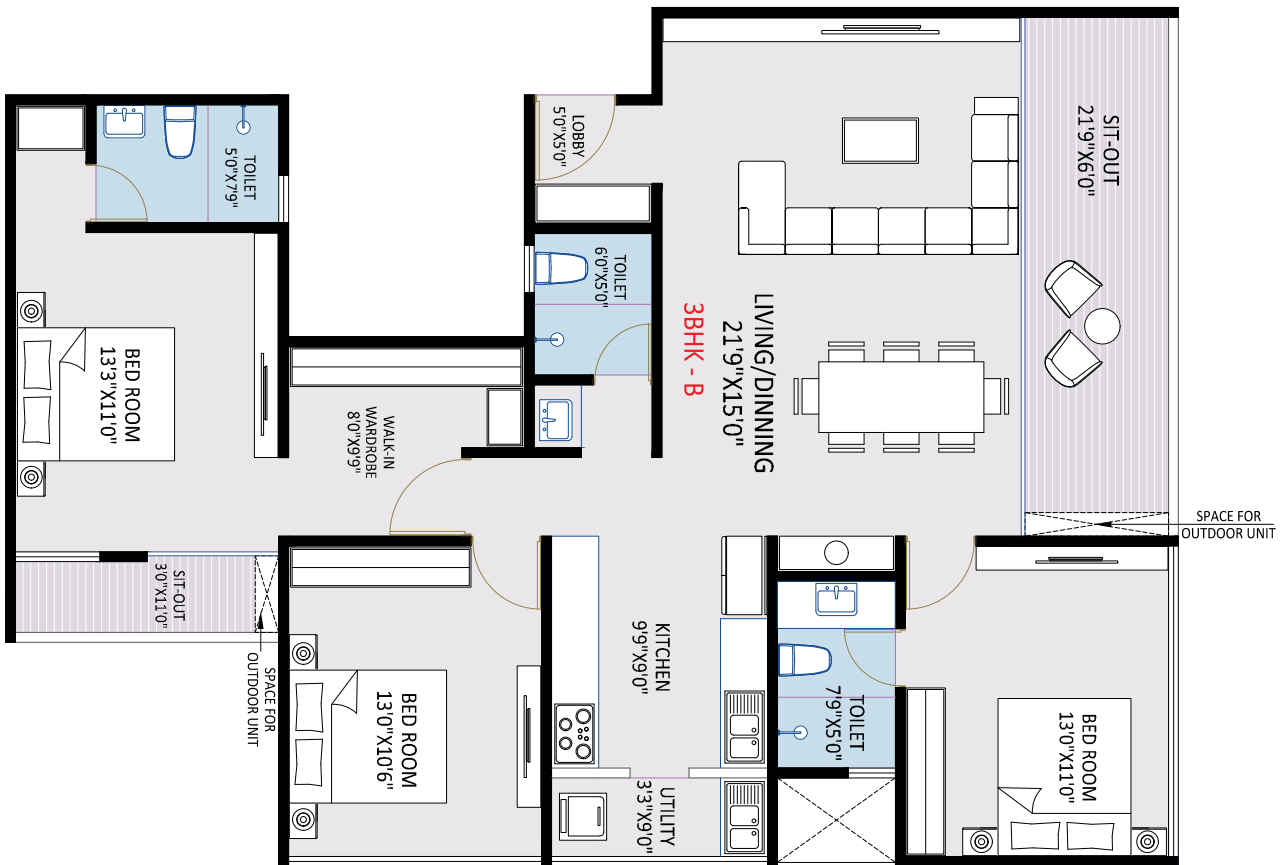
## 3 BHK - A Unit Plan

CARPET AREA - 1358 SQ. FT.

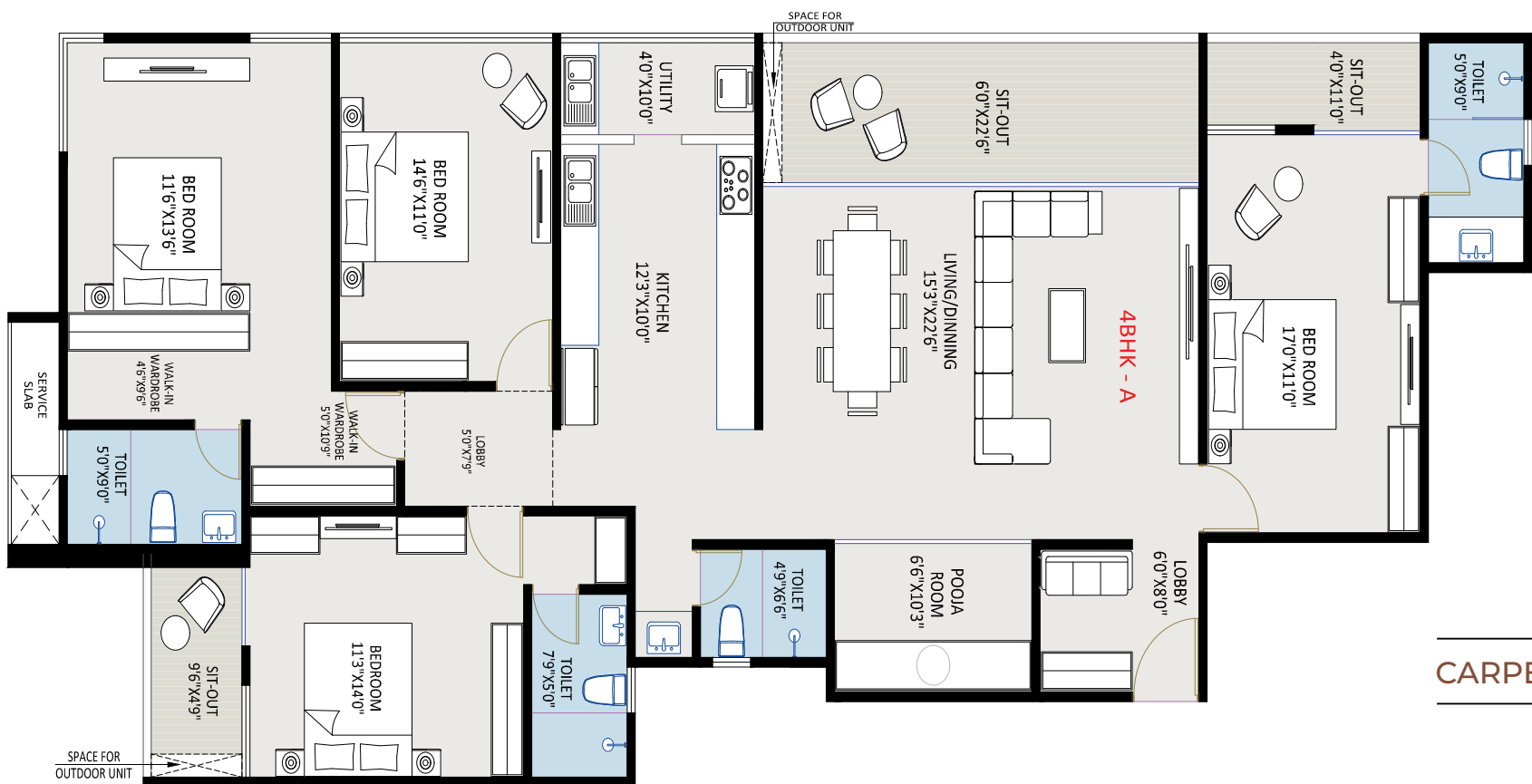


## 3 BHK - B Unit Plan

CARPET AREA - 1343 SQ. FT.



# TYPICAL UNIT PLANS



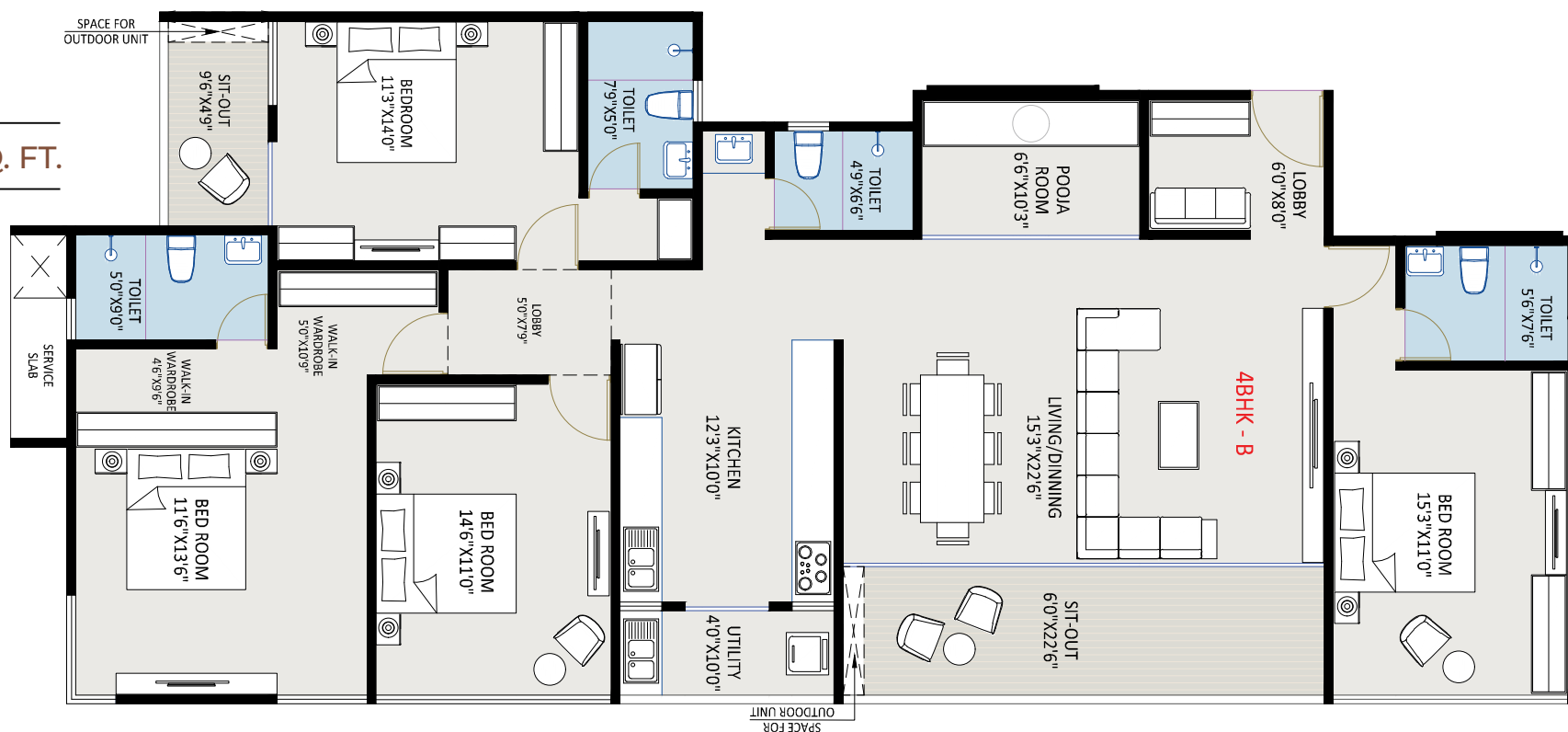
## 4 BHK - A Unit Plan

CARPET AREA - 1935 SQ. FT.



## 4 BHK - B Unit Plan

CARPET AREA - 1885 SQ. FT.



# MAP TO YOUR IDEAL LIFESTYLE



## ENRICHING LIVES SINCE 1995



SINCE ITS INCEPTION, SPACE BUILDERS HAS AIMED AT REDEFINING LUXURY ACROSS MID - SEGMENT HOUSING BY INVENTING, DISCOVERING & DELIVERING CONTEMPORARY LIFESTYLE SOLUTIONS.

DELIVERED  
**5 LAC + SQ.FT.**

ONGOING  
**7 LAC + SQ.FT.**

UPCOMING  
**10 LAC + SQ.FT.**

**37**  
**GRANDSTAND**  
PANCARD CLUB ROAD, BANER

Site Address : 37 GrandStand, Survey No. 37, Pancard Club Road, Near Golds Gym, Baner, Pune - 411045.  
[www.spacebuildersgroup.com](http://www.spacebuildersgroup.com) | [info@spacebuildersgroup.com](mailto:info@spacebuildersgroup.com) | [9422007805](tel:9422007805)  
 MahaRERA No. : P52100052752 <https://maharera.mahaonline.gov.in> | [f](#) [@](#) [in](#) [tv](#)

SCAN FOR RERA

