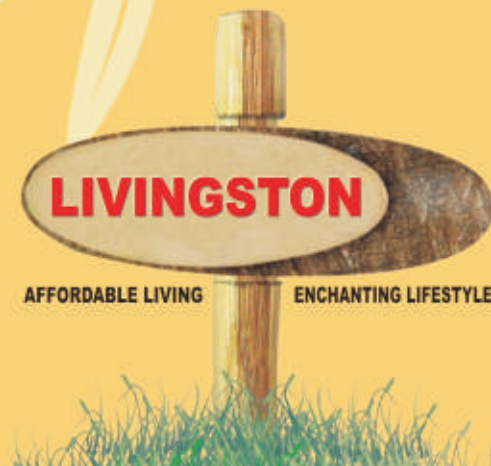


**Affordable housing in a global township.**





# brief



Supertech Livingston is set amidst beautiful lush greens to make you feel rejuvenated. This spectacular township is located in the heart of the country which offers 70% of open area within each plot. The open spaces at Livingston enthrall not just your mind, but also your spirit. The spaces have been designed keeping in mind your need for expansive spaces that capture your imagination. The township is a synonym for clutter free, pollution free, rejuvenating atmosphere that fosters harmonious co-existence with natural surroundings. Replete with facilities such as school, shopping mall, golf course etc, it is built with a view to provide you world-class amenities within close vicinity.

Livingston is being developed within the premises of India's first global city - Crossings Republik in Ghaziabad. This project is an amalgamation of 7 real estate companies including Supertech Group. All companies conceived together a global city which is culminated in the form Crossings Republik and within this global city Livingston is being developed by Supertech Group. Project location of Livingston which falls under territory of Ghaziabad is rapidly growing and featured in Newsweek International as the 10 top most dynamic cities of the world during the year 2006. It is on its way to becoming one of the most advanced and top class cities in the world and stands as the perfect investment and housing destination.

Livingston is a part of integrated township spread across 360 acres. It is committed to provide you a luxurious lifestyle in your dream home within this township. Replete with all facilities one can possibly think of, such as ultra modern apartments, golf course, clubs, swimming pool, shopping malls, daily needs stores, hospitals and a gymnasium. You shall be greeted with an absolutely blissful environment devoid of chaos and pollution, where lush greens and wide open spaces await you. You feel like you are in a world so different and pure. Located within close vicinity to Noida, Greater Noida, New Delhi, Airport, Railway Station a developing Metro line, this is the place you want to spend the life that you deserve.

A stylized, light yellow illustration of an olive branch with several leaves and two olives, set against a solid yellow background. The branch curves from the bottom left towards the top right, framing a central white box.

**India's first global city**  
**Luxurious lifestyle**  
**Beautiful lush greens**  
**Rejuvenating atmosphere**  
**Ultra modern apartments**  
**Golf course**



# AREA MAP



- 1 AMPHETHEATRE
- 2 FUNCTIONAL GREEN AREA WITH PALM AVENUE
- 3 DECK & JETTY AREA
- 4 LAKE
- 5 ISLAND WITH TROPICAL & EXOTIC PLANTS
- 6 PROMENADE OVERLOOKING LAKE
- 7 CYCLE TRACK
- 8 RAMP DOWN TO BASEMENT PARKING
- 9 BRIDGE CONNECTING THE TWO FEATURE PAVILLION
- 10 SHOPPING & EATING ZONE
- 11 GREEN / PLAY AREA
- 12 FOOTBALL FIELD
- 13 ROCK GARDEN
- 14 GOLF GREEN
- 15 SAND HAZARDS
- 16 PARTY LAWN
- 17 GUEST ROOMS
- 18 ENTRY TO CLUB AREA
- 19 PARKING FOR CLUB AREA
- 20 MAIN CLUB
- 21 SWIMMING POOL WITHIN CLUB PROMENADE
- 22 PLAY FIELDS/COURTS FOR SECTORS WITH SPORTS CLUB
- 23 CYCLE TRACK IN BETWEEN GREEN
- 24 BACK ENTRANCED TO SCHOOL PROMENADE FOR FOOTBALL FIELD AND ATHLETIC TRACK
- 25 FOOTBALL FIELD CUM ATHLETIC TRACK
- 26 GOLF CLUB
- 27 BUFFER GREEN AREA NEAR STP AND GOLF COARSE
- 28 WATER FEATURE
- 29 24 MT. WIDE ROAD
- 30 ROUND ABOUT
- 31 45 MT WIDE ROAD
- 32 BABY GARDEN
- 33 RAMP ON
- 34 FLOWER GARDEN
- 35 WATER CHANNEL IN CLUB AREA
- 36 GRASS STEPS
- 37 OPEN EXHIBITION & MULTIPURPOSE AREA
- 38 FEATURE FLOORING PATTERN WITH PALM AVENUE

- 39 PRIMARY SCHOOL/NURSERY
- 40 SCHOOL ENTRANCE FLOORING PATTERN
- 41 PARKING FOR SCHOOL
- 42 AUDITORIUM/CONFERENCE ROOM
- 43 PARKING FOR AUDITORIUM
- 44 PUBLIC PARKING
- 45 EXHIBITION & CULTURAL CENTRE
- 46 PETROL PUMP
- 47 SPACE FRAME
- 48 PEDESTRIAN ENTRY FROM 45 MT WIDE ROAD
- 49 VEHICULAR ENTRY FROM 45 MT WIDE ROAD
- 50 VEHICULAR ENTRY FROM 24 MT WIDE ROAD





# SITE MAP





# SPECIFICATIONS

LOCATION	FLOOR	EXTERNAL DOOR AND WINDOW	ELECTRICAL FITTINGS	WALLS	FITTINGS	INTERNAL DOOR	HARDWARE	ELECTRICAL	WATER SUPPLY	CEILINGS
LIVING ROOM	Vitrified Tiles	Powder Coated Aluminium with Double Rebate	Sheet and Switches	Oil Bound Distemper	-	Flush Shutter with Wooden Frame	All doors and windows with metal fittings along with mortice lock on the main door	Copper wiring and PVC concealed conduit. Provision for adequate light and power points as well as Television and T.V. outlets with modular switches and protective M.C.B.'s	Underground and overhead water tanks with pumps and 24 hours water supply. Individual R.O. plant of standard make in each kitchen.	Oil Bound Distemper
DINING	Vitrified Tiles	Powder Coated Aluminium with Double Rebate	Sheet and Switches	Oil Bound Distemper	-	Flush Shutter with Wooden Frame				Oil Bound Distemper
BEDROOM	Vitrified Tiles	Powder Coated Aluminium with Double Rebate	Sheet and Switches	Oil Bound Distemper	-	Flush Shutter with Wooden Frame				Oil Bound Distemper
MASTER BEDROOM	Vitrified Tiles	Powder Coated Aluminium with Double Rebate	Sheet and Switches	Oil Bound Distemper	-	Flush Shutter with Wooden Frame				Oil Bound Distemper
DRESSING ROOM	Vitrified Tiles	Powder Coated Aluminium with Double Rebate	Sheet and Switches	Oil Bound Distemper	-	Flush Shutter with Wooden Frame				Oil Bound Distemper
SERVANT ROOM	Ceramic Tiles	Powder Coated Aluminium with Double Rebate	Sheet and Switches	Oil Bound Distemper	-	Flush Shutter with Wooden Frame				Oil Bound Distemper
KITCHEN	Vitrified Tiles	Powder Coated Aluminium with Double Rebate	Sheet and Switches	Ceramic Tiles of 2' height from the platform	Stainless Steel Sink with C.P. Fittings	Open				Oil Bound Distemper
TOILET	Ceramic Tiles	-	Sheet and Switches	Ceramic Tiles of 7' height	Washbasin WC & C.P. Fittings	Flush Shutter				False Ceiling
BALCONIES	Ceramic Tiles	-	Sheet and Switches	Oil Bound Distemper	-	-				Permanent Paint Finish
LIFT	P.V.C. Flooring	-	Sheet and Switches	-	-	-				-
LOBBIES/CORRIDOR	Kota Stone / Vitrified Tiles	-	-	Oil Bound Distemper	-	-				-
EXTERIOR FINISH	-	-	-	Texture Paint	-	Flush Shutter with Wooden Frame				-

**Structure :** Earthquake Resistance R.C.C. frame structure & non-load bearing brick walls  
**Communication & Security System :**  
**Intercom :** Intercom facility in all flats connected with security room and administration office.  
**Security :** Guard room at main Entrance for Efficient manual.  
**Lift :** Two Lift in each tower with SS Finish car.

**Garbage shoot :** One garbage shoot shall be available in each tower.  
**FFS :** Each & Every tower will be well equipped with Fire Suppression System.  
 (i) Dry : The Fire extinguishers will be available at each floor.  
 (ii) Sound : The Fire Alarm System will be available at each floor.  
 (iii) Wet : The provision of Wet Pipe line at each floor.



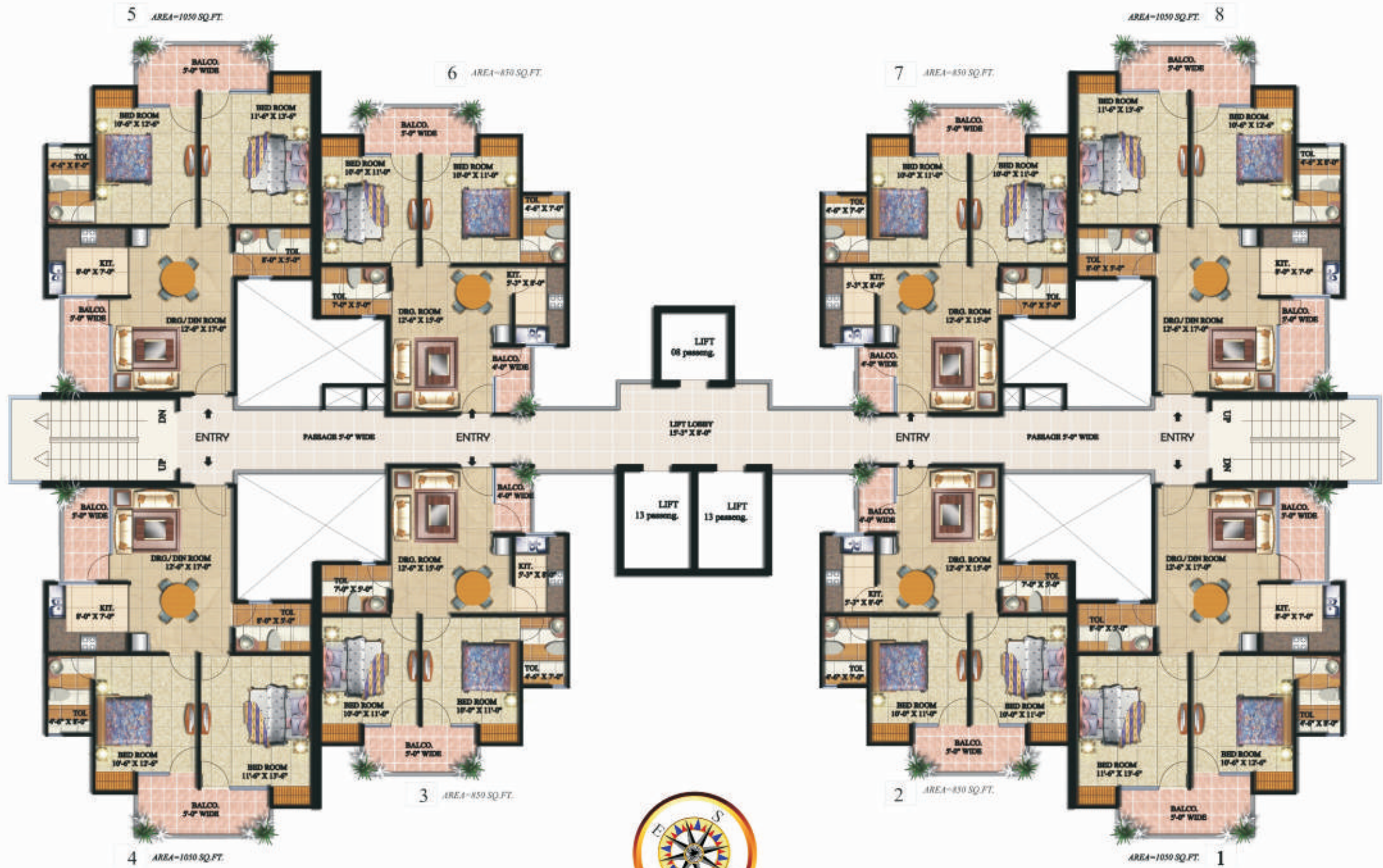
## ARIEL VIEW





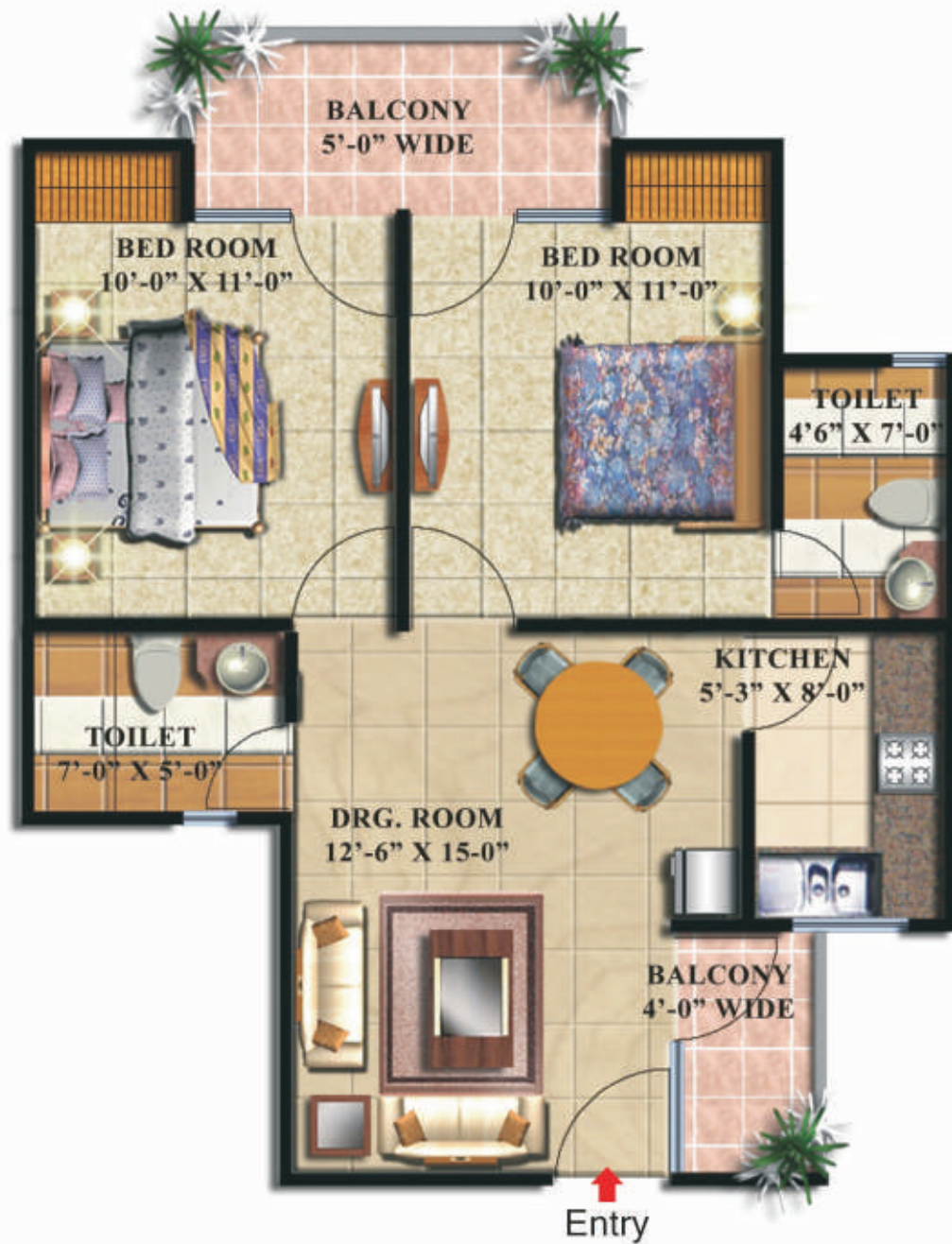
Block E • Area - 850 sq. ft. • Flat No. 2, 3, 6, 7

Block E • Area - 1050 sq. ft. • Flat No. ,1 4, 5, 8





Area 850 sq. ft. • 2 Bedroom Flat



Area 1050 sq. ft. • 2 Bedroom Flat





Block-F • Area - 1050 sq. ft. • Flat No. 3, 4, 5, 6



Block-F • Area - 1320 sq. ft. • Flat No. 1, 2





Block - F • 1050 sq. ft. • 2 Bedroom Flat



Block - F • 1320 sq. ft. • 2 Bedroom + Study





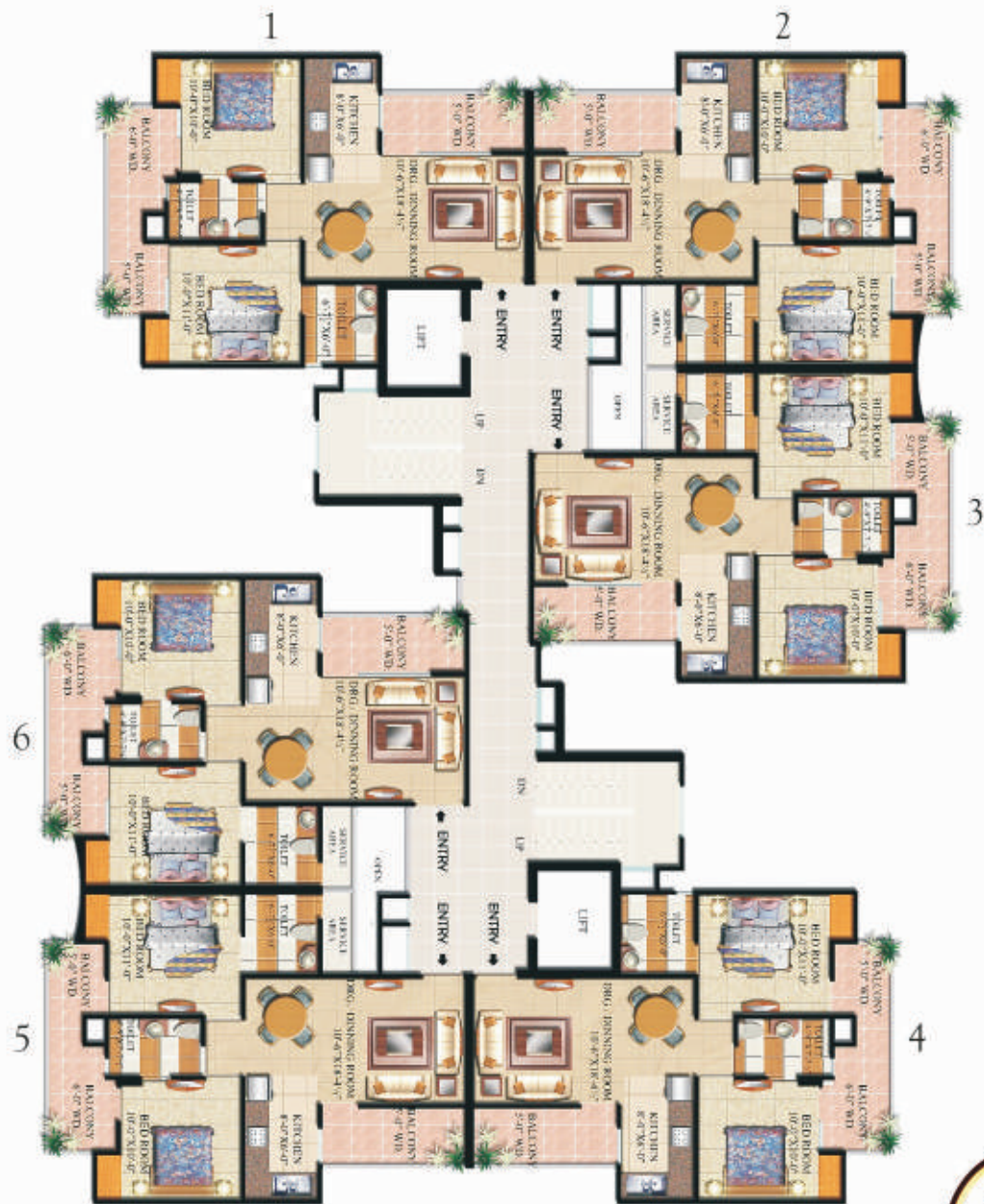
Block - A1 • 1000 sq. ft.

2 Bedroom Flat • Flat No. 1, 2, 3, 4, 5, 6





Block - A2 • 1000 sq. ft.



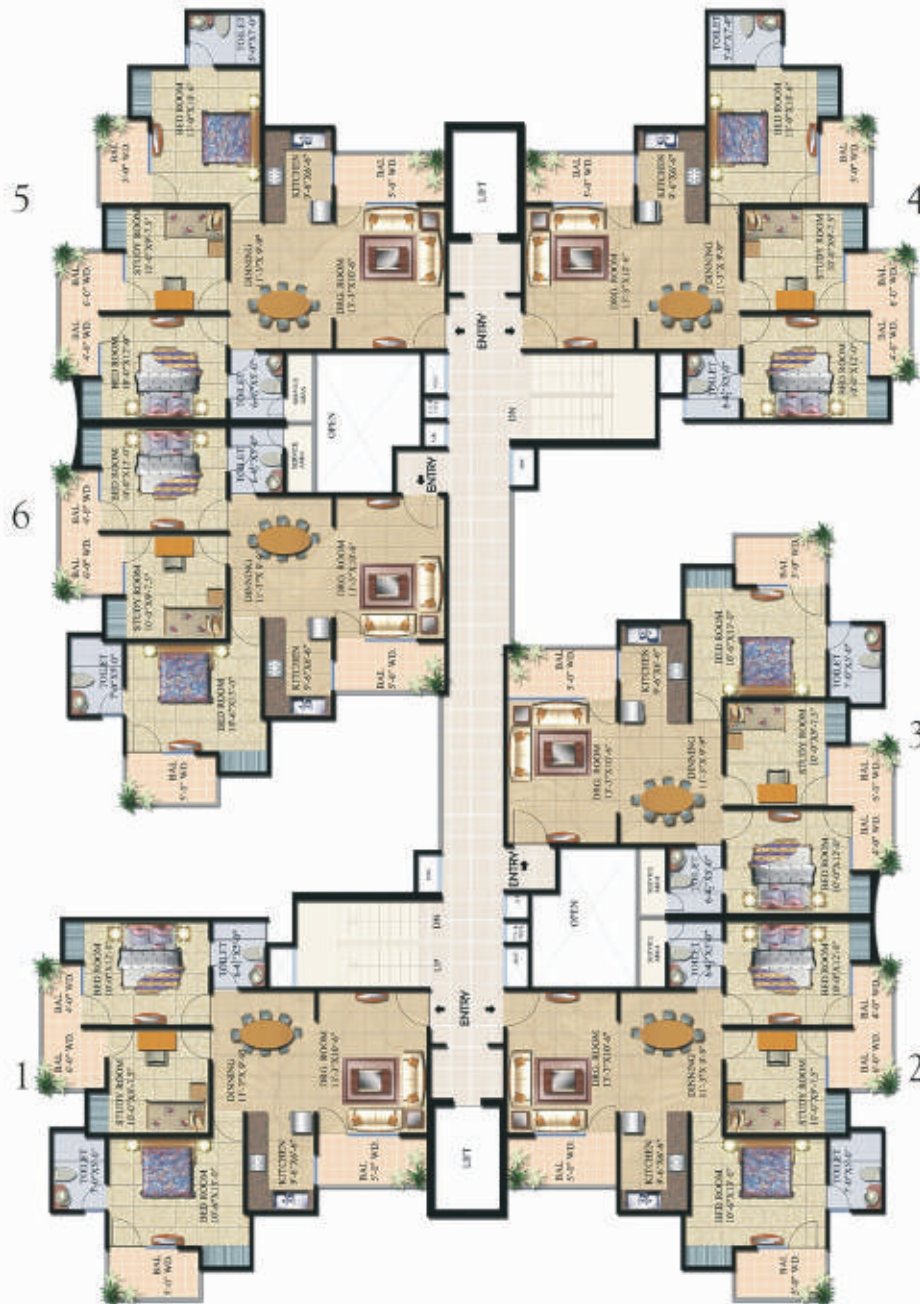
2 Bedroom Flat • Flat No. 1, 2, 3, 4, 5, 6





Block - C1 • 1320 sq. ft.

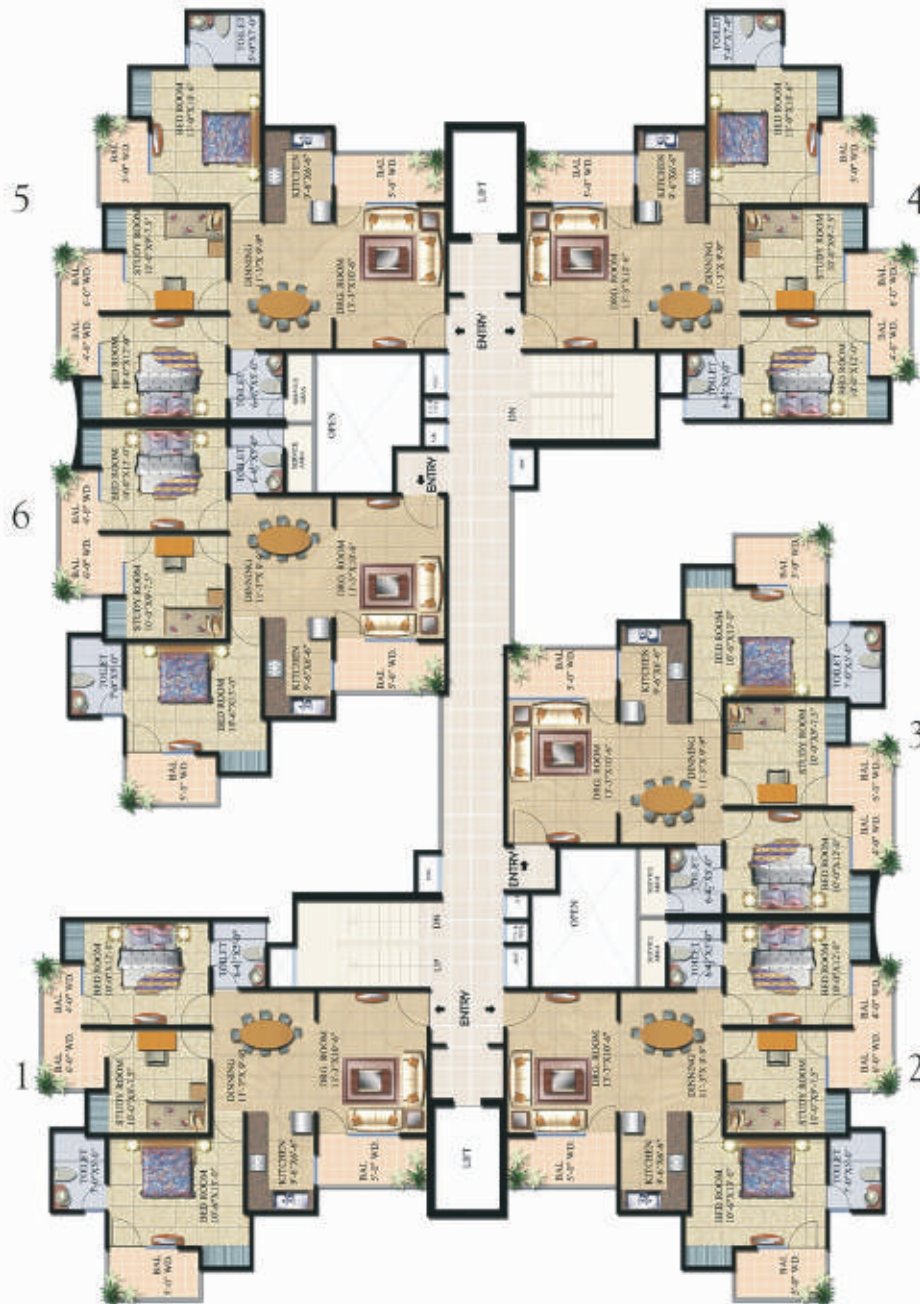
2 Bedroom Flat+ Study • Flat No. 1, 2, 3, 4, 5, 6





Block - C1 • 1320 sq. ft.

2 Bedroom Flat+ Study • Flat No. 1, 2, 3, 4, 5, 6





Block - D2 • 1625 sq. ft. • Flat No. 1, 4

Block - D2 • 1425 sq. ft. • Flat No. 2, 3





1625 sq. ft. • 3 Bedroom Flat + Store / Puja Room

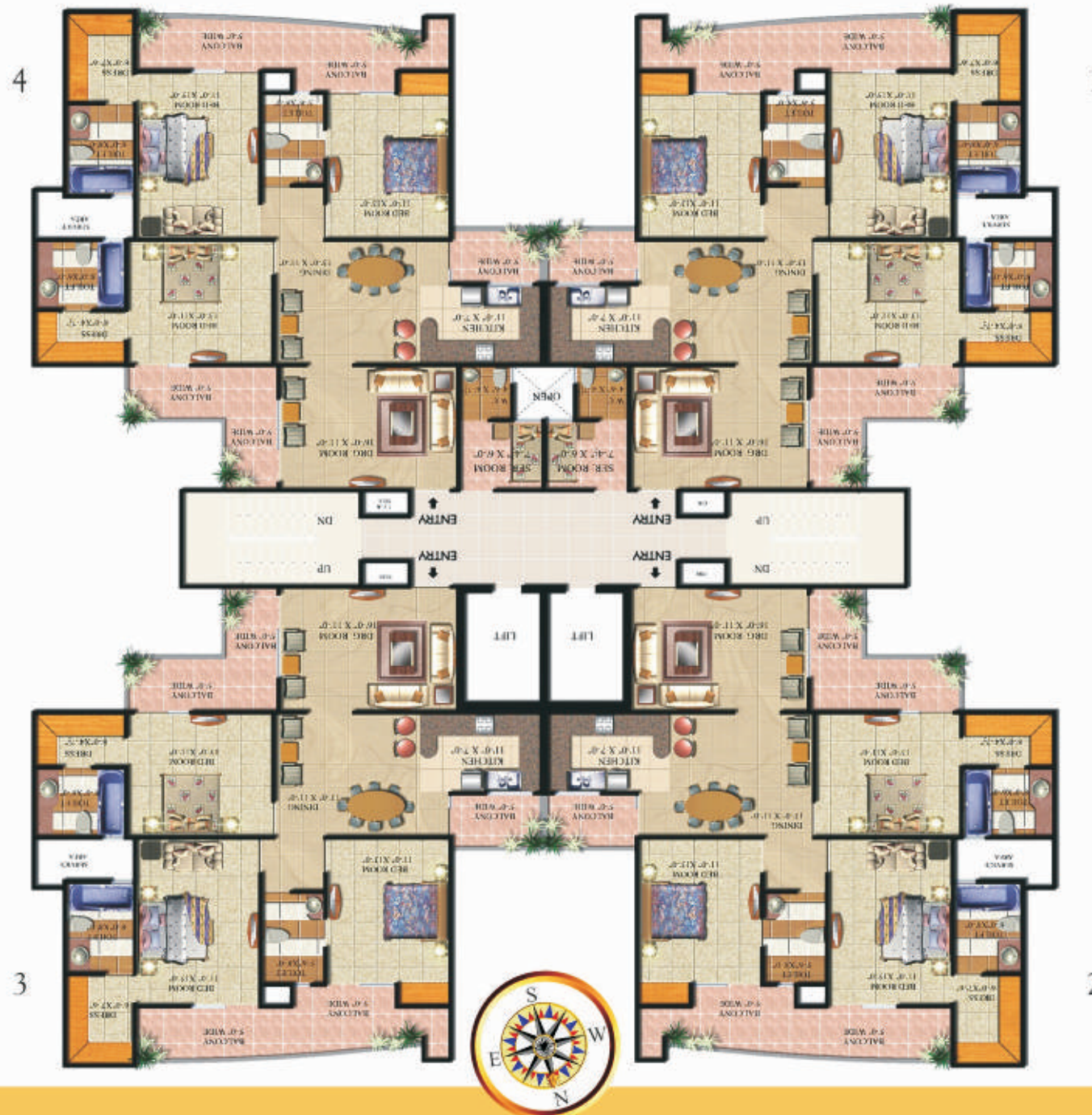
1425 sq. ft. • 3 Bedroom Flat + Entrance Foyer





Block - D 1 • 2075 sq. ft. • Flat No. 1, 4

Block - D 1 • 1975 sq. ft. • Flat No. 2, 3





Block - D 1 • 1975 Sq. Ft. • Flat No. 2, 3

Block - D 1 • 2075 sq. ft. • Flat No. 1, 4



3 BHK + 2 Dressing Rooms

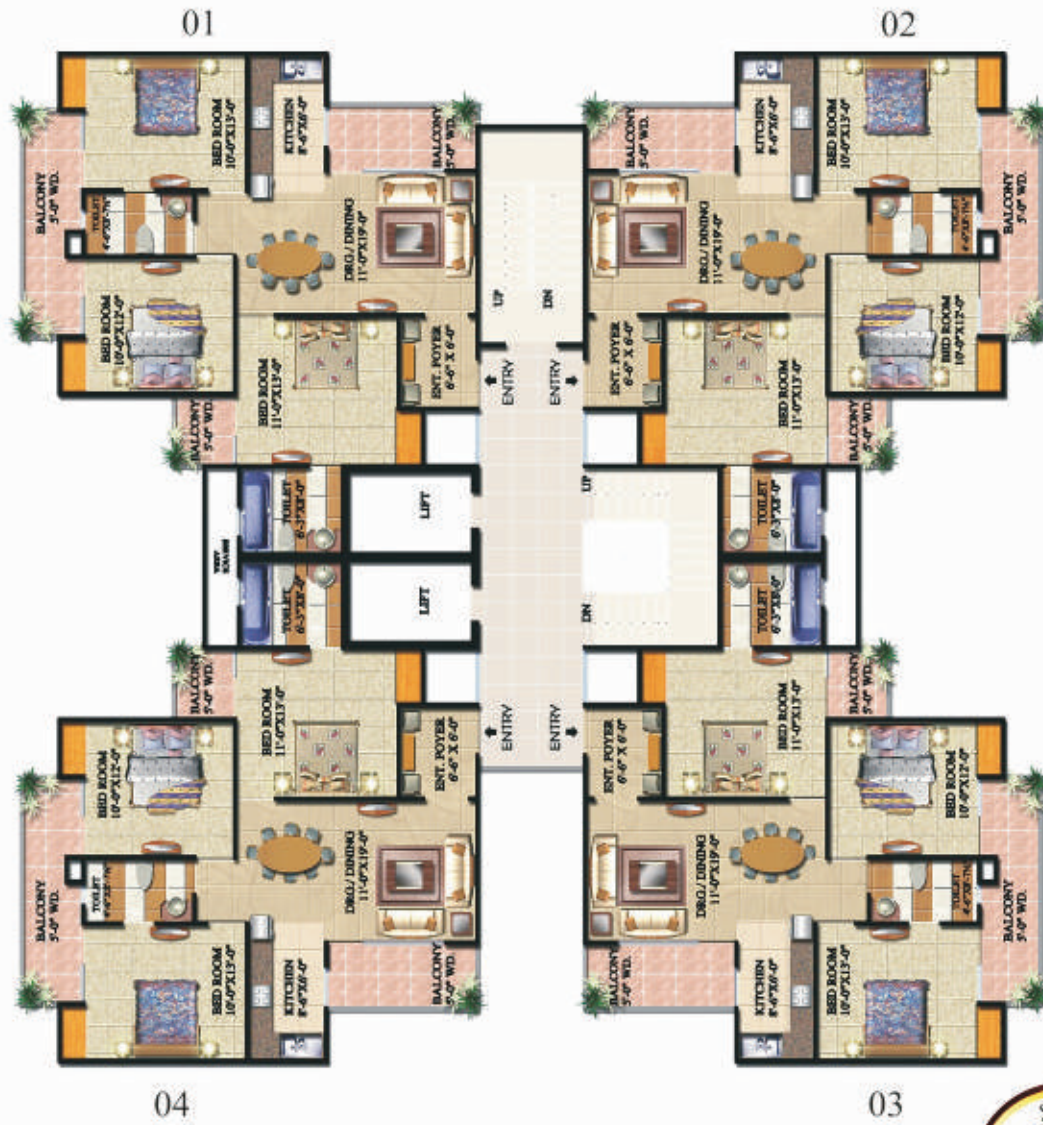


3 BHK + 2 Dressing Rooms & Servant Room



Block - B • 1425 sq. ft. • Flat No. 1, 2, 3, 4

3 Bedroom Flat + Entrance Foyer





SUPER AREA = 870 SQ. FT.



Galaxy  
Tower



SUPER AREA = 1015 SQ. FT.



Galaxy  
Tower



SUPER AREA = 1320 SQ. FT.



Galaxy  
Tower

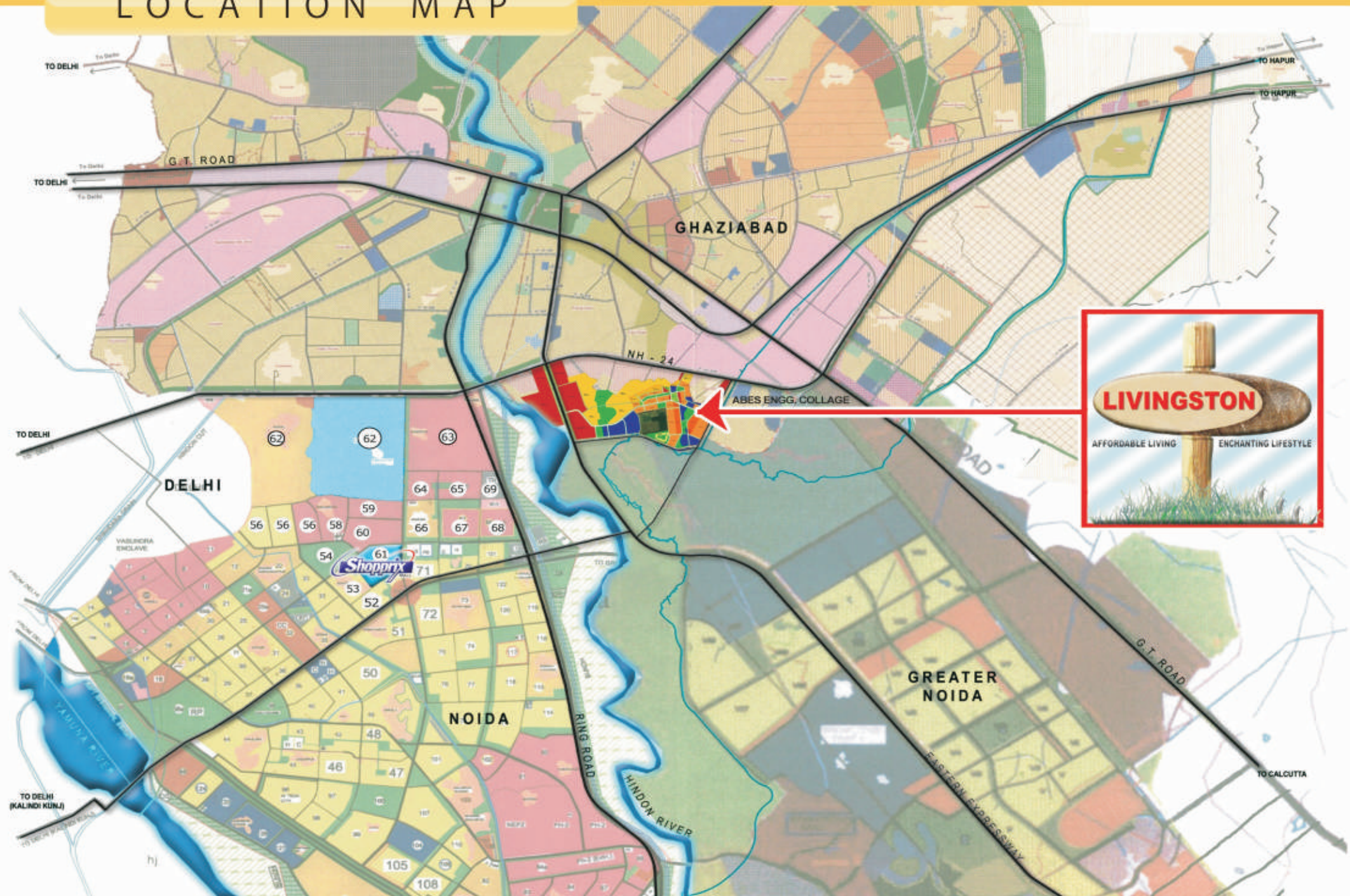




S. No.	Tower No.	Area (Sq. Ft.)
1	1, 2	870
2	3, 4, 8, 9	1015
3	5, 6, 7	1320

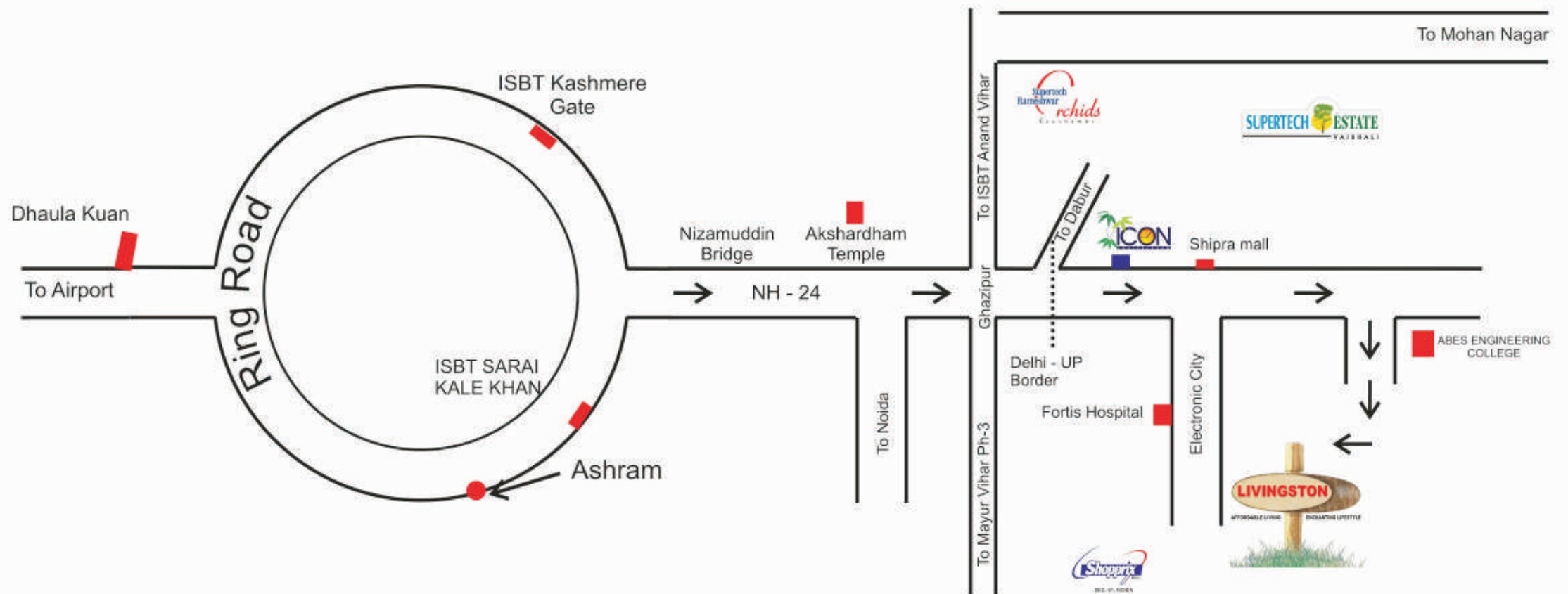


# LOCATION MAP





# Location Map





# Supertech Projects



Residency  
Vaishali



Estate  
Vaishali



Rameshwer Orchid  
Kaushambi



Avant-Grade  
Vaishali



Icon  
Indrapuram



Emerald Court  
Expressway, Noida



Ecociti  
Sector-137, Noida



Ceyane  
Expressway Noida



Czar Suites  
Greater Noida



Palm Green  
Meerut



34 Pavilion  
Noida



Palm Green  
Moradabad



Metropolis City  
Rudrapur



Upcountry  
Yamuna Expressway, Gr. Noida



Ecovillage-1, 2 & 3  
Gr. Noida



Golf Country  
Yamuna Expressway



E-Square  
Sector-96, Noida



Shopprix Mall, Noida



Shopprix Mall, Kaushambi



Shopprix Mall, Vaishali



Shopprix Mall, Meerut



Pentagon Mall, Haridwar



Meerut Sports City  
Meerut



Metropolis Mall, Rudrapur





Site Office : Supertech Livingston, NH-24, Crossings Republik, Ghaziabad (U.P.) • Supertech House : B 28-29, Sector-58, Noida (U.P.) • Tel : 0120-4572600

Registered Office : 1114, Hemkunt Chambers, 89, Nehru Place-110 019 • Email : [adityavikram@supertechlimited.com](mailto:adityavikram@supertechlimited.com)

Contact : 9810944738 • Visit at : [www.supertechlimited.com](http://www.supertechlimited.com)