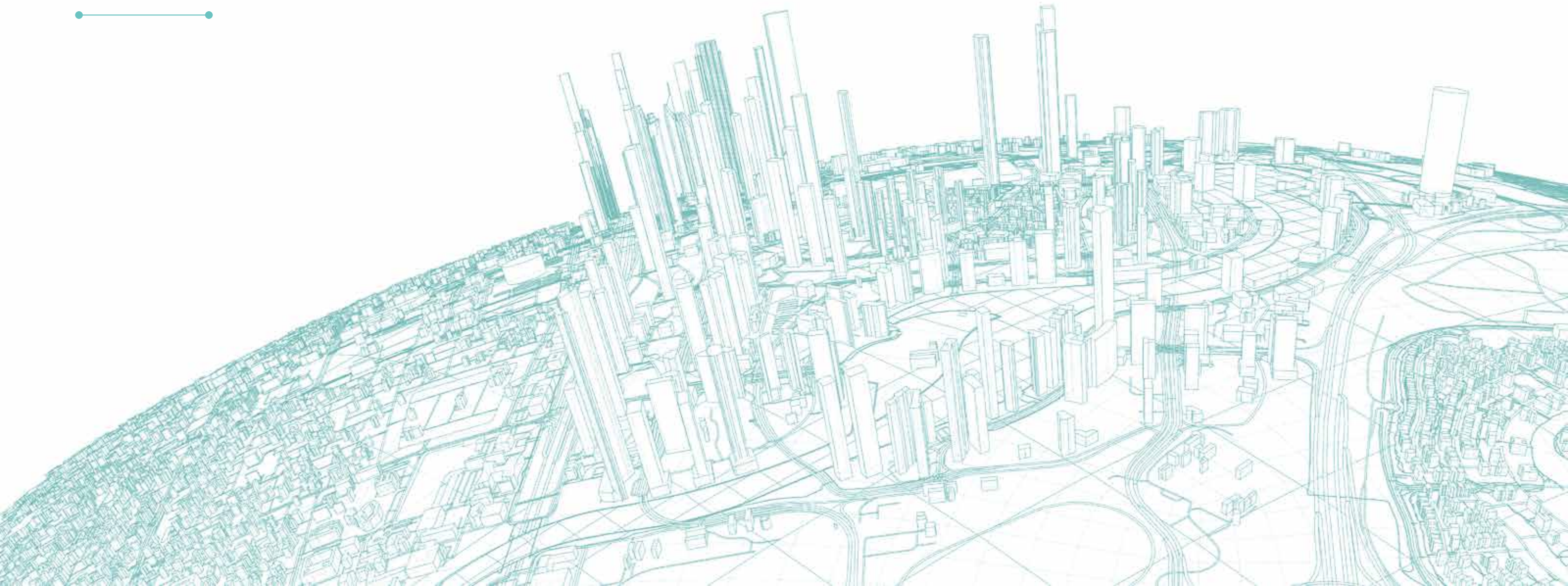


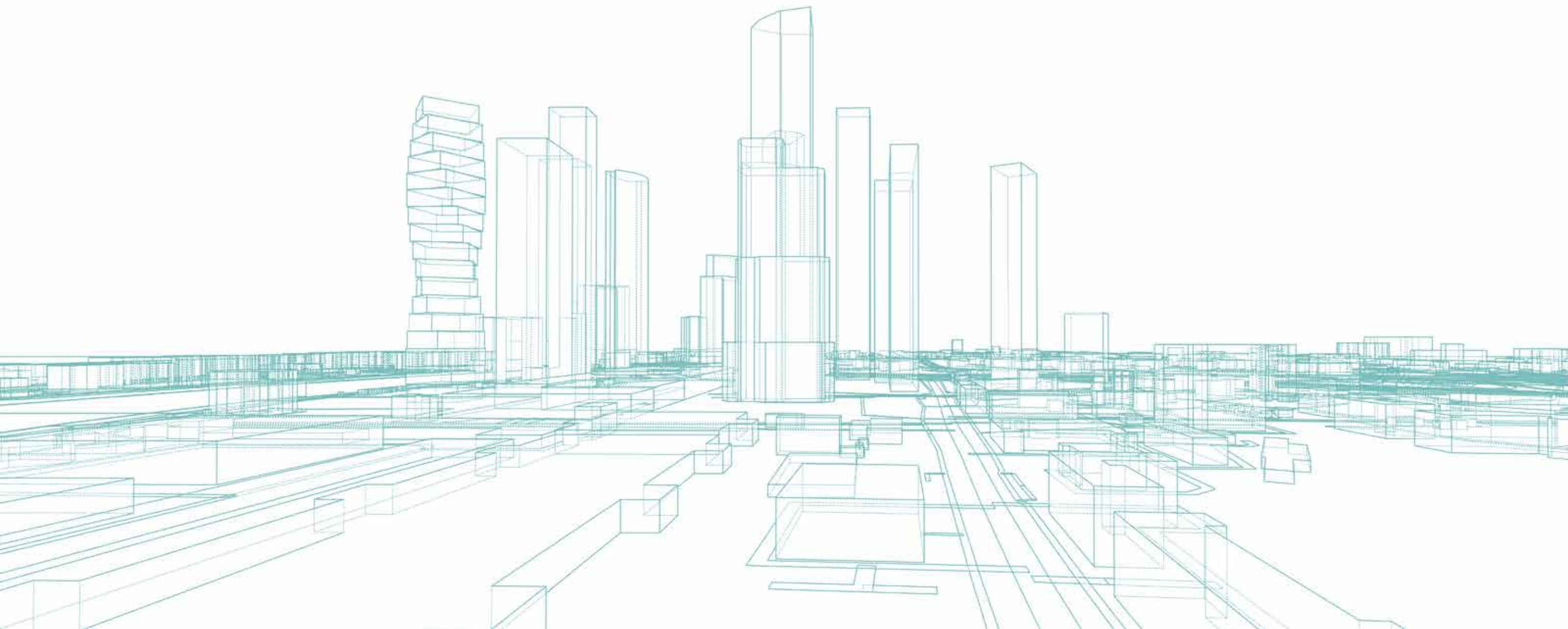
Fusion 85

The image features the text "Fusion 85" in a white serif font. The word "Fusion" is in a classic serif typeface, while "85" is in a bold, modern sans-serif font. The background is a solid blue color. A diagonal stripe, split into orange and pink sections, runs from the bottom left towards the top right, passing behind the numbers "85".

REAL ESTATE IS GROWING ACROSS THE GLOBE



AT SUPERHUMAN SPEED

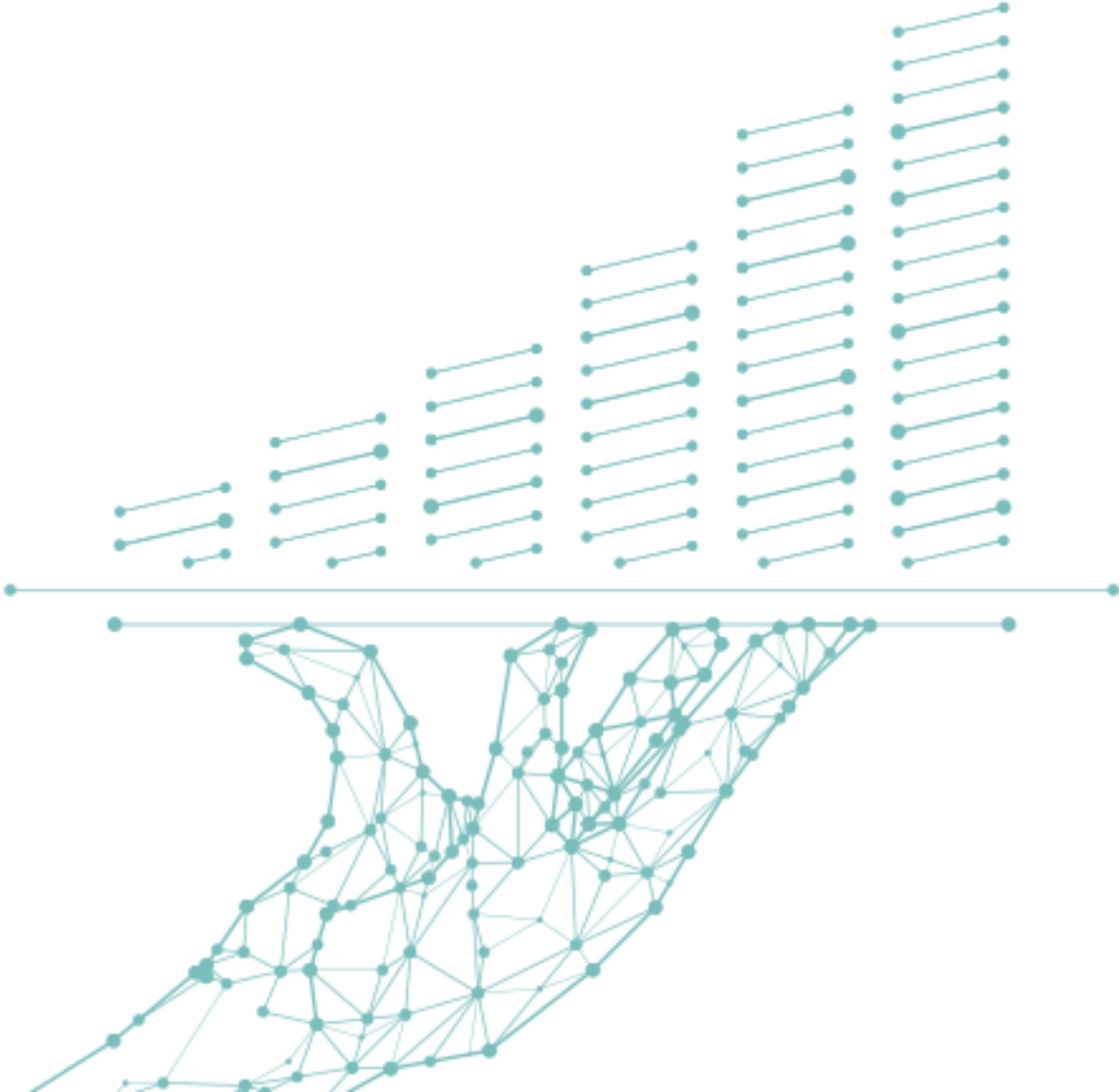


NEW YORK HOUSING MARKET



A CAGR of **5.3%**

79.16% Price appreciation
(10 years)

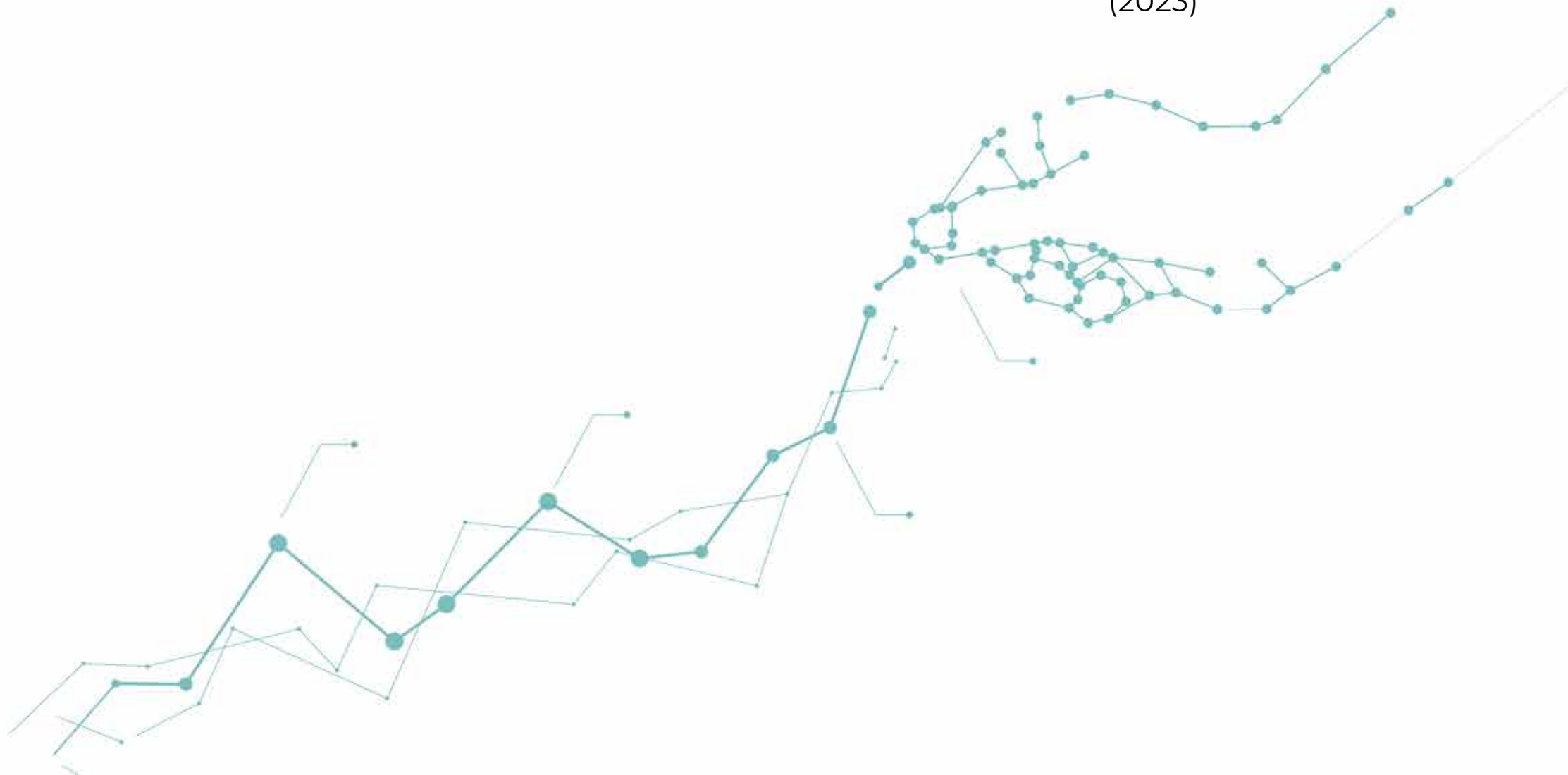


DUBAI HOUSING MARKET

A remarkable CAGR of **28%**

122.76%

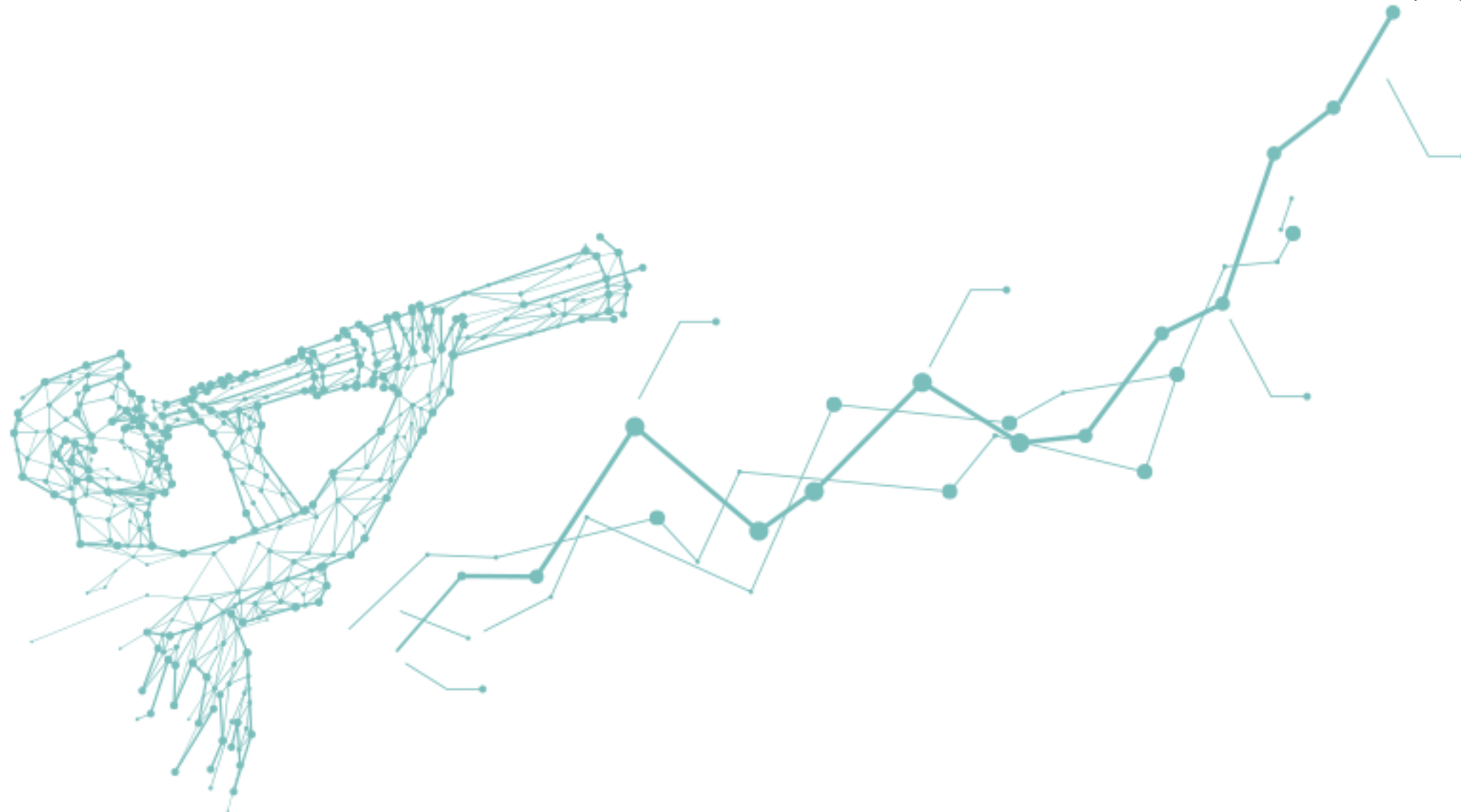
Price appreciation
(2023)



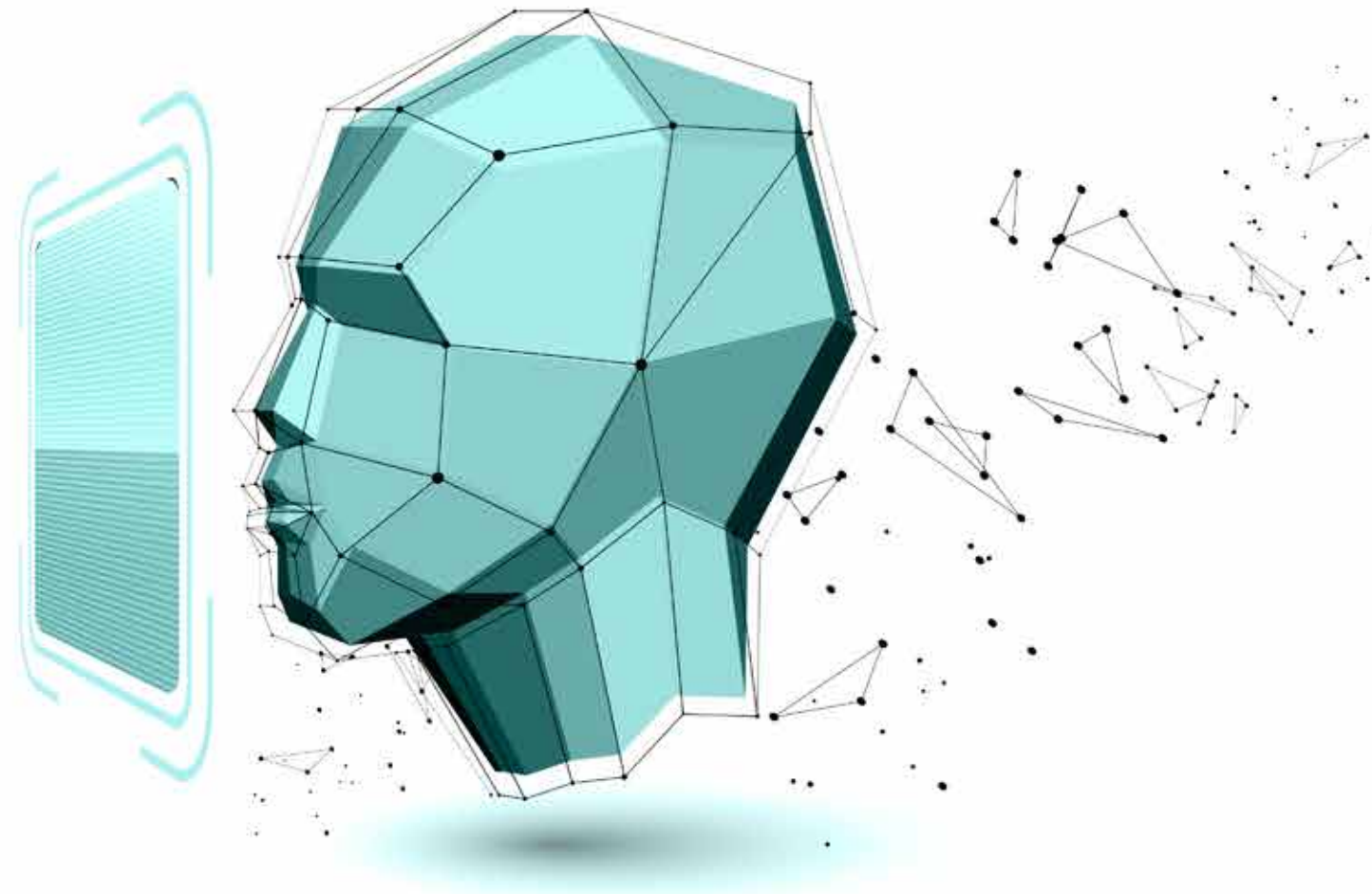
SINGAPORE HOUSING MARKET

A CAGR of **6.57%**

83.39% Price appreciation
(10 years)



A BIG CATALYST OF THIS GROWTH IS
INNOVATION IN HOME TECH
DEMAND FOR **RESORT STYLE LIFESTYLE**



IN NYC, SALE OF RESORT STYLE
HOMES UP BY 23.6% PERCENT

26% HOMES IN NEW YORK
ARE SMART HOMES



DUBAI RECORDED A SALE
OF **10 MILLION** RESORT STYLE
HOMES IN 2023

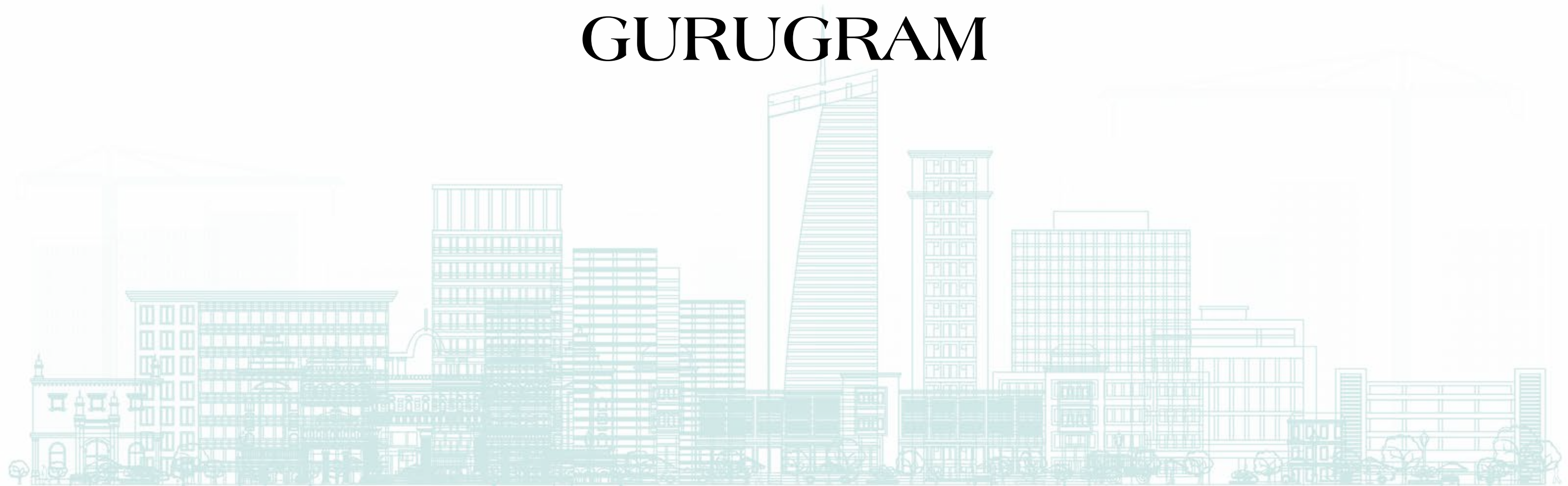
DUBAI SMART HOMES MARKET
WORTH **\$113.8** MILLION



482.4 THOUSAND SMART HOMES IN SINGAPORE CITY



GURUGRAM



GURUGRAM'S GROWTH STORY

- Highest ever price hike of 113% in 2023
- Expected CAGR rate of 26% in 2024



THE DRIVERS OF GURUGRAM'S RISE



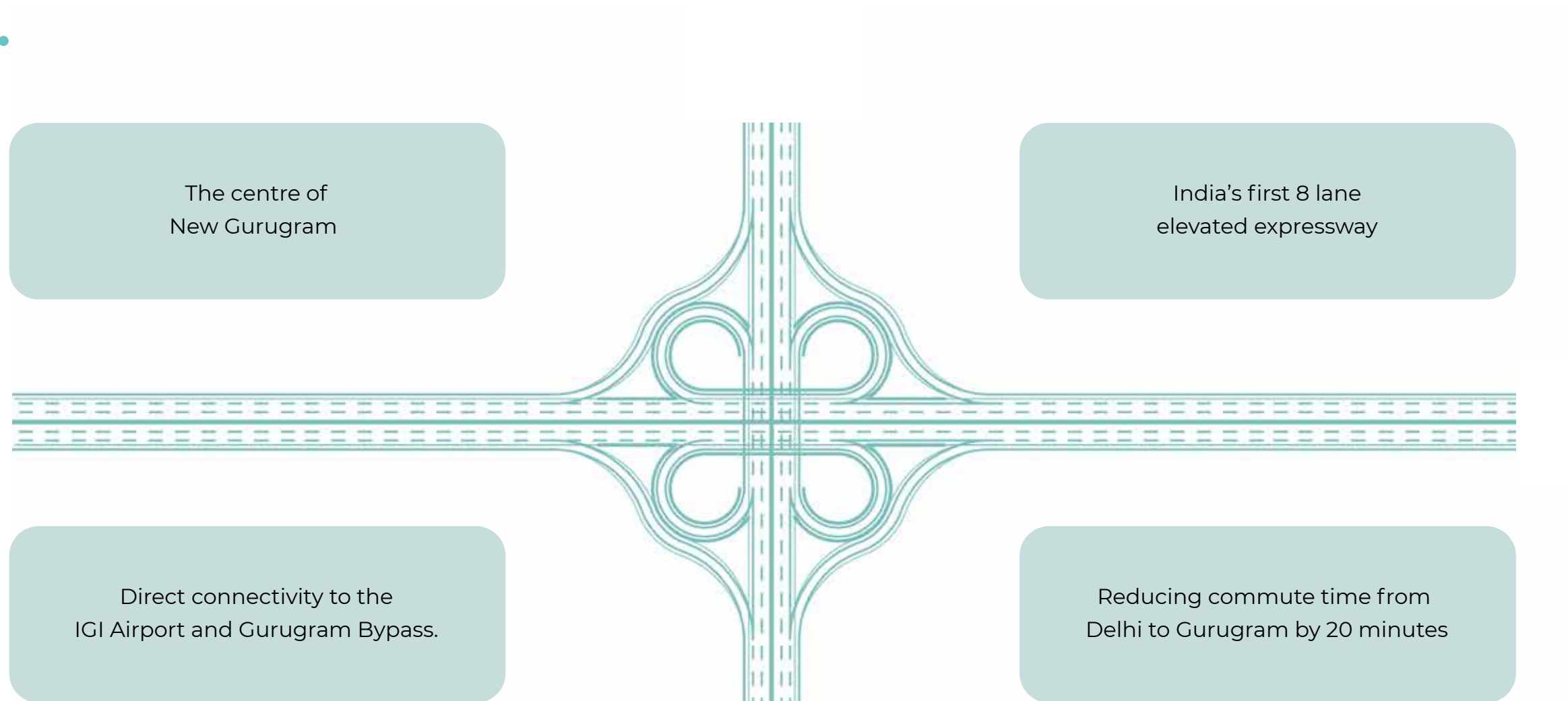
- Skyscrapers
- Fortune 500 Corporates
- Dwarka Expressway
- Clover Leaf Expressway
- 360° Connectivity



IMAGINE A PLACE BLENDED WITH
RESORT STYLE LIVING
WITH AI ENABLED
AMENITIES



STARTING AT CLOVER LEAF



LOCATED ON THE LARGEST EXPRESSWAY OF INDIA DXP - DWARKA EXPRESSWAY



A destination that is said to be the next **Sheikh Jaid Road**



ALSO
SURROUNDED BY



NANDAKA

A one-of-a-kind, 47-storey residential tower inspired by the powerful human desire to reach beyond what is expected and live a life where excellence is ordinary by Ganga Realty.



Reference Image



GLOBAL CITY



Reference Image

IGI AIRPORT



SULTANPUR NATIONAL PARK



DELHI GOLF CLUB



INTERNATIONAL SPORTS COMPLEX

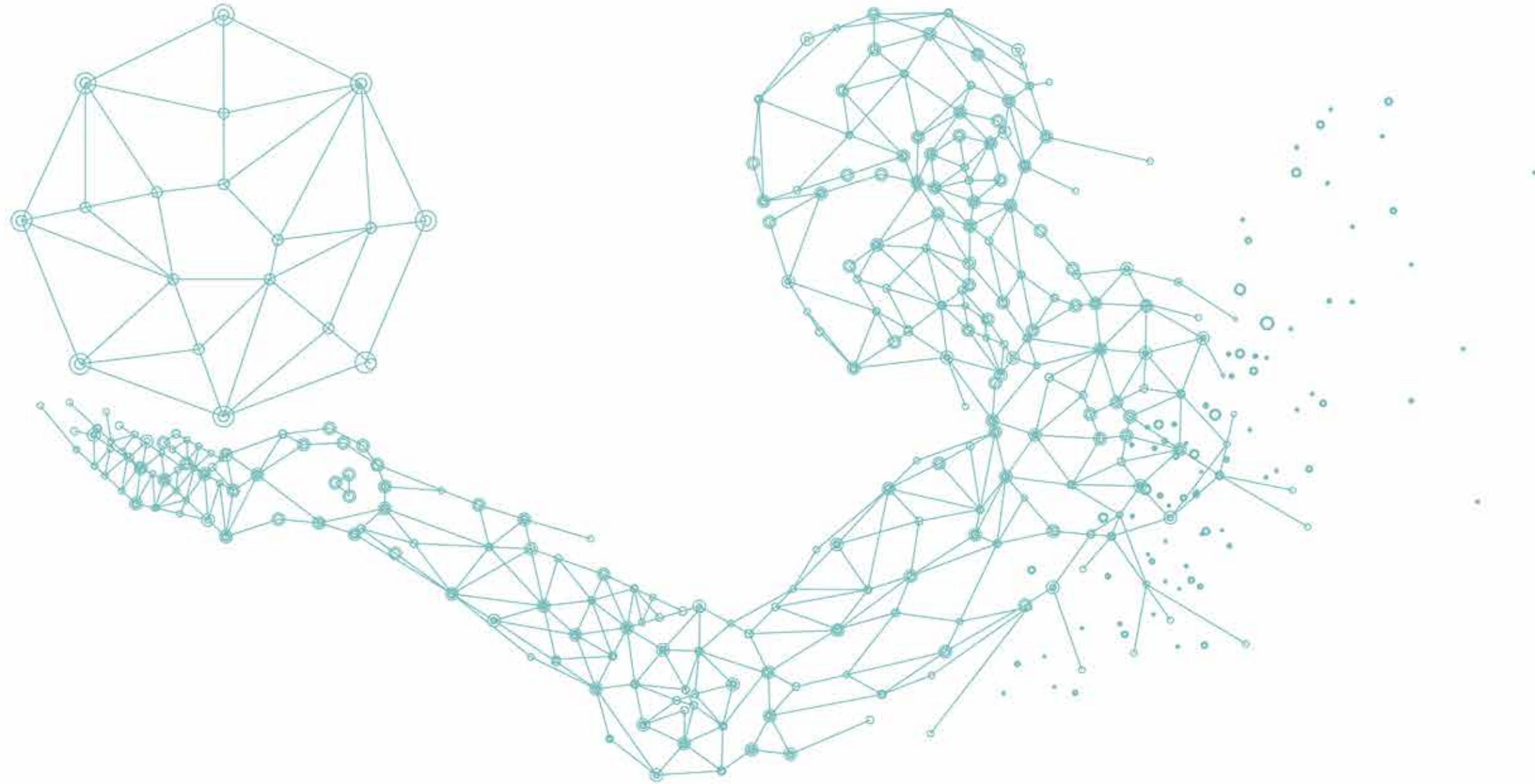
DIPLOMATIC ENCLAVE 2



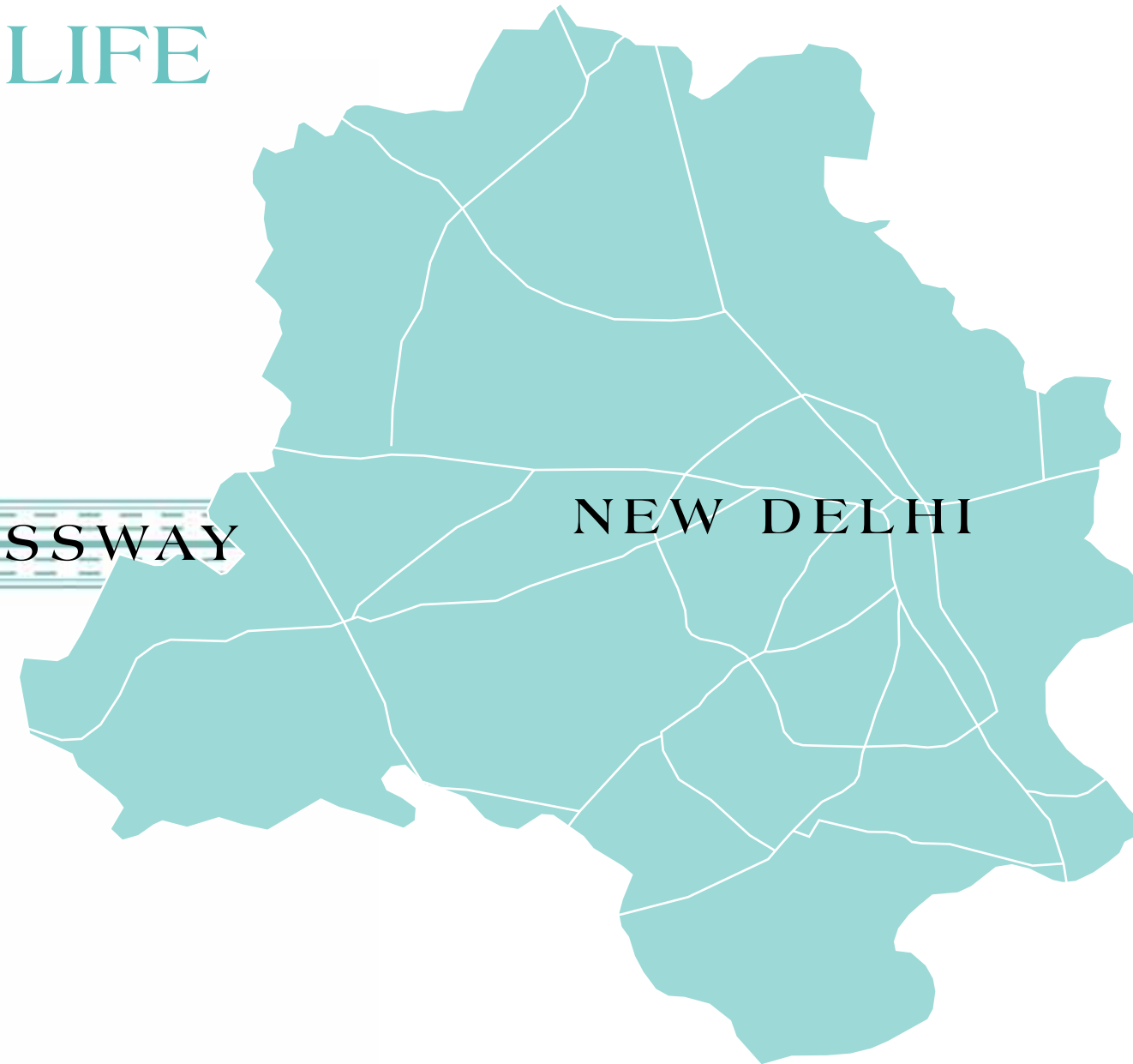
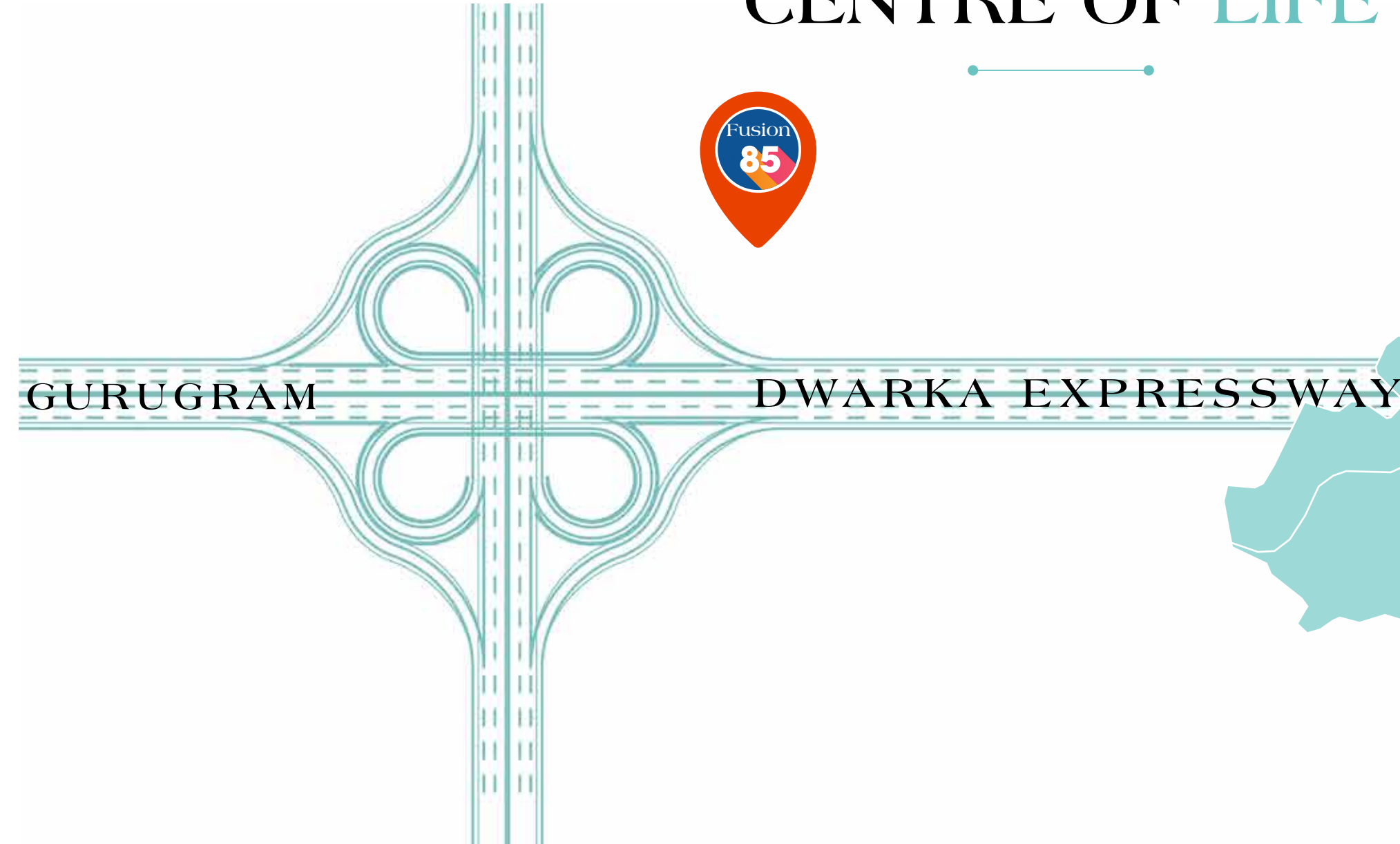
PRESENTING

AI ENABLED RESORT HOMES

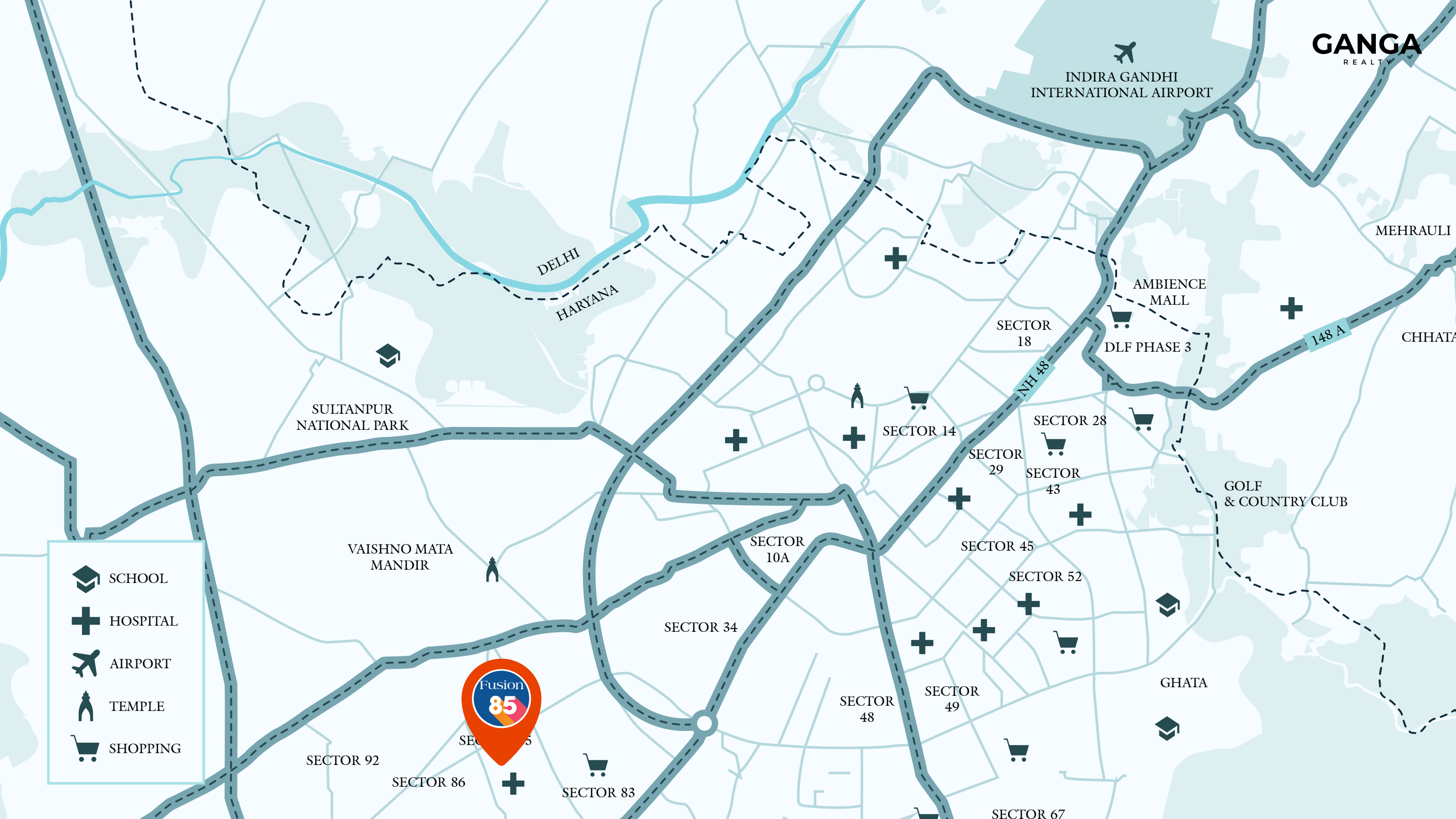
IN SEC 85





TAKING SHAPE AT CENTRE OF LIFE



NEW DELHI



-  SCHOOL
-  HOSPITAL
-  AIRPORT
-  TEMPLE
-  SHOPPING



SITE CONNECTIVITY

The site is accessible from a main CPR(135m Wide) road through a 24.0-meter.



BRINGING
THE BRILLIANT
MINDS TOGETHER

Uha x Scape

x M



DESIGNED BY

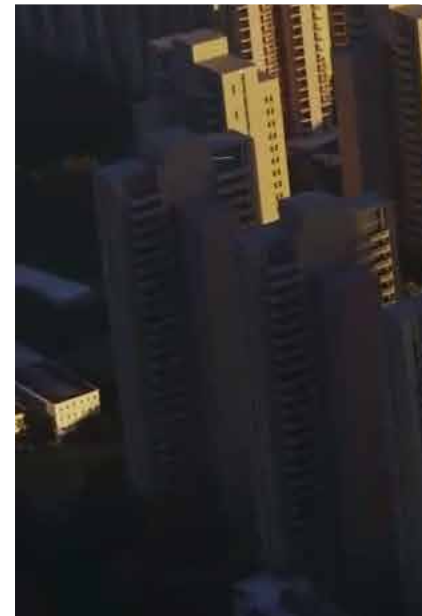


UHA is an award-winning international design studio with 50 projects on-site across 3 continents.

Uha



**Qingdao Waterfront,
Shandong (China)**



Nandaka, India

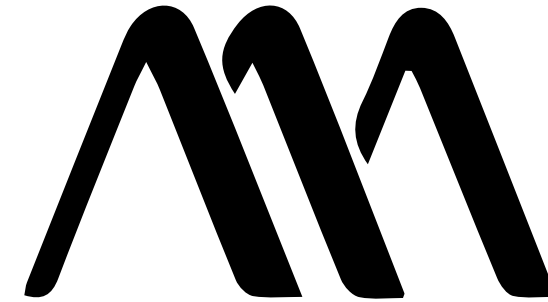
LANDSCAPE DESIGN BY



Macfarlane + Associates is a Placemaking agency delivering meaningful public realm design for complex urban regeneration projects.

FEATURED PROJECTS

- Oxford Science Park Plots 23 – 26,
- Deloitte University EMEA, France



Infinity Towers, Cyprus

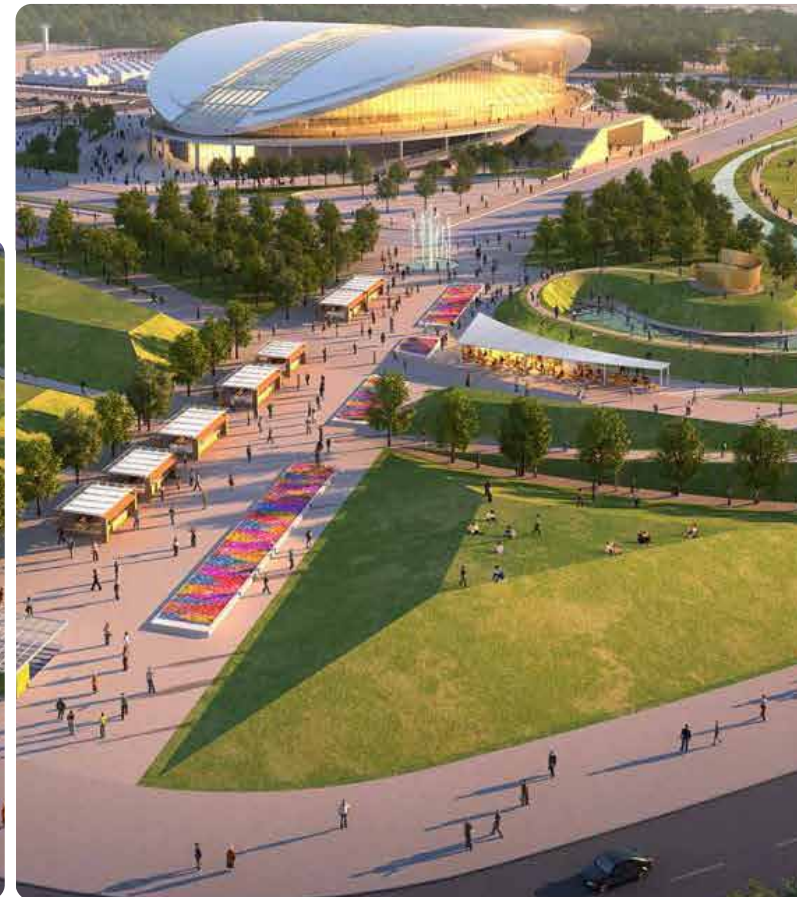
MASTERPLAN DESIGN BY

Scape

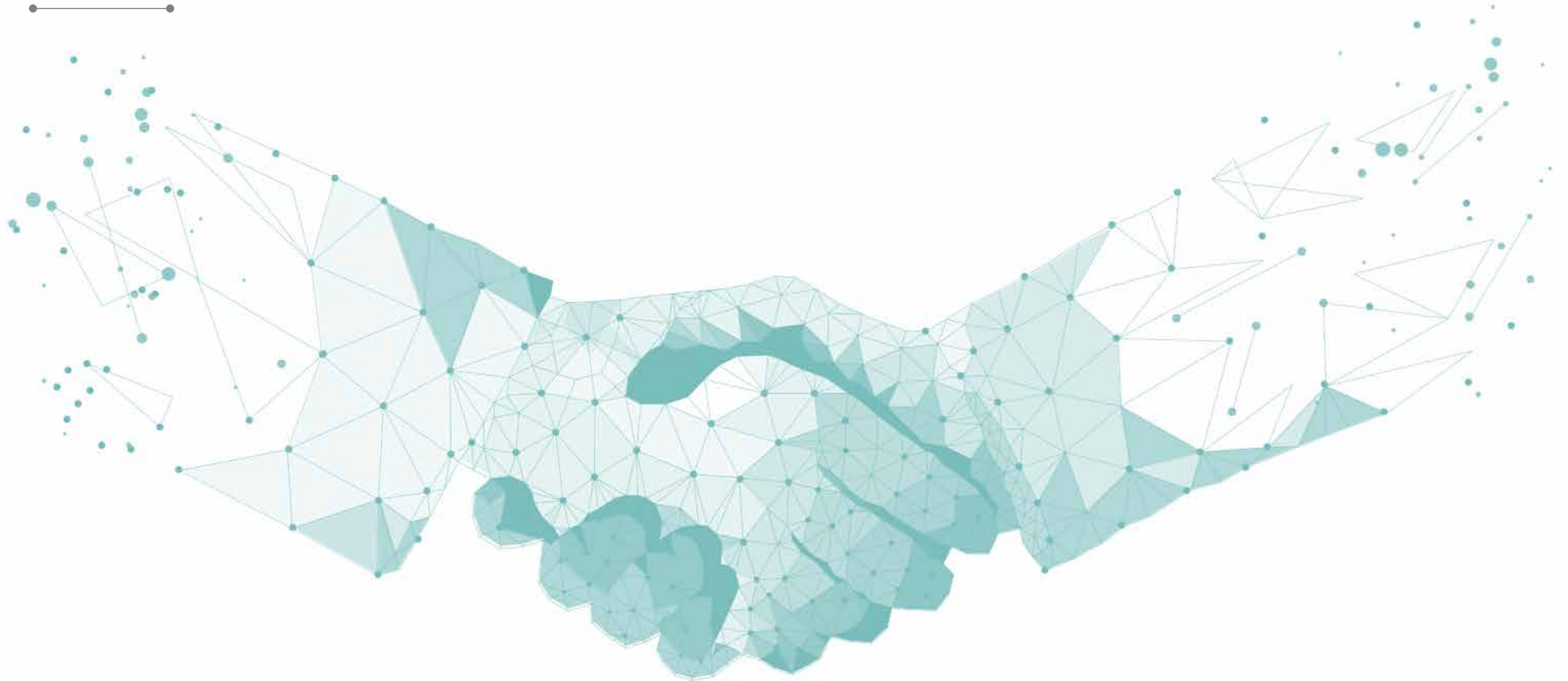
Scape Design is a celebrated, award-winning boutique landscape architectural and environmental master-planning practice specialising in the hospitality and luxury lifestyle markets across the globe.

FEATURED PROJECTS

- Camelias, India
- Caspian Waterfront, Azerbaijan
- North Gate Mall, Qatar



VALUABLE PARTNERS



Knowledge Partner



Technical Partner



Facade Partner



F&B Partner



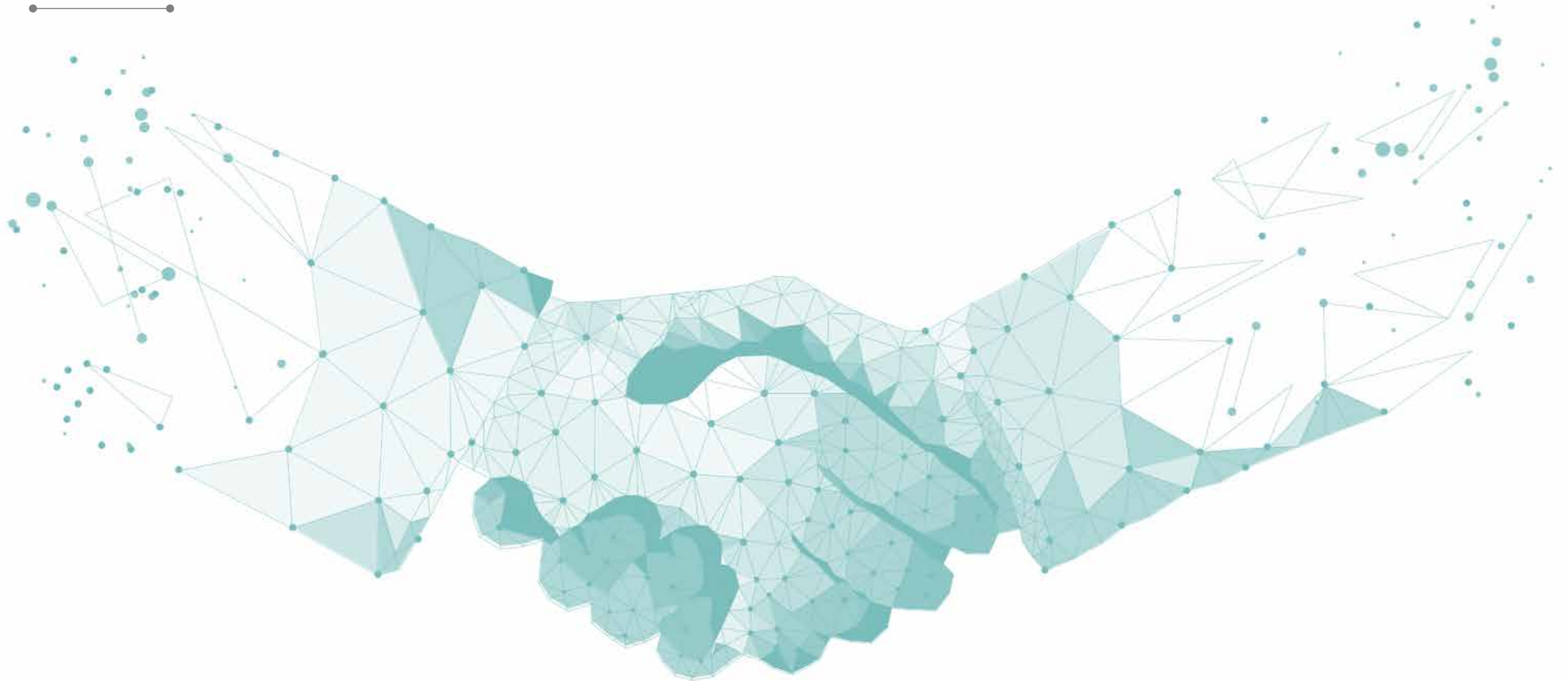
Hospitality Partner



Audit Partner



MEMBERSHIPS AND ASSOCIATIONS



Founding member



Patron Member



Safety Auditor



Structural Designer



Governing Member Body



Cloud Collab Partner



BRINGING THE **TALLEST**
RESIDENTIAL TOWERS
IN VICINITY



3 ICONIC TOWERS



Artistic Impression

AMIDST 70% GREEN AND OPEN SPACES



3 & 4 BHK + UTILITY & SERVANT

3.3M floor-to-floor height



2 PRIVATE ELEVATORS + SERVICE ELEVATOR FOR EACH APARTMENT

10 ELEVATORS IN A TOWER



DEDICATED LIFT LOBBIES



**A NEW DIMENSION
TO RESORT LIVING**



4 INFINITY POOLS



MULTI-ELEMENT SPA



AQUA YOGA



RELAXATION PODS



EARTH-INSPIRED GARDEN



BUSINESS CLUB



LIBRARY



GAME ROOM



BEAUTY BAR



INTERACTIVE ART INSTALLATION

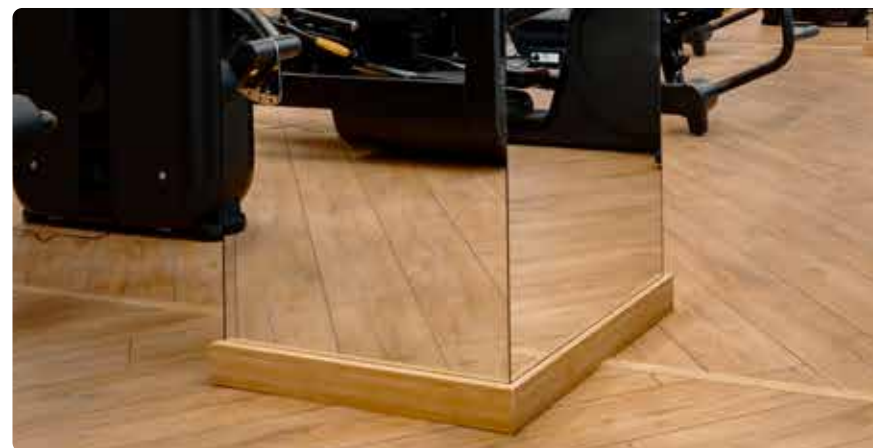
MUSEUM



JEWELLERY CAFE



JOGGING TRACK



STATE-OF-THE-ART FITNESS CENTRE



SPORTS CLUB



DESIGNER CAR PARK



VALET PARKING

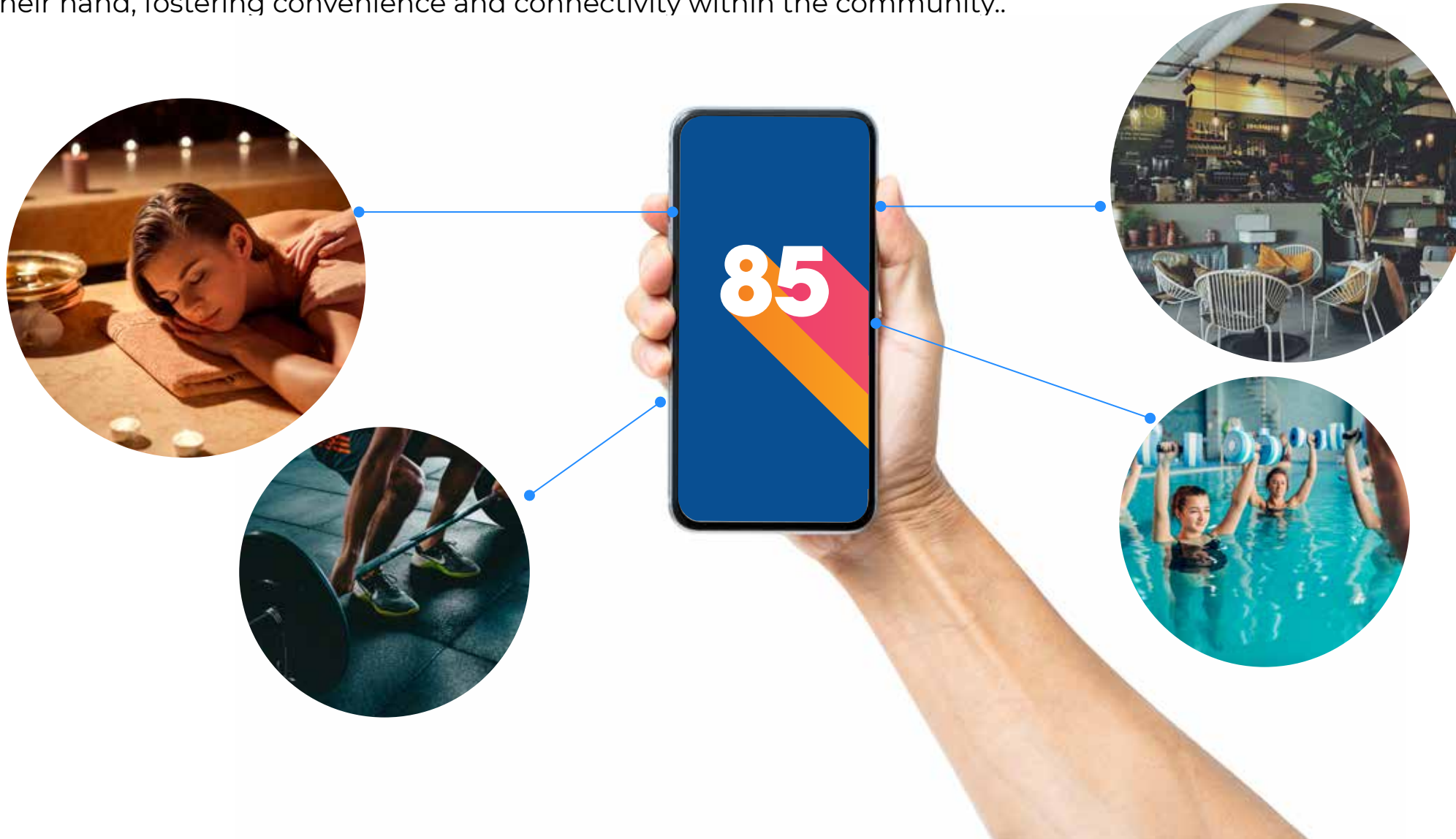


A blue wireframe globe is the central focus, composed of a network of interconnected nodes and lines. Several circular icons containing human silhouettes are scattered across the globe's surface. To the right of the globe, a long, tapering structure of the same wireframe network extends outwards, suggesting a signal or data path. The entire graphic is set against a plain white background.

**A NEW DIMENSION
TO CONNECTED LIVING**

RESICONNECT

A comprehensive tech system designed for residential flats, offering seamless access to the building's facilities through a user-friendly mobile application. From scheduling spa appointments to booking amenities, residents can efficiently manage their needs and preferences from the palm of their hand, fostering convenience and connectivity within the community..



TECH HOME



Fully accessible end-to-end control over the complete system via single application.



BUILT-IN VOICE ASSISTANCE



Command over the smart home system
with built-in alexa voice control.



REAL-TIME UPDATES ON ENERGY USAGE

A detailed analysis of energy consumption throughout the month.



SMART SECURITY SYSTEM



Digital door lock system with fingerprint sensor and remote open access.



UNVEILLING THE
3RD DIMENSION
SOON

