

SANGUINE ROOTS

(Uit converted residential plotting gated society)

Near Heera bavdi, behind Sarvoday Nagar, Fanda link road , Titardi, Udaipur



Sanguine Properties Pvt. Ltd.



Sanguine Properties Pvt. Ltd.

Sanguine properties is a credible name in the realty domain of Udaipur. Working in the industry for more than 15 years. We have a good reputation in the real estate industry and gain a decent clientele as well.

After experiencing and understanding the needs of customers from a real estate developer. Growing base of so many happy customers from our various projects. We today firmly believe in our moto **CLEAN BUSINESS AND GROWING TRUST . Our team comprises some highly experienced and dedicated real estate developers .**

We are having resort, residential , commercial , villa , farmhouse projects in diff developing parts of udaipur

Our main locations in Udaipur are Tltardi, Dthinkli , R.K. Puram, Jogi talab , Dakan kotda, etc.

ABOUT PROJECT



102 residential plots



**Gated society with
cctv cameras**



**24000 sqft. of
garden, footpath,
well area**



**40000 sqft of open
greenery area after
garden**



**Bitumen road with
footpath , street
lights and plantation**



**Good connectivity
(200,150,100,60ft.
roads)**



**Connecting
residential,
commercial area**



**Electricity ,water
supply & drainage**

PLAN FEATURES



UIT Approved



Loanable



**Society garden, hill
and paal view**



**Quality work and
service**



**Peaceful locality
with good
connectivity**



**Verified documents
(Clear title)**



**Good for residence
and investment
purpose**



Vastu plantation

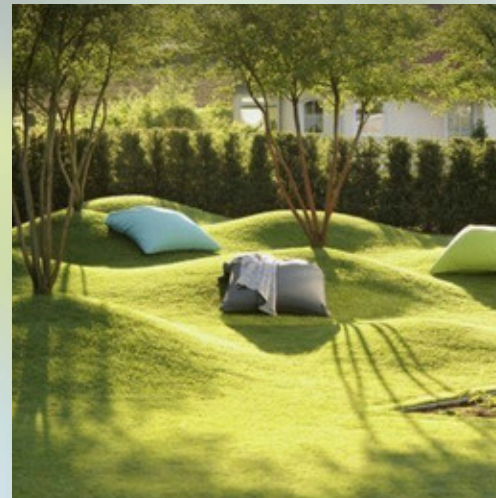
GARDEN FEATURES



Garden 1 (party lawn)



Garden 2 (Yoga/Meditation)



Garden 3 (Leisure)



Garden 4 with well



Gated society with footpath, Street lights



Kids playing / workout area



All play court



3 gazebo/ pergola

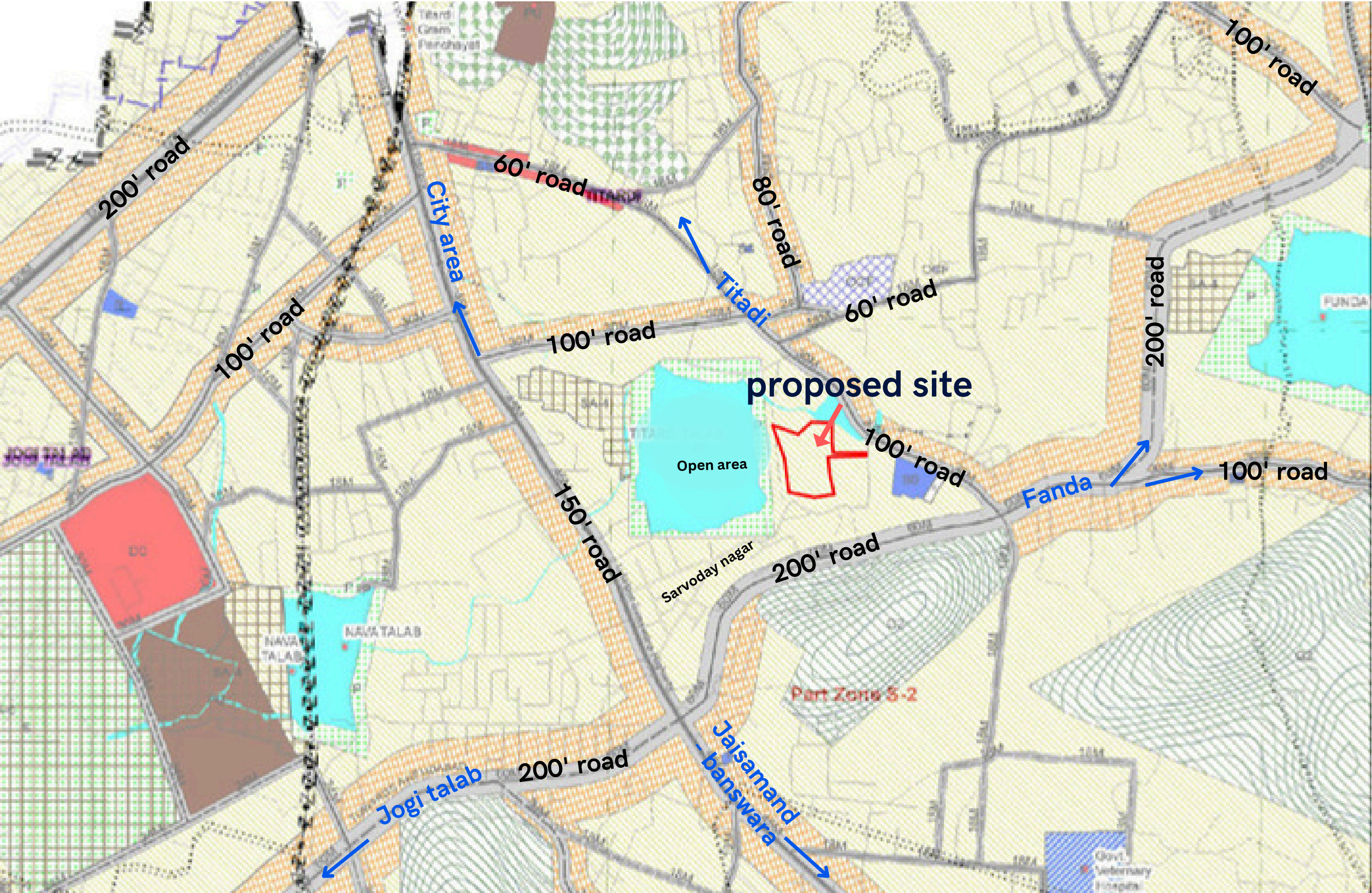


Amphitheatre

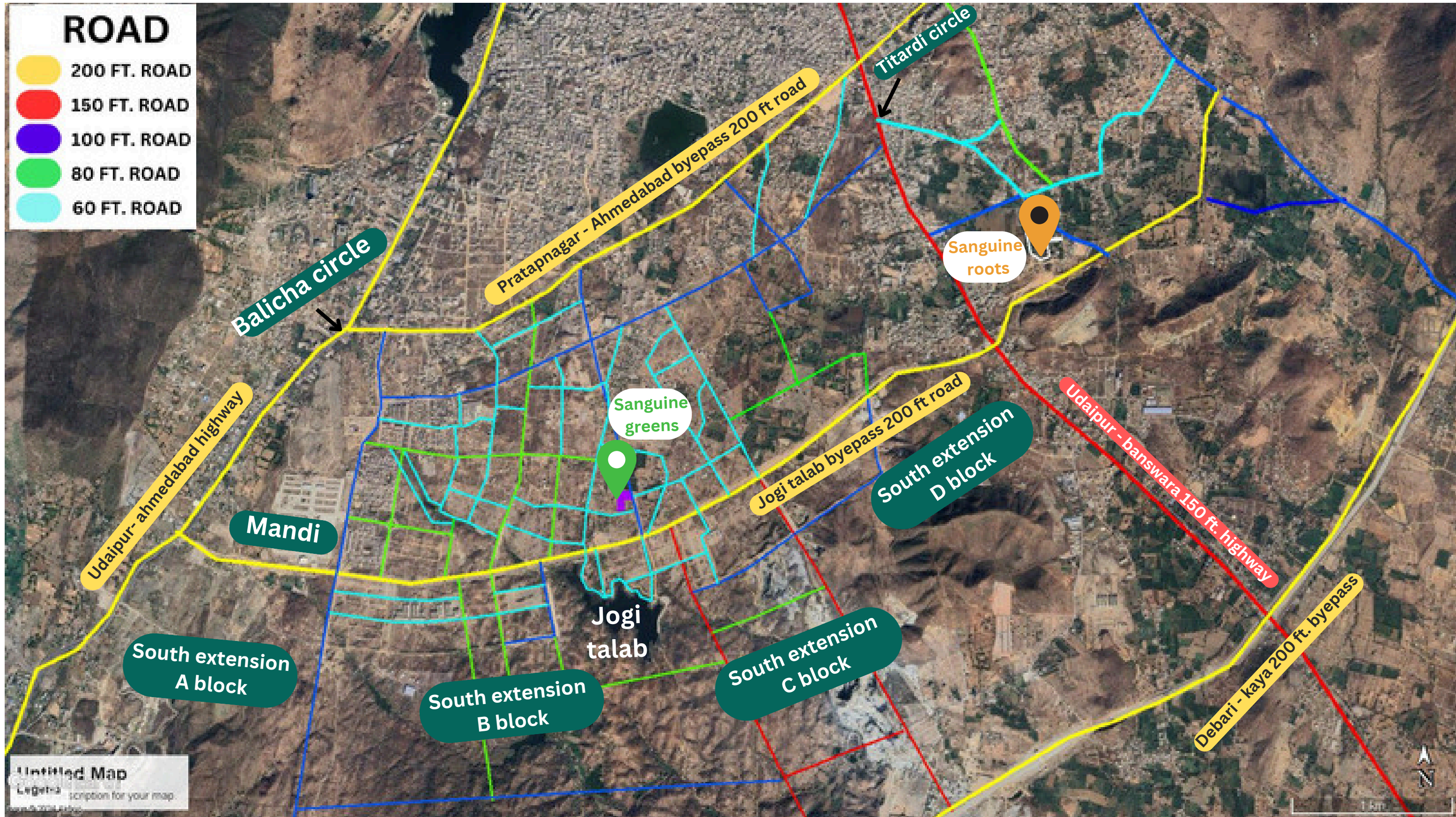


Layout Plan

UIT master plan



Google road connectivity



Major connectivity

ROADS CONNECTIVITY

- jogi talab 200 feet road : 100 meter, fanda 100 feet road : 40 meter
- **Banswara road : 0.5 Km**
- **Gupteshwar ji 60 feet road : 400 meter**
- **Debari - kaya bypass : 3 km**



HOSPITAL , SCHOOLS , COLLEGES

- **Geetanjali hospital : 4.1 kms**
- **St. Mary's school , scholars arena and other known schools : 1.6-2 km**
- **Savina police station : 2 km**
- **Railway station : 5 km**
- **Airport : 25km**
- **Bank and ATM : 1 km**

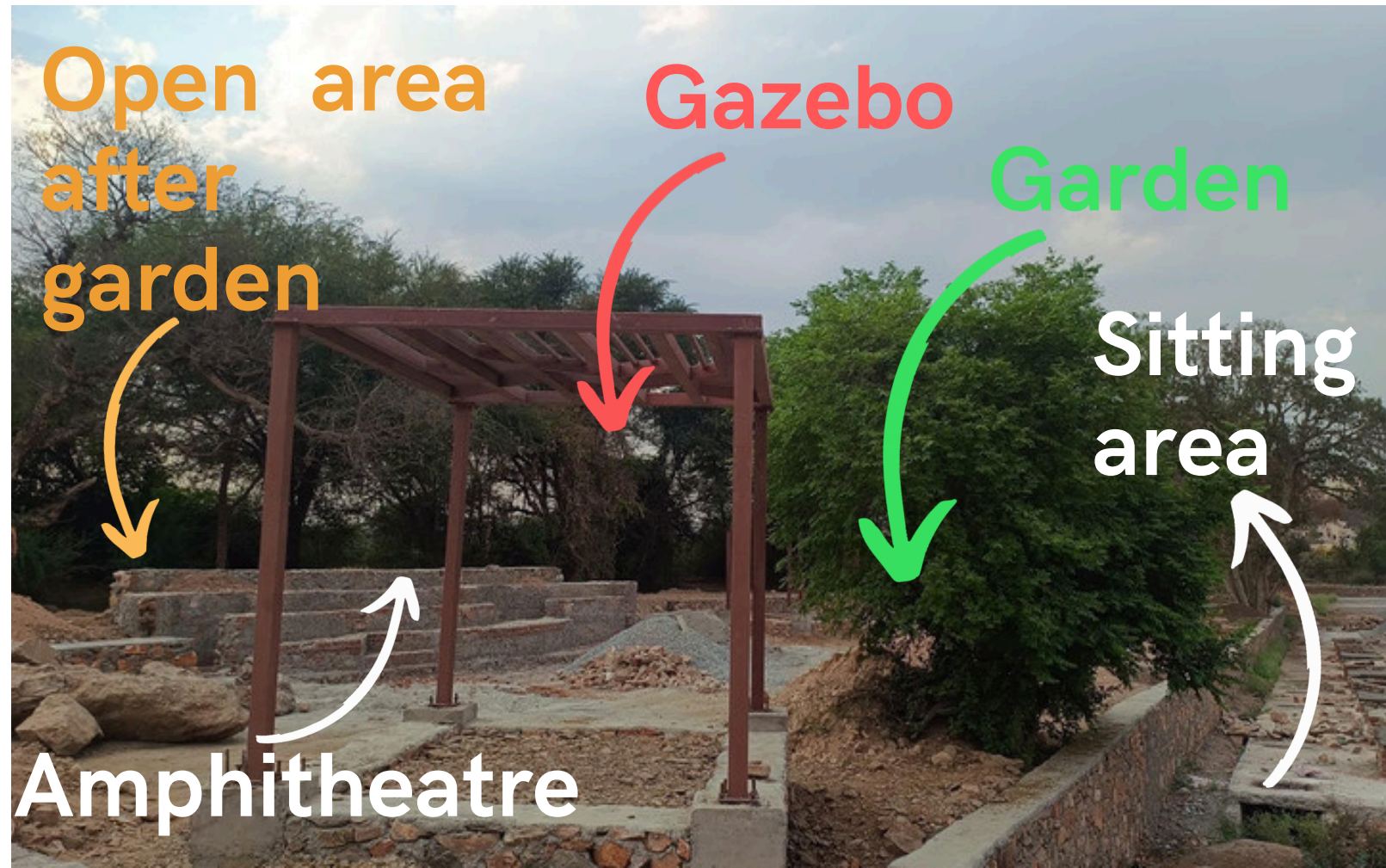


MAJOR LOCATIONS

- **Mall : 8.3 km**
- **Udaipole, surajpole, bapu bazar, townhall (city area) : 6-7 km**
- **Jogi talab lake, Goverdhan sagar lake, Fatehsagar lake, city palace and various tourist places : 3-12 km**



Site Photos



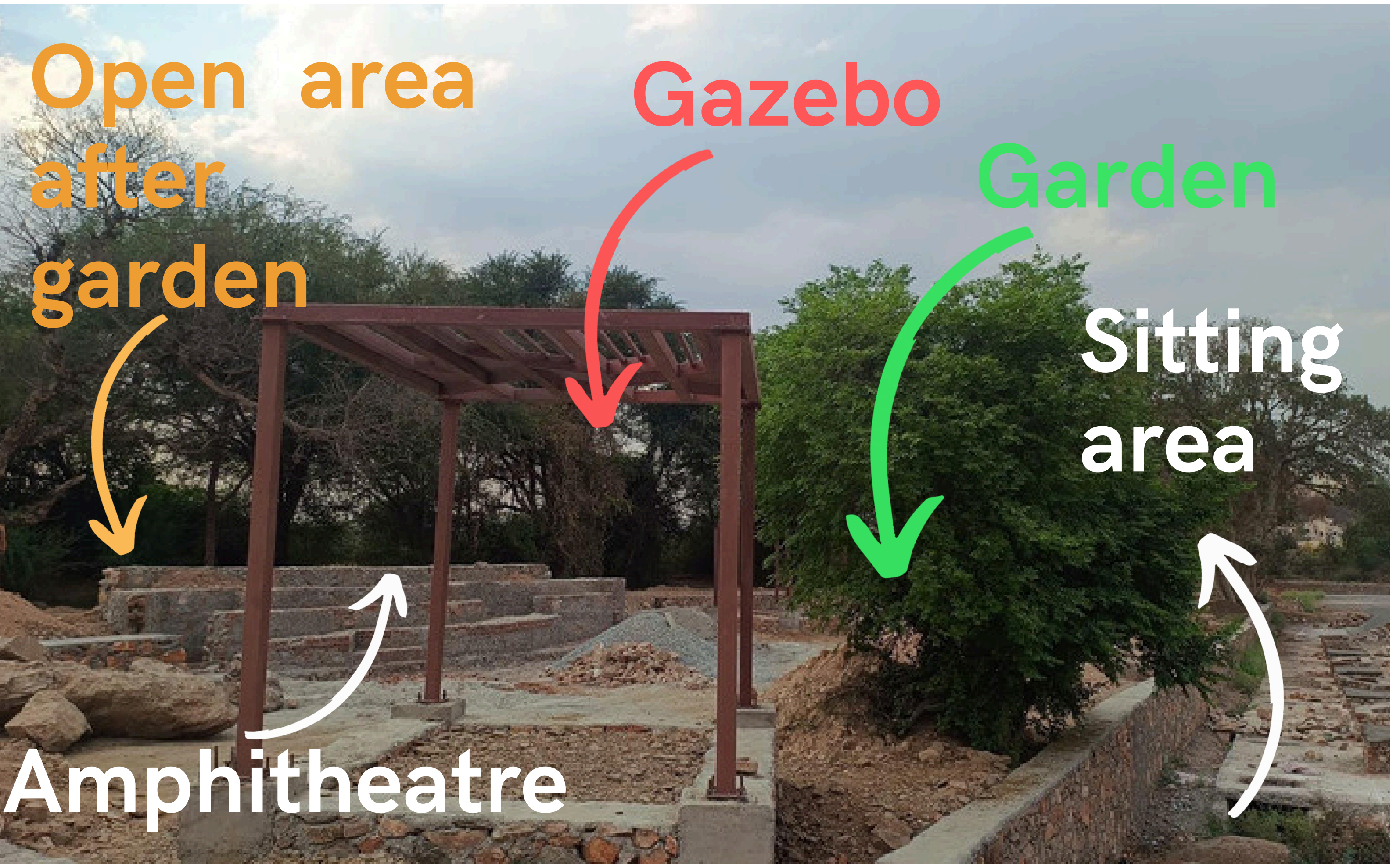
Open area
after
garden

Gazebo

Garden

Sitting
area

Amphitheatre



Site Photos



Garden with 3 gazebos



Sitting area on footpath, garden



GARDEN LAYOUT



Gated society with cameras



Footpath with sitting area, jogging track



All play court



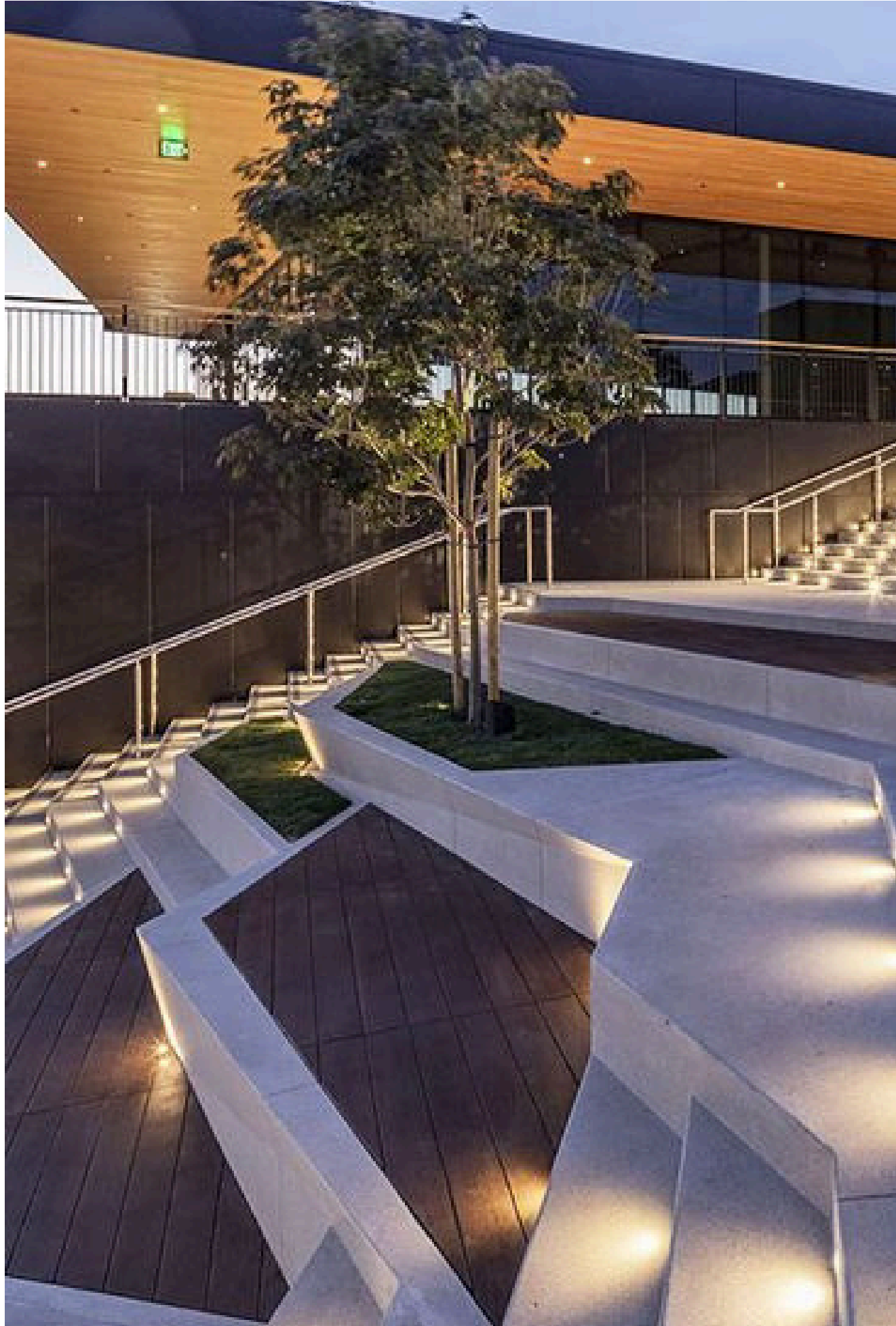
3 Gazebo / pergola with trees



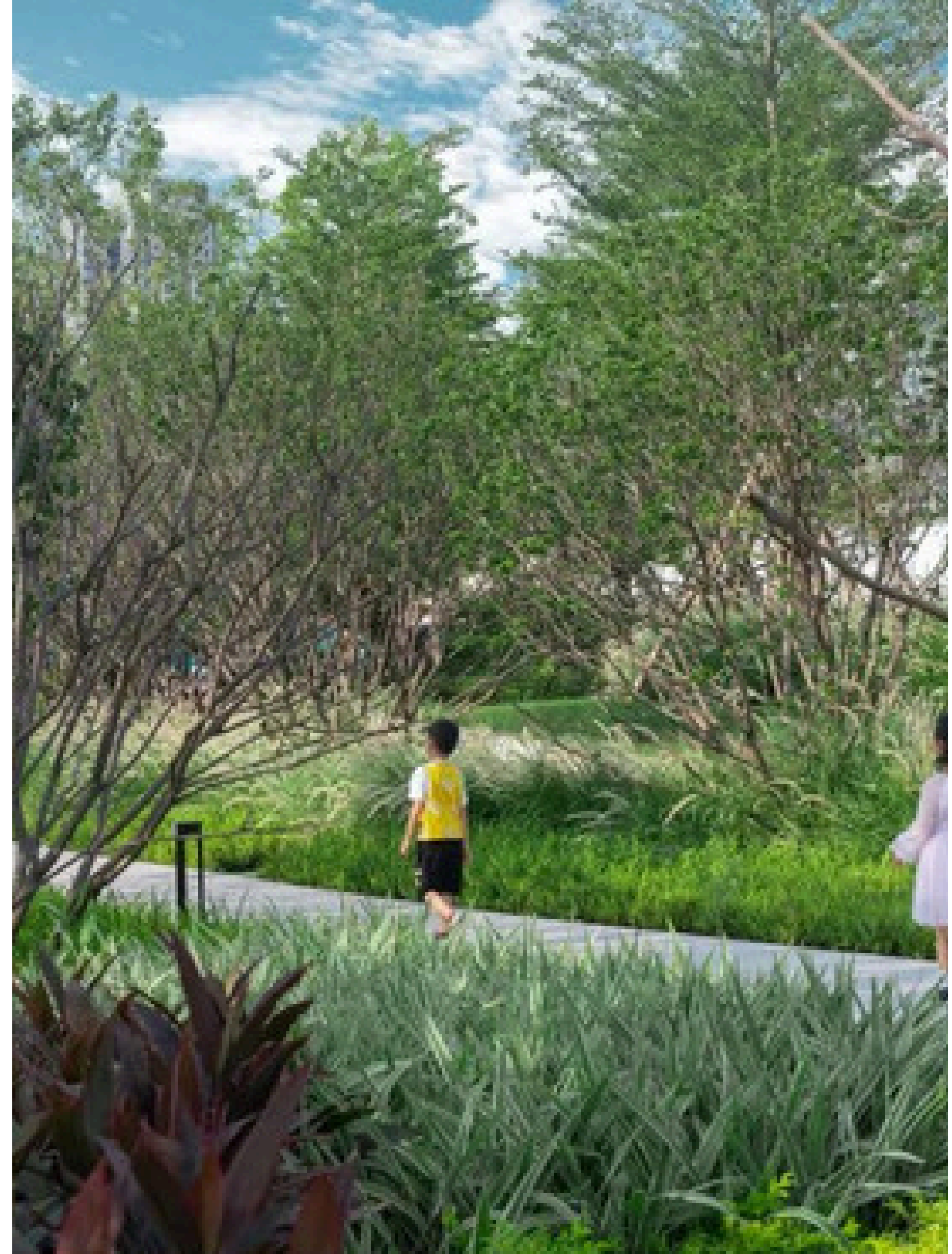
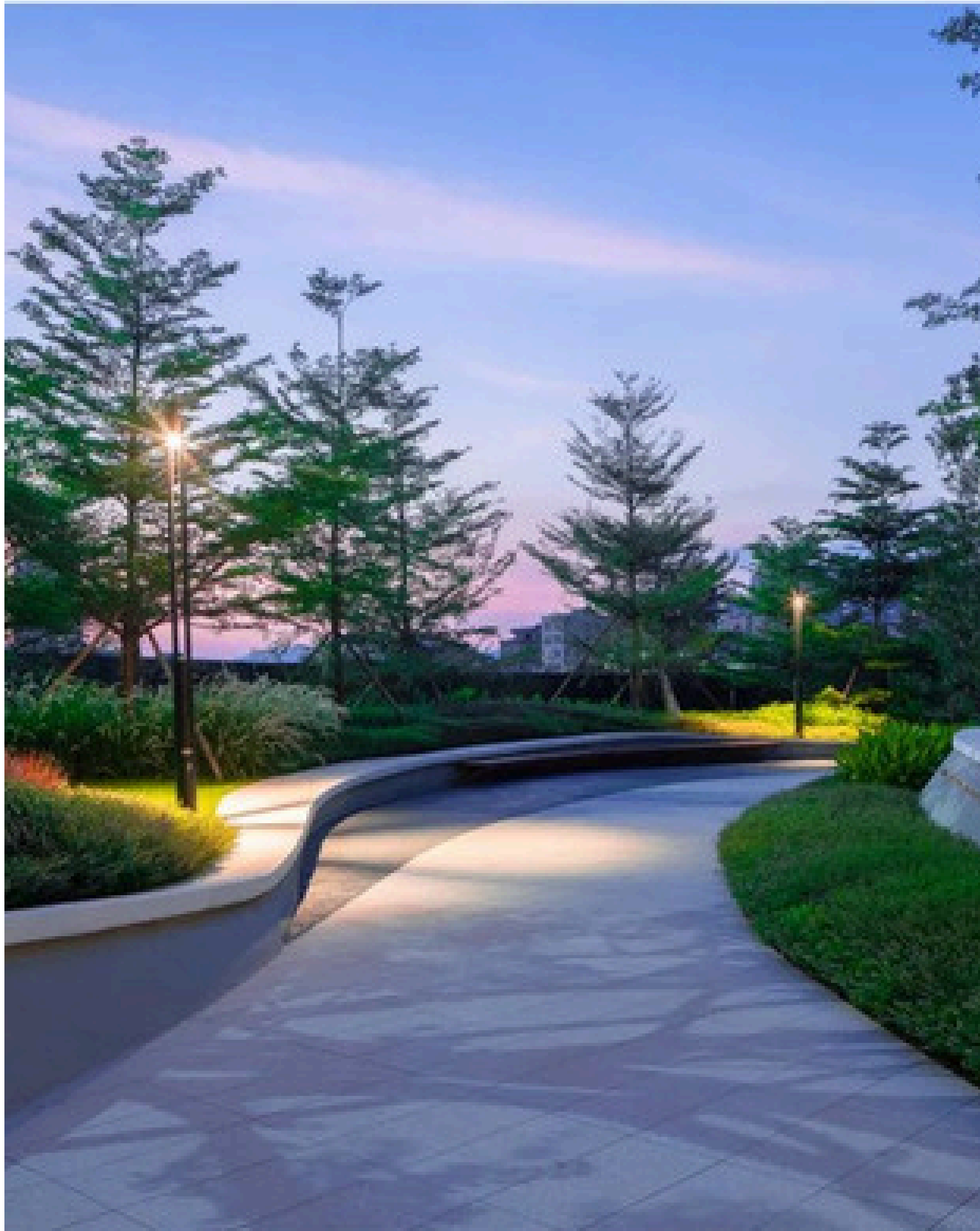
4 Types of Garden



Amphitheatre



Pathway / cycling track



Kids playing / Workout area



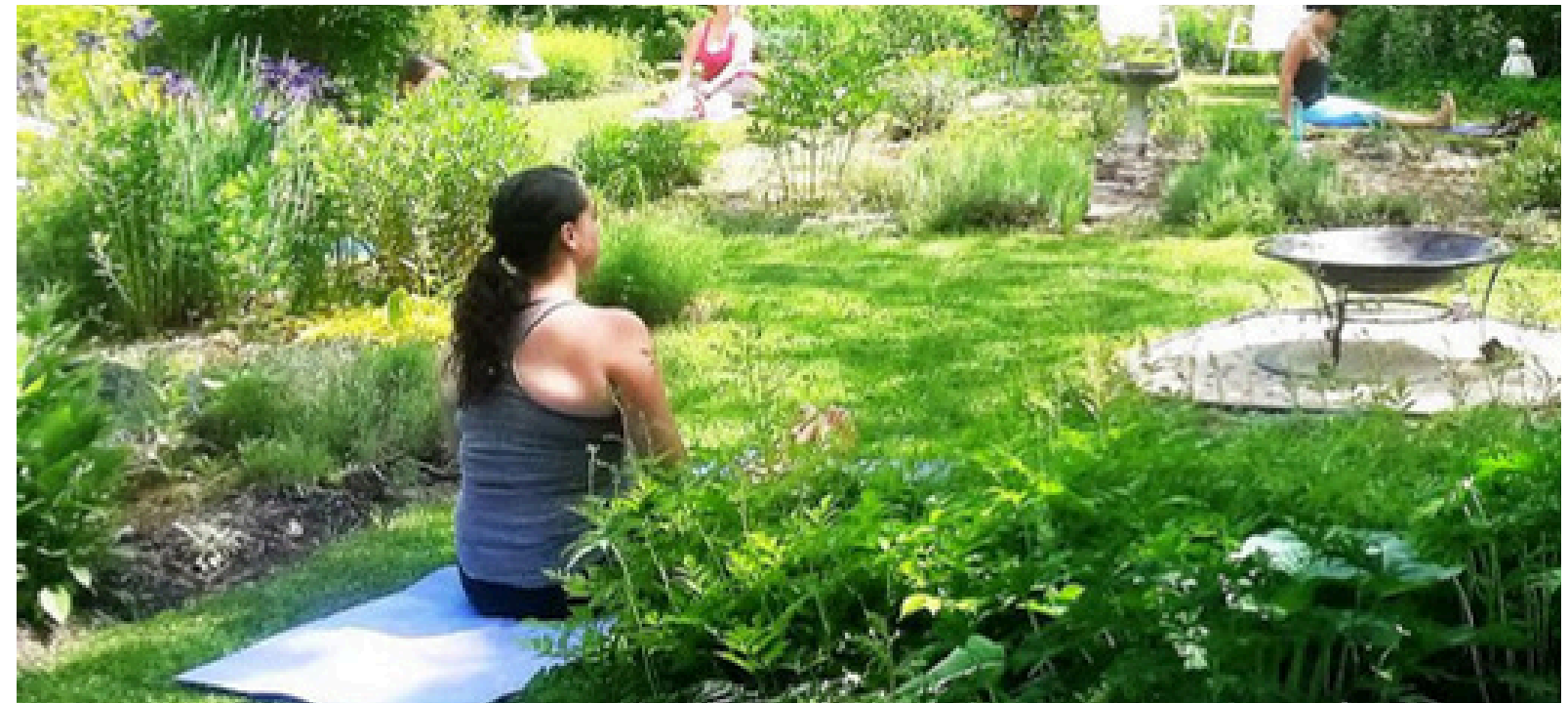
Garden -1 (Party lawn) with gazebo



Garden-2 with gazebo



Garden-3 for yoga with gazebo



Garden-4 with well , vastu trees



Plots plantation



Mountain, garden and nature view



Footpath, street lights & plantation



QR CODE



SITE PHOTOS



SITE LOCATION

ONLINE PRESENCE

Sanguine properties pvt ltd



WEBSITE

Sanguineproperties.in



FACEBOOK

[Sanguine properties](https://www.facebook.com/Sanguineproperties)



INSTAGRAM

[Sanguineproperties](https://www.instagram.com/Sanguineproperties)

CONTACT US

FOR BOOKING CONTACT :

Arjun Suthar
Aman Suthar
Abhi Suthar

9269499999
9672199999
9261990009

WEBSITE :

www.sanguineproperties.in

SITE ADDRESS :

Near Hira Bavdi, behind Sarvodaya nagar, Fanda link road, Titardi, udaipur

PROJECT BY:



Sanguine Properties Private Limited