



VRAJ

TIARA

LIVE THE LIMELIGHT

WORLI

**A CLASSIC
DEFINITION OF
A LEGACY THAT
STAYS RELEVANT
WITH CHANGING
TIMES, VRAJ TIARA
IS DESIGNED TO BE
TIMELESS.**

Behind the gates of Vraj Tiara, we are building a world that whisks you away into a land of never before experiences. A journey of self-indulgence, with every conceivable luxury made available to you.

An exclusive 39 storey stand-alone residential tower, Vraj Tiara is a reminiscence of the vertical villas that overlook the Arabian sea with a classic mix of old-world charm with modern marvels of living.





*Artist's Impression

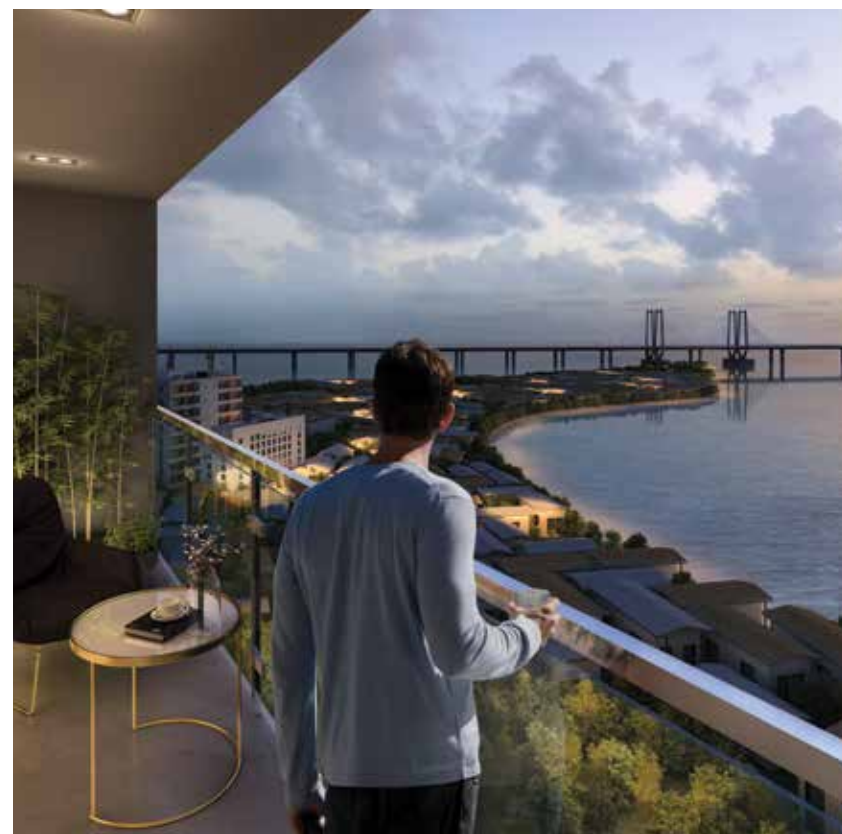


*Actual Image

CURATED MANSIONS FOR LUXURY LIVING

Vraj Tiara homes are just what you deserve – opulent mansions of sophisticated lifestyle fit for the Urban Royals of ‘Bombay’.

A panoramic vista of endless sea views with balconies and large spaces that gives a majestic grandeur to your lifestyle. The rarest experience that moves beyond compare is the spell binding view from your vertical villas. Enjoy the feeling of ruling over the city skyline, while you sip your morning coffee.



HOMES THAT BECOME PART OF YOUR LEGACY

Arrive in style as the grandeur of the old charm of the city whisks you away to elegant living with a warm welcome at the grand entrance lobby facilitated with concierge service and a beautiful art gallery that connects you instantly to the old charm of Mumbai.

A spectacular lobby that leaves your guests in awe.



SPACIOUS



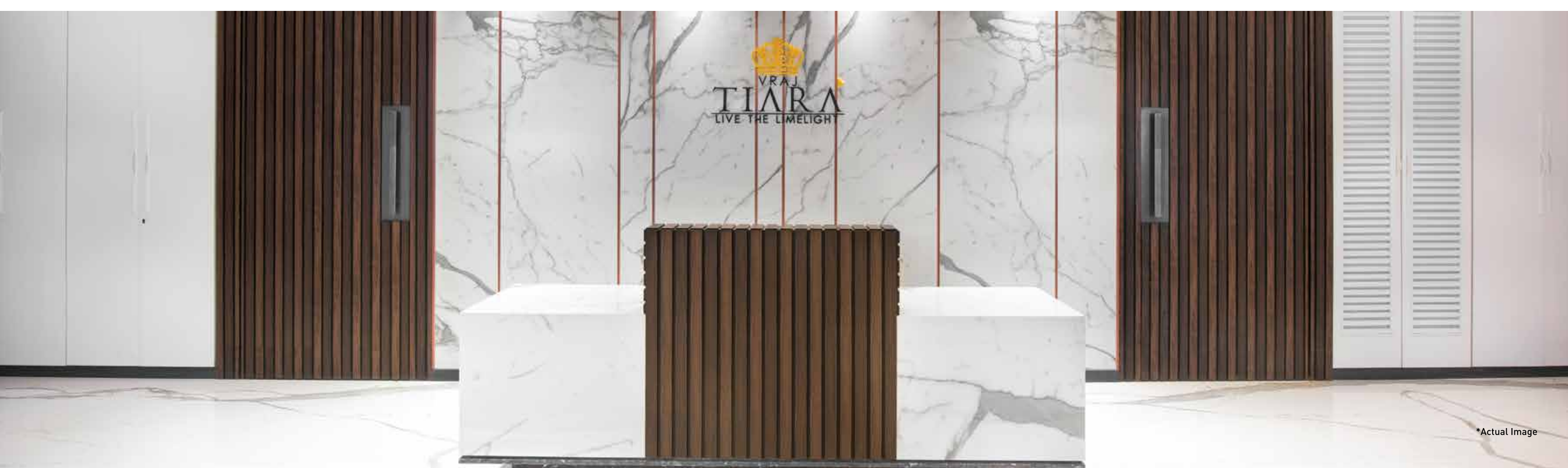
270° SEA VIEW



MORE NATURAL LIGHT



VASTU COMPLAINT





LIVING ROOM



MASTER BEDROOM



KITCHEN



*Artist's Impression

WASHROOM



WHEN YOU TRAIN TO GAIN, WITH A VIEW

Make fitness a part of your daily life with spacious Hi-Tech Gym on 24th floor with a panoramic sea view.

MAKE IT HAPPEN

TERRACE AMENITIES

- BARBEQUE AREA
- MINI GOLF PLAY AREA
- STAR GAZING AREA
- CAFETERIA/ LOUNGE AREA
- KIDS PLAY AREA



*Artist's Impression

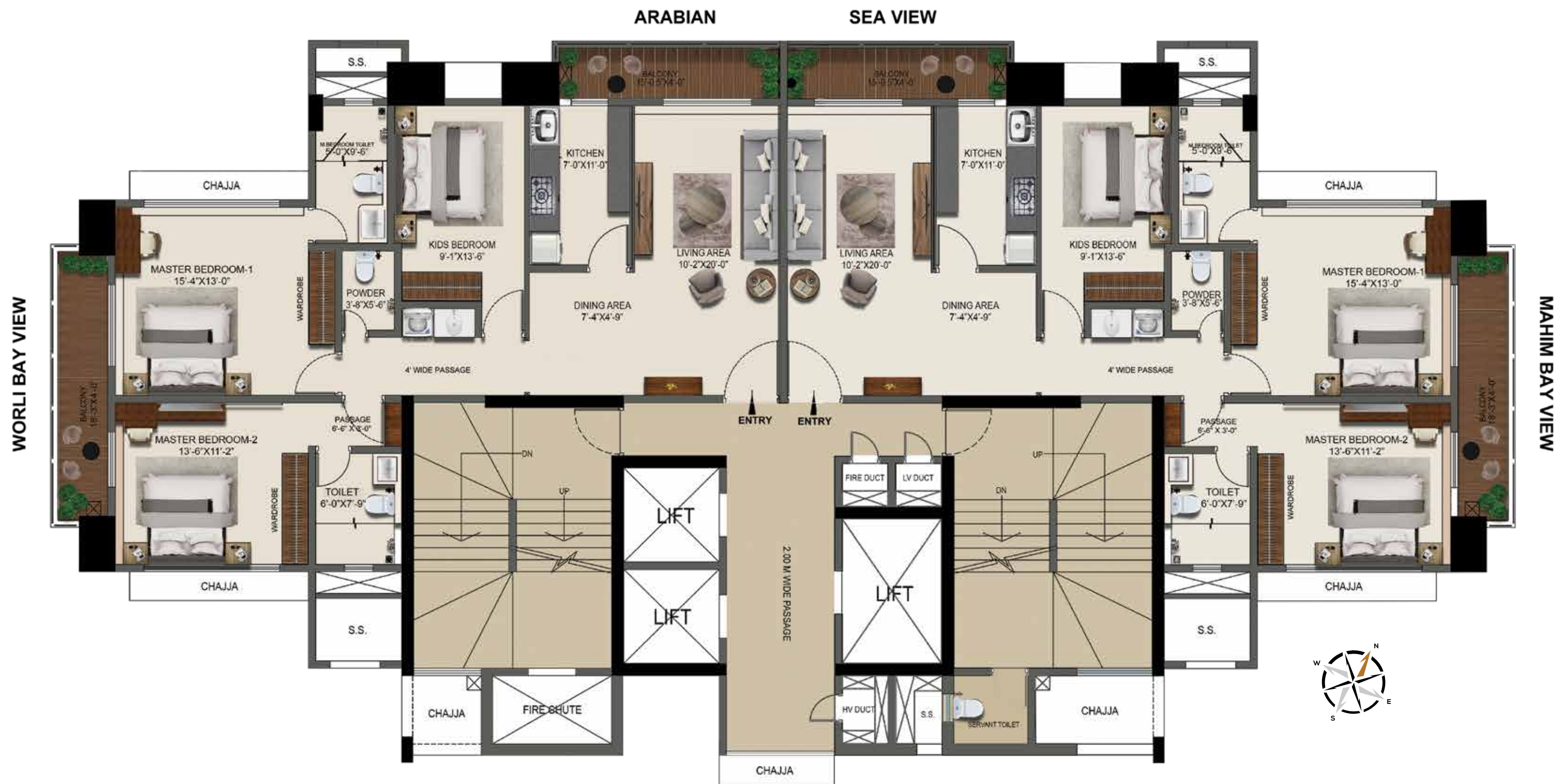
FLOOR PLAN

3 BHK

1160 Sq. ft.

RERA Carpet

21STFLOOR ONWARDS

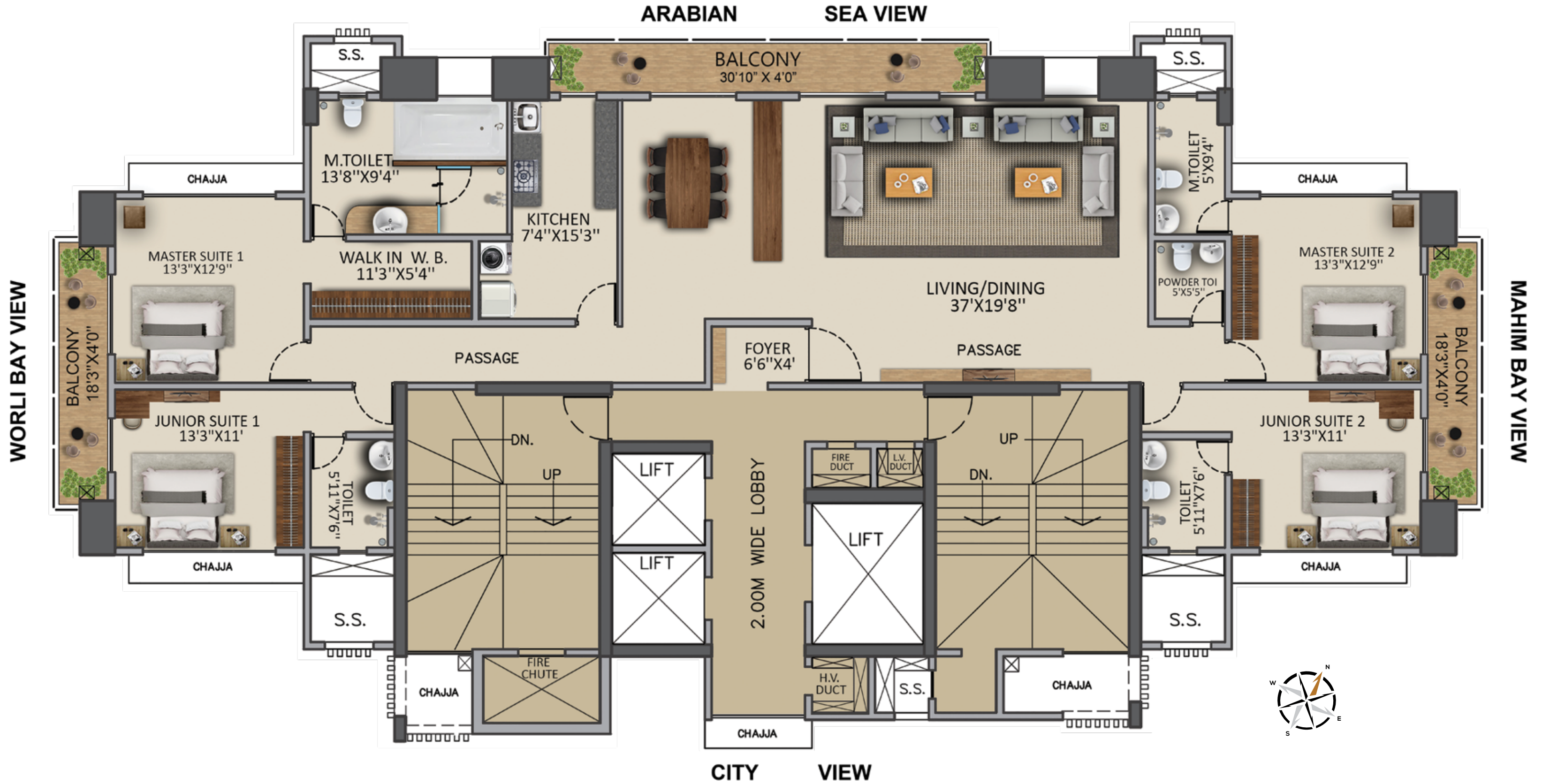


FLOOR PLAN

4 BHK

2320 Sq. ft.

RERA Carpet



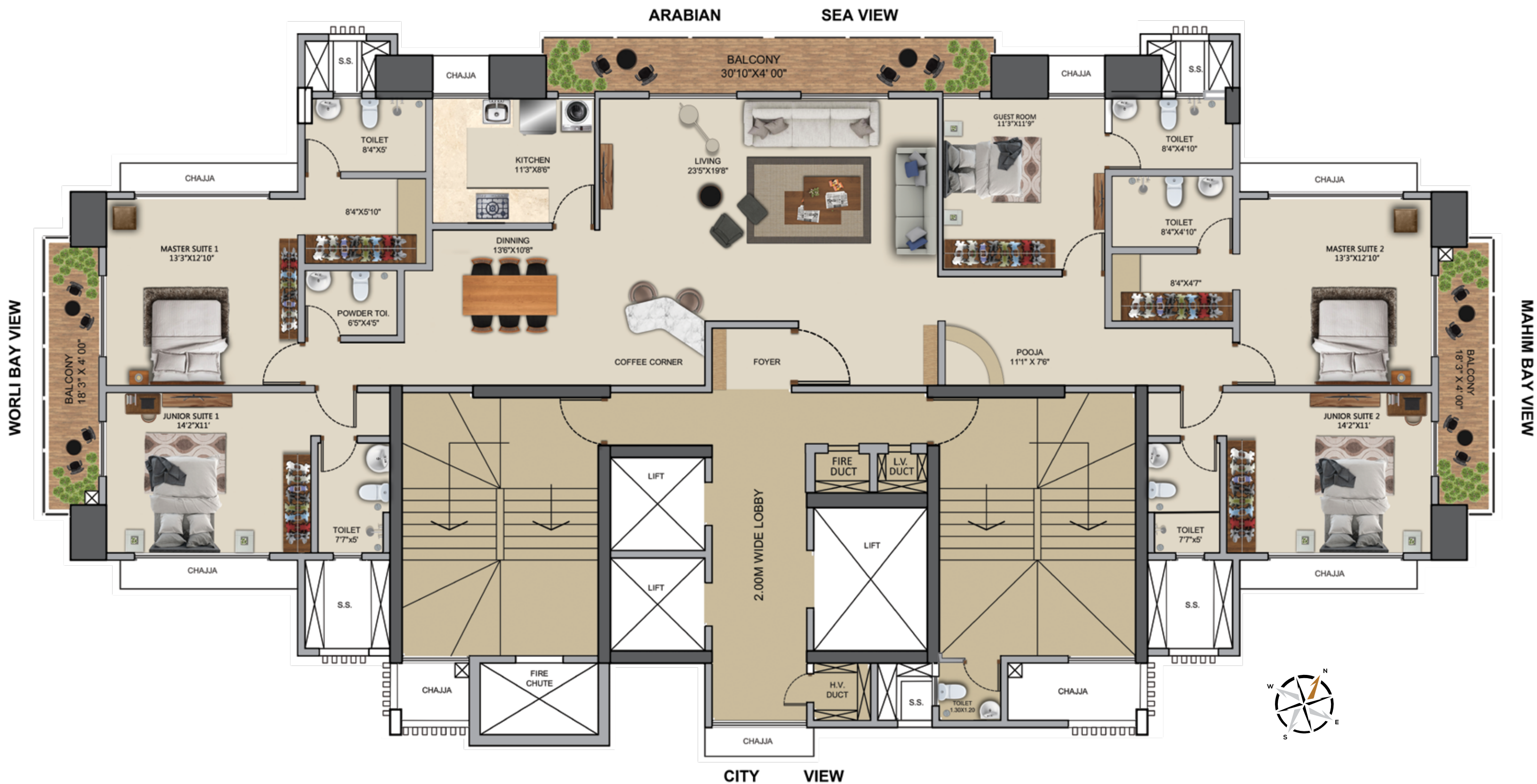
FLOOR PLAN

5 BHK

2320 Sq. ft.

RERA Carpet

COMBINED FLAT OPTION





REVEL IN A ROYAL CAMARADERIE FOR A LIFETIME

What if, everytime you go home felt like a red carpet entry!

Celebrate homes that pamper you with the perfect blend of luxury and serenity.

PROJECT FEATURES

- Living spaces of 3 / 4 / 5 BHK, 220 ft above Ground Level
- 270° sea view from every home with balcony
- Only 2 Apartments per Floor for Exclusivity Availability of option to combine apartments into one
- Bare-shell Apartments for customization
- Clear height 10.5 ft
- Magnificent views from the living room, dining room, as well as each of the bedrooms
- Design guided by Vastu principles
- French windows for maximum natural light penetration and cross ventilation
- Elegant & Grand Entrance Lobby & Art Gallery in Wait Areas
- 8 Level Ramp Parking
- High Speed Elevators
- Bell Desk | Concierge Services | 24×7 security with CCTV Surveillance



WHERE JOURNEYS ARE ONLY TO ARRIVE FASHIONABLY

- 10 minutes drive to Bandra Worli Sea Link.
- 5 minutes from proposed metro station.
- Few minutes from arterial Annie Besant Road.
- Located very close to education institutes like D Y Patil International School, Our Lady of Salvation School, ORT, Green Lawns School, Sasmira Institute, RA Podar Medical College, L.S Raheja College School of Art.
- Health Care facilities: Podar Hospital, Metropolis etc.
- 25 mins from Domestic Airport.
- 30 mins from International Airport.
- Close to worship places like Siddhivinayak Temple, Sacred Heart Chapel, Haji Ali etc.
- Very close to recreational areas like NSCI Cub, Worli Sports Club, Mahalaxmi Race Course etc.
- Close to convenience & essentials like Nature's Basket, Rakhangi Stores, Croma, Atria Mall etc.



VRAJ
TIARA
LIVE THE LIMELIGHT
WORLI



Head Office: 98, Princess Street, 1st Floor, Mansoor Building, Mumbai - 400 002.
Site Address: Bldg. No. 17, Adarsh Nagar, Worli, Mumbai- 400025.

☎ +91 99300 96909 ✉ realestate1@vrajindia.com 🌐 www.vrajtiara.com

Disclaimer: The designs, photographs, elevation are proposed and tentative. The complete plans are in the process of being approved. This has a tentative idea and images of the proposed construction. This printed material does not constitute an offer, an invitation to an offer and/or commitment of any nature between the developer and the recipient. 3d images are given for a better understanding and perspective to the customer. The advertising and publicity material include artist's impressions indicating the anticipated appearance of the development. No warranty is given that the completed development will comply in any degree with such artist's impressions. The Management reserves the right to alter, amend and vary the layout, plans, specifications or features.

The project has been registered via MahaRERA Registration No.: P51900002902 and is available on the website <https://maharera.mahaonline.gov.in> under registered projects. Project Financed By Bank Of Baroda