

RERA No.: RAJ/P/2022/2299
www.rera.rajasthan.gov.in



ELITE
Builders & Developers



ELITE 24

3 & 4 BHK Residential Apartments

A rare gem, exclusively yours

Life with limited-edition
luxury, exclusively yours

The beginning of an
elite lifestyle...

24 3 / 4 BHK
RESIDENTIAL
UNITS

GYMNASIUM

ENTRANCE LOBBY

YOGA MEDITATION DECK

MULTIPURPOSE HALL

KID'S PLAY AREA

INDOOR GAMES

TERRACE GARDEN

HOME THEATRE





ELITE 24



An elegant shining glory of Mansarovar, exclusively yours

Welcome to Elite 24 that is located in a sought-after location of Mansarovar that offers a vibrant and coveted neighborhood. Here, you'll find yourself surrounded by a tapestry of luxury, culture, and convenience.



Exquisitely crafted with sublime luxury, exclusively yours

From the moment you enter, you'll be captivated by the grandeur of the soaring ceilings, the exquisite finishes, and the seamless integration of modern technology. Every aspect of our design has been thoughtfully curated to elevate your living experience to new heights.

Unravel the pleasures of our amenities, exclusively yours

Designed to surpass your every expectation, our meticulously curated offerings redefine the meaning of elevated living. The exclusive gymnasium, lobby, landscape terrace, home theater, indoor games, and multipurpose hall are designed so that your every desire will be met with unparalleled attention to detail.



3BHK Interior

These apartments, which have been thoughtfully designed and precisely created, provide the ideal blend of elegance, space, and utility. These apartments are a haven of peace and luxury, with panoramic views of the cityscape. Immerse yourself in an exclusive and refined lifestyle in our excellent **3 BHK** flats, where every detail has been created to exceed your expectations.



BEDROOM



LIVING ROOM



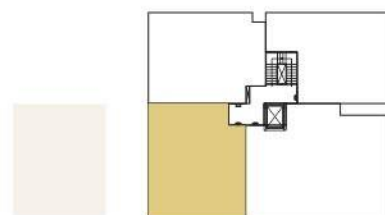
DINING ROOM



KITCHEN

3BHK Unit Plan

Type-1
Flat No. 102



Saleable Area 1850 Sq. ft. | Built-up Area 1370 Sq. ft. | Carpet Area 1163.80 Sq. ft.

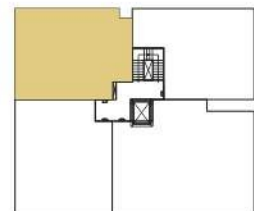
3BHK Unit Plan

Type-2
Flat No. 103

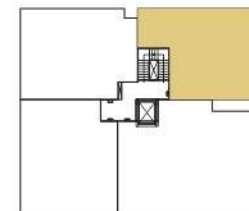
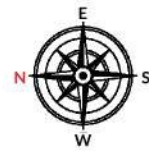


3BHK Unit Plan

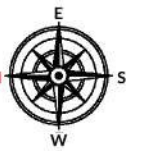
Type-3
Flat No. 104



Saleable Area 1744 Sq. ft. | Built-up Area 1292 Sq. ft. | Carpet Area 1060.86 Sq. ft.



Saleable Area 1623 Sq. ft. | Built-up Area 1202 Sq. ft. | Carpet Area 1028.95 Sq. ft.



4BHK Interior

These residences embody richness and elegance for individuals who want the finest things in life. The expansive living spaces are great for entertaining, while the luxurious bedrooms provide seclusion, luxury, and tranquil views. Our premium 4 BHK apartments provide the best in elegance and refinement, with every detail thoughtfully tailored to create an exceptional living experience.



BEDROOM



LIVING ROOM



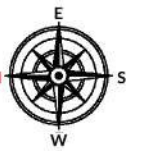
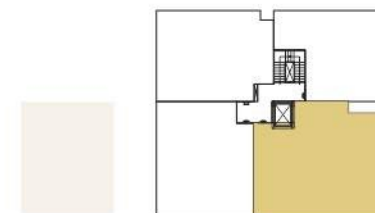
DINING ROOM



KITCHEN

4BHK Unit Plan

Flat No. 101



Saleable Area 2534 Sq. ft. | Built-up Area 1877 Sq. ft. | Carpet Area 1616.07 Sq. ft.



STILT FLOOR PLAN



TYPICAL FLOOR PLAN

Unit No.	Flat Type	Saleable Area	Builtup Area	Carpets Area
101	4 BHK	2534	1877	1616.07
102	3 BHK Type-1	1850	1370	1163.80
103	3 BHK Type-2	1744	1292	1060.86
104	3 BHK Type-3	1623	1202	1028.95



FEATURES & FACILITIES

PROJECT HIGHLIGHTS

- JDA Approved
- Earthquake Resistant Framed Structure Design As Per Seismic Zone-II
- Vastu Friendly
- Neo Classical Elevation Design
- High End Grand Lobby
- Double Height Stilt Floor
- Basement for Ample Facilities
- Provision For EV Charging Point
- 100% Power Back-up for Apartments Except AC and Gyser
- 100% Power Back-up for Common Areas & Club House
- Society Office

APARTMENTS

- Digital Vitrified Tiles Flooring
- Laminated Flush Door having matching shade with wooden door frame
- High Quality Acrylic Emulsion Paint on Internal Walls
- Car Parking
- Provision of Piped Natural Gas
- MDU Enabled (DTH)
- Copper Tubing for Air-Conditioning
- KONE Lift
- Separate Servant/store Room in Basement

CLUB HOUSE

- Multipurpose Hall
- Gymnasium
- Indoor Games Area
- Yoga Deck
- Table Tennis
- Home Theatre

WATER SUPPLY

- 24 Hours Water Supply Through Own Tube Well
- Rain Water Harvesting System
- Underground Water Tank for Additional Storage
- Provision for Bisalpur water supply



BEDROOM

- POP Finish Walls and Ceiling
- High Quality Acrylic Emulsion Paint
- 7'-0" Laminated Flush Door matching shade with Wooden Door Frame
- High Quality Three Track UPVC /Aluminium Windows
- Premium door fittings

FIVE TIER SECURITY SYSTEM

- Secured Gated Community with Access Control at Building
- CCTV Surveillance in All Common Area
- Guard Room

EXTERNAL AMENITIES

- Roof Top Party Terrace
- Kids Play Area
- Yoga/Meditation
- Lush Plantation

ELECTRICAL

- Premium Quality Wires & Cables of RR
- Premium Quality Modular Switches & Accessories of Honeywell/RR or Equivalent
- Automatic Changeover
- State of the Art Electrical System / Circuit Breaker

TOILETS

- Premium Quality Digital Wall Tiles upto Full Height
- Premium Single Lever C.P. Fitting of Jaquar/Grohe or Equivalent
- Designer Over/Under Counter Wash Basin With Granite Top
- Premium Quality Sanitary Wares of Jaquar or Equivalent
- Grid False Ceiling

KITCHEN

- Elegant Kitchen
- Granite Designer Counter top and Wall Tile Dado
- Modular Kitchen with Innotech Drawers



About Us

Elite Builders & Developers is a prominent real estate company with over 15 years of experience in the industry. Throughout our journey, we have established ourselves as a trusted name in the market, known for delivering high-quality projects and exceptional customer service.

Our team at Elite Builders & Developers comprises seasoned professionals who bring a wealth of knowledge and expertise to every project we undertake. We are committed to creating innovative and sustainable developments that meet the needs and aspirations of our clients.

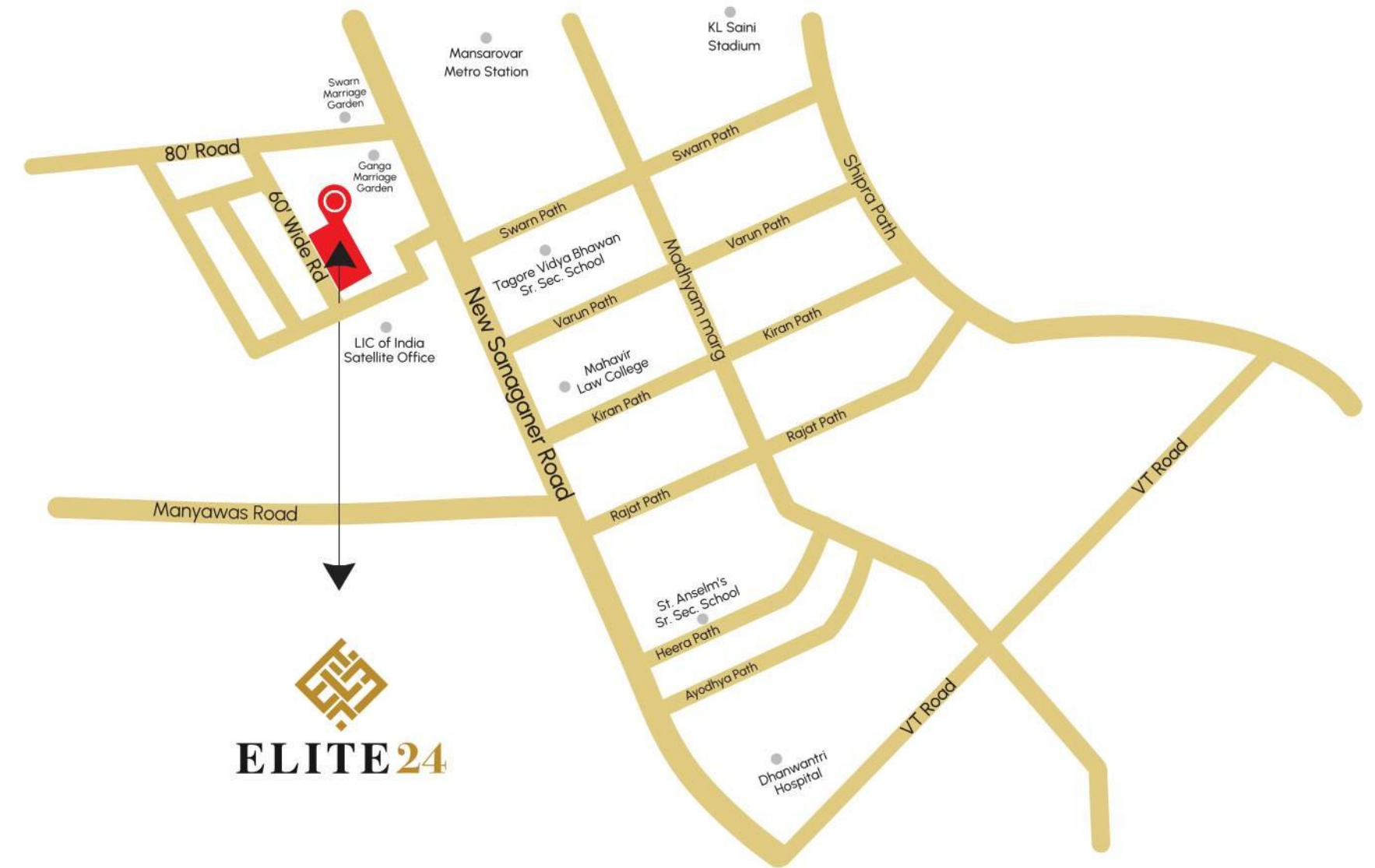
Customer satisfaction is at the core of our business philosophy. We strive to exceed expectations by delivering projects on time and within budget, while maintaining the highest standards of quality. Our commitment to transparent communication and personalized service has earned us a loyal clientele and numerous referrals.



Villa Royale 1
Villas at Sitabaari, Tonk Road



Villa Royale 2
Villas at Sukhija Vihar, Gandhi Path West



Site : Plot No. A-46, 47, 6D, Engineer's Colony, New Sanganer Road, Manyawas, Jaipur-302020

Iconic Landmarks

DISTANCE CHART

EDUCATION

- Tagore Public School 1 Min
- Neerja Modi School 6 Min
- IIS School 6 min
- Modern School 7 min
- Ryan International School 6 min
- VIS School 2 min
- Cambridge Court World School 5 min
- Maharishi Arvind Institute of Engineering & Technology 6 min

HEALTH

- Amar Jain Hospital 3 min
- Tagore Hospital 7 min
- Dhanwantri Hospital 4 min
- Saket Hospital 6 min
- ManglamPlus Medicity 6 min
- HCG Hospital 5 min
- Metro Mas Hospital 6 min
- Indus Jaipur Hospital 6 min
- R.A.G Hospital 6 min

ENTERTAINMENT

- Inox 5 min
- The Galaxy 12 min
- First Cinema 15 min
- Miraj Cinema (EP) 14 min
- Inox GT Central 18 min
- Cinepolis 18 min
- CityPark 7 min
- Technology Park 5 min
- Jaipur Chaupati 10 min
- FunKingdom 13 min

LIFESTYLE

- Sunny Trade Center 5 min
- Jaipur Center 13 min
- Mansarovar Plaza 8 min
- World Trade Park 18 min
- GT. Mall 18 min
- Metro Station 3 min
- Airport 15 min
- Railway Station 14 min

Scan QR Code for Location





ELITE
Builders & Developers

Elite Builders & Developers

507 Signature Tower, Lalkothi Tonk Road, Jaipur 302015
E-mail : elitebuildersanddeveloper@gmail.com

Interior and Landscape Architect:



Call for More Details :

9928008044
9351517777

Disclaimer : This brochure is purely conceptual and is not a legal offering, nor will it be part of any binding document. All furnishing shown on all floor plans are for illustrative purposes only. The developer reserves the sole rights to amend the number of floors, number of units, layout, plans, elevation, colour schemes, specifications and amenities etc. without prior notice. All dimensions are approximate and subject to construction variances and approvals.