

# DE LUXE-DXP

AN EXPRESSWAY OF REALTY



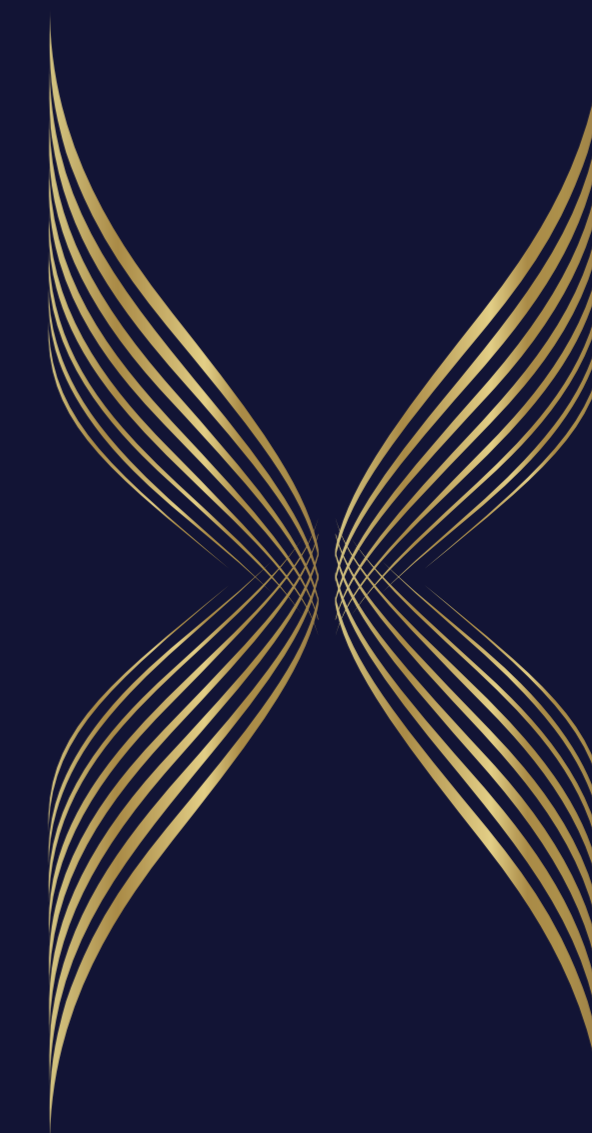
SIGNATUREGLOBAL BUSINESS PARK PRIVATE LIMITED | CIN NO.: U70109DL2019PTC346164  
Regd. Off: 13<sup>th</sup> Floor, Dr. Gopal Das Bhawan, 28, Barakhamba Road, Connaught Place, New Delhi - 110001  
Corp. Off.: Ground Floor, Tower A, Signature Towers, South City 1, Gurugram, Haryana - 122002  
[www.signatureglobal.in](http://www.signatureglobal.in)

Disclaimer :

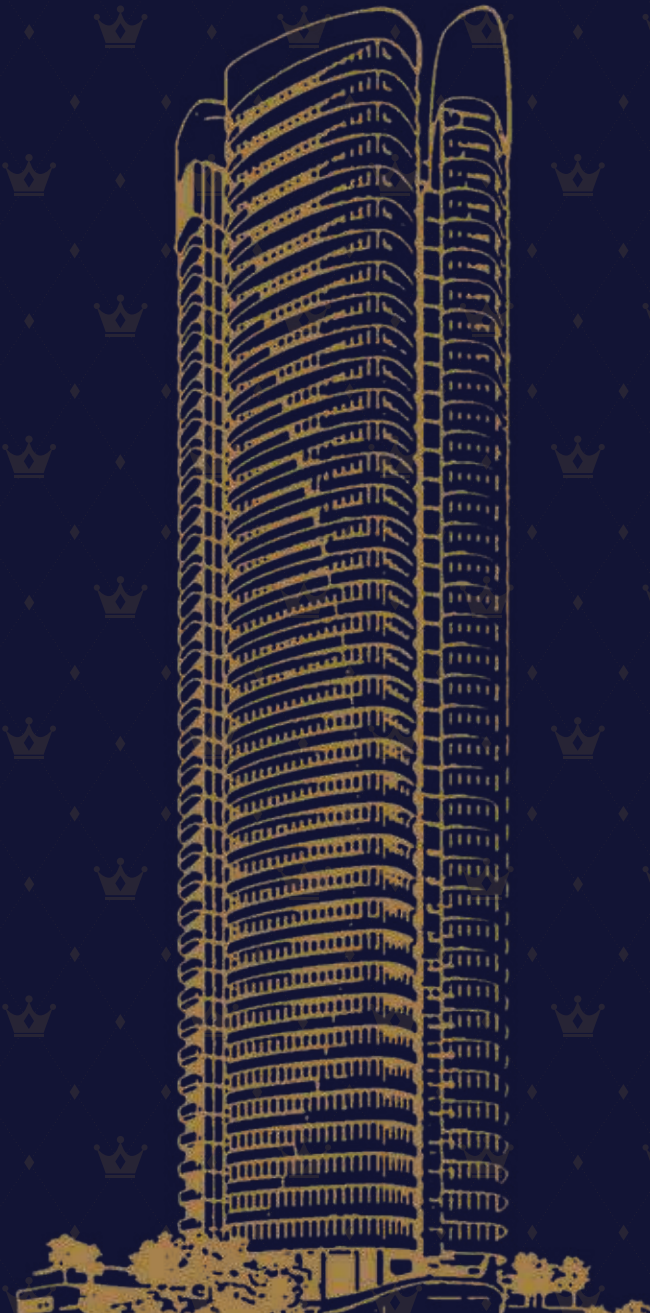
Promoter urges every applicant to inspect the project site and shall not merely rely upon or to be influenced by any architectural impression, plan or sales brochure and, therefore, requested to make personal judgment prior to submitting an application for allotment. The Project is being developed in phases, hence, certain facilities/amenities etc, may be used by allottee of other phases. Unless otherwise stated, all the images, visuals, material and information contained herein are purely creative/artistic and may not be actual representations of any products and/or amenities. Further, the actual design may vary in the fit and finished form, from the one displayed above. Project details / specifications can also be accessed at the office of Haryana Real Estate Regulatory Authority website <https://haryanarera.gov.in/>. Journey time shown, if any, is based upon Google Maps, which may vary as per the traffic at a relevant point of time.

The dimensions specified are inclusive of wall-to-wall measurements, excluding finishing margins. Potential offsets within rooms may occur due to structural elements.

Rate mentioned does not include GST and other statutory charges, if applicable. T & C Apply. "1 Sq. mt = 10.7639 sq. ft."



AN EXPRESSWAY OF REALTY



THE HIGH LIFE.....



**SCHOOLS**

- Suncity School - 2 KM
- Delhi Public School - 6.5 KM
- Euro International School - 7.3 KM
- GD Goenka School - 7.5 KM

**HOSPITALS**

- The Signature Advanced - 3.3 KM
- Super Speciality Hospital
- Aarvy Hospital - 6.9 KM
- Medanta - The Medicity - 13 KM
- Fortis Hospital - 17 KM

**SPORTS**

- Heritage Badminton Academy - 5.6 KM
- Nehru Stadium - 9.9 KM
- Rezang La Shoooting Sports Academy - 10 KM
- Tau Devi Lal Sports Complex - 12 KM

**HOTELS**

- Holiday Inn - 7.2 KM
- Hyatt Regency - 9.8 KM
- Karma Lakelands - 12 KM
- ITC Grand Bharat - 20 KM

**CONNECTIVITY**

- Dwarka Expressway - 0 KM
- Pataudi Road - 2.6 KM
- Railway Station - 6.8 KM
- Hero Honda chowk on NH-8 - 8.2 KM
- Western Peripheral Expressway - 15 KM
- Millennium City Centre Metro - 19 KM
- Cyber Hub - 22 KM
- Airport - 27 KM

LOCATION MAP

Map Shown here is based upon google maps

# HARMONY AND CONNECTIVITY AT YOUR URBAN OASIS.

Embark on a lifestyle where luxury effortlessly intertwines with convenience in this strategically positioned project along Dwarka Expressway. More than a link between Delhi NCR and Gurugram, it's an enclave flourishing with top-notch infrastructure. Our meticulously planned layout offers not just luxurious residences but also a well-connected road network, advanced utilities as well as close proximity to educational institutions, healthcare facilities and commercial hubs. Discover a haven of tranquillity here with high-end construction, excellent amenities, green landscaping and a lifestyle that defines good living.





BANQUET

CLUBHOUSE

CLUBHOUSE

BANQUET

DEVI CITY  
BANGKOK

ENTRANCE OF GRANDEUR.  
A CAPTIVATING PRELUDE TO LUXURY LIVING.

## LIFESTYLE REDEFINED: PODIUM EXTRAVAGANZA UNVEILED



Experience unparalleled luxury living in Gurugram's newest residential gem. Explore the shared podium, home to the exclusive Club Elevate, offering a spa, gym, salon, playrooms and more. Indulge in a resort-like living with eight swimming pools, playgrounds, sports grounds, and outdoor facilities catering to diverse recreational pursuits.

The thoughtful design seamlessly blends nature with modern amenities, creating an idyllic retreat. Enjoy the convenience of Podium-underground parking, ensuring security and ease for residents. This development sets a new standard in sophisticated urban living, promising a harmonious blend of opulence and thoughtful design.

---



# ELEVATE LIVING. FEATURES FOR A MODERN LIFESTYLE.



The residential development DE LUXE- DXP in Gurugram, pre-certified with IGBC GOLD, presents a distinctive contemporary design, emphasizing sustainability.





Rolex watches

# ENTER A WORLD OF HIGH-END ARCADE FOR A RELAXING RETAIL EXPERIENCE.

Step into luxury at our high-end retail outlet, spanning 100,000 sq. ft.  
Discover curated collections in an upscale ambiance,  
redefining the shopping experience.

CHANEL

WGXV  
MEXX

DRESS





Multipurpose Hall



Fine Dining



Co-working Space



Kids Outdoor Play Area



Doctors Room/Clinic



Gym



Salon



Laundromat



Mini Theatre



Table Tennis



Conference Room



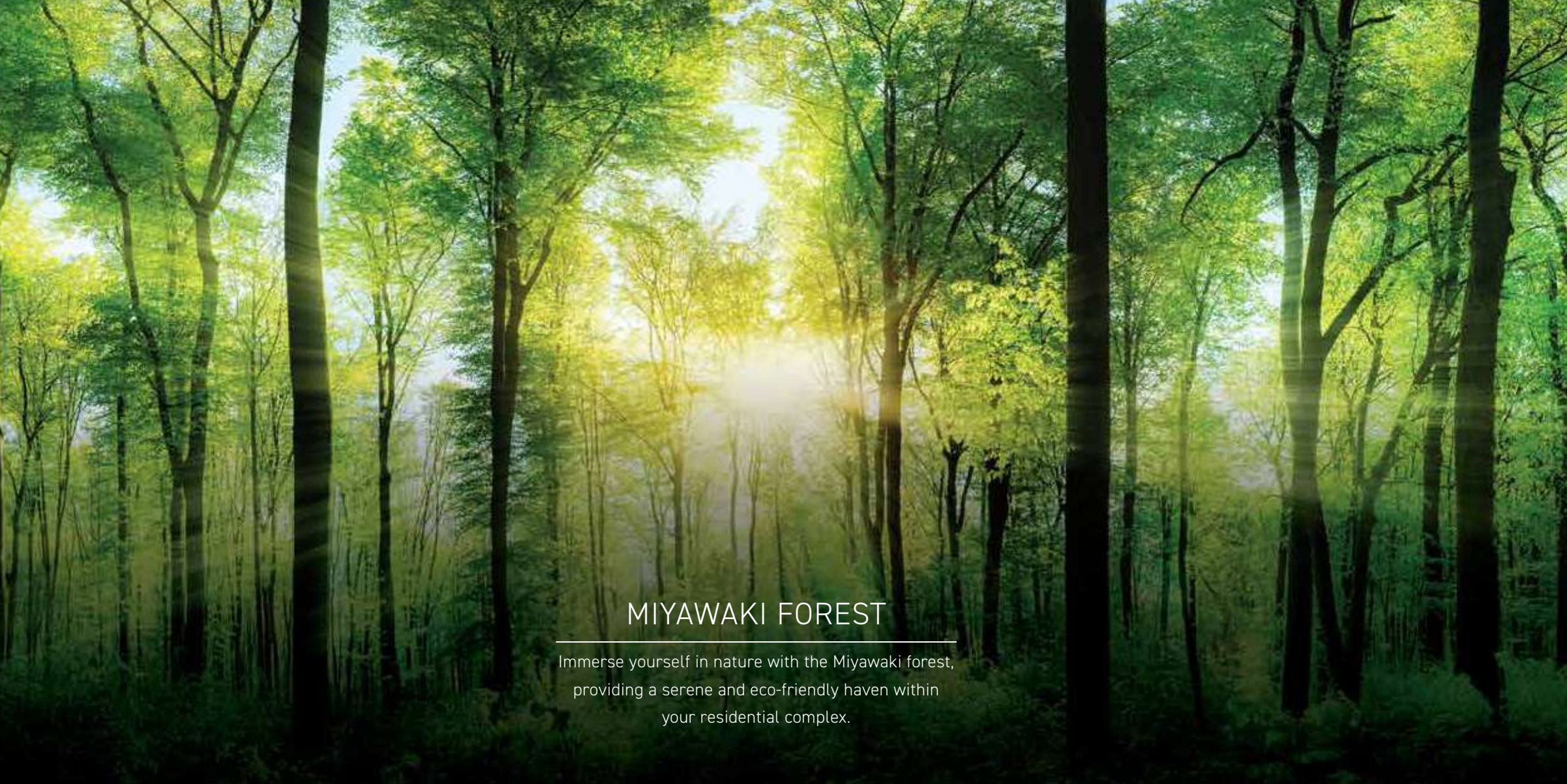
Kids' Indoor Play Area



E-library



SPA



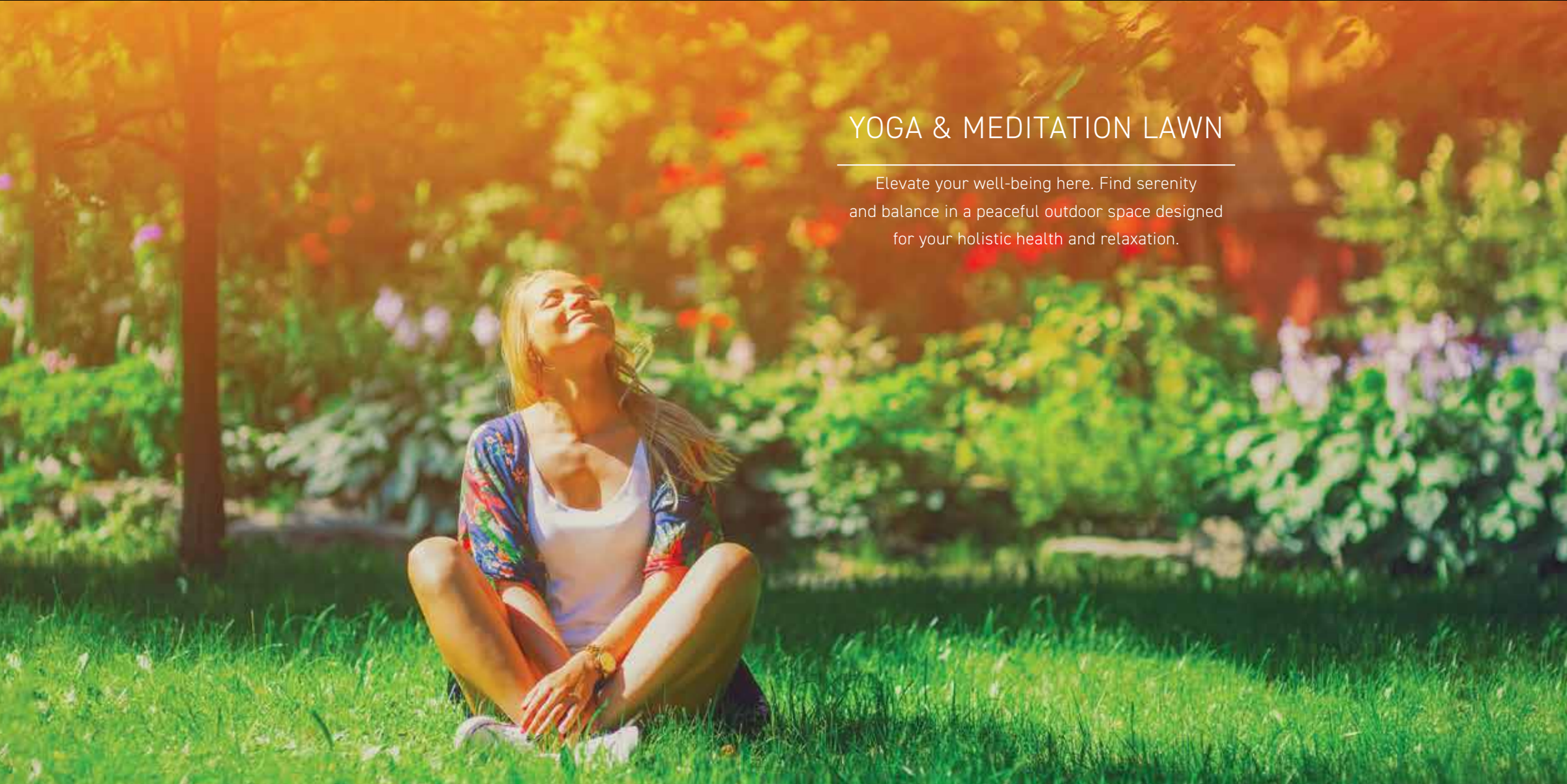
### MIYAWAKI FOREST

Immerse yourself in nature with the Miyawaki forest, providing a serene and eco-friendly haven within your residential complex.



### OPEN PARTY DECK

Celebrate under the sky.  
The perfect venue for unforgettable gatherings and special moments, creating memories that last a lifetime.



### YOGA & MEDITATION LAWN

Elevate your well-being here. Find serenity and balance in a peaceful outdoor space designed for your holistic health and relaxation.



### SENIOR CITIZEN CORNER

Discover tranquility at space built exclusively for the seniors; a serene oasis designed for relaxation and community. Embrace the golden years in comfort and companionship.



## JOGGING TRACK

Step into an active lifestyle, put your well-being on track. Enjoy the refreshing outdoors as you stay fit, healthy and invigorated with each energizing lap.



## SKATE PARK

Indulge in thrilling adventures at the skate park, an exciting recreational spot for kids and young residents.



## OUTDOOR GYM

Revitalize in the open air, rejuvenate with a consistent health routine. Elevate your fitness surrounded by nature, fostering a healthier lifestyle with each workout session



## BUTTERFLY AND FRAGRANCE GARDEN.

Delight in the sensory experience of our fragrance garden and butterfly garden, adding a touch of nature to your daily life.



## MULTI-USE COURT

Stay active with multi-use courts for volleyball, badminton, basketball and a tennis court, while the pet zone and amphitheatre cater to diverse recreational preferences.

## SERVE, RALLY, WIN: ELEVATE YOUR TENNIS SKILLS HERE.

Unleash your tennis prowess on the meticulously designed court. Ace up your game in a setting tailored for ultimate tennis enthusiasts. Your court, your skills, your victory – welcome to the world of tennis excellence.



## PETS ZONE

Pamper your furry friends in our dedicated Pet Zone, where tails wag and companionship thrives amidst a haven of joy and comfort.



## AMPHITHEATRE

The amphitheatre cater to diverse recreational preferences

## 5-TIER SECURITY SYSTEM

Your safety is our priority, ensuring a secure and protected environment for you and your loved ones.



## ELECTRIC CAR CHARGING POINTS

Power up your commutes and charge into the future. Embrace sustainability with convenient options, making eco-friendly living seamlessly integrated into your lifestyle.



## HIGH SPEED LIFTS

Elevate your living experience and enjoy swift, seamless journeys within our modern and efficient residential spaces.



## CART FACILITY

Experience convenience with cart facilities in the parking area, simplifying the transport of goods and belongings for residents.



### SAMRT CONTROLLED ACCESS SYSTEM FOR HOUSEHELP

Ensure security with controlled servant entry, seamlessly managed through cutting-edge smart access technology for a worry-free living experience.



### SMART DOOR LOCK

Embrace futuristic living with home automation, VDP fingerprint and card reader smart locks at the main entrance, combining security and convenience.



### CHEF ON CALL FOR PRIVATE DINING

Experience culinary delight with a chef on call for private dining, adding a touch of exclusivity and luxury to your gastronomic experiences.

# SITE PLAN



## LEGENDS

1. FIRE TENDER PATH
2. JOGGING TRACK
3. POOL DECK
4. SWIMMING POOL A-G (C&G HEATED POOL)
5. OUTDOOR GYM AREA
6. WATER PAVILION SEATING PLAZA
7. YOGA & MEDITATION AREA
8. OPEN PARTY DECK
9. SCULPTURE GARDEN
10. KIDS PLAY AREA
11. SENIOR CITIZEN AREA
12. MIYAWAKI FOREST
13. HAMMOCK GARDEN
14. HIBISCUS GARDEN
15. SKATING RINK
16. PET ZONE
17. AMPHITHEATER
18. FRAGRANCE GARDEN
19. BADMINTON COURT
20. MULTI USE COURT
21. SEATING AREA
22. COMMERCIAL (G+2)
23. CRICKET PITCH

### LEGEND :

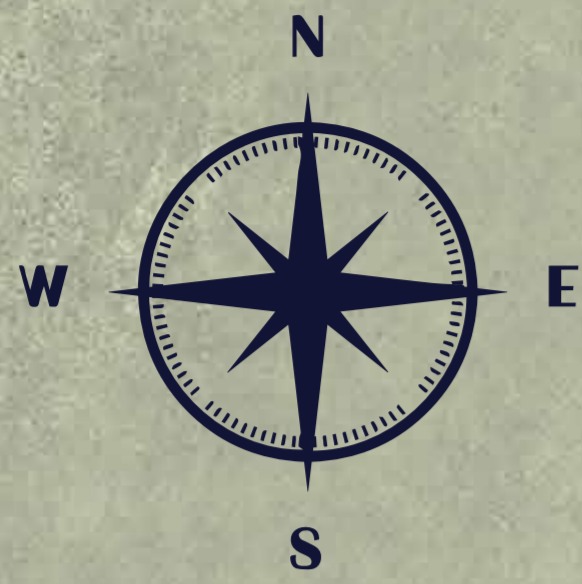
- |            |  |
|------------|--|
| T-1 (P+25) |  |
| T-2 (P+28) |  |
| T-3 (P+31) |  |
| T-4 (P+34) |  |
| T-5 (P+40) |  |
| T-6 (P+38) |  |
| T-7 (P+35) |  |
| T-8 (P+33) |  |
- |          |   |
|----------|---|
| LEGEND : |   |
| 3 BHK    | <span style="display: inline-block; width: 15px; height: 10px; background-color: #8B4513; border: 1px solid black;"></span> |
| 3.5 BHK  | <span style="display: inline-block; width: 15px; height: 10px; background-color: #D2691E; border: 1px solid black;"></span> |
| 4.5 BHK  | <span style="display: inline-block; width: 15px; height: 10px; background-color: #E6C09C; border: 1px solid black;"></span> |

### PODIUM TOP 1ST FLOOR LVL PLAN

\* TYPICAL FLOOR / UNITS OF RESIDENTIAL TOWERS START FROM 2ND FLOOR LEVEL



# SITE PLAN



## LEGENDS

1. FIRE TENDER PATH
2. JOGGING TRACK
3. GUARD HOUSE
4. TOWER DROP OFF
5. WATER BODY
6. KIDS PLAY AREA
7. PERGOLA
8. SCULPTURE GARDEN
9. PAVILION SEAT
10. SENIOR CITIZEN AREA
11. MIYAWAKI FOREST
12. HAMMOCK GARDEN
13. HIBISCUS GARDEN
14. PARKING
15. PET ZONE
16. SEATING AREA
17. LANDSCAPE GREEN
18. COMMERCIAL PLAZA
19. CLUB DROP OFF
20. F & B
21. TRIPLE HEIGHT LOBBY
22. COMMERCIAL (G+2)
23. LIFT LOBBY
24. COMMERCIAL DROP OFF

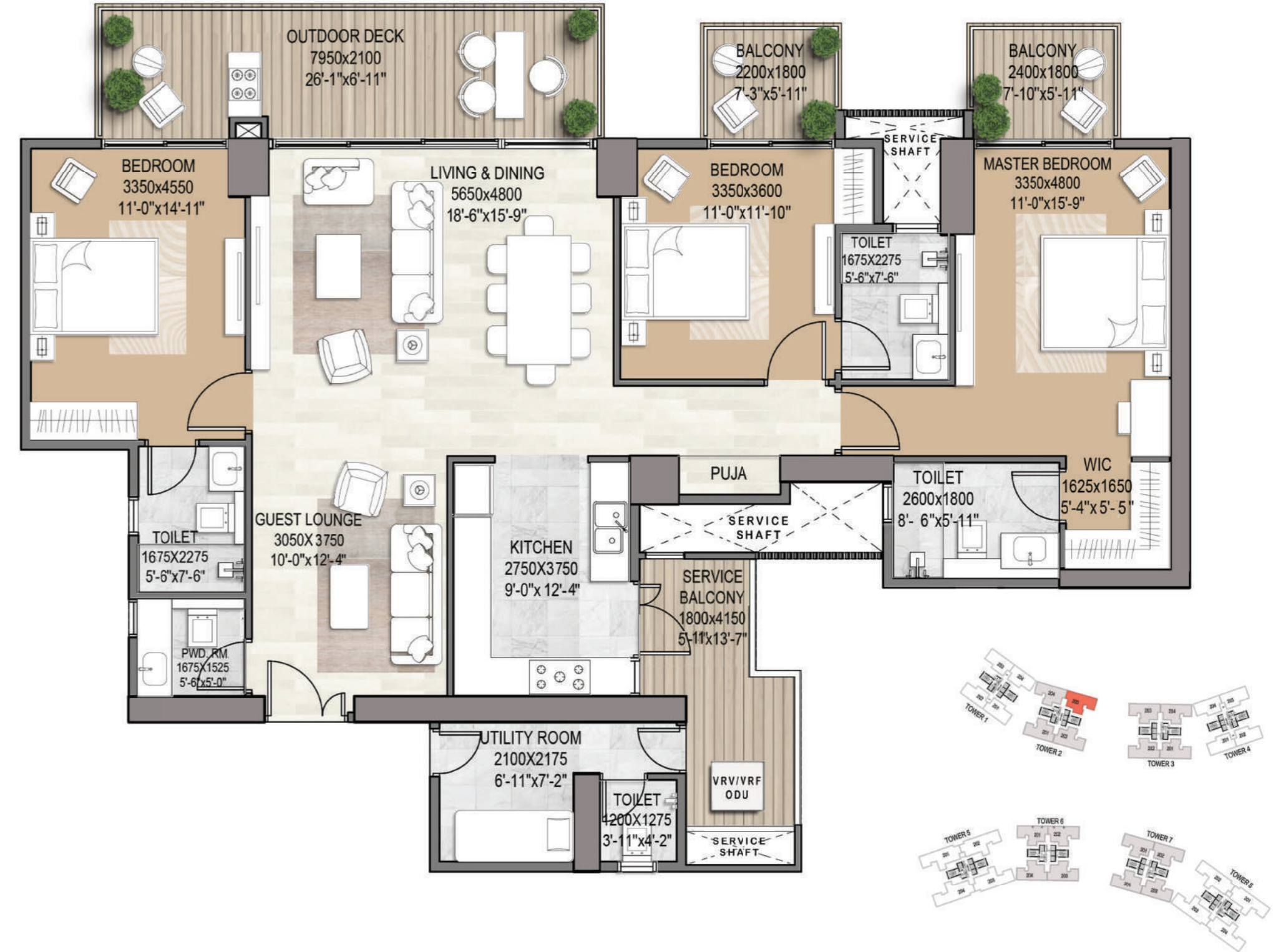
SITE PLAN  
GROUND FLOOR LVL PLAN

### 3 BHK UNIT PLAN

3 BHK, 3 Toilets, Powder Room, Puja, Utility Room

### 3.5 BHK UNIT PLAN

3 BHK, 3 Toilets, Powder Room, Guest Lounge, Puja, Utility Room



### 4.5 BHK UNIT PLAN

4 BHK, 4 Toilets, Powder Room, Guest Lounge, Puja, Utility Room



TOWERING CRESCENDO.  
SYMPHONY IN HEIGHTS.

