



— R I S H A B R A J —

Trident



MR. HARRISH KUMAR JAIN

FOUNDER & MANAGING DIRECTOR

Mr Harrish Kumar Jain is the force behind the Group spearheading into Real Estate space and carving its own niche in Redevelopment Space. He is the son of Mr. Ratanchandji Jain who is a distinguished Businessman and a well-known philanthropist.

Mr Harrish Kumar Jain even before graduating from college begun his entrepreneurial journey in the textile business and after completion of his graduation saw great potential in the Redevelopment of Societies and so his journey began, learning along the way and guided by Family Values of Commitment and Dedication in a short span of a decade he through his companies has managed to develop more than 50 projects successfully delivering to the delight of existing and new customers.

His astute business acumen, technical genius and liaison capabilities has enabled Company's outstanding track record. His projects display the thoughtfulness that goes into providing the families with comfortable homes

His leadership qualities and drive for benchmarking the real estate industry drove him to become the Founder member of Brihanmumbai Developers Association (BDA) which could garner 700+ members in a short span of 5 months and he leads the way to solve the issues faced by developers executing redevelopment projects at all levels of government and bureaucracy.

COMPLETED PROJECTS



RISHABRAJ
SAMAJ DARSHAN 

Kandivali West



RISHABRAJ
AGNEL

IC Colony
Borivali West



Rishabraj
Vicinia

Ghatkopar East

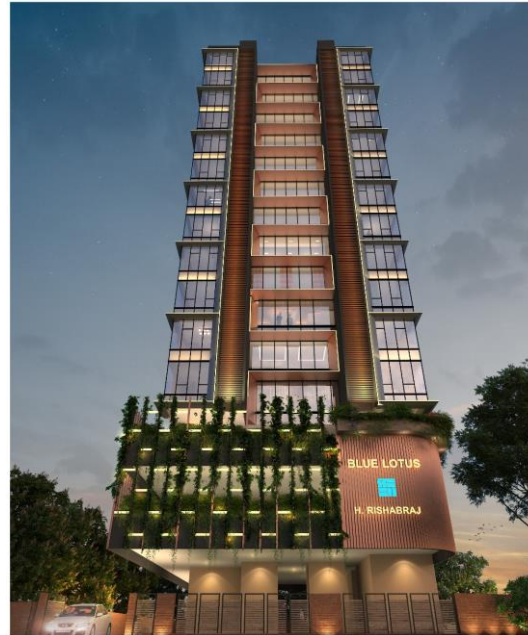
**+26
More**

ONGOING PROJECTS



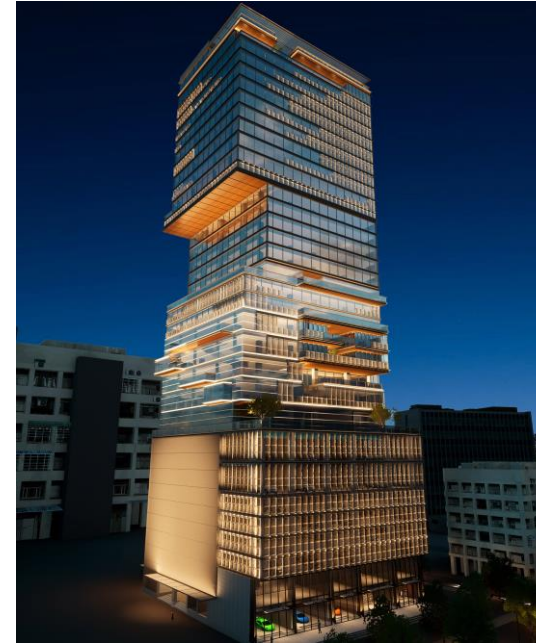
RISHABRAJ
PHOENIX

3 BHK & Duplex
Borivali West



BLUE
LOTUS

2 BHK & 3 BHK
Khar West



63 GMA
GOLDMEDAL AVENUE

Office Spaces
Goregaon West

+6
More

UPCOMING PROJECTS



 RISHABRAJ
MANGAL VARSHA

Khar West




RISHABRAJ
LUXURIA

Khar West



63 R
R
A
RISHABRAJ AVENUE

Goregaon West

**+12
More**

50+
PROJECTS

THE LEGACY

20 LAKH+ SQ.FT.
OF DELIVERED PROJECTS

4,000+
HAPPY FAMILIES



Presenting
THE BILLIONAIRE'S CHOICE

at Juhu

By

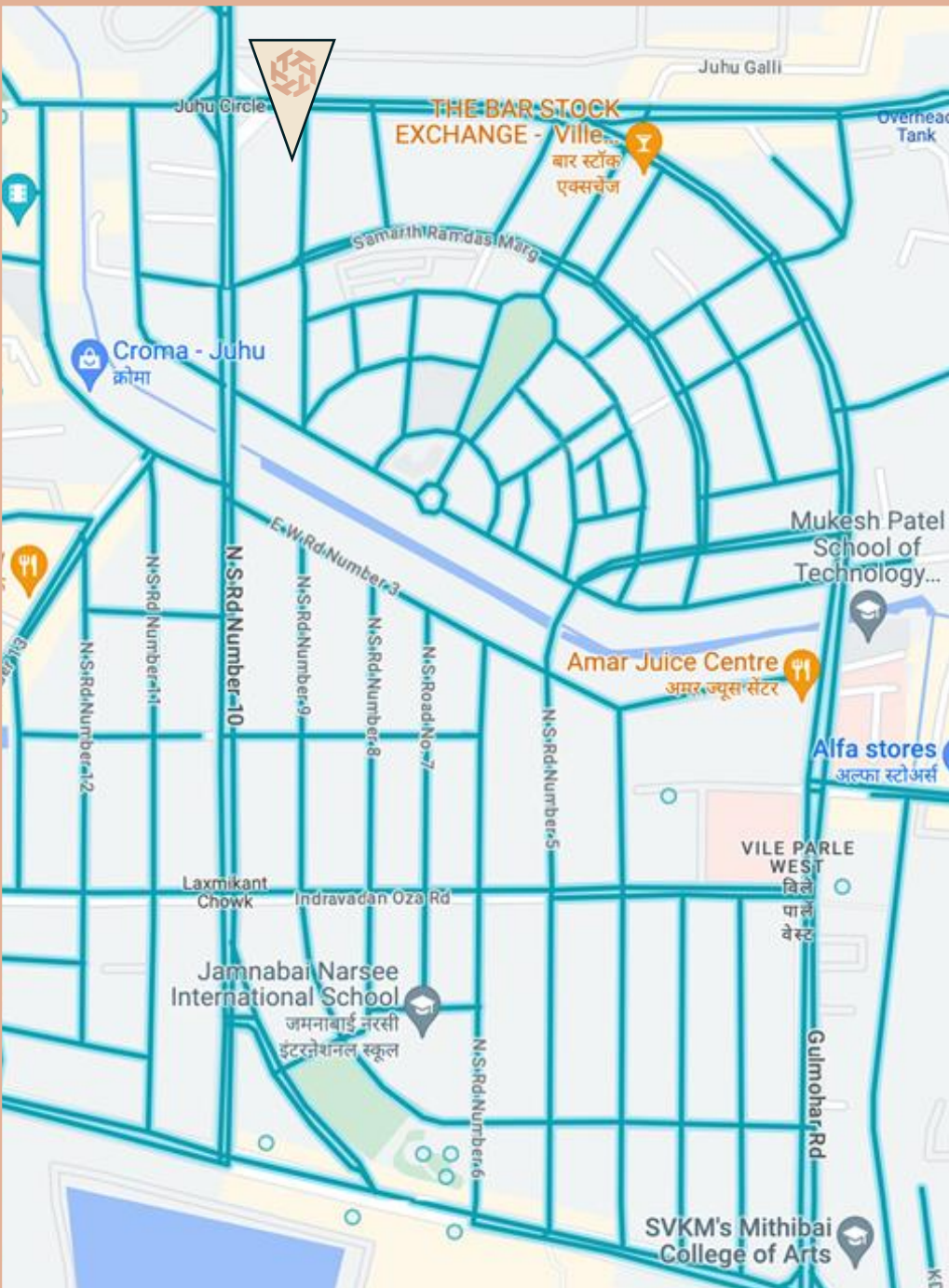
J. Rishabraj

***INCOMPARABLE
3 & 4 BED RESIDENCES AT***



— R I S H A B R A J —

Trident



*LA VISH RESIDENCES IN ONE OF THE MOST FAMOUS AND
PRESTIGIOUS NEIGHBOURHOODS IN MUMBAI*



- Novotel (1.4 Km)
- Sun N Sand (1.5 Km)
- JW Marriot (1.9 Km)
- Ramada Plaza (2.3 Km)



- PVR Cinemas (0.85 Km)
- Joggers Park (1.3 Km)
- Prithvi Theatre (1.8 Km)
- Juhu Beach (2.4 Km)



- Ecole Mondiale (0.75 Km)
- Jamnabai Narsee School (1.4 Km)
- NM College (1.5 Km)
- Mithibai College (1.5 Km)
- NMIMS (1.8 Km)



- Starbucks (0.65 Km)
- Silver Beach Café (1 Km)



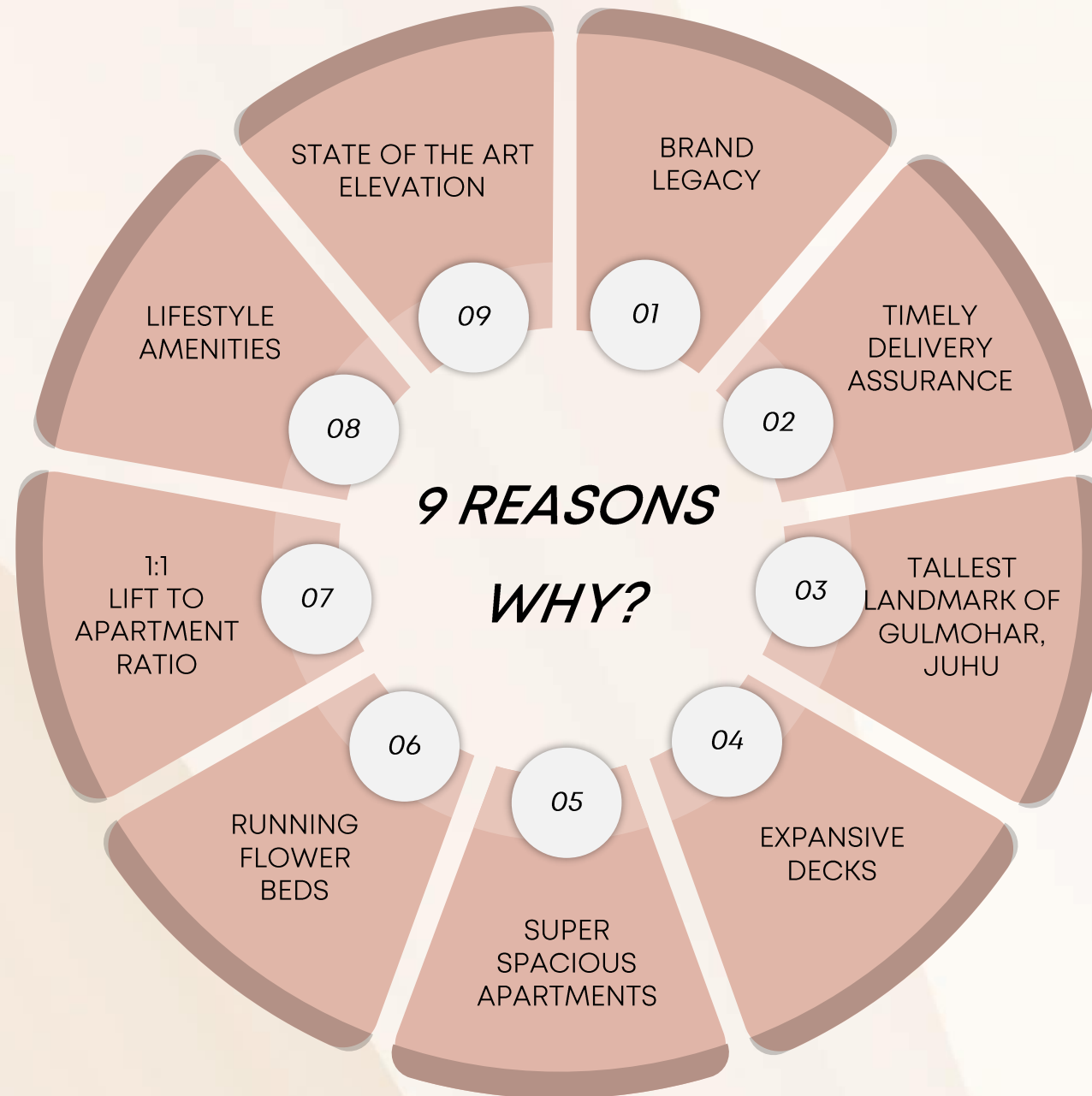
- Cooper Hospital (1.5 Km)
- Nanavati Hospital (3 Km)



- The Club (1 Km)
- Juhu Club Millenium (1 Km)
- Juhu Gymkhana (1 Km)



9 REASONS WHY?



3 BHK UNIT PLAN



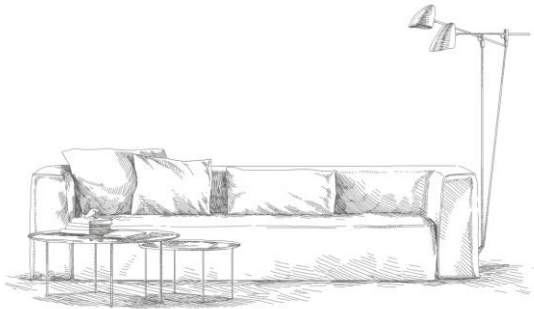
UNIT 4

RERA AREA	BALCONY AREA	TOTAL RERA CARPET AREA
1393 SQ.FT.	105 SQ.FT.	1498 SQ.FT.

MahaRERA Registration No.: P51800053505 | Also Available on: maharera.mahaonline.gov.in
This plan is tentative and subject to approval.



- UNIT USP'S
- 500+ sq. ft. of Lavish Living/Dining Area
 - 3 ensuite bathrooms + 1 Powder Washroom
 - Kitchen + Dry Yard
 - 110+ sq. ft. Expansive Sun Deck/Balcony
 - No Wastage Plan
 - East-West Entry/Exit



4 BHK UNIT PLAN



UNIT 3

RERA AREA	BALCONY AREA	TOTAL RERA CARPET AREA
1694 SQ.FT.	130 SQ.FT.	1824 SQ.FT.

MahaRERA Registration No.: P51800053505 | Also Available on: maharera.mahaonline.gov.in
This plan is tentative and subject to approval.



UNIT USP'S

- 350+ sq. ft. of Dedicated Living Area
- Private Dining Space
- 2 Bedrooms with Dressing chambers
- 4 ensuite bathrooms + powder washroom.
- ~100+ sq. ft. of expansive deck
- Flower Beds in All Bedrooms



AMENITIES

GYMNASIUM

INDOOR GAMES

LIBRARY

TERRACE GARDEN

