

EARLY BIRD INVESTOR SCHEME

ONLY FOR FRIENDS & FAMILY

AYODHYA PROJECT LAYOUT PLAN

Our site



Guptar Ghaat
9.0km



Ram Path 5.0 km



Ram Mandir 13 km

RAM
MANDIR

GATE → Lucknow to Ayodhya NH → GATE



Ayodhya Entrance
Gate 3.0 KM



Ram Path Gate 4.5 km



Ayodhya court/civil
line area 6.0 km



District Hospital 9.0 km

COURT

HOSPITAL

Railway
station 8 km



RAILWAY
STATION

Lucknow to Ayodhya NH-28

AYODHYA to Raibareli NH 6.0km

AYODHYA to Allahabad NH 7.0km

AIRPORT



Airport 7.5 KM

UNIVERSITY



RMLA University 9.0 km

International Bus Stop 11 KM



Medical Collage 12 km

HOSPITAL



Lucknow - Faizabad Highway

Sarayu River

Project Site



Sarayu River

Ayodhya City

Project site

Entrance

Lucknow - Faizabad Highway

Lucknow - Faizabad Highway

Entrance

Project site





Sarayu River

Project site

Entrance

Lucknow - Faizabad Highway



Sarayu River

Project site

Entrance

Lucknow - Faizabad Highway



The completion of this ambitious project will not coincide with the inauguration of the Ram Mandir, as the proposal is still in its early stages.



India Today News Desk

Ayodhya, UPDATED: Sep 25, 2023 13:54 IST



Subscribe to Notifications

The Uttar Pradesh government has announced a plan to build a lotus-shaped fountain near Guptar Ghat in Ayodhya. Estimated to cost around Rs 100 crore, this grand spectacle will be designed in a way that 25,000 people would be able to see it at once.

The fountain will be in the shape of a lotus flower, while the water flowing out from it will reach a height of about 50 meters. However, this ambitious project will be completed much after the inauguration of Ram Mandir, as the proposal is still in its early stages.

Ayodhya will witness surge in economic activities after inauguration of Ram temple: Nripendra Mishra

September 27, 2023 05:01 pm | Updated 05:37 pm IST - New Delhi

"As money flows in, people will have many opportunities, and along with these opportunities, there will be increased investments in the area. We have received 16 applications for building hotels, and a plan for a smart city is also in progress," Nripendra Mishra said.

PTI



Nat Habit - Fresh Ready To App...

₹304.10 ₹462.00 ✓prime





ADVERTISEMENT

"As money flows in, people will have many opportunities, and along with these opportunities, there will be increased investments in the area. We have received 16 applications for building hotels, and a plan for a smart city is also in progress," he said.

Mr. Mishra, a member of the trust, explained that a master plan is being worked out to improve transportation infrastructure in Ayodhya. "One day, it might be necessary to expand Ayodhya just like the national capital region of Delhi." He said the current Ayodhya is not equipped to handle the huge number of visitors expected in the city and its increasing population.

He said the current population of Ayodhya is approximately 3.5 lakh and it is estimated to see five lakh more added as visitors and others who migrate after the economic activities surge once the temple is inaugurated. "This population is both a challenge and an opportunity. Local people can provide accommodations to the visitors in their homes at affordable rates. It is true that this area needs to expand," he said.

Mr. Mishra mentioned that the State government



Nat Habit - Fresh Ready To App...

₹304.10 ₹462.00 ✓prime



[Home](#) / [India](#) / Lotus-shaped fountain worth Rs 100 crore to come ...

Lotus-shaped fountain worth Rs 100 crore to come up near Ram Temple in Ayodhya

The Uttar Pradesh government has announced a plan to build a lotus-shaped fountain near Guptar Ghat in Ayodhya. The proposal, though finalized, needs to transition from paper to the ground.

ADVERTISEMENT



वादे से ज्यादा

बचत वाली दवाई दुकान

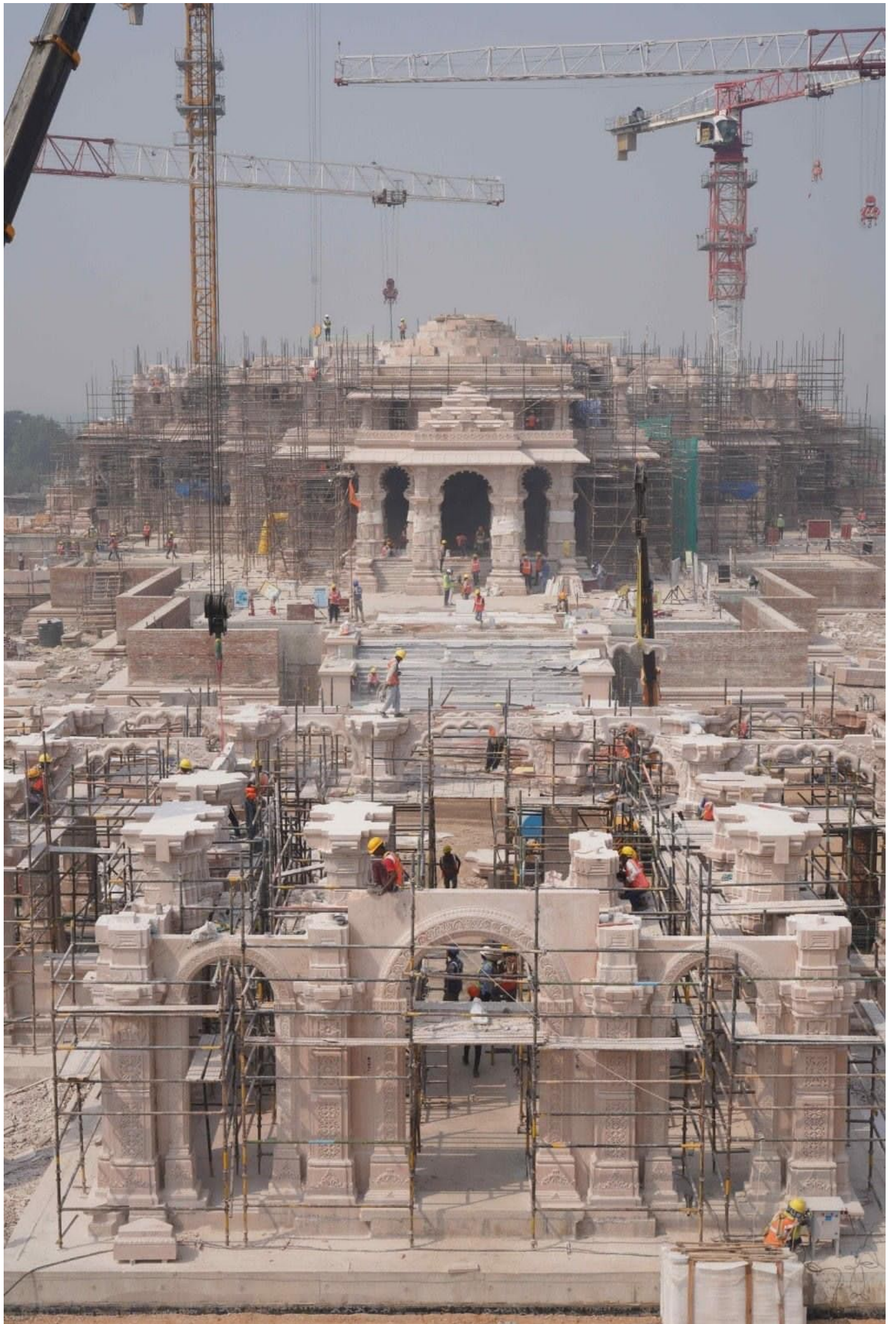
श्री धन्वंतरी मेडिकल स्टोर

69 लाख | **72%** तक छूट
लोगों ने खरीदी पर सस्ती दवाई

श्री भूपेन्द्र कपूर
मुख्यमंत्री, उत्तर प्रदेश

छत्तीसगढ़ सरकार - भरोसे की सरकार









Hindustan Times's post



Hindustan Times ✓

1 h · 🌐

Ram Janmbhoomi Trust shares glimpses of under-construction temple | See latest pics



15.4k

694 comments 422 shares



Like



Comment



Share



Message Hindustan Times





BASIC DETAILS

PRE-LAUNCH PRICE : Rs.60,000/SQYD + OTHER CHARGES

PAYMENT PLAN : 50% NOW
25% ON A DEVELOPMENT MILESTONE (TBD)
25% ON OFFER OF POSSESSION

AVERAGE SIZE : 200 SQYD

BSP AMOUNT : Rs.1.2CRORE (Rs.60,000 x 200)

INITIAL INVESTMENT : Rs.60,00,000 (Rs. 1.2 CRORE x 50%)

ASSURANCES FOR CUSTOMER

- TERM SHEET
- INVESTMENT AGREEMENT
- RIGHT TO VIEW THE REGISTRY COPY