



Habitat Realtech Presents
Dream Terraces, Neemrana
Kingsize Villas, 3/2 BHK Floors & Plots

Welcome to a whole new world of luxury and comfort at Dream Terraces, Neemrana. A premium township project spread across 9 acres, the development is thoughtfully planned, beautifully styled and conveniently located just off National Highway 8.

Dream Terraces is the only development with exclusively low rise buildings, making it the most spacious township in the area with a clutter free skyline. Featuring contemporary style 5 bedroom Designer Villas, 3/2 BHK Floors & Plots, Dream Terraces is an exclusive residential township adjacent to the EPIP Scheme of RIICO. Dream Terraces offers functional living spaces with all modern amenities including landscaped parks and playgrounds, along with elegant arrival areas and dedicated covered parking with each dwelling.

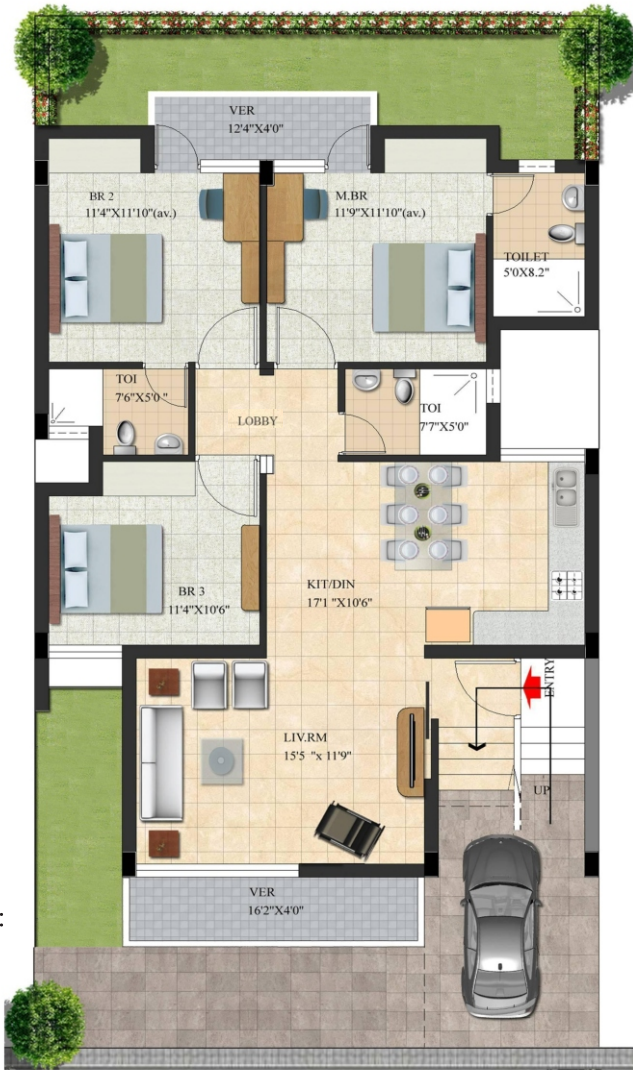
If you're looking for a green, clean and serene habitat, step into Dream Terraces, Neemrana.



Artistic Impression

5 Bedroom Designer Villas

Super Area:
2650 sq. ft +
Terrace Garden:
266 sq. ft. +
Lawn



Typical Ground Floor Plan



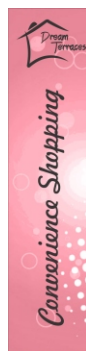
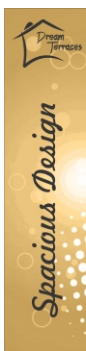
Typical First Floor Plan

For those who love to be treated like royalty

Dream Terraces offers 5 bedroom designer Villas in Contemporary Architectural style. Elegantly designed with magnificent facades and generous open spaces, these kingsize villas exude an elegant style and a strong sense of freedom.

Spread over 3000 square feet, Dream Terraces Villas embody who you are and the lifestyle you embrace. Your retreat with all modern facilities, all villas offer:

- Landscaped Terrace Garden
- Peaceful and convenient accessibility
- Naturally lit and ventilated living spaces
- Gated Community with 24x7 security
- Club house
- Kids Play Area
- Convenience Shopping
- Power Back Up
- Covered Parking
- Front & Rear Lawns
- Each dwelling facing/overlooking green area





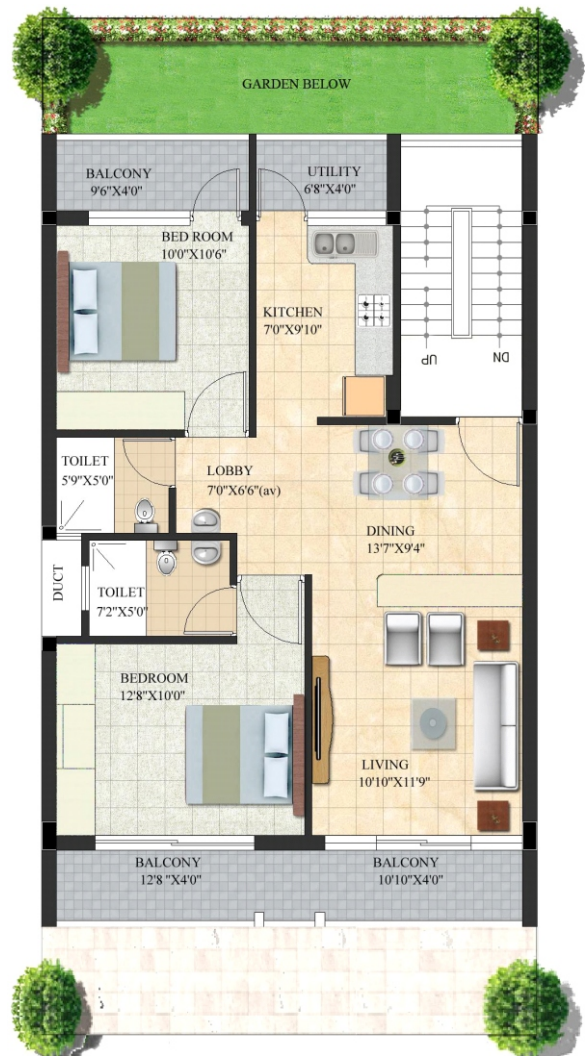
3 & 2 BHK Floors

3BHK
Super Area:
 1580 sq. ft +
 Covered Parking

2BHK
Super Area:
 1180 sq. ft +
 Covered Parking



Typical 3 BHK Floor Plan



Typical 2 BHK Floor Plan

Beautiful vistas from every floor

With a choice of 3 and 2 bedroom floors, Dream Terraces offers a rare combination of comfort and affordability. Exclusively designed in stilt + 3 configuration, each floor offers plush living rooms, well appointed bedrooms and spacious kitchens.

A far cry from the cluttered skyline and concrete jungle views that are associated with urban living, Dream Terraces comes as a breath of fresh air. The entire township has been designed by V. K. Girdhar – a who's who in the field of architecture with a Master's Degree from the famed

Massachusetts Institute of Technology, USA. Planned to the minutest detail, each floor features a dedicated covered parking, thereby ensuring smooth flow of traffic, keeping the resort-like campus peaceful and quiet.

Add to that its fabulous accessibility from NH 8 and strategic location within the new industrial, commercial and institutional hub of Neemrana, and you know why Dream Terraces is being billed as the hottest new investment in the region.

Naturally lit & Ventilated



Extensive Parks & Playgrounds



Secure Community



Site Plan



Infrastructure

- Integrated water supply system with adequate underground & overhead water tanks
- Carefully designed infrastructure for hassle free living
- Eco- friendly Sewerage system with STP/organic waste converters
- Dedicated covered parking for each dwelling ensuring free flow of traffic for years to come
- Club house with various amenities for recreation
- Landscaped roads network with elegant arrival areas
- Convenience shopping for daily needs within the premises
- Underground cables for power supply
- Power back up

Specifications

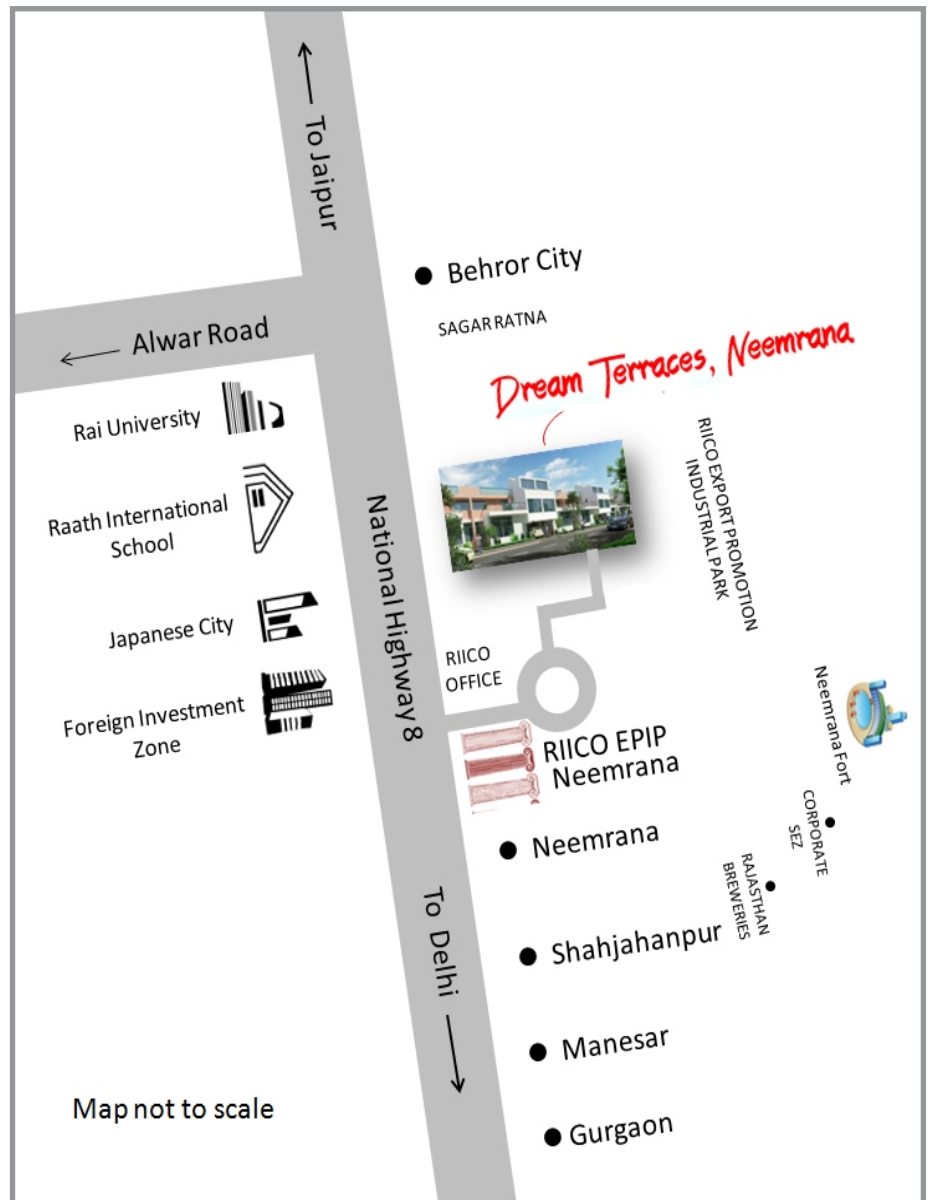
- Durable structures designed with seismic considerations
- Premium tiles / wooden laminated flooring in rooms
- Elegant Stone/Tile flooring in staircases and common lobby areas
- Aluminium/UPVC glazed windows
- Stone / tile cladding and texture paint on exteriors
- Designer bathrooms with premium quality fittings of Jaquar/Cera/Hindware make or equivalent
- Upscale modern kitchens with granite counter, S.S sink & designer tiles
- Elegant modular switches & sockets
- Fire resistant low smoke copper wires

Strategic Location, Wonderful Destination

Dream Terraces, Neemrana is an exclusive residential Development adjacent to the Export Promotion Industrial Park (EPIP) of RIICO in Neemrana, Rajasthan. It is just 600 mts from the NH 8 which gives it efficient accessibility as well as the required cushion from the noise and dust of the highway. The township is in close proximity to leading educational institutions and medical facilities making it an ideal residential development.

Other highlights include :

- Only 100 Km from Indira Gandhi International Airport, N. Delhi
- Very near to Japanese Investment Zone
- Falls under Golden Quadrilateral Belt
- In close vicinity of proposed Delhi-Mumbai Industrial Corridor (DMIC) as well as Dedicated Freight Corridor
- Close proximity to Neemrana Fort and various resorts
- Easy access to educational facilities (schools, universities and other institutes)
- About 60 Km from Manesar Industrial Hub
- Proposed connectivity with Delhi through Mass Rapid Transit System (MRTS) rail



Map not to scale

Habitat Realtech – A unit of JRC GRID ENGINEERS

Habitat Realtech is a premium venture of JRC Grid Engineers - a construction company specializing in the development of Residential Complexes and Group Housing Societies. JRC Grid Engineers is a well-established company with experience of 30 years and have delivered more than 16 million square feet of residential built up area in Delhi -NCR. It prides itself on an impressive record of successfully completed projects, and enjoys the reputation of meeting its schedules and providing high client satisfaction. The company is widely regarded in the industry for its expertise, integrity and quality; and is now extending this heritage through Habitat Realtech.



Our clients list include numerous prestigious organizations like Army Welfare Housing Organization (AWHO), Indian Railway Welfare Organization (IRWO), Central Govt. Employees Welfare Housing Organization (CGEWHO) and Air Force Naval Housing Board (AFNHB), Officers of Cabinet Secretariat, Engineers India Ltd (EIL), Doctors & staff of AIIMS and several Housing Societies and corporate groups.



Habitat Realtech Pvt. Ltd.

C-2/398, Pankha Road, Janakpuri, New Delhi 110058

Tel:25551425, 25624766, Fax:25514497

E-mail : sales@habitatrealtech.com Website : www.habitatrealtech.com

Disclaimer: The perspective display of floor plate is only an artistic impression and sizes are on approx. basis. They are subject to change and can be altered at the sole discretion of the company.