



## RAM RESIDENCY

3/4 RK Family Apartments

## APARTMENTS THAT REDEFINE THE LANGUAGE OF LUXURY



You experience the bliss of harmony, when your mind, body and soul are in-sync with your home. Welcome to Ram Residency by Surya Builders & Developers. A home where the bliss of harmony resides. The project offers limited inventory of 36 apartments in 6 storey tower ensuring more privacy and less density.

Closely connected to Saras Chauraha and surrounding area, access to places like schools, hospitals, temple, offices etc is easy with adequate transportation facilities. So Ram Residency fulfills the expectations and are up to the mark.

Choose your happiness from a distinctive range of 3RK & 4RK apartments.



Artistic Impression







# ACCOMMODATES EVERY COMFORT, MOOD, WHIM & FANCY

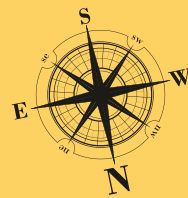
Ram Residency welcomes you and yours, to a realm of freedom and grandeur, luxurious and spaciouly laid out, the open home is thoughtfully divided into-

- Government Approved Project
- 6 floor Residences only
- 6 Apartments on each floor
- Park Facing Apartments
- Electrical vehicle charging Points
- Located at 40' main road in Surya City, Bharatpur
- Enhanced Structural Safety against Earthquakes
- Ample space for open and covered Parking
- 2 High speed Lift of Premium Brand
- Anti termite Treatment for Entire Building
- Rain water Harvesting as per norms
- Power backup for all common area
- Surrounded by schools, colleges and hospitals



Artistic Impression





## STILT FLOOR PLAN (STILT FLOOR)

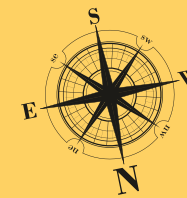
OTHER PLOT



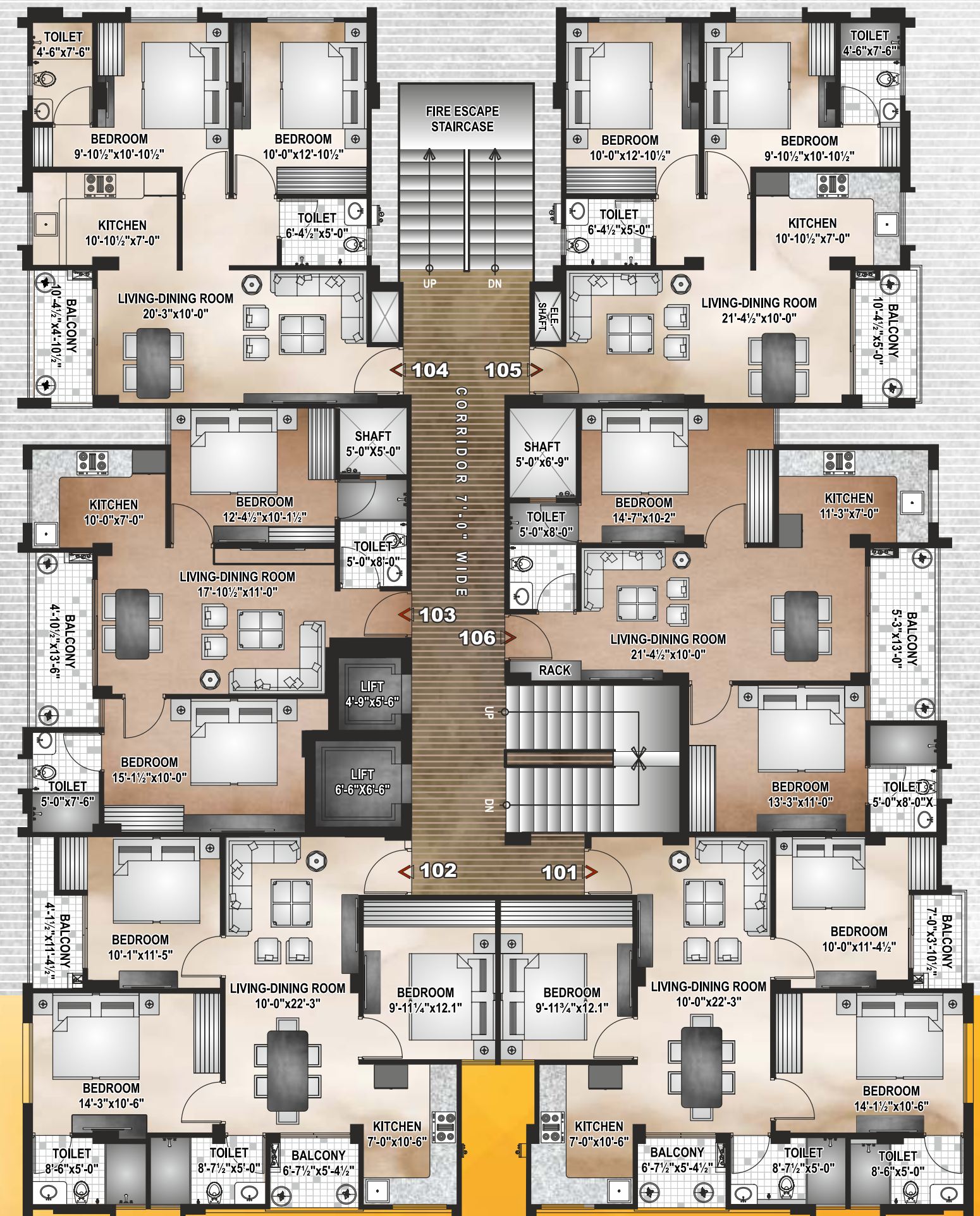
Artistic Impression

### COMMON FEATURES OF STILT FLOOR

- Drivers' / Maids' toilet
- Water storage tanks
- 2 Hi Speed Lifts
- Rainwater harvesting system
- Sewage system
- CCTV surveillance cameras will be provided at strategic common locations
- Interlocking paver block will be laid all around the building with demarcated driveway
- Common area and compound wall lighting will be provided as per the architect's design

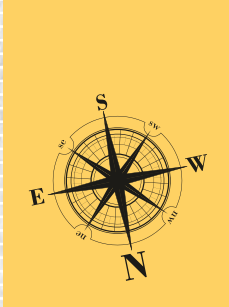


## TYPICAL FLOOR PLAN (GROUND FLOOR - V FLOOR)

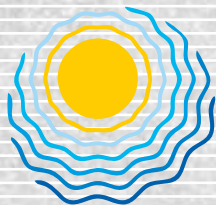


Artistic Impression



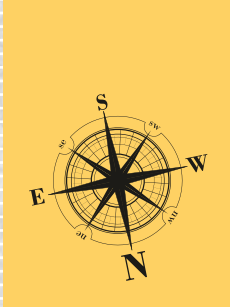


FLAT NO. 101-601  
4 RK

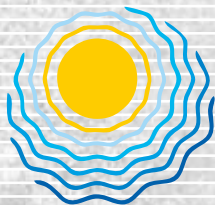


RAM RESIDENCY

3/4 RK Family Apartments

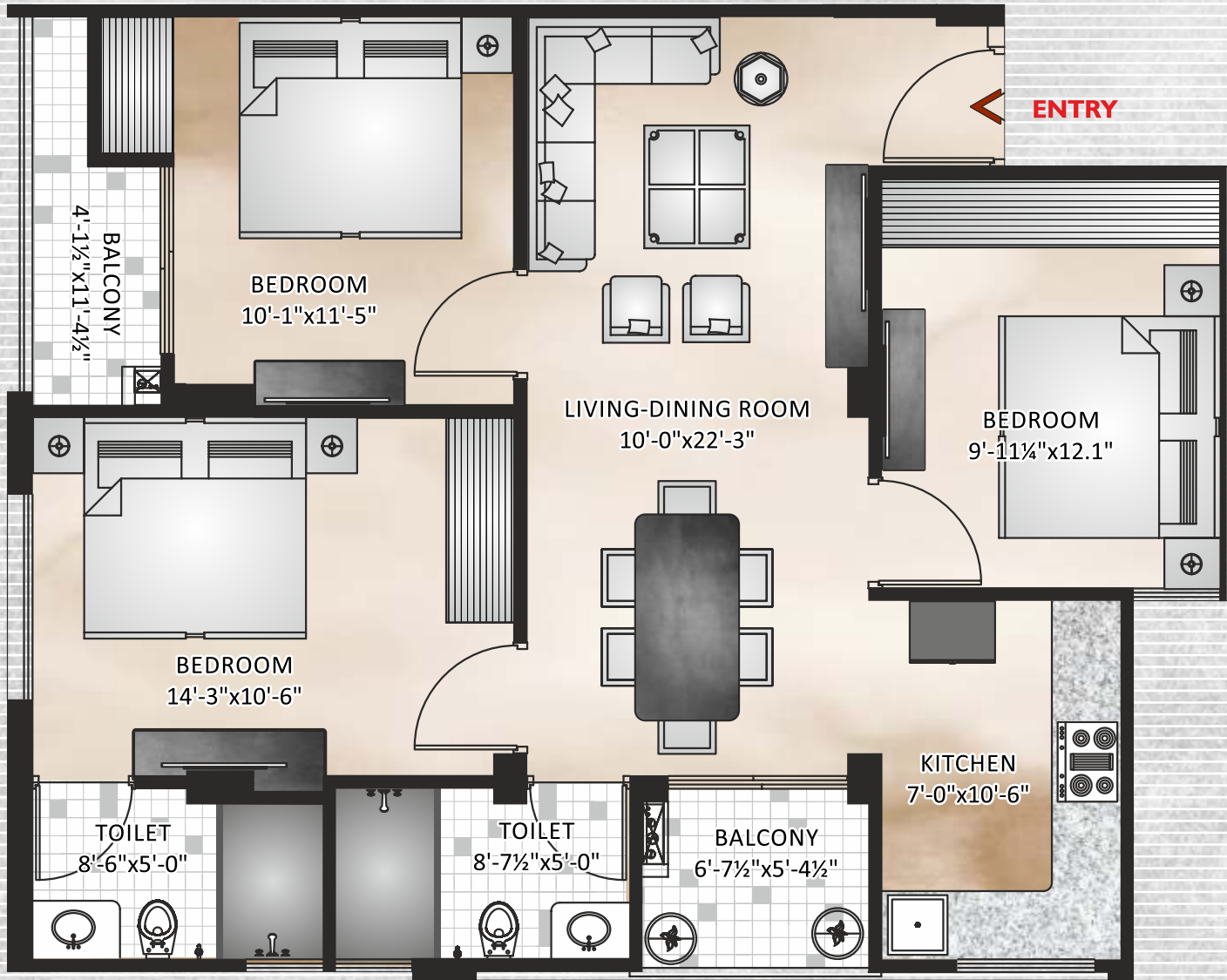
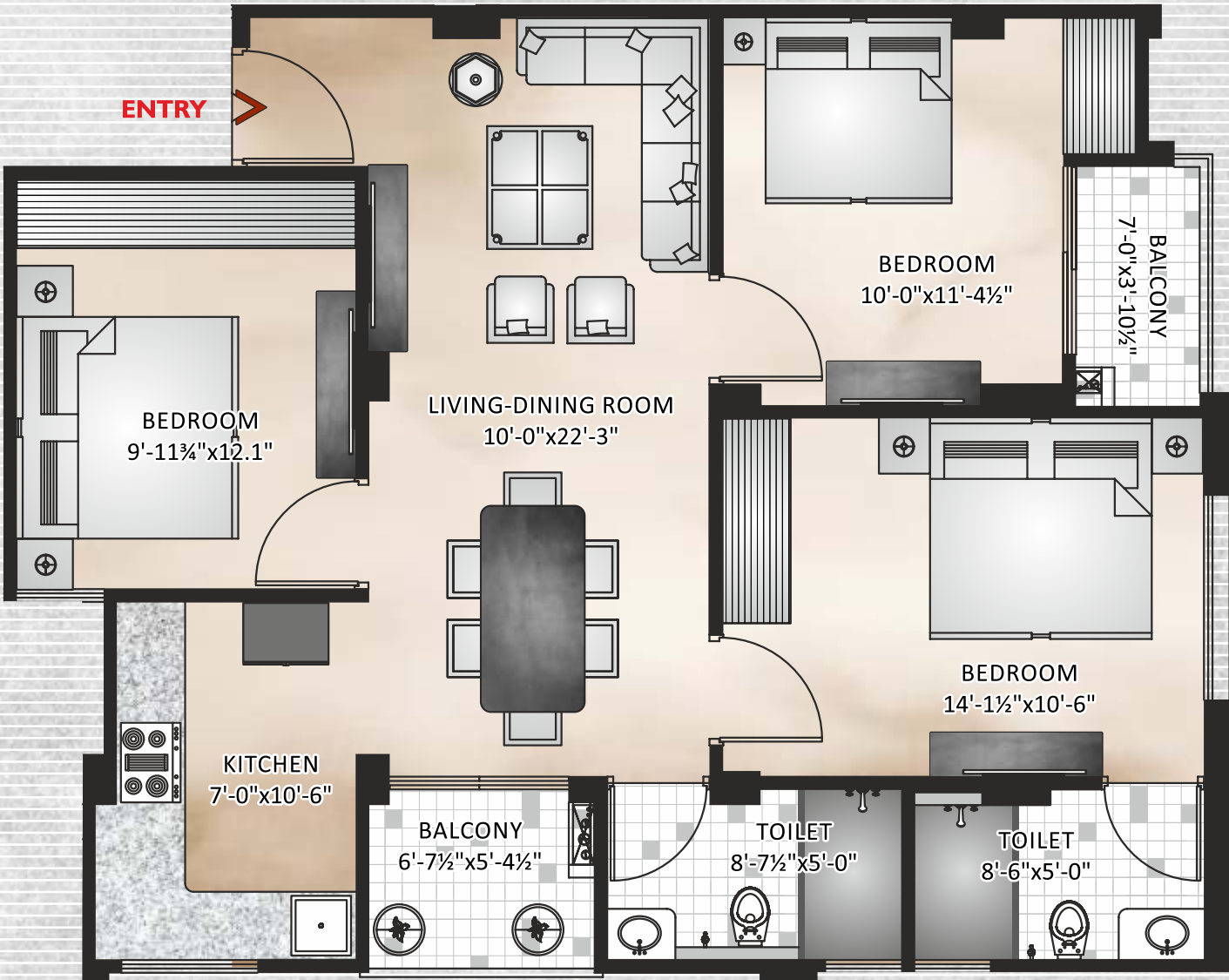


FLAT NO. 102-602  
4 RK



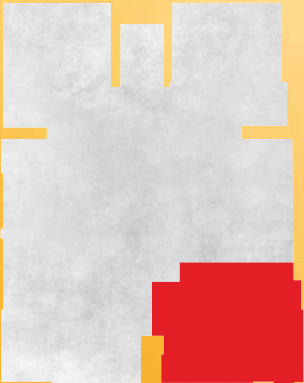
RAM RESIDENCY

3/4 RK Family Apartments



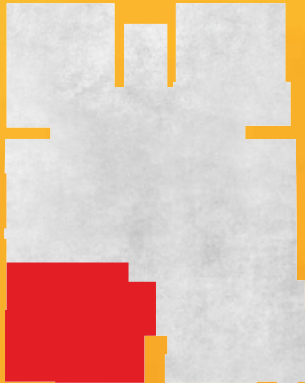
Artistic Impression

FLAT NO	BUILTUP AREA	CARPET AREA	BALCONY AREA	SALEABLE AREA
101-601	945.00	823.00	65.00	1256.00

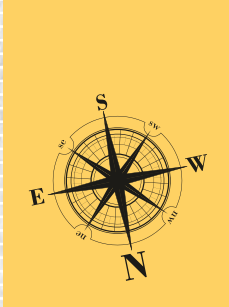


Artistic Impression

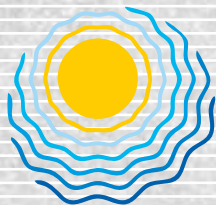
FLAT NO	BUILTUP AREA	CARPET AREA	BALCONY AREA	SALEABLE AREA
102-602	951.00	820.00	75.00	1264.00





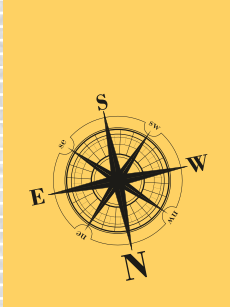
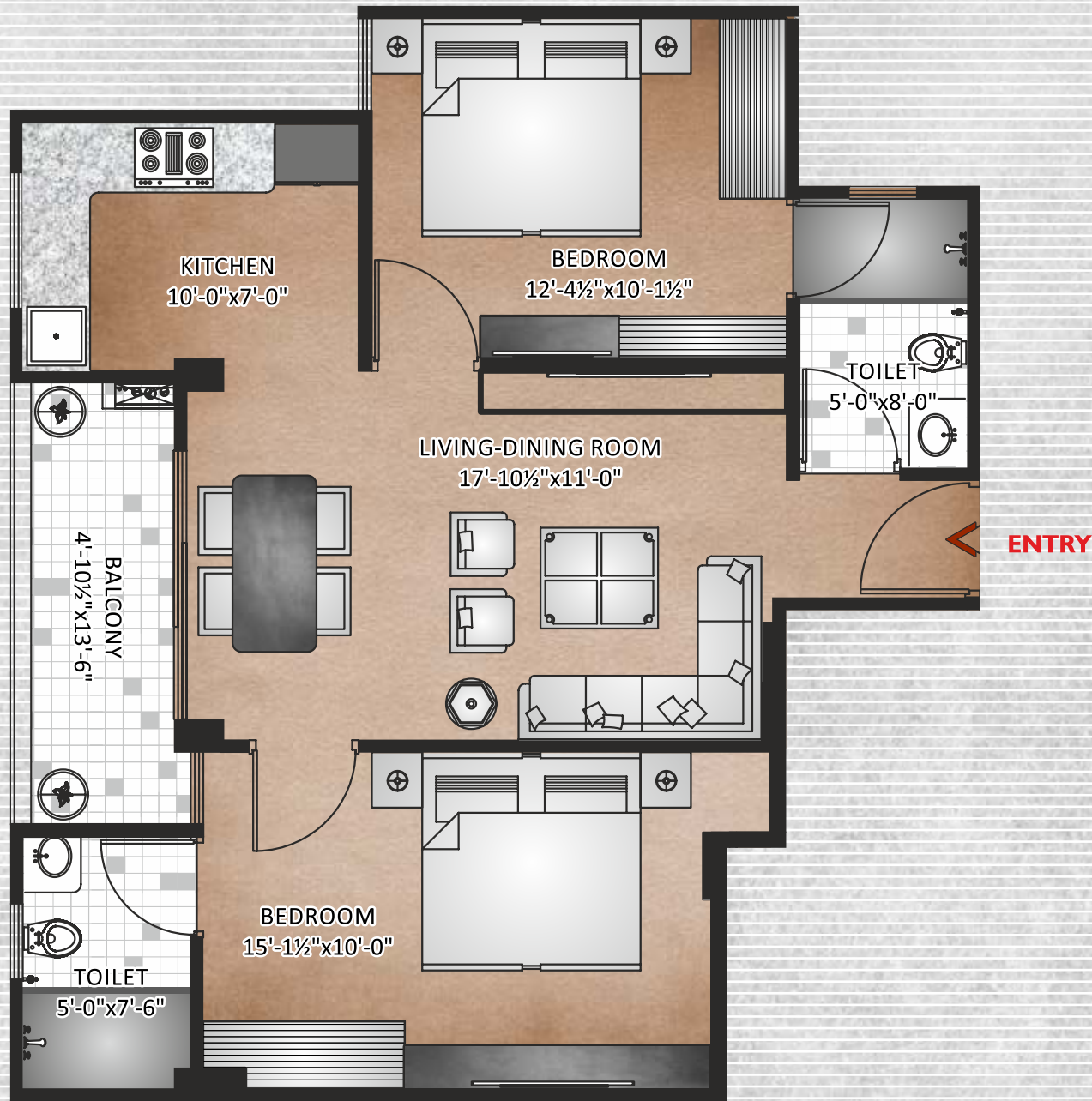


FLAT NO. 103-603  
3 RK



RAM RESIDENCY

3/4 RK Family Apartments

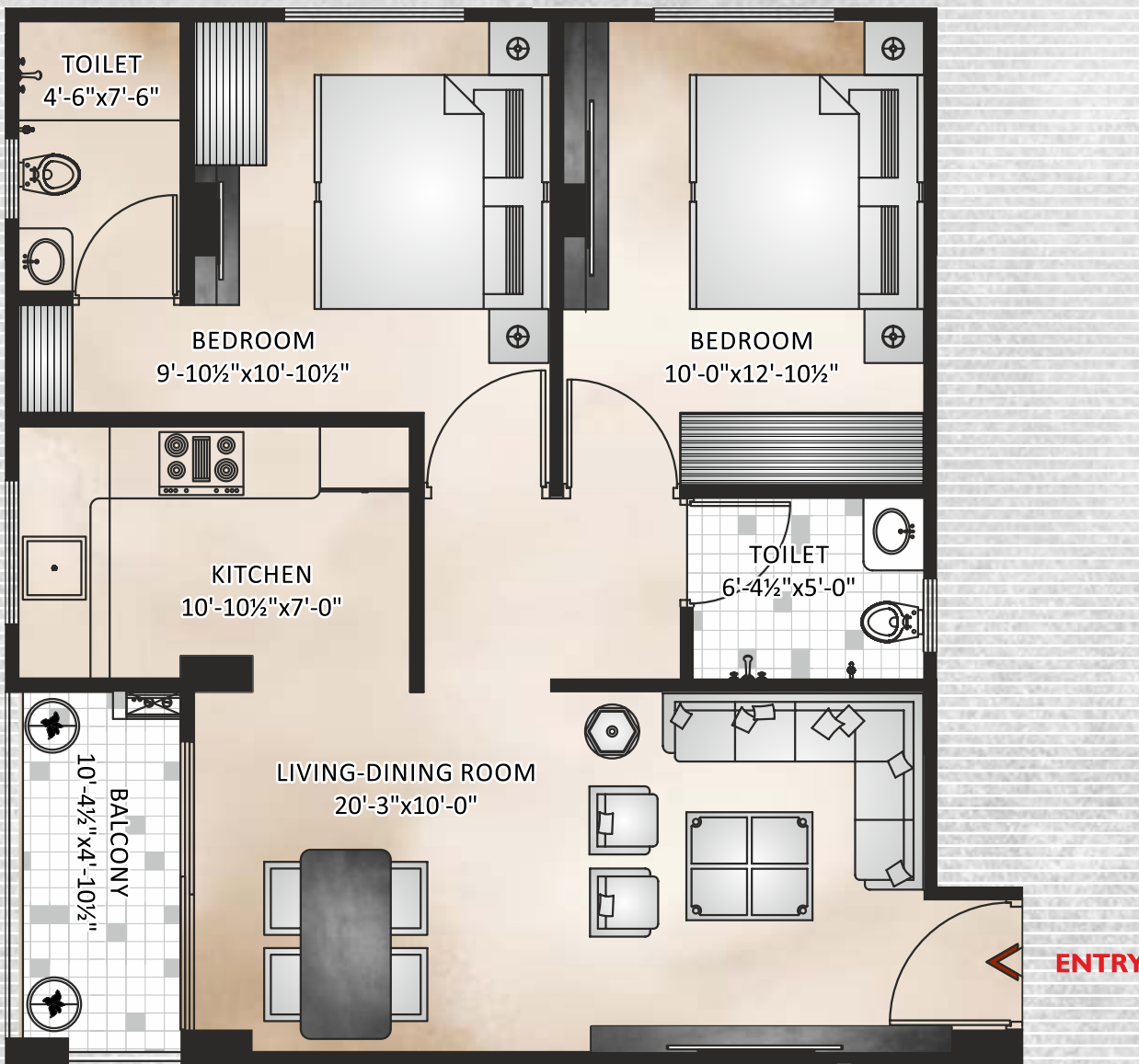


FLAT NO. 104-604  
3 RK



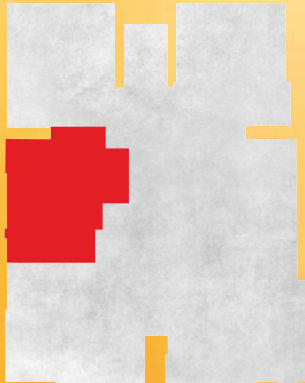
RAM RESIDENCY

3/4 RK Family Apartments



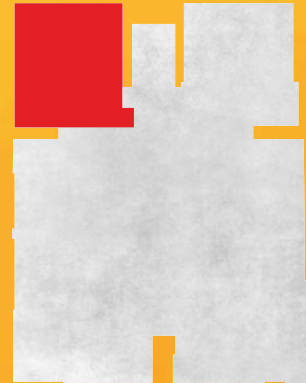
Artistic Impression

FLAT NO	BUILTUP AREA	CARPET AREA	BALCONY AREA	SALEABLE AREA
103-603	790.00	671.00	65.00	1050.00

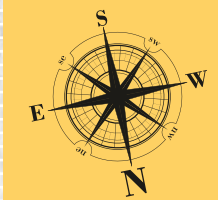


Artistic Impression

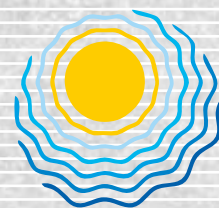
FLAT NO	BUILTUP AREA	CARPET AREA	BALCONY AREA	SALEABLE AREA
104-604	778.00	675.00	50.00	1034.00





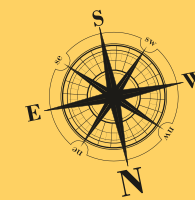


FLAT NO. 105-605  
3 RK

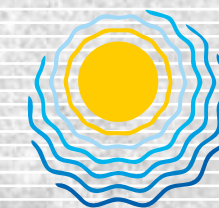


**RAM RESIDENCY**

3/4 RK Family Apartments

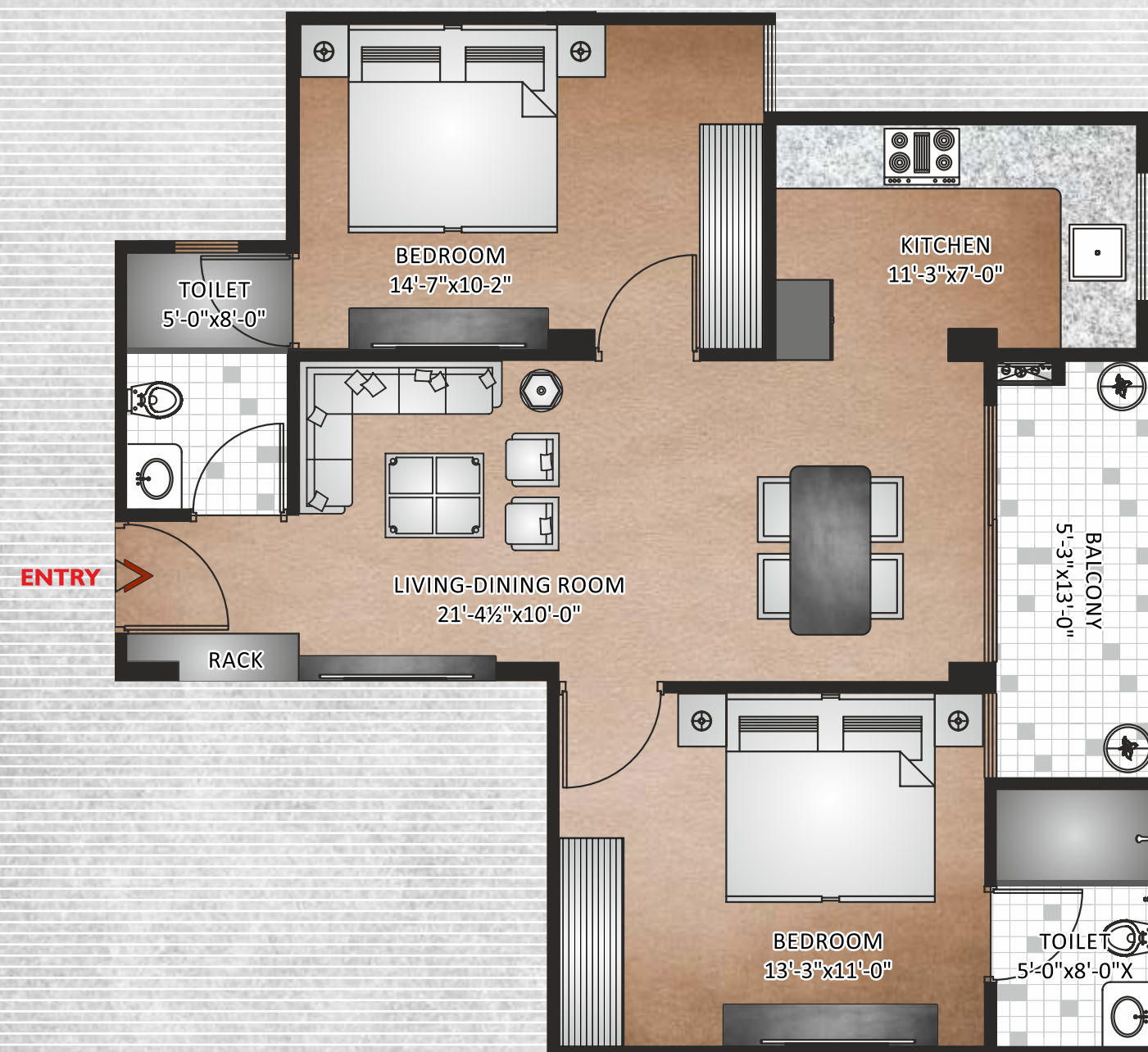
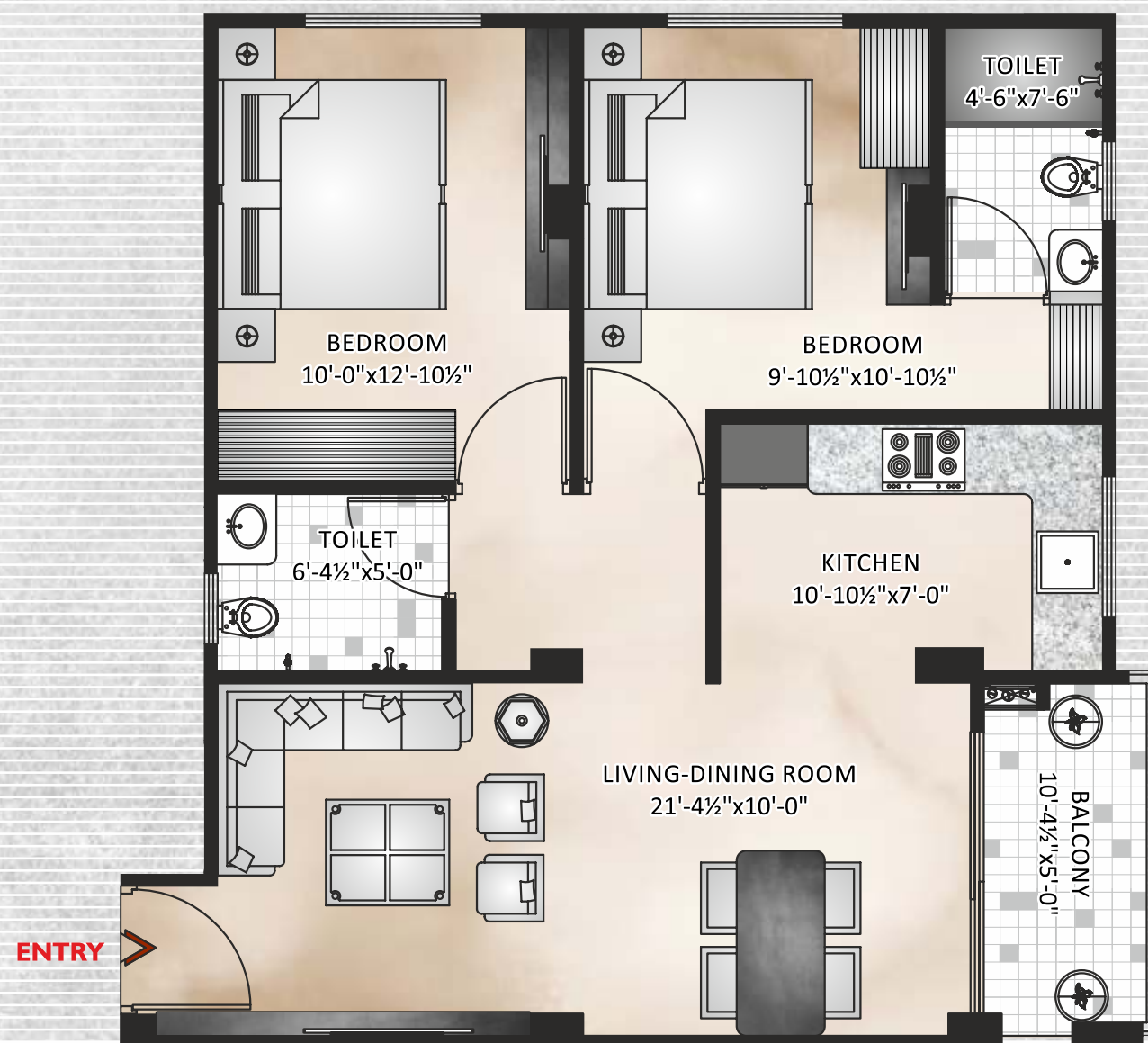


FLAT NO. 106-606  
3 RK



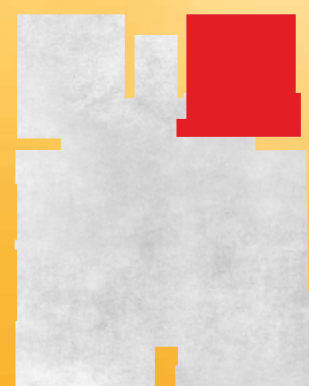
**RAM RESIDENCY**

3/4 RK Family Apartments



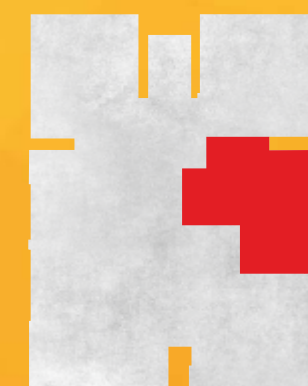
Artistic Impression

FLAT NO	BUILTUP AREA	CARPET AREA	BALCONY AREA	SALEABLE AREA
105-605	791.00	687.00	51.00	1052.00



Artistic Impression

FLAT NO	BUILTUP AREA	CARPET AREA	BALCONY AREA	SALEABLE AREA
106-606	838.00	716.00	68.00	1114.00





EVERY DAY,  
LIFE BEGINS AT HOME....



DRAWING &  
LIVING AREA



Home is a space that embraces your dreams, desires and expectations. Your living space at Ram Residency welcomes harmony as an inseparable part of your life everyday, each moment.

Enjoying a sumptuous dinner with the whole family is the highlight of the day. It is for this reason; we have created a spacious dining area. Now hosting a festive luncheon or a weekend dinner party for your friends will be a joy too.





KITCHEN &  
DINING AREA



COMFORTABLE  
BEDROOMS



A PRISTINE SPACE  
THAT'S A HAVEN  
OF COMFORT





# ITS ALL IN THE DETAILS...



## STRUCTURE

- Earthquake resistant RCC framed structure
- Appropriate fire fighting system and emergency exit through an extra staircase
- Energy efficient & eco friendly nominal design.

## APARTMENT FEATURES

- Vitrified Tiles/ Marble Flooring
- False ceiling in Drawing & Dining area
- POP finish on wall & ceiling
- Premium Quality Tractor emulsion paint on wall & ceiling
- Provision for split AC in Drawing / Dining & all Bedrooms

## WOOD WORK

- UPVC Windows having glass panels.
- Premium Quality Designer Flush Doors.
- Designer fittings on doors & windows.

## KITCHEN

- Semi Modular Kitchen
- Granite working counter
- Stainless steel sinks
- 2' Tiles dado above the counter
- Provision for geyser & R.O in kitchen

## WASHROOM

- Designer Ceramic tiles in toilet up to 7' height on wall
- Premium Ceramic Tiles on Floor in toilet
- Wall hung / Floor Mounted W.C. in Toilets
- Premium Quality C.P. fitting
- Premium Quality Sanitary Ware
- Counter Wash Basin

## ELECTRICAL

- Fire Retardant High Quality Wires & Cables
- Premium quality Modular Switches & Accessories
- Tv point in Living & bedroom area
- Provision for inverter.

## WATER SUPPLY

- Under Ground Water Tank For additional Water Storage
- Rain Water Harvesting System to Maintain Ground Water Level

## COMMON AMENITIES

- Two High Speed Lifts of Premium Brand
- Power Back-Up in Common Areas



Artistic Impression