



# KOWSALYA MANIDWEEPAM

Beauty to live in

LUXURY LIFESTYLE APARTMENTS  
@ NIZAMPET ROAD, BACHUPALLY



REFRESH,  
THE WAY YOU  
IMAGINED A HOME.



RERA Regn. No. P02200002912



FROM A   
NAME THAT'S  
DEDICATED TO YOU


Start refreshing the way you see life, look at the way homes are made differently, refresh your perspective of a home because here comes Sanvi Infra with Kowsalya Manidweepam, from a group of builders that comes with a vast experience. The group brings its experience of creating individual houses, apartments and several other types of projects. Here comes from them yet another home made with dedication and determination to give you the best.

KOWSALYA  
MANIDWEEPAM  
Beauty to live in



KOWSALYA  
MANIDWEEPAM

Beauty to live in

  
ENJOY  
WITH FAMILY  
IN GOOD  
ATMOSPHERE



KOWSALYA MANIDWEEPAM

MADE TO  
LAST STRONG  
VERY LONG

KOWSALYA  
MANIDWEEPAM  
Beauty to live in

# MASTER PLAN

# KOWSALYA MANIDWEEPAM

Beauty to live in

## LEGEND

- |                  |                        |                          |
|------------------|------------------------|--------------------------|
| 1. Entry         | 6. Courtyard Landscape | 11. Children's Play Area |
| 2. Driveway      | 7. Outdoor Fitness Gym | 12. Multipurpose Court   |
| 3. Roundabout    | 8. Designer Pergola    | 13. Linear Landscape     |
| 4. Cricket Pitch | 9. Seated Gallery      | 14. Jogging Track        |
| 5. Party Lawn    | 10. Badminton Court    |                          |



## EVERYTHING TO GIVE YOU COMFORTABLE LIVING

Kowsalya Manidweepam has a lot of good things such as plenty of open space, pleasant atmosphere, club house and much more. It is a residential community of three blocks of A, B and C. The residential arena has ample spaces to play, enjoy and live comfortably. Designed to give lot of ventilation, its a perfect place to live with privacy. It offers lot of recreation and social life options.



Towards Bachupally 'X' Roads

100'-0" Wide Road

Towards Nizampet

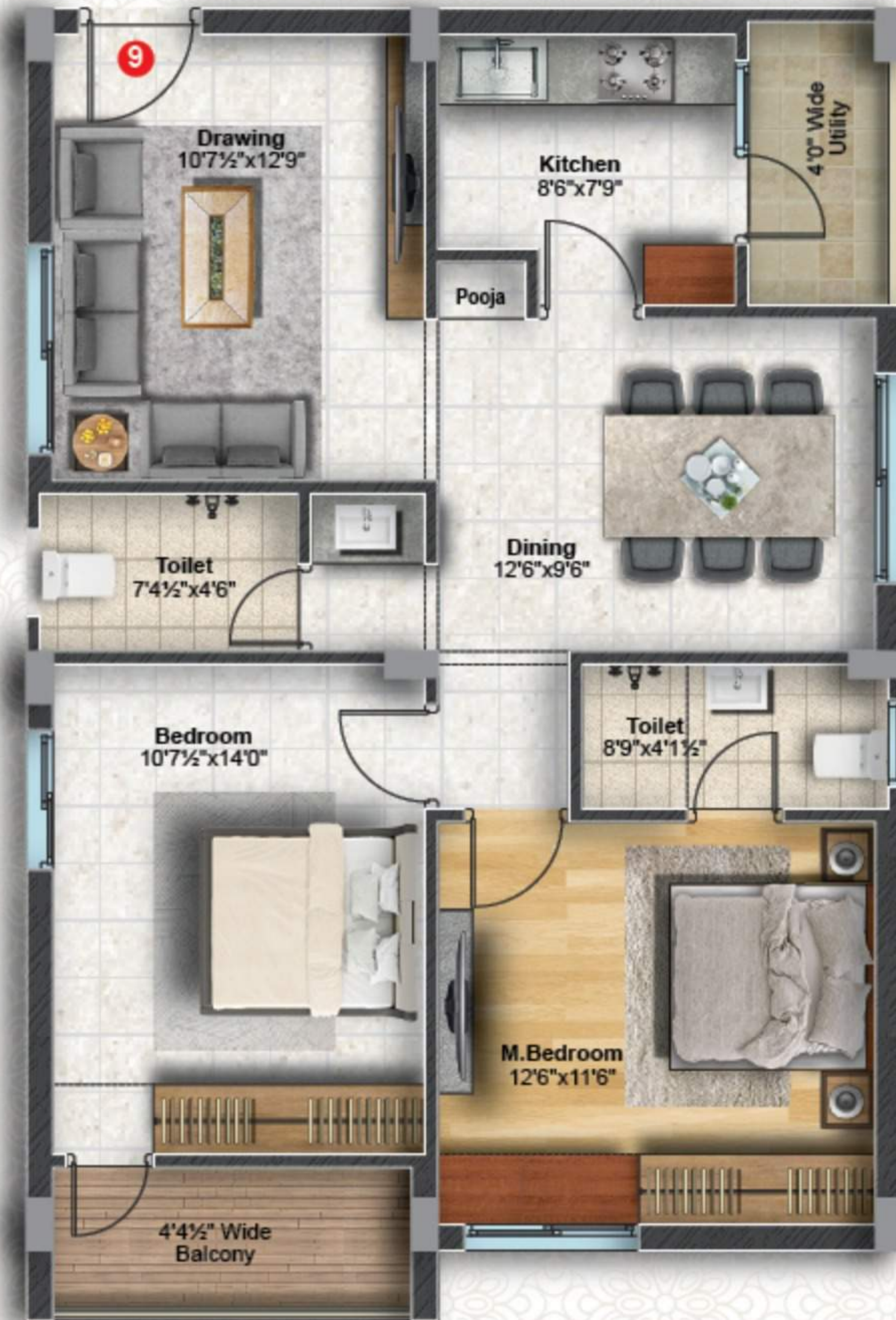


  
ENJOY THE  
NATURE'S BEAUTY  
AND ITS FRESHNESS

KOWSALYA  
MANIDWEEPAM  
Beauty to live in

DESIGNED TO  
VAASTHU IN  
EVERY CORNER

Kowsalya Manidweepam is a residential creation designed to be a communion of 3 BHK and 2 BHK flats with a whole lot of space and conveniences that come with immense planning. The 2 BHK flat area is of 1184 sft. We have ensured that all the flats and the entire community are designed according to Vaasthu without deviating from its principles. All in all, it has been designed to help the dwellers benefit from the wonderful living conditions it offers.



2 BHK  
2D VIEW  
EAST FACING  
FLAT NO. C-9



1184 SFT.

KOWSALYA  
MANIDWEEPAM

Beauty to live in

Living Space

- Entrance
- Drawing
- Living
- Dining
- Hand Wash
- Balcony

Kitchen System

- Kitchen
- Pooja
- Wash Area

Bedrooms

- Common Toilet
- M. Bedroom + Toilet
- Children's Bedroom

2 BHK

3D VIEW EAST FACING  
FLAT NO. C-9



**Living Space**

- Entrance
- Drawing
- Living
- Dining
- Hand Wash
- Balcony

**Kitchen System**

- Kitchen
- Pooja
- Wash Area

**Bedrooms**

- Common Toilet
- Bedroom + Toilet
- M. Bedroom + Toilet
- Children's Bedroom

# KOWSALYA MANIDWEEPAM

Beauty to live in

## 3 BHK

3D VIEW WEST FACING  
FLAT NO. C-27



## PLANNED TO BE NICELY SPACIOUS

At Kowsalya Manidweepam, the 3 BHK flats are of area 1832 sft. The best is we have designed every corner such that you can use it to the most. You can make it into a home of your dreams and desires.

3 BHK 2D VIEW  
WEST FACING  
FLAT NO. C-27



1832 SFT.



  
**YOUR OBJECT  
OF LONG LASTING  
ADMIRATION**

Kowsalya Manidweepam is designed to be a community that you will admire for a life time. It has been imagined such that the movement and momentum both inside and outside the community is easy and pleasant. It has been executed as per the HMDA's approved plan, giving the customers no reason for worry. It will be your thing of pride always.

**KOWSALYA  
MANIDWEEPAM**  
Beauty to live in





**MANY OPTIONS  
OF RECREATION  
AND FUN**

At Kowsalya Manidweepam, we have brought to you many options of leisure. Everyone from tiny tots to grandparents will have fun and recreation. There are amenities in every corner and of various types. We have thought about young professionals, couples with kids and have also provided a baby-care centre. Most of all, there is a club house. Here, you'll discover peaceful and comfort living in every aspect.

**AMENITIES & FEATURES**

- |  |   |  |  |
|--|---|--|--|
| <ul style="list-style-type: none"> <li>■ CC TV Surveillance</li> <li>■ 24 x 7 Security</li> <li>■ Children's Play Area</li> <li>■ Shuttle Court</li> <li>■ Basketball Court</li> </ul> | <ul style="list-style-type: none"> <li>■ Gym / Fitness</li> <li>■ Baby Care Centre Room</li> <li>■ Yoga / Meditation Room</li> <li>■ Skyview Swimming Pool</li> <li>■ Work Station Space</li> </ul> | <ul style="list-style-type: none"> <li>■ Doctor's Consultation Room</li> <li>■ Elders' Sitting Area (Outside)</li> <li>■ Solar Fencing for Compound Wall</li> <li>■ Pharmacy / Clinic Space</li> <li>■ Library Room</li> </ul> | <ul style="list-style-type: none"> <li>■ Office Space</li> <li>■ Food Court</li> <li>■ Supermarket</li> <li>■ Party Hall</li> <li>■ ATM Space</li> </ul> |
|--|---|--|--|





## CLUB HOUSE AMENITIES



Gym / Fitness Centre



Digital Games



Sky View Swimming Pool



Yoga / Meditation Room



Games Zone



Food Court



Badminton Court



Guest Rooms



Conference Hall



Pharmacy / Clinic



Stores



Bank's ATM



Party Hall



Baby Care Centre



Library

## THE COMPLETE LIVING COMMUNITY

Kowsalya Manidweepam is a home that offers you a lot of spaces and conveniences. There are plenty of amenities and facilities that we have provided. It has corners to socialise, spend time with family and have a bonding time with neighbours. There is everything from a super market to shuttle court.


KOWSALYA MANIDWEEPAM

KOWSALYA MANIDWEEPAM

ADMIRE THE  GOOD LOOKS EVEN  
IN THE SUNSET

KOWSALYA  
MANIDWEEPAM  
Beauty to live in



  
**THE BEST  
COMFORT OF  
LIVING AND  
STANDARD  
OF LIFE**



# KOWSALYA MANIDWEEPAM

Beauty to live in

SPECIFICATIONS		
<p><b>STRUCTURE</b> Earthquake resistant foundation with RCC framed structure</p>	<p><b>GRANITE &amp; KITCHEN</b> Granite platform with Stainless Steel sink Provision for Water Purifier and Chimney in the kitchen</p>	<p><b>GENERATOR</b> Generator power back-up for inside flats of all lights and fans, total common areas such as lifts, staircases, corridors, parking areas, children's play area and club house</p>
<p><b>PEST CONTROL TREATMENT</b> Pest control treatment for foundation and garden areas</p>	<p><b>GENERATOR</b> Generator power back-up for inside flats of all lights and fans, total common areas such as lifts, staircases, corridors, parking areas, children's play area and club house</p>	<p><b>CAR PARKING AREA</b> VDF flooring in Cellar and Driveways</p>
<p><b>SUPER STRUCTURE</b> Red bricks of best quality with cement mortar (outer walls of 9" and internal walls of 4½" thickness)</p> <p><b>PLASTERING</b> Plastering (Internal and External) in cement mortar in double coat with sponge finish</p>	<p><b>ELECTRICAL</b> Concealed PVC Pipes and Copper wiring with adequate points for Lights, Fans, Calling Bell, Refrigerator, TV, AC and Inverter. CABLE : FINECAB / ELLEYS make / ISI standard SWITCHES : ELLEYS / ANCHOR make / ISI standard</p>	<p><b>SEWAGE TREATMENT PLANT (STP)</b> Fully treated water made available through exclusive water softening and purification plant for bore well water  Treated sewage water will be used for landscaping and flush tanks</p>
<p><b>DOORS &amp; WINDOWS</b> Main Door and frame with teak wood and duly polished Providing GODREJ / EUROPA lock for Main Door Internal Doors are made of teak frames with designed flush shutters and fitted with ISI standard hardware All windows are of UPVC with sliding glass doors fitted with mosquito mesh and grills French doors and UPVC sliding door with glass in the balcony</p>	<p><b>PAINTING</b> Internal Walls with Asian / Birla Wall Care Putty and Tractor Emulsion Paint  All Corridors, Staircases and Common areas are of Asian / Birla Wall Care Putty with Paint  Texture Paint and Asian / Birla Wall Care Putty for building outside walls</p> <p><b>SANITARY</b> All sanitary items and CP fittings are of ELVIS / HINDWARE / CERA make / ISI standard</p>	<p><b>RAIN WATER HARVESTING PITS</b> Providing adequate rainwater harvesting pits for collecting and storing water for future productive use</p> <p><b>SECURITY</b> Intercom facility from flat to flat and flat to security and club house  CCTV cameras for common areas, club house and driveway</p>
<p><b>TILES FLOORING</b> Vitrified Tiles of size 800mm x 800mm of reputed make in Living Room, Dining and Bed Rooms. Anti-skid Vitrified Tiles in the Toilets, Utility areas and Balconies. Wooden designed Vitrified Tiles of 600mm x 600mm size in the Master Bedroom. Ceramic tiles upto 6'-0" height in the bathrooms. Tiles upto 2'-6" height glazed tiles in the kitchen.</p>	<p><b>WATER SUPPLY</b> Water from sumps to flats with Hydro Pneumatic System and Softener</p> <p><b>STAIRCASE &amp; CORRIDORS</b> Granite steps with SS railing in staircase and anti-skid tiles in corridors of standard make</p> <p><b>LIFTS</b> 8 Passengers capacity of Lifts - KONE make / ISI standard</p>	<p><b>NOTE</b> a) Shelves, Chajjas, Lofts, Arches or any kind of modifications / alterations are not allowed b) Flats will be handed over for wood work / interiors etc. only after delivery of possession c) Stamp Duty &amp; Registration Fee extra as applicable as per the Government norms d) GST extra as applicable as per the Government norms</p>



## LOCATION PLAN

(not to scale)



## PROXIMITY

### EDUCATIONAL INSTITUTIONS

Vikas Concept School	: 3 min
Vignan School	: 3 min
Sentia Global School	: 5 min
Kennedy / Silver Oaks	: 5 min
Sangamithra School	: 5 min
Ambitus School	: 10 min
Unicent School	: 10 min
Shikhara	: 10 min
International School	: 10 min
Delhi Public School	: 18 min
Oakridge	: 20 min
International School	: 20 min
Mamatha Medical College	: 5 min
Gokaraju Rangaraju	: 3 min
VNR - VJIE	: 10 min
JNTU	: 10 min

### HOSPITALS

SLG Hospital	: 2 min
Holistic Hospital	: 8 min
Rainbow Children Hospital (Near JNTU)	: 10 min

### OFFICES

Aurobindo Pharma	: 3 min
Dr. Reddy's Labs	: 3 min
Coco-Cola	: 5 min
Cyber Towers (HITEC City)	: 25 min
Wipro Circle	: 35 min
Financial District	: 35 min

### ENTERTAINMENT

Manjeera Mall	: 15 min
AMB Mall	: 15 min
Forum Mall	: 15 min
Inorbit Mall	: 30 min
IKEA	: 30 min

### TRANSPORTATION

Miyapur Bus Depot (Terminal)	: 15 min
Miyapur Metro	: 15 min
ORR	: 5 min

## EXCELLENT CONNECTIVITY FOR EVERY CONVENIENCE

Connectivity and convenience are the two important aspects that matter most when it comes to taking a decision for purchasing real estate. With Kowsalya Manidweepam located in Bachupally; life would be easiest than ever imagined. With its proximity to the Education Hub, IT Hub, Financial District, the choicest of options in education, healthcare, entertainment, supermarkets and a lot of many other options give yourself the gift of convenience.

# KOWSALYA MANIDWEEPAM

Beauty to live in