



Dev-Laksh
Pride

LAVISH RESIDENCES & COMMERCIAL SPACES



- Premium Offices of such class very rare but not out of grasp for the Chosen Few
- Palatial homes designed to perfection to become your Status Symbol
- Lavish spaces and structure designs that defines Your Being
- Elegant palace like spaces designed to make you feel the King/Queen of your Kingdom

Your Well Connected Grand World



Dev-Laksh *Pride*

Ultimate Address
World Class Living

Premium Structure,
Rich Design that symbolizes status and
amenities that deliver a grand lifestyle,
enriched with new ideas and thoughts, empowered to chart
a new evolved course of grand life.

Majestically located in the heart of the city
admist market place and all essentials in
Palghar West.





Lobby



Grand Entrance Lobby

Separate grand lobbies for both

Commercial and Residential,

Step into the grand lobby that is well decorated,

well equipped with modern facilities,

Welcome your guests in style to mark

an everlasting impression.



Office / Commercial



Separate Entrance Lobby for Commercial

Separate branded automated elevator for offices,

Well decorated and efficient staircase access to all office units,

Ample parking for 2 & 4 wheelers,

Earthquake resistant RCC structure in TATA/JSW

Steel and Ultratech Cement Only,

Rain Water Harvest,

CCTV cameras at essential points,

Common Washroom facility at all levels,

Ample and Efficient Electric points in each unit.





Opulent Living Room



**Intelligently Crafted Maximised Interior Space
with Ample Light and Ventilation.**

600 x 600 Double Charged Vitrified Tiles,

Main Door with Veneer,

Teakwood Frame and Lock,

Video Door Phone,

Concealed Wiring and Electric Points,

Plastic Emulsion Paint on Internal Walls,

Anodised Aluminium French Windows
with Saint Gobain Glass.





Lavish Bedrooms



**Exquisite Bedroom bedecked with
attached bathroom and
Amenities to pamper yourself.**

Wooden finish flooring for master bedroom,

600x600 Double Charged Vitrified tiles in other bedroom,

Attractive Wooden frames for doors,

Flush Door with laminates,

Window frames finished with Marble/Granite,

Anodized Aluminium French windows with "Saint Gobain" glass,

Plastic emulsion paint on internal walls.





Hassle Free Kitchen



**A flawless setting for your cooking.
Now enjoy preparing your culinary delights with
the hassle free movement needed for efficiency.**

Modular Kitchen Fittings,

600x600 Double Charged Vitrified Flooring and

Dado Tiles above counter-top,

Granite platform in kitchen with stainless steel sink,

Concealed wiring with modular switches,

Good quality sanitary ware with branded C.P. fittings,

Reverse Osmosis water purifier (R.O. Purifier),

Internal walls with smooth finished gypsum plaster,

Plastic emulsion paint on internal walls,

Concealed Gas Connection line on countertop.





Rejuvenating Bathroom



**Enjoy an invigorating shower,
a soother bath in your plush king-size bathroom.
Thoughtfully designed bathrooms
for your convenience.**

Dado wall tiles and Anti skid tiles for flooring,

Concealed wiring with modular switches,

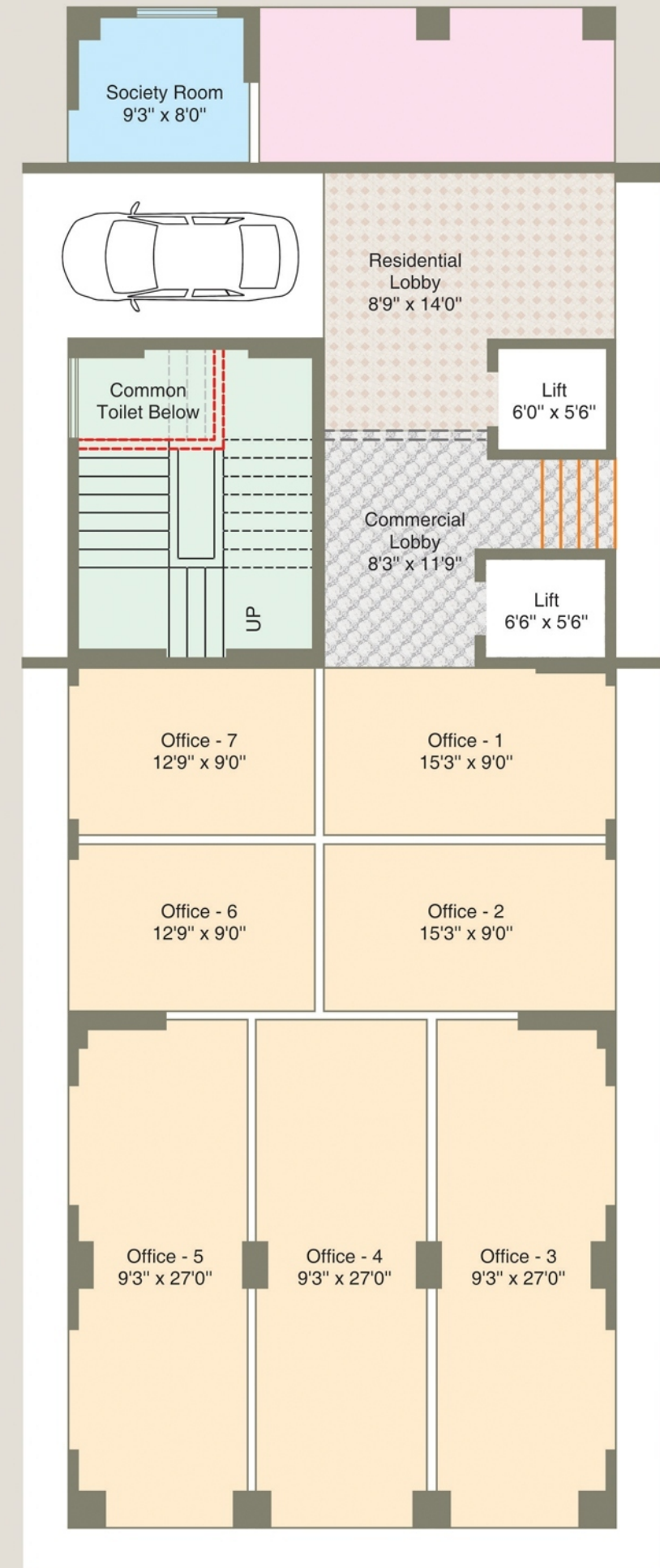
Jaguar, Grohe, Kohler or

equivalent brand C.P. Fittings,

Geyser.

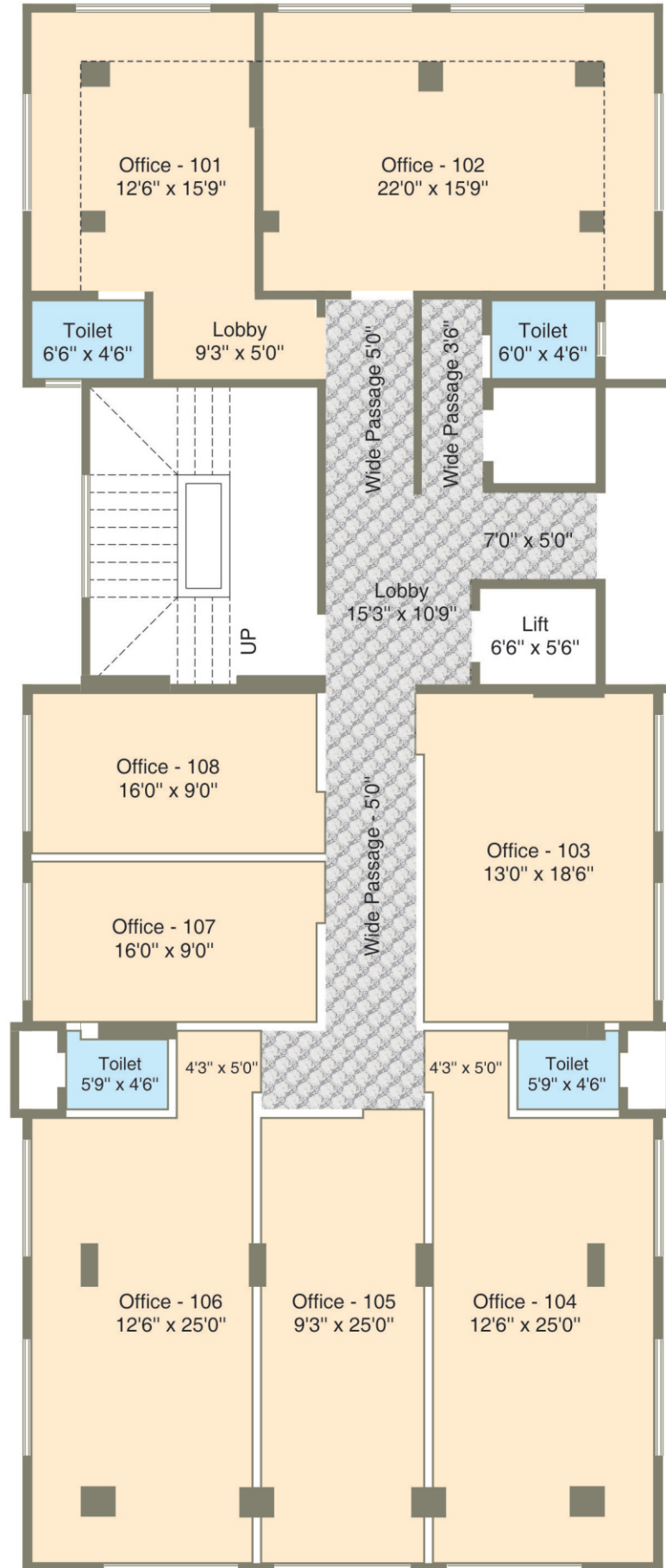


LAYOUT

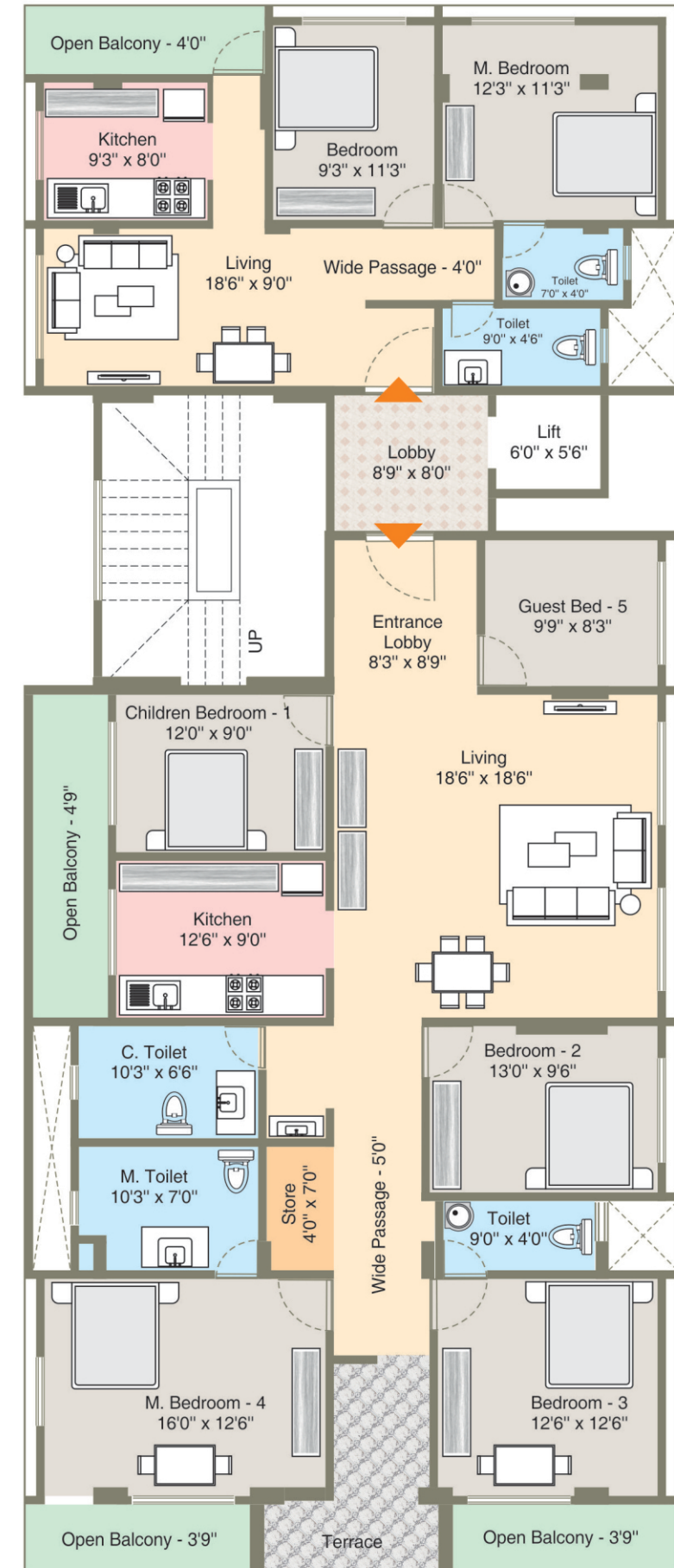


GROUND FLOOR



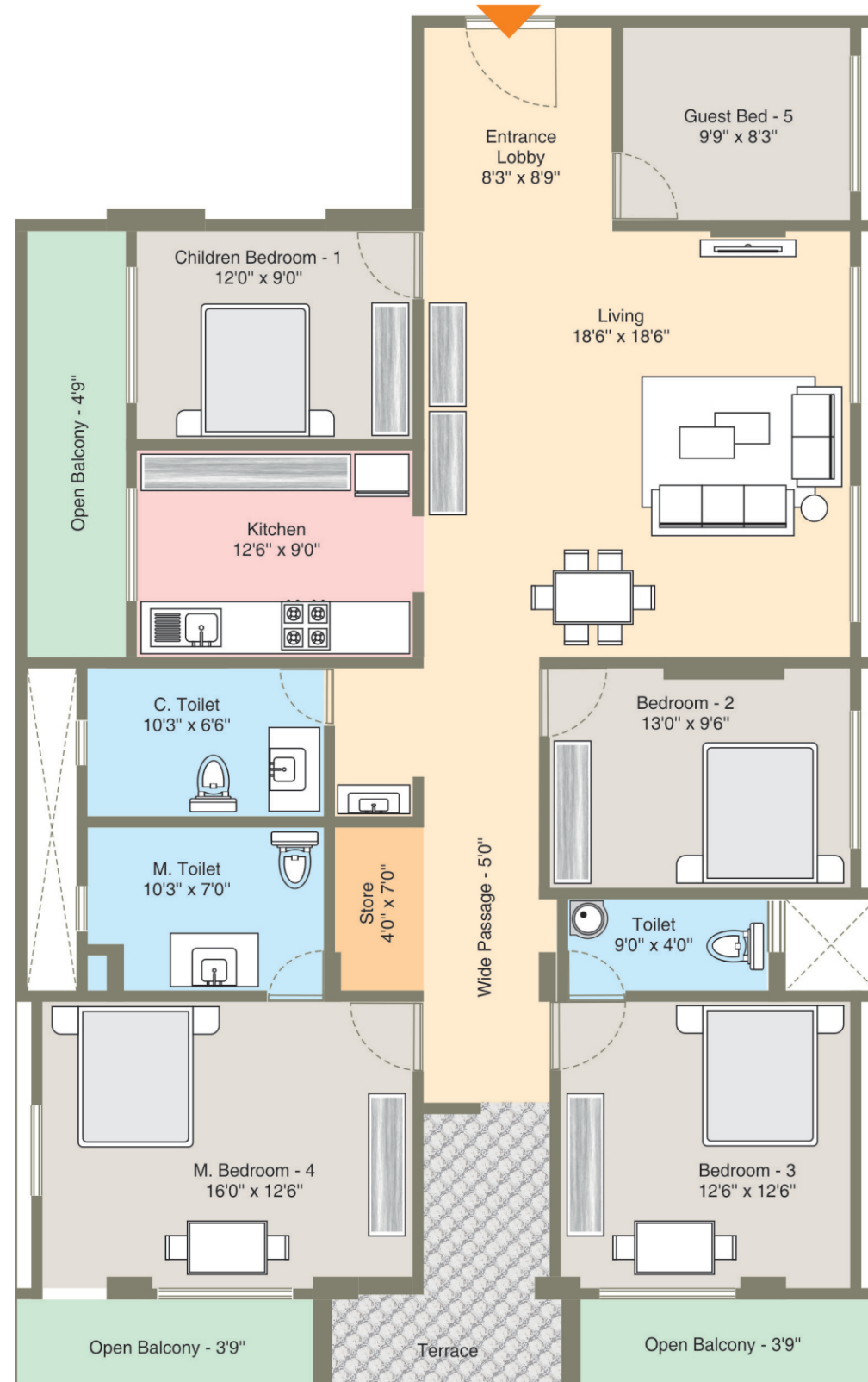


1ST & 2ND FLOOR UNIT PLAN

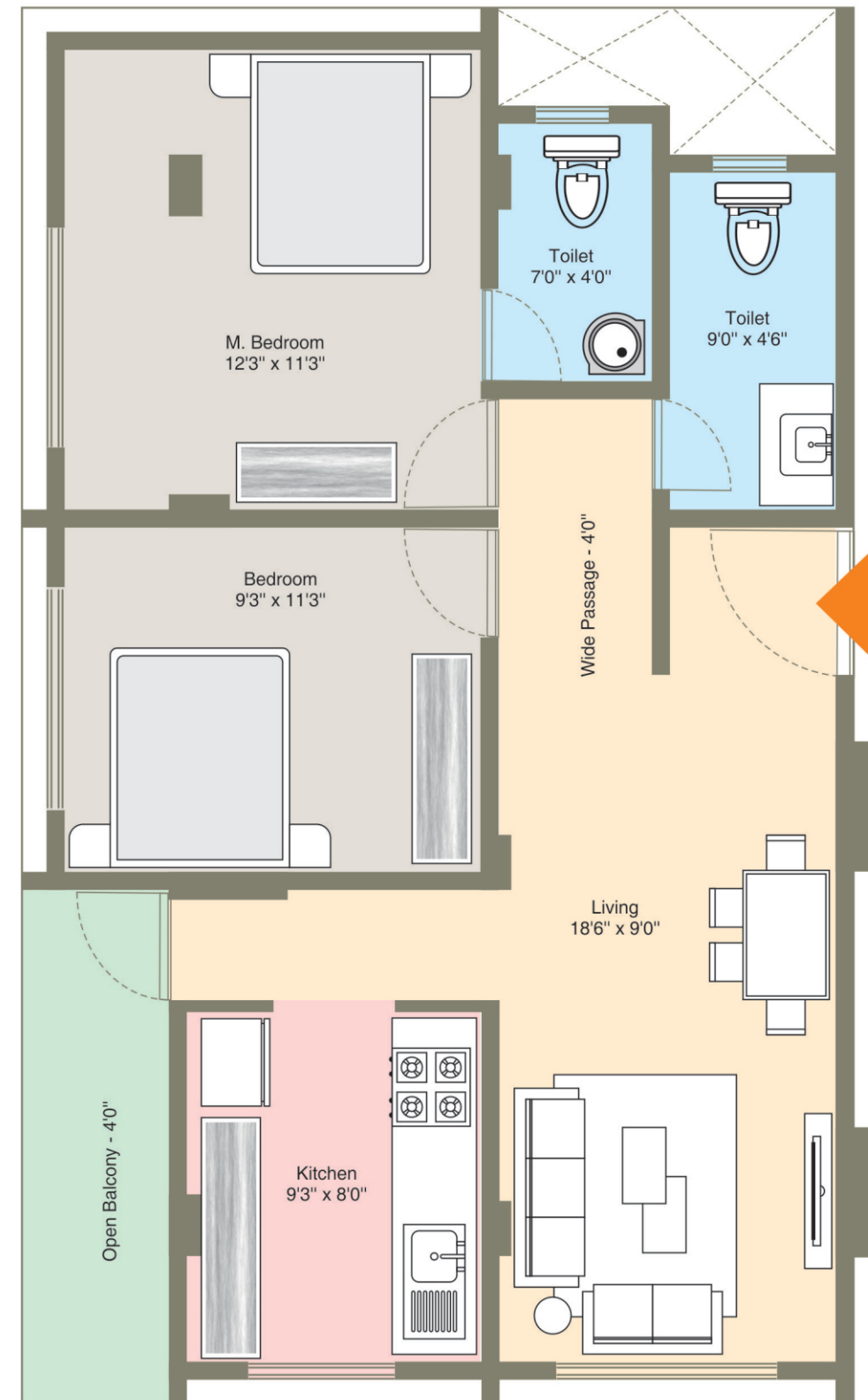


3RD TO 7TH FLOOR UNIT PLAN





5 BHK UNIT PLAN

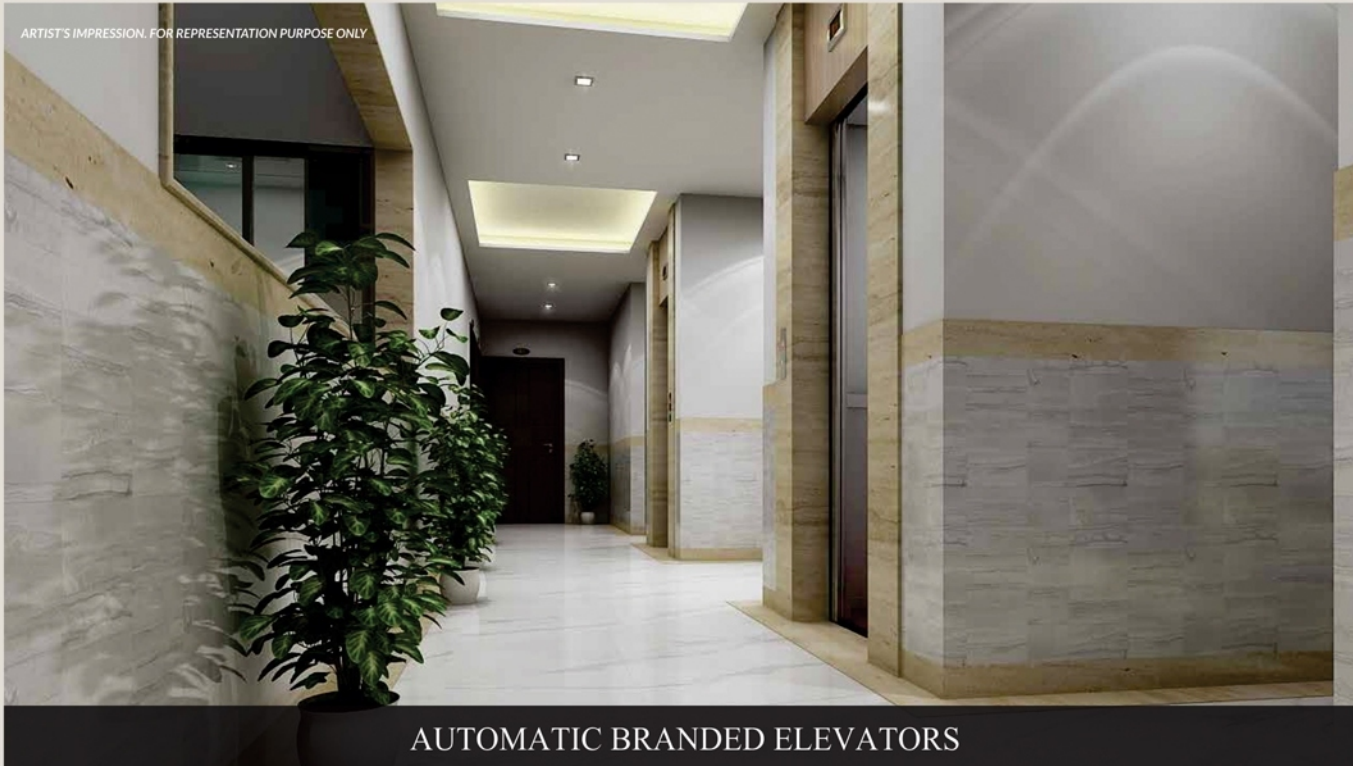


2 BHK UNIT PLAN





Facilities





LAVISH RESIDENCES
&
COMMERCIAL SPACES

