



Guruchhaya

APARTMENT

A blissful life awaits...



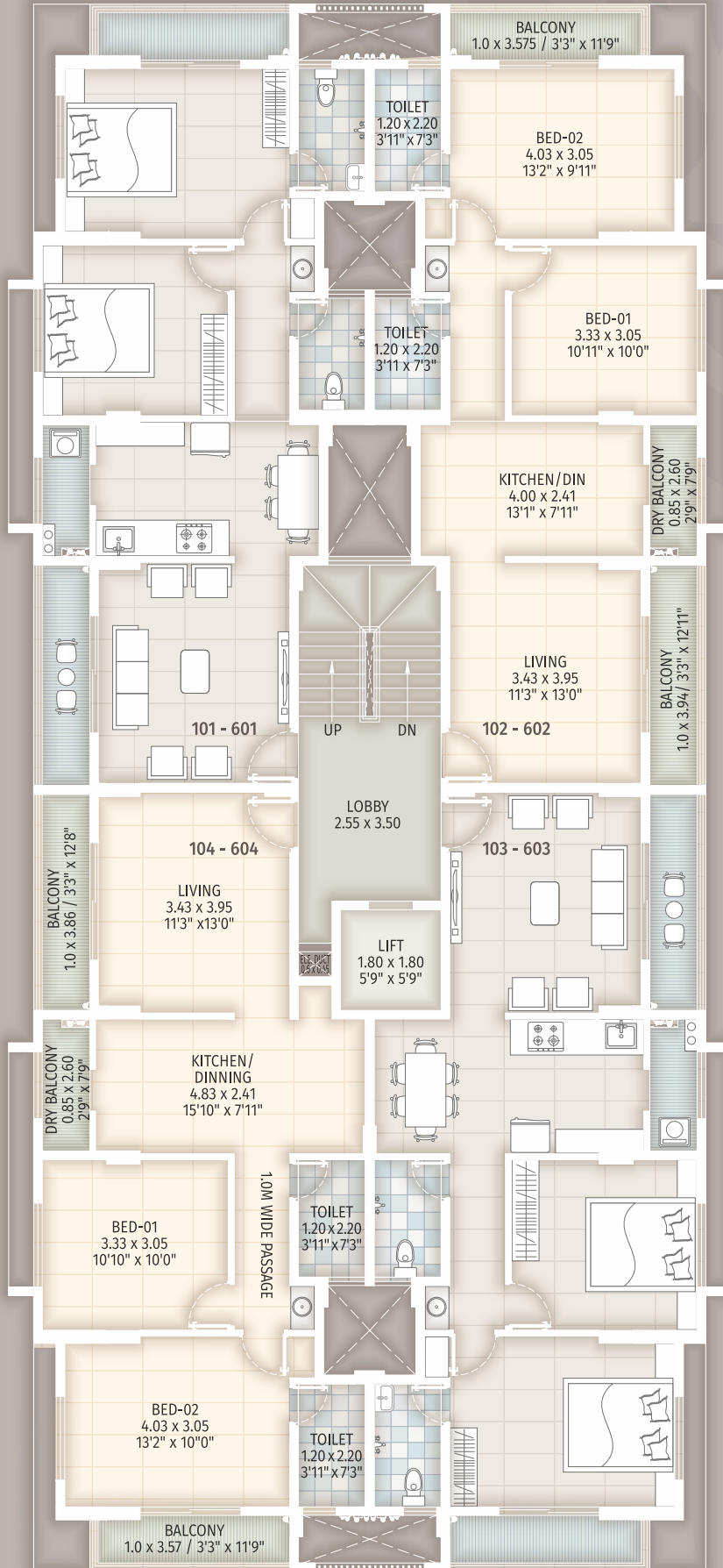
Guruchhaya

APARTMENT

2 BHK LUXURIOUS FLATS



1st to 6th FLOOR PLAN



CUT SECTION



Amenities



CCTV surveillance
for common areas



Lift with ARD
System & Power Backup



Rain water
Harvesting



Solar water
Heater



SPECIFICATIONS

- Earthquake resistant R.C.C. framed structure.
- External walls 6" thick and internal walls 4" thick in AAC Block.
- Sand faced plaster externally & Neeru finished plaster internally.



DOORS :

- A) 30 mm thick both side laminated flush door shutters with laminated plywood door frame for hall & bedrooms with cylindrical lock.
 - B) For Toilet granite door frame and 30 mm thick both side laminated flush door shutters along with cylindrical lock.
 - C) GI Powder coated glazed door for balcony of living room & bedroom.
- 600 mm x 600 mm. vitrified tiles for flooring & 75 mm height skirting for living / passage, kitchen, bedrooms and balconies.
 - Color glazed tiles dado up to 7ft height & anti-skid ceramic tiles for flooring in bathroom, terrace and dry balcony.
 - Granite top kitchen platform, with stainless steel sink & 2 ft. high glazed dado tiles above platform.
 - CPVC Concealed plumbing with hot & cold mixer arrangement in bathroom with standard make CP Fittings and Sanitary fittings.



ELECTRIFICATION & CABELING :

- A) Concealed copper wiring with modular switches in all flats.
 - B) Provision of telephone and T.V point in Living room.
- Powder coated three track Aluminum sliding windows with mosquito mesh and oil painted M.S. fabricated safety grill.



PAINTING :

- A) Oil bond distemper painting for internal walls & Ceiling of all rooms.
 - B) Acrylic paint from outside.
- Water proofing treatment in brick bats to top terrace of buildings.

