

Say hello to the
Future
It awaits
you here...

ITREND
FUTURA
2 & 3 BHK FUTURE READY HOMES





CommItted to Building Future Spaces

Saheel Properties, with close to one and half decades of extensive experience in real estate, has always adhered to the principles of trust, transparency and total integrity while delivering iconic projects across key locations of Pune. Futuristic Designs, Architecture way ahead of the contemporary standards, Top Quality Construction, Smart Space Planning and Timely Delivery have been the pillars of success for Saheel Properties. Kohinoor Group since 1983, has stood tall as a leading realty brand in Pune's real estate sector.

Under the path-breaking and evolutionary concept of ITREND Homes, both the stalwarts have come together for envisioning the future in Baner NX. These two have made wonders in the past and now they are all set to transform the perception of living with the most advanced technology-led innovations.



14+

YEARS OF
EXPERIENCE

1.5

MILLION SQ. FT.
DELIVERED

3.3

MILLION SQ. FT.
ONGOING

1+

MILLION SQ. FT.
UPCOMING

**Embrace
the future,**

**Live
smarter!**

At iTrend Futura, in a mesmerising locale of 6 acres, we have envisaged a future-ready life attuned with the best of innovative features and technologically advanced amenities. In 6 high-rise towers touching the sky, the primary focus is on your total convenience by exploiting every single possibility of making use of smart innovation and new-age automation. Thus, ensuring the best of comfort for every member of the family at every hour of the day. You would experience improved quality of life at every touchpoint and interface.

iTREND
FUTURA
2 & 3 BHK FUTURE READY HOMES



A strategic location where living will be happier day-by-day!



Mahalunge, Baner NX

The address of a promising future

Mahalunge's close proximity with the Phase 1 of the Hinjawadi IT hub, makes this fast-developing suburb a preferred hotspot. No wonder it has become a residential paradise for IT professionals. The Bypass is just a few minutes away. So, access to neighbouring upmarket localities like Baner, Aundh, Wakad, Pashan, Bavdhan is easy. Due to which exotic & happening destinations of Shopping, Entertainment, Fine-Dine, Recreation; are within easy reach. Upcoming Metro lines will add a lot of comfort to the connectivity and will also save valuable time of commuting.



A Concept Living Called 'Future-Ready Homes'

A futuristic viewpoint about life is driven by changes. Life changes in every passing moment. Our priorities & preferences change, our aspirations evolve. We have become a lot wiser and smarter post pandemic. Now, we precisely know what we expect from our new home, isn't it? A home that is in tune with the changing times, a home that has everything we require in the future, a home built with the ultramodern & hi-tech facilities and amenities! This is the core concept of 'Future-Ready Home'...



Motion Sensor Lighting System in Bathrooms



Special Digital Door Lock



Automated Geyser Point



Switchless Touch Panels



App Enabled Fully Automated Homes

Live the life to the fullest

Living in Baner NX comes with many strategic advantages. The surrounding is an established locale that encourages you to lead an active & happening life full of fun, fiestas and celebrations. It is known for trendy restaurants & exotic fine-dine places. You would also be blessed by multiple destinations for shopping & entertainment. Renowned international schools, institutions are nearby. And high-profile commercial hubs too!



*Artist's Impression



Amenity Legends

Open Space Amenities

1. CLUB HOUSE
 - ▶ MULTIPURPOSE HALL
 - ▶ PODCAST STUDIO WITH MUSIC ROOM
 - ▶ LIBRARY WITH READING ZONE
 - ▶ YOGA AND MEDITATION SPACE
2. WALKWAY
3. CALESTHENICS
4. MEDITATION PODS
5. LAWN
6. DIGITAL CLASSROOM
7. FORESTED AREA
8. PLAY AREA (CLIMBING WALL)
9. NATURE SCULPTURE
10. ENTRANCE PLAZA
11. FESTIVE COURT
12. PETS PARK
13. SECURITY CABIN
14. EXHIBITION GROUND
15. OXYGEN PARK / ORCHARD
16. BUS PICK UP & DROP OFF
17. CYCLE TRACK
18. SENSORIAL PLAY PARK

Podium Amenities

1. CLUB HOUSE
 - ▶ GYMNASIUM
 - ▶ INDOOR GAMES
 - ▶ SKY LOUNGE
2. ENTRANCE COURT
3. CHANGING ROOM
4. DECK AND SUNKEN BAR
5. SWIMMING POOL AND AQUA GYM
6. KIDS POOL
7. LOUNGE
8. WATER FEATURE
9. FLAG POLE AND STAGE
10. PARTY LAWN
11. URBAN KATTA
12. CHILDREN PLAY AREA
13. MULTIPURPOSE PLAY COURT
14. BOX CRICKET
15. YOGA COURT
16. STAR GAZING DECK
17. PERIPHERAL WALKWAY



Experience Ecstasy in Every Moment

Amenities have been smartly designed around living to amplify the ecstasy & euphoria of every moment for every member of the family. iTrend Futura is an unmatched vision of future-ready life. If you had ever thought of something that your home should have, be assured you would find it here...in the most exotic way! These amenities are leagues ahead of the contemporary standards. And they will take your lifestyle to a great new level...





Infinity Calisthenics Court



Wing Suites



CoLab Corner



Audio Verse Studio



Spa Suites



Starlight Screen



Sunken Oasis



Eco Digital Classroom

Diversified amenity infrastructure

It's time to take leisure to a great new level. Celebrate unforgettable moments with friends, family and self too. Make every occasion a memorable experience. Explore various places earmarked for unwinding. Plentifully complementing the premium luxury inside the plush homes, a set of finest amenity zones dedicated to a wide range of activities, will add colours to your lifestyle. In fact, you will consider yourself lucky to have such a diversified amenity infrastructure that is truly first-in-the-vicinity!



Cage Cricket



Water Workout Area



Meditation Spot



Cycle Circuit



Yoga Studio



Green Field



Starlight Sanctuary



Creative Corner



Relaxation Station



Future Reads



Jungle Haven



Urban Amphitheater

A bundle of unmatched satisfaction!

Going a level up in terms of safety, security, status and social infrastructure, is the core idea of a new home. If you think it should fulfil all your needs and aspirations, iTrend Futura is offering a lot more in every possible manner. The location is an enviable address for the future. The creation reflects innovation in every aspect, the more you experience, the more you would realise. The homes have been futuristically designed, so all your aspirations would be exceedingly fulfilled. Smart set of amenities and advanced features will add loads of convenience to your living. All these unique characteristics make a home here a bundle of unmatched satisfaction....!



Party Lawn



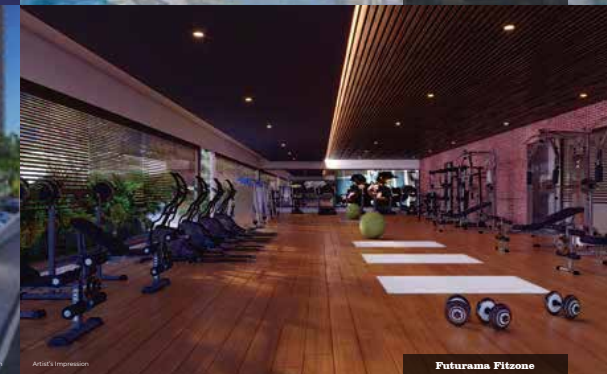
Future Play



Swimming Pool



High Street Retail



Futurama Fitzone



Tenting Area



Musical Studio



Music Grove



Petropolis



BBQ Junction



Oxygen Oasis



Blossom Babies



Seating Area



The Gateway



Event Emporium



Convenient Bridges



Wingwise Visitor Parking

Specifications

Structure

- ▶ RCC framed earthquake resistant structure

Flooring

- ▶ 800 mm X 1600 mm vitrified flooring in living, dining, kitchen & bedrooms
- ▶ 600 mm X 600 mm wooden finish vitrified tiles in master bedroom
- ▶ Anti-skid flooring tiles in toilets & utility
- ▶ Anti-skid wooden finish tiles in attached terraces
- ▶ Designer glazed tiles for toilets, kitchen & utility dado
- ▶ Artificial stone/Granite platform with stainless steel sink in kitchen
- ▶ Granite stone platform with table top basin in toilets
- ▶ Granite window frame in toilets & utility

Automation

- ▶ Digital video door phone
- ▶ Automation system – lights, fans, geysers on automation (Flat automation – one switch board and all its points on automation in every room except toilets & all balconies)
- ▶ Combination of switchless touch panels & branded modular switches
- ▶ Sensor based lights in all toilets
- ▶ Video door phone
- ▶ Digital door lock (Finger print sensor & numerical)

Internal Finish

- ▶ Ceiling & wall putty finish plaster with semi acrylic paint in living, kitchen, utility & bedrooms
- ▶ Grid false ceiling in toilets

External Finish

- ▶ Acrylic texture paint on external walls

Plumbing

- ▶ CPVC concealed supply plumbing in kitchen, utility & toilets
- ▶ SWR PVC slung plumbing for drainage & storm water in kitchen, utility, toilets & terraces
- ▶ Branded CP & sanitary fittings in toilets
- ▶ Washing machine point provision in utility
- ▶ Separate stainless-steel sink in utility for washing

Door & frames

- ▶ Laminated door frames for main & bedroom doors
- ▶ Granite plus laminated door frames for toilets
- ▶ Laminated moulded door shutters with digital lock for main door
- ▶ Laminated moulded door shutters with mortise lock for bedroom & toilet doors
- ▶ 3 Track aluminium sliding doors with mosquito net for living & bedroom terrace doors

Electrical

- ▶ Concealed copper wiring with modular switches
- ▶ TV & telephone point in living & master bedroom
- ▶ Exhaust fan provision in kitchen & toilets
- ▶ AC point provision in living & all bedrooms
- ▶ Inverter point provision
- ▶ Geyser point provision in toilets
- ▶ Wi-fi point provision in living passage area
- ▶ Fridge, chimney, aquaguard & washing machine point provision in kitchen

Windows

- ▶ 3 Track aluminium sliding windows with mosquito net
- ▶ Aluminium louvered window in toilets with exhaust provision
- ▶ Designer toughened glass railing in living & bed room terraces

Common Area Features

- ▶ Automatic elevators
- ▶ Power backup for common areas
- ▶ Decorative entrance lobby on ground floor
- ▶ Provision for car charging (At extra cost - optional)

Solar system

- ▶ Solar PV system for common area

Security system

- ▶ CCTV in common areas
- ▶ Fire alarm system



A glimpse of your future space





UNIT PLANS

2 BHK - A

TOTAL CARPET AREA

669 Sq. ft.

TREND

FUTURA
2 & 3 BHK FUTURE READY HOMES



2 BHK - B

TOTAL CARPET AREA

726 Sq. ft.



2 BHK - C

TOTAL CARPET AREA

776 Sq. ft.



3 BHK - A

TOTAL CARPET AREA

987 Sq. ft.



Dry Balcony
8'0" X 3'0"

Toilet
7'0" X 4'6"

Toilet
7'6" X 4'6"

Master
Bedroom
13' X 11'

Balcony
11'0" X 2'9"



Lobby
5'6" X 3'3"

PoojaUnit

Dining
5'3" X 6'6"

Study
Table

Kitchen
9'6" X 8'0"

Living
18' X 10'6"

Bedroom
12' X 10'3"

Toilet
7' X 4'6"

Balcony
10'6" x 4'

Guest/Kids
Bedroom
11'3" X 10'

3 BHK - B	
TOTAL CARPET AREA	120 Sq. ft

3 BHK - B	
TOTAL CARPET AREA	120 Sq. ft

3 BHK - B	
TOTAL CARPET AREA	120 Sq. ft



Simplex unit 2+2

TOTAL CARPET AREA 1342 Sq. ft



Floor Plans

Tower A & B

Tower A & B

Typical floor plan

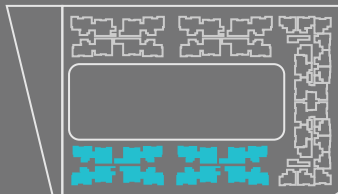


Unit No.	Type	Carpet Area		Balcony		Dry Balcony		Total Carpet Area	
		Sq.m	Sq.ft	Sq.m	Sq.ft	Sq.m	Sq.ft	Sq.m	Sq.ft
101,102,301,401,501,601, 701,901,1001,1101,1201, 1401,1501,1601,1701, 1901,2001,2101,2201, 2401,2501,2601,2701	2BHK-C	63.50	683.51	6.29	67.71	2.29	24.65	72.08	776
102,202, 302,402,502,602,702,902,1002,1102,1202, 1402,1502,1602,1702,1902,2002,2102,2202, 2402,2502,2602,2702	3BHK-B	92.83	999.22	8.86	95.37	2.34	25.19	104.03	1120
203,303,403,503,603, 703,903,1003,1103,1203, 1403,1503,1603,1703,1903,2003,2103,2203, 2403,2503,2603,2703	3BHK-A	82.69	890.08	6.77	72.87	2.20	23.68	91.66	987
204,304,404,504,604,704,904,1004,1104,1204, 1404,1504,1604,1704,1904,2004,2104,2204, 2404,2504,2604,2704	2BHK-C	63.50	683.51	6.29	67.71	2.29	24.65	72.08	776
205,305,405,505,605,705,905,1005,1105,1205, 1405,1505,1605,1705,1905,2005,2105,2205, 2405,2505,2605,2705	2BHK-C	63.50	683.51	6.29	67.71	2.29	24.65	72.08	776
206,306,406,506,606,706,906,1006,1106,1206, 1406,1506,1606,1706,1906,2006,2106,2206, 2406,2506,2606,2706	3BHK-A	82.69	890.08	6.77	72.87	2.20	23.68	91.66	987
107,207,307,407,507,607,707,907,1007,1107,1207, 1407,1507,1607,1707,1907,2007,2107,2207, 2407,2507,2607,2707	3BHK-B	92.83	999.22	8.86	95.37	2.34	25.19	104.03	1120
108,208,308,408,508,608,708,908,1008,1108,1208, 1408,1508,1608,1708,1908,2008,2108,2208, 2408,2508,2608,2708	2BHK-C	63.50	683.51	6.29	67.71	2.29	24.65	72.08	776



Tower A & B

Refuge 8th Floor

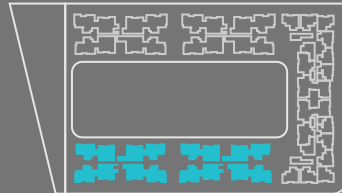


Tower A & B									
Unit No.	Type	Carpet Area		Balcony		Dry Balcony		Total Carpet Area	
		Sq.m	Sq.ft	Sq.m	Sq.ft	Sq.m	Sq.ft	Sq.m	Sq.ft
801	2BHK-C	63.50	683.51	6.29	67.71	2.29	24.65	72.08	776
802	3BHK-B	92.83	999.22	8.86	95.37	2.34	25.19	104.03	1120
803	3BHK-A	82.69	890.08	6.77	72.87	2.20	23.68	91.66	987
Refuge Area (Co-Working Spaces)									
805	2BHK-C	63.50	683.51	6.29	67.71	2.29	24.65	72.08	776
806	3BHK-A	82.69	890.08	6.77	72.87	2.20	23.68	91.66	987
807	3BHK-B	92.83	999.22	8.86	95.37	2.34	25.19	104.03	1120
808	2BHK-C	63.50	683.51	6.29	67.71	2.29	24.65	72.08	776



Tower A & B

Refuge 13th Floor



Tower A & B									
Unit No.	Type	Carpet Area		Balcony		Dry Balcony		Total Carpet Area	
		Sq.m	Sq.ft	Sq.m	Sq.ft	Sq.m	Sq.ft	Sq.m	Sq.ft
1301	2BHK-C	63.50	683.51	6.29	67.71	2.29	24.65	72.08	776
1302	3BHK-B	92.83	999.22	8.86	95.37	2.34	25.19	104.03	1120
1303	3BHK-A	82.69	890.08	6.77	72.87	2.20	23.68	91.66	987
Refuge Area (Guest Room & SPA)									
1305	2BHK-C	63.50	683.51	6.29	67.71	2.29	24.65	72.08	776
1306	3BHK-A	82.69	890.08	6.77	72.87	2.20	23.68	91.66	987
1307	3BHK-B	92.83	999.22	8.86	95.37	2.34	25.19	104.03	1120
1308	2BHK-C	63.50	683.51	6.29	67.71	2.29	24.65	72.08	776



Tower A & B

Refuge 18th Floor

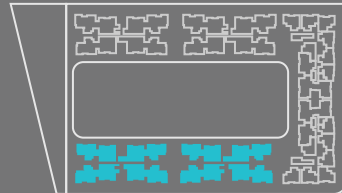


Tower A & B									
Unit No.	Type	Carpet Area		Balcony		Dry Balcony		Total Carpet Area	
		Sq.m	Sq.ft	Sq.m	Sq.ft	Sq.m	Sq.ft	Sq.m	Sq.ft
1801	2BHK-C	63.50	683.51	6.29	67.71	2.29	24.65	72.08	776
1802	3BHK-B	92.83	999.22	8.86	95.37	2.34	25.19	104.03	1120
1803	3BHK-A	82.69	890.08	6.77	72.87	2.20	23.68	91.66	987
Refuge Area (Guest Room 1 & 2)									
1805	2BHK-C	63.50	683.51	6.29	67.71	2.29	24.65	72.08	776
1806	3BHK-A	82.69	890.08	6.77	72.87	2.20	23.68	91.66	987
1807	3BHK-B	92.83	999.22	8.86	95.37	2.34	25.19	104.03	1120
1808	2BHK-C	63.50	683.51	6.29	67.71	2.29	24.65	72.08	776



Tower A & B

Refuge 23rd Floor



Tower A & B									
Unit No.	Type	Carpet Area		Balcony		Dry Balcony		Total Carpet Area	
		Sq.m	Sq.ft	Sq.m	Sq.ft	Sq.m	Sq.ft	Sq.m	Sq.ft
2301	2BHK-C	63.50	683.51	6.29	67.71	2.29	24.65	72.08	776
2302	3BHK-B	92.83	999.22	8.86	95.37	2.34	25.19	104.03	1120
2303	3BHK-A	82.69	890.08	6.77	72.87	2.20	23.68	91.66	987
Refuge Area									
2305	2BHK-C	63.50	683.51	6.29	67.71	2.29	24.65	72.08	776
2306	3BHK-A	82.69	890.08	6.77	72.87	2.20	23.68	91.66	987
2307	3BHK-B	92.83	999.22	8.86	95.37	2.34	25.19	104.03	1120
2308	2BHK-C	63.50	683.51	6.29	67.71	2.29	24.65	72.08	776



Floor Plans

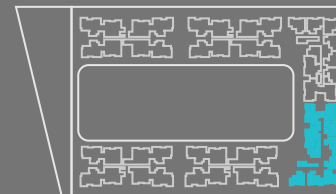
Tower C

Tower C

Typical floor plan

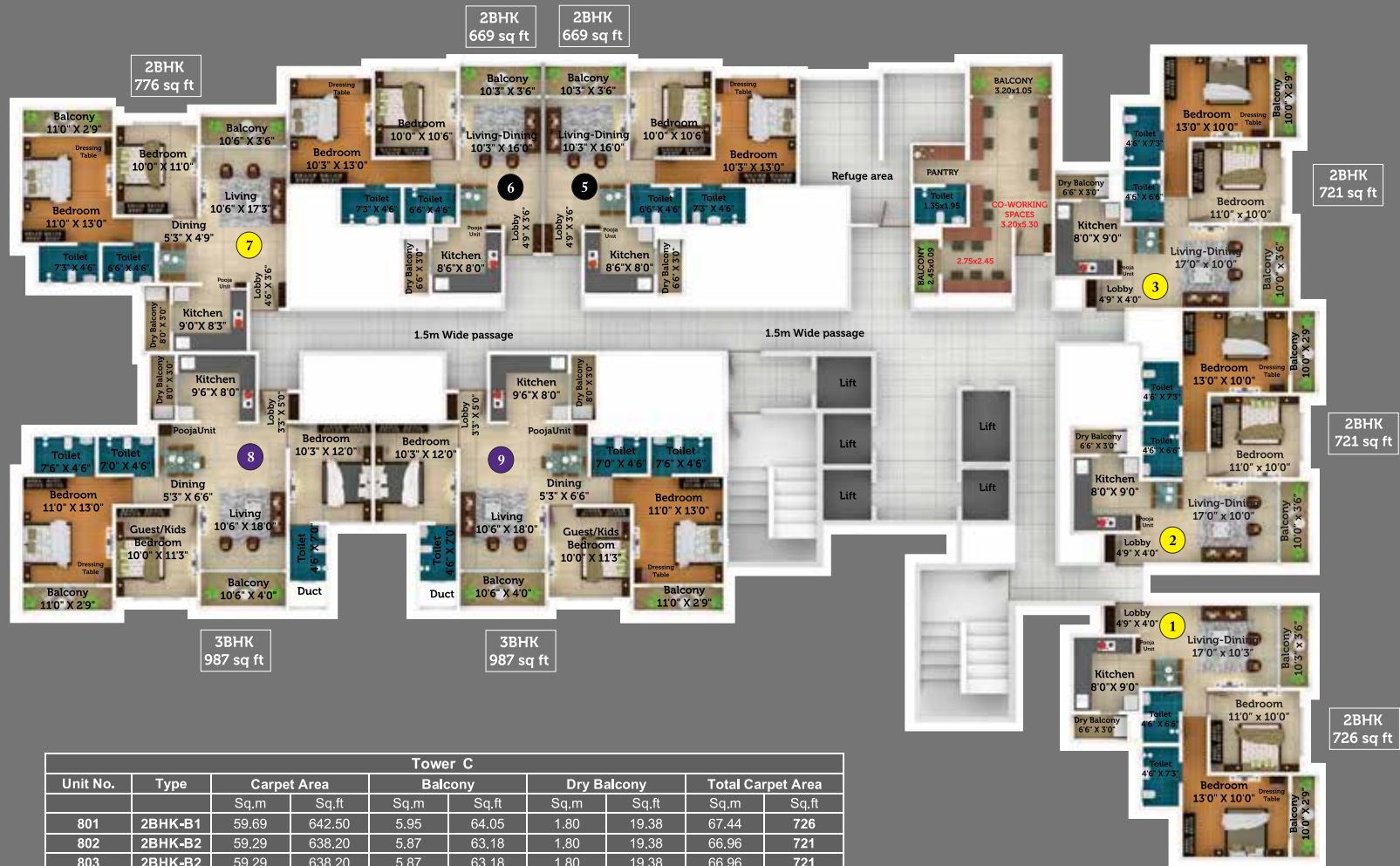


Unit No.	Type	Carpet Area		Balcony		Dry Balcony		Total Carpet Area	
		Sq.m	Sq.ft	Sq.m	Sq.ft	Sq.m	Sq.ft	Sq.m	Sq.ft
201,301,401,501,601,701,801,901,1001,1101,1201 1401,1501,1601,1701,1901,2001,2101,2201 2401,2501,2601,2701	2BHK-B1	59.69	642.50	5.95	64.05	1.80	19.38	67.44	726
202,302,402,502,602,702,802,902,1002,1102,1202,1402 1502,1602,1702,1902,2002,2102,2202,2402 2502,2602,2702	2BHK-B2	59.29	638.20	5.87	63.18	1.80	19.38	66.96	721
203,303,403,503,603,703,803,903,1003,1103,1203,1403 1503,1603,1703,1903,2003,2103,2203,2403 2503,2603,2703	2BHK-B2	59.29	638.20	5.87	63.18	1.80	19.38	66.96	721
104,204,304,404,504,604,704,804,904,1004,1104,1204 1404,1504,1604,1704,1904,2004,2104,2204,2404 2504,2604,2704	2BHK-A	57.11	614.73	3.26	35.09	1.80	19.38	62.17	669
105,205,305,405,505,605,705,805,905,1005,1105,1205 1405,1505,1605,1705,1905,2005,2105,2205,2405 2505,2605,2705	2BHK-A	57.11	614.73	3.26	35.09	1.80	19.38	62.17	669
106,206,306,406,506,606,706,806,906,1006,1106,1206 1406,1506,1606,1706,1906,2006,2106,2206,2406 2506,2606,2706	2BHK-A	57.11	614.73	3.26	35.09	1.80	19.38	62.17	669
107,207,307,407,507,607,707,807,907,1007,1107,1207 1407,1507,1607,1707,1907,2007,2107,2207,2407 2507,2607,2707	2BHK-C	63.50	683.51	6.29	67.71	2.29	24.65	72.08	776
108,208,308,408,508,608,708,808,908,1008,1108,1208 1408,1508,1608,1708,1908,2008,2108,2208,2408 2508,2608,2708	3BHK-A	82.69	890.08	6.77	72.87	2.20	23.68	91.66	987
109,209,309,409,509,609,709,809,909,1009,1109,1209 1409,1509,1609,1709,1909,2009,2109,2209,2409 2509,2609,2709	3BHK-A	82.69	890.08	6.77	72.87	2.20	23.68	91.66	987

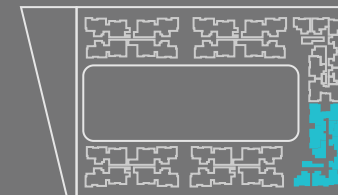


Tower C

Refuge 8th Floor



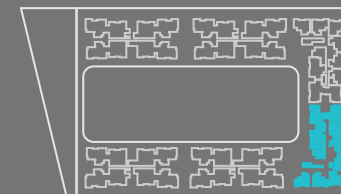
Tower C									
Unit No.	Type	Carpet Area		Balcony		Dry Balcony		Total Carpet Area	
		Sq.m	Sq.ft	Sq.m	Sq.ft	Sq.m	Sq.ft	Sq.m	Sq.ft
801	2BHK-B1	59.69	642.50	5.95	64.05	1.80	19.38	67.44	726
802	2BHK-B2	59.29	638.20	5.87	63.18	1.80	19.38	66.96	721
803	2BHK-B2	59.29	638.20	5.87	63.18	1.80	19.38	66.96	721
Refuge Area (Co- Working Spaces)									
805	2BHK-A	57.11	614.73	3.26	35.09	1.80	19.38	62.17	669
806	2BHK-A	57.11	614.73	3.26	35.09	1.80	19.38	62.17	669
807	2BHK-C	63.50	683.51	6.29	67.71	2.29	24.65	72.08	776
808	3BHK-A	82.69	890.08	6.77	72.87	2.20	23.68	91.66	987
809	3BHK-A	82.69	890.08	6.77	72.87	2.20	23.68	91.66	987



Tower C
Refuge 13th Floor



Tower C									
Unit No.	Type	Carpet Area		Balcony		Dry Balcony		Total Carpet Area	
		Sq.m	Sq.ft	Sq.m	Sq.ft	Sq.m	Sq.ft	Sq.m	Sq.ft
1301	2BHK-B1	59.69	642.50	5.95	64.05	1.80	19.38	67.44	726
1302	2BHK-B2	59.29	638.20	5.87	63.18	1.80	19.38	66.96	721
1303	2BHK-B2	59.29	638.20	5.87	63.18	1.80	19.38	66.96	721
Refuge Area (Guest Room & SPA)									
1305	2BHK-A	57.11	614.73	3.26	35.09	1.80	19.38	62.17	669
1306	2BHK-A	57.11	614.73	3.26	35.09	1.80	19.38	62.17	669
1307	2BHK-C	63.50	683.51	6.29	67.71	2.29	24.65	72.08	776
1308	3BHK-A	82.69	890.08	6.77	72.87	2.20	23.68	91.66	987
1309	3BHK-A	82.69	890.08	6.77	72.87	2.20	23.68	91.66	987

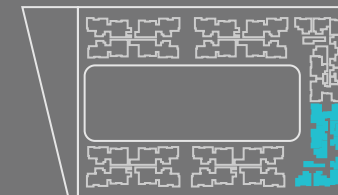


Tower C

Refuge 18th Floor



Tower C									
Unit No.	Type	Carpet Area		Balcony		Dry Balcony		Total Carpet Area	
		Sq.m	Sq.ft	Sq.m	Sq.ft	Sq.m	Sq.ft	Sq.m	Sq.ft
1801	2BHK-B1	59.69	642.50	5.95	64.05	1.80	19.38	67.44	726
1802	2BHK-B2	59.29	638.20	5.87	63.18	1.80	19.38	66.96	721
1803	2BHK-B2	59.29	638.20	5.87	63.18	1.80	19.38	66.96	721
Refuge Area (Guest Room 1 & 2)									
1805	2BHK-A	57.11	614.73	3.26	35.09	1.80	19.38	62.17	669
1806	2BHK-A	57.11	614.73	3.26	35.09	1.80	19.38	62.17	669
1807	2BHK-C	63.50	683.51	6.29	67.71	2.29	24.65	72.08	776
1808	3BHK-A	82.69	890.08	6.77	72.87	2.20	23.68	91.66	987
1809	3BHK-A	82.69	890.08	6.77	72.87	2.20	23.68	91.66	987

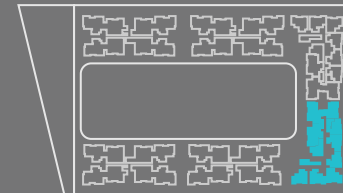


Tower C

Refuge 23rd Floor



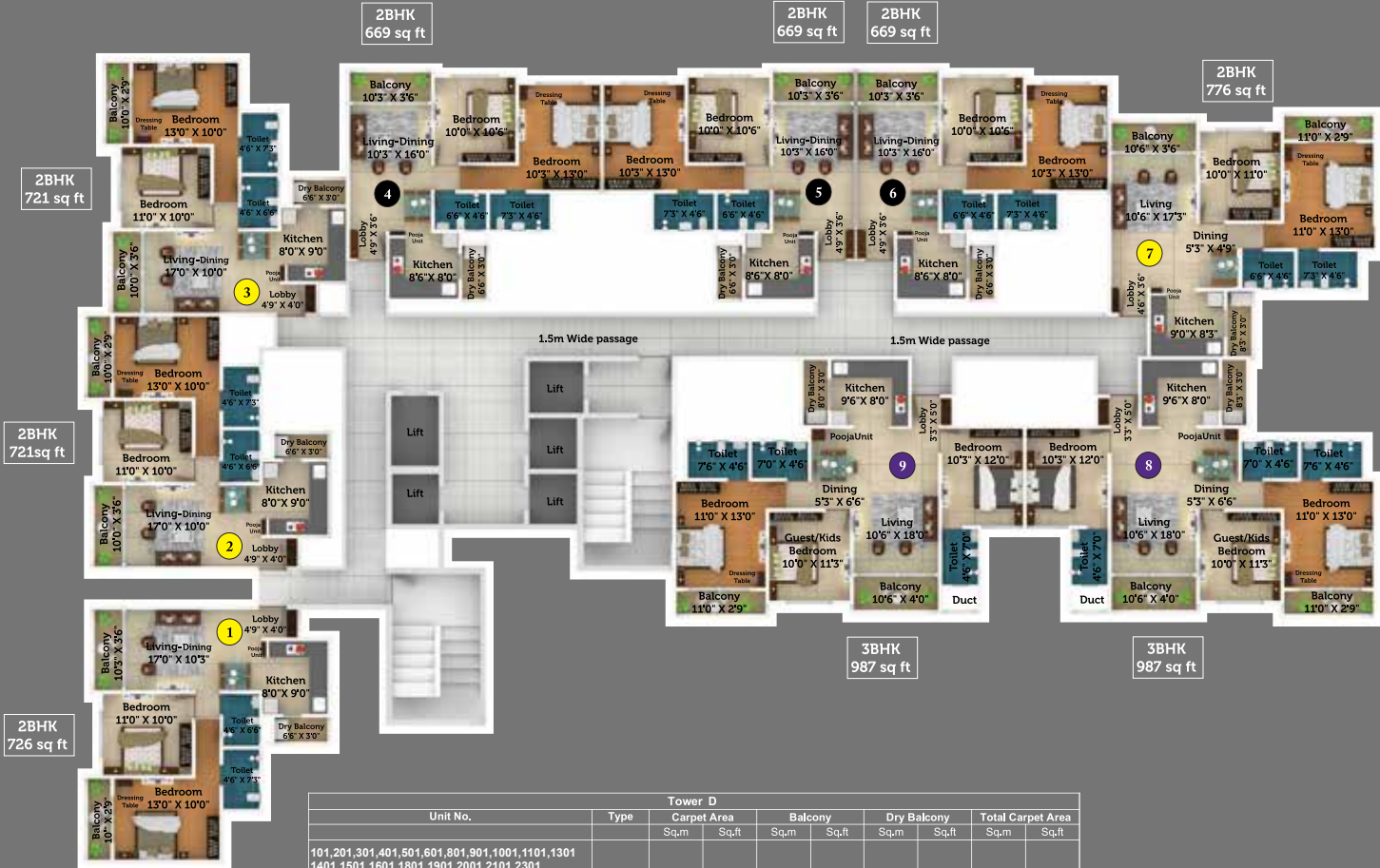
Tower C									
Unit No.	Type	Carpet Area		Balcony		Dry Balcony		Total Carpet Area	
		Sq.m	Sq.ft	Sq.m	Sq.ft	Sq.m	Sq.ft	Sq.m	Sq.ft
2301	2BHK-B1	59.69	642.50	5.95	64.05	1.80	19.38	67.44	726
2302	2BHK-B2	59.29	638.20	5.87	63.18	1.80	19.38	66.96	721
2303	2BHK-B2	59.29	638.20	5.87	63.18	1.80	19.38	66.96	721
Refuge Area									
2305	2BHK-A	57.11	614.73	3.26	35.09	1.80	19.38	62.17	669
2306	2BHK-A	57.11	614.73	3.26	35.09	1.80	19.38	62.17	669
2307	2BHK-C	63.50	683.51	6.29	67.71	2.29	24.65	72.08	776
2308	3BHK-A	82.69	890.08	6.77	72.87	2.20	23.68	91.66	987
2309	3BHK-A	82.69	890.08	6.77	72.87	2.20	23.68	91.66	987



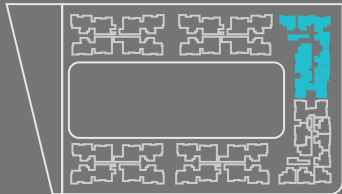
Floor Plans

Tower D

Tower D
Typical floor plan



Unit No.	Type	Tower D							
		Carpet Area		Balcony		Dry Balcony		Total Carpet Area	
		Sq.m	Sq.ft	Sq.m	Sq.ft	Sq.m	Sq.ft	Sq.m	Sq.ft
101,201,301,401,501,601,801,901,1001,1101,1301 1401,1501,1601,1801,1901,2001,2101,2301 2401,2501	2BHK-B1	59,69	642,50	5,95	64,05	1,80	19,38	67,44	726
102,202,302,402,502,602,802,902,1002,1102,1302 1402,1502,1602,1802,1902,2002,2102,2302 2402,2502	2BHK-B2	59,29	638,20	5,87	63,18	1,80	19,38	66,96	721
103,203,303,403,503,603,803,903,1003,1103,1303 1403,1503,1603,1803,1903,2003,2103,2303 2403,2503	2BHK-B2	59,29	638,20	5,87	63,18	1,80	19,38	66,96	721
104,204,304,404,504,604,804,904,1004,1104,1304 1404,1504,1604,1804,1904,2004,2104,2304 2404,2504	2BHK-A	57,11	614,73	3,26	35,09	1,80	19,38	62,17	669
105,205,305,405,505,605,805,905,1005,1105,1305 1405,1505,1605,1805,1905,2005,2105,2305 2405,2505	2BHK-A	57,11	614,73	3,26	35,09	1,80	19,38	62,17	669
106,206,306,406,506,606,806,906,1006,1106,1306 1406,1506,1606,1806,1906,2006,2106,2306 2406,2506	2BHK-A	57,11	614,73	3,26	35,09	1,80	19,38	62,17	669
107,207,307,407,507,607,807,907,1007,1107,1307 1407,1507,1607,1807,1907,2007,2107,2307 2407,2507	2BHK-C	63,50	683,51	6,29	67,71	2,29	24,65	72,08	776
108,208,308,408,508,608,808,908,1008,1108,1308 1408,1508,1608,1808,1908,2008,2108,2308 2408,2508	3BHK-A	82,69	890,08	6,77	72,87	2,20	23,68	91,66	987
109,209,309,409,509,609,809,909,1009,1109,1309 1409,1509,1609,1809,1909,2009,2109,2309 2409,2509	3BHK-A	82,69	890,08	6,77	72,87	2,20	23,68	91,66	987

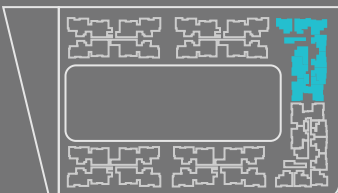


Tower D

Refuge 7th Floor



Tower D									
Unit No.	Type	Carpet Area		Balcony		Dry Balcony		Total Carpet Area	
		Sq.m	Sq.ft	Sq.m	Sq.ft	Sq.m	Sq.ft	Sq.m	Sq.ft
701	2BHK-B1	59.69	642.50	5.95	64.05	1.80	19.38	67.44	726
702	2BHK-B2	59.29	638.20	5.87	63.18	1.80	19.38	66.96	721
703	2BHK-B2	59.29	638.20	5.87	63.18	1.80	19.38	66.96	721
Refuge Area (Co- Working Spaces)									
705	2BHK-A	57.11	614.73	3.26	35.09	1.80	19.38	62.17	669
706	2BHK-A	57.11	614.73	3.26	35.09	1.80	19.38	62.17	669
707	2BHK-C	63.50	683.51	6.29	67.71	2.29	24.65	72.08	776
708	3BHK-A	82.69	890.08	6.77	72.87	2.20	23.68	91.66	987
709	3BHK-A	82.69	890.08	6.77	72.87	2.20	23.68	91.66	987

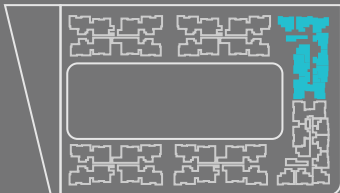


Tower D

Refuge 12th Floor



Tower D									
Unit No.	Type	Carpet Area		Balcony		Dry Balcony		Total Carpet Area	
		Sq.m	Sq.ft	Sq.m	Sq.ft	Sq.m	Sq.ft	Sq.m	Sq.ft
1201	2BHK-B1	59.69	642.50	5.95	64.05	1.80	19.38	67.44	726
1202	2BHK-B2	59.29	638.20	5.87	63.18	1.80	19.38	66.96	721
1203	2BHK-B2	59.29	638.20	5.87	63.18	1.80	19.38	66.96	721
Refuge Area(Guest Room & SPA)									
1205	2BHK-A	57.11	614.73	3.26	35.09	1.80	19.38	62.17	669
1206	2BHK-A	57.11	614.73	3.26	35.09	1.80	19.38	62.17	669
1207	2BHK-C	63.50	683.51	6.29	67.71	2.29	24.65	72.08	776
1208	3BHK-A	82.69	890.08	6.77	72.87	2.20	23.68	91.66	987
1209	3BHK-A	82.69	890.08	6.77	72.87	2.20	23.68	91.66	987

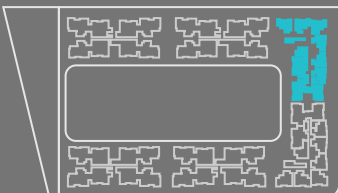


Tower D

Refuge 17th Floor



Tower D									
Unit No.	Type	Carpet Area		Balcony		Dry Balcony		Total Carpet Area	
		Sq.m	Sq.ft	Sq.m	Sq.ft	Sq.m	Sq.ft	Sq.m	Sq.ft
1701	2BHK-B1	59.69	642.50	5.95	64.05	1.80	19.38	67.44	726
1702	2BHK-B2	59.29	638.20	5.87	63.18	1.80	19.38	66.96	721
1703	2BHK-B2	59.29	638.20	5.87	63.18	1.80	19.38	66.96	721
Refuge Area(Guest Room 1 & 2)									
1705	2BHK-A	57.11	614.73	3.26	35.09	1.80	19.38	62.17	669
1706	2BHK-A	57.11	614.73	3.26	35.09	1.80	19.38	62.17	669
1707	2BHK-C	63.50	683.51	6.29	67.71	2.29	24.65	72.08	776
1708	3BHK-A	82.69	890.08	6.77	72.87	2.20	23.68	91.66	987
1709	3BHK-A	82.69	890.08	6.77	72.87	2.20	23.68	91.66	987

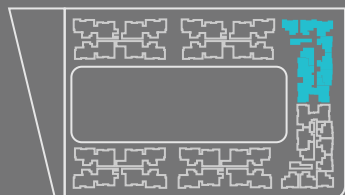


Tower D

Refuge 22nd Floor



Tower D									
Unit No.	Type	Carpet Area		Balcony		Dry Balcony		Total Carpet Area	
		Sq.m	Sq.ft	Sq.m	Sq.ft	Sq.m	Sq.ft	Sq.m	Sq.ft
2201	2BHK-B1	59.69	642.50	5.95	64.05	1.80	19.38	67.44	726
2202	2BHK-B2	59.29	638.20	5.87	63.18	1.80	19.38	66.96	721
2203	2BHK-B2	59.29	638.20	5.87	63.18	1.80	19.38	66.96	721
Refuge Area									
2205	2BHK-A	57.11	614.73	3.26	35.09	1.80	19.38	62.17	669
2206	2BHK-A	57.11	614.73	3.26	35.09	1.80	19.38	62.17	669
2207	2BHK-C	63.50	683.51	6.29	67.71	2.29	24.65	72.08	776
2208	3BHK-A	82.69	890.08	6.77	72.87	2.20	23.68	91.66	987
2209	3BHK-A	82.69	890.08	6.77	72.87	2.20	23.68	91.66	987

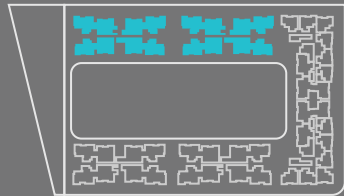


Floor Plans

Tower E & F

Tower E & F

Typical Floor Plan



Tower E									
Unit No.	Type	Carpet Area		Balcony		Dry Balcony		Total Carpet Area	
		Sq.m	Sq.ft	Sq.m	Sq.ft	Sq.m	Sq.ft	Sq.m	Sq.ft
101,201,301,401,501,601, 801,901,1001,1101,1301, 1401,1501,1601,1801, 1901,2001,2101,2301, 2401,2501	2BHK-C	63.50	683.51	6.29	67.71	2.29	24.65	72.08	776
102,202,302,402,502,602,802,902,1002,1102,1302, 1402,1502,1602,1802,1902,2002,2102,2302, 2402,2502	3BHK-B	92.83	999.22	8.86	95.37	2.34	25.19	104.03	1120
103,203,303,403,503,603, 803,903,1003,1103,1303, 1403,1503,1603,1803, 1903,2003,2103,2303, 2403,2503	3BHK-B	92.83	999.22	8.86	95.37	2.34	25.19	104.03	1120
104,204,304,404,504,604,804,904,1004,1104,1304, 1404,1504,1604,1804,1904,2004,2104,2304, 2404,2504	2BHK-C	63.50	683.51	6.29	67.71	2.29	24.65	72.08	776
105,205,305,405,505,605,805,905,1005,1105,1305, 1405,1505,1605,1805,1905,2005,2105,2305, 2405,2505	2BHK-C	63.50	683.51	6.29	67.71	2.29	24.65	72.08	776
106,206,306,406,506,606,806,906,1006,1106,1306, 1406,1506,1606,1806,1906,2006,2106,2306, 2406,2506	3BHK-B	92.83	999.22	8.86	91.30	2.34	25.19	104.03	1120
107,207,307,407,507,607,807,907,1007,1107,1307, 1407,1507,1607,1807,1907,2007,2107,2307, 2407,2507	3BHK-B	92.83	999.22	8.86	95.37	2.34	25.19	104.03	1120
108,208,308,408,508,608,808,908,1008,1108,1308,1408, 1508,1608,1808,1908,2008,2108,2308, 2408,2508	2BHK-C	63.50	683.51	6.29	67.71	2.29	24.65	72.08	776

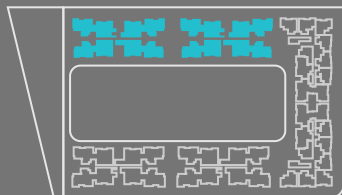


Tower E & F

Refuge 7th Floor



Tower E & F									
Unit No.	Type	Carpet Area		Balcony		Dry Balcony		Total Carpet Area	
		Sq.m	Sq.ft	Sq.m	Sq.ft	Sq.m	Sq.ft	Sq.m	Sq.ft
701	2BHK-C	63.50	683.51	6.29	67.71	2.29	24.65	72.08	776
702	3BHK-B	92.83	999.22	8.86	95.37	2.34	25.19	104.03	1120
703	3BHK-B	92.83	999.22	8.86	95.37	2.34	25.19	104.03	1120
Refuge Area (Co- Working Spaces)									
705	2BHK-C	63.50	683.51	6.29	67.71	2.29	24.65	72.08	776
706	3BHK-B	92.83	999.22	8.86	91.30	2.34	25.19	104.03	1120
707	3BHK-B	92.83	999.22	8.86	95.37	2.34	25.19	104.03	1120
708	2BHK-C	63.50	683.51	6.29	67.71	2.29	24.65	72.08	776

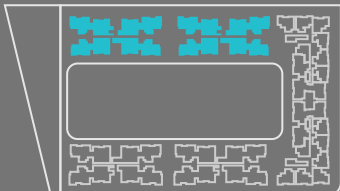


Tower E & F

Refuge 12th Floor



Tower E & F									
Unit No.	Type	Carpet Area		Balcony		Dry Balcony		Total Carpet Area	
		Sq.m	Sq.ft	Sq.m	Sq.ft	Sq.m	Sq.ft	Sq.m	Sq.ft
1201	2BHK-C	63.50	683.51	6.29	67.71	2.29	24.65	72.08	776
1202	3BHK-B	92.83	999.22	8.86	95.37	2.34	25.19	104.03	1120
1203	3BHK-B	92.83	999.22	8.86	95.37	2.34	25.19	104.03	1120
Refuge Area (Guest Room & SPA)									
1205	2BHK-C	63.50	683.51	6.29	67.71	2.29	24.65	72.08	776
1206	3BHK-B	92.83	999.22	8.86	91.30	2.34	25.19	104.03	1120
1207	3BHK-B	92.83	999.22	8.86	95.37	2.34	25.19	104.03	1120
1208	2BHK-C	63.50	683.51	6.29	67.71	2.29	24.65	72.08	776

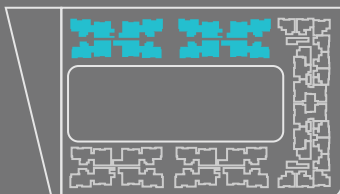


Tower E & F

Refuge 17th & 22th Floor



Tower E & F									
Unit No.	Type	Carpet Area		Balcony		Dry Balcony		Total Carpet Area	
		Sq.m	Sq.ft	Sq.m	Sq.ft	Sq.m	Sq.ft	Sq.m	Sq.ft
1701, 2201	2BHK-C	63.50	683.51	6.29	67.71	2.29	24.65	72.08	776
1702, 2202	3BHK-B	92.83	999.22	8.86	95.37	2.34	25.19	104.03	1120
1703, 2203	3BHK-B	92.83	999.22	8.86	95.37	2.34	25.19	104.03	1120
Refuge Area(Guest Room 1 & 2)									
1705, 2205	2BHK-C	63.50	683.51	6.29	67.71	2.29	24.65	72.08	776
1706, 2206	3BHK-B	92.83	999.22	8.86	91.30	2.34	25.19	104.03	1120
1707, 2207	3BHK-B	92.83	999.22	8.86	95.37	2.34	25.19	104.03	1120
1708, 2208	2BHK-C	63.50	683.51	6.29	67.71	2.29	24.65	72.08	776





Admiration. Accolades.

Appreciation.

Our entire team of domain experts is dedicated to bring in something that is way above the prevailing standards in the industry. The focus is always on supremacy and the unmatched construction practices. While ardently pursuing our goals, some prestigious recognitions and accolades come our way and admire our sincere efforts. They truly motivate us to raise the bar, accelerate the pace and to be at our best in whatever we do.



**ET Awards 2022
Most Innovative Project
in Pune**



**Times Realty Icons
Emerging Brand
of Pune**



**Times Real Estate
Icons Top Lifestyle Projects
ITrend Homes**



**Pune's
First Convertible
Homes**



**Pioneered the Concept
of Homes with
Zero Space Wastage**



**Pune's
First Home with
Bonus Spaces**



**Times Power Brands 2023
Best Future Ready Home
- Pune**

