

A Project by



CASA 10



A CASA lifestyle

NOW AT VAISHALI NAGAR, JAIPUR

RERA Website : www.rera.rajasthan.gov.in
RERA Regd. No RAJ/P/2023/2366

Bigger and better

CASA 10

VAISHALI NAGAR, JAIPUR

The Intro...



Following CASA-9's phenomenal success, we are pleased to announce the bigger and better CASA 10, a brand new project in a prominent location in Vaishali Nagar that offers you spaces that are designed and inspired by post-COVID-19 living.



Your new luxurious home comes with a dedicated space for you to indulge in your own activity, whether it's work or studying, without having any outside interruption. The villas are designed so that they require less maintenance and let you focus on your work. The compact villas are built to be easily manageable and are designed according to longitude and latitude for you to adjust to Rajasthan's weather.

The Mediterranean-style architecture that inspired the villas' design seeks to be sturdy, heat-resistant, and aesthetically pleasing.

CASA 10

VAISHALI NAGAR, JAIPUR



A WONDERFUL
LIFE AWAITS

CASA 10

VAISHALI NAGAR, JAIPUR



WELL-CONNECTED
AND CLASS APART

LIVING ROOM

The centre of the house is an airy living area where you and your family rejoice and create new memories. Casa 10 is created in earthy tones and warm shades that is in perfect harmony with modern lifestyle.



MASTER BED ROOM

The bedroom serves as a haven for restoration, rest, and escape. Since it is one of your private spaces, it needs to be quite cozy. Every element of your bedroom fits perfectly to reflect your personality and offer the ideal setting for relaxation.



KITCHEN

The kitchen has all of the conveniences, utensils, and facilities needed to create any meal for the entire family and friends. When you plan to host a party, it provides you with ample space for breakfast, lunch, and dinner.



WASHROOM

Our bathrooms should offer total comfort as well as a place to unwind and take in some peace and quiet. The bathroom was designed with your needs in mind while also harmonizing with the aesthetic of the bedroom.



SWIMMING POOL

Treat yourself to a brief dip in the pool, or simply read your favourite book there and enjoy the peace and quiet on your day off. While others travel long distances to feel rejuvenated, you already have.



GYMNASIUM

Give your mind and body a whole new makeover in the well-equipped gym. In today's hectic schedule, it is essential to look after your body and health, and thus the Casa 10 gymnasium is designed to keep you active, which influences all parts of your life.



LIVING FACILITIES

- Power Backup for Each Villa.
- Underground Cabling.
- Big Individual Parking.
- 22ft. high ceiling of Drawing Room.
- Separate Water Storage Tank with each villa.
- Garbage Collection Bins at various locations.
- Convenient High Street Shopping Complex.
- Elevation in G.R.C. (Glass Reinforced Concrete).
- Main Entrance Security phone app-based security.
- Approved by JDA and Loanable from leading Banks.
- Open Modular Kitchen with breakfast counters.
- Solid Waste Treatment (STP) Plant for environment-friendly living.
- Modern French Windows.
- On call Gardener, Plumber and Electrician.
- Jogging tracks for fitness freaks.
- Waiting Lounge.
- Gymnasium.
- Pool Table.
- Card Room.
- Carrom Board.
- Table Tennis.
- Library.
- Community Hall.
- Open Playground for kids.
- Buddha space for meditation.
- Jacuzzi Pool.
- Steam Bath / Sauna Bath.
- Separate swimming pools for adults and kids.



ROAD 9 MTR. WIDE

ROAD 9 MTR. WIDE

17 193.10 Sq.yd.	16 112.87 Sq.yd.	15 109.21 Sq.yd.	14 107.44 Sq.yd.	13 111.26 Sq.yd.	12 115.31 Sq.yd.	11 119.56 Sq.yd.	10 123.96 Sq.yd.	09 128.29 Sq.yd.	08 132.12 Sq.yd.	07 135.35 Sq.yd.	06 131.63 Sq.yd.	05 129.26 Sq.yd.	04 128.25 Sq.yd.	03 127.21 Sq.yd.	02 125.43 Sq.yd.	01 148.79 Sq.yd.
------------------------	------------------------	------------------------	------------------------	------------------------	------------------------	------------------------	------------------------	------------------------	------------------------	------------------------	------------------------	------------------------	------------------------	------------------------	------------------------	------------------------

ROAD 9 MTR. WIDE

18 143.99 Sq.yd.	19	20	21	22	23	24	25	26	27	28	29	30	31 188.57 Sq.yd.
25 ft. X 50 ft. = 138.88 Sq.yd.													
45 120.83 Sq.yd.	44	43	42	41	40	39	38	37	36	35	34	33	32 188.57 Sq.yd.
25 ft. X 50 ft. = 138.88 Sq.yd.													

ROAD 9 MTR. WIDE

46 110.79 Sq.yd.	47	48	49	50	51	52	53	54	55	56	57	58	59	60 164.25 Sq.yd.
25 ft. X 50 ft. = 138.88 Sq.yd.														

FUTURE EXT. CASA-11

ROAD 9 MTR. WIDE

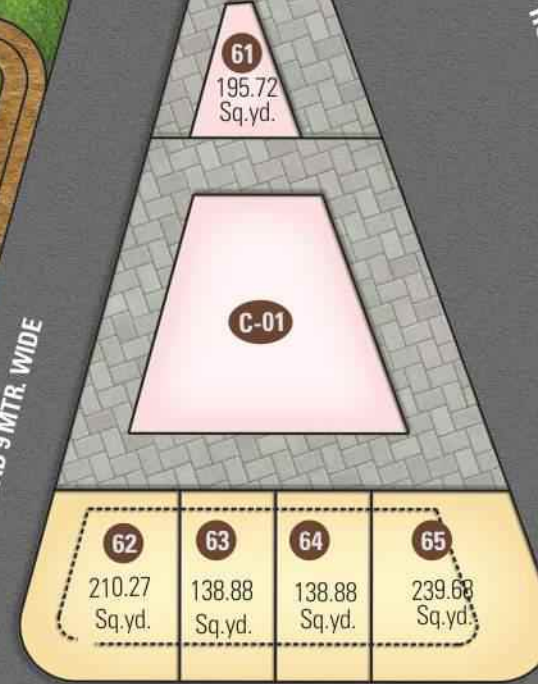
FUTURE EXT. CASA-11

CLUB HOUSE

ROAD 9 MTR. WIDE

ROAD 9 MTR. WIDE

ROAD 9 MTR. WIDE



ROAD 9 MTR. WIDE



FUTURE EXT. CASA-11

ZDP ROAD 30 MTR. WIDE

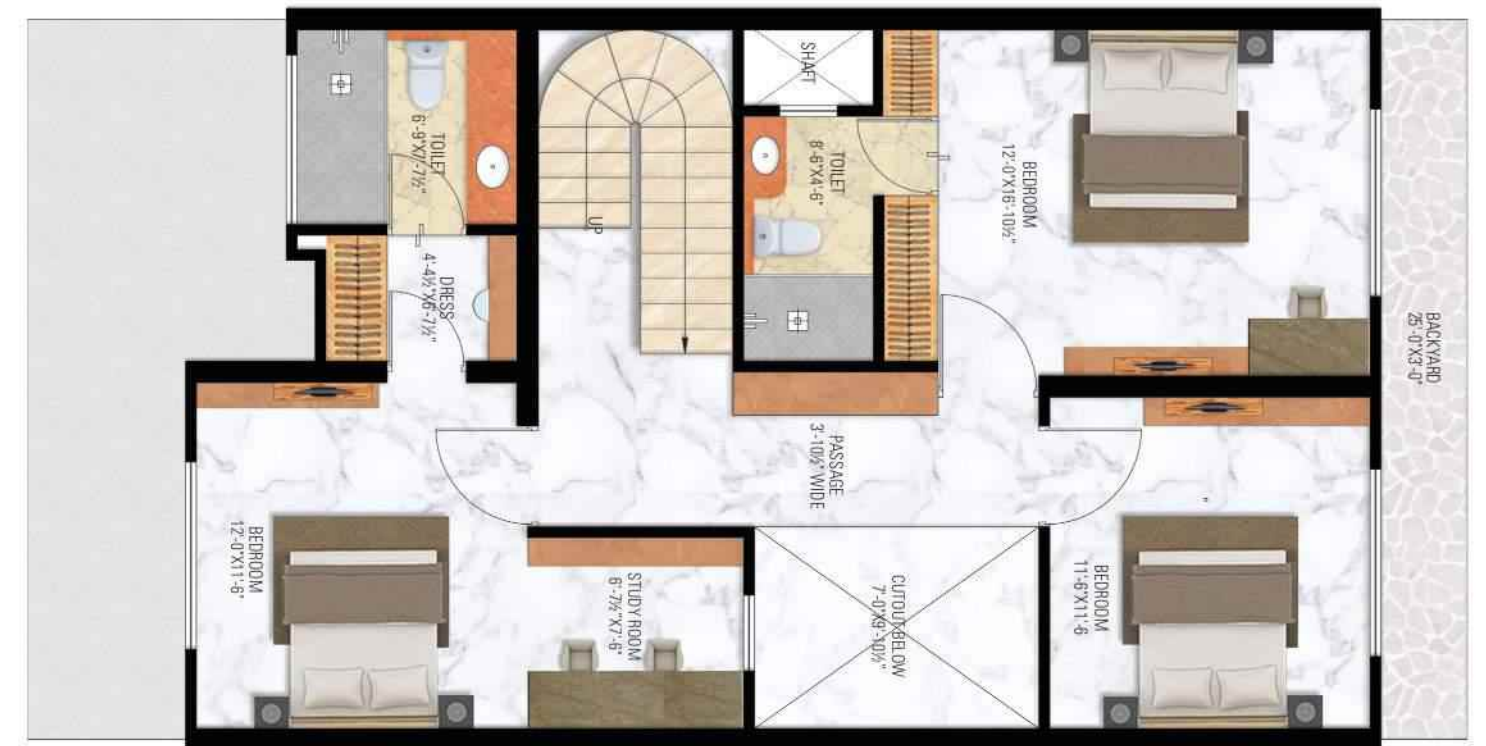


CASA-10

VAISHALI NAGAR, JAIPUR



FIRST FLOOR LAYOUT PLAN



FIRST FLOOR LAYOUT PLAN



GROUND FLOOR LAYOUT PLAN



GROUND FLOOR LAYOUT PLAN

GRC is a composite of Portland cement, fine aggregate, water, acrylic co-polymer, glass fiber reinforcement and additives. The glass fibers reinforce the concrete, much as steel reinforcing does in conventional concrete. The glass fiber reinforcement results in a product with much higher flexural and tensile strengths than normal concrete, allowing its use in thin-wall casting applications. GFRC is a lightweight, durable material that can be cast into nearly unlimited shapes, colors and textures.



The application process for Spray-up GFRC is very similar to shotcrete in that the fluid concrete mixture is sprayed into the forms.



Premix mixes into the fluid concrete mixture which is then sprayed.

D.G.U. glasses are dustproof and allow natural light to pass through, giving you the feeling of being on vacation in the comfort of your own home.

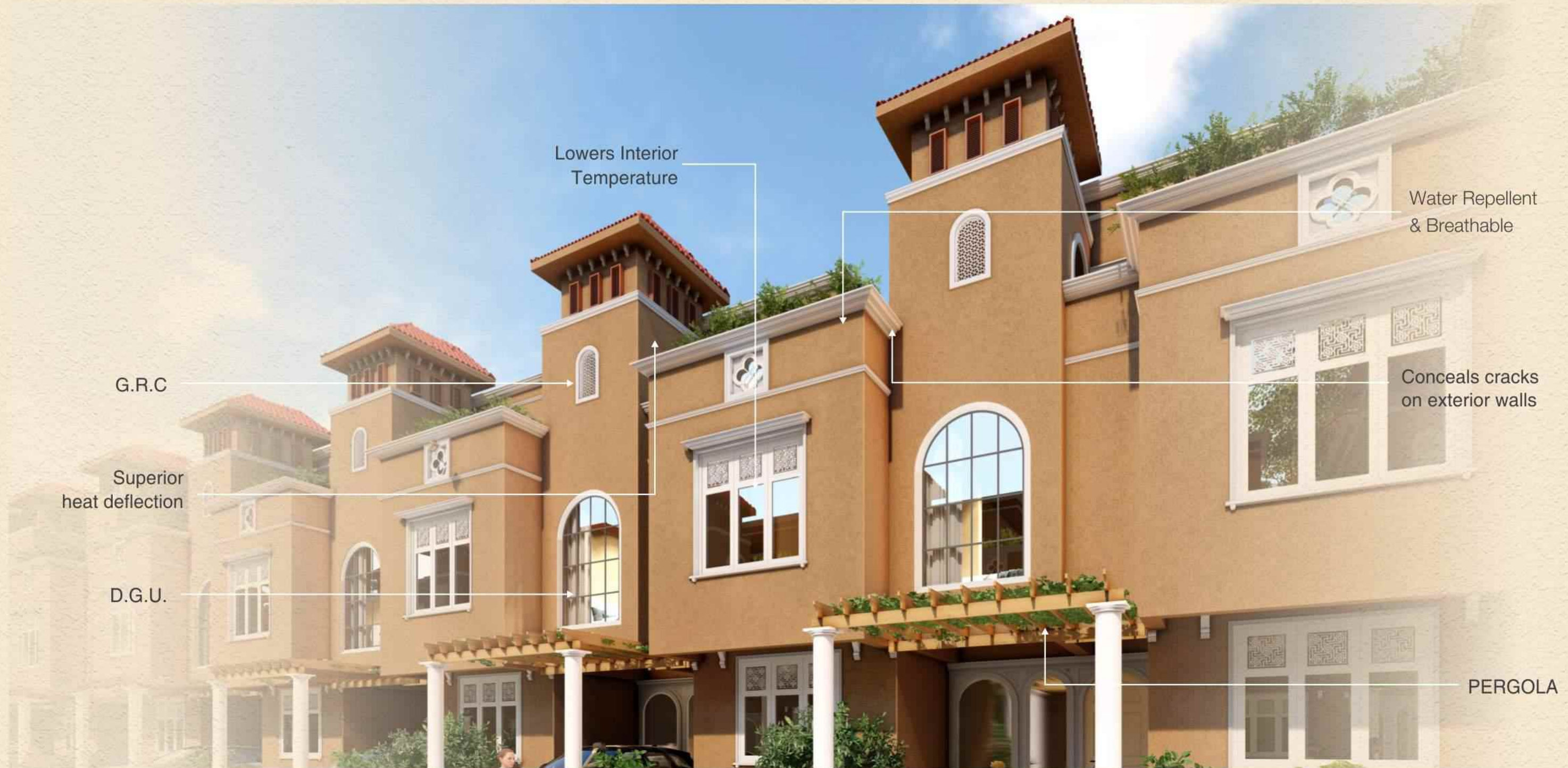


***D.G.U. (Double Glass Unit)**

- Double Glass Unit aluminum sliding windows with D.G.U. for:
- Sound reduction. Insulation.
- Water Resistant.
- Dust free living.
- Maintaining desired internal temperature.

Paint

- Plastic Emulsion providing the long lasting finish.
- Water proof paint for external walls with U.V. protection, Sun reflecting that also reduces temperature.



G.R.C

Superior heat deflection

D.G.U.

Lowers Interior Temperature

Water Repellent & Breathable

Conceals cracks on exterior walls

PERGOLA

STRUCTURE

- R.C.C. composite structure with fly ash brick masonry, cement and POP plastering ensures the finishing touch.

FLOORING

- Beautiful Vitrified Tiles for all the rooms.
- Ceramic Tiles for Toilets and Balcony.
- Strong interlocking concrete paver tiles for the driveway and porch.

DOORS & WINDOWS

- The contemporary D.G. Glass Shutter French windows in Drawing and Bedrooms*.
- Designer main door of pine wood filling with designer skin.
- Superior quality internal flush doors with finger joint solid wood frame.
- Constructed with sturdiness, provision for wooden wardrobe in Master bedroom with durability, exclusive designs and smooth finish.

ELECTRICAL

- Silent power generator backup for all villas.
- Electric Infrastructure (LT line) through underground cable ensures no wire mess.
- Modular Switches, Concealed conduits with ISI

brand Copper wires.

- Segregated power & lighting circuits ensuring safety of your family.
- Provision for A.C. in all bedrooms with sleeves in the walls for easy summers.

SECURITY

- One Entry & One Exit Gate for better monitoring.
- Fenced walls around the township preventing infiltration.
- 24 hours security at main entrance including the entire township via CCTV.
- A complete family security system is ensured by a centralized APP system facility at Security desk.

WATER CENTRALIZED

- A common overhead water tank is present in the township with each villa having access to it with their own respective tanks present.

SEWERAGE & WASTE DISPOSAL SYSTEM

- Garbage collection bins at various locations for a clean CASA 10.

