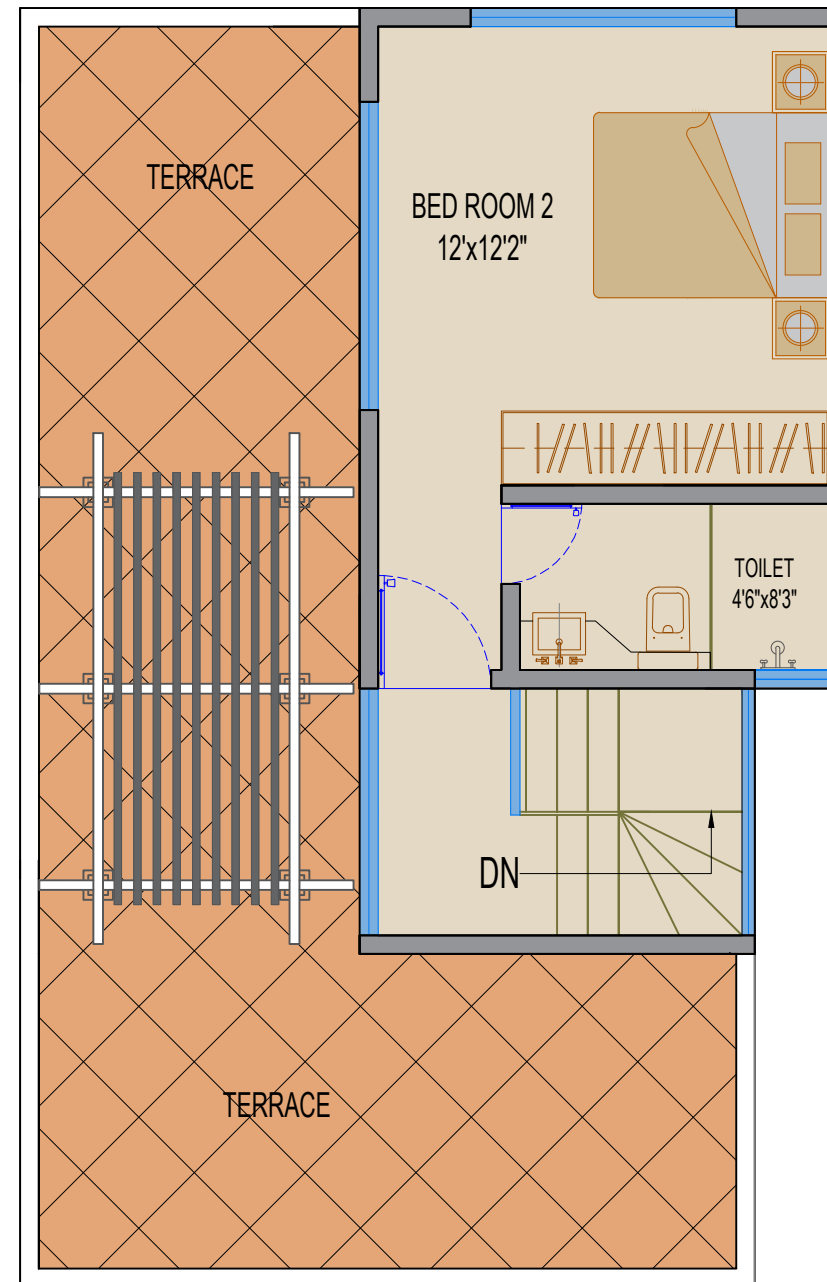


GROUND FLOOR PLAN



FIRST FLOOR PLAN

5 ELEMENTS RETREAT		
2 - BHK + TERRACE VILLA		
AREA BREAK UP		
PLOT AREA APPROX.	1615	Sq. Ft.
Ground Floor Built Up Area	708	Sq. Ft.
First Floor Built Up Area	508	Sq. Ft.
Entrance Poarch & Veranda	84	Sq. Ft.
PLUNGE POOL	60	Sq. Ft.
POOL DECK	0	Sq. Ft.
U.G.W.T./ O.H.W.T./ S.T.	156	Sq. Ft.
TOTAL CONSTRUCTION AREA	1516	Sq. Ft.
TERRACE GAZEBO & BAR/ BARBEQUE	628	Sq. Ft.
1 CAR PARKING	183	Sq. Ft.
LANDSCAPE GARDEN	590	Sq. Ft.
TOTAL USABLE AREA	2917	Sq. Ft.
BASIC COST		
DEVELOPMENT CHARGES		
STANDARD CLUB MEMBERSHIP	₹	-
BASIC TOTAL	₹	-

2 - BHK + TERRACE

**PROPOSED VILLA- N.A.
LAYOUT AT KHALAPUR**



CLIENT:
M/s. PAPRIWAL & SON'S

Area: APPROX 2917 sq.ft

TYPE: RESIDENTIAL VILLLA WITH POOL

SHEET : GROUND + 1st FLOOR PLAN

DATE: 25-03-2023

Revisions

North



**A
P
A**

ANKUSH PAPRIWAL ARCHITECTS

9987325522 | 9987225522

Sheet No.

3