

C O D E N A M E  
ELEVATE

RIGHT NEXT TO PHOENIX MARKETCITY

# Unbelievably Elevated Experiences

Elite 2 & 3 Bed Residences  
**Right next to Phoenix Marketcity, Wakad**





Image for representation purpose only

# Take your life to the next level, literally

---

Enhanced, Enchanting, Envious, Enigmatic... these are just some words that would define your lifestyle at Codename Elevate. A life filled with refined experiences, that is a perfect amalgamation of comfort & luxury, beyond imagination - yes you can lead this life in the most coveted neighborhood of Wakad.



Image for representation purpose only

# Highlights

---

Discover an elevated experience where you bask in indulgences curated according to your style. From space to specifications, every little detail is handcrafted with affection and warmth to give you an experience like never before!

Witness the beauty of surreal cityscapes and an elite lifestyle in one of the tallest residential towers in the vicinity.

- Tech-savvy homes with home automation
- One of the tallest towers in the vicinity
- 30+ lifestyle amenities
- Next to Phoenix Marketcity
- Ample Light & Ventilation
- Serene views of the cityscape



Image for representation purpose only

# Amenities

---

## Unusual Indulgences for an Unhindered Lifestyle

Codename Elevate brings you a haven with aesthetic, magnificent, and state-of-the-art amenities designed exclusively for every age group. Be it fitness or fun, rejuvenation or refreshment, indoor or outdoor, we have it all ready for you!

Dwell in the world of uncommon recreational activities for a happening & aesthetic experience spread across 3 levels. We present you with 30+ life-enhancing amenities that will elevate your life.

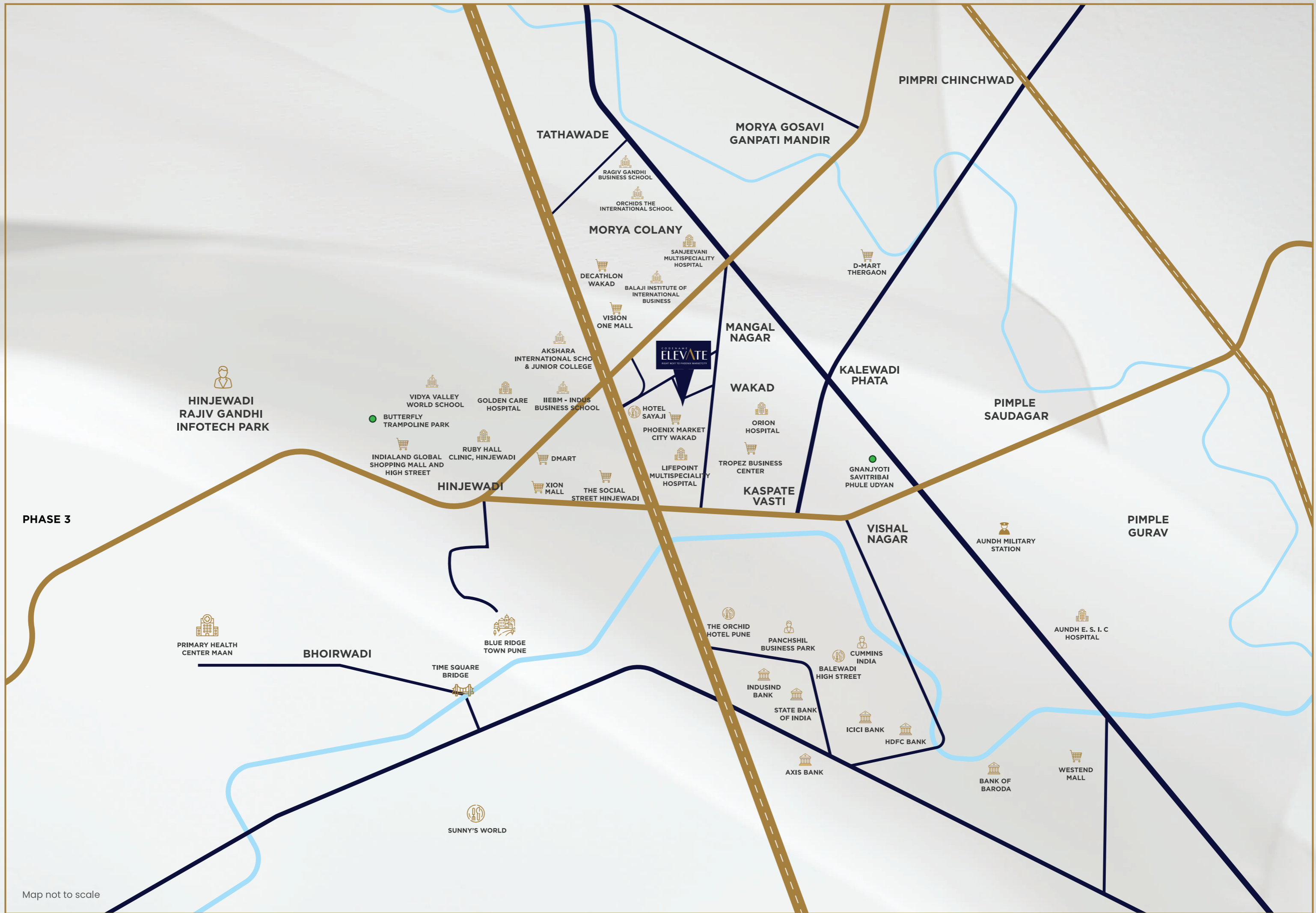
- Swimming Pool
- Poolside Lounge
- Kids Pool
- Modern Gymnasium
- Feature Wall
- Multipurpose Hall
- Party lawn
- Art Room
- Music room
- Reading Room
- Dance/Yoga Room
- Temple Court
- Children's Play area
- Trellis covered court
- Co-working space
- Indoor Games & much more





Image for representation purpose only





HINJEWADI  
 RAJIV GANDHI  
 INFOTECH PARK

PRIMARY HEALTH  
 CENTER MAAN

BHOIRWADI

SUNNY'S WORLD

VIDYA VALLEY  
 WORLD SCHOOL  
 BUTTERFLY  
 TRAMPOLINE PARK

INDIALAND GLOBAL  
 SHOPPING MALL AND  
 HIGH STREET

HINJEWADI

BLUE RIDGE  
 TOWN PUNE

TIME SQUARE  
 BRIDGE

TATHAWADE

MORYA COLONY

RAGIV GANDHI  
 BUSINESS SCHOOL  
 ORCHIDS THE  
 INTERNATIONAL SCHOOL

DECATHLON  
 WAKAD

BALAJI INSTITUTE OF  
 INTERNATIONAL  
 BUSINESS

VISION  
 ONE MALL

AKSHARA  
 INTERNATIONAL SCHO  
 & JUNIOR COLLEGE

GOLDEN CARE  
 HOSPITAL  
 IIEBM - INDUS  
 BUSINESS SCHOOL

RUBY HALL  
 CLINIC, HINJEWADI

DMART

XION MALL

THE SOCIAL  
 STREET HINJEWADI

MORYA GOSAVI  
 GANPATI MANDIR

MANGAL  
 NAGAR

WAKAD

ORION  
 HOSPITAL

TROPEZ BUSINESS  
 CENTER

KASPATE  
 VASTI

HOTEL  
 SAYAJI

PHOENIX MARKET  
 CITY WAKAD

LIFEPOINT  
 MULTISPECIALITY  
 HOSPITAL

PIMPRI CHINCHWAD

KALEWADI  
 PHATA

GNANJYOTI  
 SAVITRIBAI  
 PHULE UDYAN

PIMPLE  
 SAUDAGAR

VISHAL  
 NAGAR

AUNDH MILITARY  
 STATION

PIMPLE  
 GURAV

AUNDH E. S. I. C  
 HOSPITAL

THE ORCHID  
 HOTEL PUNE

PANCHSHIL  
 BUSINESS PARK

INDUSIND  
 BANK

STATE BANK  
 OF INDIA

AXIS BANK

CUMMINS  
 INDIA

BALEWADI  
 HIGH STREET

ICICI BANK

HDFC BANK

BANK OF  
 BARODA

WESTEND  
 MALL

# Location

---

## Unparalleled Conveniences in an Upbeat Locale

Located right next to Phoenix Marketcity in prime Wakad, Codename Elevate opens you up to a convenient lifestyle. No more tiring traffic hours, no more hassle, and no more running late to school or the office! Stay in the nerve center of Pune with top-notch hot spots just minutes away.



## Connectivity

- Mumbai - Bangalore Highway - 2 Min
- Upcoming Metro Station - 5 min
- Bhumkar Chowk - 5 min
- Hinjewadi - 10 min
- Balewadi Highstreet - 10 min
- Akurdi railway station - 15 Min

Image for representation purpose only

## IT Hub

- Tropez Business Center - 4 Min
- Panchshil Business Park - 10 Min
- Cummins India - 10 Min
- Rajiv Gandhi Infotech Park - 12 Min



## Education

- Institute Of Science Poona's College Of Computer Sciences - 2min
- IIEBM-Indus Business School - 4 Min
- Rajiv Gandhi Business School - 5 Min
- Balaji Institute of International Business - 6 Min
- Akshara International School & Junior College - 7 Min
- Orchids The International School - 8 Min
- Educon Internationa school - 8 min
- Vidya Valley World School - 10 Min
- Indira School of Career Studies - 12 Min

## Banks

- Axis Bank – 0 Min
- State Bank of India – 2 Min
- IndusInd Bank – 2 Min
- HDFC Bank – 3 Min
- ICICI Bank – 3 Min
- Bank of Baroda – 3 Min



## Restaurants & shopping malls

- Phoenix Market City – 0 Min
- Vision One Mall – 2 Min
- Decathlon – 2 Min
- Sayaji Hotel – 2 Min
- White Square Mall – 5 Min
- The social street Hinjewadi – 5 Min
- Hotel Tip Top International – 5 Min
- DMART – 7 Min
- Xion Mall – 7 Min
- Balewadi High Street – 10 Min
- Spot 18 Mall – 10min
- Indialand Global Shopping mall and High Street – 10 Min

## Hospitals

- Orion Hospital – 2 Min
- Lifepoint Multispecialty Hospital – 3 Min
- Golden Care Hospital – 5 Min
- Phoenix Hospital – 7 Min
- Aditya Birla Memorial Hospital – 7 Min
- Sanjeevani Multispecialty Hospital – 10 Min
- Ruby Hall Clinic, Hinjewadi – 15 Min





Image for representation purpose only

# Residences

---

## Uncompromised Space for an Unblemished lifestyle

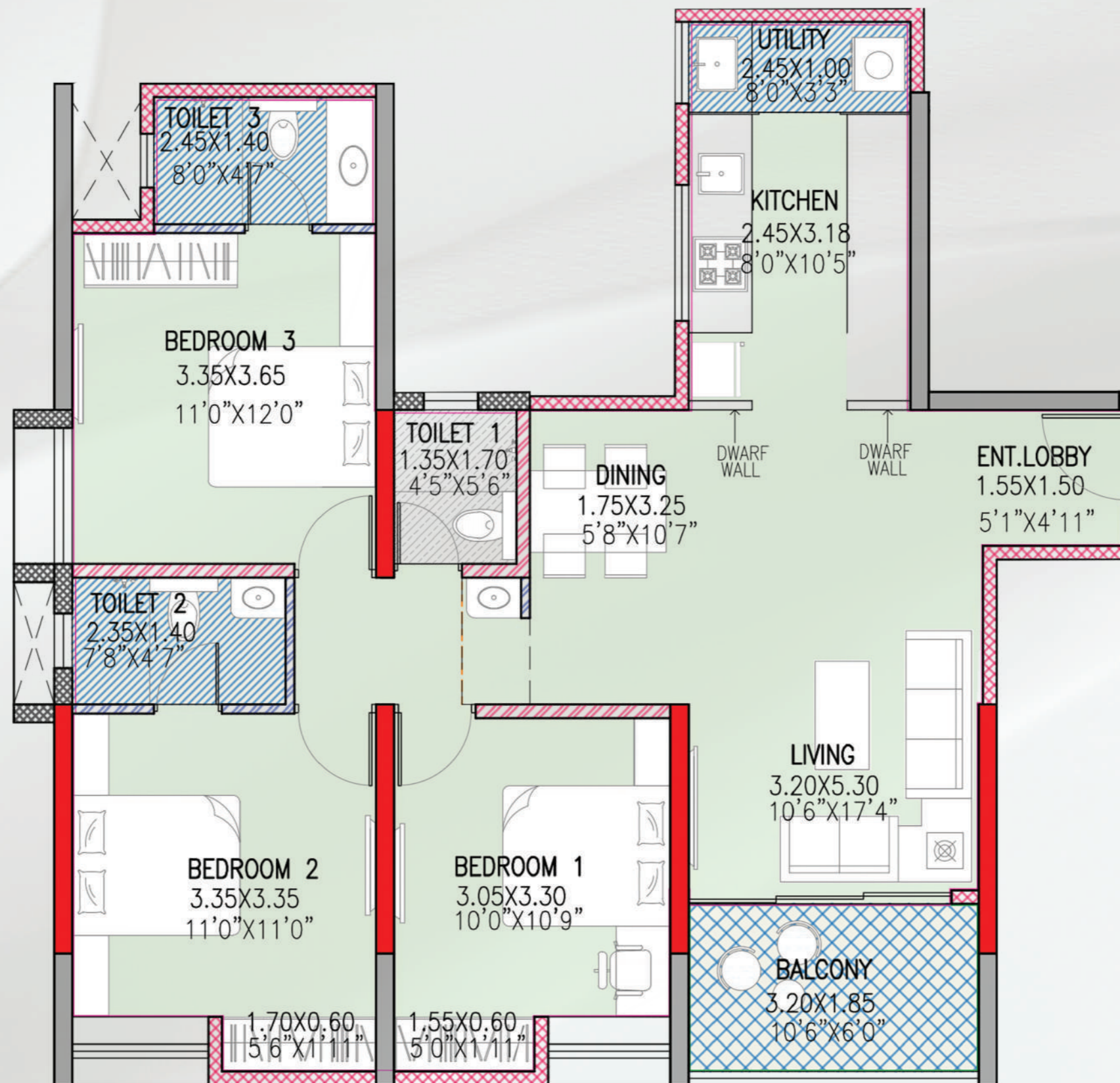
Residences at Codename Elevate are carefully designed and thoughtfully planned. Residences are buffed with glorifying charisma and chic architecture. Here, every brick is placed keeping your comfort in mind!

- High-rise lifestyle in the heart of Prime Wakad
- One of the tallest towers in the vicinity
- Spacious layouts with zero wastage
- Smart home automation
- Premium design & specifications
- Ample light & ventilation

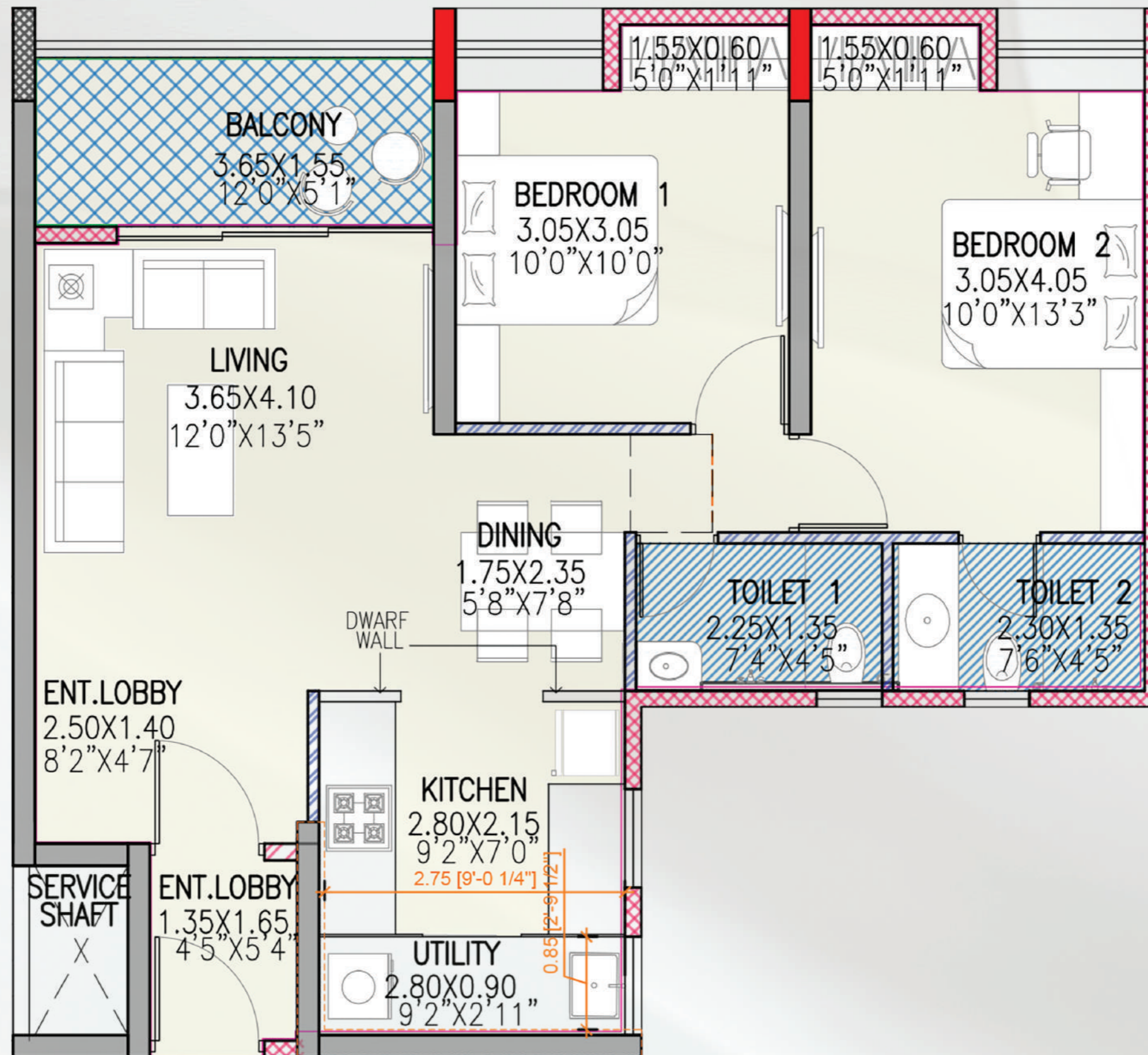




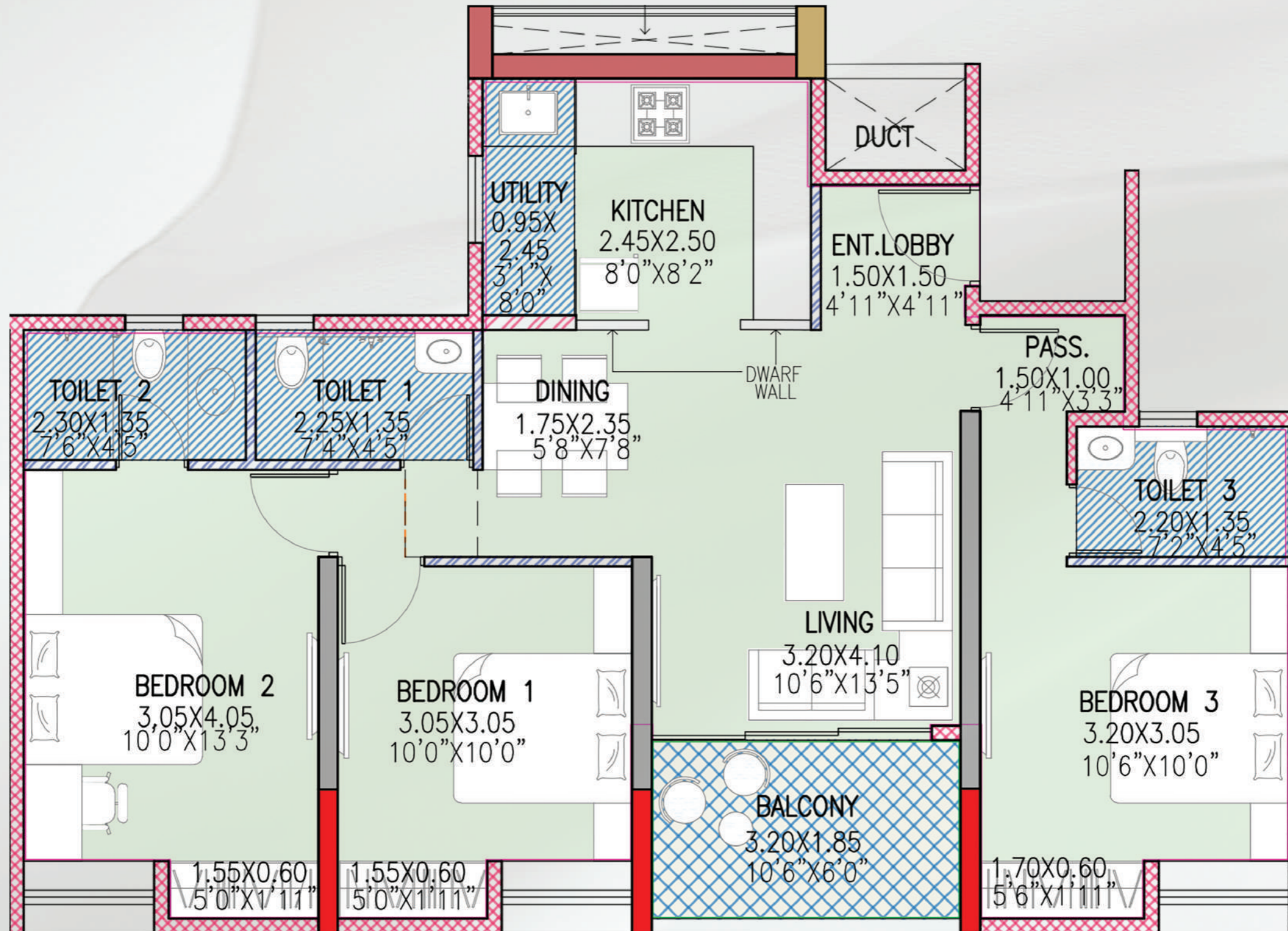
Image for representation purpose only



3 BHK-998.58 Sq.ft



2 BHK-785.88 Sq.ft



# About Developer

## A Unique Legacy

We're committed to creating living spaces that redefine comfort and offer unmatched happiness. Every creation starts with careful planning to maximize the homebuyer's living experience.

5+  
Prominent Awards

6+  
Completed Projects

6+  
Projects in progress

C O D E N A M E  
**ELEVATE**  
RIGHT NEXT TO PHOENIX MARKETCITY

Contact : 020 7196 7076 | [www.codenameelevate.com](http://www.codenameelevate.com) | [sales@codenameelevate.com](mailto:sales@codenameelevate.com)

---

S. No.175/3 (Part), Off Datta Mandir Road, Near Phoenix Marketcity, Wakad, Pune - 411057