

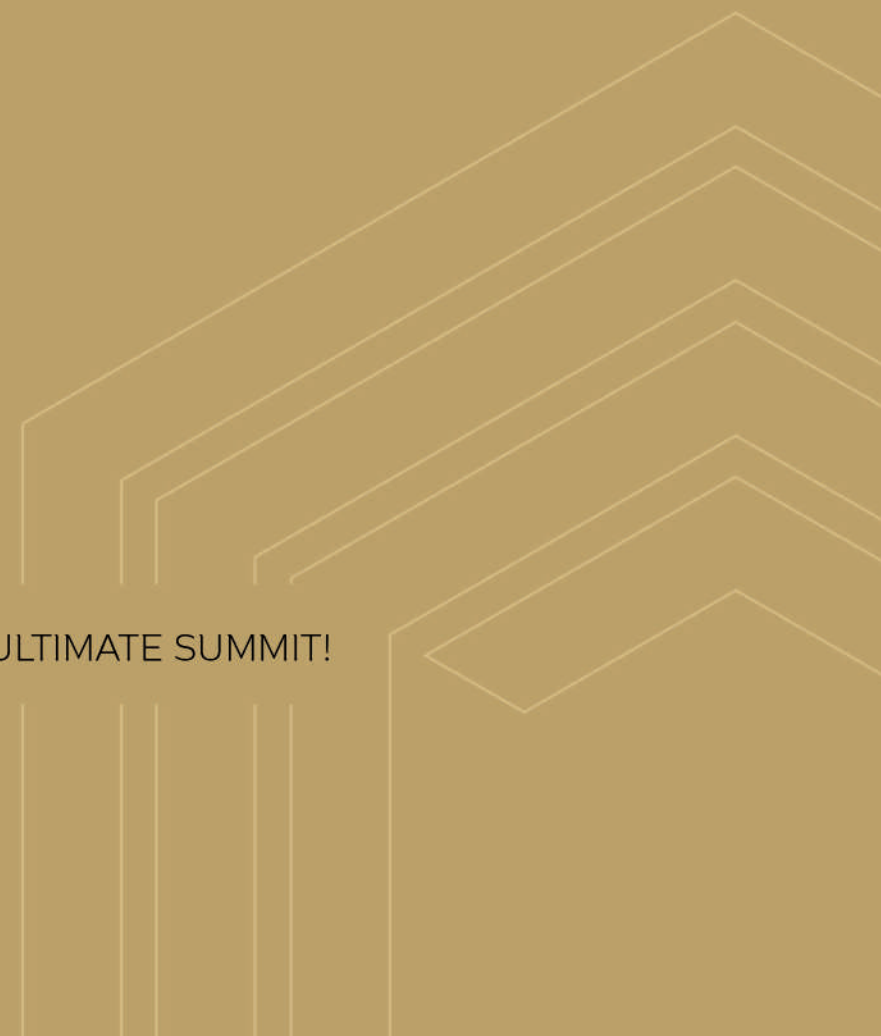


**PARTH UTOPIA**

PROJECT BY



WHERE THE FINE LIFE REACHES ITS ULTIMATE SUMMIT!





## ABOUT US

Mr. Mahendra J. Yeole is a renowned developer in Pune. He carries 31 years of experience in real estate development and he has constructed approximately 20,00,000 sq.ft. area in Pune City. M/s. Parth Developers was established by him 24 years ago in the year 1996.

In this changing world and fast life, M/s. Parth Developers has the vision to design and rebuild customers' dreams in the form of the projects. In this company we maintains high standards in quality construction, timely delivery and customer satisfaction.

M/s. Parth Developers is an organization headed by highly motivated team, who have profound experience and sharp business acumen. The company is a perfect blend of Experience and youth has set out ambitious growth plans by launching lifestyle projects. CLIENT SATISFACTION is the nucleus of our organization.

## ONGOING PROJECTS

Parth Mercantile



S.no 132/1, Besides Parth Jainam Housing Society, Sus Pune.

Parth Enclave (E & F)



S. No. 20/1 A, Karvenagar, Pune.

Parth's Shri Sai Lata



Chembur-Mumbai.

Parth's Bhagat Heritage



Sector No. 36, Kamothe, Navi Mumbai.

Srushti, G wing (JV Project)



S. No. 82, Kothrud, Pune.

Amar Serenity (JV Project)



S. No. 138/5, Plot No. 2, Pashan, Pune.



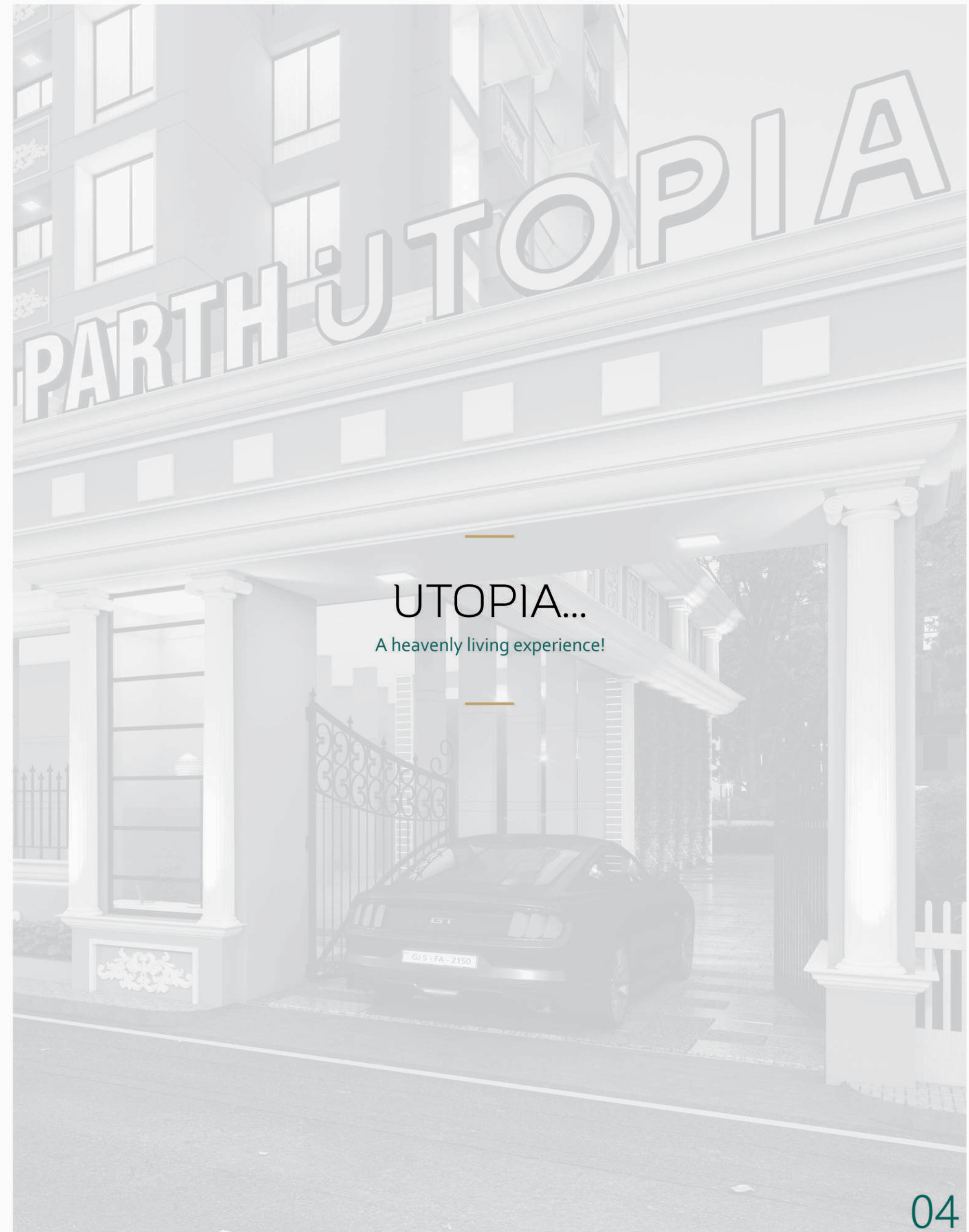
## PARTH UTOPIA

### ABOUT THE PROJECT

Welcome to a wonderful lifestyle, sprinkled with splendid amenities to ensure you live a life of comfort, class and care-free euphoria amidst the verdant shades of nature.

Parth Builders – an eponymous name for reliability once again brings to you homes as beautiful as their legacy. If the facade reminisces the opulent Roman Architecture, exuberant landscaping and aesthetic planning put you on the threshold of an enchanted living experience.

Discover a way of living laid out on the serene stretch of land, scattered with plush greens and panoramic views all around. A well-crafted lifestyle where a fusion of luxury and lush, convenience and class and vastness and vibrancy create an equilibrium for exemplary living.



UPCOMING  
PROJECTS

2&3  
BHK

PASHAN

S.no. 138/5 Plot no 4,  
Taluka Haveli, Dist Pune

1-2&3  
BHK

MAAN

S.No. 35/1/A (part)35/2/A,  
35/2/B Taluka Mulshi Dist Pune

1&2  
BHK

KAMOTHE

Plot no 40, sector 19,  
Panvel Navi Mumbai

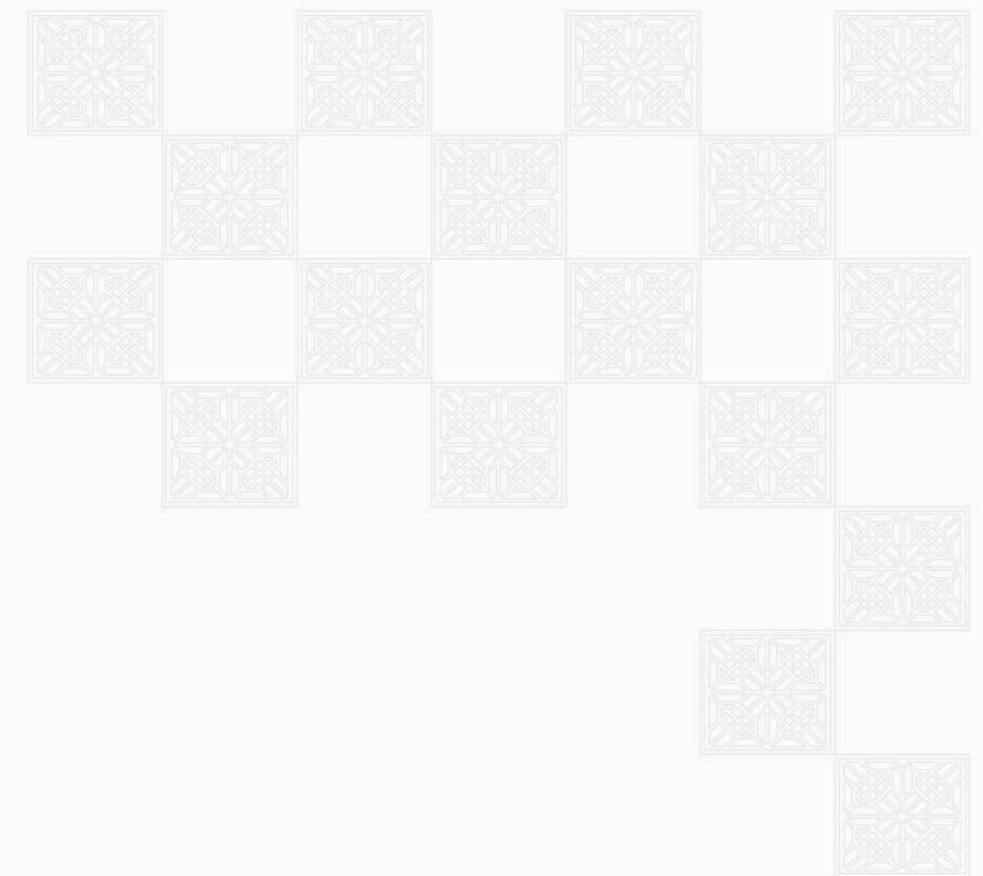
Avail pre launch offers. Contact +91 91300 13293

A HOME  
FOR EVERYONE

My retreat within the city



THE FINE NUANCES  
OF SPLENDOUR



**PARTH UTOPIA**  
1 & 2 bhk

MAKE A  
GRAND ENTRY

# PARTH UTOPIA



SERENITY AND STYLE ON THE STRATUM OF GREEN



# GROUND FLOOR PLAN

11 M W I D E R O A D



DRIVE WAY

6.00 MT WIDE RAMP UP

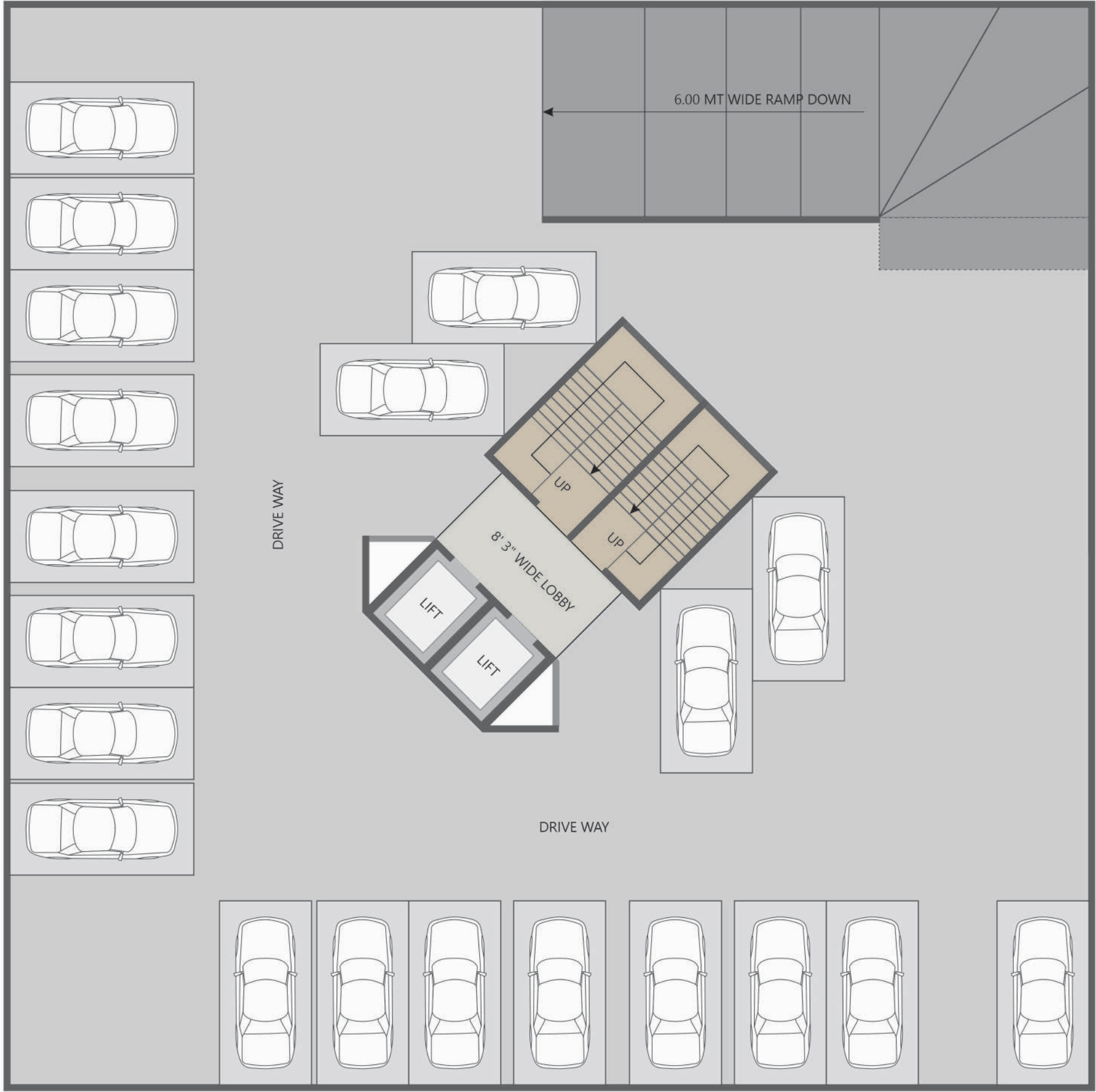
DRIVE WAY

ENTRANCE FOYER

DRIVE WAY

9.00 M WIDE ROAD

# FIRST FLOOR PLAN

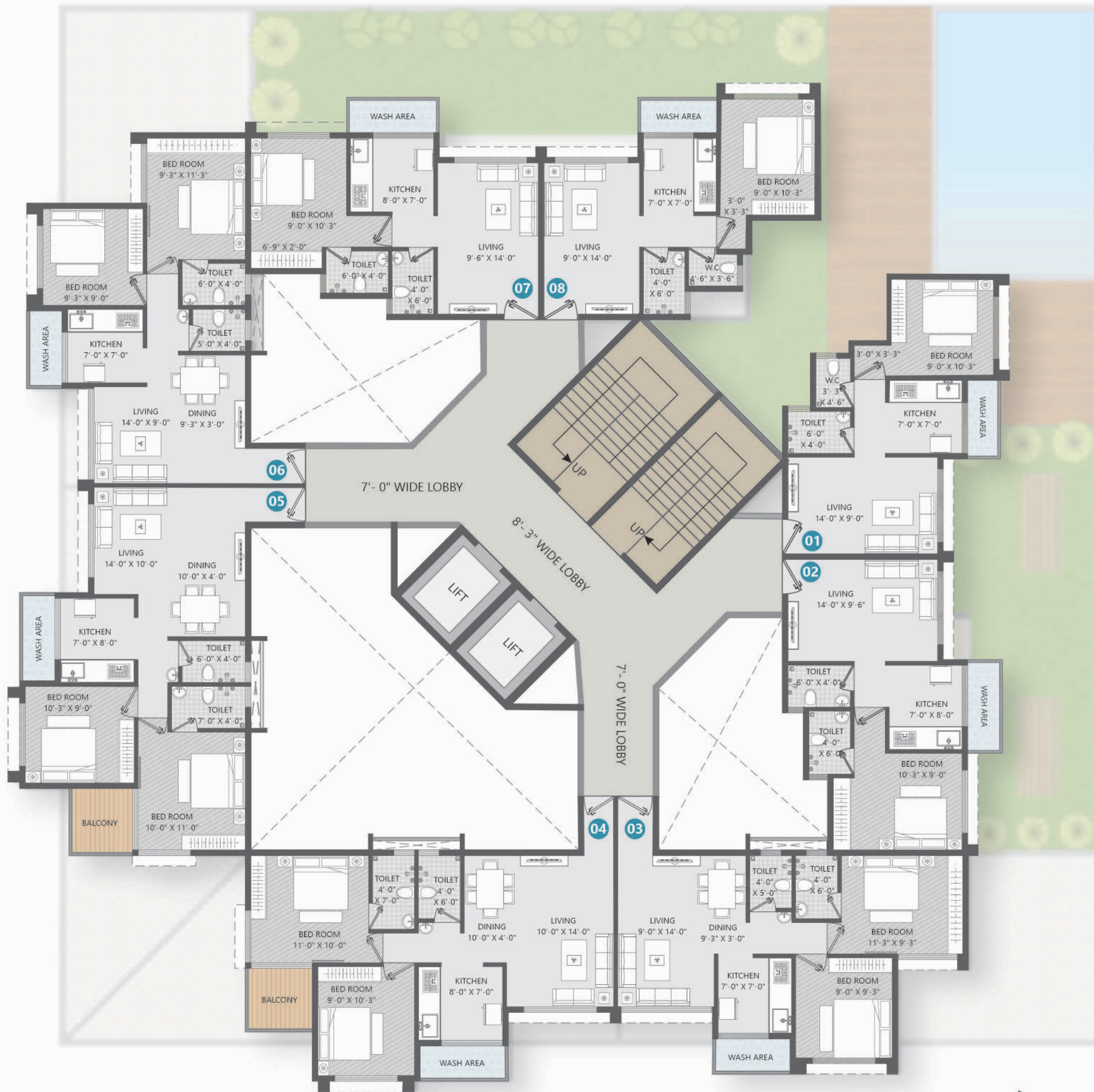


# SECOND FLOOR PLAN





TYPICAL FLOOR PLAN  
(3<sup>rd</sup> to 16<sup>th</sup> floor plan)



TYPICAL FLOOR PLAN  
(8<sup>th</sup>, 11<sup>th</sup> & 14<sup>th</sup> floor plan)



1 BHK SECTION VIEW



2 BHK SECTION VIEW





# PARTH UTOPIA

1 & 2 bhk

The mark of magnificence, the symbol of signature living, the epitome of exquisiteness... Everything is now your proud address.



## ENSURING FUN FOR EVERYONE UNDER THE SUN

From the sprawling gym to a safe and spread-out playing area for kids, Parth Utopia is a home where your loved ones will find their version of calmness and happiness.



KIDS POOL



SITTING  
AREA



KIDS PLAY  
AREA



INDOOR  
GAMES



LANDSCAPED  
GARDEN



GYMNASIUM



GYM ON 2<sup>nd</sup> FLOOR

A PLUNGE INTO  
PRISTINE LIVING



SWIMMING POOL ON 2<sup>nd</sup> FLOOR



FOYER ON GROUND FLOOR

## SPECIFICATIONS

### FLOORING :

- 2" x 2" Vitrified Flooring in all Rooms.

### KITCHEN :

- Granite Kitchen Platform.
- Stainless steel Sink.
- Full Tiles above Platform.

### ELECTRICAL FITTINGS :

- Concealed fire resistant high quality copper wiring.
- Light Points as per Architect Drawing.
- TV point in living room and master bedroom.
- Ac points in master bedroom.
- Provision for exhaust fan in bathroom and Kitchen.
- Intercom connectivity.
- CCTV camera.

### BATHROOM :

- Anti – Skid Tiles in Flooring.
- Jaguar or Other Equivalent Fittings.
- Jaguar or Other Equivalent Sanitary Wares.
- Concealed Plumbing.

### DOORS AND WINDOWS :

- Decorative Main Door with Hardware fitting.
- Anodized Aluminum Sliding Windows with Mosquito Net.
- Marble Window Frame.

### PAINT :

- External Acrylic Paint.
- Internal Plastic Paint.

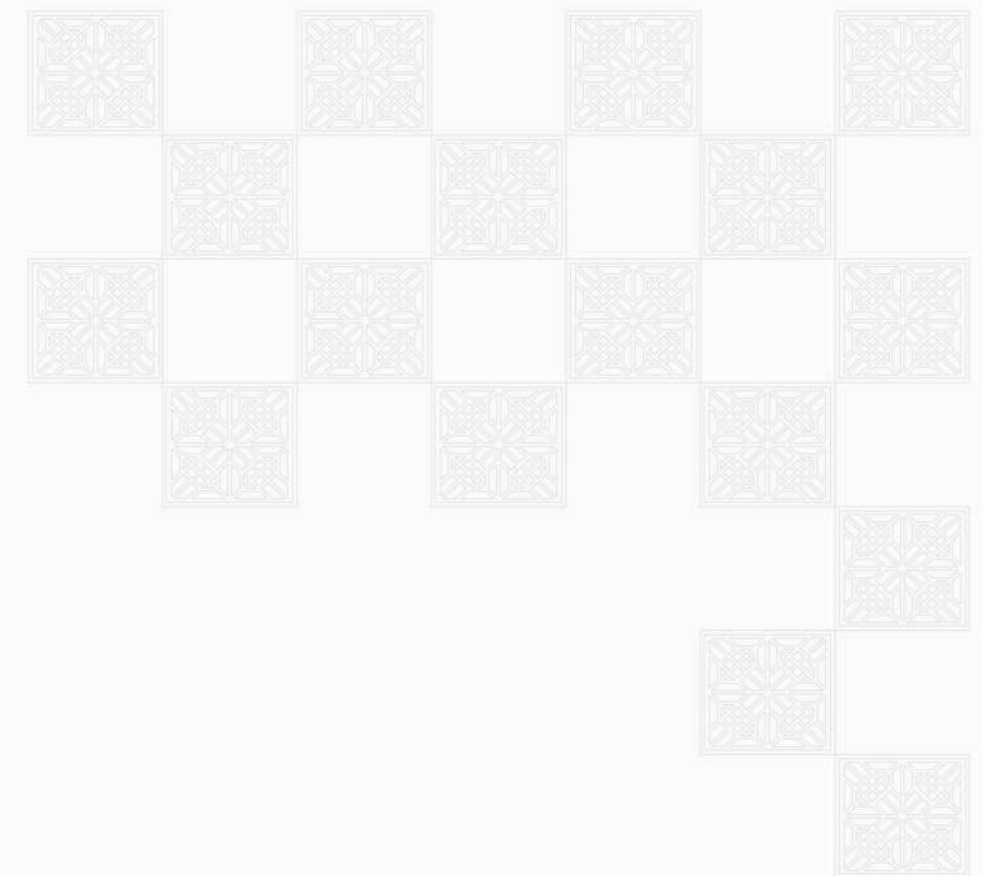


INDOOR GAMES ON 2<sup>nd</sup> FLOOR



PARKING ON GROUND FLOOR

Welcome to Parth Utopia and be a part of one of the most opulent, classy and iconic living experiences in Panvel. Be where, there is class, comfort and supreme quality of living.



**PARTH UTOPIA**  
1 & 2 bhk



# PARTH UTOPIA

1 & 2 bhk



## EASY CONNECTIVITY TO 1 K.M.

- Balaji International School
- D-mart / Shopping Mall
- Upcoming Metro Station (Phase 2)
- Bus Depot
- CIDCO Play Ground
- Hospitals
- Bank



FOR INQUIRY : 8976746704 / 8976746712

SITE ADDRESS : Plot No. 73/74/75, Sector No. 17, Roadpali, Kalamboli, Panvel, Navi Mumbai, Maharashtra - 410218.

HEAD OFFICE ADDRESS : 1196/B, Shrishti Chambers, 1st Floor, Office No.2, Ghole Road, Near Tukaram Paduka Chowk, Pune-411005

MAHA RERA NO. P 52000029982

MEMBER OF



<b>ARCHITECT :</b> Destination Architecture & Interior Designs	<b>STRUCTURE ENG. :</b> Adharshila Consultants	<b>LEGAL ADVISOR :</b> M/s. Himanshu Bheda & Associates	<b>3D &amp; BROCHURE BY :</b> FX DESIGN www.fxdesign.in
---	---	--	---

Legal Note :- The plans specifications, amenities, number of flats and units, number of floors, areas and photographs in the brochure are only indicative and subject to change without any prior notice. The rights of certain changes are reserved by the developers.