

Home of hues



SAROVA
The ExperienCity

Welcome to Sarova,

a world where home
is truly redefined.

Where every experience is
bright and adds colour to life.

From the expanse to the tiny corners,
each tells a different story.

Each delivers an unexpected experience,
which transports you to
a world you only imagined.

Life here is a spectacle,
which makes living here remarkable.

It's time to look forward
to a new experience every day.

It's time to live like you've always wanted.

Welcome to



SAROVA
The ExperienCity



AN UNENDING EXPANSE OF

colourful experiences

Sarova is not just home, it's your Experience City. The 55-acre project is poised to become one of Mumbai City's largest integrated townships and the most ambitious venture of SD Corporation. A melting pot of a vibrant lifestyle, the core focus of Sarova is to celebrate living and to build an integrated space driven by its community. Interspersed with landscaped greens and open spaces, expertly curated residential, retail and entertainment experiences are brought together in one framework to deliver a spectacular life.



This is only an illustration. The layout will not be developed as per this illustration. The contents of this illustration shall not be relied upon while making any decisions relating to the real estate project.

CLOSE TO HOME.

Closer to heart

A home is complete only when it's buzzing with life, inside-out. That's why, happiness finds you at every corner at Sarova.





AIRPORT

15 KM



METRO
STATION

2 MIN



WESTERN EXPRESS
HIGHWAY

2 MIN



RENOWED
SCHOOLS

5 MIN



SANJAY GANDHI
NATIONAL PARK

10 MIN

 SAROVA
The ExperienCity



● Metro Station

*Distances are approximate



BANKS
2 MIN



MALLS
10 MIN



RESTAURANTS
2 MIN



HOSPITALS
10 MIN



THEATRE
5 MIN



EVERYTHING YOU IMAGINED,

*whatever you could want,
and more*



**High Street
Living**



Food Street



School



Retail Street



Residential



Central Park



**Events and
Activities Zone**

THE WARMTH OF
SIENNAA
at Sarova

INVITES YOU

Welcome to a whole new feeling.
An experience that no other home can deliver. Presenting, Siennaa, a part of the North Phase at Sarova. Spread over 3.71 acres with 9 luxurious residential buildings, a state-of-the-art clubhouse that has space for unique amenities, and much more! Welcome home.



Artist's impression



- Spread across 3.71 acres
- 8 premium towers ranging from 17-21 residential floors
- 1 luxury tower with 54 residential floors
- Grand drop-off
- Double-height entrance lobby
- Ultra-modern tower design inspired by urban lifestyle



- 1.2 acres of green space
- Designer landscaping
- Stunning views of Sanjay Gandhi National Park from select residences



- Convenience retail plaza on the ground level



Actual Image of the Show Apartment

Internal Specifications



SECURITY

- 24-hour CCTV monitoring
- Video door phone for every apartment
- Intercom for every apartment



COMMON AREAS

- Double-height air-conditioned entrance lobby with imported marble flooring
- Elevators by OTIS or JOHNSON or an equivalent brand



IN-APARTMENT

- Premium engineered wooden flooring in master bedroom of 2 & 3 BHKs and vitrified flooring in the bedroom of 1BHKs
- Premium vitrified flooring in living & dining room and kitchen
- Premium ceramic and anti-skid flooring in bathrooms, balcony and dry areas
- Premium sanitary and CP fittings by Kohler/ESSO or equivalent brand
- Premium electrical fittings by Anchor/Panasonic/Roma or equivalent brand
- Provision for air-conditioning, geyser, water-purifier and exhaust fans

SIENNAA AMENITIES

- Amphitheatre
- Board-indoor games
- Walking/Jogging track
- Mini-Theatre
- Children's play area
- Acupressure therapy walk
- Yoga/meditation garden
- Senior citizen's corner

SIENNAA AT SAROVA - SITE LAYOUT

Indoor Amenities

- 1 Gym
- 2 Table tennis room
- 3 Lounge
- 4 Business center
- 5 Pool table

Outdoor Amenities

- 1 Swimming pool
- 2 Multi-purpose court
- 3 Barbeque area
- 4 Skating pit

Typology

- 1 BHK
- 2 BHK Premium
- 2 BHK Luxury
- 3 BHK



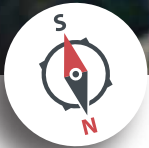
Sanjay Gandhi
National Park



WESTERN EXPRESS HIGHWAY



SAROVA
The ExperienCity

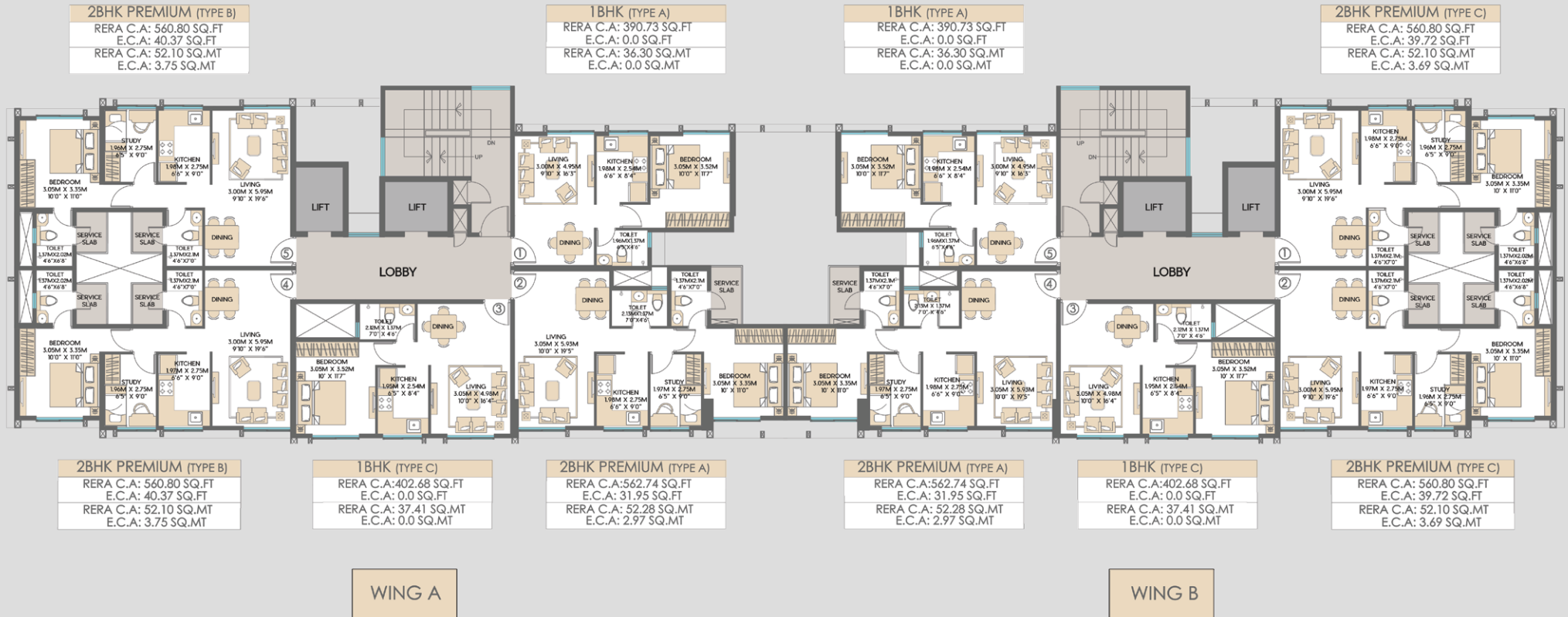


Launching
SIENNAA
at Sarova



Typical Floor Plans

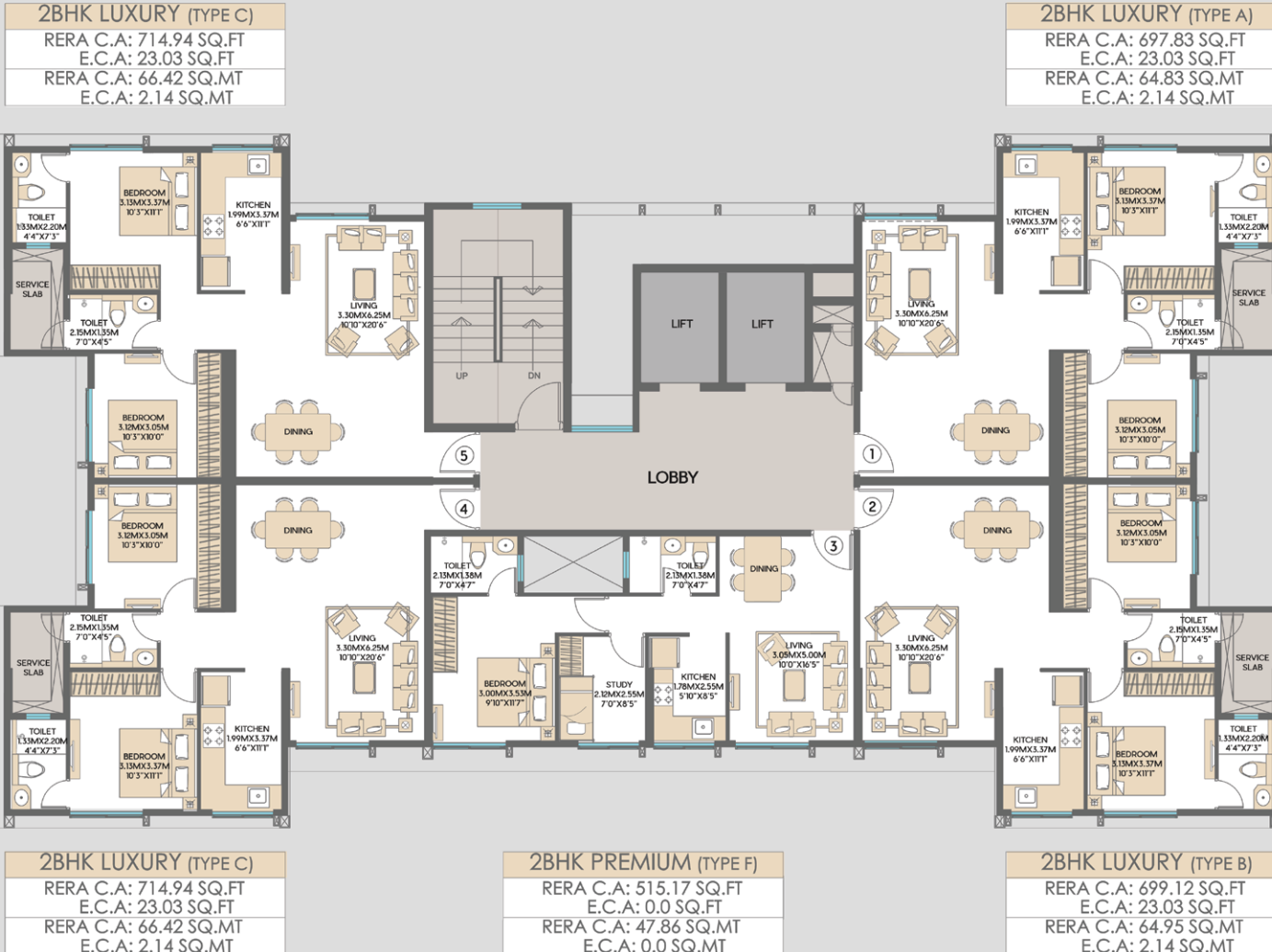
SIENNA - WING A&B TYPICAL FLOOR PLAN



“ This is a Typical Floor plan, subject to minor variations. The furniture, fixtures and fittings etc. are for representative purposes and does not constitute part of the final product or any part thereof. Internal furniture layout is indicative for understanding.Windows are shown indicative and will be provided as per final elevation drawing”



SIENNA - WING-C TYPICAL FLOOR PLAN



“ This is a Typical Floor plan, subject to minor variations. The furniture, fixtures and fittings etc. are for representative purposes and does not constitute part of the final product or any part there of. Internal furniture layout is indicative for understanding.Windows are shown indicative and will be provided as per final elevation drawing”

SIENNA - WING-D TYPICAL FLOOR PLAN



“ This is a Typical Floor plan, subject to minor variations. The furniture, fixtures and fittings etc. are for representative purposes and does not constitute part of the final product or any part there of. Internal furniture layout is indicative for understanding.Windows are shown indicative and will be provided as per final elevation drawing”

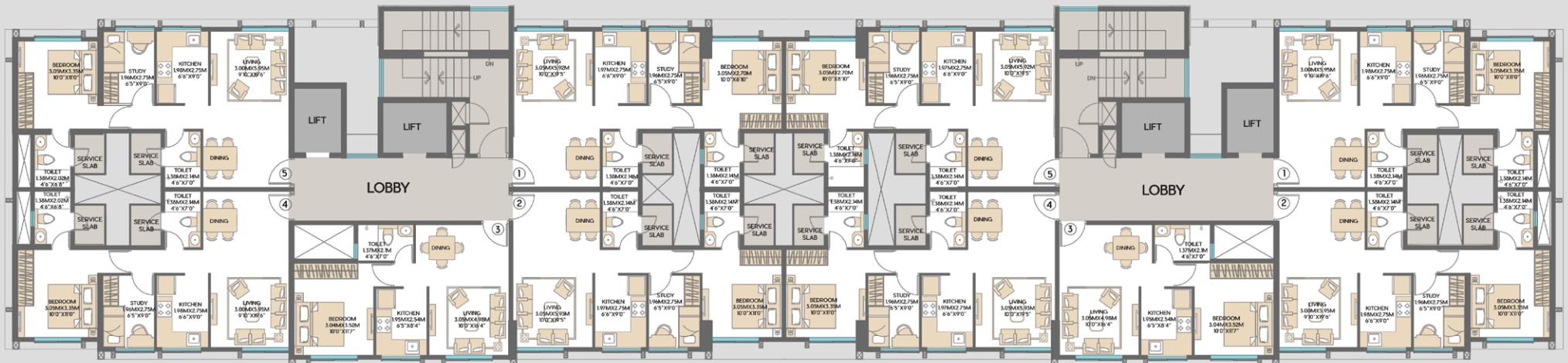
SIENNA - WING E&F TYPICAL FLOOR PLAN

2BHK PREMIUM (TYPE D)
RERA C.A: 560.82 SQ.FT
E.C.A: 40.42 SQ.FT
RERA C.A: 52.10 SQ.MT
E.C.A: 3.75 SQ.MT

2BHK PREMIUM (TYPE E)
RERA C.A: 555.27 SQ.FT
E.C.A: 41.08 SQ.FT
RERA C.A: 51.59 SQ.MT
E.C.A: 3.82 SQ.MT

2BHK PREMIUM (TYPE E)
RERA C.A: 555.27 SQ.FT
E.C.A: 41.08 SQ.FT
RERA C.A: 51.59 SQ.MT
E.C.A: 3.82 SQ.MT

2BHK PREMIUM (TYPE C)
RERA C.A: 561.45 SQ.FT
E.C.A: 39.72 SQ.FT
RERA C.A: 52.16 SQ.MT
E.C.A: 3.69 SQ.MT



2BHK PREMIUM (TYPE D)
RERA C.A: 560.82 SQ.FT
E.C.A: 40.42 SQ.FT
RERA C.A: 52.10 SQ.MT
E.C.A: 3.75 SQ.MT

1BHK (TYPE C)
RERA C.A: 402.68 SQ.FT
E.C.A: 0.0 SQ.FT
RERA C.A: 37.41 SQ.MT
E.C.A: 0.0 SQ.MT

2BHK PREMIUM (TYPE E)
RERA C.A: 555.78 SQ.FT
E.C.A: 41.08 SQ.FT
RERA C.A: 51.63 SQ.MT
E.C.A: 3.82 SQ.MT

2BHK PREMIUM (TYPE E)
RERA C.A: 555.78 SQ.FT
E.C.A: 41.08 SQ.FT
RERA C.A: 51.63 SQ.MT
E.C.A: 3.82 SQ.MT

1BHK (TYPE C)
RERA C.A: 402.68 SQ.FT
E.C.A: 0.0 SQ.FT
RERA C.A: 37.41 SQ.MT
E.C.A: 0.0 SQ.MT

2BHK PREMIUM (TYPE C)
RERA C.A: 561.45 SQ.FT
E.C.A: 39.72 SQ.FT
RERA C.A: 52.16 SQ.MT
E.C.A: 3.69 SQ.MT

WING F

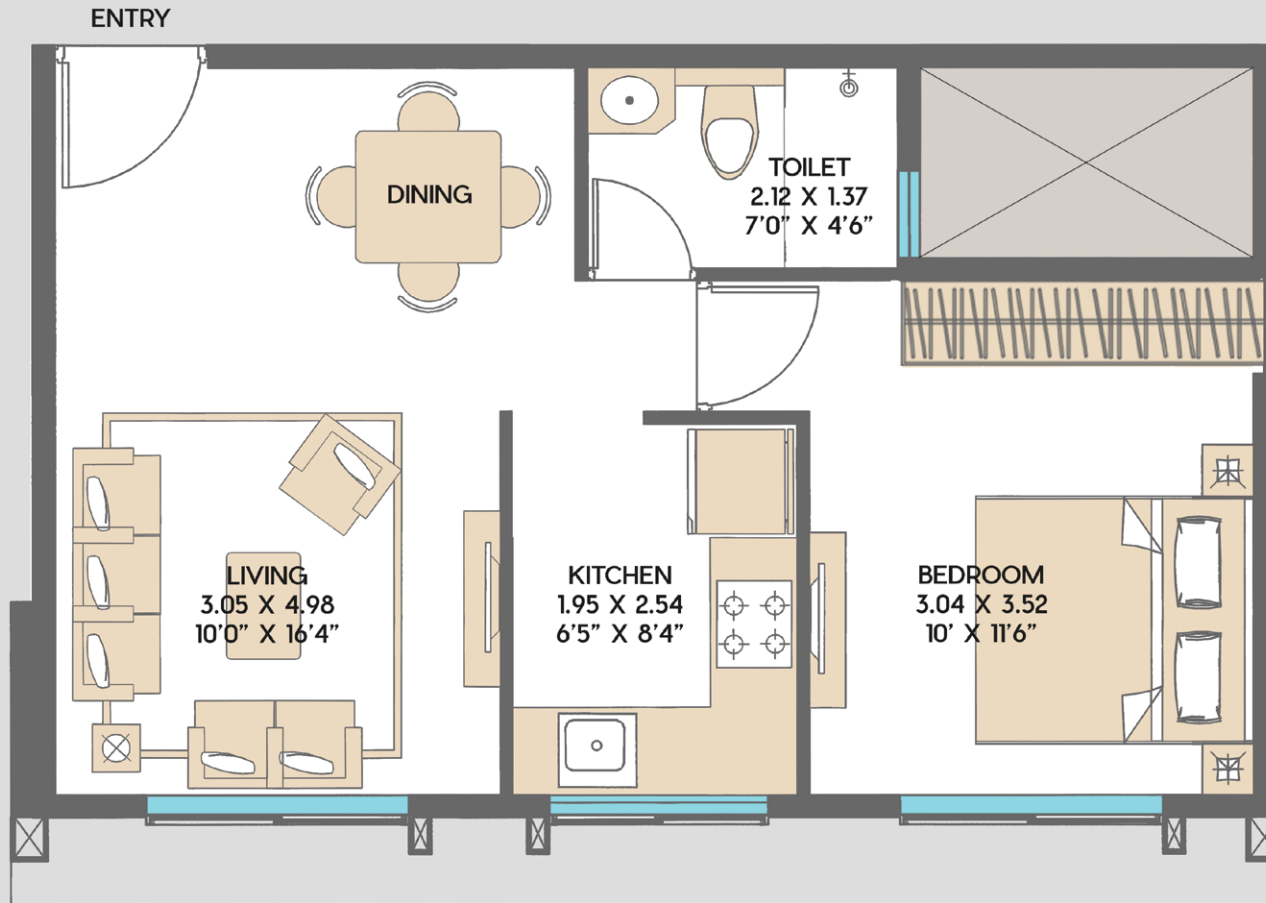
WING E



“ This is a Typical Floor plan, subject to minor variations. The furniture, fixtures and fittings etc. are for representative purposes and does not constitute part of the final product or any part there of. Internal furniture layout is indicative for understanding.Windows are shown indicative and will be provided as per final elevation drawing”

Unit Plans

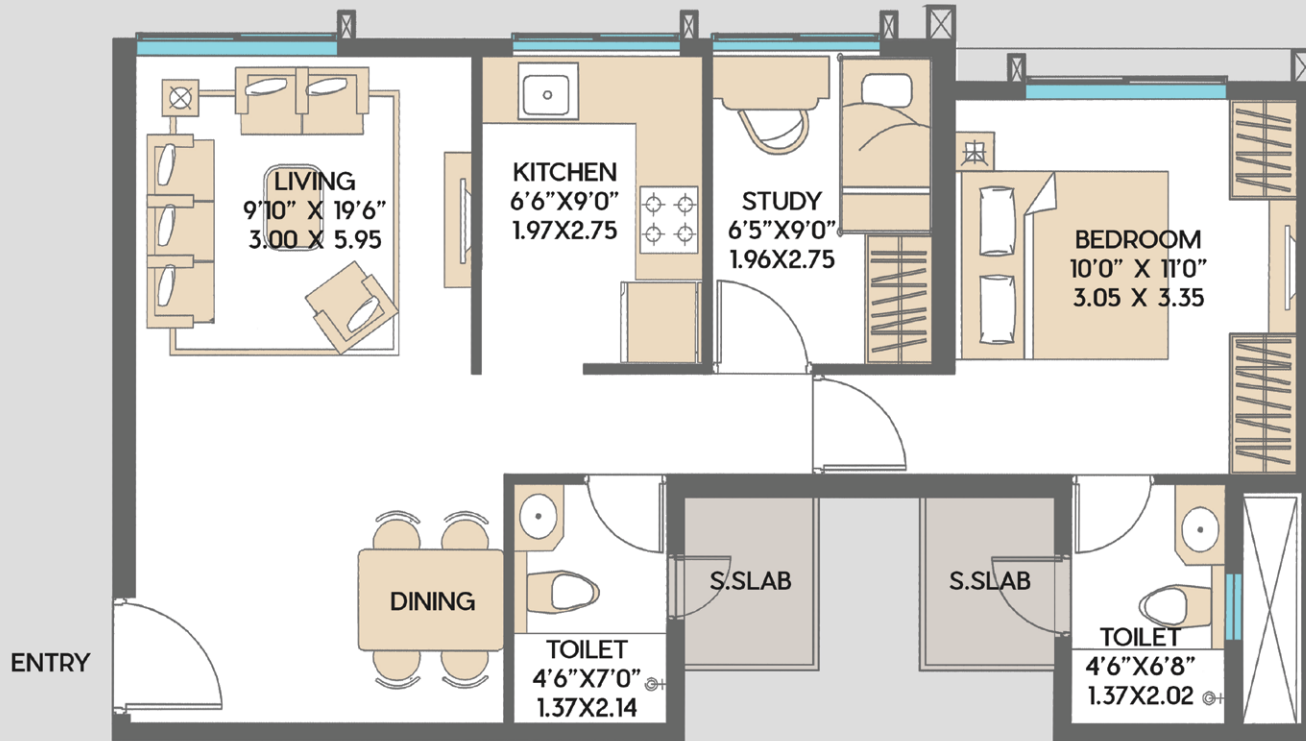
SIENNAA, 1 BHK, TYPE C



RERA CA (sq.mt.)
37.41 sq.mt.
RERA CA (sq.ft.)
402.68 sq.ft.

" This is a Typical Floor plan, subject to minor variations. The furniture, fixtures and fittings etc. are for representative purposes and does not constitute part of the final product or any part there of. Internal furniture layout is indicative for understanding.Windows are shown indicative and will be provided as per final elevation drawing"

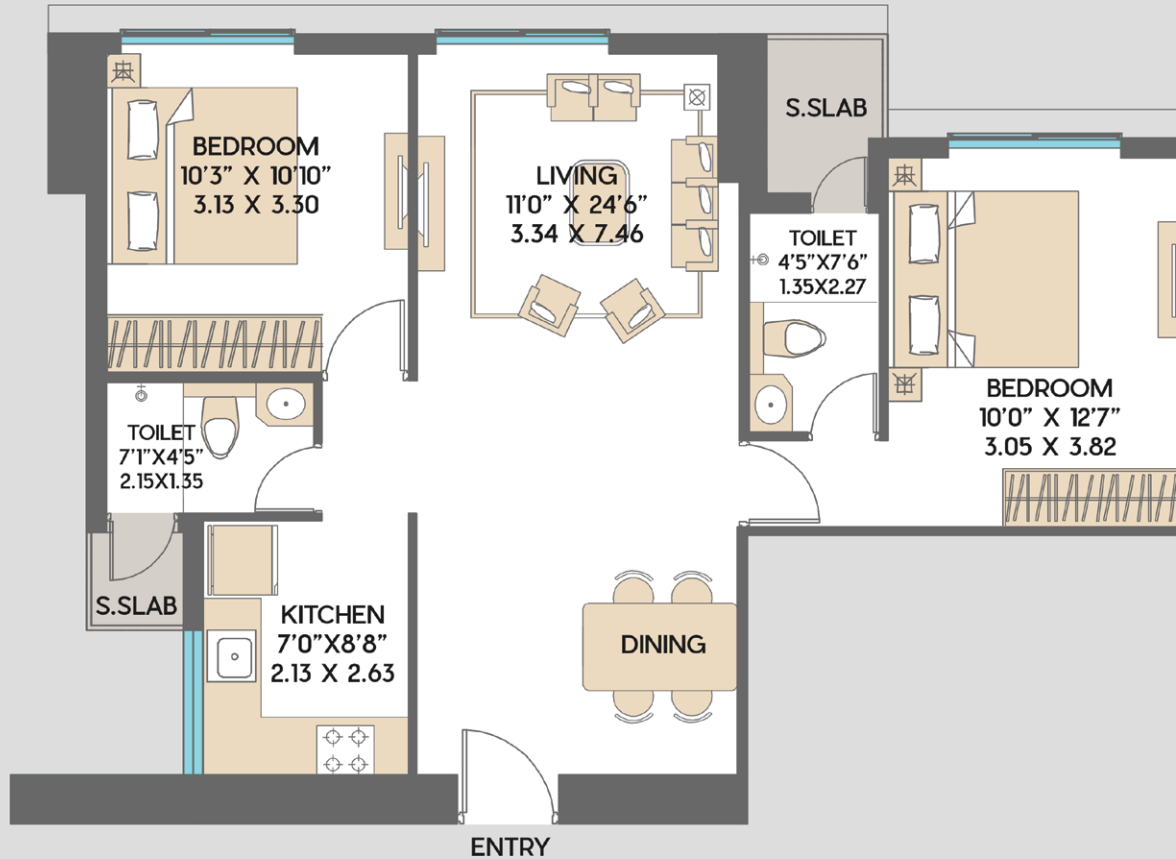
SIENNAA, 2 BHK PREMIUM, TYPE C



RERA CA (sq.mt.)	RERA ECA (sq.mt.)
52.10sq.mt.	3.69 sq.mt.
RERA CA (sq.ft.)	RERA ECA (sq.ft.)
560.80 sq.ft.	39.72 sq.ft.

“ This is a Typical Floor plan, subject to minor variations. The furniture, fixtures and fittings etc. are for representative purposes and does not constitute part of the final product or any part there of. Internal furniture layout is indicative for understanding.Windows are shown indicative and will be provided as per final elevation drawing”

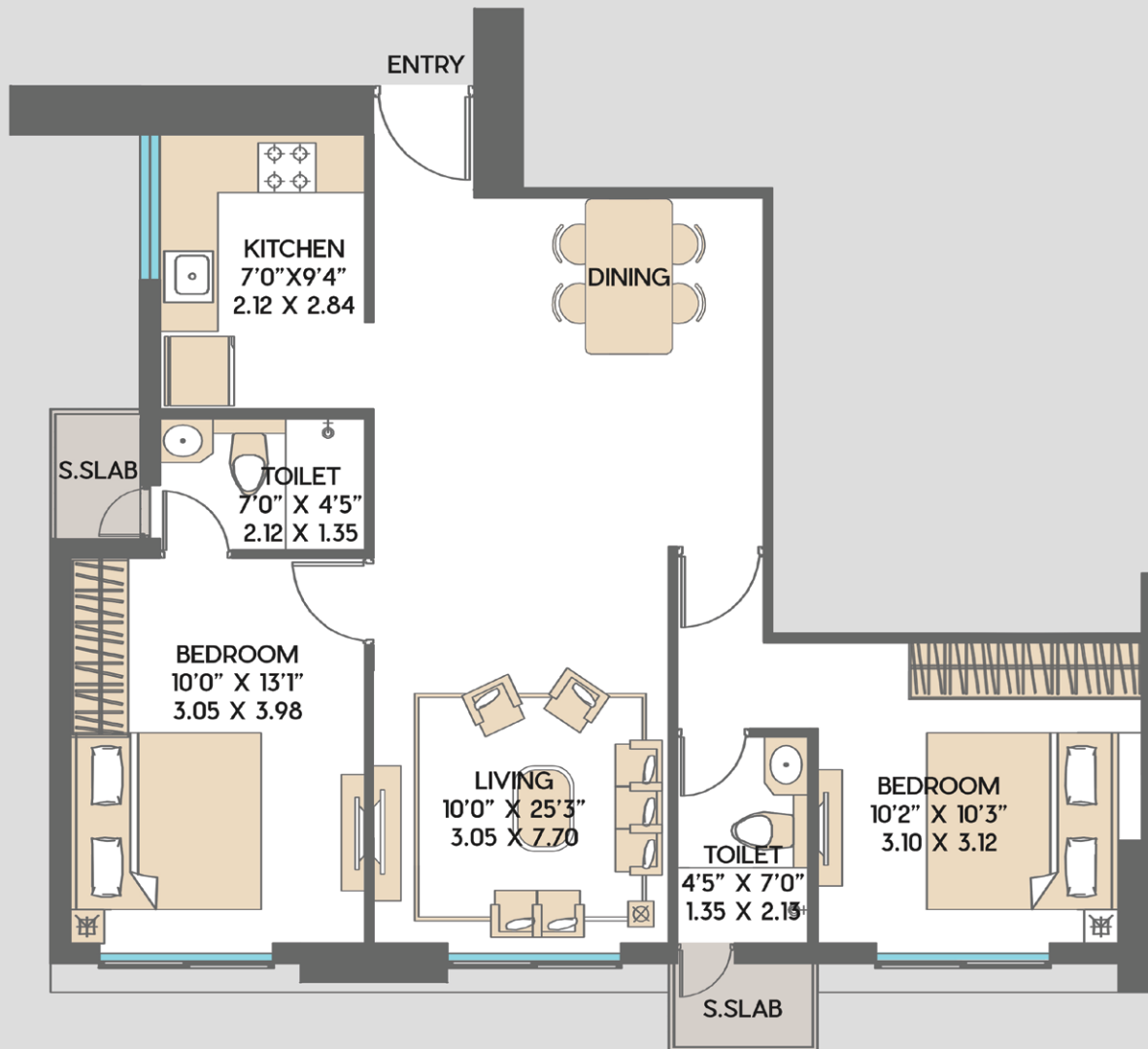
SIENNAA, 2 BHK LUXURY, TYPE E



RERA CA (sq.mt.)	RERA ECA (sq.mt.)
64.52 sq.mt.	2.37 sq.mt.
RERA CA (sq.ft.)	RERA ECA (sq.ft.)
694.49 sq.ft.	25.51 sq.ft.

“ This is a Typical Floor plan, subject to minor variations. The furniture, fixtures and fittings etc. are for representative purposes and does not constitute part of the final product or any part there of. Internal furniture layout is indicative for understanding.Windows are shown indicative and will be provided as per final elevation drawing”

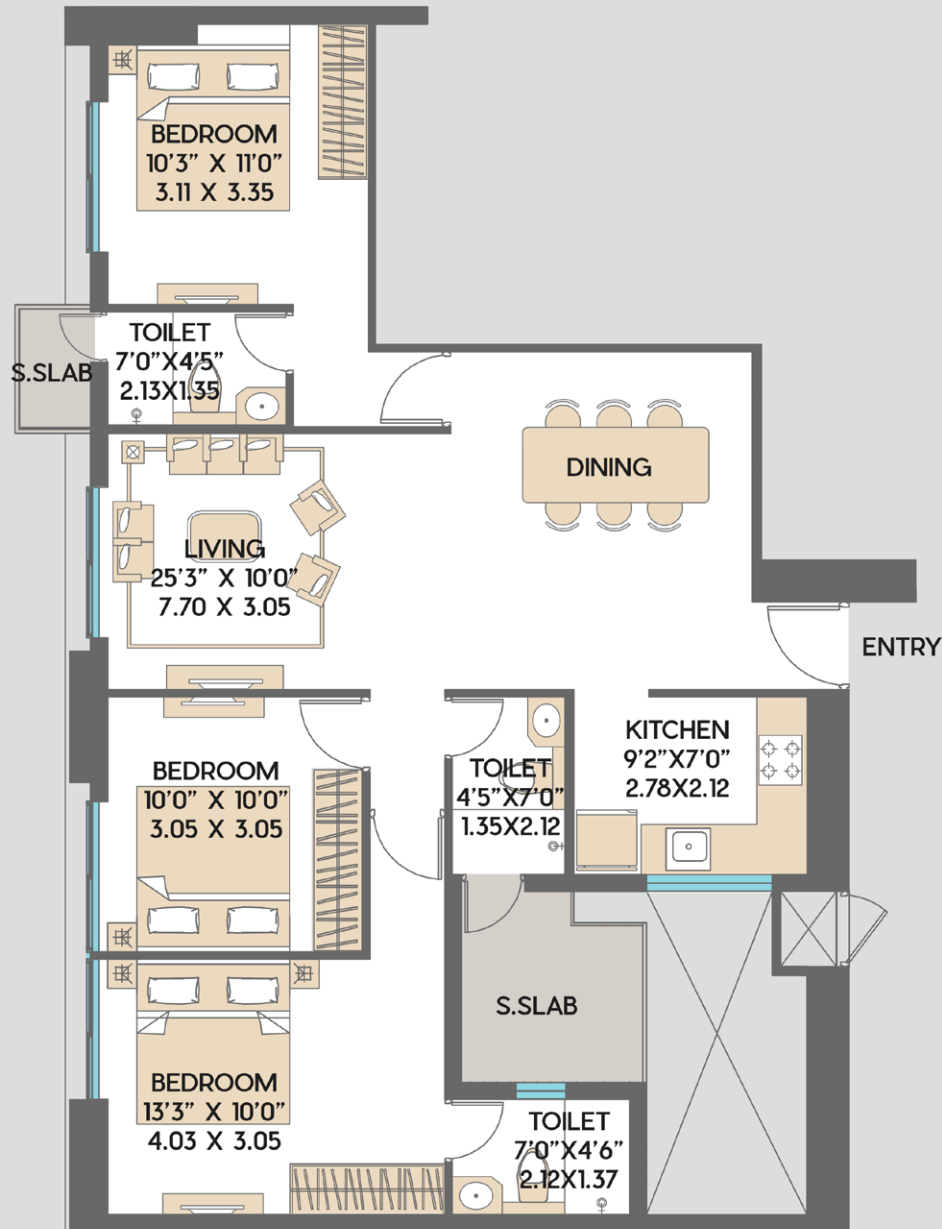
SIENNAA, 2 BHK LUXURY, TYPE F



RERA CA (sq.mt.)	RERA ECA (sq.mt.)
67.03 sq.mt.	2.12 sq.mt.
RERA CA (sq.ft.)	RERA ECA (sq.ft.)
721.47 sq.ft.	22.82 sq.ft.

“ This is a Typical Floor plan, subject to minor variations. The furniture, fixtures and fittings etc. are for representative purposes and does not constitute part of the final product or any part there of. Internal furniture layout is indicative for understanding.Windows are shown indicative and will be provided as per final elevation drawing”

SIENNAA, 3 BHK, TYPE A



RERA CA (sq.mt.)	RERA ECA (sq.mt.)
83.65 sq.mt.	5.65 sq.mt.
RERA CA (sq.ft.)	RERA ECA (sq.ft.)
900.41 sq.ft.	60.82 sq.ft.

“ This is a Typical Floor plan, subject to minor variations. The furniture, fixtures and fittings etc. are for representative purposes and does not constitute part of the final product or any part there of. Internal furniture layout is indicative for understanding.Windows are shown indicative and will be provided as per final elevation drawing”

A LEGACY STRUCTURED ON PRIDE

Discover the landmarks we have been
creating since 1865.



New India Assurance
Mumbai, 1937



Reserve Bank of India
Mumbai, 1939



HSBC Bank
Mumbai, 1950



Oberoi Hotel
Mumbai, 1973



Palace of Sultan
Oman, 1975



Citi Bank
Mumbai, 1998



I Flex
Bangalore, 2003



The Imperial
Mumbai, 2010



KANDIVALI (E)

🗨 Sarova at **56161** | 📞 **9513926420**

MahaRERA Registration No. **P51800019624, P51800019658, P51800019659, P51800019643, P51800019677**
available at website: <http://maharera.mahaonline.gov.in>

Site address: Sienna, Opposite Alpine, Sarova, Off Western Express Highway, Kandivali East, Mumbai - 400 101
Corporate address: SD Corporation Pvt. Ltd, SP Centre, 41/44, Minoo Desai Marg, Colaba, Mumbai - 400 005

The information and material contained herein are not intended to substitute the information available on the website of MahaRERA. Any person who is considering/evaluating any apartment in any of the registered real estate projects, are required to independently analyze, acquaint and familiarize themselves with the information and disclosures uploaded on the website of MahaRERA. In the event of any conflict (whether actual or perceived) between the information and material contained herein and the details available on the website of MahaRERA, the details as available on the website of MahaRERA shall prevail. Further, Sarova is a brand name for the larger project and the information given herein pertains to the larger project. We will be registering separate real estate projects, from time to time. PROJECT FUNDED BY HDFC LIMITED

+ The photographs, images, videos, plans, drawings, sketches, renderings, pictorial and graphical representations, specifications, illustrations, other information etc. contained herein are typical stock/standard photography used by The industry at large and/or pure imagination and are intended to indicate a conceptual and aspirational lifestyle. None of The aforementioned is indicative of how The larger or any part thereof looks at present and/or may eventually look in future and/or may be designed, constructed and/or completed.



Site address: Sienna, Opposite Alpine, Sarova, Off Western Express Highway, Kandivali East, Mumbai - 400 101

Corporate address: SD Corporation Pvt. Ltd, SP Centre, 41/44, Minoo Desai Marg, Colaba, Mumbai - 400 005

The information and material contained herein are not intended to substitute the information available on the website of MahaRERA. Any person who is considering/evaluating any apartment in any of the registered real estate projects, are required to independently analyze, acquaint and familiarize themselves with the information and disclosures uploaded on the website of MahaRERA. In the event of any conflict (whether actual or perceived) between the information and material contained herein and the details available on the website of MahaRERA, the details as available on the website of MahaRERA shall prevail. Further, Sarova is a brand name for the larger project and the information given herein pertains to the larger project. We will be registering separate real estate projects, from time to time. PROJECT FUNDED BY HDFC LIMITED