

# PRESENTING A CITY WHERE **FEELING IS BELIEVING**

A 55-ACRE INTEGRATED TOWNSHIP IN MUMBAI

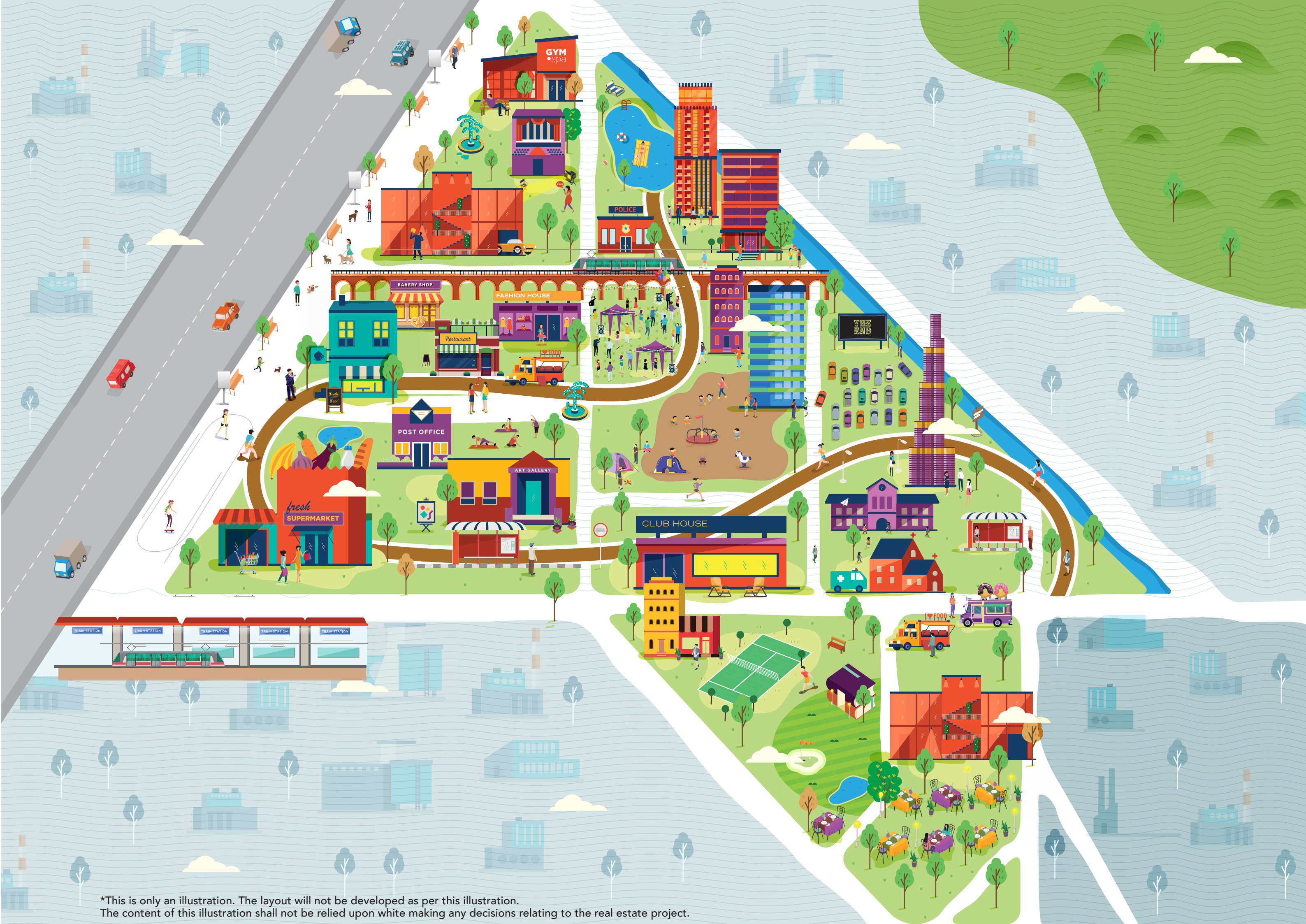


**SAROVA**  
The ExperienCity

**KANDIVALI (E)**







\*This is only an illustration. The layout will not be developed as per this illustration.  
The content of this illustration shall not be relied upon white making any decisions relating to the real estate project.



# SITE LAYOUT

## OUTDOOR AMENITIES

- 1 Meditation Pavilion
- 2 Herb Garden
- 3 Amphitheatre
- 4 Viewing Deck with Barbeque Area
- 5 Sky Jogging Loop
- 6 Practice Cricket Pitch
- 7 Multi-purpose Court
- 8 Leisure Pavilion
- 9 Swimming Pool with Kids Pool
- 10 Kid's Play Area
- 11 Club House
- 12 Senior Citizen Garden
- 13 Toddler Play Area
- 14 Skating Pit

## TYOLOGY

### Auburn at Sarova

- 1 BHK (Type C)
- 1.5 BHK (Type A)
- 1.5 BHK (Type B)
- 3 BHK (TYpe B)
- 3 BHK (Type C)

## INDOOR AMENITIES :

- Gym
- Table Tennis
- Lounge
- Business Center
- Pool table

## TYOLOGY

### Siennaa at Sarova

- 1 BHK
- 2 BHK
- 2 BHK Luxury
- 3 BHK



The Master Plan of the Project and the other plans and the provision for and the area of the amenities mentioned therein are proposed at this stage and the Promoter/Owner shall be entitled and reserves its right to make such variations, alterations, amendments or deletions thereto as the Promoter/Owner may consider necessary in the interest of the development and as per the provisions of law or as may be required and approved by the concerned local/statutory authorities from time to time without obtaining consent of any / all flat purchasers. The Promoter/Owner expressly clarifies and makes it abundantly clear that the finalised details, specifications, and particulars with respect to any facet or component of the project (including as depicted or stated herein) shall be as indicated in the registered agreement for sale that may be executed and as disclosed on the website of MahaRera, and not otherwise





# SIENNAA

*at Sarova*

---

## FLOOR PLANS



SIENNAA - WING A & B TYPICAL FLOOR PLAN



"This is a Typical Floor plan, subject to minor variations. The furniture, fixtures and fittings etc. are for representative purposes and does not constitute part of the final product or any part thereof. Internal furniture layout is indicative for understanding. Windows are shown indicative and will be provided as per final elevation drawing"

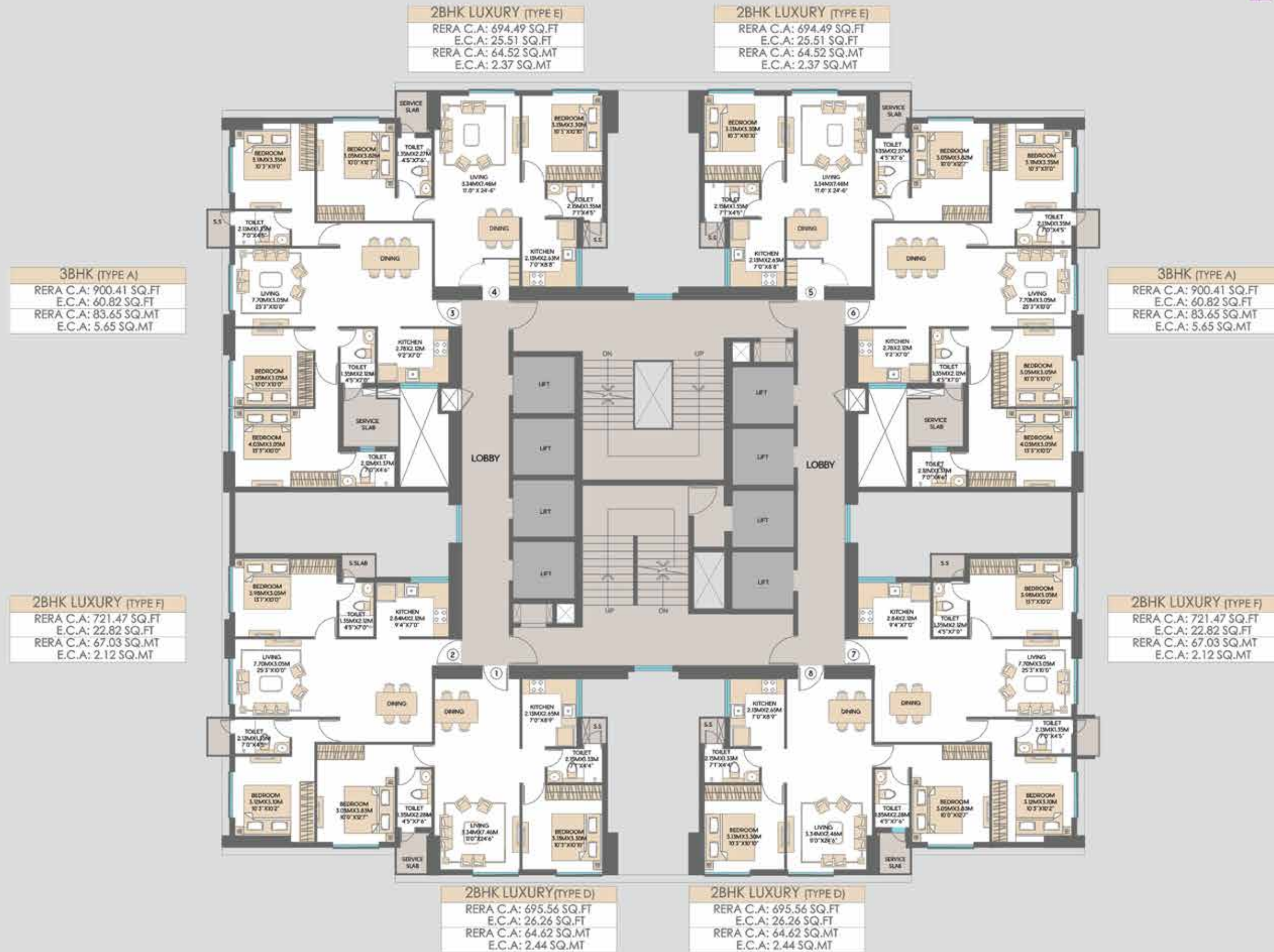




"This is a Typical Floor plan, subject to minor variations. The furniture, fixtures and fittings etc. are for representative purposes and does not constitute part of the final product or any part thereof. Internal furniture layout is indicative for understanding. Windows are shown indicative and will be provided as per final elevation drawing"



# SIENNAA - WING-D TYPICAL FLOOR PLAN



"This is a Typical Floor plan, subject to minor variations. The furniture, fixtures and fittings etc. are for representative purposes and does not constitute part of the final product or any part thereof. Internal furniture layout is indicative for understanding. Windows are shown indicative and will be provided as per final elevation drawing. The information contained in this plan is indicative and artistic conception of the proposed development. The plan, drawings, amenities, facilities are subject to the approval of the concerned authorities and the developer reserves the right to amend the same any time without notice. The plan is for marketing purpose and to be used for reference."



# SIENNAA - WING E & F TYPICAL FLOOR PLAN



"This is a Typical Floor plan, subject to minor variations. The furniture, fixtures and fittings etc. are for representative purposes and does not constitute part of the final product or any part thereof. Internal furniture layout is indicative for understanding. Windows are shown indicative and will be provided as per final elevation drawing"



# AUBURN

*at Sarova*

---

## FLOOR PLANS



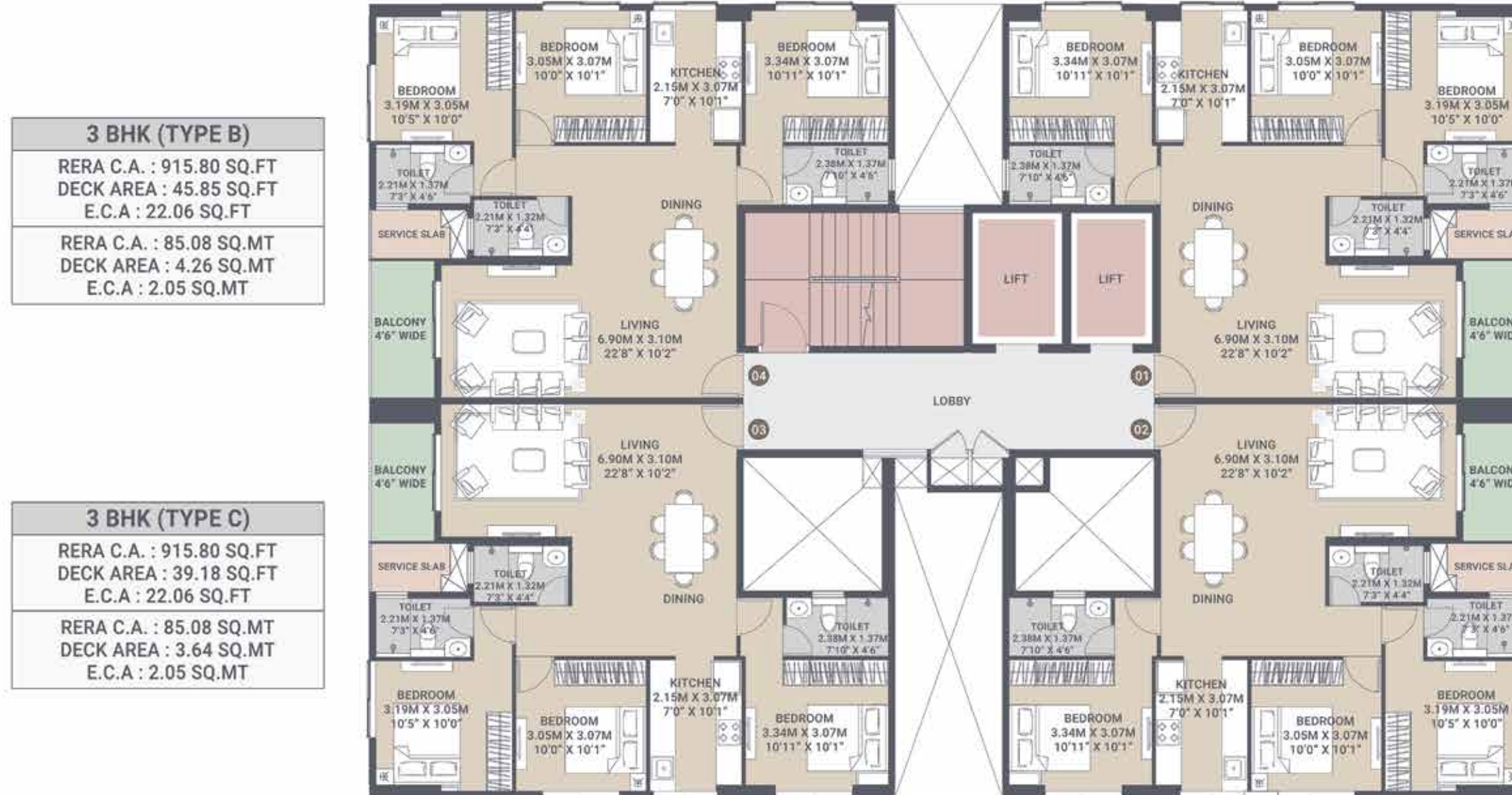
SAROVA  
The ExperienCity

KANDIVALI (E)



# TYPICAL FLOOR PLAN - WING A

2<sup>ND</sup> FLOOR, 4<sup>TH</sup> TO 9<sup>TH</sup> FLOOR, 11<sup>TH</sup> TO 17<sup>TH</sup> FLOOR



**AUBBURN**  
at Sarova

"Internal furniture layout is indicative for understanding. 1 meter = 3 feet 3.37 inches. Windows shown are indicative and will be provided as per final elevation drawing. This is a Typical floor plan, subject to minor variations. The furniture, fixtures and fittings etc. are for representative purposes and does not constitute part of the final product or any part thereof."





# TYPICAL FLOOR PLAN - WING B

1<sup>ST</sup> FLOOR (E DECK), 2<sup>ND</sup> FLOOR, 4<sup>TH</sup> TO 9<sup>TH</sup> FLOOR, 11<sup>TH</sup> TO 17<sup>TH</sup> FLOOR



**AUBBURN**  
 at Sarova

"Internal furniture layout is indicative for understanding. 1 meter = 3 feet 3.37 inches. Windows shown are indicative and will be provided as per final elevation drawing. This is a Typical floor plan, subject to minor variations. The furniture, fixtures and fittings etc. are for representative purposes and does not constitute part of the final product or any part thereof."



# TYPICAL FLOOR PLAN - WING C

1<sup>ST</sup> FLOOR (E-DECK), 2<sup>ND</sup> FLOOR, 4<sup>TH</sup> TO 9<sup>TH</sup> FLOOR, 11<sup>TH</sup> TO 17<sup>TH</sup> FLOOR



**AUBURN**  
 at Sarova

"Internal furniture layout is indicative for understanding. 1 meter = 3 feet 3.37 inches. Windows shown are indicative and will be provided as per final elevation drawing. This is a Typical floor plan, subject to minor variations. The furniture, fixtures and fittings etc. are for representative purposes and does not constitute part of the final product or any part thereof."





Siennaa at Sarova - MahaRERA Registration No. P51800019624, P51800019658, P51800019659, P51800019643, P51800019677, P51800019693 available at website:<http://maharera.mahaonline.gov.in>  
Auburn at Sarova - MahaRERA Registration No. P51800025641, P51800025637, P51800026064 available at website:<http://maharera.mahaonline.gov.in>

**Site address:** Sarova Experience Lounge, Off Western Express Highway, Kandivali (E) - 400 101

Disclaimer: The information and material contained herein are not intended to substitute the information available on the website of MahaRERA. Any person who is considering/evaluating any apartment in any of the registered real estate projects, are required to independently analyze, acquaint and familiarize themselves with the information and disclosures uploaded on the website of MahaRERA. In the event of any conflict (whether actual or perceived) between the information and material contained herein and the details available on the website of MahaRERA, the details as available on the website of MahaRERA shall prevail. Further, Sarova is a brand name for the larger project and the information given herein pertains to the larger project. We will be registering separate real estate projects, from time to time. Siennaa is mortgaged with ICICI Bank and NOC from mortgagee bank will be provided for sale of unit, if required. Alpine, Epsilon & Astron is funded by HDFC Limited. \*T&C Apply.