



# 24

EAST AVENUE

.....

Where Luxury Meets Serenity

24







24 CLUB

Artist's Impression

Club House



Swimming Pool | Artist's Impression



21 EAST AVENUE













# AMENITIES

INDULGE IN EXCLUSIVE AMENITIES DESIGNED FOR THE ELITE



## Multi-purpose court

Whether you want to play a friendly badminton match or improve your tennis swings, our multi-purpose court will feed all your athletic requirements.



## Jogging Track

The jogging track is stretched around the whole property. Enjoy the scenic views of nature while getting your daily dose of hikes and jogs.



## Children's Play Area

Now you don't have to worry about finding a new park for your kids to play in. Our children's play area promises to be every child's dreamland.



## Open Amphitheater

Enjoy festivals and various other community events at our open amphitheater. It has been designed to provide the best audio-visual experiences.



# AMENITIES

ELEVATE YOUR LIFESTYLE WITH OUR EXCEPTIONAL AMENITIES



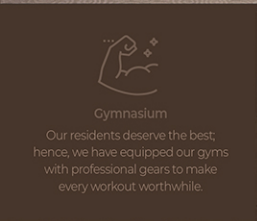
Party Hall

All your celebrations and special days deserve a special venue. Our party hall serves the purpose of any event you want to host just outside your home.



Indoor Gaming Room

People of all ages enjoy games. The indoor gaming room has every game that you can enjoy with your family and friends while making meaningful memories.



Gymnasium

Our residents deserve the best; hence, we have equipped our gyms with professional gears to make every workout worthwhile.



Water Body

To add to the beauty and promote the beautiful





Artist's Impression Coffee Garden



NOT TO SCALE

### LEGEND

- 1kh
- 1.5kh
- 1.6kh
- 2kh type 1
- 2kh type 2
- 2.5kh
- 3kh type 1
- 3kh type 2
- 4kh
- 6kh



## VILLA SPECIFICATIONS



1. All P.C.C. (1:3:6).
2. All R.C.C. M-20 (1:1.5:3).
3. All External Wall: 200 mm (AAC Block) / 200 mm with 1st class Brick
4. All Internal Partition Wall: 100 mm (AAC Block) / 125 mm with 1st class Brick
5. Parapet Wall: 100 mm (AAC Block) / 125 mm with 1st class Brick

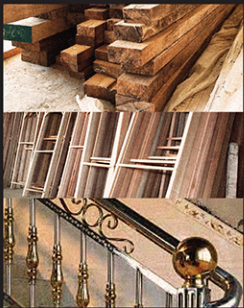


6. TMT Bars: Shyam steel or equal Fe:500 Grade Tor Steel (ISI Standard)
7. Cement: Ambuja or equal PSC (ISI Standard)
8. Stone Chips: ¾" & ½"
9. Sand: Coarse / Medium Coarse



10. Ceiling Plaster: 10 mm (1:6)
11. Internal Wall Plaster: 15 mm (1:6)
12. Outside Plaster: 20 mm (1:6)
13. Flooring: Glazed Vitrified Tiles (600 x 600)
14. Toilet / Kitchen floor: Anti-skid Tiles
15. Toilet / Kitchen Dado: Glazed Tiles
16. Stair: Marble





16. Door Frame: Local Sal wood (ID – 7ft., MD – 8ft)
17. Door Shutter: Standard wooden Door
18. Window: UPVC Sliding & Grill Square Bar
19. Stair & Balcony Railing: GLASS / S.S. Railing with standard grade



20. Inside Paint: 1 Coat Primer Over 2 Coats Putty
21. Outside Paint: Weather coat over 1 coat primer
22. Sanitary Ware: Cera / Jaquar or equal Chromium plated fittings with high quality porcelain fixtures
23. Door Paint: (1 Coat Primer)

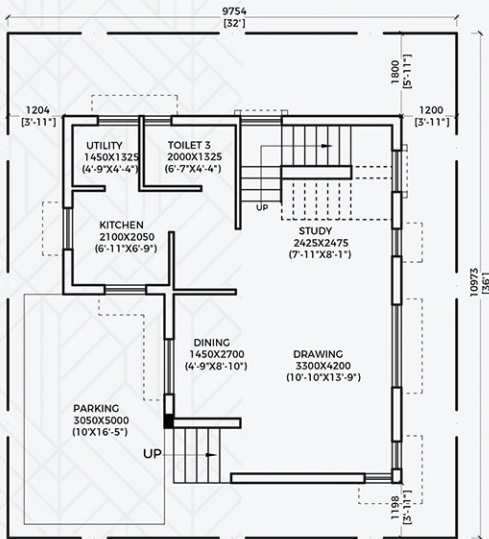


24. Modular Switch: Havells, Crabtree or equal ISI Standard
25. Electric Wire: Havells, Finolex or equal ISI Standard
26. Kitchen Slab: Black Stone/ Green Marble.
27. Light / Fan Point as Per Standard Practise (ISI).
28. TV Point: In All Rooms
29. Ac Point: All bed room
30. Electric supply: 3KVA
31. 24 hours Power Backup



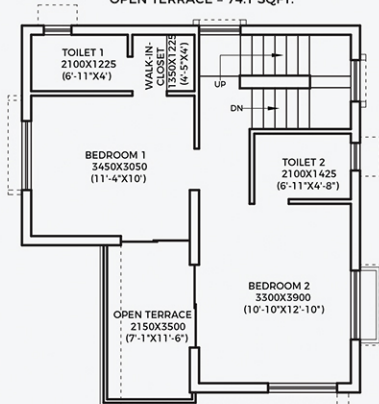
Villa Serenity

Artist's Impression



**GROUND FLOOR PLAN**

**AREA STATEMENT**  
**LAND AREA = 32'X36'**  
**GROUND FLOOR COVERED AREA = 515.12 SQFT.**  
**FIRST FLOOR COVERED AREA = 505.2 SQFT.**  
**PARKING = 163.92 SQFT.**  
**OPEN TERRACE = 74.1 SQFT.**



**FIRST FLOOR PLAN**

## 2.5 BHK VILLA

Plot Size	:	1.6 Kattha
Built Up Area (Sqft)	:	1109
Parking Area (Sqft)	:	142
Balcony Area (Sqft)	:	44
Configuration	:	2.5 BHK

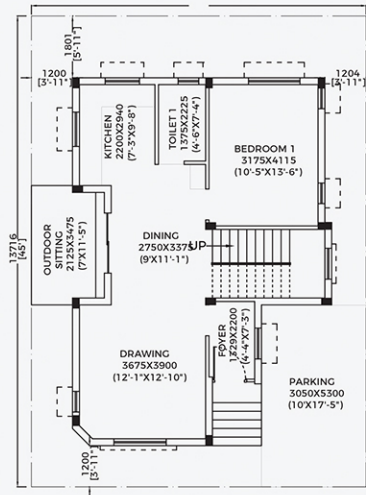
### USPs

- 1.6 KH Villa
- SUV Parking
- Study Room
- Walk in Closet
- Utility Area
- Open Deck Area

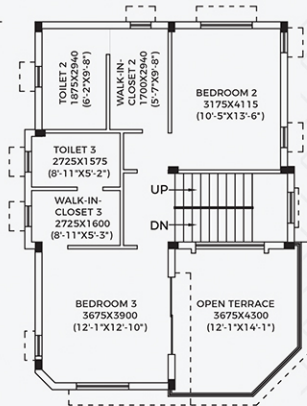


Artist's Impression

Villa Oasis



**AREA STATEMENT**  
 LAND AREA = 32'X45'  
 GROUND FLOOR COVERED AREA = 711.78 SQFT.  
 FIRST FLOOR COVERED AREA = 718.24 SQFT.  
 PARKING = 174 SQFT.  
 OPEN TERRACE = 160.4 SQFT.



**FIRST FLOOR PLAN**

## 3 BHK VILLA

Plot Size	:	2 Kattha
Built Up Area (Sqft)	:	1404
Parking Area (Sqft)	:	174
Balcony Area (Sqft)	:	157
Configuration	:	3 BHK

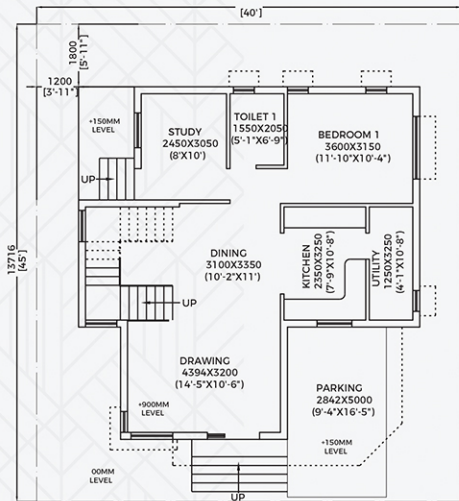
### USPs

- SUV Parking
- Outdoor Seating
- Walk in Closet
- Open Deck Area

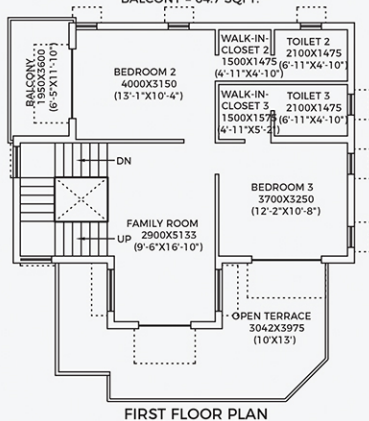


Villa Haven

Artist's Impression



**AREA STATEMENT**  
 LAND AREA = 40'X45'  
 GROUND FLOOR COVERED AREA = 838.3 SQFT.  
 FIRST FLOOR COVERED AREA = 738.78 SQFT.  
 PARKING = 149.4 SQFT.  
 OPEN TERRACE = 248.5 SQFT.  
 BALCONY = 64.7 SQFT.



### ..... 3.5 BHK VILLA .....

Plot Size	:	25 Kattha
Built Up Area (Sqft)	:	1577
Parking Area (Sqft)	:	1541
Balcony Area (Sqft)	:	313
Configuration	:	3.5 BHK

#### USPs

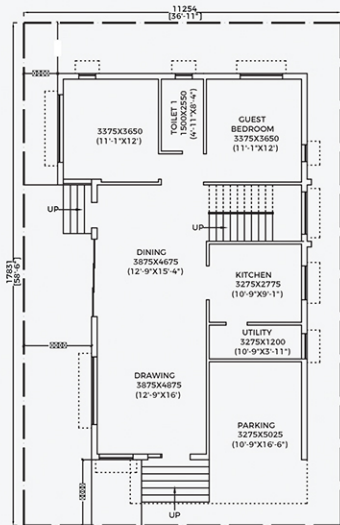
- SUV Parking • Outdoor Seating
- Walk-in Closet • Open Deck Area



Artists Impression

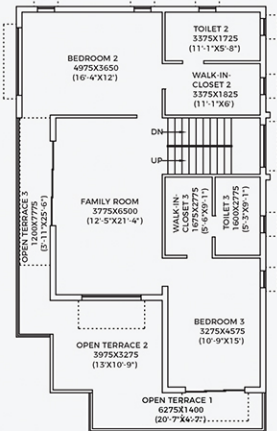
Villa Sanctuary





**GROUND FLOOR PLAN**

**AREA STATEMENT**  
 LAND AREA = 36'-11"X58'-6"  
 GROUND FLOOR COVERED AREA = 1049.15 SQFT.  
 FIRST FLOOR COVERED AREA = 1039 SQFT.  
 PARKING = 187.96 SQFT.  
 OPEN TERRACE = 335 SQFT.



**FIRST FLOOR PLAN**

## 4 BHK VILLA

Plot Size	:	3 Kattha
Built Up Area (Sqft)	:	1997
Parking Area (Sqft)	:	185
Balcony Area (Sqft)	:	385
Configuration	:	4 BHK

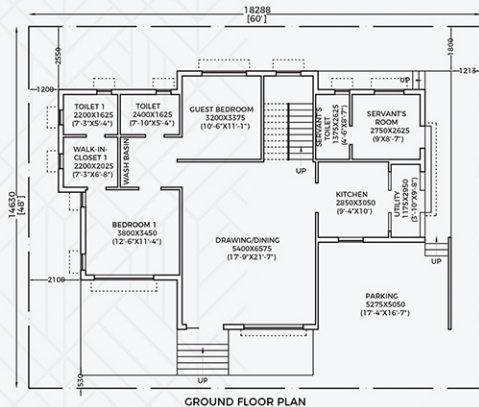
### USPs

- SUV Parking
- Huge Garden Area
- Utility Area
- 180 degree Open Deck Area
- Walk in Closets
- Additional Family Room

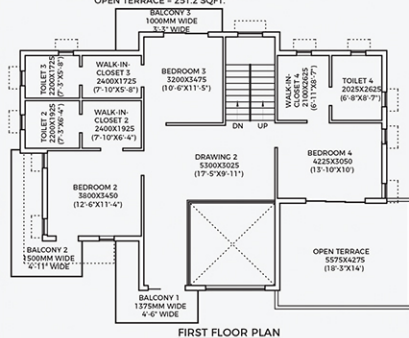


Villa Paradise

Artist's Impression



**AREA STATEMENT**  
 LAND AREA = 60'X48'  
 GROUND FLOOR COVERED AREA = 1292.05 SQFT.  
 FIRST FLOOR COVERED AREA = 1154.55 SQFT.  
 PARKING = 248.94 SQFT.  
 BALCONY = 55.8+99.82+72.59 = 228.21 SQFT.  
 OPEN TERRACE = 251.2 SQFT.



## 5 BHK VILLA

Plot Size	:	4 Kattha
Built Up Area (Sqft)	:	2447
Parking Area (Sqft)	:	204
Balcony Area (Sqft)	:	480
Configuration	:	5 BHK + Servent

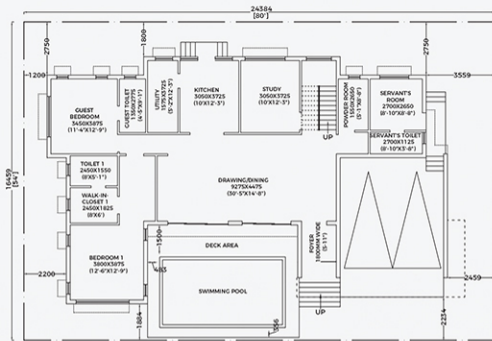
### USPs

- Huge Garden Area
- SUV Parking - 02
- Servant Quarter
- Walk in Closets
- Utility Area
- 360 degree Open Deck Area
- Additional Family Room



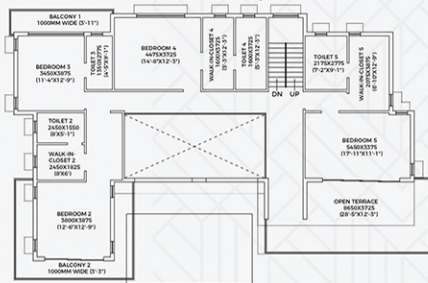
Artist's Impression

Villa Retreat



**GROUND FLOOR PLAN**

**AREA STATEMENT**  
 LAND AREA = 80'X54'  
 GROUND FLOOR COVERED AREA = 1786.1 SQFT.  
 FIRST FLOOR COVERED AREA = 1705.94 SQFT.  
 PARKING = 357.04 SQFT.  
 BALCONY = 68.9+159.35 = 228.25 SQFT.  
 OPEN TERRACE = 303.66 SQFT.



**FIRST FLOOR PLAN**

## ..... 7 BHK VILLA .....

Plot Size	:	6 Kattha
Built Up Area (Sqft)	:	3753
Parking Area (Sqft)	:	370
Balcony Area (Sqft)	:	489
Configuration	:	7 BHK + Servent

### USPs

- Double Ceiling Height of Drawing & Dining
- Swimming Pool/Lawn • Servant Quarter
- Walk in Closet • SUV Parking - 02 • 360 degree Open Deck Area • Open Deck Area



..... LOCATION MAP .....

# CONNECTIVITY



## ABOUT THE DEVELOPER .....

WH Landholdings is a well-respected and experienced real estate company with a proven track record of delivering high-quality residential developments. With a strong commitment to building sustainable and livable communities, the company has a reputation for working closely with local authorities and incorporating the latest in design and construction technologies. The company's team of professionals brings a wealth of expertise in areas such as urban planning, architecture, engineering, and project management, ensuring that the project is completed to the highest standards. With a focus on customer satisfaction and providing residents with a comfortable and luxurious lifestyle, the developer is dedicated to creating a vibrant and thriving community in this Villa township project.

.....









CORPORATE OFFICE

📍 24 East Avenue Marketing Office, Hatisala, West Bengal – 700135

☎ +91 91473 09382 ✉ [contact@24eastavenue.com](mailto:contact@24eastavenue.com)