

AAYUSHH
बeyond बricks
BEYOND BRICKS...



Dollygunj, Port Blair
(Andman and Nicobar Islands)

Internal Specifications

Structure

RCC with Bricks

Doors

Good quality teak wood

Flooring

Entire Flat: Vitrified Tiles

Kitchen & Toilet: Anti skid tiles

Granite in staircase

Walls

Interior: POP finish on walls and ceilings with paint

Exterior: Decorated finish with weathercoat paint

Windows

UPVC sliding window of good quality with MS Grill

Kitchen

Counter: Granite top with stainless steel water sink

Wall: 2 feet high ceramic tiles above counter

Cabinet under and over the cooking platform

Water Purifier and exhaust fan

Toilet

Quality C.P. Bath fittings and fixtures

Sanitary wares of reputed brand

Ceramic tiles upto 7 feet

Geyser in each toilet

Wall hung toilet seat with concealed cistern

Electrical

Concealed wiring of Havells / Finolex / equivalent

Modular switches

Adequate power points with provisions for

AC and Geyser

Water

Sufficient water supply from captive

Power Backup

Provision for power backup

Parking

Adequate car parking

Rooms

One wardrobe in each room

Drawing and Dining Area

Finished with false ceiling

Special Features

Well ventilated three side open flats

Vaastu approved

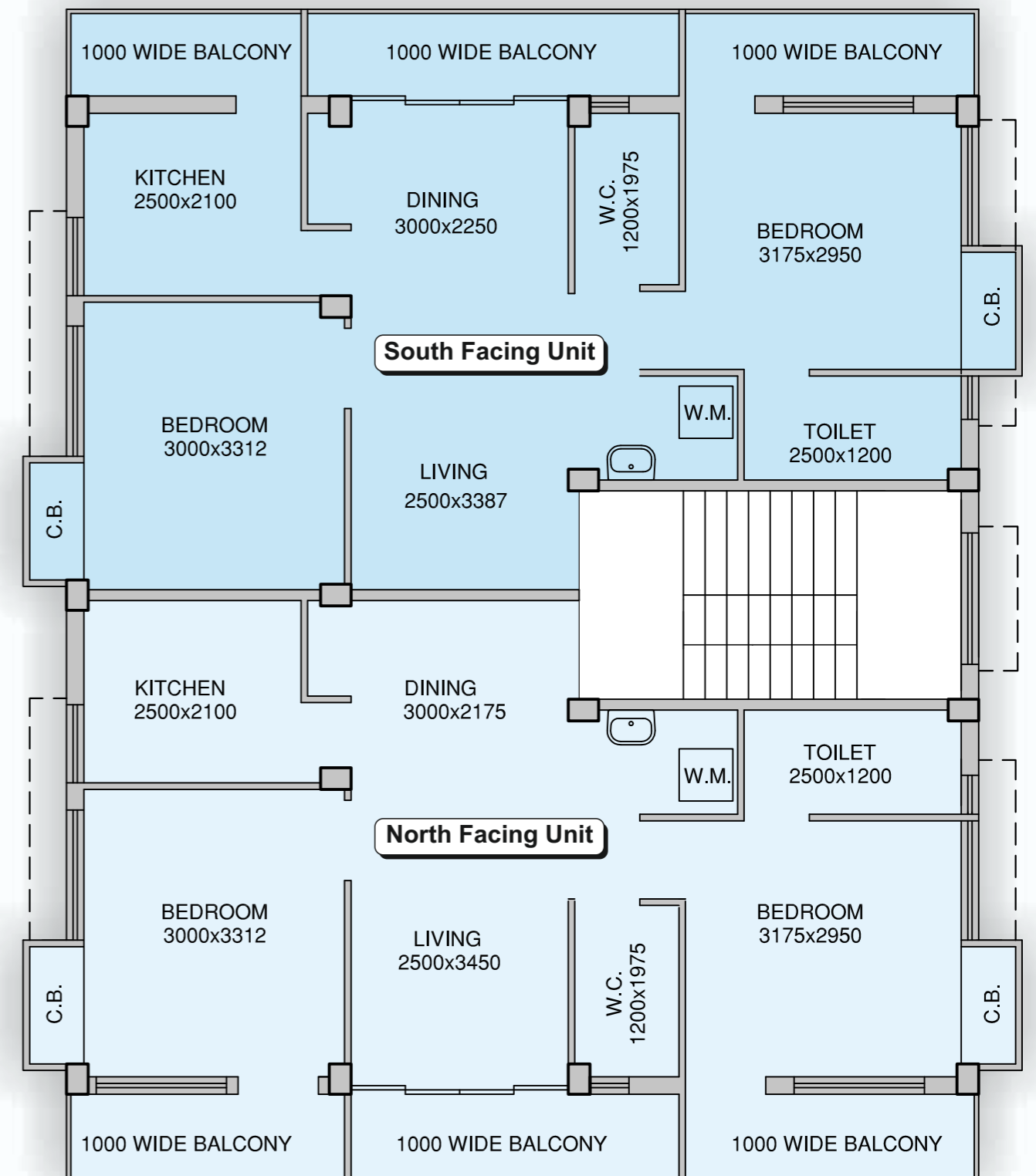
Water and Heat resistance roof treatment

24x7 water supply



Typical Floor Plan

(1st - 3rd Floor)



AREA STATEMENT

Flat Position	BHK+TOI	Area (Sq. Ft)
South Facing Unit	2+2	720
North Facing Unit	2+2	720

O C E A N



Location Map

Landmark	Distance
Port Blair Airport	10 Minutes
Dollygunj Junction	05 Minutes
Anand Multiplex	07 Minutes

Architect

TRIDIBESH MUKHERJEE
29, Michael Madhusudan Sarani
Kolkata - 700 023

Building Elevation
PEARL ORIGIN CO.
Kolkata

Developed by



E-mail : acc18912@gmail.com

CALL

94330 65733
98300 67037
96547 24365